

Explore objects of interest with a simple swipe of your finger

ZEISS SmartSEM Touch

SmartSEM Touch, an add-on to the established operation system, is a simplified user-interface for multi-user environments. Select an area of interest with a simple swipe of your finger and the SEM will automatically collect your data, running unattended whilst you perform other tasks. ZEISS SmartSEM Touch enables you a comfortable workflow through its contemporary touch interface and a variety of automated tools. Supporting multiple languages, this upgrade simplifies routine repetitive imaging tasks and frees up time for post-acquisition analysis. If desired, SmartSEM Touch can instantly switch back to SmartSEM for more complex imaging and analysis tasks. With this advanced software upgrade, experience user-friendly sample navigation using the optical camera, 3D rendered view or even import your micrographs to facilitate excellent image generation.



Highlights

Ease of use

Relieve your workflow through simplified manual controls, automated tools, image stitching, image navigation and the 'back to location' feature

Detector overlays

Receive easy to understand topographical and compositional information by overlaying images from different detectors taken at the same position, or even view them simultaneously

Annotate & measure

Save enormous time by measuring and annotating your sample in clearly represented steps and improve your productivity

Sample type select

Set automatically the initial imaging parameters for your specimen by simply choosing the used sample type

Upgrade your ZEISS microscope

Upgrade your ZEISS microscope with SmartSEM Touch and benefit from an easy to use touch interface and improved tools.

As technical requirements may apply on some systems, please contact us to learn more about SmartSEM Touch upgrades and how your processes will benefit from an upgrade:

microscopy@zeiss.com



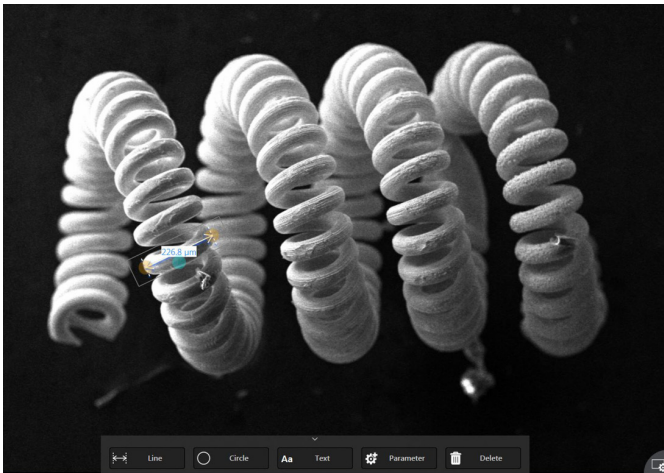
Seeing beyond

ZEISS SmartSEM Touch

Explore objects of interest with a simple swipe of your finger

Image stitching

The image stitching module allows you the stitching of multiple images into one large image for quick image review. This feature automatically stitches the images and blends them to give a clear unified solution. Simply view your stitched sample image collection with the Browse section.



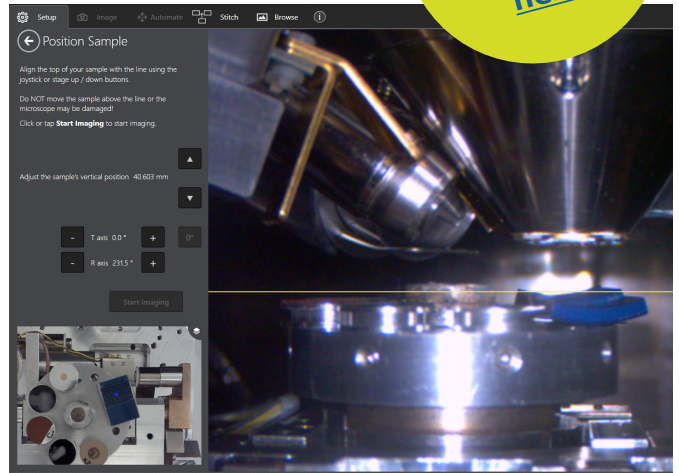
Samples can be easily annotated and measured or marked.

Use imaging auto functions, customizable parameters sets and broad navigation images to enhance your productivity. Switch between coarse and fine controls to make final image adjustments, quickly change detectors, views or stage positions for an uninterrupted workflow.

Availability

- Sigma 300
- Sigma VP
- EVO series

Experience SmartSEM Touch online [here](#)



System chamber imaged with the color chamberscope.

Ensure safe handling of your instrument through the Stage Safe Navigation feature. Individually set up the distance of your sample to the instrument's column while the yellow line ensures the minimum distance to be maintained.

