

Integrating ManageEngine ADSelfService Plus with Microsoft SharePoint

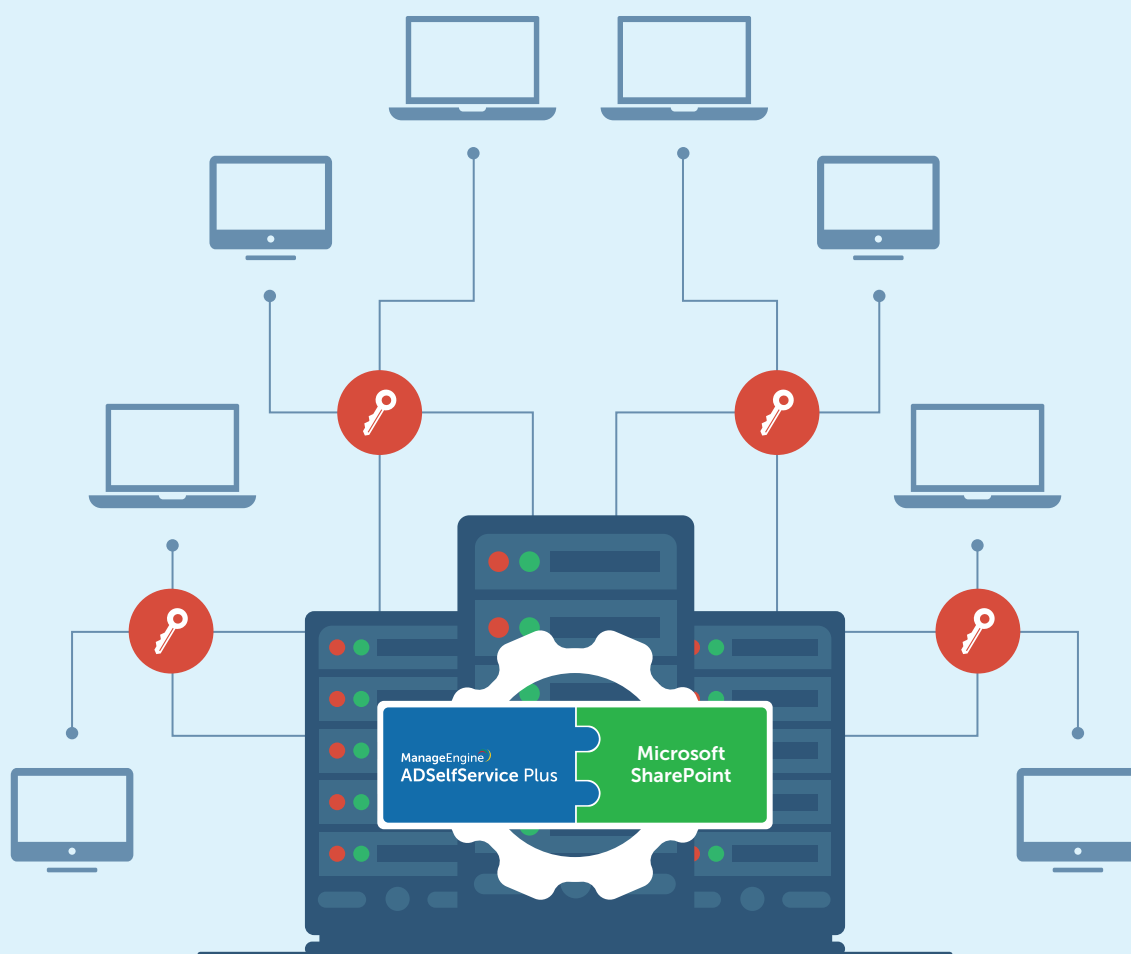




Table of Contents

Document summary	1
What is ADSelfService Plus?	1
What is SharePoint?	1
ADSelfService Plus' integration with SharePoint	1
Prerequisites	1
Step 1. Creating a new web application	1
Step 2. Creating a new site collection	3
Step 3. Enabling Forms-based Authentication	4
Integrating ADSelfService Plus with SharePoint	7
Step 1. Adding ADSelfService Plus as a web part in your SharePoint site	7
Step 2. Adding the self-service Reset Password/Account Unlock link in the SharePoint login page	9



Document summary

This document briefly describes what ADSelfService Plus and SharePoint are as well as what they do, then guides you through the steps involved in integrating ADSelfService Plus with SharePoint.

What is ADSelfService Plus?

ManageEngine ADSelfService Plus is a secure, web-based, end-user password reset management and single sign-on (SSO) solution. This solution helps domain users perform various self-service actions in Microsoft Active Directory (AD), including resetting passwords and updating profile information. ADSelfService Plus also provides users with one-click access to enterprise applications through AD-based SSO and secures access to network resources by enabling two-factor authentication for Windows logons.

What is SharePoint?

SharePoint is a web application platform developed by Microsoft. Using SharePoint, users can set up websites to share information, create and share documents, publish reports, etc., making it easier for them to collaborate with each other.

ADSelfService Plus' integration with SharePoint

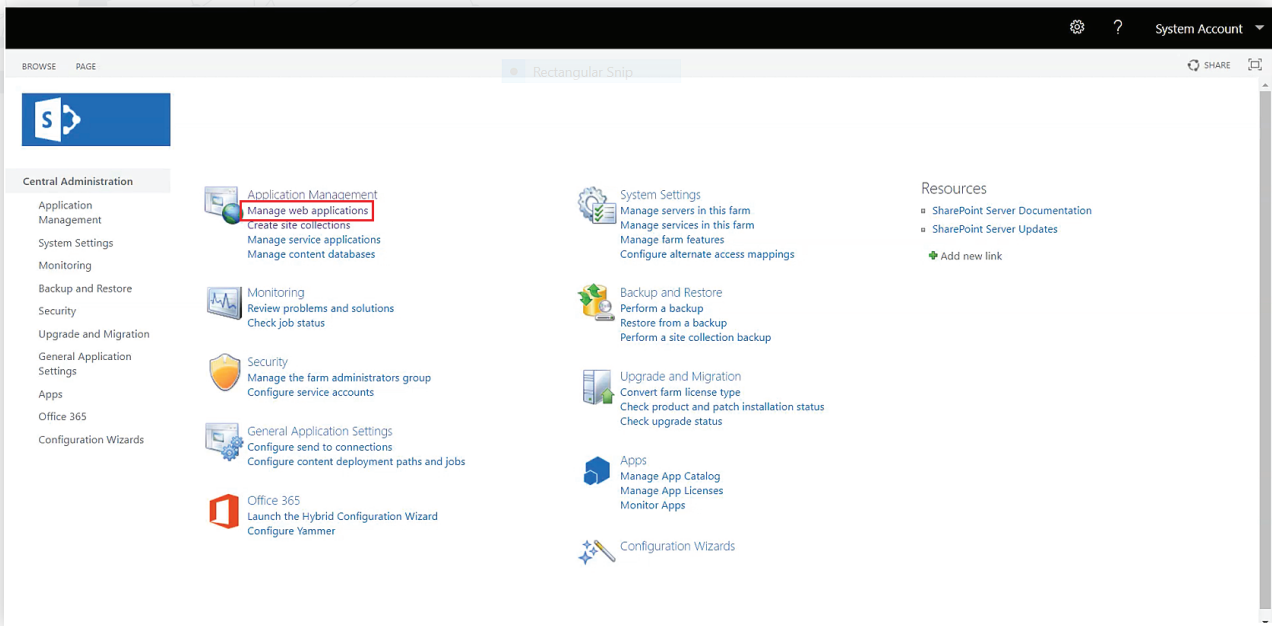
By integrating ADSelfService Plus with SharePoint, users will have easy access to ADSelfService Plus' self-service portal from their SharePoint site. Also, if you enable form-based authentication, users can securely reset their domain passwords and unlock their locked-out accounts, by themselves, right from SharePoint's login page.

Prerequisites

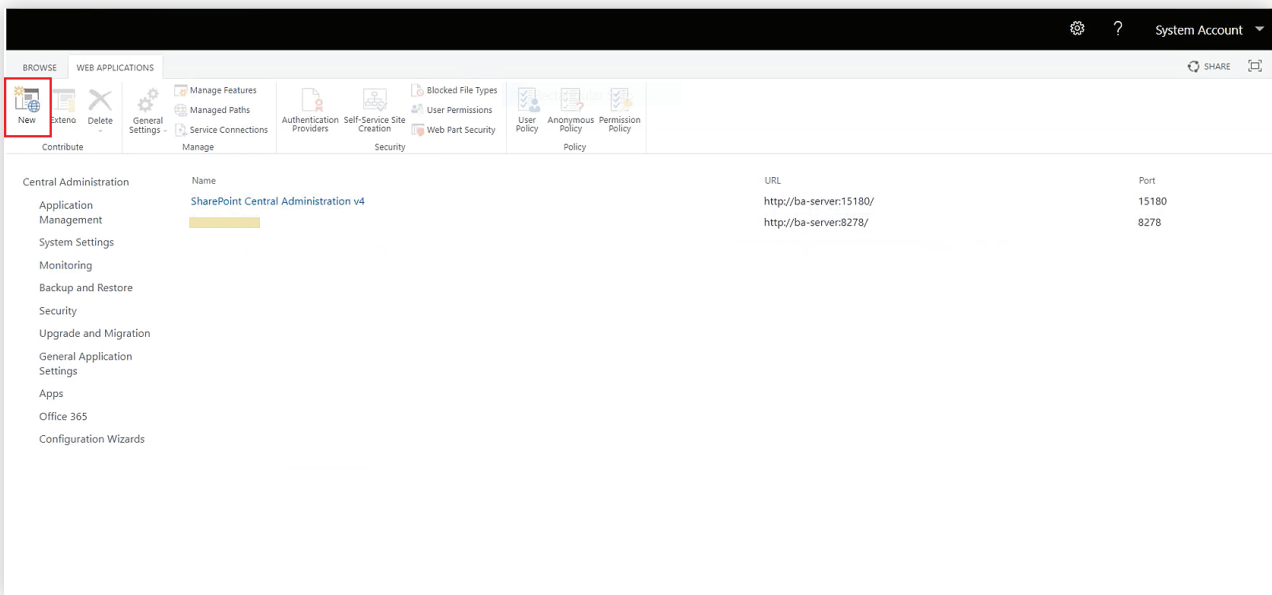
Step 1. Creating a new web application

If you've already created a new web application, you can skip this step.

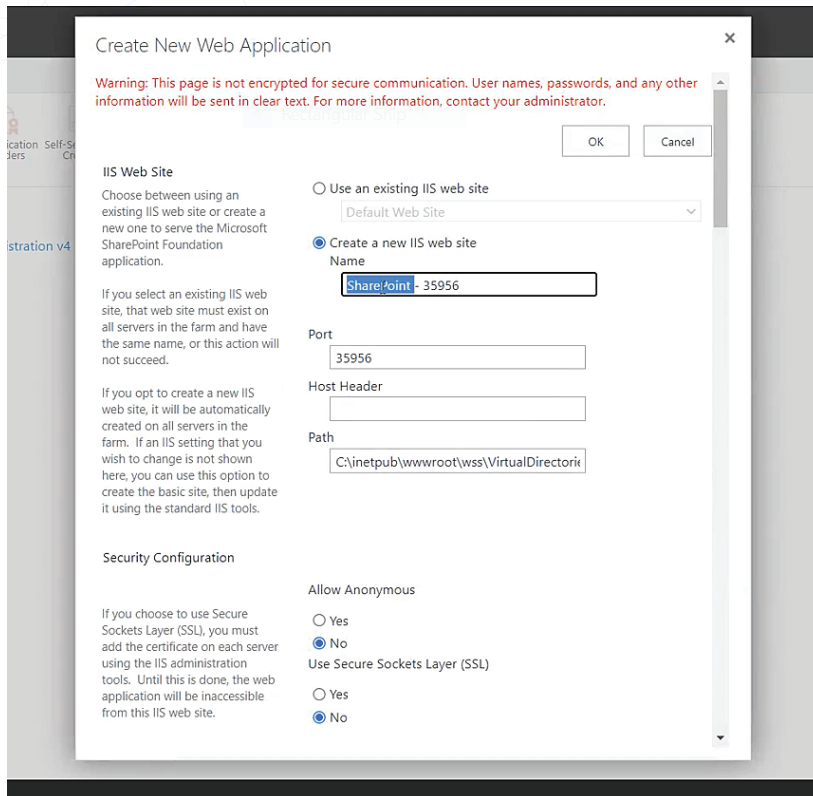
- On your browser, go to SharePoint's **Central Administration** page. **Example:**
`http://<share_point_server>:<port_number>`
- Navigate to **Application Management > Manage web applications**.



- In the *Web Application* tab that opens, click **New** at the top-left corner of the page.



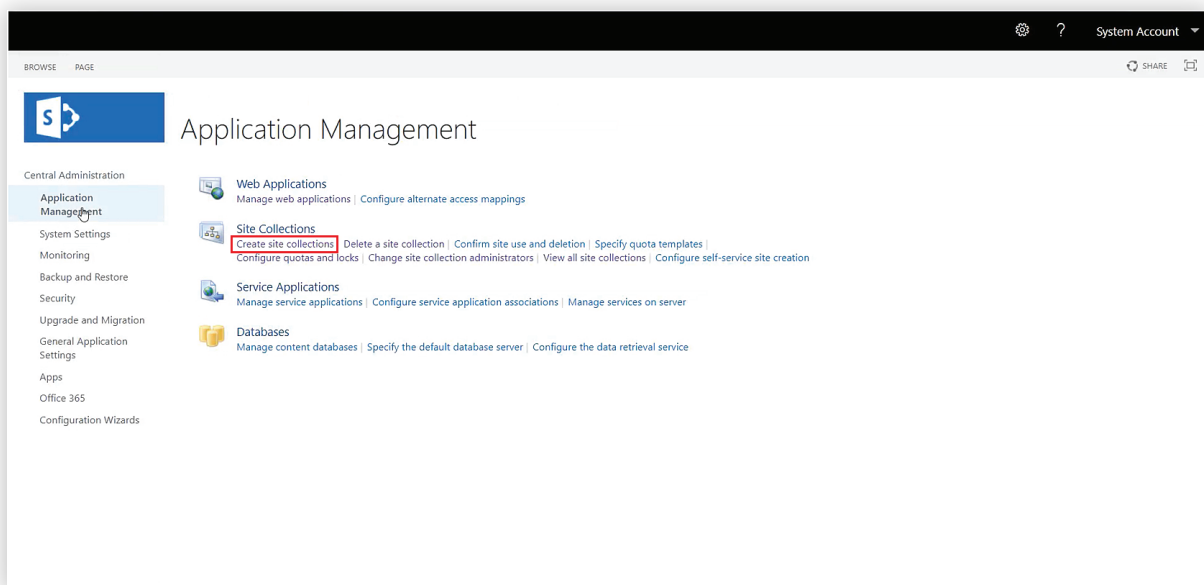
- In the *Create New Web Application* window that opens, enter the required details. Click **OK**.



Step 2. Creating a new site collection

If you've already created a new site collection, you can skip this step.

- Go to **Central Administration > Application Management**.
- Click **Create site collections** in the *Site Collections* section



- In the *Create Site Collection* page that opens, select your desired web application from the *Web Application* drop-down.

- Provide appropriate details for the **Title, Primary Site Collection Administrator**, and other required fields.
- In the *Web Site Address* section, provide the *Site* details in the appropriate field.
- Click **OK**.

Central Administration

Application Management

System Settings

Monitoring

Backup and Restore

Security

Upgrade and Migration

General Application Settings

Apps

Office 365

Configuration Wizards

Web Application

Select a web application.

Web Application:

To create a new web application go to [New Web Application](#) page.

Title and Description

Type a title and description for your new site. The title will be displayed on each page in the site.

Title:

Description:

Web Site Address

Specify the URL name and URL path to create a new site, or choose to create a site at a specific path.

URL:

To add a new URL Path go to the [Define Managed Paths](#) page.

Template Selection

Select a template:

Collaboration Enterprise Publishing Custom

Team site

Team site (classic experience)

Blog

Developer Site

Project Site

Community Site

A site with no connection to an Office 365 Group.

Primary Site Collection Administrator

Specify the administrator for this site collection. Only one user login can be provided; security groups are not supported.

User name:

Secondary Site Collection Administrator

Optionally specify a secondary site collection administrator. Only one user login can be provided; security groups are not supported.

User name:

Quota Template

Select a predefined quota template to limit resources used for this site collection.

Select a quota template:

No Quota

Storage limit:

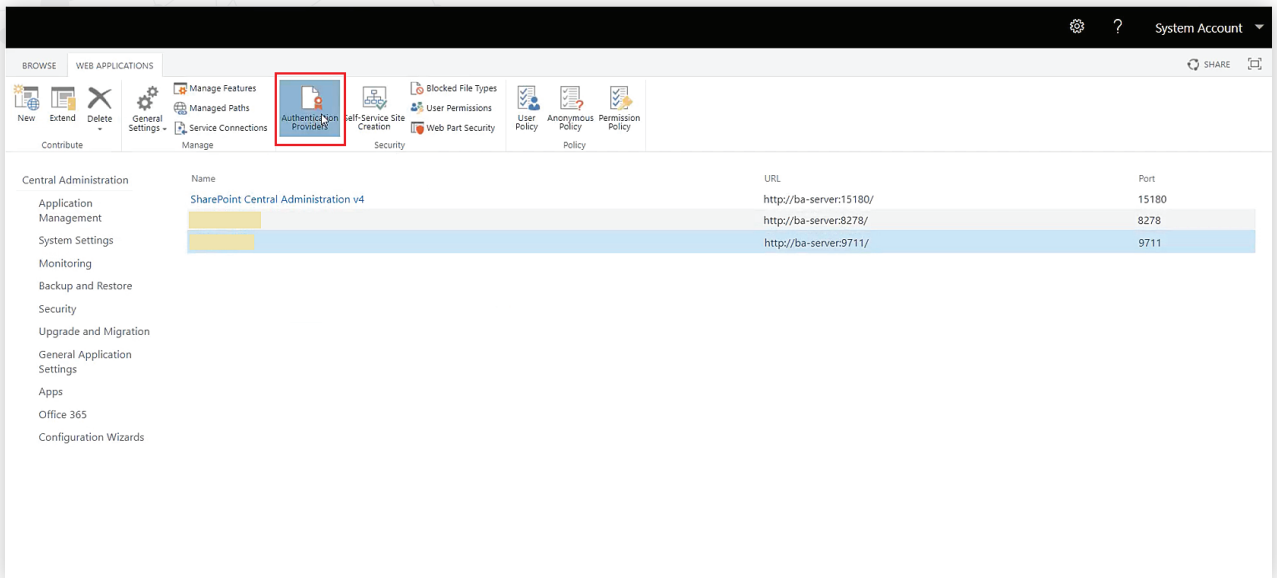
Number of invited users:

OK Cancel

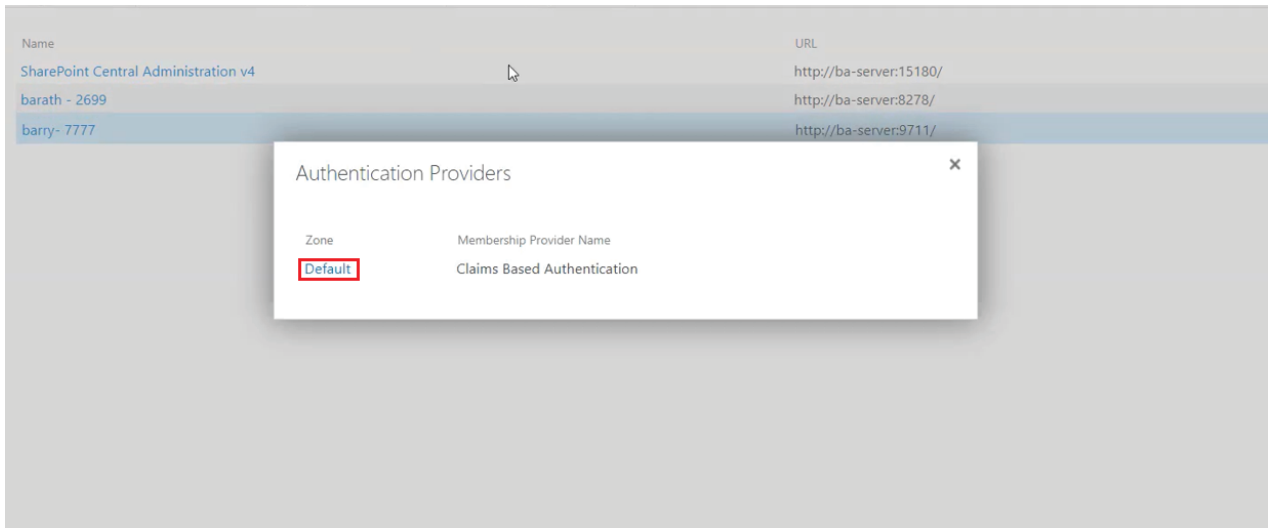
Step 3. Enabling Forms-based Authentication

You must configure *Forms-based Authentication* so that the login prompt with the **Reset Password/Unlock Account** link will appear when users open their SharePoint site. If you've already enabled Forms-based Authentication, you can skip this step.

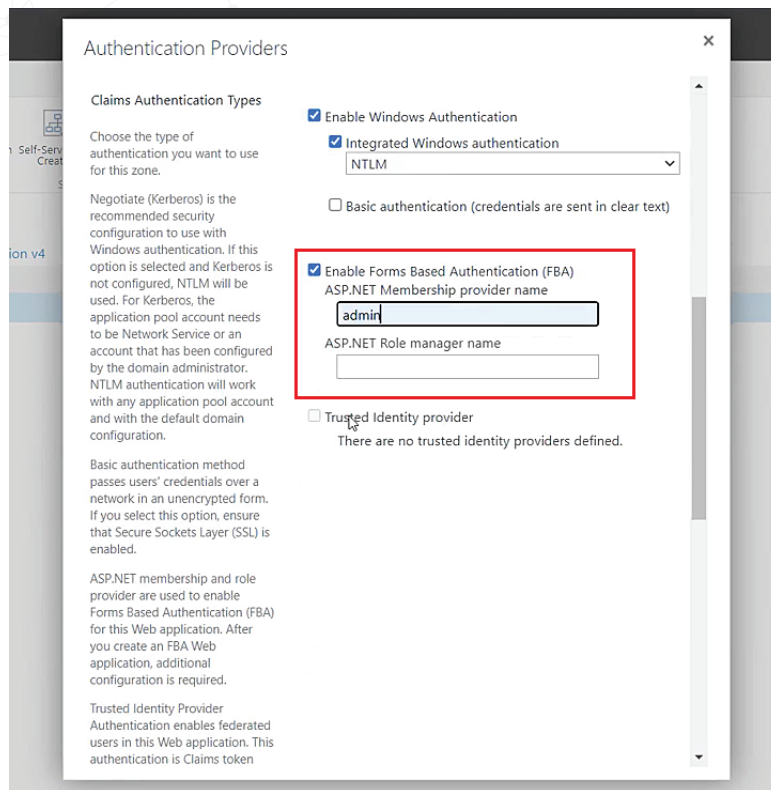
- Go to **Central Administration > Manage web application**.
- In the *Web Application* tab that opens, find the application you've created and **double-click** it.
- Click **Authentication Providers** in the *Web Application* section.



- Click the **Default** link to open the *Authentication Providers* window.



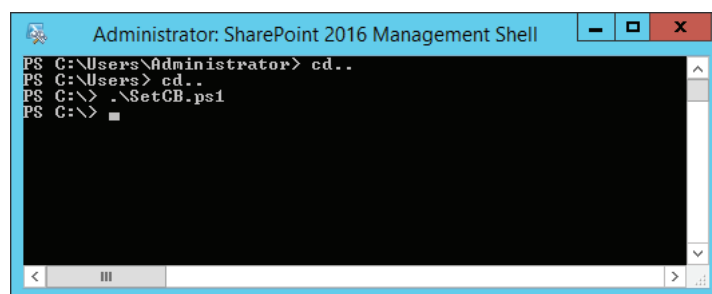
- Select the **Enable Forms Based Authentication (FBA)** option in the *Authentication Providers* window. Enter the **ASP.NET Membership** provider name in the field given.



- If the values under *Authentication Type* are disabled, create a PowerShell (.ps1) file using a word processor and paste the following code into it:

```
$setcba = Get-SPWebApplication "http://YourSiteURL/"
$setcba.UseClaimsAuthentication = 1;
$setcba.Update()
```

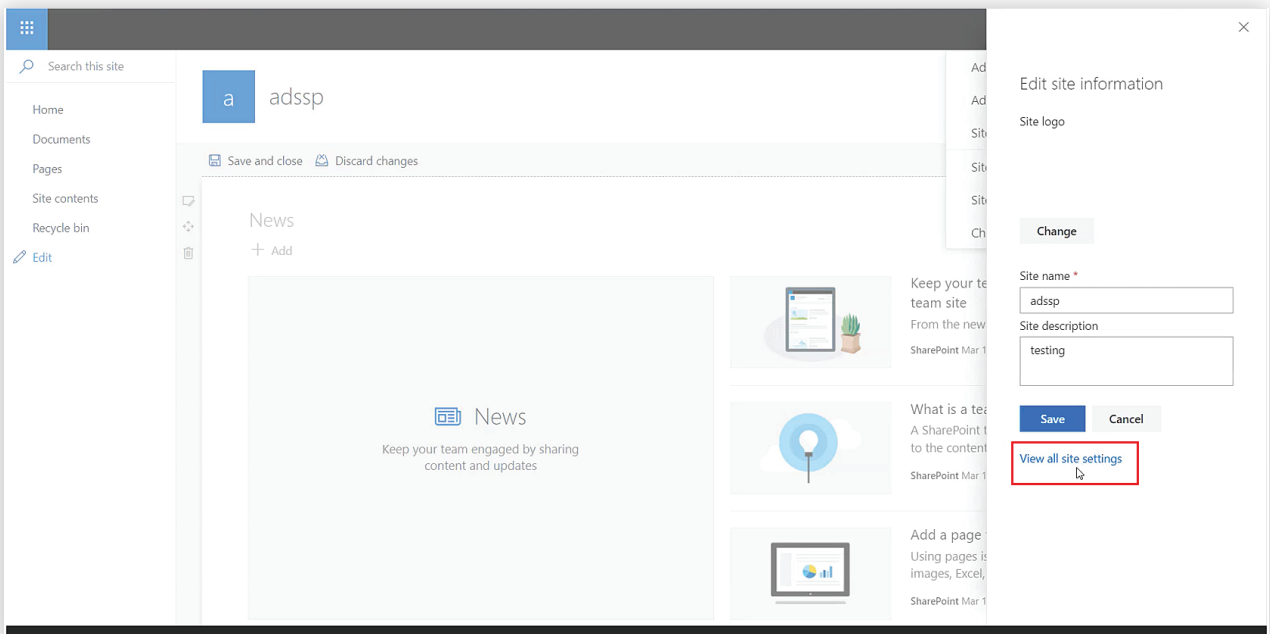
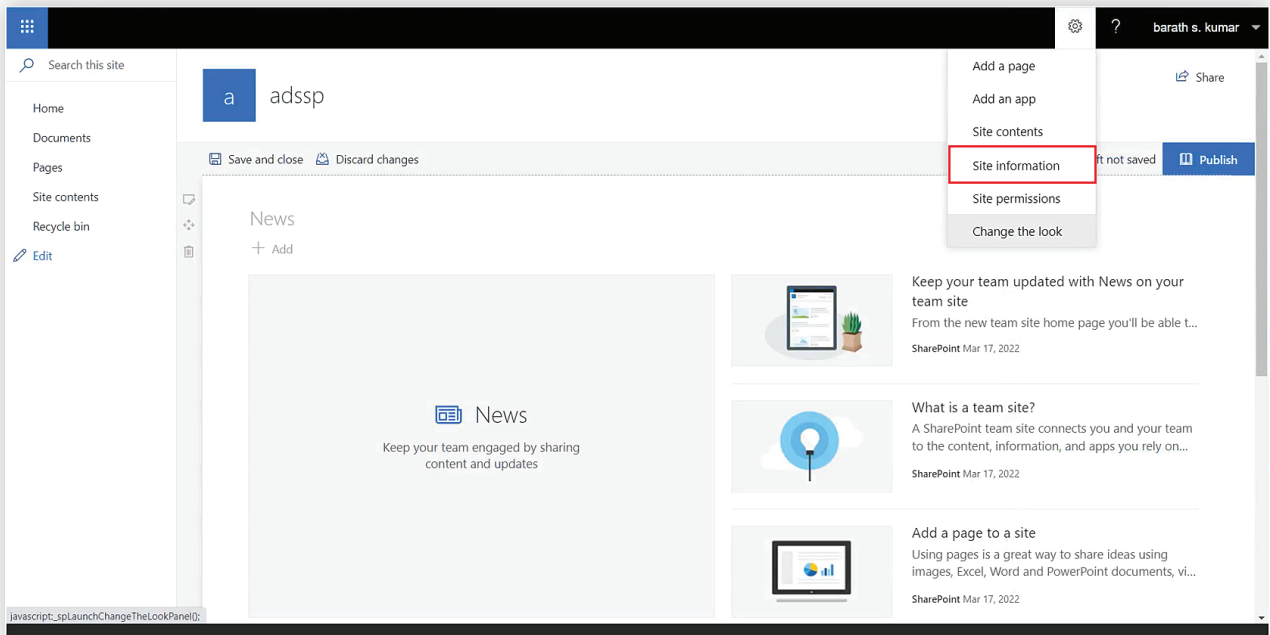
- Give it a name, like *SetCB.ps1*, and save it under the C drive on your SharePoint 2013/2016 server.
- Open **SharePoint 2013/2016 Management Shell**, then type `./SetCB.ps1`. Make sure you're under C: when you do this; if you're not, type in `cd..` until you reach C:.



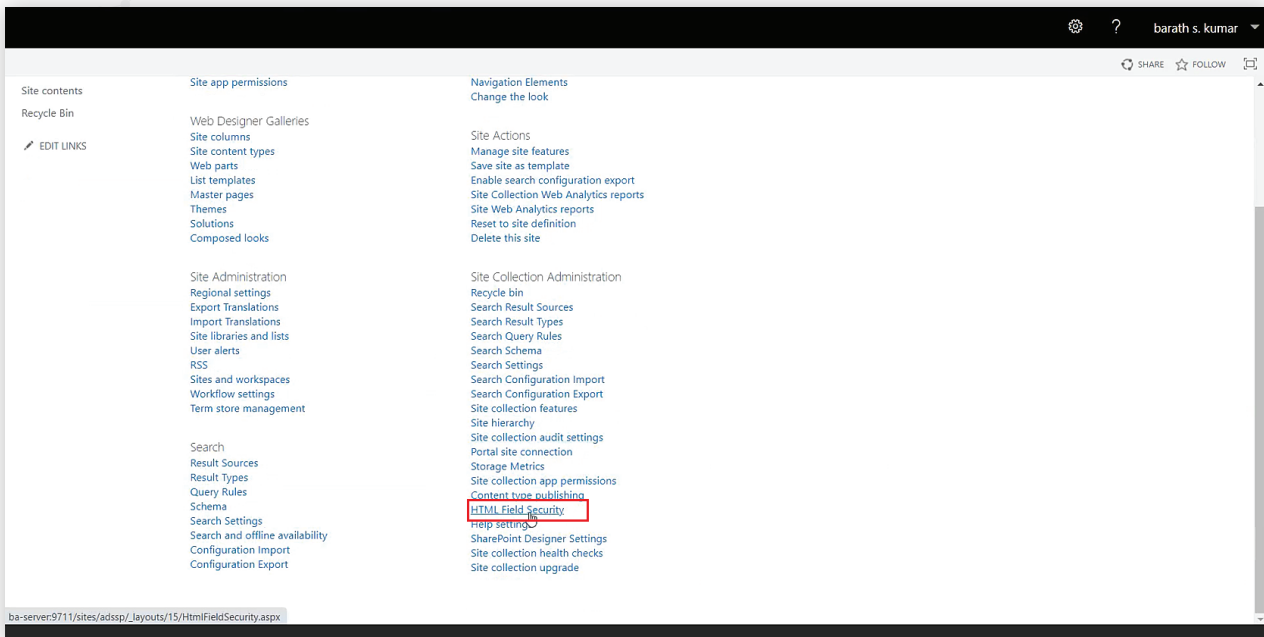
Integrating ADSelfService Plus with SharePoint

Step 1. Adding ADSelfService Plus as a web part in your SharePoint website

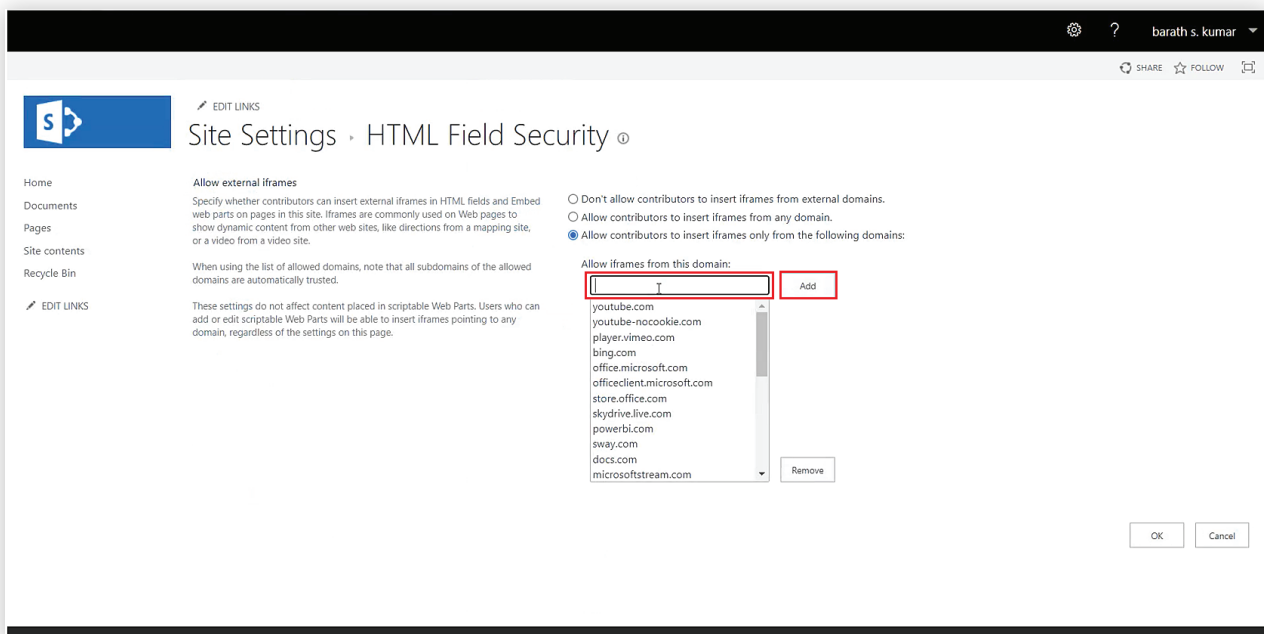
1. Open the SharePoint site collection created in **Step 2 of Prerequisites**. Log in using the credentials of the Primary Site Collection Administrator.
2. Click the **settings icon (⚙️)**, then click **Site information**. In the Edit site information pane that opens from the right, click **View all site settings**.



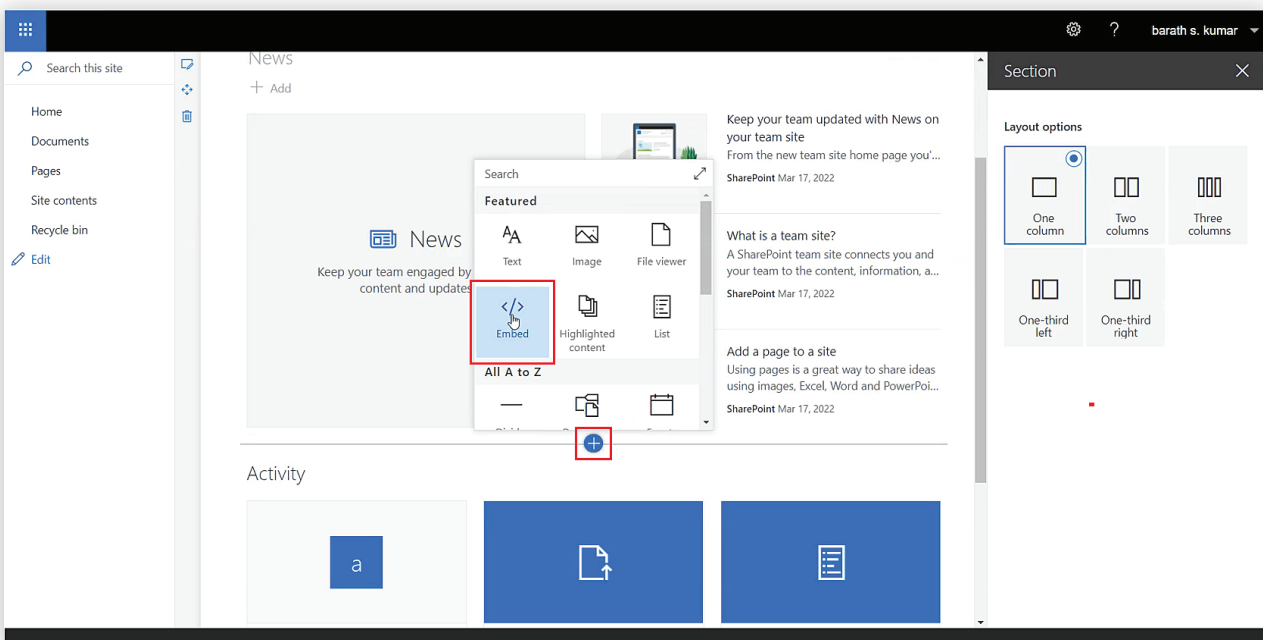
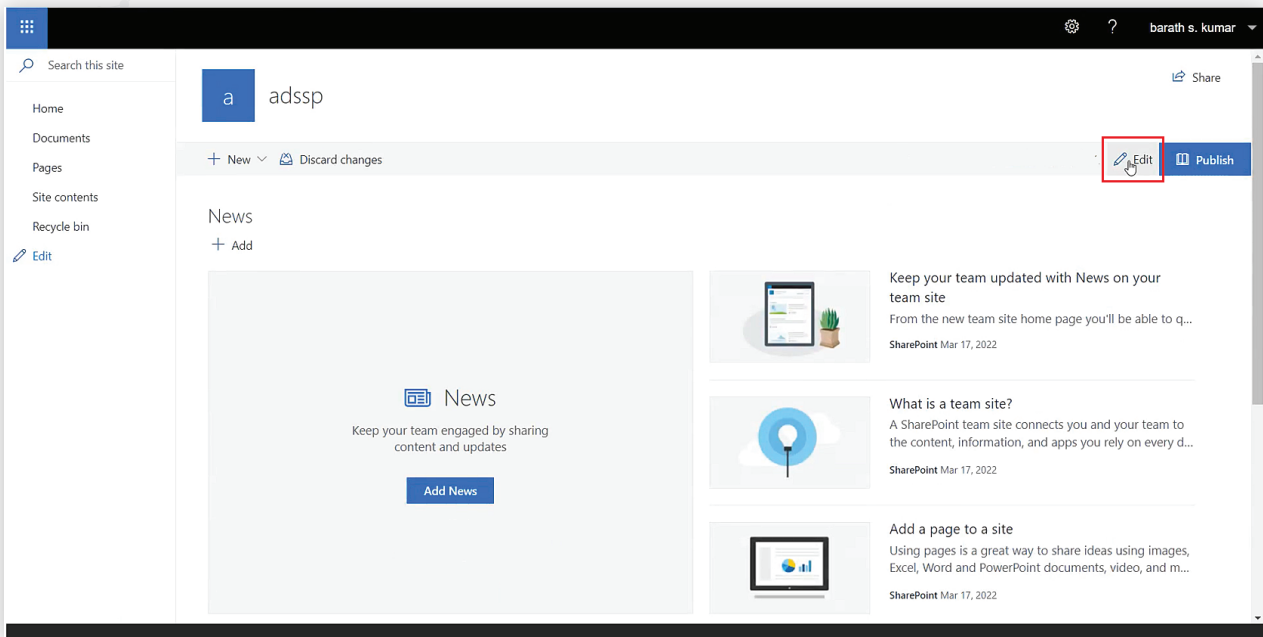
3. In the **Site settings** page, scroll down to **Site Collection Administration**, and click **HTML Field Security**.



4. The **Site settings > HTML Field Security** page will open.
5. Here, select **Allow contributors to insert iframes only from the following domains**, and include the name of the domain configured for ADSelfService Plus.
6. Click **OK**.



7. Go back to the home page, and click the **edit icon** (✎). The website will now be open for edits. Click the **add icon** (+), and click **Embed** from the pop-up that appears.

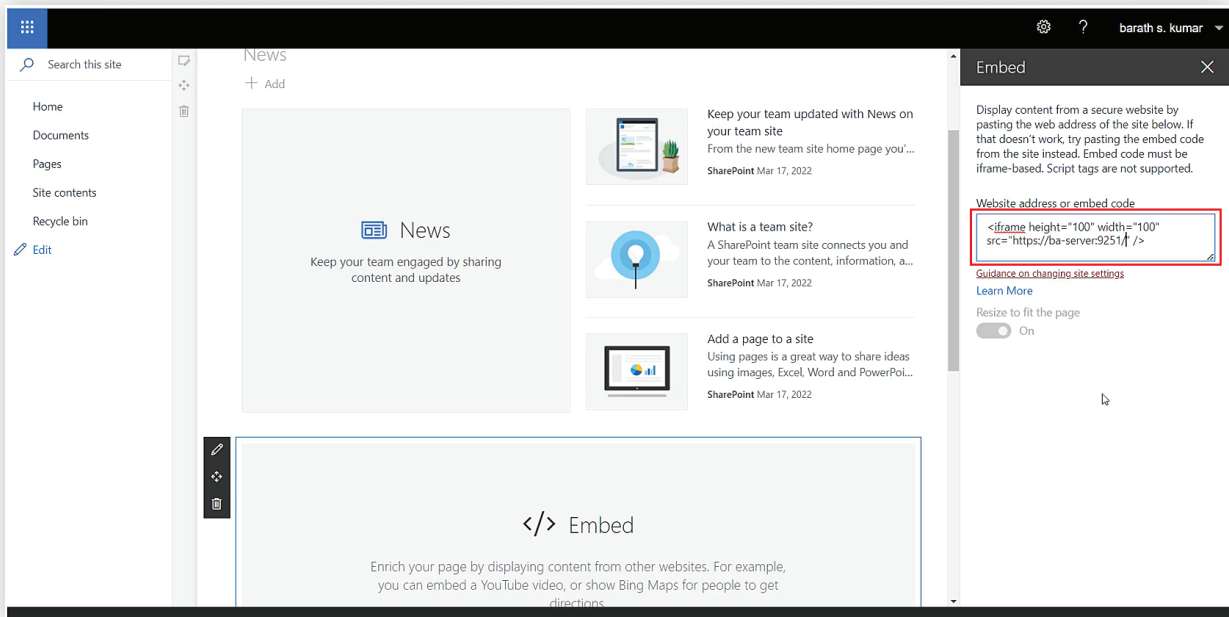


8. In the Embed pane that opens on the left, under Website address or embed code, enter the below command:

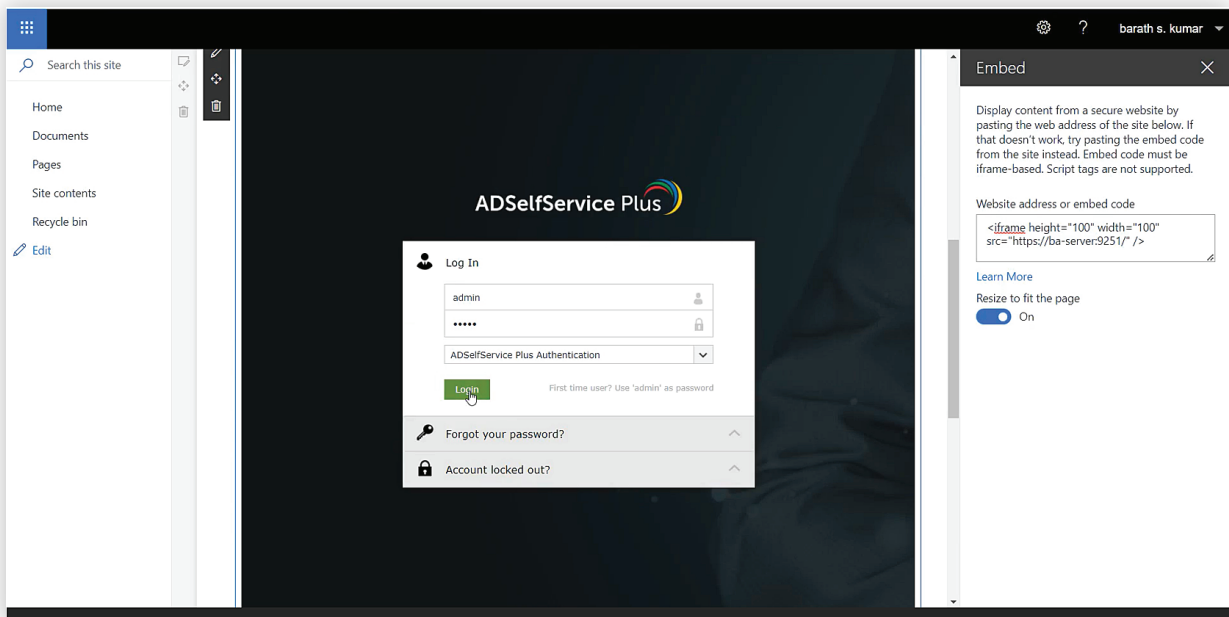
```
<iframe height="H" width="W" src="URL" />
```

In place of:

- H , enter the desired height of the ADSelfService Plus portal's web part.
- W , enter the desired width of the ADSelfService Plus portal's web part.
- URL , enter the access URL of the ADSelfService Plus portal.



9. You can now view ADSelfService Plus as a web part in your Sharepoint website.



Step 2. Adding the Reset Password/Account Unlock link in the SharePoint site's login page

- Log in to your SharePoint server with admin credentials.
- Navigate to
`C:\inetpub\wwwroot\wss\VirtualDirectories\<WEB_APPLICATION_PORT_NO>_forms.`
- Open the *Default.aspx* file and enter the following command in the position of your choosing:

```
<tr>  
<td colspan="2">  
<a href="http://<server_name>:<port_no>/showLogin.cc" target="_blank">Reset Password/Unlock  
Account</a>  
</td>  
</tr>
```
- In the above command, *server_name* should be the hostname in which ADSelfService Plus is installed. You'll also need to change the *port_no* in the above command.
- The **Reset Password/Unlock Account** link will now be shown in the SharePoint login page as shown below:



The screenshot shows a SharePoint login form with the following elements:

- User name: [text input field]
- Password: [password input field]
- Sign In button
- Sign me in automatically
- Reset Password/Unlock Account** link (highlighted with a red box)

That's it! You've now successfully integrated ADSelfService Plus with SharePoint.

If you need any further assistance or have any questions, send us an email at support@adselfserviceplus.com, or give us a call at +1.408.916.9890.

Visit: www.adselfserviceplus.com

ManageEngine ADSelfService Plus

ManageEngine ADSelfService Plus is an integrated self-service password management, MFA, and SSO solution. It offers self-service password reset and account unlock; endpoint MFA for machine, VPN, and OWA logins; SSO for enterprise applications; AD-based multi-platform password synchronization; password expiration notifications; and a password policy enforcer. It also provides Android and iOS mobile apps that facilitate self-service for end users anywhere, at anytime. ADSelfService Plus helps reduce IT expenses associated with help desk calls, improves the security of user accounts, and spares end users the frustration due to computer downtime. For more information about ADSelfService Plus, visit <https://www.manageengine.com>.

\$ Get Quote

↓ Download