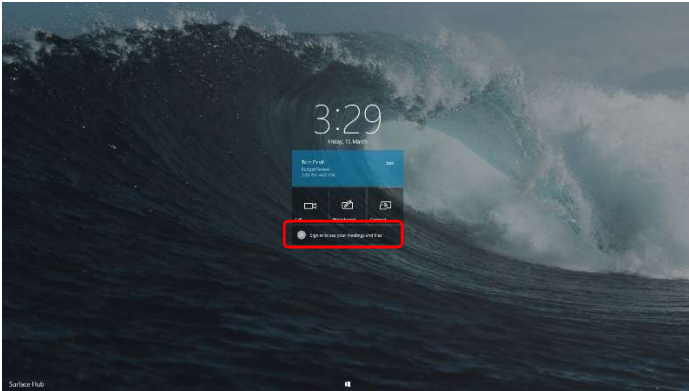
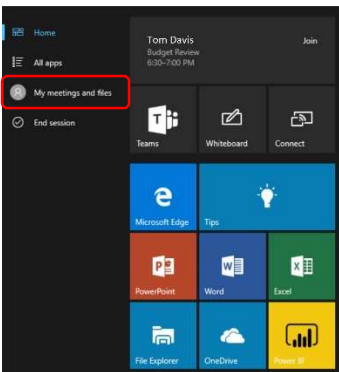


# Microsoft Surface Hub 2S

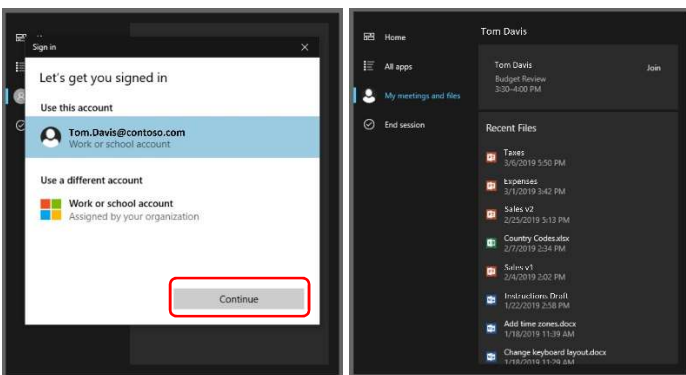
Sign in to view meetings and files



1. On the Welcome screen, select **Sign in to see your meetings and files**.



2. You can also open the Start menu and select **My meetings and files**.



3. If your account is displayed select **Continue** to login with your password. Otherwise, select Work or school account and enter your account information.
4. After logging in, you'll see your scheduled meetings and your recent files displayed.