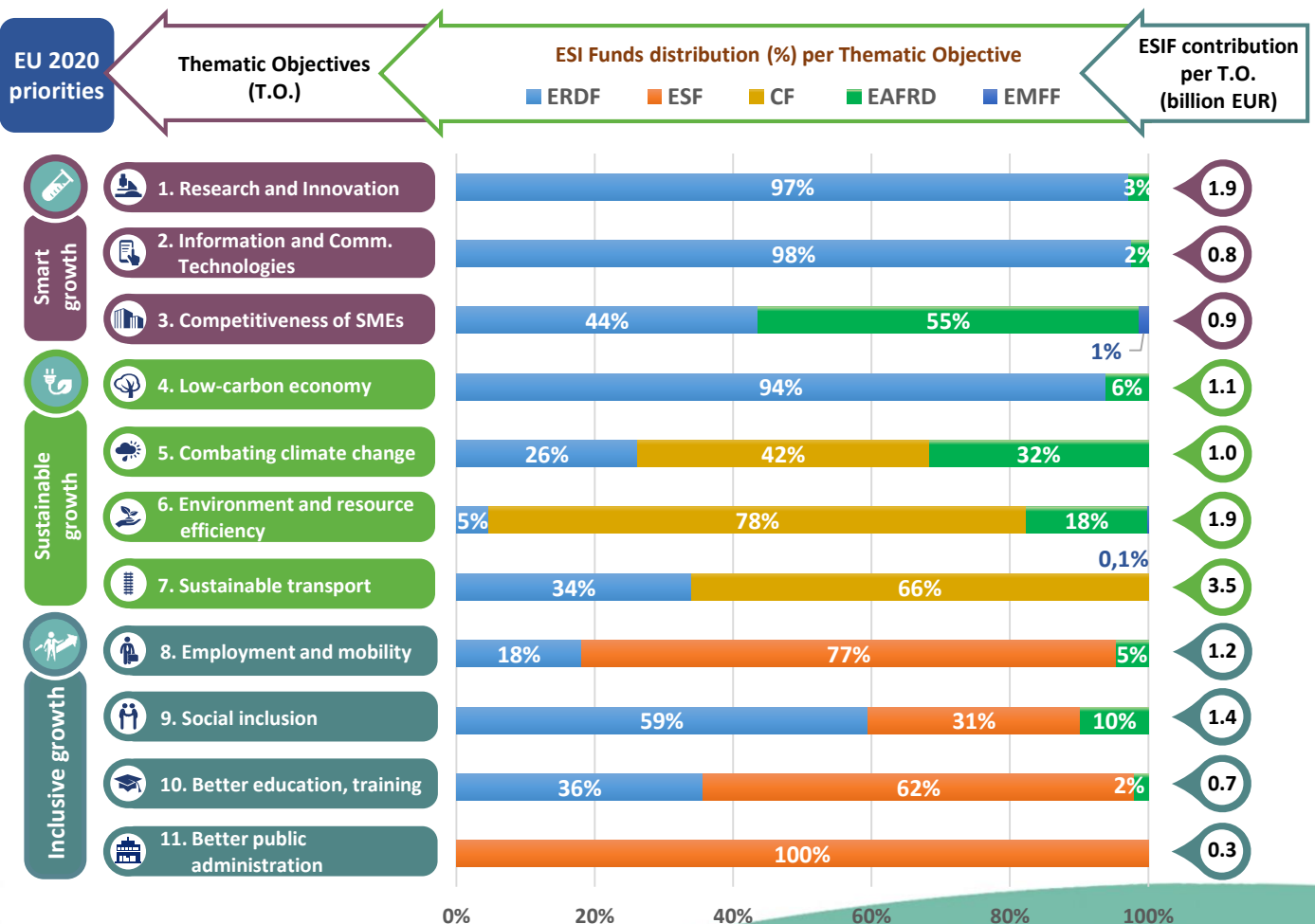
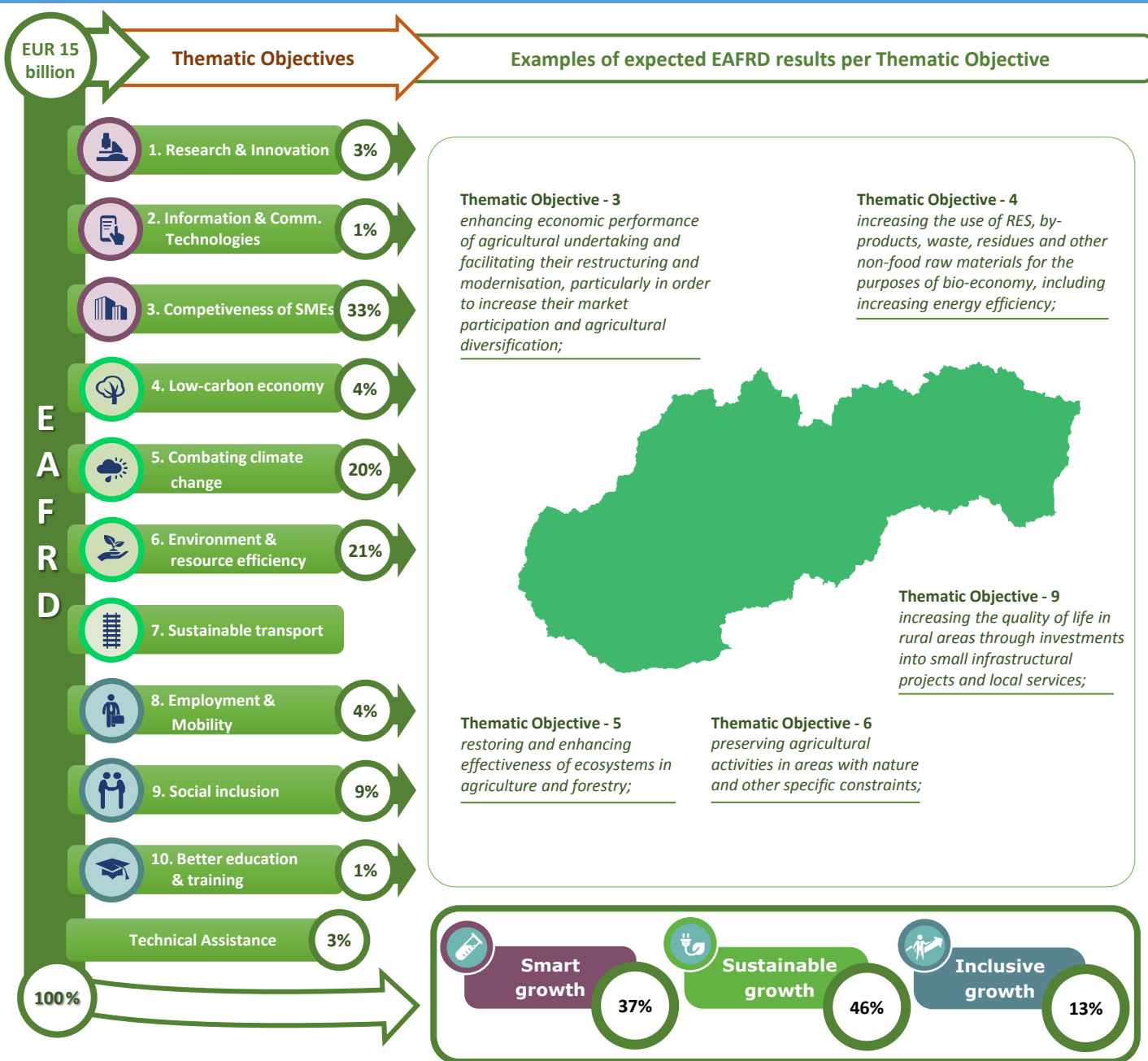


### Thematic objectives supported in Slovakia and ESIF contributions





## Integrated approaches to territorial development in rural areas

### Community Led Local Development (CLLD) / LEADER

**CLLD/LEADER funding in Slovakia:** Minimum 5% of the EAFRD budget for Slovakia.

**Multi-funded Local Development Strategies:** Yes, the integrated local development strategies will be prepared as multi-fund strategies, i.e., funded from both the EAFRD and the ERDF.

**Rural areas population limits:** Between 10 000 and 150 000 inhabitants.

<b>Responsible body:</b>	Government Office of the Slovak Republic
<b>Date of PA approval:</b>	20/06/2014

**Please note:** The data and figures presented in this summary come from the European Commission approved version of the PA for Slovakia. The information provided in this summary should not be considered a comprehensive account of the original PA content. For the full information please see the original document.

For more information please visit: [http://ec.europa.eu/contracts\\_grants/agreements/index\\_en.htm](http://ec.europa.eu/contracts_grants/agreements/index_en.htm)