

provinsje fryslân

provinsje fryslân  
provincie fryslân



## Broadening AECM

Additional tasks for climate, water and  
farmland birds

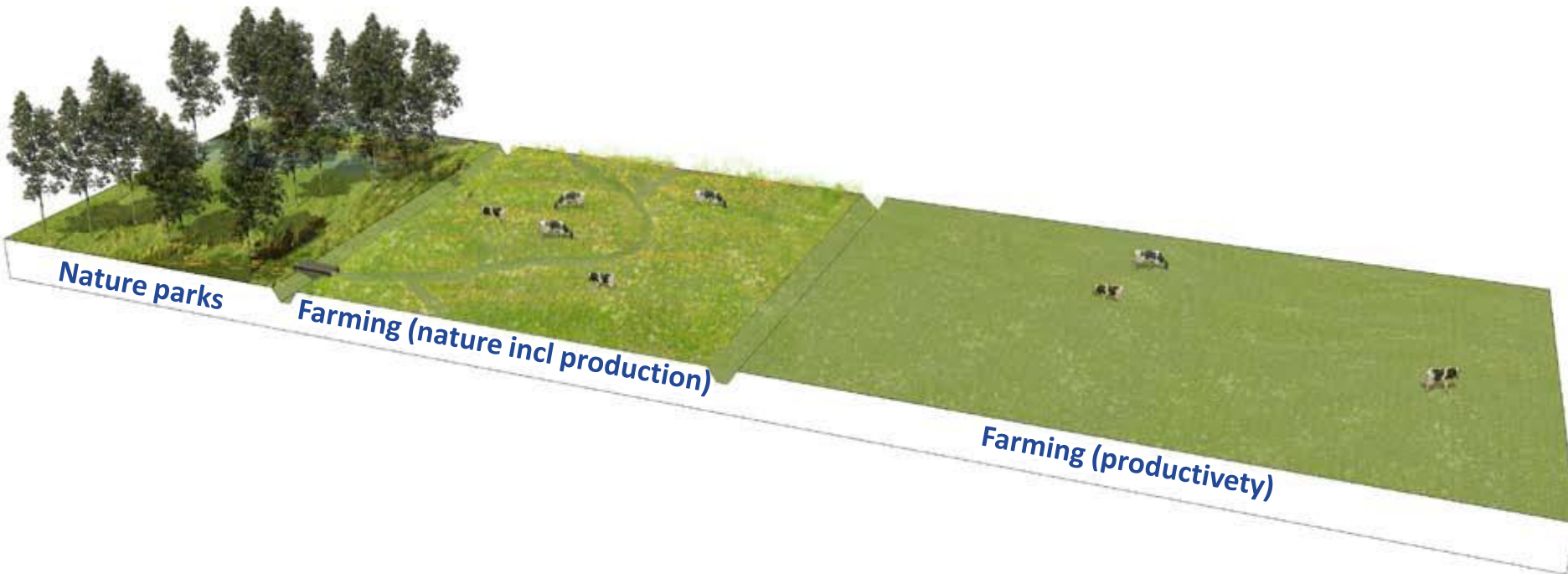
ENRD Networking – NRN Meeting Heerenveen, 9-22-2022  
Jetze Genee



# Nature- and landscape management



Fryslân, a combination of nature parks, nature inclusive agriculture and agriculture land





# Nature & landscape targets

## Policy Province

A - Nature reserve plan (reviewed annually)

B - Agricultural Nature & Landscape reserve (ANLb)

## Implementation management

A: Site managing organizations (3 big NGO's)

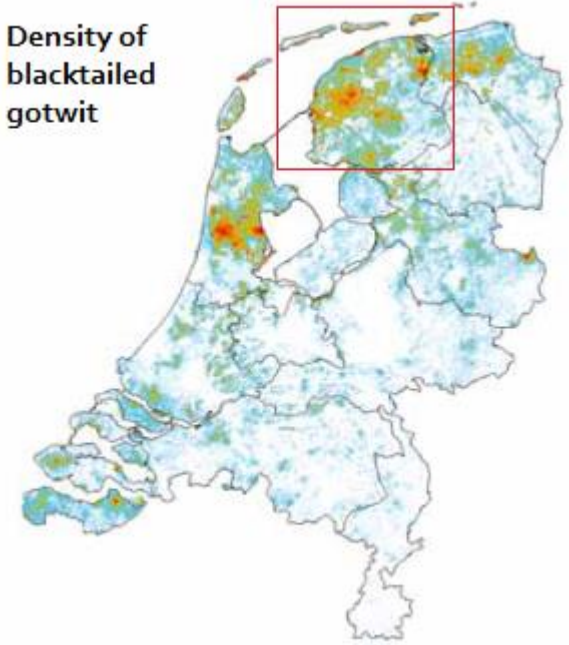
B: Agricultural collectives of farmers

- A. The provinces set the ambitions and nature goals for an area and elaborate these in their provincial nature management plans.
- B. This states where agricultural nature management will be applied.
- C. Then it is up to agricultural collectives, regional partnerships of farmers, to determine how agricultural nature management is applied in those areas.

The agricultural collectives can submit a subsidy application to the province. In this application, agricultural collectives show which nature performances they want to achieve at area level and how these contribute to the goals of the nature management plan.

provinsje fryslân  
provincie fryslân

Density of  
blacktailed  
gotwit



# How does the subsidy system work?

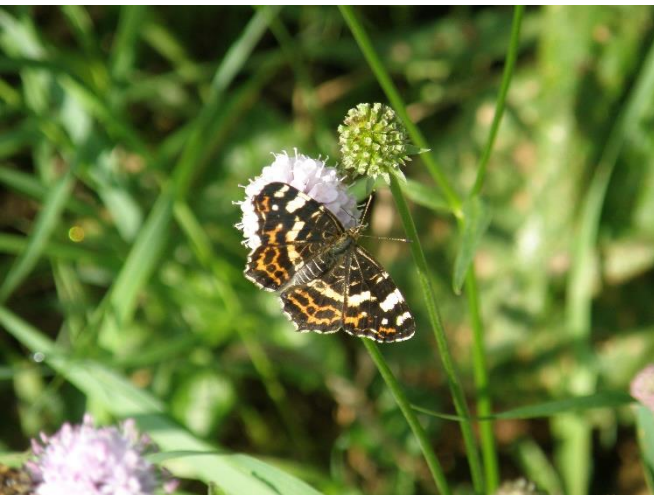
## Agricultural nature and landscape management ANLb:

**Who:** Agricultural collectives (40) united in the union organization BoerenNatuur.

**What:** Target species by habitat, improvement of water quality and climate mitigation and adaptation.

**Where:** Boundary via 4 habitats, including landscape veining, open farmland and water- and climatemanagement

**With which:** Funding from provinces and CAP EU.



# How does the ANLb scheme work?

**Grant obligations:** Management requirements must be met in relation to EU contribution.

**Management fee:** Lost income / labor and extra-legal activities. Via standard cost price / package.

**Policy:** Provincial notes on species policy and implementation framework for habitats agricultural nature management.

**Management:** Concludes collective management contract. RVO tests against criteria NBP provinces.

**How?:** Become a member of collective and provide suitable habitat for the target species.



# Management cycle AECM

## Plan:

Goals secured in Nature Reserve Plan.  
Collectives work with Area Plan and annual progress report.

## Do:

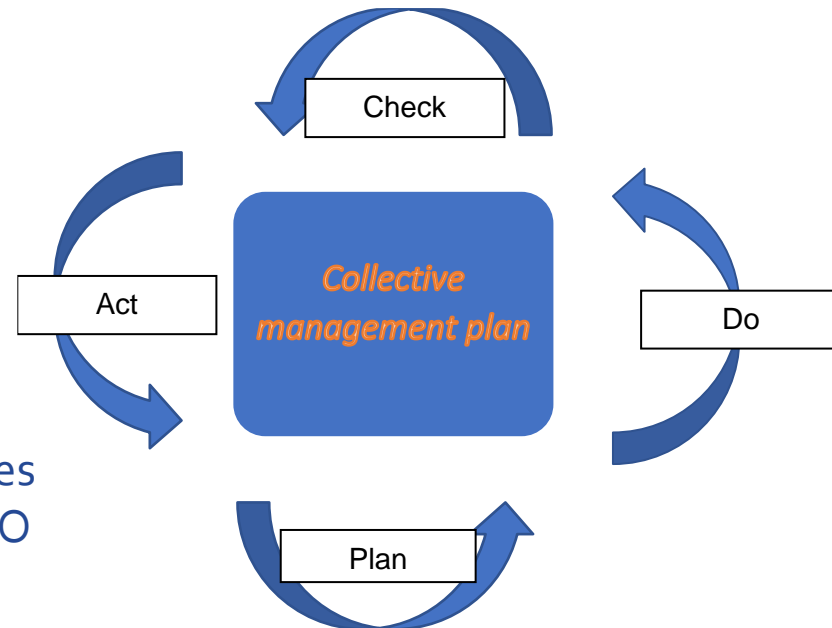
Collectives work in accordance with management packages in mosaics/clusters of management measures.

## Check:

Collectives work with their own inspection committees and are randomly checked by the national NVWA/RVO

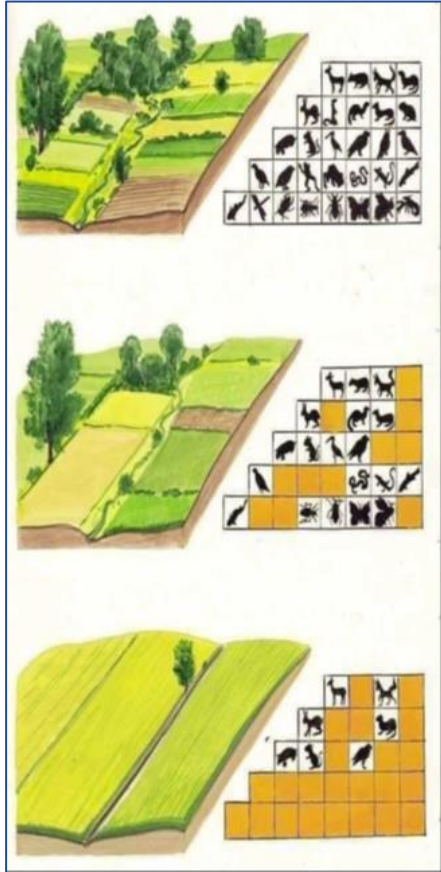
## Act:

The province steers during annual meeting and on the basis of progress reports. Further structural consultation with the collectives through the periodic consultation.





# Ratio Ecoscheme – ANLb



- Light ANLb measures fall away in the enhanced conditionality:
  - Mandatory buffer strip vs ANLb measures
  - Baseline conditions necessary for participation eco scheme and ANLb.
- Having ANLb management gives points for the eco-scheme
- Presence of non-productive area from the ANLb counts me for the basic GAEC8a requirement 4 % non-productive area.
- Eco scheme can be used perfectly within the area plan collectively.
- Opportunity for the missing link in clusters of management?
- Higher ambition than the current greening
- Optimization basic biodiversity in rural areas vs staple food ecosystem ANLb target species.



# Focus on habitats

Open grassland

Wet meandering veins

Dry meandering veins

Open arable land

- meadow farmland

- ditches, ponds and banks

- hedgerows

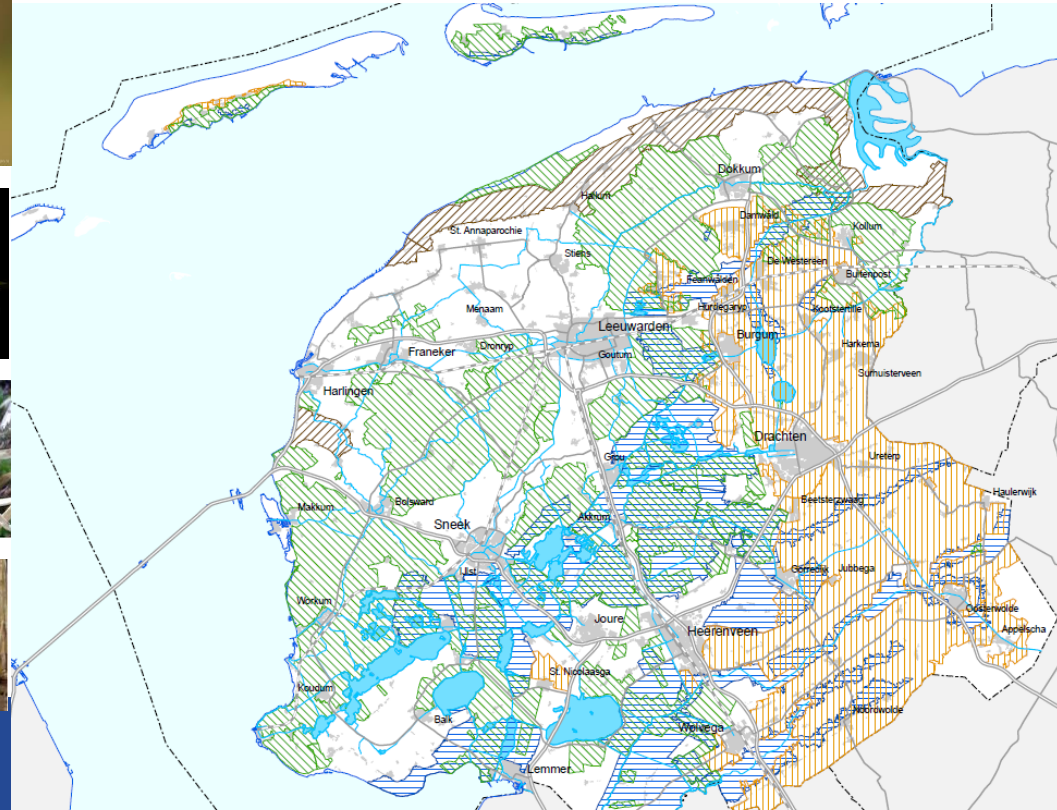
- arable farmland

Based on species

- Fish
- Birds
- Mammals
- Amphibians
- Insects
- Trees



By realizing good habitats





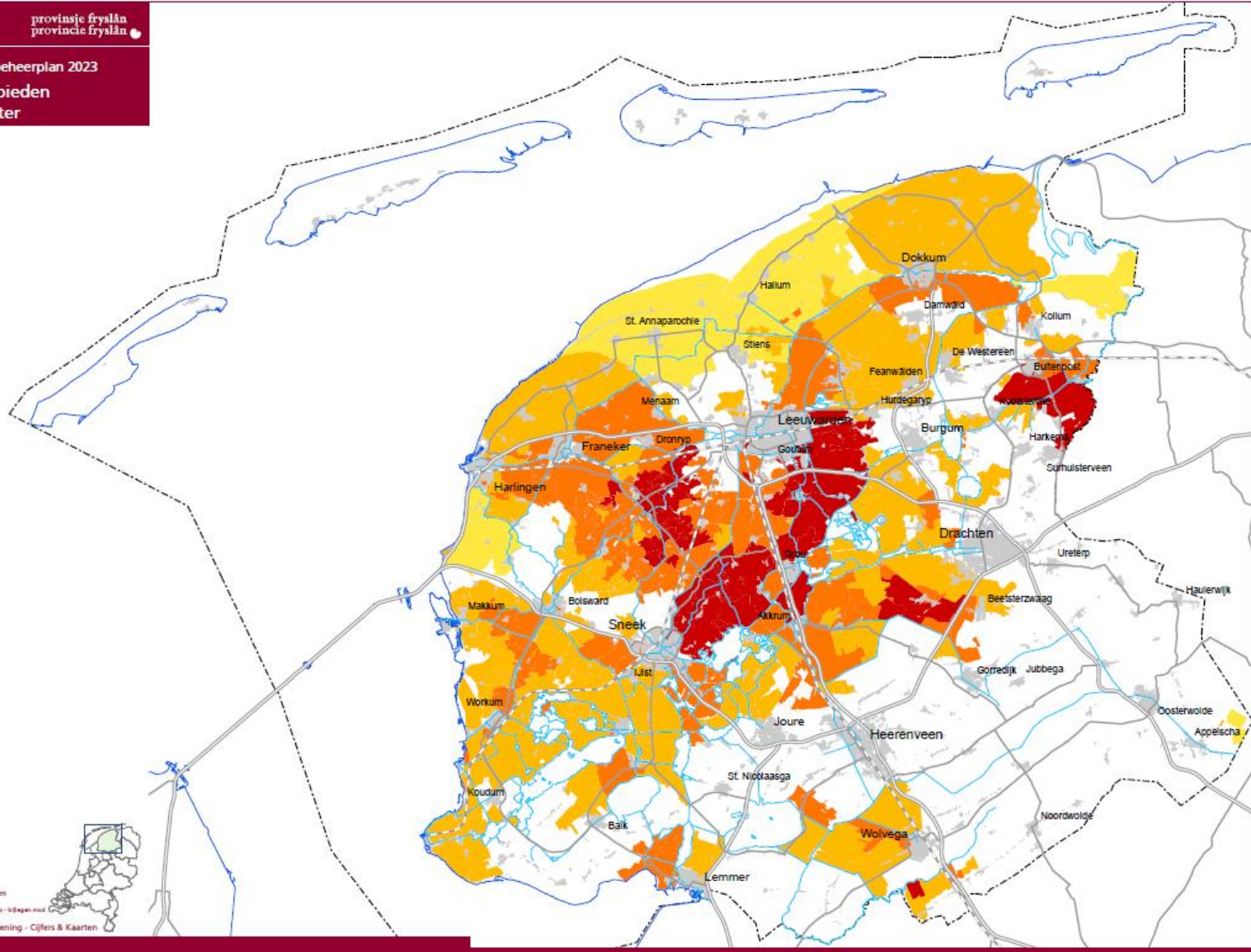
# Climate & Water waterquality and climate measures

provinsje fryslân  
provincie fryslân 



# Climate & Water

## waterquality measures focus areas



Prioriteit

- 1
- 2
- 3
- 4

0 2 4 6 8 10 km

© Deelnemers aan het Natuurbeheerplan 2023

kaart afdeling Informatievoorziening - Cijfers & Kaarten



# Questions?

provinsje fryslân  
provincie fryslân 

