

**3rd meeting of the Thematic Group on  
Resource Efficient Rural Economy**

**Initial findings – work in progress**  
**Greek case study**

**Alex Papakonstantinou, ENRD CP**

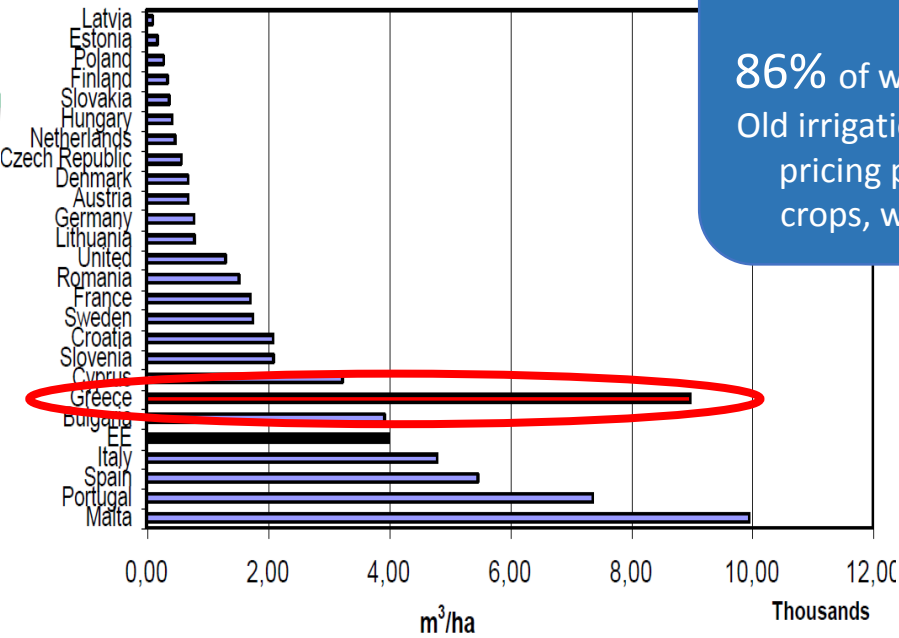
**Brussels – 07 March 2017**

# Rural areas in Greece – Facts

- *Rural areas cover **94.3%** of the territory (82.2% Predominantly rural +12.1% intermediate)*
- ***18.9%** of UAA classified Natura 2000 area*
- *Forests cover **49.6%** of the total surface*
- *Farming intensity (UAA) (2007): - 40.3% low      / 40.9% EU-25  
- 37.5% medium / 32.8% EU-25  
- 22.2% high      / 26.3% EU-25*
- ***50%** of agricultural holdings is below 2 Ha*

# Water, soil & CO<sub>2</sub> situation in Greece

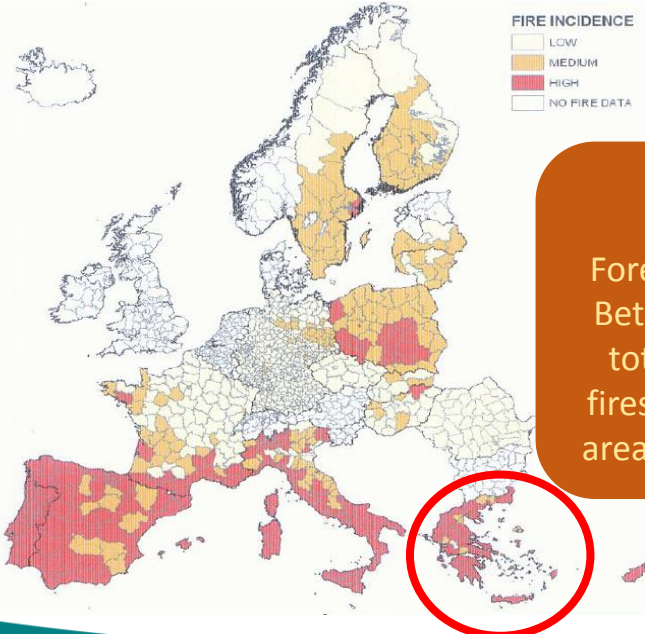
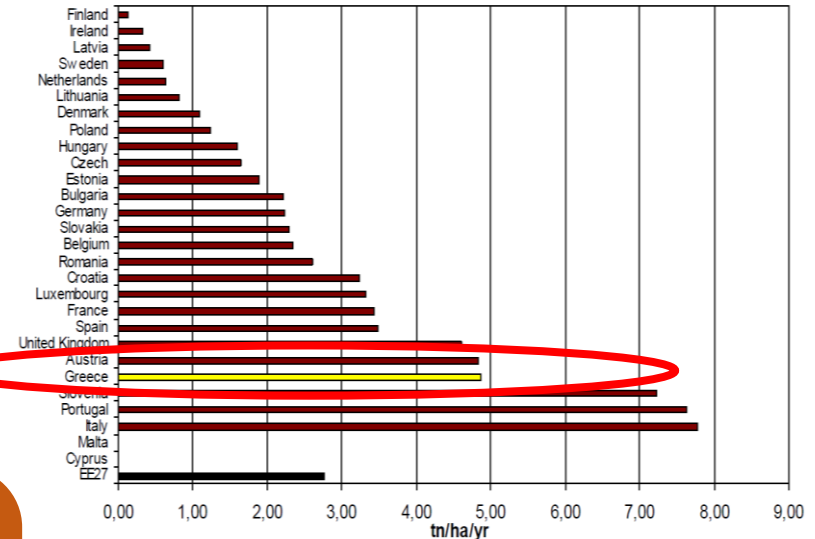
Water abstraction in agriculture per ha



## Water

86% of water used in agriculture!  
Old irrigation infrastructure, lack of pricing policy, water intensive crops, wasteful practices, etc.

Soil erosion by water



## CO<sub>2</sub>

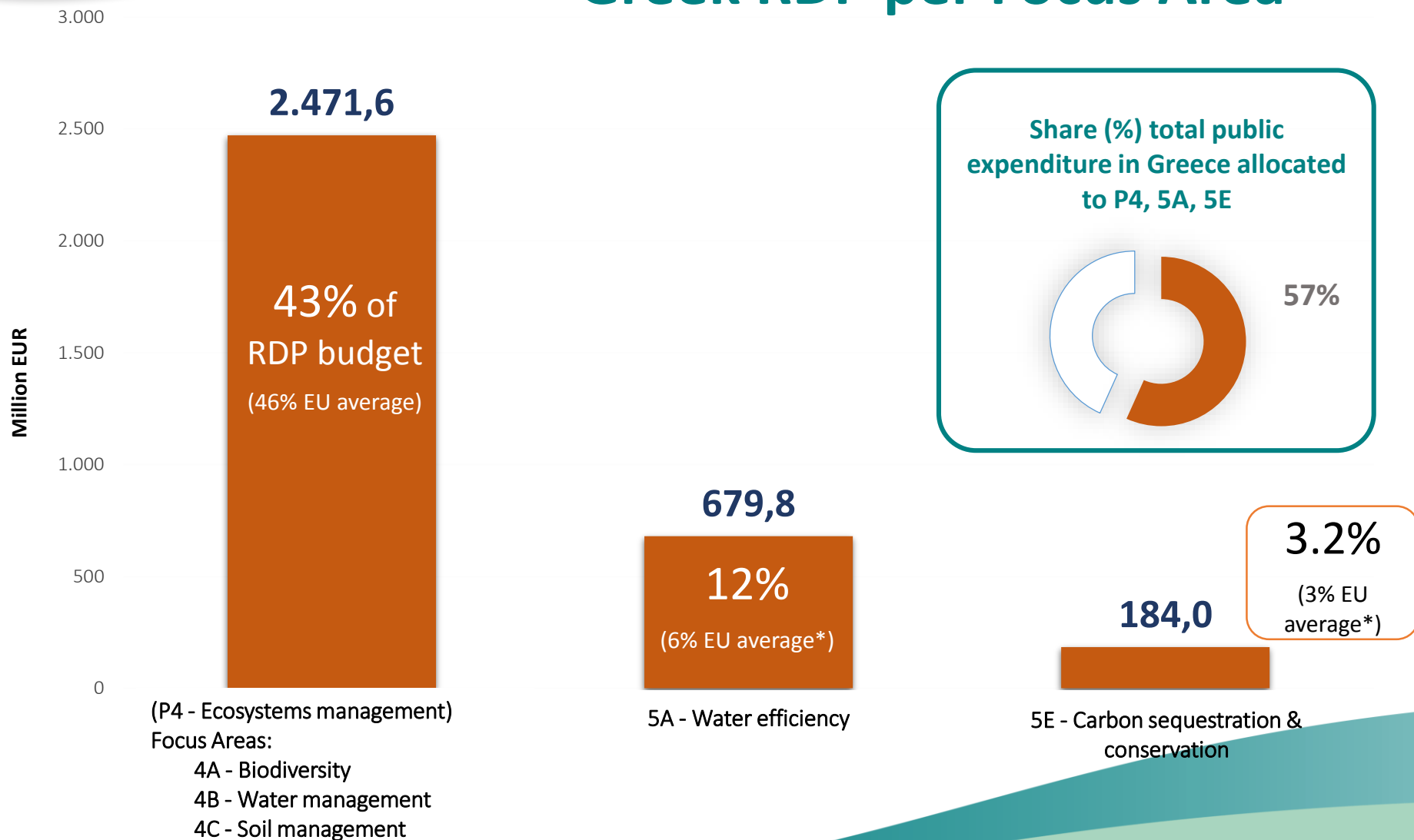
Forest fires is a problem. Between 2000-2010 the total number of forest fires was 1 670 and total area burned 497 172 ha.

## Soil

35-40% of total land territory under threat of desertification!

Due to water, wind, plowing & there is low content in organic matter.

# Total public expenditure of the Greek RDP per Focus Area



\* Average among MS whose RDPs have activated the FA.

# Main measures used per Focus Area

## Priority 4 – Ecosystems management (4A+4B+4C)

- M01 - Knowledge transfer and information actions
- M02 - Advisory services, farm management and farm relief services
- M04 - Investments in physical assets
- M07 - Basic services and village renewal in rural areas
- M08 - Forest investments
- M10 - Agri-environment-climate
- M11 - Organic farming
- M12 - Natura 2000 and Water Framework Directive payments
- M13 - Payments to areas facing natural or other specific constraints
- M16 - Co-operation

## Focus Area 5A – Water use efficiency

- M01 - Knowledge transfer and information actions
- M02 - Advisory services, farm management and farm relief services
- M04 - Investments in physical assets
- M16 - Co-operation

## Focus Area 5E – Carbon conservation & sequestration

- M01 - Knowledge transfer and information actions
- M02 - Advisory services, farm management and farm relief services
- M04 - Investments in physical assets
- M08 - Forest investments
- M10 - Agri-environment-climate
- M16 - Co-operation

# Key RDP measures used & expected achievements

- **M04 - Investments in physical assets** (1.5 bn) of which 43% allocated to 5A Water efficiency (647 mil EUR)
- **M13 - Payments to areas facing constraints** (1.1 bn EUR) allocated to P4 (100%)
- **M11 – Organic farming** (801.2 mil EUR) of which 65% allocated to P4 (519 mil EUR)
- **M10 - Agri-environment-climate** (472.2 mil EUR) of which 91% to P4 and 3% to 5E
- **M08 - Forest investments** (339.5 mil) of which 57% to P4 Ecosystems management (195 mil EUR) and 35% to 5E Carbon sequester. & conservation (118 mil EUR)

## 4B - Water management

- **12.01 %** of agricultural land under management contracts to improve water management
- **0.04 %** of forestry land under management contracts to improve water management

## 4C – Soil erosion & management

- **10.7 %** of agricultural land under management contracts to improve soil management and/or prevent soil erosion
- **0.02 %** of forestry land under management contracts to improve soil management and/or prevent soil erosion

## 5A – Water efficiency

- **5.0 %** of irrigated land switching to more efficient irrigation system

## 5E – Carbon conservation & sequestration

- **0.3 %** of agricultural and forest land under management contracts contributing to carbon sequestration and conservation
- **70 000 ha** for prevention of forest damages

# Resource efficiency

## Some stakeholder perspectives

### MOTIVATION GAP

#### Organic farming

Very high demand!  
Motives unclear (extra income for marginal land, already no inputs are used)

#### Profit vs environment

Farmers prefer the safe option that they know to ensure their annual income rather than experimenting/testing.

#### Young vs old farmer

Very different approach towards resource efficiency between new farmers and old ones (majority).

#### Changing the culture

It is a process of changing the way of thinking and working. It is difficult, it takes time but it will happen slowly.

### KNOWLEDGE GAP

#### Farmers Lack of knowledge

Big problem. Major increase in funding on M1 and M2. 5 out of 6 new training packages addressing it.

#### Limited information

Farmers seek advice from those whom they feel closer – the advisors of input industry.

#### Environmental data

There are problems with the availability of environmental data which affects WFD, RBMP and thus RDP measures design

#### Coordination between Ministries

Forestry measures under Ministry of Environment. Different objectives, processes thus some complications.

### POLICY GAP

#### Water use efficiency (5E)

Major objective of the Greek programme & major delays with the implementation of WFD.

#### M4 – Irrigation works

For projects up to 2.2 mil EUR delegated management to regional administration. Concerns about sufficient staff.

#### AECM + organic farming

Criteria have been established, as a bonus for Natura, HNV, and nitrate affected areas.