



MAGAZINE TO THE ANNUAL REPORT 2011

---

Creating the future.  
Forming real value.

---

**GILDEMEISTER**

---

# Creating the future. Forming real value.

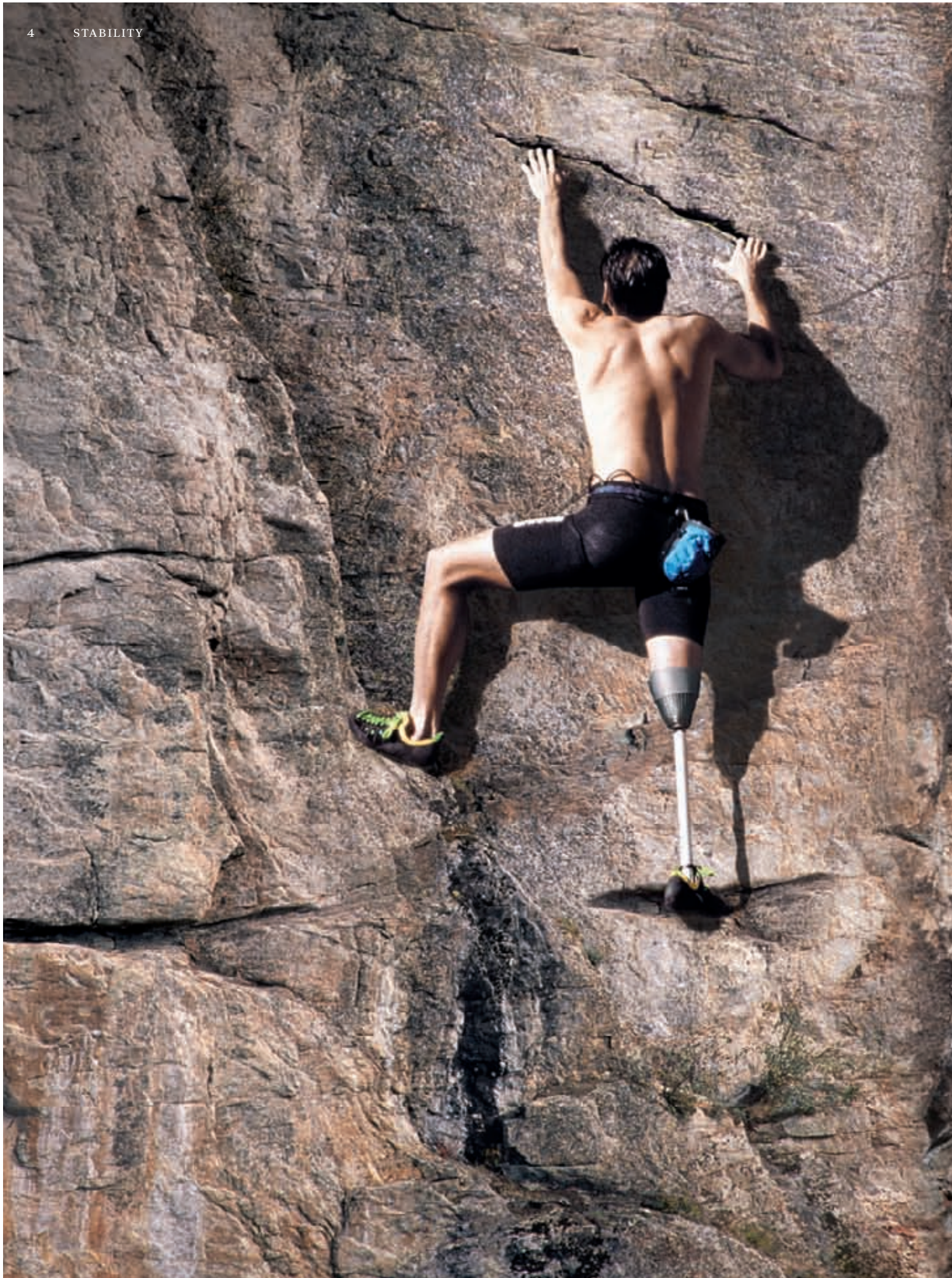
With technologies from GILDEMEISTER: We start 2012 from a position of strength. Our machines will continue to move the world for they lie at the start of the worldwide process chains. Our high innovative capacity and a growing international sales and service network ensure that more than 140,000 installed machines are in use throughout the world. The future is shaped by them, as new, real products are developed on them daily. Our range covers the “Machine Tools” segment with its core expertise of turning and milling, as well as ultrasonics / lasertec and electronics. “Industrial Services” offers automation and software solutions plus services for machine tools, while Energy Solutions offers intelligent energy concepts for a sustainable world. Technological knowhow and a global innovative capacity reinforce our position on the markets relevant for us. Through this we create real value for our customers.

On the following pages we would like to give you an insight into the world of GILDEMEISTER.

FINANCIAL YEAR 2011:  
THE CORNERSTONES OF OUR SUCCESS.

Stability  
Innovations  
Precision  
Globalisation  
Experience  
Sustainability







Mobilise  
new strengths.  
With stability  
from GILDEMEISTER.



**MEDICAL TECHNOLOGY:**

Numerous products that have to be extremely durable, such as stainless steel screws for bones, are machined on turning machines from GILDEMEISTER.

# Stability. Turning technology from GILDEMEISTER.

There are areas of life, where it's not just a matter of millimetres but of micro millimetres and for good reason. Such as in medicine.

Whether an endoprosthesis for knee and hip joints, joint sockets, bone screws or medical implants made of high-tech ceramics – thanks to highly-efficient production solutions, GILDEMEISTER is the pacesetter on the way to the future.



AUTOMATIC TURNING  
SPRINT 42 | 8 *linear*

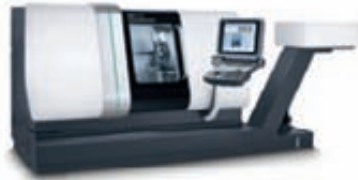


01 NEF

→ cnc universal turning machines

UNIVERSAL TURNING

NEF  
5<sup>th</sup> generation



NEF 400 / 600

02 CTX

→ cnc universal turning machines

UNIVERSAL TURNING

CTX  
universal turning



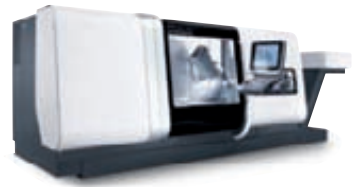
CTX alpha 300 / 500

CTX TC

→ Turn & Mill  
complete machining

TURN & MILL

Turn & Mill



CTX beta 1250 TC\*  
CTX beta 1250 TC *linear*

CTX  
universal turning



CTX beta 500 / 800 / 1250  
CTX beta 500 / 800 / 1250 *linear*

Turn & Mill



CTX gamma 1250\* / 2000\* / 3000 TC\*  
CTX gamma 1250\* / 2000\* TC *linear*

CTX  
universal turning



CTX gamma 1250 / 2000 / 3000  
CTX gamma 1250 / 2000 *linear*

→ CTX 4-AXIS

Production turning centres

4-axis  
production turning



CTX beta 800 / 1250 4A

\* 4A: with additional lower revolver

## NTX / NT

→ Turn & Mill  
complete machining

TURN & MILL

Turn & Mill



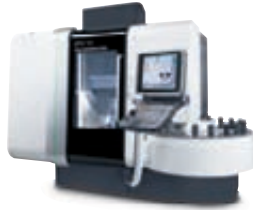
NTX 1000

## 03 CTV

→ Vertical turning machines

PRODUCTION TURNING

vertical



CTV 160 / 250  
CTV 160 / 250 *linear*

vertical



CTV 400 *linear*

## 04 MSL

→ Multislid-cnc-  
automatic turning

AUTOMATIC TURNING

6-axis



MSL 42 | 6  
MSL 60 | 6

7-axis



MSL 42 | 7  
MSL 42 | 7 C  
MSL 60 | 7

Turn & Mill  
xxl. machines



NT 6600



## 05 SPRINT

→ cnc automatic turning

## AUTOMATIC TURNING

automatic turning  
*linear*SPRINT 20 | 8 *linear*

## 06 GMC / GM

→ Multi-spindle turning centres

## AUTOMATIC TURNING

Multi-spindle  
turning centresGM 16 | 6  
GM 20 | 6  
GM 35 | 6automatic turning  
*linear*SPRINT 42 | 8 *linear*  
SPRINT 42 | 10 *linear*cnc multi-spindle  
turning centres

GMC 20 / 35

automatic turning  
*linear*SPRINT 50 *linear*  
SPRINT 65 *linear*cnc multi-spindle  
turning centresGMC 20 / 25 / 35 / 42 ISM *linear*

# All round intelligent solutions. Turning technology from GILDEMEISTER.

From universal turning to production turning and CNC bar turning – with six product lines DMG offers a complete product range.

In combination with innovative control technology and 3D simulation, our customers can achieve significant increases in productivity.

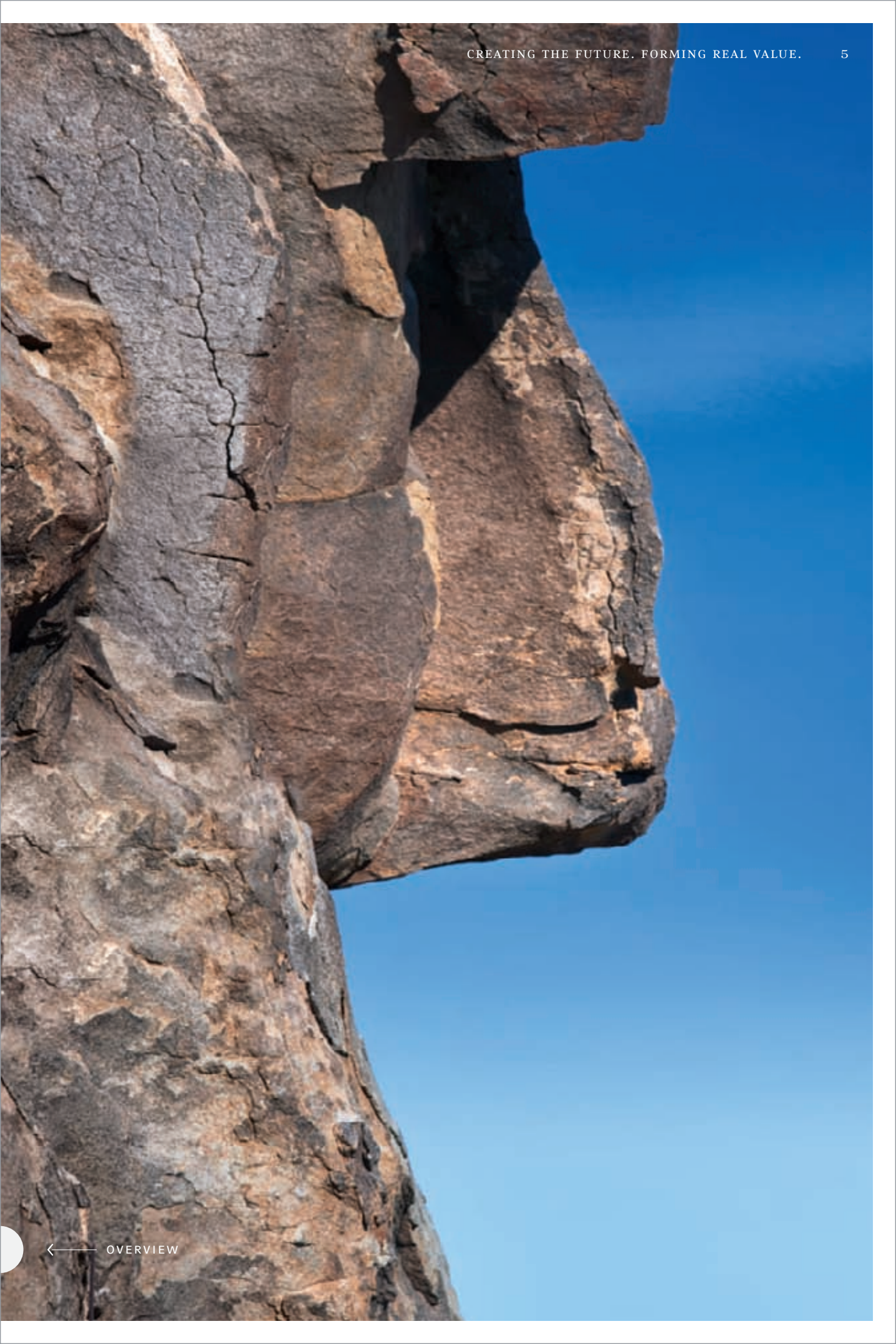
UNIVERSAL TURNING: NEF / CTX

TURN & MILL: CTX TC / NTX / NT

PRODUCTION TURNING: CTX 4-AXIS / CTV

AUTOMATIC TURNING: MSL / SPRINT / GMC / GM









Performing at top  
efficiency daily.  
With innovations  
from GILDEMEISTER.



**AEROSPACE:**

Worldwide, performance-enhancing components, such as compressor wheels for aircraft turbines, are produced on milling machines from GILDEMEISTER.

# Innovations. Milling technology from GILDEMEISTER.

Special challenges lend us wings. Could there be any higher challenges than those of the aerospace industry? Keeping an overview, seeing the whole picture and above all thinking ahead of the rest – only in this way will safe, economic solutions form tomorrow's world. Solutions, like the ones that we develop year after year for the aerospace industry.



UNIVERSAL MILLING FOR  
5-AXIS / 5-SIDED MACHINING  
DMU 80 FD duoBLOCK®



## 01 DMU

→ CNC universal milling machines



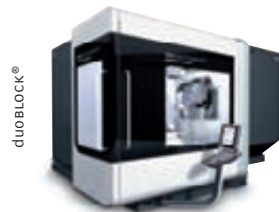
3- / 5-axis

DMU 50 / 70

## 02 DMU P / FD

→ CNC universal milling machines for 5-axis / 5-sided machining

→ duoBLOCK®



duoBLOCK®

DMU 60 / 80 / 100 / 125 / 160 P/FD duoBLOCK®

## 03 DMF

→ Travelling column machines



2<sup>nd</sup> generation

DMF 180 / 260 | 7 / 260 / 360 | 11

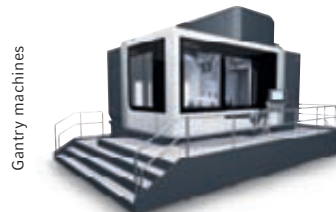
→ monoBLOCK®



monoBLOCK®

DMU 40 / 60 / 80 / 100 monoBLOCK®

→ Gantry



Gantry machines

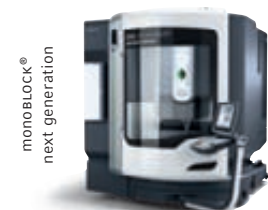
DMU 210 P/FD



2<sup>nd</sup> generation  
*linear*

DMF 180 / 260 | 7 / 260 / 360 | 11 / 500 *linear*

→ XXL



monoBLOCK®  
next generation

DMU 65 / 85 / 105 / 125 monoBLOCK®



Gantry machines XXL

DMU 340 P/FD  
DMU 600 P/FD

→ eVolution

CNC universal milling machines for 5-axis / 5-sided machining



*linear*  
next generation

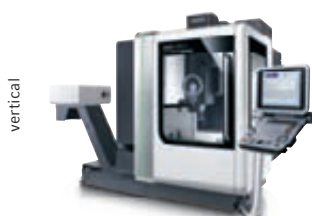
DMU 40 / 60 / 80 / 100 eVo  
DMU 40 / 60 / 80 / 100 eVo *linear*

04 DMC V  
→ Vertical machining centres

05 DMC H  
→ Horizontal machining centres

NHX  
→ Horizontal machining centres

→ duoBLOCK®



DMC 635 / 835 / 1035 V



DMC 55 / 65 / 75 H duoBLOCK®

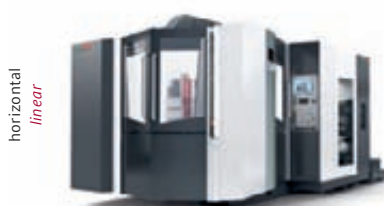


NHX 4000



DMC 80 / 100 / 125 / 160 H  
duoBLOCK®

→ H *linear*



DMC 60 H *linear* duoBLOCK®

## 06 DMC U / FD

→ CNC-universal milling machines  
for 5-axis / 5-sided machining with  
pallet changer

→ duoBLOCK®

duoBLOCK®



DMC 60 / 80 / 100 / 125 / 160  
U/FD duoBLOCK®

## 07 HSC

→ High-speed-cutting  
precision centres

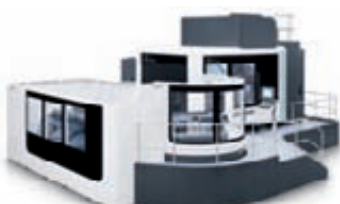
HSC *linear*



HSC 20 *linear*

→ Gantry

Gantry machines



DMC 210 U/FD

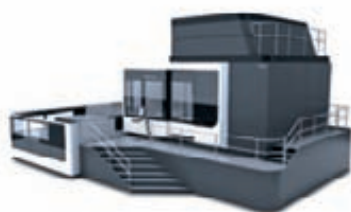
HSC *linear*



HSC 55 / 75 / 105 *linear*

→ XXL

Gantry machines XXL



DMC 340 U/FD  
DMC 600 U

# Seriously better high-tech solutions. Milling technology from GILDEMEISTER.

User-friendly technology, trendsetting product strategies and industry-focused solutions – DMG stands worldwide for milling technology at the highest level. With our seven product lines we offer our customers high-tech solutions in every field of application: from CNC universal milling to 5-axis simultaneous machining combined with turning technology (FD).

CNC UNIVERSAL MILLING MACHINES: DMU

UNIVERSAL MILLING MACHINES FOR

5-SIDED / 5-AXIS MACHINING:

DMU EVOLUTION / DMU P / DMU FD

TRAVELLING COLUMN MACHINES: DMF

VERTICAL MACHINING CENTRES: DMC V

HORIZONTAL MACHINING CENTRES: DMC H / NHX

CNC-UNIVERSAL MILLING MACHINES FOR 5-SIDED / 5-AXIS

MACHINING WITH PALLET CHANGER: DMC U / DMC FD

HIGH-SPEED-CUTTING PRECISION CENTRES: HSC









Focussing on  
the essential.  
With precision  
from GILDEMEISTER.



**LIFESTYLE:**

Leading international producers manufacture stylish product elements, such as moulded parts for camera casings, on lasertec machines from GILDEMEISTER.

# Precision.

ULTRASONIC /  
LASERTEC  
technology from  
GILDEMEISTER.

Delicate cavities with the finest engravings and etchings demand optimum results with maximum depth of sharpness – possible down to the smallest detail with precise machining techniques from GILDEMEISTER. This continually opens up new perspectives for our customers.



SERVES FORWARD-LOOKING INDUSTRIES –  
LASERTEC 20



## 01 ULTRASONIC

→ ULTRASONIC technology:  
also for monOBLOCK®, duoBLOCK®  
and eVolution-series available

5-axis



ULTRASONIC 10

5-axis *linear*



ULTRASONIC 20 / 55 *linear*

5-axis *linear*



ULTRASONIC 65 / 85  
monOBLOCK®

5-axis *linear*



ULTRASONIC 60 / 80  
eVo *linear*

## 02 LASERTEC

→ LASERTEC 20 – LASERTEC 210

PRECISION TOOL



LASERTEC 20  
LASERTEC 40  
LASERTEC 50

FINE CUTTING



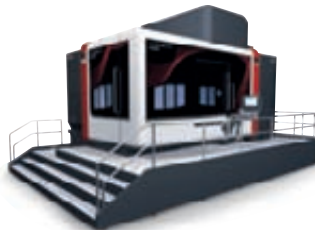
LASERTEC 20  
LASERTEC 50

POWER DRILL



LASERTEC 50  
LASERTEC 80  
LASERTEC 130

SHAPE



LASERTEC 40  
LASERTEC 50  
LASERTEC 65  
LASERTEC 210

Solutions with perfect  
depth of sharpness.

ULTRASONIC / LASERTEC  
technology  
from GILDEMEISTER.

At home in the markets of the future:  
With the ULTRASONIC / LASERTEC product lines  
DMG serves forward-looking industries  
and sets new trends. The results of this are  
innovative machining concepts for a broad  
range of materials with demanding workpiece  
characteristics.

ULTRASONIC

LASERTEC









Developing  
new markets.  
With the  
globalisation  
strategy from  
**GILDEMEISTER.**



**AUTOMOTIVE INDUSTRY:**

Around the globe basic parts,  
such as cross members for vehicles,  
are produced on Ecoline machines  
from **GILDEMEISTER.**

# Globalisation.

## ECOLINE technology from GILDEMEISTER.

Anywhere in the world where industry is picking up speed, is where we are. As in Russia, in Ulyanovsk, an industrial centre on the Volga, where companies from the automotive and aerospace sectors are established. GILDEMEISTER is investing here in a state-of-the-art assembly plant, which will produce ECOLINE machines in the future.



VERTICAL MACHINING  
DMC 1035 V ECOLINE

01 CTX ECOLINE  
→ cnc universal turning machines

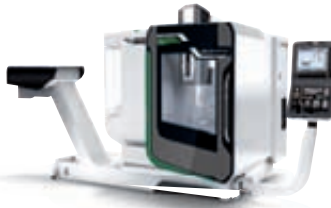
UNIVERSAL TURNING



CTX 310 ECOLINE

02 DMU ECOLINE  
→ cnc universal milling machines

UNIVERSAL MILLING



DMU 50 ECOLINE

→ CONTROLS



DMG SLIMline®-PANEL WITH  
SIEMENS 840D SOLUTIONLINE



CTX 510 ECOLINE



DMG SLIMline®-PANEL WITH  
HEIDENHAIN 620

03 DMC V ECOLINE  
→ Vertical machining centres

VERTICAL MACHINING



DMC 635 V ECOLINE

04 MILLTAP  
→ Vertical machining centres



MILLTAP 700



MAPPS IV FROM  
MORI SEIKI

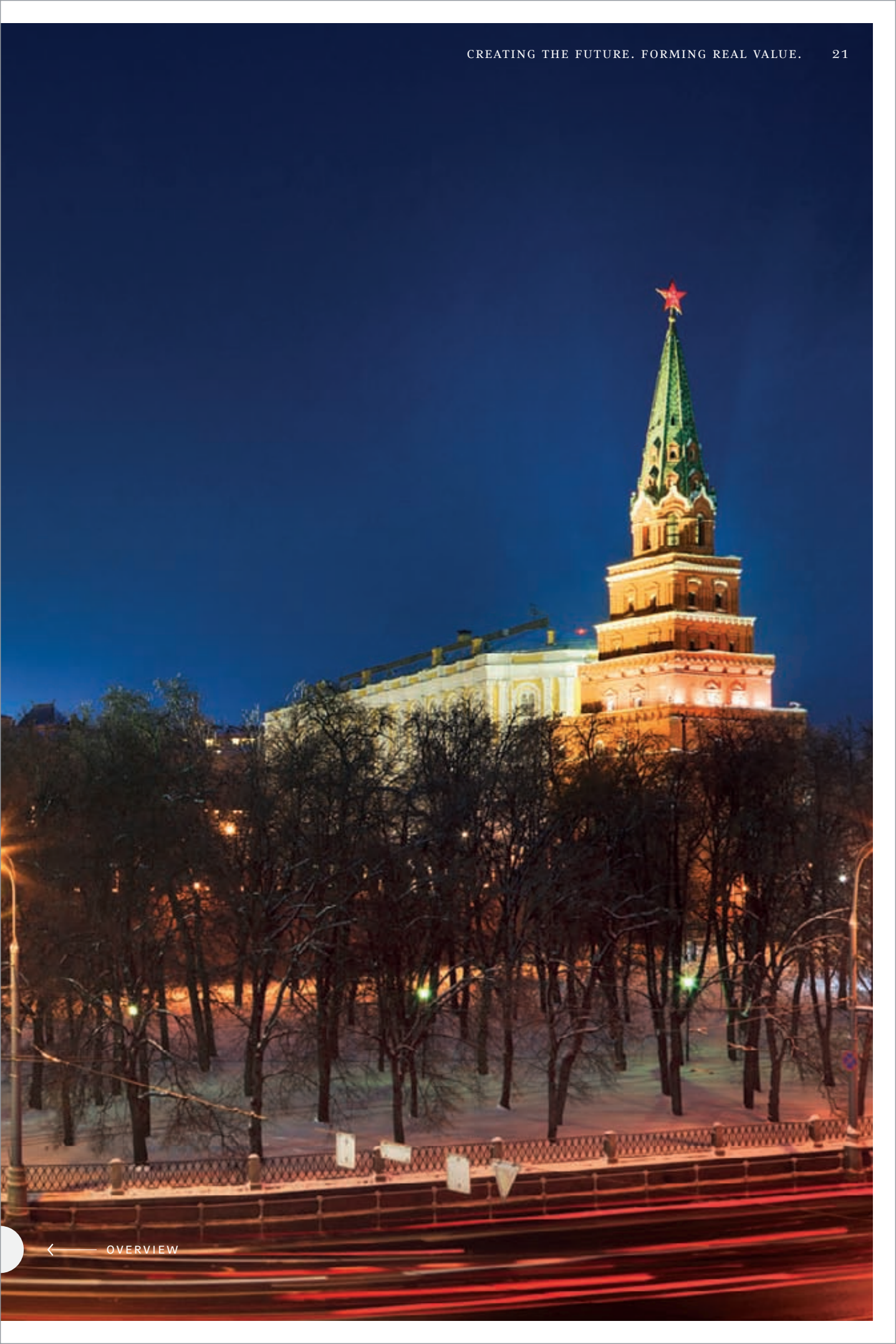


DMC 1035 V ECOLINE

# Solutions for entry level of the highest quality. ECOLINE technology from GILDEMEISTER.

Top quality with the most up-to-date 3D control technology and impressive performance. With the ECOLINE we make it possible for our customers to gain optimum access to turning and milling operations at attractive entry level prices. The sound construction style and well-engineered components ensure reliable, high productivity for all world markets.

CTX ECOLINE  
DMU ECOLINE  
DMC V ECOLINE  
MILLTAP  
CONTROLS







Become  
unbeatably good.  
With the  
experience of  
GILDEMEISTER.

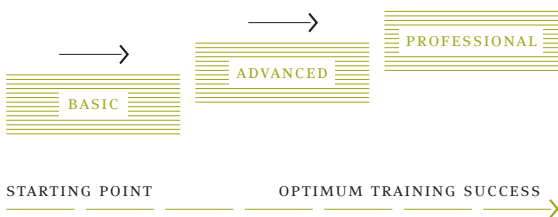


**PRODUCTION PROCESS:**

With modern services and innovative software solutions, such as 1:1 simulation, GILDEMEISTER optimises its customers' and partners' efficiency decisively.

# Experience. LifeCycle Services from GILDEMEISTER.

Modern technologies only become fully effective with expert use. Whether individual CNC training for the perfect programming and use of machines, the latest training equipment for training facilities or realising complex vocational training products – the DMG Training Academy teams are the perfect partners for maximum safety, productivity and efficiency.





01 TRAINING

02 DMG

03 SERVICE

04 SPARE PARTS

POWERTOOLS



TRAINING



DMG PROCESS CHAIN



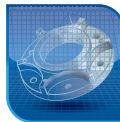
INSPEKTION+



SPARE PARTS



TRAINING PLUS



DMG VIRTUAL MACHINE



GEOMETRY CHECK



MAINTENANCE KITS



TEACHWARE



DMG PROGRAMMER  
3D TURNING



LASER MEASUREMENT



EQUIPMENT



TRAINING PROJECTS



DMG PROGRAMMING /  
TRAINING SOFTWARE



MAINTENANCE OF  
CONTROLS



SERVICE TRAINING



DMG MESSENGER



3D SWIVEL  
CYCLE CHECK



DMG SERVICE AGENT



SPINDLE SERVICE



DMG NETSERVICE

## 05 SETTING DEVICES

## 06 AUTOMATION

## 07 BAR LOADERS



UNO 115 ECOLINE



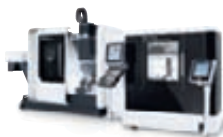
TOOLHANDLING  
WH 3 / WH 3 U  
WH 10 TOP  
WH 10 / WH 25



S LOADER ECOLINE



VIO 210 MV II IT /  
VIO 210 MV III



PALLET HANDLING  
PH 3 | 100  
PH 50 | 20  
PH 150 | 8  
PH 200 | 20  
PH 200 | 12



S LOADER



VIO MV III /  
VIO *linear* MV IV



TOOLHANDLING  
TH 90 / 120 / 150



VIO *linear*  
TOOLSHRINK



AIRMATRIX



VIO TOOL DYNAMIC

08 RETROFITTING      09 RECONDITIONING      10 USED MACHINES



3D QUICKSET®



COMPONENTS



DEMONSTRATION  
MACHINES



ENERGYSAVE



MACHINES



USED MACHINES



POWER PROBE



TRADE-IN, FINANCING



TOOL BREAK  
MONITORING

# Solutions for a long and successful machine life. LifeCycle Services from GILDEMEISTER.

DMG LifeCycle Products – are the perfect solution over the entire life cycle of our machines tools. DMG offers the right product and optimum service for every requirement. With the original DMG services for DMG machine tools, our customers are on the right path today and in the future.

TRAINING

DMG POWERTOOLS

SERVICE

SPARE PARTS

SETTING DEVICES

AUTOMATION

BAR LOADERS

RETROFITTING

RECONDITIONING

USED MACHINES









Giving the green  
light for new ideas.  
With sustainability  
from GILDEMEISTER.



GENERATE



STORE



UTILISE

**RENEWABLE POWER SOURCES:**

Sustainable concepts for generating, storing and utilising renewable energy are increasingly enforced in all areas of life, also in motorsport.

# Sustainability. Energy Solutions from GILDEMEISTER.

How can solar power be used round the clock? The answer is provided by technological breakthroughs such as solar fuelling stations from GILDEMEISTER. They form part of the complete concepts for us and for our customers for generating, storing and using renewable energies. In production, in mobility, in daily life. 24 hours a day. 7 days a week.



MÜNCH RACING – WORLD CHAMPION  
IN THE FIM E-POWER AND TTXGP  
ELECTRIC MOTORCYCLE RACING SERIES



01 GENERATE  
→ Solar energy

GENERATE  
→ Wind energy

02 STORE  
→ Vanadium Redox Flow big battery

TRACKING SYSTEM

SMALL WIND FARMS

BIG BATTERY



SUNCARRIER 22



WINDCARRIER



CELLCUBE FB 10-100



SUNCARRIER 70 / 120



CELLCUBE FB 200-400



SUNCARRIER 220 / 260 / 300

→ FIXED ELEVATED  
PHOTOVOLTAIC SYSTEMS



SUNCARRIER FIXED

AVAILABLE FROM JUNE 2012:  
CELLCUBE FB 10-40 / FB 10-70 / FB 10-130  
CELLCUBE FB 20-40 / FB 20-70 / FB 20-100 / FB 20-130  
CELLCUBE FB 30-40 / FB 30-70 / FB 30-100 / FB 30-130

# 03 UTILISE

→ System solutions

## SYSTEM SOLUTIONS



e-mobilitysolutions



industrialsolutions



off-gridsolutions



telesolutions

# 04 COMPONENTS

## COMPONENTS



ROTOR HUB  
COMPONENTS FOR WIND ENERGY



PITCH-STIFFENING ELEMENT  
COMPONENTS FOR WIND ENERGY

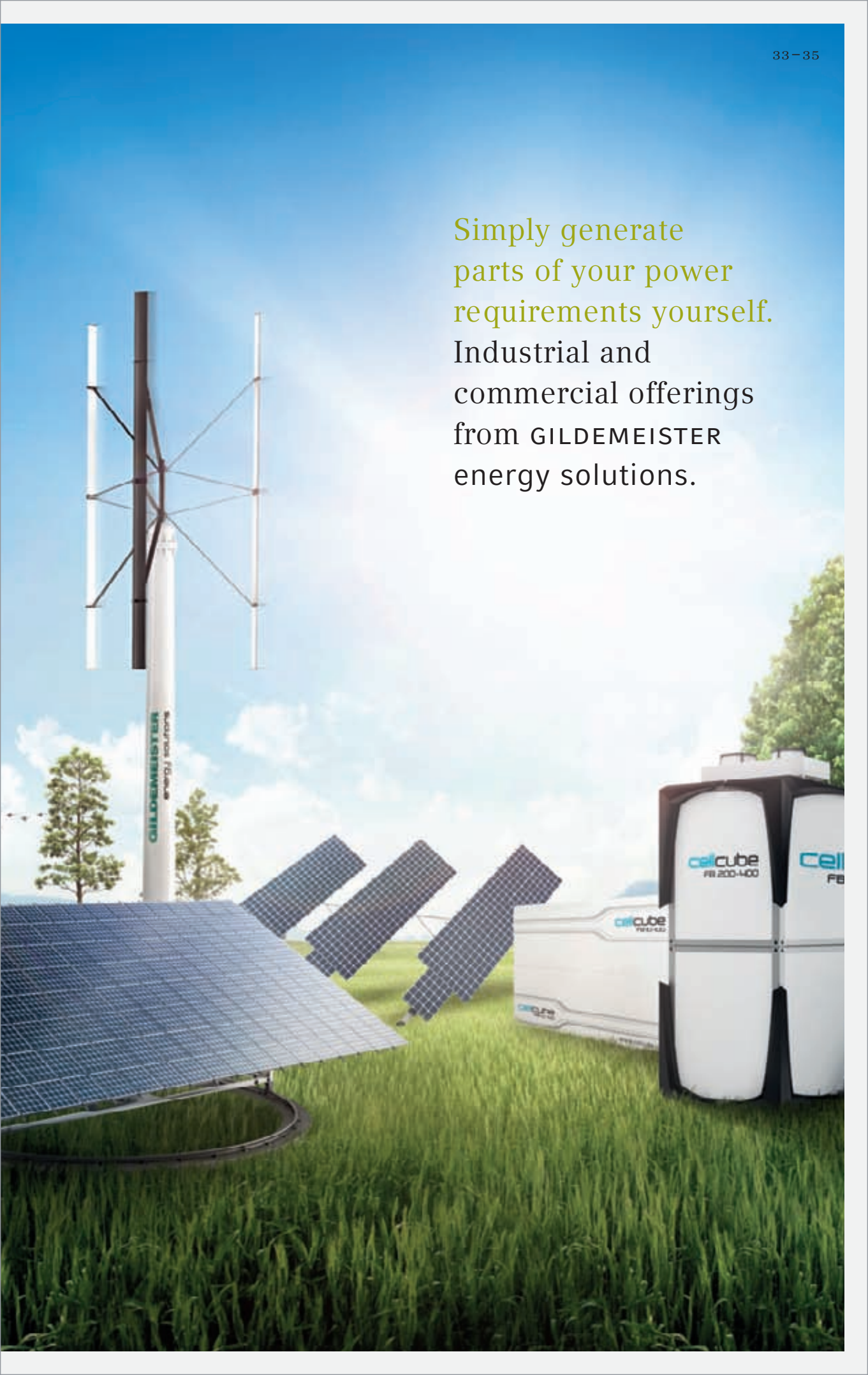


DOWNFORCE ENCLOSURE  
COMPONENTS FOR SOLAR ENERGY



POLE HEAD  
COMPONENTS FOR SOLAR ENERGY

Simply generate  
parts of your power  
requirements yourself.  
Industrial and  
commercial offerings  
from GILDEMEISTER  
energy solutions.

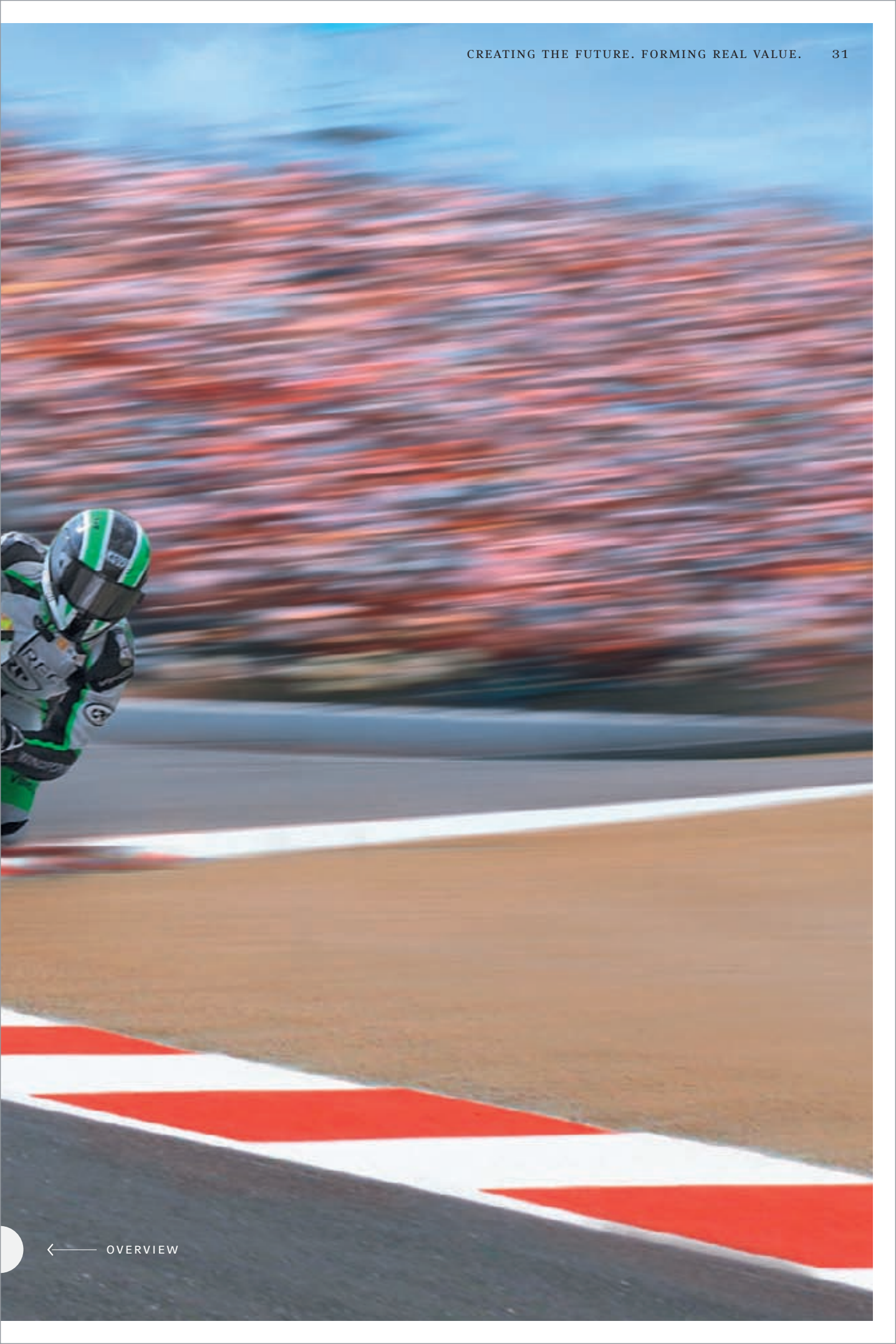


# Ground-breaking solutions for industry and consumers. Energy Solutions from GILDEMEISTER.

Generating cleaner electricity economically and making it available for innovative applications: With the SunCarrier and the long-lasting and low maintenance CellCube big battery, GILDEMEISTER offers ground-breaking solutions. These allow our customers to implement integrated systems in the future market of renewable energies today – like the e-fuelling station, for example.

TRACKING SYSTEM  
SMALL WIND FARMS  
BIG BATTERY  
SYSTEM SOLUTIONS  
COMPONENTS







If your mobile phone is equipped with a QR code reader, just take a photo of this code and you will be taken straight to the online version of the annual report.

GILDEMEISTER Aktiengesellschaft  
Gildemeisterstraße 60  
D-33689 Bielefeld  
Local Court HRB 7144  
Phone: +49 (0) 52 05 / 74-3001  
Fax: +49 (0) 52 05 / 74-3081  
Internet: [www.gildemeister.com](http://www.gildemeister.com)  
E-Mail: [info@gildemeister.com](mailto:info@gildemeister.com)