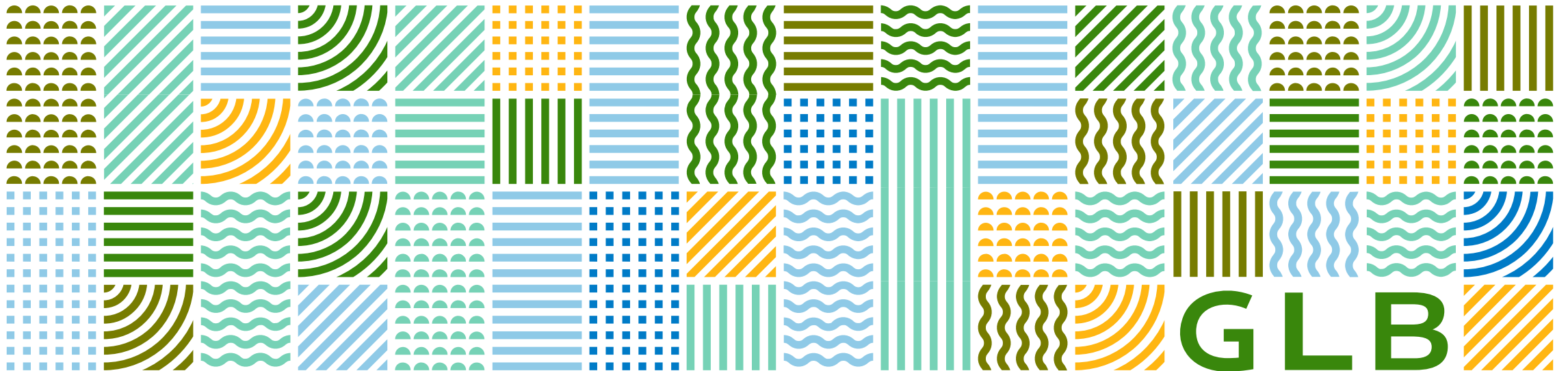




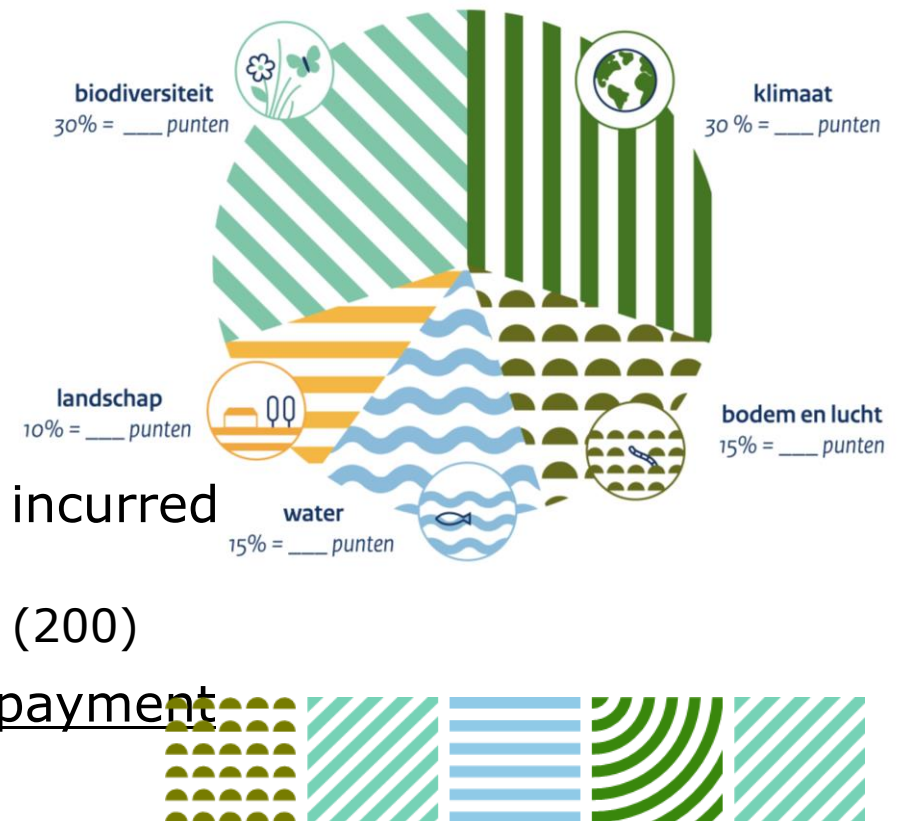
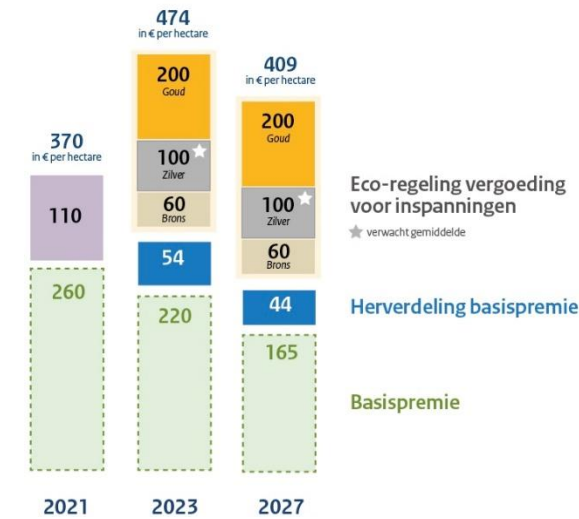
Rijksdienst voor Ondernemend
Nederland

The NL Eco-Scheme



The eco-scheme: how does it work?

- A **rating system**, developed by the government, should be supported by farmers and other stakeholders. Broadly accessible ('the platoon').
- Farmers choose from the menu (22 eco activities in 2023).
- Eco-activities contribute to several of the five objectives:
 - **Climate, Soil & Air, Water, Landscape, Biodiversity**
- Activity-objective impact-matrix (points per hectare)
 - "Simulation tool" aids decision making
 - Some activities can be combined on a parcel
- Point threshold
- Payment calculated based on income foregone and costs incurred ("value" per ha for each eco-activity)
 - Three payment levels: bronze (60 per ha), silver (100), gold (200)
- In order to join, farmer must reach point threshold AND payment threshold



Eco-activities 2023:

Resting crop/crop rotation	Strip cultivation
Nitrogen fixing crop/protein crop	Bufferstrip with herbs*
Multi-annual crops	Green fallow
Permanent pasture	Undersow catchcrop
Grassland with herbs	Organic pesticide/
Grass/clover	Extended grazing*
Paludiculture	Hedges
Early harvesting of root crops*	Woody element
Green cover	Organic farming (SKAL)
Fiber crop	



2024:

Precision pesticide application

Precision fertilizer application

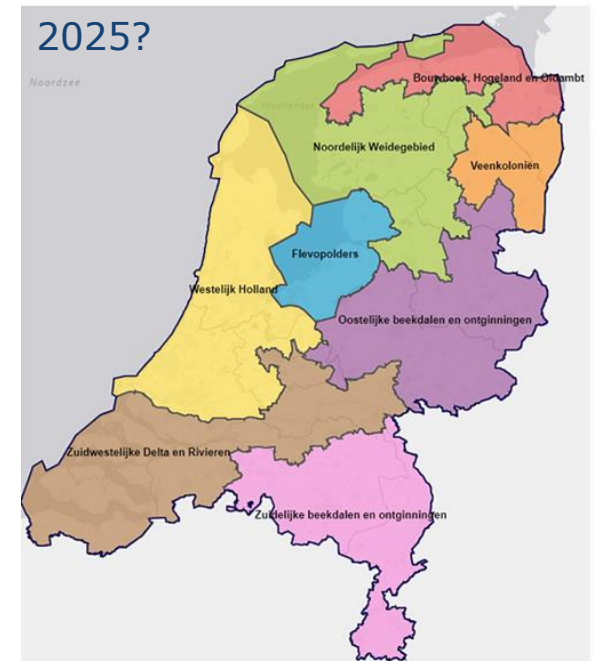
Fertigation

2025?



The eco-scheme: how does it work?

- **Regional differentiation** in point threshold and value allow us to address regional challenges and incorporate differences in costs faced by farmers.
- Working with the rating system should be easy and **flexible** for farmers. There should be room for experimentation.
- Registering of participation end of year t-1, final application end of year t
 - (in 2023 and 2024 registering May of year t)
- Farmers cannot add extra activities throughout the year, but are free to remove activities from their application
 - The registration must be kept up-to-date
- Organic farms '**green by definition**' (receive gold award)
- AECM & eco: working to further smoothen combination



Participation CAP 1st pillar June 2023

First estimates of eco scheme adoption and farmer participation

Notice that the flexibility in the scheme allows the farmers to downsize their application until November!

These numbers are not final.

	Basic payment		Eco Scheme	
	Farms	Area (ha)	Farms	Area (ha)
# registered	44,412	1,836,723	35,563	1,381,829
# small farms (<60 ha)	34,293	779,504	25,994	563,898
# large farms (>60 ha)	10,119	1,057,219	9,569	817,931
Total NL	55,000	2,200,000		
	83%		63%	agricultural land

Most popular: permanent pasture, woody elements, cover crops, grassland with herbs

Least popular: paludiculture, strip cultivation, fiber crops, multi-annual crops