



Launch of the ELM Futurium:

Sharing good practices and connecting implementers

25 September 2024

AGENDA

01. Introduction

By Koen Nomden and Céline Jambon

02. Aims of the Futurium

03. Demo of the platform

04. Your thoughts

Give your opinion on the features of the Futurium

01. Introduction

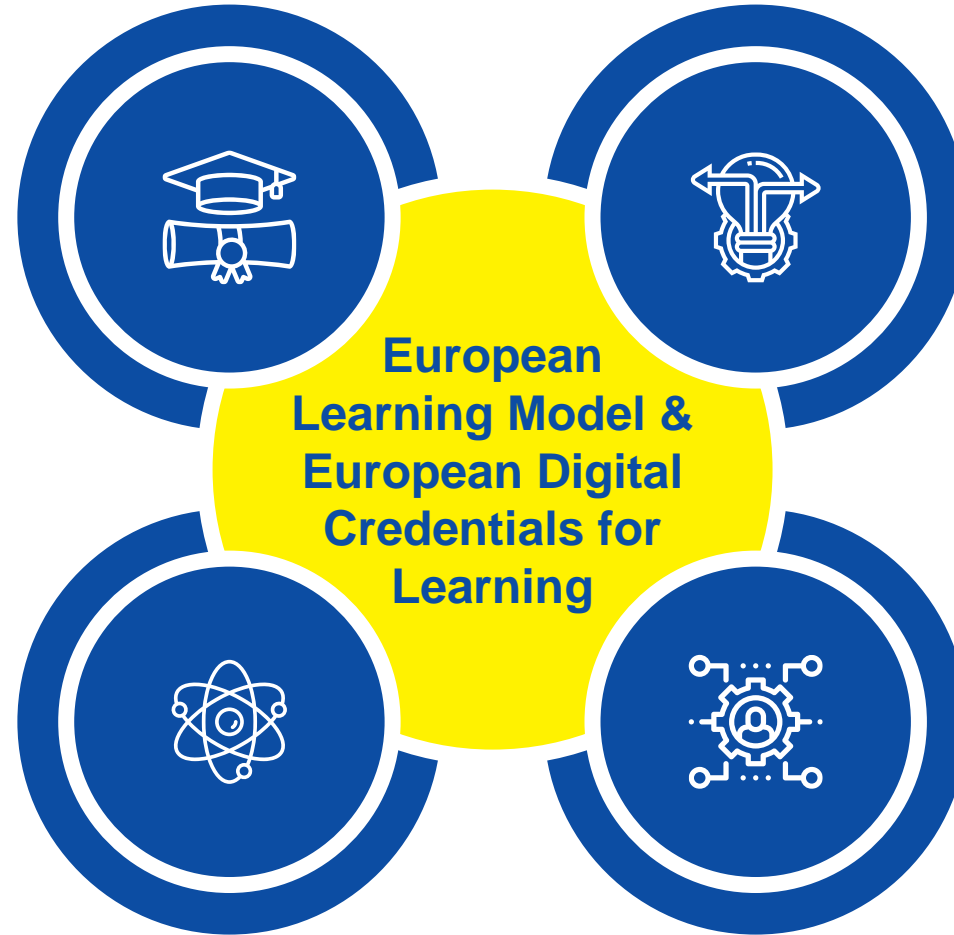
Central to the EU's Policy Agenda

European Pillar of Social Rights

Micro-credentials and Individual Learning Accounts Recommendations

European Strategy for Data

Labour and skills shortages in the EU: an action plan



European Skills Agenda

Europass Decision

EQF Recommendation

DEAP – European Education Area by 2025

European Degree

Skills and Talent Mobility Package

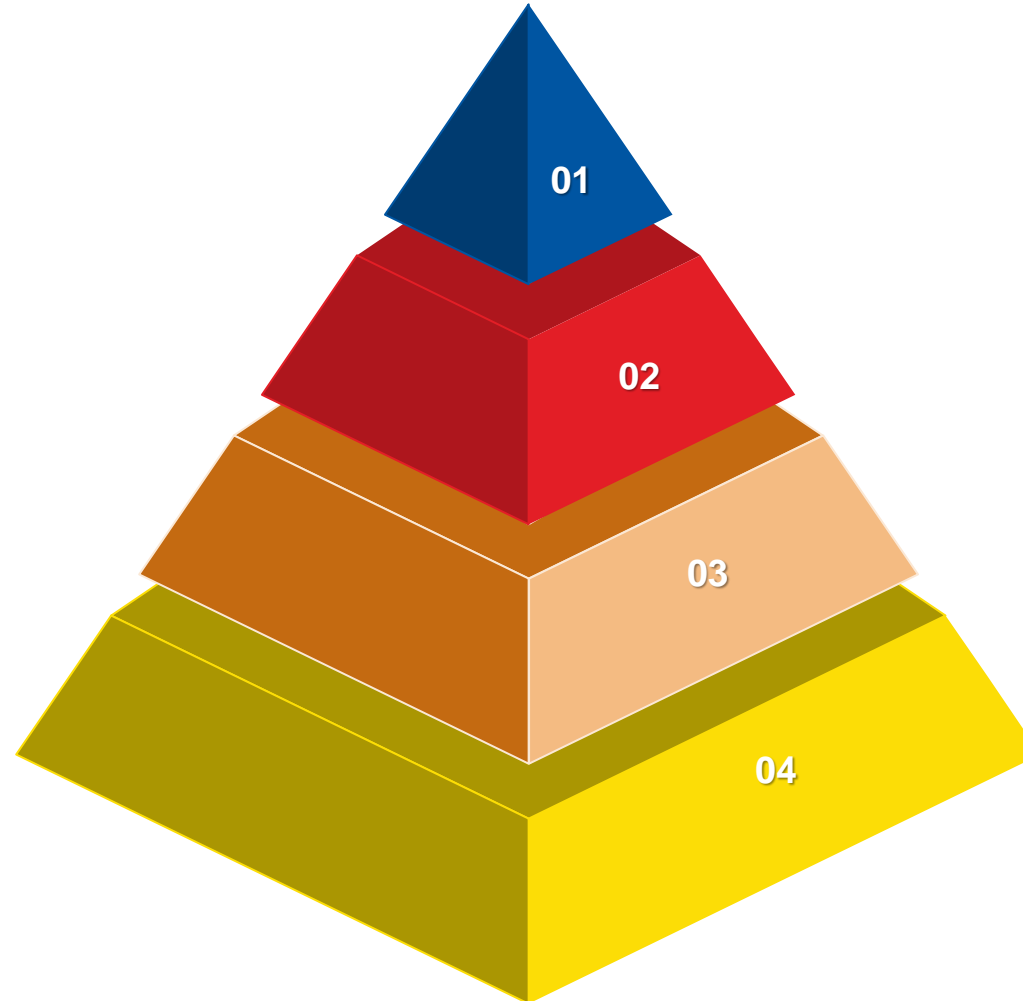
European Learning Model

01 European Information Model

Definitions and Standards in EQF Recommendation, Diploma Supplement, Europass Decision, etc. supplemented by glossaries for additional terms

03 Application Profiles

Specific sets of rules for publishing learning opportunities, qualifications, accreditations and credentials in Europass



02 European Learning Model

A Linked Open Data publication of concepts to be used in educational and employment use cases throughout Europe

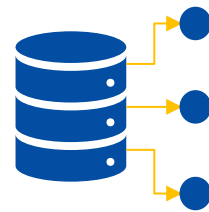
04 Extensions

National, Regional or Sectoral extensions of the data model & application profiles to deal with specific use cases

ELM application: LOQ and QDR



Member States

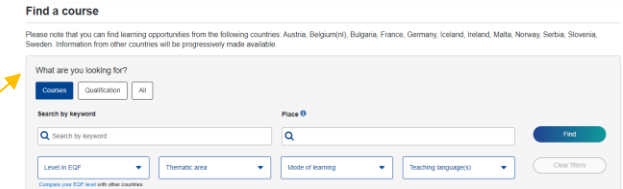


Qualifications
Learning Opportunities
Accreditation

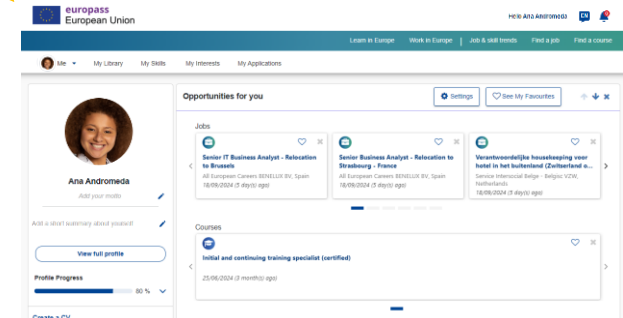
QDR



Europass course search page



E-portfolio



ELM application: EDC

Start with web-based free tools



BUILD

credential
templates in
the Online
Builder



ISSUE

Seal and
award
credentials to
owners



STORE

credentials
securely in
one wallet



VERIFY

credential's
authenticity
and validity



SHARE

credential
information
with one click

Adopt custom-built
implementation with
open-source code

Why an ELM Futurium Group?

European Digital Credentials for Learning



14 institutions
actively issuing
EDCs



50+ organisations
testing or exploring
the use of EDCs
across **25 countries**



Ranging from VET
providers, Universities,
Training providers, and
national implementations

Why an ELM Futurium Group?

Qualifications

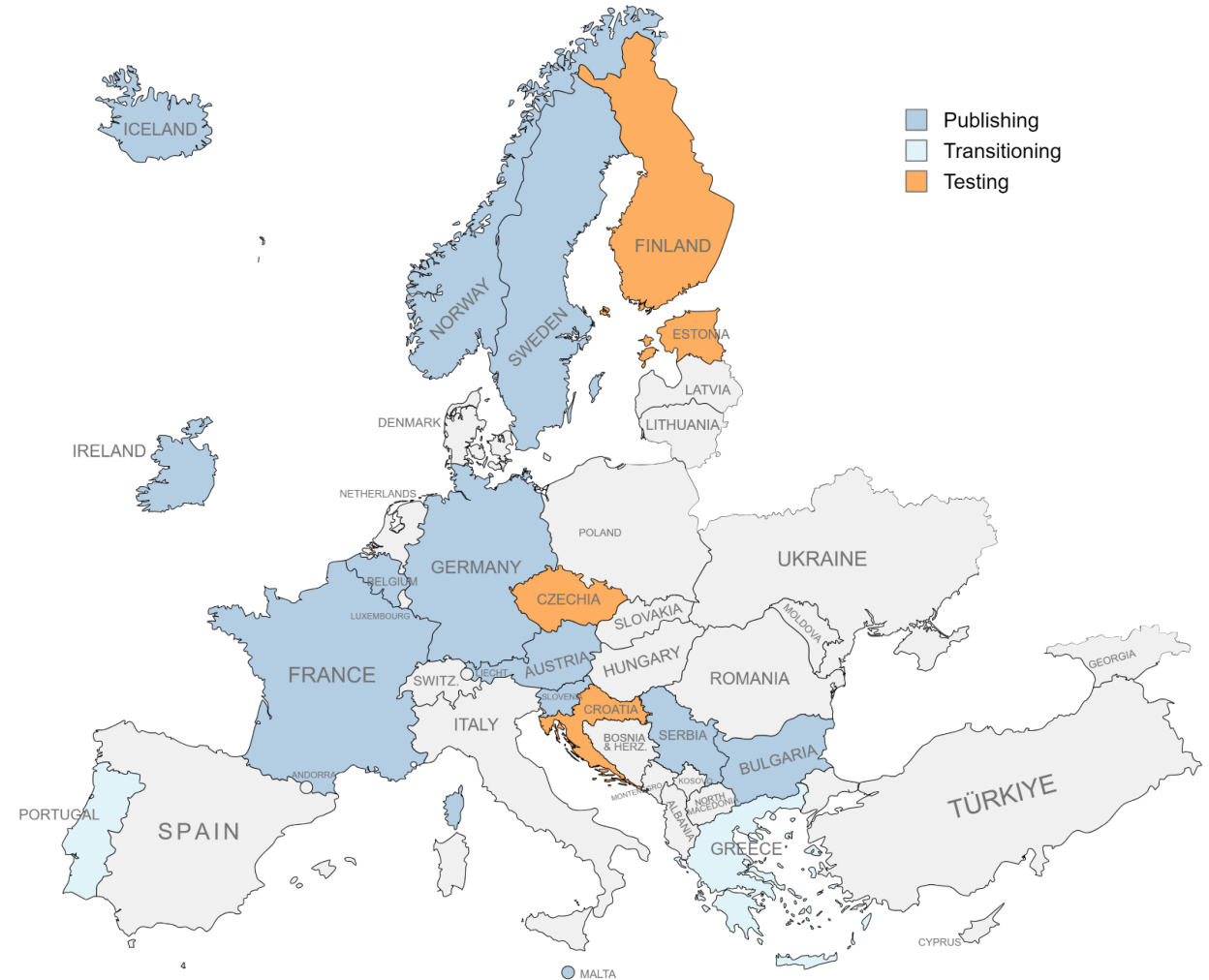
- 12 countries are publishing data on qualifications (Austria, Belgium(NL), Czechia, Estonia, France, Germany, Ireland, Malta, The Netherlands, Serbia, Slovenia, Sweden)
- 2 countries are in the testing phase in QDR (Croatia and Romania)
- 9 countries are transitioning into the ELMv3 (Belgium(FR), Greece, Hungary, Iceland, Latvia, Lithuania, Poland, Portugal, Türkiye)



Why an ELM Futurium Group?

Learning Opportunities

- 12 countries are publishing data on learning opportunities (Austria, Belgium(NL), Bulgaria, France, Germany, Iceland, Ireland, Malta, Norway, Serbia, Slovenia, Sweden)
- 4 countries are in the testing phase in QDR (Croatia, Czechia, Estonia, Finland)
- 2 countries are transitioning into the ELMv3 (Greece and Portugal)

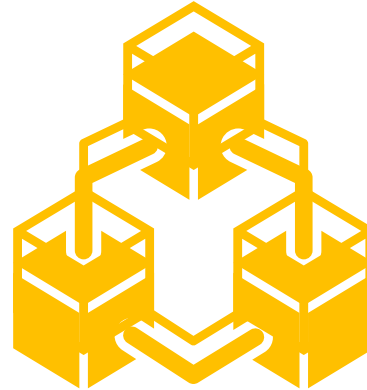


Why an ELM Futurium Group?

Other usage of ELM



Aligned with and interoperable with other frameworks (ESCO, ISCED-F) and with the ELMO data model



Used in the Europass platform & in other Commission services and initiatives (e.g. European Blockchain Service Infrastructure, Single Digital Gateway)



Free & open source

Possible future alignments:
EU Digital Identity Wallet,
European Student Card
Initiative

02. Aims of Futurium

ELM Futurium

- ✓ **Connect** implementers, facilitate exchanges on existing solutions for implementation in different education and training domains;
- ✓ Keep stakeholders **updated** with the latest developments of the European Learning Model, European Digital Credentials for Learning and Qualification Dataset Register;
- ✓ Serve as a channel for providing **feedback** on the EDC infrastructure and the ELM, as well as to express interest for specific improvements and new features.

ELM Futurium

Main Group for the European Learning Model

Focused on implementers' standard application and overarching strategies, centred around the data model itself.

Sub-Group for the EDC

Dedicated to entities issuing or planning to issue digital credentials.

Sub-Group for the Developer Corner

A space for those implementing the open-source version of the infrastructure, encouraging technical collaboration

Sub-Group for the QDR

A forum for Member States publishing learning opportunities, qualifications or accreditation datasets in the QDR to share insights and best practices (*restricted access*).

Connect, learn from each other's experiences, and collectively advance interoperability of learning and the digital labour market in Europe.

03. Demo

DEMO



Futurium

European Learning Model – Peer Exchange

Group actions ▾

[Home](#) | [Events](#) | [Good Practices](#) | [Forum](#) | [Feedback](#)

You have been logged in.

Close this message ✕

[View](#) | [Content](#) | [Members](#) | [Settings](#)Dear member, you can change frequency of email notification in your [profile](#)

Close this message ✕

Welcome to the European Learning Model Peer Exchange community.

Here we encourage you to:

- Share your best practices with other implementers in the [Best Practice](#) sharing.
- Submit your [feedback](#) on the ELM (whether proposed changes, adaptations in translations, or other requests).
- Ask your questions using the [Forum](#).
- Visit the [European Digital Credentials for Learning sub-group](#) to ask your EDC specific questions and share your experience
- Connect with other implementers of the open-source version of the European Digital Credentials for Learning in our [Developer Corner](#) sub-group.
- Stay up to date on upcoming events

Please note that all posting is moderated by the ELM Support team. We will treat your posts on a daily basis, but you may expect some delay prior to publication.

To stay informed about all the latest activity, make sure to turn on your notifications

The aim of this group is to serve you as a community. Should you have further suggestions on what you would like to have available, do not hesitate to contact us at EMPL-ELM-SUPPORT@ec.europa.eu

[Qualification Dataset Register](#)[European Digital Credentials for Learning](#)[Developer Corner](#)


Latest publications

Developer Corner

FEEDBACK

Share your feedback

What could we improve to make integrating EDCs easier for you? Whether it is documentation, tools, or services you feel are missing, your feedback is...


 Luisa Cabral
11 September 2024 updated last hour

Developer Corner

GOOD PRACTICES

Show off your solution

Have you recently integrated EDC into your system or developed a product that issues EDCs? Showcase your implementation here! We would love to see...


 Luisa Cabral
11 September 2024 updated last hour

Developer Corner

FORUM

Ask questions and share knowledge

Looking for guidance on signature protocols, API endpoints, or how to properly format your requests? Maybe you're developing your own EDC-compatible...

 Luisa Cabral
11 September 2024 updated last hour

European Learning Model – Peer Exchange

GOOD PRACTICES

Share your best practices

A higher education institution is making the transition to issue digital credentials for its degrees. The institution aims to ensure that these...

 Luisa Cabral
29 August 2024 - updated 1 day ago

European Digital Credentials for Learning

FORUM

Use this forum to ask your questions

The ELM support team can advise implementers, but its resources are limited. For example, while the ELM support team can advise you on how to install...

Most popular publications

European Digital Credentials for Learning

Practice Exchange

20 August 2024 - updated 2 hours ago

2 comments

European Digital Credentials for Learning

Wish List

21 August 2024

European Learning Model – Peer Exchange

Clarify your ELM related questions

27 August 2024 - updated 2 hours ago

Events

EVENT

25
SEP

2024

Launch of the European Learning Model Futurium Group

In response to requests for a community for peer exchange, the European Commission is launching Futurium Group for the European Learning Model

Community data controller

EMPL.B.2

Contact community manager(s)

Developer Corner

Part of European Learning Model – Peer Exchange

Home | Forum | Good Practices | Feedback

Please login to join this community (Developer Corner).

Close this message ✕

Welcome to the Developer Corner.

Here we encourage you to:

- Share your integration scenarios
- Connect with other implementers in your country and abroad
- Share tips and tricks related to your context of implementation
- Ask for advice in the forum for questions that go beyond the reach of our Support Team
- Submit your improvement requests and highlight the developments you would like to see in the European Digital Credential for Learning Infrastructure

Please note that all posting is moderated by the ELM Support team. We will treat your posts on a daily basis, but you may expect some delay prior to publication.

To stay informed about all the latest activity, make sure to turn on your notifications

The aim of this group is to serve you as a community. Should you have further suggestions on what you would like to have available, do not hesitate to contact us at EMPL-ELM-SUPPORT@ec.europa.eu

Latest publications

FEEDBACK

Share your feedback

What could we improve to make integrating EDCs easier for you? Whether it is documentation, tools, or services you feel are missing, your feedback is...



Luisa Cabral

11 September 2024 - updated 2 days ago

Most popular publications

Show off your solution

11 September 2024 - updated 2 days ago

Ask questions and share knowledge

11 September 2024 - updated 2 days ago

Qualification Dataset Register

Part of European Learning Model – Peer Exchange

Group actions ▾

[Home](#) | [Mapping to the ELM](#) | [Use of the QDR](#) | [Data Quality Good Practices](#) | [Forum](#) | [Repository of Documentation](#)[View](#) | [Content](#) | [Members](#) | [Settings](#)

Dear member, you can change frequency of email notification in your profile

Close this message ✕

Welcome to the Qualification Dataset Register Peer Exchange community.

In this space, we encourage you to share best practices concerning the collection and publication of your Learning Opportunities, Qualification and Accreditation datasets, including the mapping of your national databases to the Learning Opportunities and Qualifications (LOQ) format of the European Learning Model.

We propose to use the following spaces for exchange:

- Mapping to the European Learning Model
- Use of the Qualification Dataset Register
- Data Quality Best Practices
- Miscellaneous
- Repository of documentation

The aim of the community is to provide you with a space to exchange with other entities publishing to the QDR. Should you have further suggestions on how the community could be improved, do not hesitate to reach out to us.

Please note that your posts will only be visible to members of the Qualifications Dataset Register Group, accessible only by invitation.

To stay informed about all the latest activity, make sure to turn on your notifications

For specific technical assistance in publishing your dataset, you are invited to contact the ELM support team directly at EMPL-ELM-SUPPORT@ec.europa.eu

04. Your thoughts

Q&A

Please ask questions via Slido.com



#ELM_Futurium

<https://app.sli.do/event/e8qUn6XUUH5zqKdDgparoY>



Thank you

Contact the ELM Support Team at
EMPL-ELM-SUPPORT@ec.europa.eu