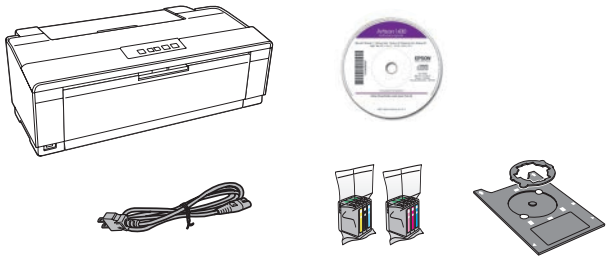


# Artisan® 1430 Start Here

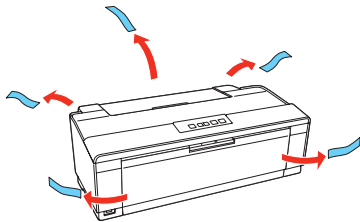
Read these instructions before using your product.

## 1 Unpack

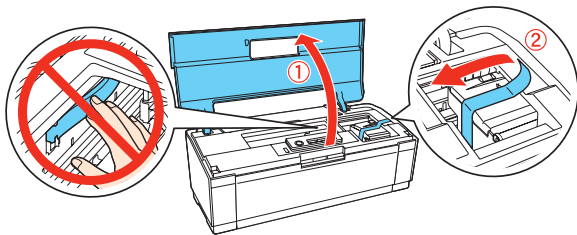


**Caution:** Do not open ink cartridge packages until you are ready to install the ink. Cartridges are vacuum packed to maintain reliability.

- 1 Remove all protective materials.

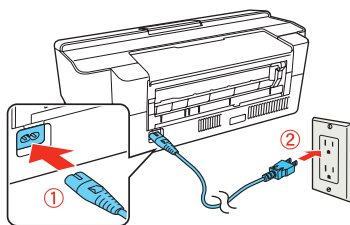


- 2 Open the printer cover and remove any tape inside.



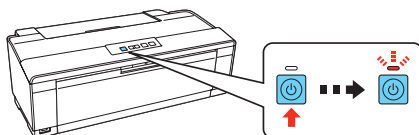
## 2 Turn on

- 1 Connect the power cord to the back of the printer and to an electrical outlet.



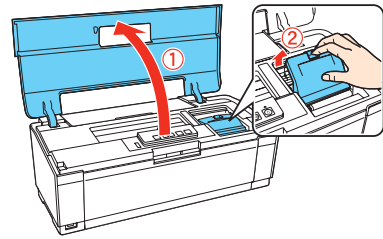
**Caution:** Do not connect to your computer yet.

- 2 Press the power button.

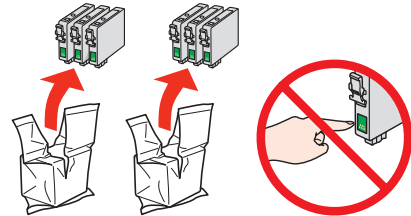


## 3 Install ink cartridges

- 1 Open the printer cover, then open the ink cartridge cover.



- 2 Unpack the ink cartridges.

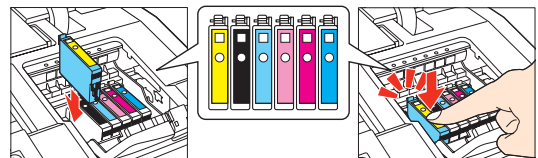


- 3 Remove only the yellow tape from each cartridge.

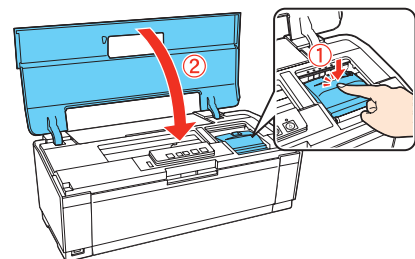


**Caution:** Don't remove any other seals or the cartridges may leak.

- 4 Insert the cartridges in the holder for each color. Press each cartridge down until it clicks.



- 5 Close the ink cartridge cover, then close the printer cover.



- 6 Press the  $\Delta$  ink button to begin priming the ink. This takes about 3 minutes. Do not turn off the printer, load paper, or open any covers until the process is complete.

**Note:** Your printer ships with full cartridges and part of the ink from the first cartridges is used for priming the printer. Replacement cartridges will print more pages.

**Caution:** Don't turn off the printer while it is priming or you'll waste ink.



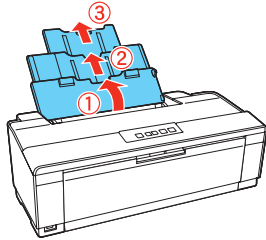
\*412857800\*

**EPSON®**  
EXCEED YOUR VISION

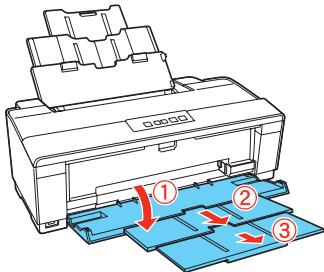
## 4 Load paper

You can load various size plain and photo papers in the sheet feeder. For instructions on loading envelopes or a CD or DVD, see the online *User's Guide*.

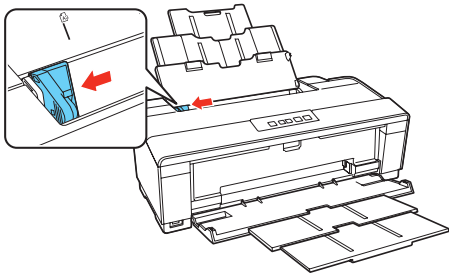
- 1 Open the paper support and pull up the extensions.



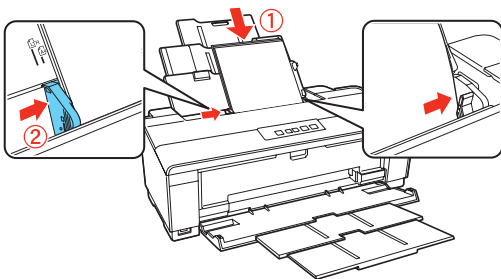
- 2 Open the output tray and pull out the extensions.



- 3 Slide the edge guide to the left.



- 4 Load paper printable side up (usually the whiter, brighter, or glossy side), against the right edge of the sheet feeder, and behind the tab. Then squeeze the left edge guide and slide it against the left edge of the paper, but not too tightly.



**Note:** Don't load the paper sideways. Always load it short edge first.

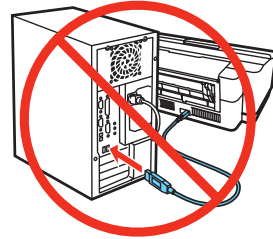


## 5 Install software

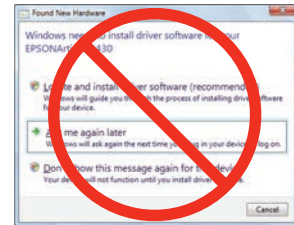
**Note:** If your computer does not have a CD/DVD drive, you can download the software from the Epson website (see "Epson technical support" on the back of this sheet).

**Caution:** Be sure to close your other programs, including any screen savers and virus protection software, before beginning this software installation.

- 1 Make sure the printer is **NOT CONNECTED** to your computer.




**Windows:** If you see a Found New Hardware screen, click **Cancel** and disconnect the USB cable. You can't install your software that way.



- 2 Insert the product CD.

- 3 **Windows:** If you see the AutoPlay window, click **Run Setup.exe**. If you see the User Account Control screen, click **Yes** or **Continue**.

**OS X:** Double-click the  **Epson** icon.

- 4 Click **Install** (Windows) or **Continue** (OS X) and follow the instructions on your computer screen.



- 5 When you see the Select Your Connection screen, check the "Connection options" section on the back of this sheet for more information.

Choose your connection. Then click **Next** (Windows) or **Continue** (OS X) and follow the instructions on your computer screen.



# Connection options

## Wireless connection

You must install the software on every computer from which you want to print. The installer may prompt you to connect the printer to your computer with a USB cable temporarily. After the printer is connected to the network, you will be prompted to remove the cable. (USB cable not included.)

Make sure you know your network name (SSID) and network password:

- Network name \_\_\_\_\_
- Network password \_\_\_\_\_

If you don't have this information, contact the person who set up your network.


**Note:** If you connect to your network using Wi-Fi Protected Setup (WPS) on Windows, you do not need to know your SSID and network password.

## Direct USB connection

Make sure you have a USB cable.

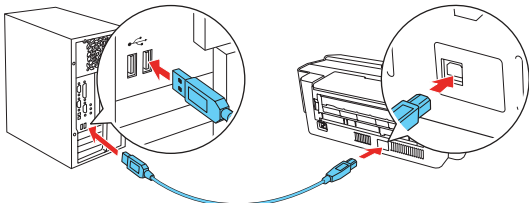
# Any problems?

## Network setup was unsuccessful.

- If you're connecting the printer via Wi-Fi Protected Setup (WPS), make sure you press and hold the **Wi-Fi** button on the printer within 2 minutes of pressing the WPS button on your router. Press and hold the **Wi-Fi** button on the printer for 3 seconds.
- Try connecting to the router or access point with your computer or another device to confirm that it is working correctly.
- Try resetting the router (turn it off and then on), then try to connect to it again.
- Press the  button to print a network status sheet. Verify that the network settings are correct and check the signal strength. If it's poor, try moving the printer closer to your router or access point. Avoid placing the printer next to a microwave oven, 2.4 GHz cordless phone, or large metal objects such as a filing cabinet.
- Make sure you select the right network name (SSID). If your router or access point doesn't broadcast its network name, manually enter the name. If your network has security enabled, make sure you enter your network password (WEP key or WPA passphrase) correctly. Passwords must be entered in the correct case.
- When using TCP/IP, make sure your network's DHCP option is enabled (your router manufacturer will be able to assist you with this setting).
- If you see a Firewall alert message, click **Unblock** or **Allow** to let setup continue.

## Setup is unable to find my printer after connecting it with a USB cable.

Make sure it is securely connected as shown:



## Printing problems

- Make sure the paper size selected in the printer software matches the size of paper you loaded.
- Printing stops when an ink cartridge is expended. If a cartridge is expended, you must replace it to continue printing.

## Paper feeding problems

If paper doesn't feed correctly, remove the paper and fan the sheets, then reload them. Don't load paper above the tabs on the edge guides.












## Print quality problems

- Make sure your paper is loaded printable side up (usually the whiter, brighter, or glossy side).
- For the best print quality, use Epson® papers and genuine Epson ink cartridges.
- Make sure the paper type selected in the printer software matches the paper you loaded. See the online *User's Guide* for more information.
- If you notice light or dark bands across your printouts or they are too faint, run a nozzle check to see if the print head needs cleaning. See the online *User's Guide* for more information.
- If you notice jagged vertical lines, you may need to align the print head. See the online *User's Guide* for more information.
- The ink cartridges may be low on ink. Check your cartridge levels and replace cartridges, if necessary. See the online *User's Guide* for more information.

## Error indicators

If you see one of the error indicators below, follow the steps here to proceed:

- On    ◦ Off     Flashing slowly     Flashing fast

	Paper is out, the CD/DVD tray is not inserted correctly (if printing on a CD or DVD), or multiple sheets have fed at the same time. Load paper or the CD/DVD tray correctly and press the  paper button.
	Paper is jammed in the printer, the output tray is closed, or the CD/DVD tray did not eject (if printing on a CD or DVD). Remove any jammed paper and make sure the output tray is open, then press the  paper button to resume printing. If printing on a CD or DVD, pull out the CD/DVD tray and press the  paper button.
	An ink cartridge is not installed, installed incorrectly, expended, or cannot be used with the printer. Make sure all ink cartridges are installed correctly and replace any expended or incompatible ink cartridges.
	An ink cartridge is nearly expended. You can continue to use it until it is expended.
	The print head is obstructed by jammed paper or another foreign object and cannot return to the home position. Turn the printer off. Open the printer cover and remove any paper or other obstructions from the paper path. Then turn the printer back on. If the error does not clear, contact Epson.
 Flashing alternately	The printer's ink pads are nearing or at the end of their service life. Contact Epson to replace the ink pads. If the ink pads are nearing the end of their service life, printing can be resumed by pressing the  paper button.
	A firmware update did not complete and the printer is in recovery mode. Try updating the firmware again or contact Epson.

# Any questions?

## On-screen help with your software

Select **Help** or **?** when you're using your software.

## User's Guide

Click the icon on your desktop or Apps screen (or in the **Applications/Epson Software/Guide** folder in OS X) to access the online *User's Guide*, software downloads, Epson Supplies Central®, and more (requires an Internet connection).

If you don't have a User's Guide icon, you can install it from the CD or go to the Epson website, as described below.

## Epson technical support

Visit [epson.com/support](http://epson.com/support) (U.S.) or [epson.ca/support](http://epson.ca/support) (Canada) where you can download drivers, view manuals, get FAQs, or e-mail Epson.

To speak with a support specialist, call:

**U.S.:** (562) 276-7282, 6 AM to 8 PM, Pacific Time, Monday through Friday, and 7 AM to 4 PM, Saturday.

**Canada:** (905) 709-2567, 6 AM to 8 PM, Pacific Time, Monday through Friday, and 7 AM to 4 PM, Saturday.

Days and hours of support are subject to change without notice. Toll or long distance charges may apply.

## Recycling

Epson offers a recycling program for end of life hardware and ink cartridges. Please go to [epson.com/recycle](http://epson.com/recycle) for information on how to return your products for proper disposal.

# Need paper and ink?

Try Epson premium papers with Claria® Ink for better than photo lab quality results. For the right supplies at the right time, you can purchase them at Epson Supplies Central at [epson.com/ink3](http://epson.com/ink3) (U.S. sales) or [epson.ca](http://epson.ca) (Canadian sales). You can also purchase supplies from an Epson Authorized reseller. To find the nearest one, call 800-GO-EPSON (800-463-7766).

DESIGNED *for*  
EXCELLENCE™

Epson printers, ink and specialty papers.

## Genuine Epson paper

Epson offers a wide variety of papers to meet your needs; visit Epson Supplies Central for more information.



### Premium Photo Paper Semi-gloss

Instant-drying, soft gloss paper for brilliant, fingerprint-resistant photos. Ideal for framing, albums, or sharing.







## Genuine Epson inks



Look for the numbers below to find your cartridges. It's as easy as remembering your number!



## Artisan 1430 ink cartridges

Color	High-capacity
 Black	79
 Cyan	79
 Magenta	79
 Yellow	79
 Light Magenta	79
 Light Cyan	79

## Epson Connect™



Get instant, wireless printing of photos and attachments right from smartphones and tablets. See [epson.com/connect](http://epson.com/connect) for details.

EPSON, Artisan, Claria, and Supplies Central are registered trademarks, Epson Connect is a trademark, and EPSON Exceed Your Vision is a registered logomark of Seiko Epson Corporation. Designed for Excellence is a trademark of Epson America, Inc.

OS X is a trademark of Apple Inc., registered in the U.S. and other countries.

General Notice: Other product names used herein are for identification purposes only and may be trademarks of their respective owners. Epson disclaims any and all rights in those marks.

This information is subject to change without notice.

© 2014 Epson America, Inc., 10/14

CPD-35556R2

Printed in XXXXXX