

# Total University Sector Staff

## LEADERS (2019)

## ALL STAFF BY GENDER

CURRENT PRESIDENTS/PROVOSTS



## GOVERNANCE AND MANAGEMENT STRUCTURES

Number who have achieved a minimum 40% representation of each gender on:

GOVERNING AUTHORITY/BODY  
(DECEMBER 2019)

5 OUT OF 7



ACADEMIC COUNCIL  
(DECEMBER 2019)

4 OUT OF 7



EXECUTIVE MANAGEMENT  
(DECEMBER 2019)

5 OUT OF 7



## STAFF BREAKDOWN BY GENDER

Staff by Category of Post  
(December 2019)

### ACADEMIC STAFF

45% / 55%  
CORE-FUNDED<sup>1</sup>

46% / 54%  
RESEARCH/SPECIALIST<sup>3</sup>

### PROFESSIONAL, MANAGEMENT AND SUPPORT STAFF<sup>2</sup>

64% / 36%  
CORE-FUNDED<sup>1</sup>

64% / 36%  
RESEARCH/SPECIALIST<sup>3</sup>

Staff by Discipline  
(December 2019)

### ACADEMIC CORE-FUNDED STAFF

54% / 46%  
AHSSBL

43% / 57%  
STEMM

48% / 52%  
OTHER<sup>4</sup>

### PROFESSIONAL, MANAGEMENT AND SUPPORT CORE-FUNDED STAFF

86% / 14%  
AHSSBL

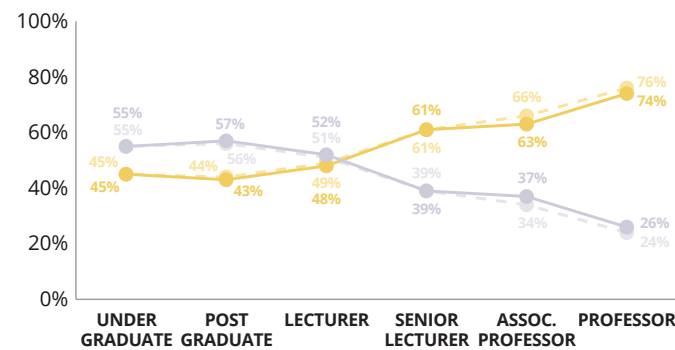
67% / 33%  
STEMM

63% / 37%  
OTHER<sup>4</sup>

## Academic Core-funded Staff by Grade\*

(2019 vs 3-year average, 2016-2018)

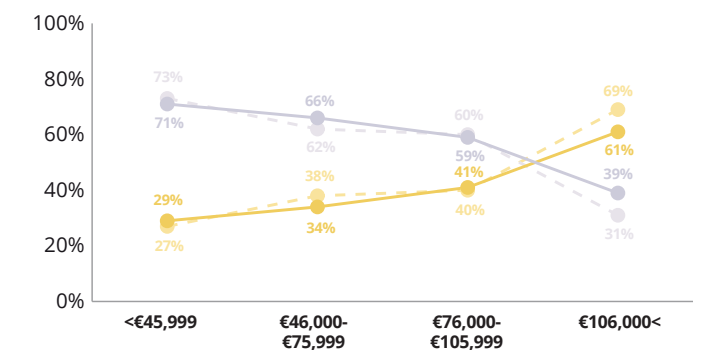
Female 2019 Male 2019 Female 3-yr avg Male 3-yr avg



## Professional, Management and Support Core-funded Staff by Pay Grade\*\*

(2019 vs 3-year average, 2016-2018)

Female 2019 Male 2019 Female 3-yr avg Male 3-yr avg



Academic Core-funded Staff by Contract Type  
(December 2019)

43% / 57%  
FULL-TIME PERMANENT

52% / 48%  
TEMPORARY/CONTRACT

62% / 38%  
PART-TIME PERMANENT

71% / 29%  
TEMPORARY/CONTRACT

50% / 50%  
HOURLY PAID

Professional, Management and Support Core-funded Staff by Contract Type  
(December 2019)

60% / 40%  
FULL-TIME PERMANENT

66% / 34%  
TEMPORARY/CONTRACT

89% / 11%  
PART-TIME PERMANENT

81% / 19%  
TEMPORARY/CONTRACT

0% / 0%  
HOURLY PAID

Data presented here is comprised of data from DCU, MU, NUIG, TCD, UCC, UCD and UL.

<sup>1</sup> Posts funded from the core grant allocated to the universities, institutes of technology and other colleges by the HEA is voted by the Oireachtas under the OME C4 sub-head.

<sup>2</sup> This refers to administration/support staff.

<sup>3</sup> Non-core grant funded research and specialist posts. These may include posts funded from both Exchequer and Non-Exchequer resources.

<sup>4</sup> 'Other' includes any core-funded posts which are not assigned to 'AHSSBL' or 'STEMM' faculties.

\* Student data presented here is comprised of data from DCU, MU, NUIG, UCC, UCD and UL.

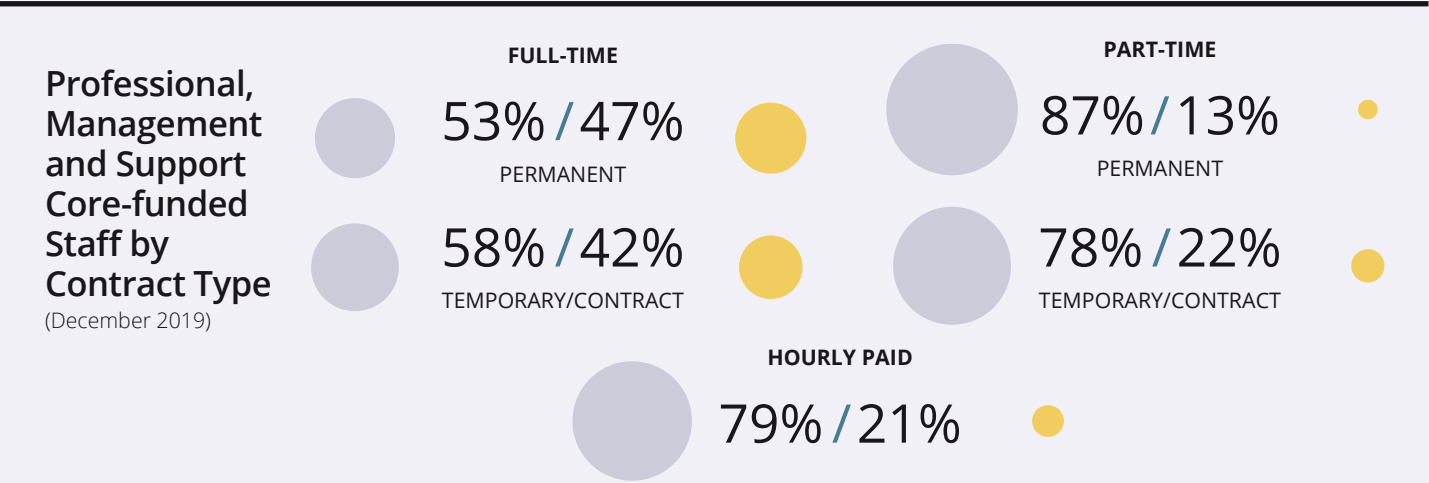
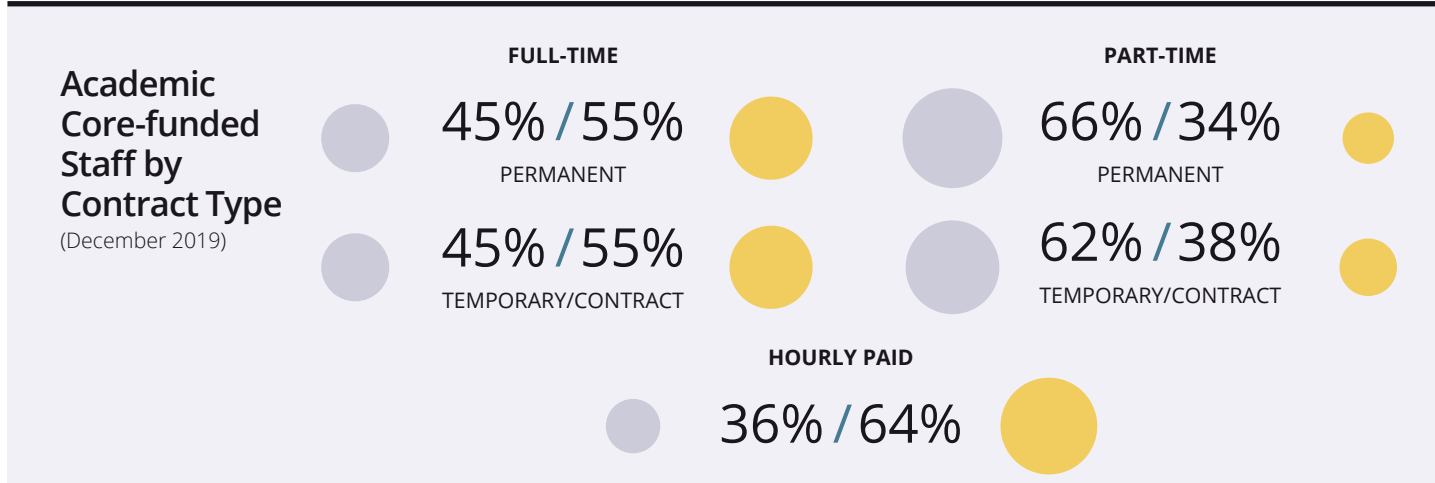
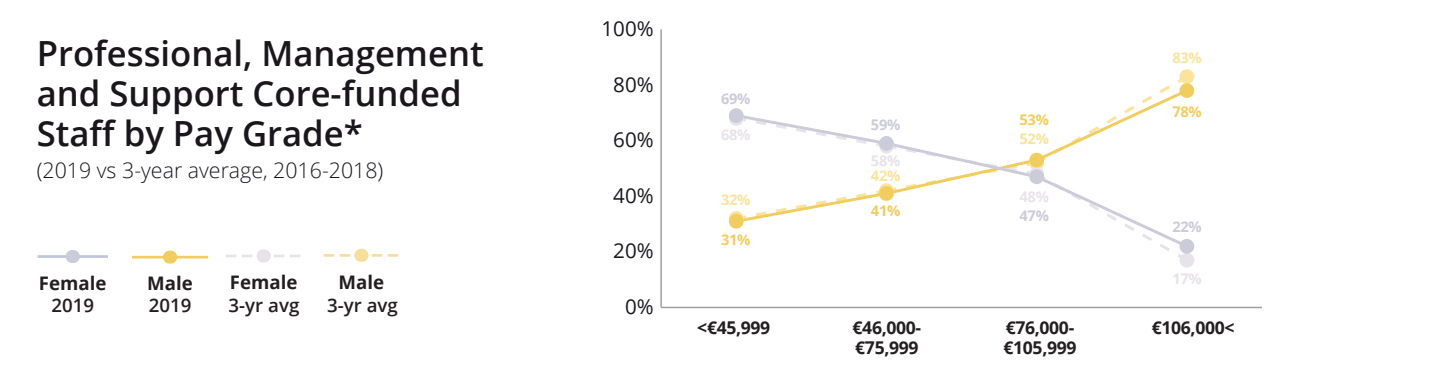
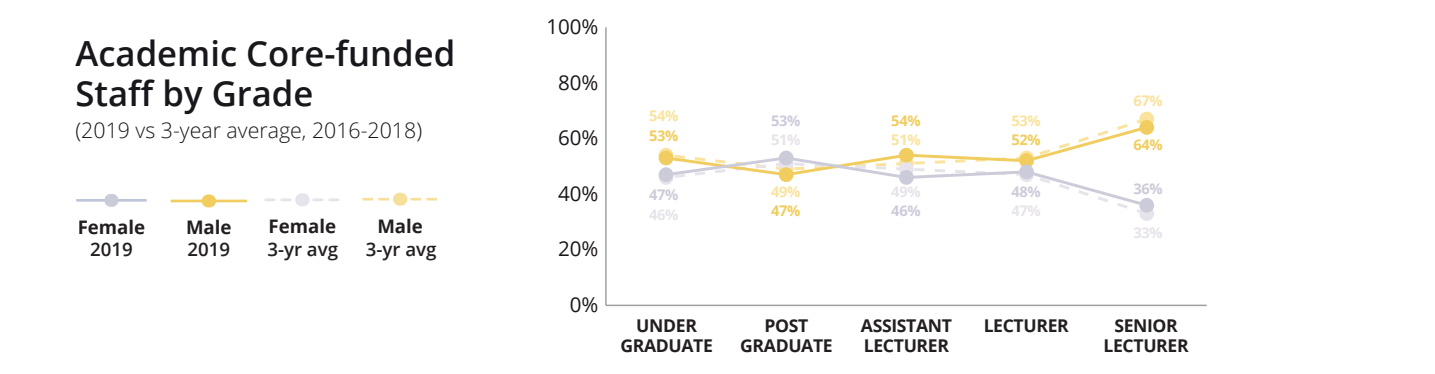
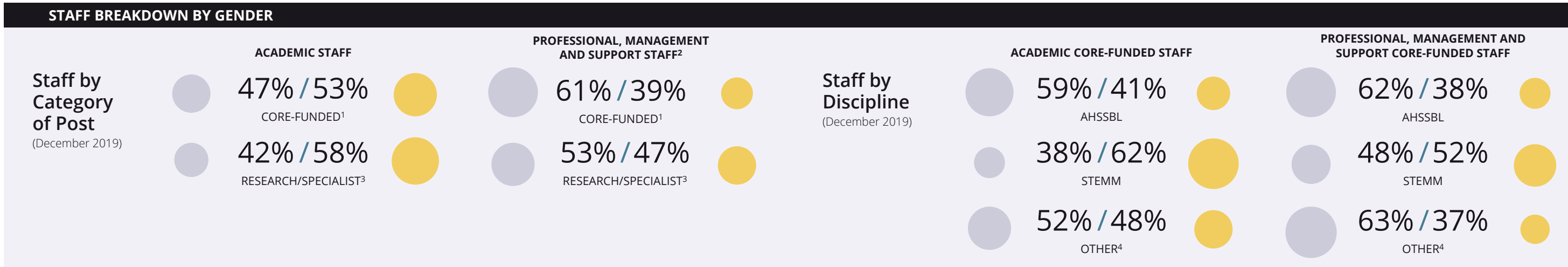
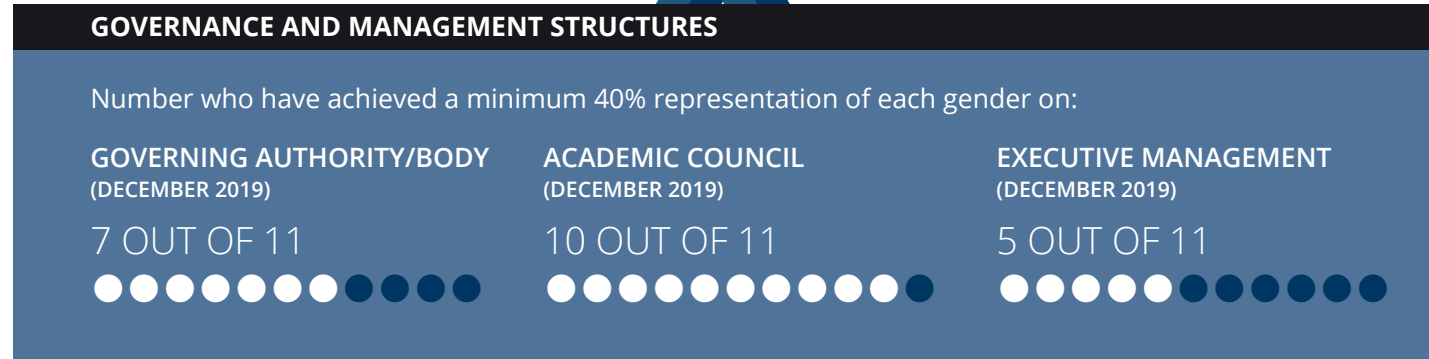
\*\* PMSS data provided here is comprised of data from full- and part-time staff.

## ATHENA SWAN STATUS (2019)

	BRONZE	SILVER	GOLD
Institutional Athena SWAN awardees	7	0	0
Departmental Athena SWAN awardees	30	0	0

# KEY FACTS & FIGURES Higher Education Data by Gender

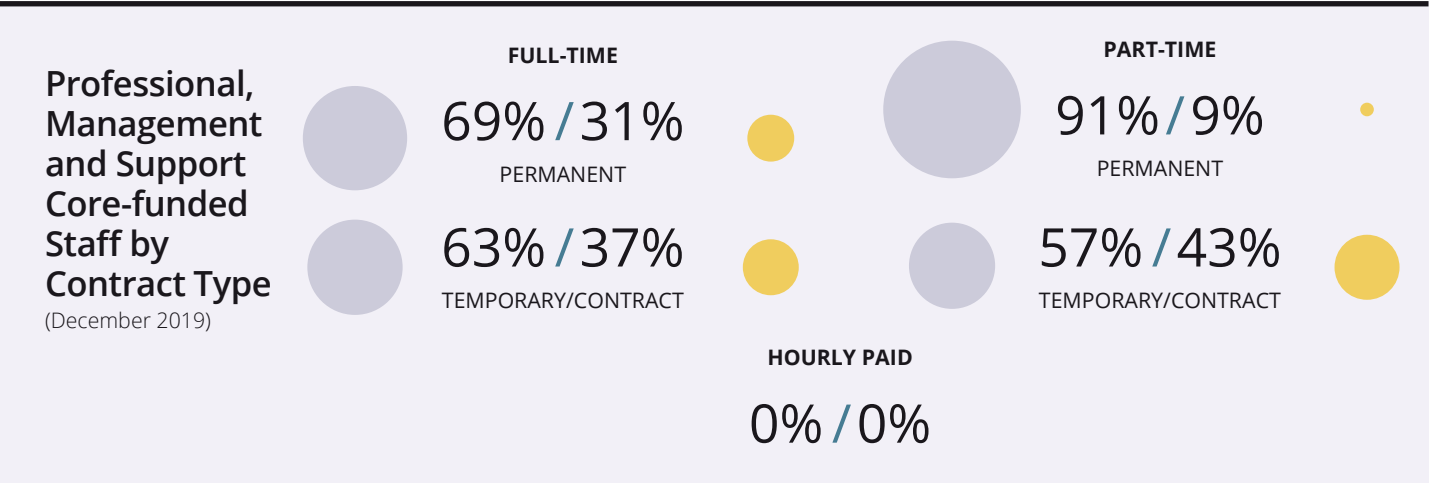
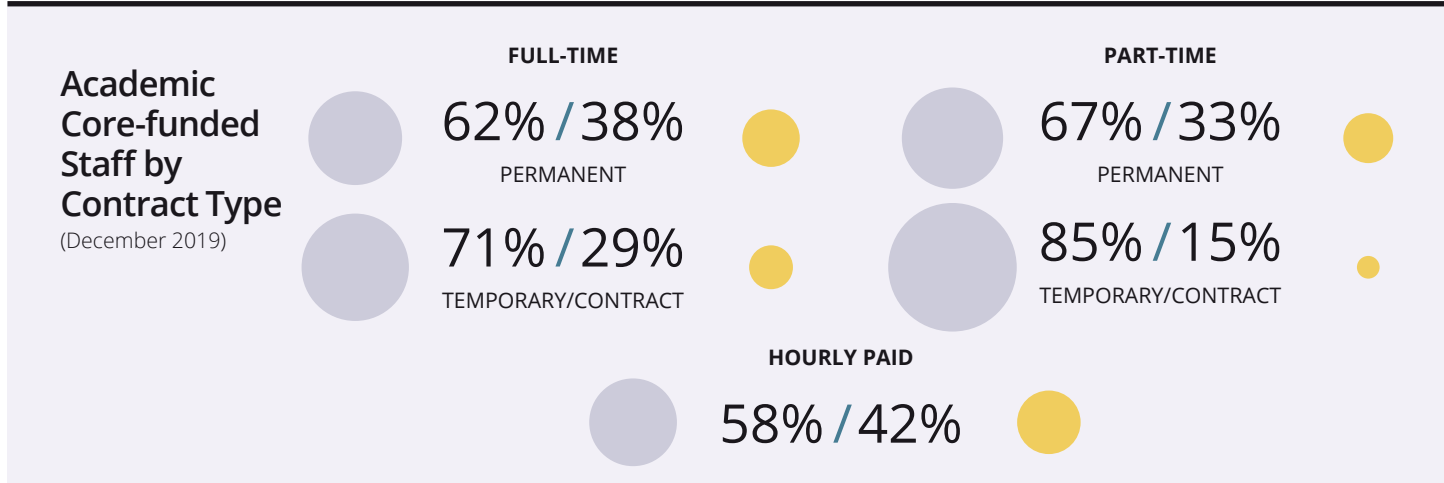
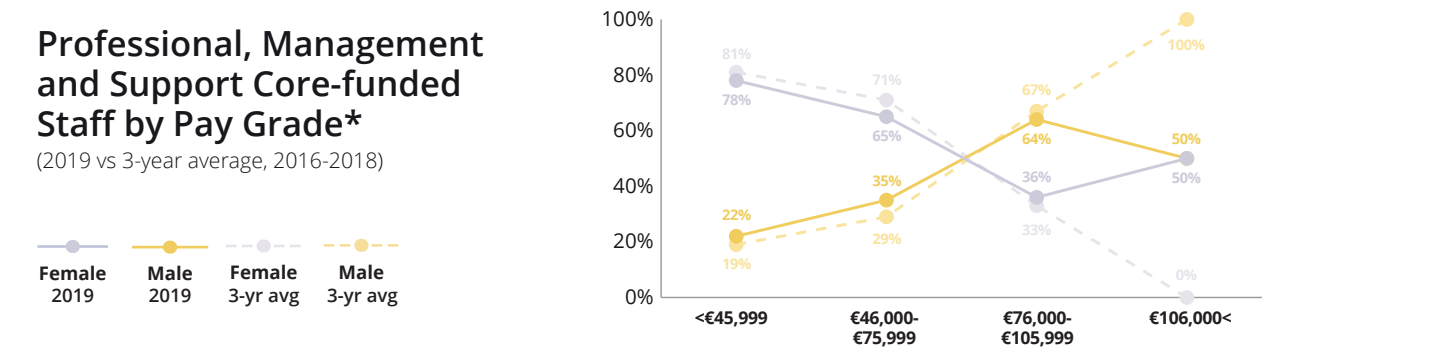
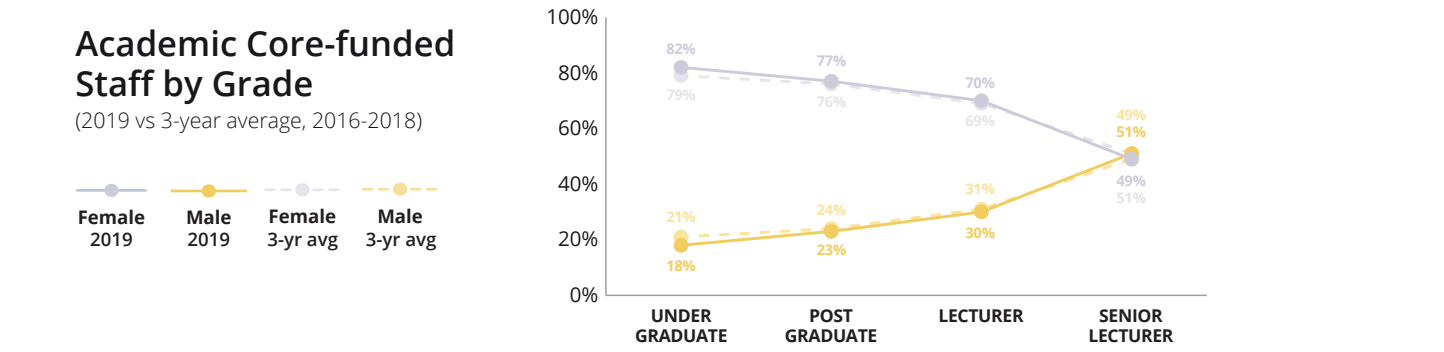
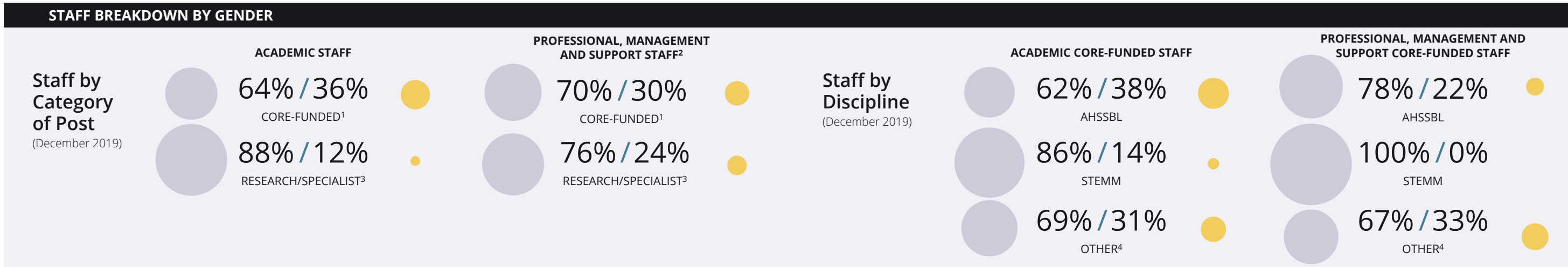
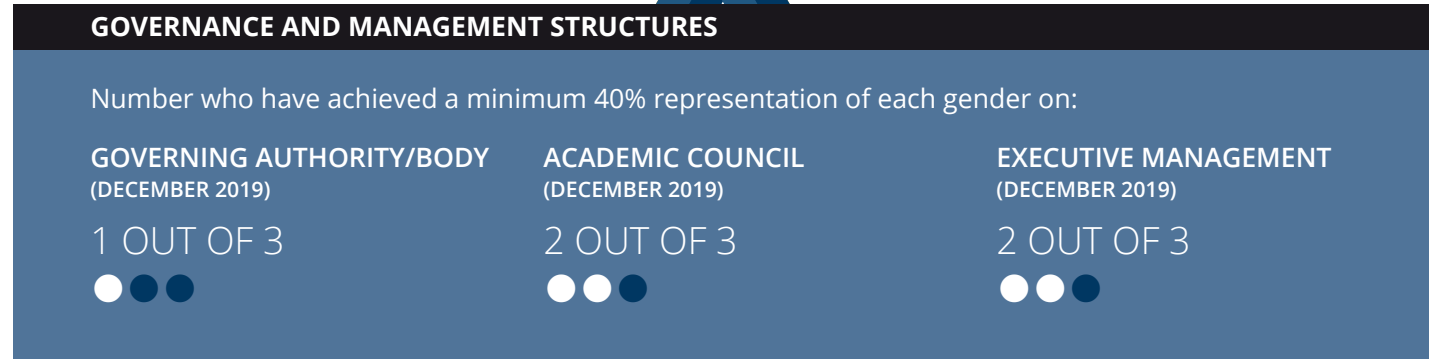
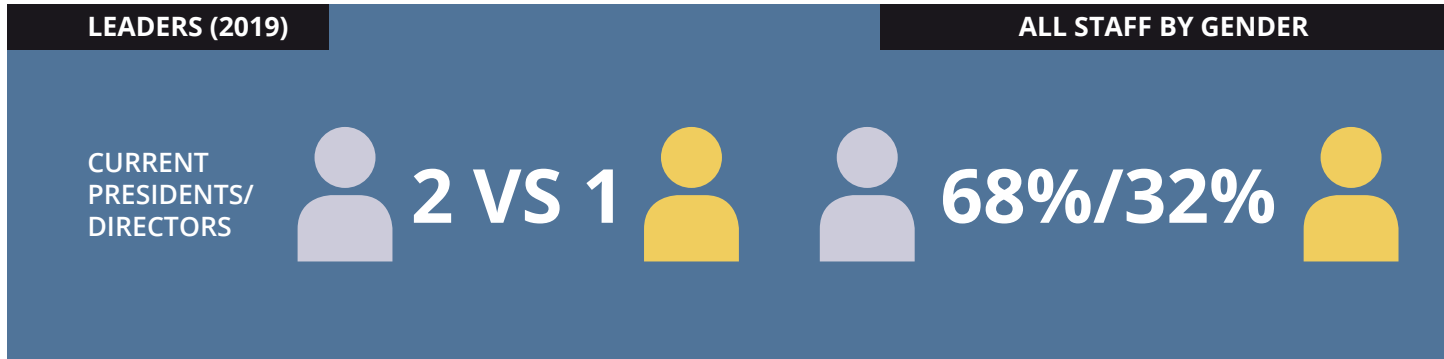
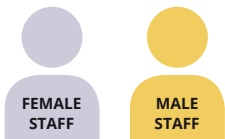
## Total Institute of Technology Sector Staff



Data presented here is comprised of data from AIT, CIT, DkIT, GMIT, IADT, ITC, ITS, ITTra, LYIT, LIT and WIT.  
<sup>1</sup> Posts funded from the core grant allocated to the universities, institutes of technology and other colleges by the HEA is voted by the Oireachtas under the OME C4 sub-head.  
<sup>2</sup> This refers to administration/support staff.  
<sup>3</sup> Non-core grant funded research and specialist posts. These may include posts funded from both Exchequer and Non-Exchequer resources.  
<sup>4</sup> 'Other' includes any core-funded posts which are not assigned to 'AHSSBL' or 'STEMM' faculties.  
 \* PMSS data provided here is comprised of data from full- and part-time staff.

ATHENA SWAN STATUS (2019)	BRONZE	SILVER	GOLD
Institutional Athena SWAN awardees	3	0	0
Departmental Athena SWAN awardees	0	0	0

# Total College Sector Staff



Data presented here is comprised of data from MIC, NCAD and St. Angela's.  
<sup>1</sup> Posts funded from the core grant allocated to the universities, institutes of technology and other colleges by the HEA is voted by the Oireachtas under the OME C4 sub-head.  
<sup>2</sup> This refers to administration/support staff.  
<sup>3</sup> Non-core grant funded research and specialist posts. These may include posts funded from both Exchequer and Non-Exchequer resources.  
<sup>4</sup> 'Other' includes any core-funded posts which are not assigned to 'AHSSBL' or 'STEMM' faculties.  
 \* PMSS data provided here is comprised of data from full- and part-time staff.

ATHENA SWAN STATUS (2019)	BRONZE	SILVER	GOLD
Institutional Athena SWAN awardees	1	0	0
Departmental Athena SWAN awardees	0	0	0