



Solar Power Generation at Landfills in Maryland

What You Need to Know

The Department has approved several solar panel installations at various landfills located in Maryland. The Department considers this to be an excellent use for these sites, which can be integrated with landfill-gas-powered generators if the site is equipped with them, and also be integrated into open-space uses of the property. The installations are easily designed to be protective of the closure caps used to minimize the formation of leachate inside the landfill. Aerial photographs © Google Earth, 2018.

Approved Landfill Solar Projects

The Department has approved plans to install solar panels at the following landfill sites. Some of these installations will be on top of the landfills, while a few will be on unfilled areas of the landfill property. Not all have been constructed to date.

Annapolis Municipal Landfill - AA County
Hoods Mill Municipal Landfill - Carroll County
Fort Detrick Municipal Landfill - Frederick County
Reichs Ford Site A Municipal Landfill - Frederick County
40 West Municipal Landfill - Washington County
Maietta Rubble Landfill - Washington County
Resh Road Municipal Landfill - Washington County

Possible Future Projects

Additionally, the owners of the following landfills have expressed interest in installing solar panels at their landfills, but the Department has not yet received plans.

Hernwood Municipal Landfill - Baltimore County
Oaks Municipal Landfill - Montgomery County
Brown Station Road Area A Municipal Landfill - Prince George's County
Berlin Municipal Landfill - Worcester County
Snow Hill Municipal Landfill - Worcester County

We have heard that the County governments that own Glen Burnie LF in Anne Arundel County and the Southwest Area Park (a former landfill) in Baltimore County were in discussions with solar providers as well.



Annapolis LF, Anne Arundel County



Hood's Mill LF, Carroll County

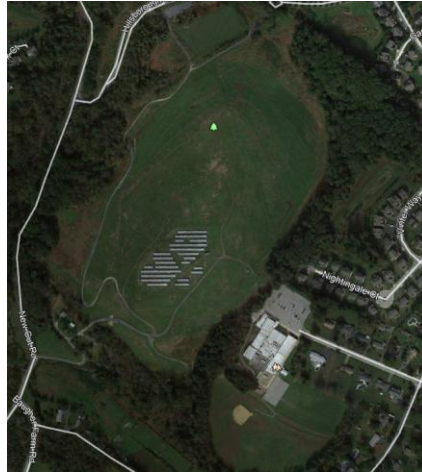


Solar Power Generation at Landfills in Maryland

What You Need to Know



New Cut Road Landfill, Howard County



New Cut Road, Howard County



Maietta RF, Fred Co.



Maietta Rubble LF, Washington County



40 West Landfill, Washington County



Resh Road Landfill, Washington County