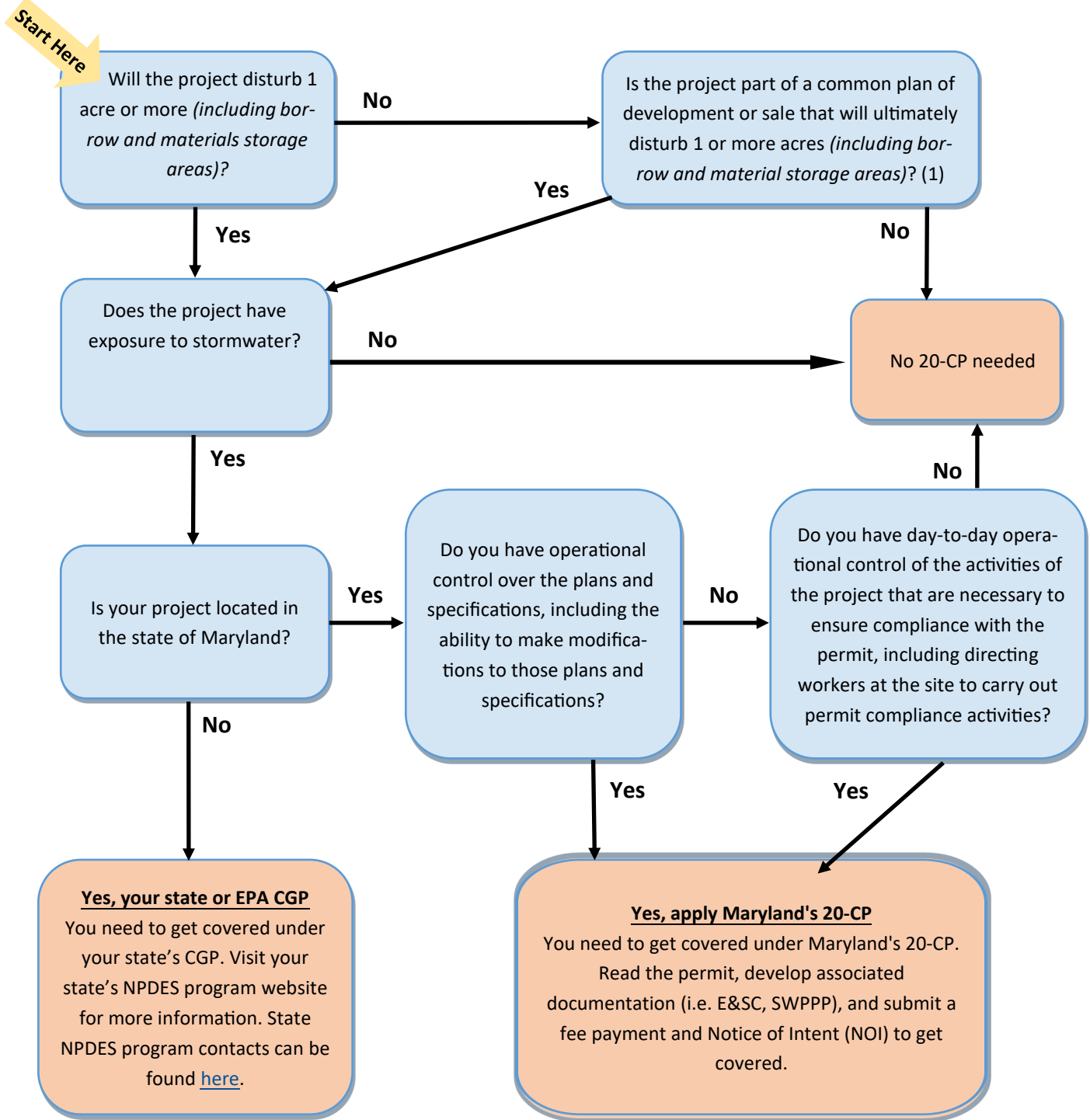


Do I need to get coverage under the (20-CP) NPDES General Permit for Stormwater Discharge Associated with Construction Activity?



Need assistance? Contact Us -

MDE Industrial Stormwater Division: Jennifer Nitsch (jennifer.nitsch@maryland.gov) (410)537-3019

MDE Baltimore Office: (410) 537-3323

