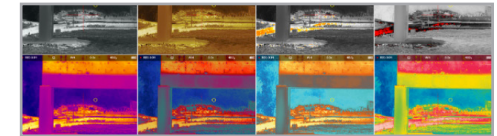


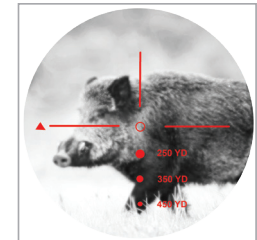


ECHO CV25

THERMAL CLIP-ON



8 Selectable Palettes



Customizable Fixed Reticles that are Configured from the BDX Mobile App



QD 1.535" Mount

ECHO CV25

1-8x25 MULTI-PURPOSE THERMAL CLIP-ON

SOEC22100

- ▶ Compact at only 5" with a QD mount
- ▶ Eyepiece optimized for parallax-free clip-on application, and can be used as a thermal sight
- ▶ LWIR 640x512 VGA 12um 50Hz thermal core with $\leq 20\text{mK}$ sensitivity
- ▶ Record still photos and video with audio
- ▶ Configurable via the BDX App including live video streaming
- ▶ Rechargeable and removeable 18650 lithium-ion battery with 9-hour runtime on a single charge
- ▶ IP67 Waterproof rating, 25mm Objective, 17° FOV, 1024x768 AMOLED microdisplay
- ▶ Ships with EVA Case, Bikini cover, (2) 18650 batteries, and USB-C charging cable
- ▶ SIG SAUER Infinite Guarantee unlimited lifetime warranty

SKU#:

SOEC22100

UPC:

798681702985

ECHO CV25

THERMAL CLIP-ON

PRODUCT DETAILS		
SKU#	SOEC31001	
MAGNIFICATION	1-8x	
FIELD OF VIEW	17.6°	
FRAME RATE	50 Hz	
RESOLUTION	640X512	
COLOR PALETTES	8	
VIDEO RECORDING	YES	
BDX ENABLED	YES	
RUNTIME	9+ HOURS	
BATTERY	[1] 18650	
WATERPROOF	IP67	
MEASUREMENTS	IMPERIAL	METRIC
OVERALL LENGTH	4.96 in	126mm
OVERALL HEIGHT	3.07 in	78mm
OVERALL WIDTH	2.99 in	76mm
WEIGHT	18.8 oz	535g

ACCESSORIES:



TANG06T DVO 1-6X24MM (FFP)



223 REM, 55GR, VARMINT AND PREDATOR



Powered by: