

NOTE: THIS PAGE NOT FOR PRINT

Company: Ardisam

Part No: 23756

Description: MANUAL GAZELLE TENT OWNERS

Type: Manual

Paper Proof To Sign: Yes

REV: 2

Born: 10-30-17

ECN No: 11799

Artist: TLJ-2059

Approved: Brendan Lonergan

Page Count: 2 pages

Process Inks: Black

Flat Size: 210mm x 297mm

Finished Size: 210mm x 297mm

Folding Style: n/a

Bleed Added: n/a

Die Line: No



CAMPING TENT ASSEMBLY AND USE INSTRUCTIONS

⚠ WARNING

READ AND UNDERSTAND ALL ASSEMBLY, INSPECTION, & USE INSTRUCTIONS PROVIDED BEFORE EACH USE. FAILURE TO FOLLOW INSTRUCTIONS COULD RESULT IN SERIOUS INJURY OR DEATH. NEVER ALLOW CHILDREN TO PLAY IN THIS PRODUCT UNATTENDED. KEEP ALL FLAME AND HEAT SOURCES AWAY FROM THIS TENT FABRIC. THIS TENT IS MADE WITH FLAME RESISTANT FABRIC WHICH MEETS CPAI-84 SPECIFICATIONS. IT IS NOT FIREPROOF. THE FABRIC WILL BURN IF LEFT IN CONTINUOUS CONTACT WITH ANY FLAME SOURCE. THE APPLICATION OF ANY FOREIGN SUBSTANCE NOT THE TENT FABRIC MAY RENDER THE FLAME RESISTANT PROPERTIES INEFFECTIVE. THE USE OF ELECTRICAL DEVICES IS NOT RECOMMENDED INSIDE THE GAZELLE CAMPING TENT.

▣ WHAT'S INCLUDED IN THE BAG

- Gazelle Camping Tent
- Detachable rain fly
- Detachable floor
- Detachable overhead gear loft
- 12 Ground Stakes
- Tie-down ropes

▣ BEFORE YOU BEGIN

- Locate a level site clear of all debris and sharp objects to prevent tears while setting up your tent.
- For easy set-up in windy conditions, make sure to position one of the corners of the tent into the wind, and stake that corner down through the provided grommet.
- Do not set up your tent under any overhead obstructions in case of falling objects or lightning strikes in inclement weather.
- The Gazelle camping tent can be set up and taken down with the floor installed or uninstalled. The rain fly must be removed before collapsing the tent, and the gear loft must be removed whenever the roof is taken down.

▣ SET-UP INSTRUCTIONS

1. Remove the camping tent from the carrying bag. Remove the tie strap from around the unit. [SEE FIGURE 1]

2. Lay the tent flat on the ground and check that there is no material twisted or overlapping the ends of any poles. DO NOT force shelter when folding or unfolding. Watch for the entanglement of poles. [SEE FIGURE 2]

NOTE: For easy set-up in windy conditions, make sure to position one of the corners of the tent into the wind, and stake that corner down through the provided grommet.

3. Grasp the webbing loop sewn onto the eyelet located in the center of one of the walls and pull outward until the wall pops open. [SEE FIGURE 3]

NOTE: For added assistance, grasp the top seam of the panel when popping open a side wall panel to help hold the tent in place.

4. Proceed by walking around the entire tent, pulling out on each webbing loop until all the side walls are popped out. [SEE FIGURE 4]

NOTE: At this time the rain fly can be assembled. See INSTALLING THE RAIN FLY on the next page.

5. Your tent should now be freestanding. Locate the zippered door and walk inside the tent. Once inside of the tent, place one hand on the bottom of the roof hub and push up until the roof pops into position. [SEE FIGURES 5 & 6]

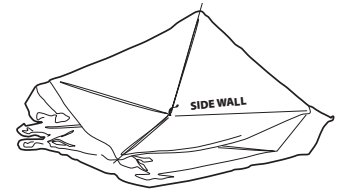
NOTE: This step should be done with caution as there is a lot of tension on the roof hub and pole assemblies.

6. Move outside of your shelter and begin anchoring the tent by using the provided stakes and tie down ropes. Use adjustment slides on rope to achieve proper tension. [SEE FIGURE 7]

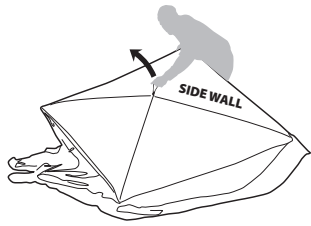
7. Hammer stakes through the grommets located in each corner completely.



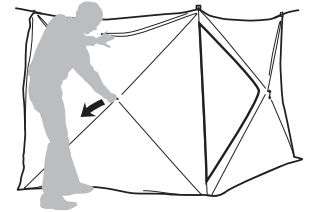
1



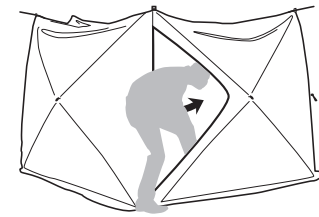
2



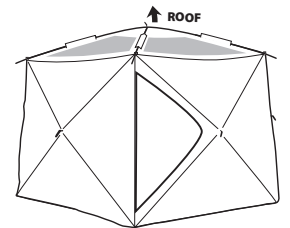
3



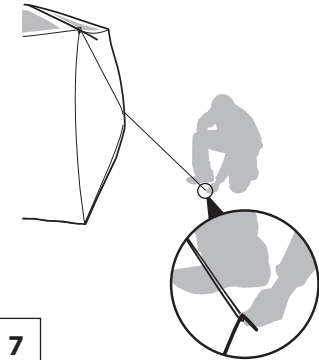
4



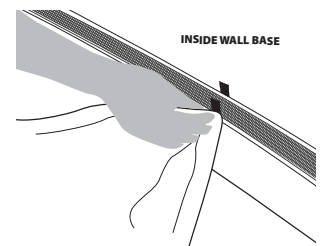
5



6



7



8

▣ INSTALLING FLOOR

1. The tent must be set up before installing the floor.
2. Spread the floor out loosely inside the tent.

NOTE: There are colored alignment tabs both on the center of the tent walls and at the center of each edge of the floor.

3. Start at the center of each wall using the colored aligning tabs as guides. Press the hook and loop strips together, working towards the corners. [SEE FIGURE 8]

NOTE: The Gazelle camping tent can be taken down and stored with or without the floor attached.

INSTALLING THE RAIN FLY

1. The tent must be free standing with all four walls popped out and the roof collapsed.
2. Slide the rain fly loosely over the tent roof. The short connecting poles should be on the underside of the rain fly.
3. Starting at one corner, insert the male end of the short poles attached to the rain fly into the female end of the roof pole. Repeat this for all four corners. [SEE FIGURE 9]
4. Enter the tent and push up to pop up the roof panel.

NOTE: Make sure everyone keeps a safe distance from the outer perimeter of the tent when popping the roof panel open and closed.

5. Outside the tent, hook the rain fly corner hooks to the hub loops at the center of each wall. [SEE FIGURE 10]

REMOVING THE RAIN FLY

1. Unhook the rain fly flaps from the hubs at the center of the outer walls. Make sure that all four hooks are released.

NOTE: If the roof panel gear loft is installed inside, it must be detached before completing step 2.

2. Enter the tent and pull down the roof hub.
3. Outside the tent, collapse one side panel hub to relieve tension on the roof poles.
4. Pull all four rain fly poles out of roof pole sockets.
5. Slide the rain fly off of the tent.
6. Re-open the collapsed side panel hub, then enter the tent and push up on the roof to re-open that panel.

NOTE: The tent is usable with or without the rain fly installed. Make sure the rain fly is clean and dry before folding and storing.

TAKE-DOWN INSTRUCTIONS

1. Remove all stakes and tie down ropes.
2. If the rain fly is installed, unhook it from all four side wall hubs.
NOTE: If the roof panel gear loft is installed inside, it must be detached before completing step 3.
3. Enter the tent and pull the center hub downward to collapse the roof.
NOTE: This step should be done with caution as there is a lot of tension on the roof hub and pole assemblies.
4. Move to the outside of the tent and zip all doors and windows shut to prevent tangling of poles. Push inward on the four side walls to collapse them. [SEE FIGURE 11]
5. The tent will now be back in its flat stage just as it was when it was unfolded out of the carry bag. Gather all corners of the shelter and fold together. Do not force the tent when folding. Watch for the entanglement of poles. [SEE FIGURE 12]

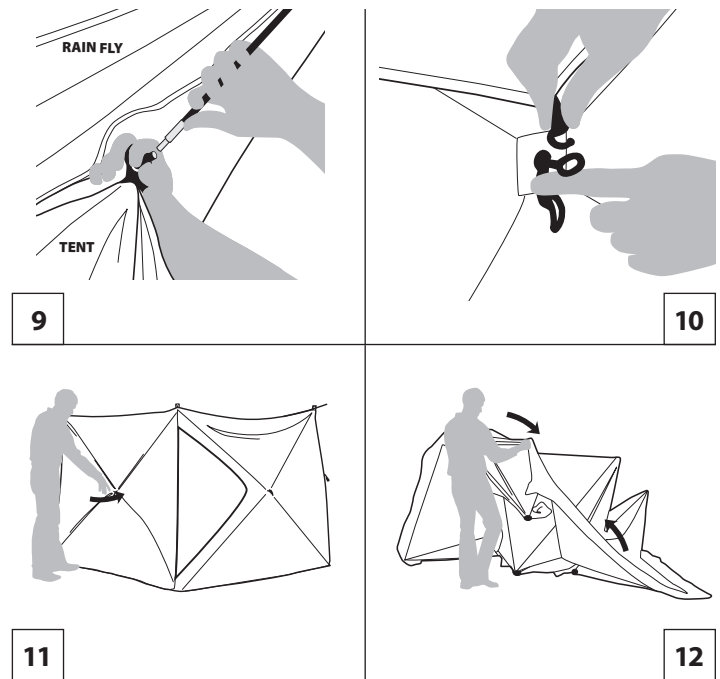
NOTE: It will help to release the air contained within the tent if you separate a small section (12 inches) of floor from the tent wall. This will allow the tent to roll back into the bag easier.

6. Take the provided tie strap and wrap it around the folded tent to allow for easier insertion into the carry bag. Place the folded tent back into the carry bag with the hubs always towards the bottom of the bag. Place the stakes, tie down ropes, gear loft, rain fly, and floor into the bag as well.

SAFETY AND MAINTENANCE INSTRUCTIONS

Ultraviolet (UV) rays are an invisible part of sunlight. These rays can be harmful; sunburn, peeling paint and fading fabric are caused by UV exposure. Tent fabric is also sensitive to UV rays. Prolonged exposure to UV can cause fibers to fade and degrade. This tent will last longer if you limit its exposure to UV rays. Pitch the tent in shade when possible and don't leave the tent up longer than necessary.

- Take down the tent when not in use to avoid unnecessary fading from outdoor elements. Fading or discoloring of fabric is not covered under your warranty.
- Take down the shelter when not in use to avoid unnecessary damage.
- Use extra tie-downs during excessive winds.
- Never put the tent away wet. Always put away dry and clean to avoid mildew and other problems.



LONG TERM STORAGE

Make sure your camping tent is completely dry and clean before storing for long periods of time. Protect your camping tent from rodents, and store in a cool dry place.

WARRANTY

Ardisam, Inc., warrants this Gazelle™ Camping Tent under a one-year limited warranty to be free from defects in materials or workmanship or both for a period not exceeding twelve consecutive months from the date of original purchase by the first retail consumer or commercial end user. "Consumer use" means personal recreational use by a retail consumer. "Commercial use" or "commercial application" means all other uses, including use for commercial, income producing or rental purposes. Once a product has experienced commercial use, it shall thereafter be considered as a commercial use product for purposes of this warranty. This warranty does not cover tent tears, or bent poles due to use in high wind, inclement weather conditions, unattended use or uses other than those listed in the owner's manual. This warranty applies to the original owner that provides a proof of purchase of the shelter. The warranty is not transferable. The warranty period begins on the date of purchase by the first retail consumer or commercial end user, and continues for the twelve month consecutive period thereafter. Any unit used in a commercial application is covered for a period of 90 days after purchase. For the warranty to be valid, the product must be registered by filling out the warranty card and it must be received by Ardisam, Inc., within 30 days of purchase. Ardisam, Inc. shall not be obligated to ship any repair or replacement product to any location outside of the United States of America or Canada.

**This warranty applies only to products which have not been subjected to negligent use, misuse, uses other than those indicated in the product's owner's manual, alteration, accident, use of unauthorized parts, failure to perform periodic maintenance as specified in product's owner's manual, normal wear and tear, use of unauthorized parts or repairs performed at non-authorized service centers. There is no other expressed warranty. Implied warranties, including those of merchantability and fitness for a particular purpose, are limited to one year from purchase, or to the extent permitted by law. All other implied warranties are excluded. Liability for incidental or consequential damages are excluded to the extent exclusion is permitted by law. Ardisam, Inc. does not assume, and does not authorize any other person to assume for us, any liability in connection with the sale of our products. To obtain warranty service, you must have prior approval by calling our customer service department at 1-800-345-6007. If you choose to ship your product to Ardisam for warranty repair, you must first have prior approval from Ardisam by calling our customer service department for a return material authorization number (RMA#). Under these circumstances, all items must be shipped prepaid. Ardisam will at no charge, repair or replace, at their discretion, any defective part which satisfies all conditions stated above. Ardisam retains the right to change models, specifications and price without notice. Ardisam, Inc. shall not be obligated to ship any repair or replacement product to any location outside of the United States of America or Canada.*