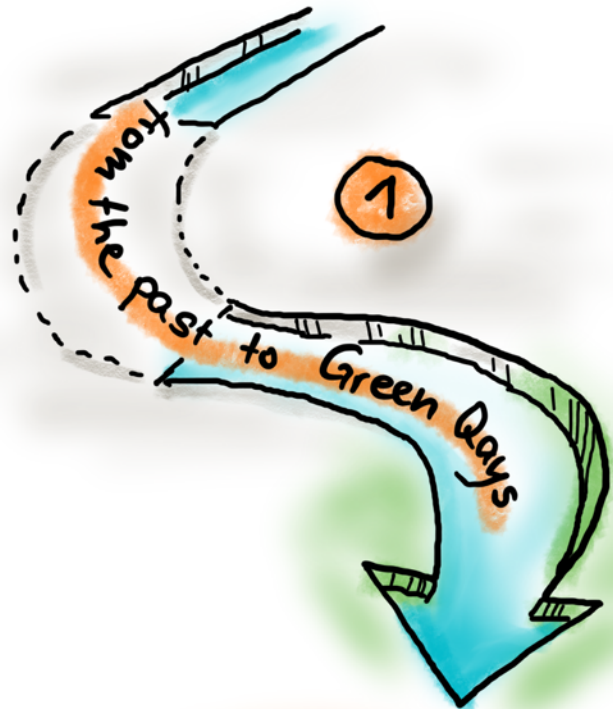
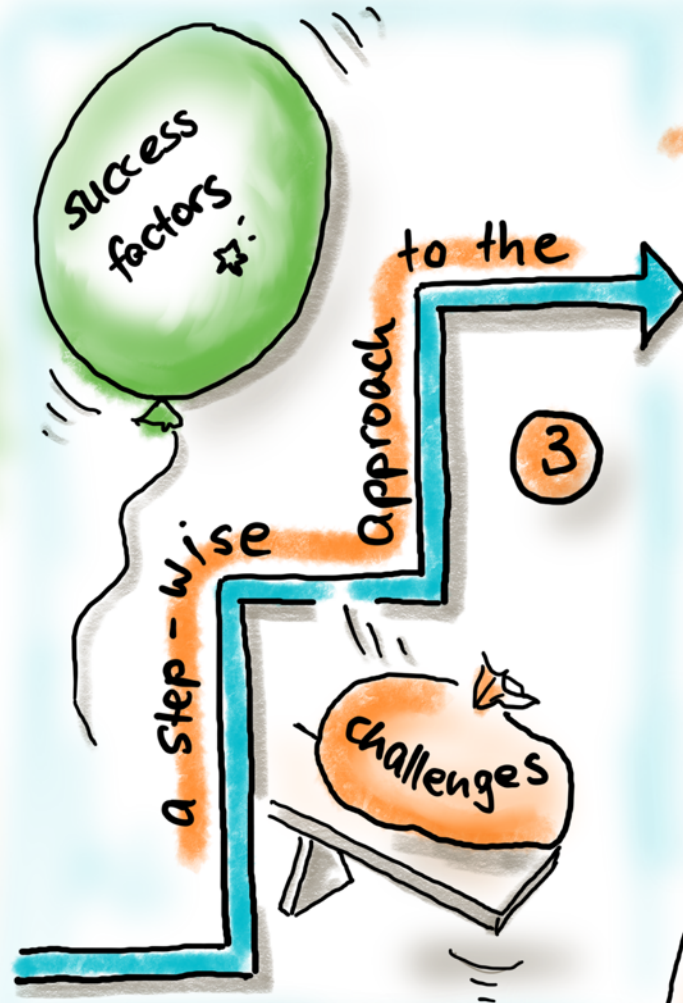


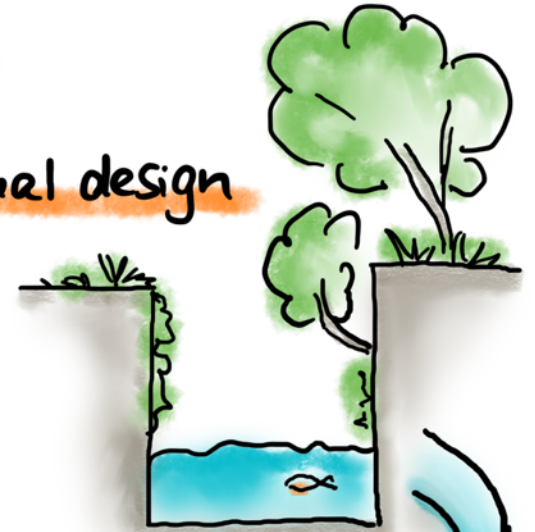
Green Days - the design process



Partnership



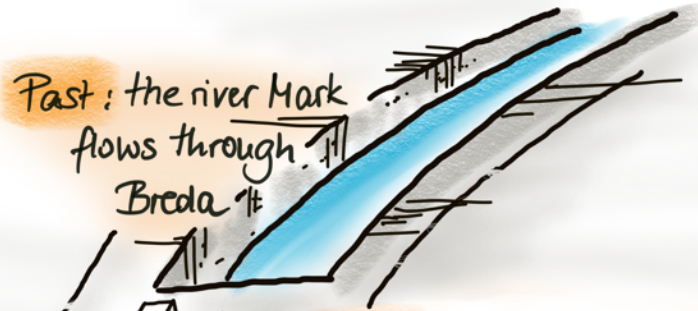
Final design



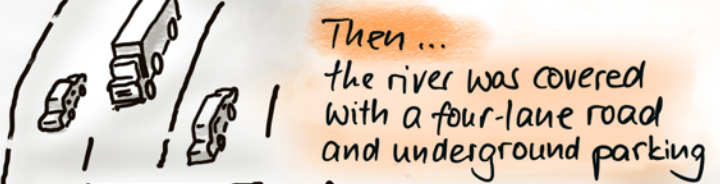
1

The road to Green Quays

from covered → blue/grey → blue/green



Past: the river Mark flows through Breda



Then ... the river was covered with a four-lane road and underground parking



1990s: the mindset changed

the harbour part was re-opened

and cars have been pushed back to two lanes

~ 2016: the new Mark project plans to reopen the river completely and make it navigable



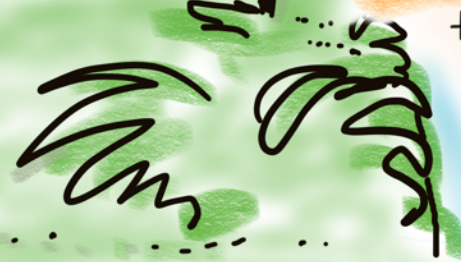
Citizens intervene - They want much more green!



Politicians also want it greener

... but there is little space! ?

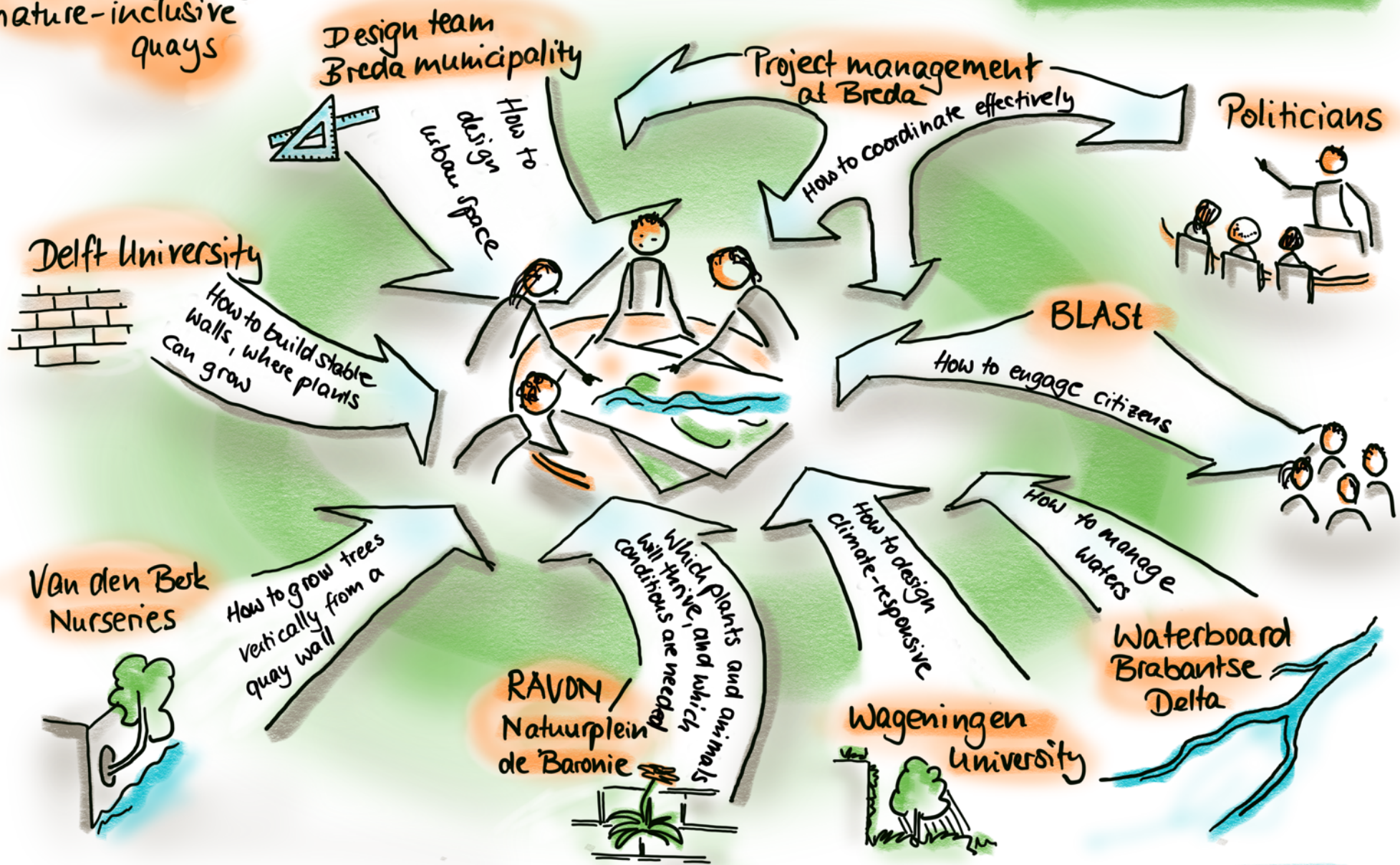
2019: Urban Innovative Action the Green Quays project will go vertical and develop Nature Inclusive Quays



NIQ design with an innovative partnership

2

How to design nature-inclusive quays?



3

Stepwise to the final design

Success factors
★

collaborative
open minds
respect
trust

many
different
competences

political
support

Stepwise
approach
&
flexibility

highly motivated partners:
gaining high visibility
eager to learn from each other
new skills
new relations
new opportunities
inspiration & new ideas
Seeing research results coming to life

effective communication

Small-scale test site
Performance monitoring of 5 different designs

Final design

informed

further informs

technical feasibility

uncertainty of an innovative design

limited time!

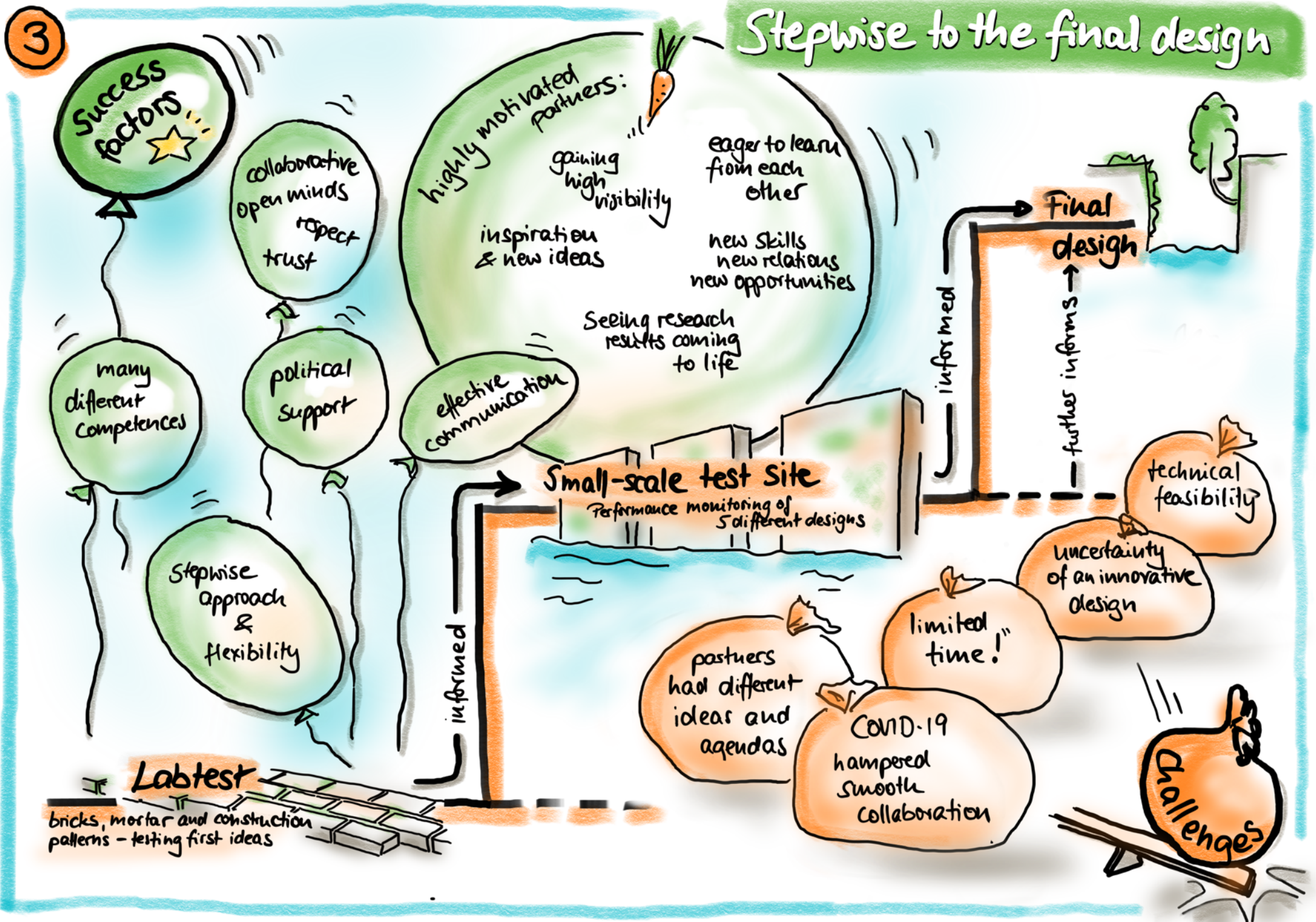
partners had different ideas and agendas

COVID-19 hampered smooth collaboration

Challenges

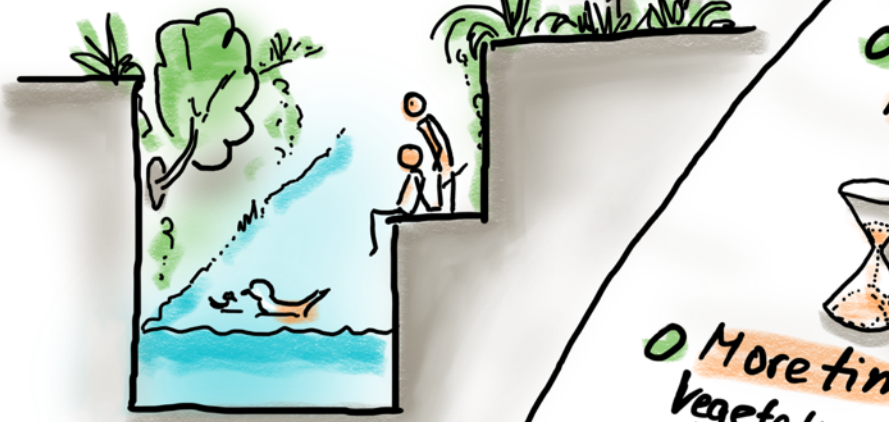
Labtest
bricks, mortar and construction patterns - testing first ideas

informed



4

The final design
integrates many different functions but is focussed on *nature-inclusiveness



***Nature-inclusiveness**
means not just conventional green walls but walls, where plants and animals are enabled to invade the quays by themselves.



Lessons learned

New ideas came up during the design process.

The design became much richer.



More time is needed. Vegetation needs to grow first.

Be flexible and adoptive when some ideas do not work out.

Jumping on the UIA initiative expanded thinking.

"Let's try some fantasy mortar made from clay, straw and lime water."

"We have never thought about water nozzles to cool public space before."

"We can change to other plants or add a substrate layer..."



Spread to other cities



continue at other parts of the river and in Breda

From here...