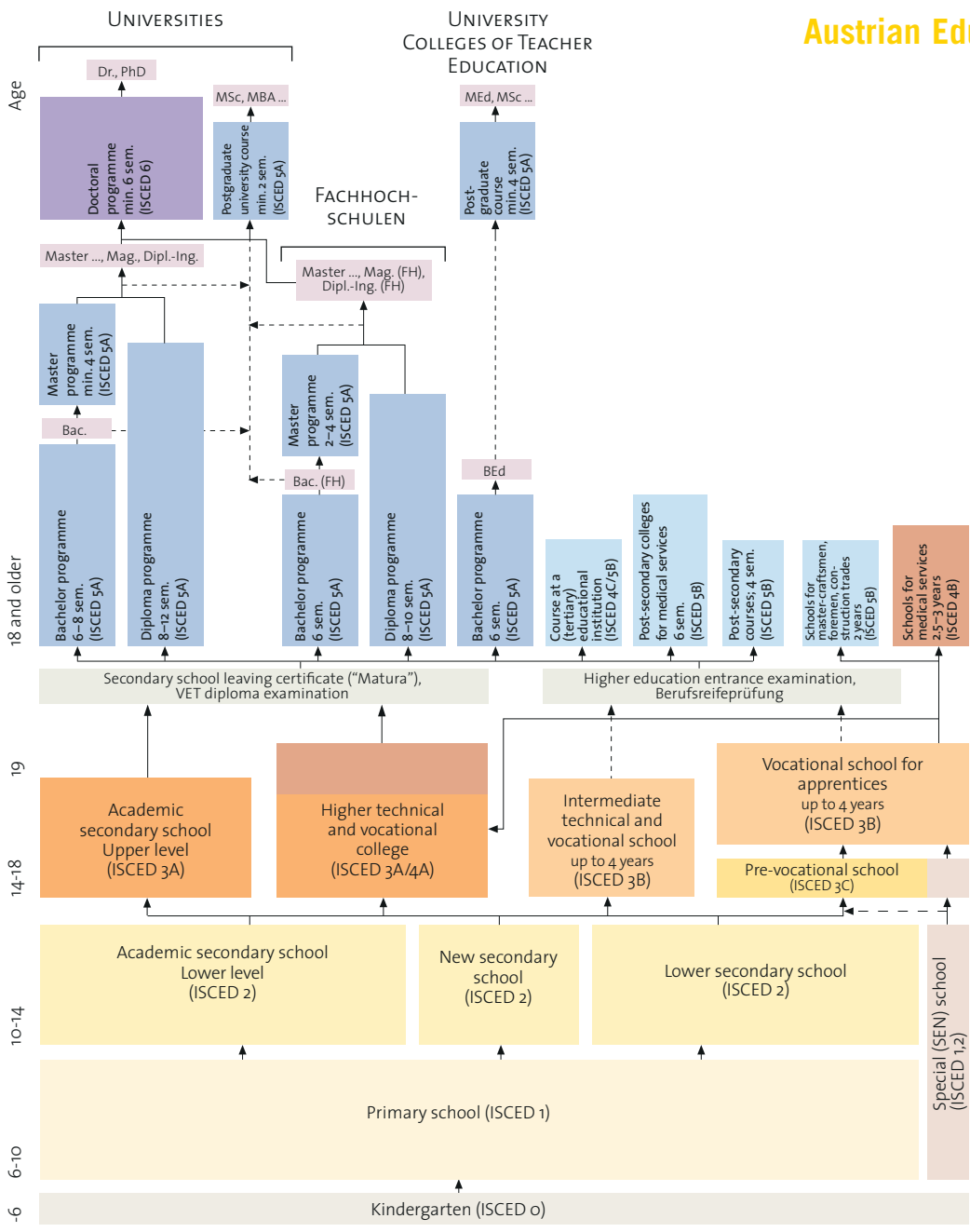


# Statistical Guide

2010

Key facts and figures  
about schools and  
adult education in Austria

# Austrian Educational System



ISCED: International Standard Classification of Education (UNESCO)

# Statistical Guide

2010

**Key facts and figures**  
about schools and  
adult education in Austria

Note on sources:

Unless other sources are indicated, data are based on a survey conducted in accordance with the Education Documentation Act and have been provided by Statistics Austria.

You are kindly requested to inform us by e-mail if your postal address has changed.  
Your comments and suggestions for future editions are welcome as well.

E-mail to: [statistik@bmukk.gv.at](mailto:statistik@bmukk.gv.at)

Postal Address:

Federal Ministry for Education, the Arts and Culture  
Division IT/1  
Education Statistics and Information Technology  
Minoritenplatz 5  
1014 Vienna, Austria

Closing date for this issue: December 21, 2010

Published and produced by:

Federal Ministry for Education, the Arts and Culture (BMUKK)  
Minoritenplatz 5, 1014 Vienna, Austria

Editors:

Susanne Archam, Maria Brauchart, Thomas Dorner, Andreas Grimm, Michael Lückl,  
Mark Német, Stephan Reingruber, Brigitte Roubal, Josef Steiner

All rights reserved.

No part of the present publication may be reproduced without quotation of source.

Cover design: Skibar Grafik Design

English translation: Wolf Zemina

Composition: P. Sachartschenko & S. Spreitzer OEG

Printed by: Berger, Horn, Austria

## Preface

Education is a success factor for Austria's societal and economic future. Therefore, we need the best quality and fair educational opportunities for all children and adolescents in Austria. Our educational system must measure up to the best ones in Europe and react to new challenges.

Education statistics is an important basis for fact-based educational policies and adequate measures for quality assurance and further development of the educational system in Austria.

This year's Statistical Guide presents key facts and figures on the field of school and adult education. In addition to the well-known tables with data on schools, classes, students as well as on the educational attainment of the resident population and EU benchmarks, this year's edition of the Statistical Guide also presents statistics on further and continuing education opportunities at University Colleges of Teacher Education.

The "Statistical Guide 2010" continues the bilingual series of publications by the Federal Ministry for Education, the Arts and Culture with updated figures.



Dr. Claudia Schmied  
Federal Minister for Education, the Arts and Culture



# Content

Table 1:	Key data on education and population statistics, 2000/01, 2008/09 and 2009/10	7
Table 2:	Demographic development, population aged 6 to 18 years, 1985 – 2035 <i>with chart</i>	8
Table 3:	Educational attainment of the population: 25 to 64 year old resident population by highest level of education attained, 2009	9
Table 4:	Schools, classes and students by type of school and federal province, school year 2009/10. <i>with charts</i>	10
Table 5:	Students with other than Austrian citizenship by type of school and federal province, school year 2009/10	16
Table 6:	Students with non-German mother tongue by type of school and federal province, school year 2009/10	17
Table 7:	Proportions of school types, distribution of all pupils/students by type of school, school year 2009/10. <i>with charts</i>	19
Table 7a:	Proportions of school types, distribution of male pupils/students by type of school, school year 2009/10	20
Table 7b:	Proportions of school types, distribution of female pupils/students by type of school, school year 2009/10	21
Table 8:	Class sizes, school year 2009/10. <i>with charts</i>	23
Table 9:	Teaching staff by school type and federal province, school year 2009/10	24
Table 10:	Recipients of student support and/or accommodation grants by support category, type of school and federal province, school year 2008/09	26
Table 11:	Recipients of student support and/or accommodation grants: average (annual) amount of support in € by support category, type of school and federal province, school year 2008/09	27
Table 12:	Students in graduation classes of upper secondary schools by school type and gender, graduation years 1990, 2000, 2005, 2009 and 2010.	28
Table 13:	University Colleges of Teacher Education: students and new entrants, winter term 2009/10.	29
Table 14:	University Colleges of Teacher Education: new entrants and graduates, academic year 2008/09	30
Table 15:	University Colleges of Teacher Education: Students in further and continuing education, winter term 2009/10 and academic year 2008/09.	31
Table 16:	Reference levels of European average performance ( <i>Benchmarks</i> ) in education and training, 2009	32
Table 17:	Adult education: number of events and participation, calendar year 2009 and academic year 2008/09, respectively	33
Table 18:	Adults' participation in lifelong learning: Population of 15 years and older by participation in training and continuing education; type, purpose and hours by age and gender, 2009	34
Table 19:	Labour force aged 25 to 64 years participating in continuing education by federal province and purpose of continuing education, 2009	35
Table 20:	Adults' participation in formal and non-formal education: population aged 25 to 64 years by participation, labour status, gender, age and highest level of completed education, 2007	36





**Table 1:**  
**Key data on education and population statistics, 2000/01, 2008/09 and 2009/10**

	2009/10		2008/09		2000/01	
	All	of which females %	All	of which females %	All	of which females %
Children in kindergartens <sup>1</sup>	213,997	49.0	210,043	49.3	208,930	49.1
Children in 1 <sup>st</sup> classes of primary schools	81,561	48.1	81,675	48.4	97,040	48.4
Students in grade 9	96,954	50.7	98,854	50.8	94,134	51.2
Students in graduation (Matura) classes of secondary schools <sup>2</sup>	45,367	56.6	44,510	57.1	39,302	56.7
of which in VET courses	1,679	76.2	1,729	75.1	1,482	69.9
New entrants at University Colleges of Teacher Education <sup>3,4</sup>	4,067	76.5	3,343	76.0	3,175	76.3
New entrants at universities and Fachhochschulen <sup>5</sup>	60,113	53.5	52,567	53.7	34,481	53.5
Students at University Colleges of Teacher Education <sup>3,6</sup>	9,521	78.0	7,928	79.4	7,506	77.1
Students at universities and Fachhochschulen <sup>6</sup>	297,475	52.8	262,191	52.8	239,691	50.2
Graduates from University Colleges of Teacher Education <sup>3,7</sup>	2,257	83.6	1,053	75.9	1,657	79.0
Graduates from universities and Fachhochschulen <sup>7</sup>	30,142	55.0	26,646	55.1	17,051	49.4
Births <sup>8</sup>	76,344	48.8	77,752	48.4	78,268	48.7
Resident population <sup>9</sup>	8,363,040	51.3	8,336,549	51.3	8,011,566	51.6
Resident population with completed secondary education <sup>8,9</sup>	5,176,800	47.6	5,089,200	47.5	4,566,800	46.8
<b>Proportion <i>in</i> % of age cohort</b>						
Children in kindergartens <sup>1</sup>	88.5	89.5	86.5	87.6	77.6	n.a.
Graduates from (upper) secondary schools <sup>10</sup>	43.2	49.4	42.8	49.3	38.3	43.9
Resident population with completed secondary education <sup>8,9,11</sup>	83.3	78.4	82.5	77.8	77.4	71.1
Proportion of higher education graduates <sup>8,9,12</sup>	16.4	17.9	15.1	16.4	8.1	7.2

1 Children aged 3 to 5 years (age as at September 1) in public and private nurseries, kindergartens, day-homes and mixed-age child care institutions.

2 Students in graduation classes of secondary schools with Matura school leaving certificate (higher education entrance qualification), school year; including VET courses.

3 2000/01: post-secondary colleges for teacher training.

4 2009/10: winter term; 2008/09 und 2000/01: academic year.

5 New entrants in university degree programmes, Fachhochschule degree programmes and at private universities; respective academic year.

6 Total of all students in degree programmes; winter terms.

7 First degrees of students (diploma, bachelor); respective academic year.

8 Calendar years 2009, 2008 and 2000; births: live births; resident population: annual average.

9 Microcensus annual average.

10 As 2, without VET courses, in relation to the average of the corresponding age group (arithmetic mean of the 18 to 19 year old resident population).

11 Proportion of persons aged 25 to 64 years with at least completed secondary education in relation to the resident population of the same age group.

12 Proportion of persons aged 25 to 64 years with completed higher education or equivalent study programmes (Universities, Fachhochschul courses, other HE institutions, from 2008 including University Colleges of Teacher Education) in relation to the labour force of the same age group.

n.a. – Not available.

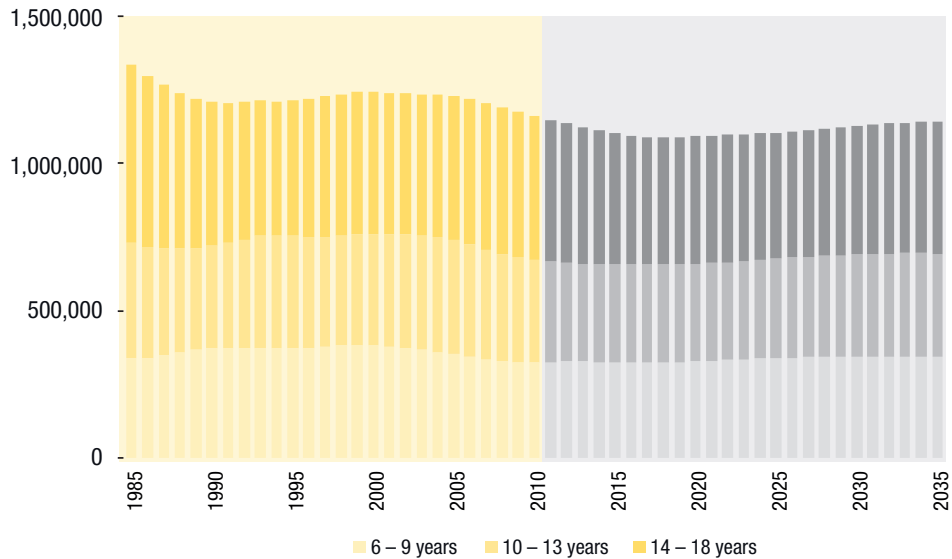
Source: Statistics Austria

**Table 2:**  
Demographic development, population aged 6 to 18 years, 1985 – 2035<sup>1</sup>

	6 – 9 years	10 – 13 years	14 – 18 years
1985	340,712	390,129	605,223
1990	372,307	346,381	490,550
1995	371,325	382,390	459,514
2000	384,043	377,066	480,780
2005	351,251	387,895	488,788
<b>2010</b>	<b>325,318</b>	<b>347,476</b>	<b>489,781</b>
2015	325,000	334,405	443,999
2020	328,961	331,034	431,878
2025	338,975	338,008	427,337
2030	343,991	347,486	436,904
2035	342,930	351,240	448,216

<sup>1</sup> Resident population, annual average; from 2010: forecast.

Source: Statistics Austria



**Table 3:**  
**Educational attainment of the population:**  
**25 to 64 year old resident population by highest level of education attained, 2009**

	Total		Compulsory school		Apprenticeship		Intermediate VET school		Upper secondary school with "Matura" <sup>1</sup> exam		University, university college and equivalent study program	
	Thousands	Pro-portion %	Thousands	Pro-portion %	Thousands	Pro-portion %	Thousands	Pro-portion %	Thousands	Pro-portion %	Thousands	Pro-portion %
<b>All</b>												
Total	4,596.9	100.0	769.9	16.7	1,867.8	40.6	633.7	13.8	662.7	14.4	662.8	14.4
25 to 34 years	1,079.4	100.0	120.3	11.1	410.9	38.1	124.5	11.5	230.6	21.4	193.1	17.9
35 to 44 years	1,324.0	100.0	183.9	13.9	551.7	41.7	181.9	13.7	205.5	15.5	201.1	15.2
45 to 54 years	1,261.4	100.0	225.3	17.9	521.6	41.3	194.3	15.4	154.5	12.2	165.6	13.1
55 to 64 years	932.1	100.0	240.4	25.8	383.6	41.2	133.0	14.3	72.1	7.7	103.0	11.0
<b>Females</b>												
Females total	2,308.7	100.0	499.3	21.6	685.8	29.7	434.4	18.8	341.7	14.8	347.5	15.1
25 to 34 years	539.4	100.0	67.7	12.5	152.6	28.3	82.8	15.3	123.7	22.9	112.7	20.9
35 to 44 years	660.4	100.0	117.6	17.8	205.9	31.2	120.0	18.2	111.6	16.9	105.2	15.9
45 to 54 years	630.2	100.0	151.7	24.1	182.6	29.0	135.5	21.5	74.4	11.8	85.9	13.6
55 to 64 years	478.8	100.0	162.3	33.9	144.6	30.2	96.2	20.1	32.0	6.7	43.7	9.1
<b>Males</b>												
Males total	2,288.2	100.0	270.5	11.8	1,182.0	51.7	199.3	8.7	321.0	14.0	315.4	13.8
25 to 34 years	540.0	100.0	52.6	9.7	258.3	47.8	41.7	7.7	106.9	19.8	80.5	14.9
35 to 44 years	663.7	100.0	66.3	10.0	345.8	52.1	61.9	9.3	93.8	14.1	95.9	14.5
45 to 54 years	631.2	100.0	73.6	11.7	338.9	53.7	58.8	9.3	80.1	12.7	79.7	12.6
55 to 64 years	453.3	100.0	78.1	17.2	238.9	52.7	36.9	8.1	40.1	8.9	59.2	13.1

1 Higher education (HE) entrance qualification.

Source: Statistics Austria – Microcensus

**Table 4:**  
**Schools, classes and students by type of school and federal province, school year 2009/10**

Type of school <sup>1</sup>	Austria, total				Burgenland			
	Schools	Classes	Students		Schools	Classes	Students	
			all	of which female			all	of which female
<b>All mainstream schools</b>	<b>5,786</b>	<b>55,410</b>	<b>1,143,533</b>	<b>546,863</b>	<b>284</b>	<b>1,804</b>	<b>35,380</b>	<b>17,162</b>
<b>General schools, total</b>	<b>5,108</b>	<b>40,364</b>	<b>798,718</b>	<b>391,950</b>	<b>258</b>	<b>1,331</b>	<b>24,208</b>	<b>11,919</b>
<b>Compulsory schools, total</b>	<b>4,769</b>	<b>31,106</b>	<b>579,314</b>	<b>274,436</b>	<b>247</b>	<b>994</b>	<b>17,043</b>	<b>8,151</b>
Primary schools	3,197	17,877	329,440	159,272	191	618	10,129	4,918
Lower secondary schools	1,162	10,466	217,338	103,297	41	301	6,125	2,969
Special (SEN) schools and classes	324	1,823	13,221	4,719	12	49	308	109
Pre-vocational schools	258	940	19,315	7,148	12	26	481	155
<b>New secondary schools</b>	<b>247</b>	<b>812</b>	<b>16,848</b>	<b>7,985</b>	<b>28</b>	<b>87</b>	<b>1,576</b>	<b>748</b>
<b>Academic secondary schools, total</b>	<b>338</b>	<b>8,446</b>	<b>202,556</b>	<b>109,529</b>	<b>11</b>	<b>250</b>	<b>5,589</b>	<b>3,020</b>
Academic secondary schools, full 8/9 year cycle	271	7,225	174,264	92,552	8	191	4,301	2,272
Academic secondary schools, lower level	271	4,525	114,693	59,573	8	131	3,154	1,646
Academic secondary schools, upper level	264	2,700	59,571	32,979	7	60	1,147	626
Academic secondary schools, separate upper level	103	1,047	24,217	14,717	7	59	1,288	748
Academic secondary schools for people in employment	8	142	3,402	1,903	-	-	-	-
Add-on secondary schools	4	32	673	357	-	-	-	-
<b>Technical and vocational schools, total</b>	<b>642</b>	<b>14,462</b>	<b>329,502</b>	<b>143,874</b>	<b>25</b>	<b>458</b>	<b>10,772</b>	<b>4,859</b>
<b>Vocational schools for apprentices, total</b>	<b>160</b>	<b>6,661</b>	<b>140,256</b>	<b>48,828</b>	<b>4</b>	<b>122</b>	<b>2,650</b>	<b>693</b>
Vocational schools for apprentices	151	6,610	139,373	48,370	4	122	2,650	693
Vocational schools for agriculture and forestry for apprentices	9	51	883	458	-	-	-	-
<b>Technical and vocational schools and colleges, total</b>	<b>484</b>	<b>7,801</b>	<b>189,246</b>	<b>95,046</b>	<b>21</b>	<b>336</b>	<b>8,122</b>	<b>4,166</b>
<b>Intermediate technical and vocational schools, total</b>	<b>427</b>	<b>2,235</b>	<b>51,712</b>	<b>25,061</b>	<b>21</b>	<b>84</b>	<b>1,830</b>	<b>1,009</b>
Crafts, technical and arts schools	144	774	17,145	3,302	6	24	494	123
Schools of business administration	107	500	11,273	6,448	8	28	618	359
Schools of management and the service industries	83	369	8,545	7,314	5	17	395	351
Schools for social professions	15	60	1,563	1,442	-	-	-	-
Schools for agriculture and forestry	96	532	13,186	6,555	3	15	323	176
<b>Higher technical and vocational colleges, total</b>	<b>304</b>	<b>5,566</b>	<b>137,534</b>	<b>69,985</b>	<b>14</b>	<b>252</b>	<b>6,292</b>	<b>3,157</b>
Crafts, technical and arts colleges	110	2,504	61,765	16,136	5	103	2,697	651
Colleges of business administration	109	1,803	43,362	26,356	7	98	2,290	1,289
Colleges of management and the service industries	87	1,129	28,577	25,871	4	51	1,305	1,217
Colleges of agriculture and forestry	12	130	3,830	1,622	-	-	-	-
<b>Institutions for teacher training, total</b>	<b>38</b>	<b>584</b>	<b>15,313</b>	<b>11,039</b>	<b>1</b>	<b>15</b>	<b>400</b>	<b>384</b>
Intermediate schools for teacher training	4	209	5,407	1,615	-	-	-	-
Higher colleges for teacher training	34	375	9,906	9,424	1	15	400	384

1 Schools for the medical services and schools with a statute of their own are not included.

Schools offering several types of schooling are counted only once in sum rows.

Source: Statistics Austria – Education documentation

**Table 4 (continued):  
Schools, classes and students by type of school and federal province, school year 2009/10**

Type of school <sup>1</sup>	Carinthia				Lower Austria			
	Schools	Classes	Students		Schools	Classes	Students	
			all	of which female			all	of which female
<b>All mainstream schools</b>	<b>429</b>	<b>3,960</b>	<b>76,902</b>	<b>37,196</b>	<b>1,199</b>	<b>10,350</b>	<b>209,186</b>	<b>99,141</b>
<b>General schools, total</b>	<b>377</b>	<b>2,803</b>	<b>51,860</b>	<b>25,578</b>	<b>1,076</b>	<b>7,807</b>	<b>149,711</b>	<b>73,195</b>
<b>Compulsory schools, total</b>	<b>354</b>	<b>2,206</b>	<b>37,433</b>	<b>17,858</b>	<b>1,021</b>	<b>6,262</b>	<b>113,249</b>	<b>53,537</b>
Primary schools	259	1,358	21,177	10,345	636	3,432	63,424	30,767
Lower secondary schools	72	707	14,610	6,955	263	2,121	42,330	20,094
Special (SEN) schools and classes	23	101	774	254	113	529	3,896	1,408
Pre-vocational schools	8	40	872	304	62	180	3,599	1,268
<b>New secondary schools</b>	<b>23</b>	<b>63</b>	<b>1,387</b>	<b>708</b>	<b>48</b>	<b>115</b>	<b>2,274</b>	<b>1,055</b>
<b>Academic secondary schools, total</b>	<b>23</b>	<b>534</b>	<b>13,040</b>	<b>7,012</b>	<b>55</b>	<b>1,430</b>	<b>34,188</b>	<b>18,603</b>
Academic secondary schools, full 8/9 year cycle	15	451	11,218	5,947	44	1,250	30,228	16,268
Academic secondary schools, lower level	15	290	7,661	3,969	44	841	21,167	11,079
Academic secondary schools, upper level	15	161	3,557	1,978	41	409	9,061	5,189
Academic secondary schools, separate upper level	7	67	1,505	891	14	149	3,345	2,015
Academic secondary schools for people in employment	2	16	317	174	1	3	46	4
Add-on secondary schools	-	-	-	-	3	28	569	316
<b>Technical and vocational schools, total</b>	<b>51</b>	<b>1,141</b>	<b>24,587</b>	<b>11,178</b>	<b>119</b>	<b>2,469</b>	<b>57,633</b>	<b>24,227</b>
<b>Vocational schools for apprentices, total</b>	<b>11</b>	<b>512</b>	<b>9,303</b>	<b>3,481</b>	<b>23</b>	<b>961</b>	<b>20,617</b>	<b>5,936</b>
Vocational schools for apprentices	10	509	9,268	3,463	21	943	20,295	5,777
Vocational schools for agriculture and forestry for apprentices	1	3	35	18	2	18	322	159
<b>Technical and vocational schools and colleges, total</b>	<b>40</b>	<b>629</b>	<b>15,284</b>	<b>7,697</b>	<b>96</b>	<b>1,508</b>	<b>37,016</b>	<b>18,291</b>
<b>Intermediate technical and vocational schools, total</b>	<b>34</b>	<b>162</b>	<b>3,656</b>	<b>1,583</b>	<b>83</b>	<b>480</b>	<b>11,118</b>	<b>5,582</b>
Crafts, technical and arts schools	11	52	1,086	138	19	137	3,056	522
Schools of business administration	5	23	480	251	23	105	2,414	1,355
Schools of management and the service industries	7	28	626	464	19	80	1,764	1,456
Schools for social professions	2	6	138	128	6	30	814	773
Schools for agriculture and forestry	10	53	1,326	602	19	128	3,070	1,476
<b>Higher technical and vocational colleges, total</b>	<b>24</b>	<b>467</b>	<b>11,628</b>	<b>6,114</b>	<b>62</b>	<b>1,028</b>	<b>25,898</b>	<b>12,709</b>
Crafts, technical and arts colleges	8	186	4,690	1,145	21	441	10,906	2,431
Colleges of business administration	9	149	3,514	1,933	22	318	7,880	4,828
Colleges of management and the service industries	8	118	3,011	2,682	18	235	6,044	5,131
Colleges of agriculture and forestry	1	14	413	354	3	34	1,068	319
<b>Institutions for teacher training, total</b>	<b>1</b>	<b>16</b>	<b>455</b>	<b>440</b>	<b>6</b>	<b>74</b>	<b>1,842</b>	<b>1,719</b>
Intermediate schools for teacher training	-	-	-	-	-	-	-	-
Higher colleges for teacher training	1	16	455	440	6	74	1,842	1,719

1 Schools for the medical services and schools with a statute of their own are not included.

Schools offering several types of schooling are counted only once in sum rows.

Source: Statistics Austria – Education documentation

**Table 4 (continued):  
Schools, classes and students by type of school and federal province, school year 2009/10**

Type of school <sup>1</sup>	Upper Austria				Salzburg			
	Schools	Classes	Students		Schools	Classes	Students	
			all	of which female			all	of which female
<b>All mainstream schools</b>	<b>1,041</b>	<b>10,139</b>	<b>210,937</b>	<b>99,660</b>	<b>375</b>	<b>3,982</b>	<b>80,320</b>	<b>38,525</b>
<b>General schools, total</b>	<b>913</b>	<b>7,316</b>	<b>142,467</b>	<b>69,846</b>	<b>324</b>	<b>2,754</b>	<b>54,724</b>	<b>26,792</b>
<b>Compulsory schools, total</b>	<b>865</b>	<b>6,018</b>	<b>112,205</b>	<b>53,115</b>	<b>298</b>	<b>2,179</b>	<b>40,893</b>	<b>19,454</b>
Primary schools	582	3,340	60,070	28,787	186	1,200	22,390	10,763
Lower secondary schools	244	2,260	46,491	22,179	75	765	16,249	7,873
Special (SEN) schools and classes	38	217	1,450	506	26	150	969	333
Pre-vocational schools	55	201	4,194	1,643	19	64	1,285	485
<b>New secondary schools</b>	<b>22</b>	<b>60</b>	<b>1,308</b>	<b>608</b>	<b>10</b>	<b>21</b>	<b>464</b>	<b>208</b>
<b>Academic secondary schools, total</b>	<b>48</b>	<b>1,238</b>	<b>28,954</b>	<b>16,123</b>	<b>26</b>	<b>554</b>	<b>13,367</b>	<b>7,130</b>
Academic secondary schools, full 8/9 year cycle	39	1,063	24,864	13,466	19	459	11,101	5,748
Academic secondary schools, lower level	39	674	16,353	8,553	19	277	7,218	3,700
Academic secondary schools, upper level	39	389	8,511	4,913	19	182	3,883	2,048
Academic secondary schools, separate upper level	13	156	3,719	2,444	10	73	1,712	1,057
Academic secondary schools for people in employment	1	19	371	213	1	22	554	325
Add-on secondary schools	-	-	-	-	-	-	-	-
<b>Technical and vocational schools, total</b>	<b>121</b>	<b>2,726</b>	<b>65,857</b>	<b>27,849</b>	<b>49</b>	<b>1,207</b>	<b>25,059</b>	<b>11,209</b>
<b>Vocational schools for apprentices, total</b>	<b>28</b>	<b>1,292</b>	<b>30,440</b>	<b>10,171</b>	<b>13</b>	<b>596</b>	<b>10,875</b>	<b>3,844</b>
Vocational schools for apprentices	26	1,284	30,320	10,117	12	593	10,807	3,803
Vocational schools for agriculture and forestry for apprentices	2	8	120	54	1	3	68	41
<b>Technical and vocational schools and colleges, total</b>	<b>95</b>	<b>1,434</b>	<b>35,417</b>	<b>17,678</b>	<b>36</b>	<b>611</b>	<b>14,184</b>	<b>7,365</b>
<b>Intermediate technical and vocational schools, total</b>	<b>83</b>	<b>429</b>	<b>10,018</b>	<b>4,220</b>	<b>34</b>	<b>180</b>	<b>3,872</b>	<b>1,849</b>
Crafts, technical and arts schools	35	176	4,164	502	10	62	1,195	253
Schools of business administration	16	66	1,401	802	8	34	690	344
Schools of management and the service industries	15	69	1,530	1,414	9	45	978	810
Schools for social professions	1	4	83	74	1	3	83	77
Schools for agriculture and forestry	18	114	2,840	1,428	7	36	926	365
<b>Higher technical and vocational colleges, total</b>	<b>55</b>	<b>1,005</b>	<b>25,399</b>	<b>13,458</b>	<b>27</b>	<b>431</b>	<b>10,312</b>	<b>5,516</b>
Crafts, technical and arts colleges	21	441	11,222	2,796	8	169	4,249	1,261
Colleges of business administration	18	311	7,583	4,749	8	144	3,275	1,886
Colleges of management and the service industries	15	232	5,936	5,541	10	106	2,422	2,258
Colleges of agriculture and forestry	2	21	658	372	1	12	366	111
<b>Institutions for teacher training, total</b>	<b>7</b>	<b>97</b>	<b>2,613</b>	<b>1,965</b>	<b>2</b>	<b>21</b>	<b>537</b>	<b>524</b>
Intermediate schools for teacher training	1	36	947	347	-	-	-	-
Higher colleges for teacher training	6	61	1,666	1,618	2	21	537	524

1 Schools for the medical services and schools with a statute of their own are not included.

Schools offering several types of schooling are counted only once in sum rows.

Source: Statistics Austria – Education documentation

**Table 4 (continued):  
Schools, classes and students by type of school and federal province, school year 2009/10**

Type of school <sup>1</sup>	Styria				Tyrol			
	Schools	Classes	Students		Schools	Classes	Students	
			all	of which female			all	of which female
<b>All mainstream schools</b>	<b>916</b>	<b>7,579</b>	<b>156,374</b>	<b>73,811</b>	<b>661</b>	<b>5,000</b>	<b>102,245</b>	<b>49,429</b>
<b>General schools, total</b>	<b>799</b>	<b>5,423</b>	<b>107,238</b>	<b>52,221</b>	<b>585</b>	<b>3,705</b>	<b>70,319</b>	<b>34,476</b>
<b>Compulsory schools, total</b>	<b>751</b>	<b>4,160</b>	<b>76,986</b>	<b>36,251</b>	<b>560</b>	<b>3,078</b>	<b>55,586</b>	<b>26,446</b>
Primary schools	522	2,490	43,992	21,120	392	1,644	28,751	13,934
Lower secondary schools	178	1,466	29,987	14,220	109	1,140	23,341	11,255
Special (SEN) schools and classes	26	79	603	197	33	189	1,264	422
Pre-vocational schools	49	125	2,404	714	32	105	2,230	835
<b>New secondary schools</b>	<b>35</b>	<b>147</b>	<b>3,125</b>	<b>1,445</b>	<b>8</b>	<b>20</b>	<b>440</b>	<b>224</b>
<b>Academic secondary schools, total</b>	<b>48</b>	<b>1,116</b>	<b>27,127</b>	<b>14,525</b>	<b>25</b>	<b>607</b>	<b>14,293</b>	<b>7,806</b>
Academic secondary schools, full 8/9 year cycle	36	915	22,253	11,766	18	470	11,361	5,967
Academic secondary schools, lower level	36	560	14,319	7,410	18	283	7,366	3,834
Academic secondary schools, upper level	36	355	7,934	4,356	18	187	3,995	2,133
Academic secondary schools, separate upper level	16	183	4,428	2,514	10	104	2,333	1,554
Academic secondary schools for people in employment	1	18	446	245	1	29	495	244
Add-on secondary schools	-	-	-	-	1	4	104	41
<b>Technical and vocational schools, total</b>	<b>109</b>	<b>2,055</b>	<b>46,539</b>	<b>19,884</b>	<b>71</b>	<b>1,229</b>	<b>30,155</b>	<b>13,931</b>
<b>Vocational schools for apprentices, total</b>	<b>22</b>	<b>994</b>	<b>21,466</b>	<b>7,473</b>	<b>25</b>	<b>584</b>	<b>13,865</b>	<b>5,277</b>
Vocational schools for apprentices	20	984	21,289	7,356	24	575	13,704	5,208
Vocational schools for agriculture and forestry for apprentices	2	10	177	117	1	9	161	69
<b>Technical and vocational schools and colleges, total</b>	<b>87</b>	<b>1,061</b>	<b>25,073</b>	<b>12,411</b>	<b>46</b>	<b>645</b>	<b>16,290</b>	<b>8,654</b>
<b>Intermediate technical and vocational schools, total</b>	<b>77</b>	<b>291</b>	<b>6,254</b>	<b>3,284</b>	<b>39</b>	<b>215</b>	<b>5,335</b>	<b>2,802</b>
Crafts, technical and arts schools	18	79	1,450	190	17	79	1,884	699
Schools of business administration	16	54	1,046	605	11	51	1,163	627
Schools of management and the service industries	9	35	751	645	6	28	797	780
Schools for social professions	3	8	200	179	-	-	-	-
Schools for agriculture and forestry	32	115	2,807	1,665	6	57	1,491	696
<b>Higher technical and vocational colleges, total</b>	<b>43</b>	<b>770</b>	<b>18,819</b>	<b>9,127</b>	<b>30</b>	<b>430</b>	<b>10,955</b>	<b>5,852</b>
Crafts, technical and arts colleges	10	339	8,300	1,739	15	192	4,878	1,499
Colleges of business administration	16	252	5,859	3,685	10	152	3,670	2,113
Colleges of management and the service industries	14	148	3,707	3,454	6	78	2,171	2,098
Colleges of agriculture and forestry	3	31	953	249	1	8	236	142
<b>Institutions for teacher training, total</b>	<b>8</b>	<b>101</b>	<b>2,597</b>	<b>1,706</b>	<b>5</b>	<b>66</b>	<b>1,771</b>	<b>1,022</b>
Intermediate schools for teacher training	1	42	1,072	268	1	37	984	278
Higher colleges for teacher training	7	59	1,525	1,438	4	29	787	744

1 Schools for the medical services and schools with a statute of their own are not included.

Schools offering several types of schooling are counted only once in sum rows.

Source: Statistics Austria – Education documentation

**Table 4 (continued):  
Schools, classes and students by type of school and federal province, school year 2009/10**

Type of school <sup>1</sup>	Vorarlberg				Vienna			
	Schools	Classes	Students		Schools	Classes	Students	
			all	of which female			all	of which female
<b>All mainstream schools</b>	<b>280</b>	<b>2,825</b>	<b>56,637</b>	<b>27,503</b>	<b>601</b>	<b>9,771</b>	<b>215,552</b>	<b>104,436</b>
<b>General schools, total</b>	<b>255</b>	<b>2,139</b>	<b>41,112</b>	<b>20,080</b>	<b>521</b>	<b>7,086</b>	<b>157,079</b>	<b>77,843</b>
<b>Compulsory schools, total</b>	<b>242</b>	<b>1,594</b>	<b>28,782</b>	<b>13,687</b>	<b>431</b>	<b>4,615</b>	<b>97,137</b>	<b>45,937</b>
Primary schools	165	950	17,032	8,247	264	2,845	62,475	30,391
Lower secondary schools	55	434	9,333	4,551	125	1,272	28,872	13,201
Special (SEN) schools and classes	18	143	1,078	401	35	366	2,879	1,089
Pre-vocational schools	10	67	1,339	488	11	132	2,911	1,256
<b>New secondary schools</b>	<b>51</b>	<b>217</b>	<b>4,382</b>	<b>2,128</b>	<b>22</b>	<b>82</b>	<b>1,892</b>	<b>861</b>
<b>Academic secondary schools, total</b>	<b>13</b>	<b>328</b>	<b>7,948</b>	<b>4,265</b>	<b>89</b>	<b>2,389</b>	<b>58,050</b>	<b>31,045</b>
Academic secondary schools, full 8/9 year cycle	10	256	6,325	3,243	82	2,170	52,613	27,875
Academic secondary schools, lower level	10	158	4,147	2,169	82	1,311	33,308	17,213
Academic secondary schools, upper level	10	98	2,178	1,074	79	859	19,305	10,662
Academic secondary schools, separate upper level	6	72	1,623	1,022	20	184	4,264	2,472
Academic secondary schools for people in employment	-	-	-	-	1	35	1,173	698
Add-on secondary schools	-	-	-	-	-	-	-	-
<b>Technical and vocational schools, total</b>	<b>24</b>	<b>673</b>	<b>15,201</b>	<b>7,102</b>	<b>73</b>	<b>2,504</b>	<b>53,699</b>	<b>23,635</b>
<b>Vocational schools for apprentices, total</b>	<b>8</b>	<b>358</b>	<b>7,254</b>	<b>2,592</b>	<b>26</b>	<b>1,242</b>	<b>23,786</b>	<b>9,361</b>
Vocational schools for apprentices	8	358	7,254	2,592	26	1,242	23,786	9,361
Vocational schools for agriculture and forestry for apprentices	-	-	-	-	-	-	-	-
<b>Technical and vocational schools and colleges, total</b>	<b>16</b>	<b>315</b>	<b>7,947</b>	<b>4,510</b>	<b>47</b>	<b>1,262</b>	<b>29,913</b>	<b>14,274</b>
<b>Intermediate technical and vocational schools, total</b>	<b>14</b>	<b>95</b>	<b>2,352</b>	<b>1,305</b>	<b>42</b>	<b>299</b>	<b>7,277</b>	<b>3,427</b>
Crafts, technical and arts schools	6	38	852	283	22	127	2,964	592
Schools of business administration	5	24	617	396	15	115	2,844	1,709
Schools of management and the service industries	5	19	480	479	8	48	1,224	915
Schools for social professions	-	-	-	-	2	9	245	211
Schools for agriculture and forestry	1	14	403	147	-	-	-	-
<b>Higher technical and vocational colleges, total</b>	<b>13</b>	<b>220</b>	<b>5,595</b>	<b>3,205</b>	<b>36</b>	<b>963</b>	<b>22,636</b>	<b>10,847</b>
Crafts, technical and arts colleges	5	91	2,177	701	17	542	12,646	3,913
Colleges of business administration	5	87	2,264	1,352	14	292	7,027	4,521
Colleges of management and the service industries	4	42	1,154	1,152	8	119	2,827	2,338
Colleges of agriculture and forestry	-	-	-	-	1	10	136	75
<b>Institutions for teacher training, total</b>	<b>1</b>	<b>13</b>	<b>324</b>	<b>321</b>	<b>7</b>	<b>181</b>	<b>4,774</b>	<b>2,958</b>
Intermediate schools for teacher training	-	-	-	-	1	94	2,404	722
Higher colleges for teacher training	1	13	324	321	6	87	2,370	2,236

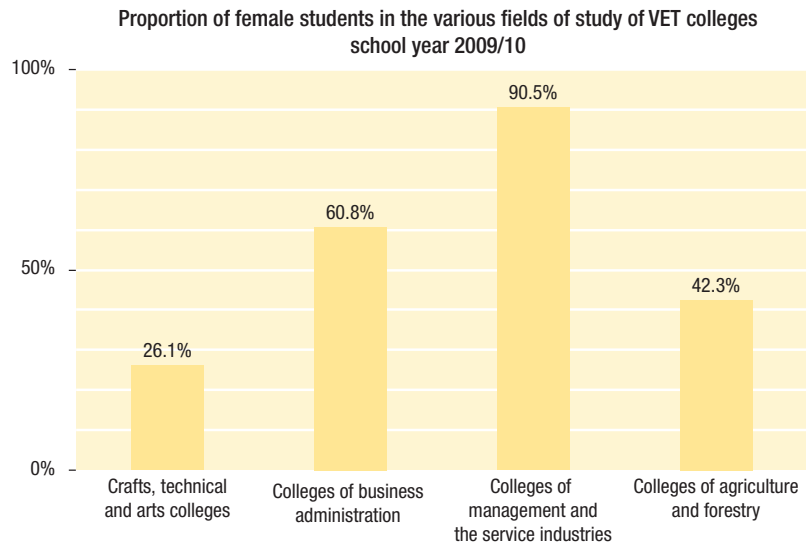
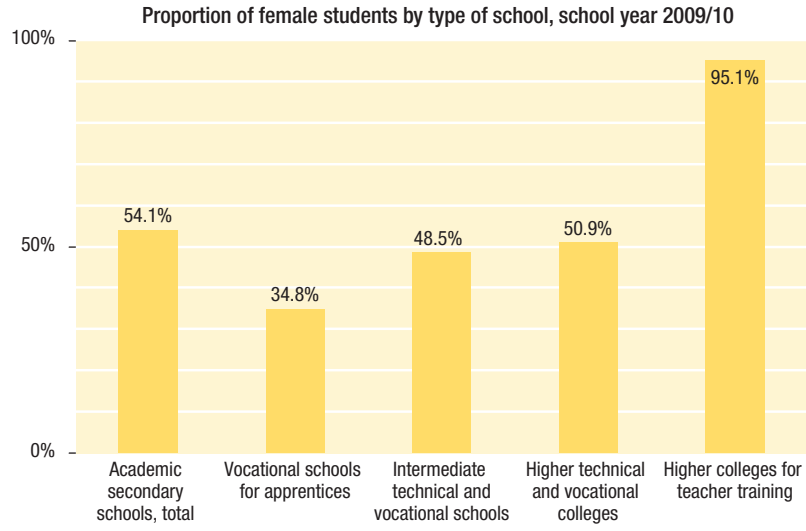
1 Schools for the medical services and schools with a statute of their own are not included.

Schools offering several types of schooling are counted only once in sum rows.

Source: Statistics Austria – Education documentation



Charts table 4:



**Table 5:  
Students with other than Austrian citizenship by type of school and federal province, school year 2009/10**

Type of school <sup>1</sup>	Austria, total	Burgenland	Carinthia	Lower Austria	Upper Austria	Salzburg	Styria	Tyrol	Vorarlberg	Vienna
<b>All mainstream schools</b>	<b>108,253</b>	<b>2,208</b>	<b>5,392</b>	<b>13,351</b>	<b>17,094</b>	<b>9,437</b>	<b>10,322</b>	<b>8,211</b>	<b>5,932</b>	<b>36,306</b>
General schools, total	85,873	1,699	4,175	10,658	13,529	7,007	8,385	6,262	4,661	29,497
Compulsory schools, total	69,376	1,242	3,345	9,132	12,000	5,640	6,215	5,364	3,528	22,910
Primary schools	36,660	646	1,719	4,821	5,839	2,931	3,628	2,582	1,926	12,568
Lower secondary schools	27,392	523	1,456	3,428	5,302	2,274	2,253	2,303	1,163	8,690
Special (SEN) schools and classes	2,419	28	72	535	227	208	68	222	253	806
Pre-vocational schools	2,905	45	98	348	632	227	266	257	186	846
New secondary schools	2,655	167	140	232	218	142	687	85	594	390
Academic secondary schools, total	13,842	290	690	1,294	1,311	1,225	1,483	813	539	6,197
Academic secondary schools, full 8/9 year cycle	11,751	235	612	1,188	1,102	966	1,200	666	403	5,379
Academic secondary schools, lower level	8,003	161	431	827	773	651	805	438	258	3,659
Academic secondary schools, upper level	3,748	74	181	361	329	315	395	228	145	1,720
Academic secondary schools, separate upper level	1,597	55	65	83	164	118	242	88	136	646
Academic secondary schools for people in employment	467	-	13	-	45	141	41	55	-	172
Add-on secondary schools	27	-	-	23	-	-	-	4	-	-
Technical and vocational schools, total	22,025	506	1,214	2,676	3,545	2,418	1,914	1,854	1,257	6,641
Vocational schools for apprentices, total	9,276	100	353	880	1,443	1,106	603	1,035	638	3,118
Vocational schools for apprentices	9,268	100	352	876	1,443	1,106	600	1,035	638	3,118
Vocational schools for agriculture and forestry for apprentices	8	-	1	4	-	-	3	-	-	-
Technical and vocational schools and colleges, total	12,749	406	861	1,796	2,102	1,312	1,311	819	619	3,523
Intermediate technical and vocational schools, total	4,751	113	276	778	906	471	433	332	246	1,196
Crafts, technical and arts schools	1,579	19	81	247	297	144	110	118	88	475
Schools of business administration	2,328	69	126	430	452	211	203	160	109	568
Schools of management and the service industries	613	17	44	64	119	93	65	44	40	127
Schools for social professions	64	-	9	21	2	3	3	-	-	26
Schools for agriculture and forestry	167	8	16	16	36	20	52	10	9	-
Higher technical and vocational colleges, total	7,998	293	585	1,018	1,196	841	878	487	373	2,327
Crafts, technical and arts colleges	2,889	57	116	334	374	280	364	223	101	1,040
Colleges of business administration	4,393	221	359	571	693	478	468	223	239	1,141
Colleges of management and the service industries	703	15	110	105	128	82	44	40	33	146
Colleges of agriculture and forestry	13	-	-	8	1	1	2	1	-	-
Institutions for teacher training, total	355	3	3	17	20	12	23	95	14	168
Intermediate schools for teacher training	145	-	-	-	7	-	4	79	-	55
Higher colleges for teacher training	210	3	3	17	13	12	19	16	14	113

<sup>1</sup> Schools for the medical services and schools with a statute of their own are not included.

Source: Statistics Austria – Education documentation

**Table 6:**  
**Students with non-German mother tongue by type of school and federal province, school year 2009/10**

Type of school <sup>1</sup>	Austria, total	Burgenland	Carinthia	Lower Austria	Upper Austria	Salzburg	Styria	Tyrol	Vorarlberg	Vienna
<b>All mainstream schools</b>	<b>201,397</b>	<b>4,063</b>	<b>6,912</b>	<b>22,614</b>	<b>28,737</b>	<b>12,098</b>	<b>15,252</b>	<b>11,283</b>	<b>10,427</b>	<b>90,011</b>
General schools, total	163,050	3,141	5,440	18,080	24,049	9,648	12,636	9,396	9,023	71,637
Compulsory schools, total	129,848	2,281	4,096	15,559	21,212	8,226	9,240	8,273	7,228	53,733
Primary schools	76,325	1,331	2,293	9,141	11,655	4,723	5,868	4,500	4,423	32,391
Lower secondary schools	45,363	838	1,617	5,207	8,336	2,976	2,965	3,231	2,072	18,121
Special (SEN) schools and classes	3,677	38	85	743	357	240	89	261	374	1,490
Pre-vocational schools	4,483	74	101	468	864	287	318	281	359	1,731
New secondary schools	4,631	268	200	398	412	209	935	184	1,128	897
Academic secondary schools, total	28,571	592	1,144	2,123	2,425	1,213	2,461	939	667	17,007
Academic secondary schools, full 8/9 year cycle	25,282	489	1,057	1,971	2,181	1,048	2,028	743	551	15,214
Academic secondary schools, lower level	17,383	333	734	1,389	1,599	767	1,444	492	381	10,244
Academic secondary schools, upper level	7,899	156	323	582	582	281	584	251	170	4,970
Academic secondary schools, separate upper level	2,601	103	68	130	163	113	360	120	116	1,428
Academic secondary schools for people in employment	665	-	19	-	81	52	73	75	-	365
Add-on secondary schools	23	-	-	22	-	-	-	1	-	-
Technical and vocational schools, total	37,876	917	1,463	4,503	4,664	2,442	2,591	1,829	1,396	18,071
Vocational schools for apprentices, total	12,334	152	214	805	1,276	812	593	484	276	7,722
Vocational schools for apprentices	12,331	152	214	805	1,273	812	593	484	276	7,722
Vocational schools for agriculture and forestry for apprentices	3	-	-	-	3	-	-	-	-	-
Technical and vocational schools and colleges, total	25,542	765	1,249	3,698	3,388	1,630	1,998	1,345	1,120	10,349
Intermediate technical and vocational schools, total	9,388	225	340	1,534	1,400	605	637	582	474	3,591
Crafts, technical and arts schools	2,744	42	80	484	266	117	166	106	156	1,327
Schools of business administration	5,299	155	183	901	853	345	324	362	253	1,923
Schools of management and the service industries	1,110	23	54	112	242	141	103	111	63	261
Schools for social professions	134	-	10	37	2	2	3	-	-	80
Schools for agriculture and forestry	101	5	13	-	37	-	41	3	2	-
Higher technical and vocational colleges, total	16,154	540	909	2,164	1,988	1,025	1,361	763	646	6,758
Crafts, technical and arts colleges	5,476	120	156	730	398	228	481	204	195	2,964
Colleges of business administration	9,431	383	577	1,247	1,358	707	798	491	433	3,437
Colleges of management and the service industries	1,235	37	174	181	232	90	79	67	18	357
Colleges of agriculture and forestry	12	-	2	6	-	-	3	1	-	-
Institutions for teacher training, total	471	5	9	31	24	8	25	58	8	303
Intermediate schools for teacher training	122	-	-	-	7	-	8	46	-	61
Higher colleges for teacher training	349	5	9	31	17	8	17	12	8	242

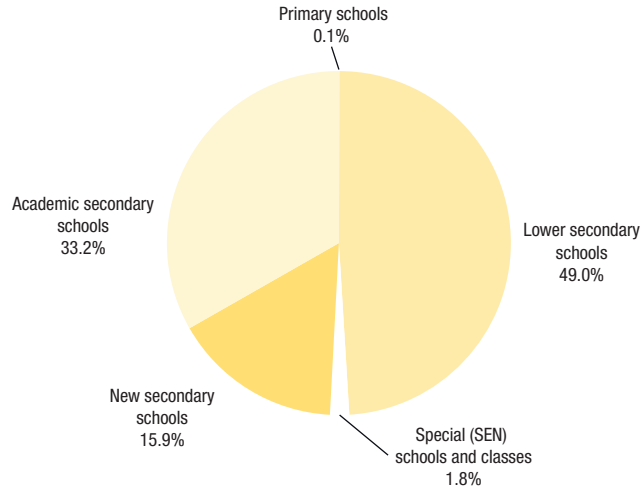
1 Schools for the medical services and schools with a statute of their own are not included.

Data are based on students' first answer in the survey category "language(s) used in every-day life" of the Education Documentation Act.

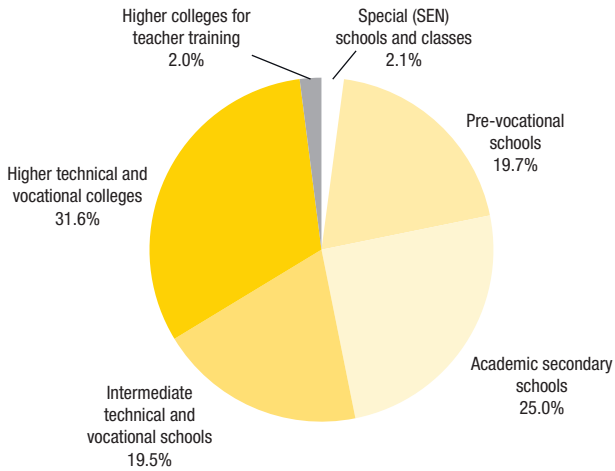
Source: Statistics Austria – Education documentation

Charts table 7:

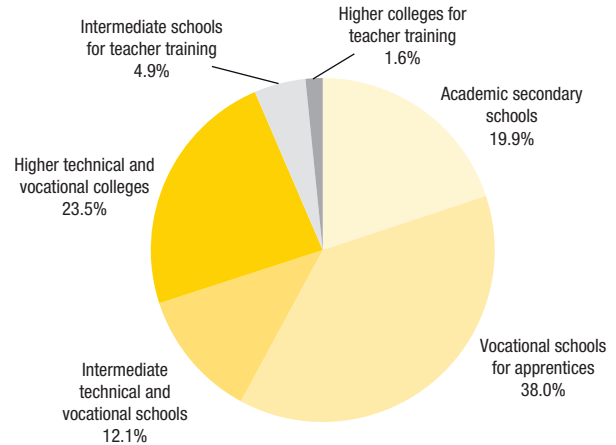
Proportion of school types at grade 5 school year 2009/10



Proportion of school types at grade 9 school year 2009/10



Proportion of school types at grade 10 school year 2009/10



**Table 7:**  
**Proportions of school types, distribution of all pupils/students by type of school, school year 2009/10**

Type of school <sup>1</sup>	Pupils/students, total	Primary schools	Lower secondary schools	Special (SEN) schools and classes	Pre-vocational schools	New secondary schools	Academic secondary schools	Vocational schools for apprentices	Intermediate technical and vocational schools	Higher technical and vocational colleges	Intermediate schools for teacher training	Higher colleges for teacher training
<b>Total</b>	<b>1,143,533</b>	<b>329,440</b>	<b>217,338</b>	<b>13,221</b>	<b>19,315</b>	<b>16,848</b>	<b>202,556</b>	<b>140,256</b>	<b>51,712</b>	<b>137,534</b>	<b>5,407</b>	<b>9,906</b>
<i>Proportion %</i>	<i>100.0</i>	<i>28.8</i>	<i>19.0</i>	<i>1.2</i>	<i>1.7</i>	<i>1.5</i>	<i>17.7</i>	<i>12.3</i>	<i>4.5</i>	<i>12.0</i>	<i>0.5</i>	<i>0.9</i>
<b>Pre-primary level</b>	<b>7,479</b>	<b>7,398</b>	-	<b>81</b>	-	-	-	-	-	-	-	-
<i>Proportion %</i>	<i>100.0</i>	<i>98.9</i>	-	<i>1.1</i>	-	-	-	-	-	-	-	-
<b>Grade 1 – 4</b>	<b>325,965</b>	<b>321,882</b>	-	<b>4,083</b>	-	-	-	-	-	-	-	-
<i>Proportion %</i>	<i>100.0</i>	<i>98.7</i>	-	<i>1.3</i>	-	-	-	-	-	-	-	-
Grade 1	82,324	81,561	-	763	-	-	-	-	-	-	-	-
<i>Proportion %</i>	<i>100.0</i>	<i>99.1</i>	-	<i>0.9</i>	-	-	-	-	-	-	-	-
Grade 4	82,069	80,760	-	1,309	-	-	-	-	-	-	-	-
<i>Proportion %</i>	<i>100.0</i>	<i>98.4</i>	-	<i>1.6</i>	-	-	-	-	-	-	-	-
<b>Grade 5 – 8</b>	<b>356,991</b>	<b>160</b>	<b>217,338</b>	<b>7,025</b>	<b>205</b>	<b>16,848</b>	<b>115,005</b>	-	<b>410</b>	-	-	-
<i>Proportion %</i>	<i>100.0</i>	<i>0.0</i>	<i>60.9</i>	<i>2.0</i>	<i>0.1</i>	<i>4.7</i>	<i>32.2</i>	-	<i>0.1</i>	-	-	-
Grade 5	83,630	49	40,958	1,507	-	13,313	27,803	-	-	-	-	-
<i>Proportion %</i>	<i>100.0</i>	<i>0.1</i>	<i>49.0</i>	<i>1.8</i>	-	<i>15.9</i>	<i>33.2</i>	-	-	-	-	-
Grade 8	93,934	25	62,730	2,049	40	8	28,672	-	410	-	-	-
<i>Proportion %</i>	<i>100.0</i>	<i>0.0</i>	<i>66.8</i>	<i>2.2</i>	<i>0.0</i>	<i>0.0</i>	<i>30.5</i>	-	<i>0.4</i>	-	-	-
<b>From grade 9</b>	<b>453,098</b>	-	-	<b>2,032</b>	<b>19,110</b>	-	<b>87,551</b>	<b>140,256</b>	<b>51,302</b>	<b>137,534</b>	<b>5,407</b>	<b>9,906</b>
<i>Proportion %</i>	<i>100.0</i>	-	-	<i>0.4</i>	<i>4.2</i>	-	<i>19.3</i>	<i>31.0</i>	<i>11.3</i>	<i>30.4</i>	<i>1.2</i>	<i>2.2</i>
Grade 9	96,954	-	-	2,032	19,110	-	24,267	-	18,897	30,682	-	1,966
<i>Proportion %</i>	<i>100.0</i>	-	-	<i>2.1</i>	<i>19.7</i>	-	<i>25.0</i>	-	<i>19.5</i>	<i>31.6</i>	-	<i>2.0</i>
Grade 10	110,296	-	-	-	-	-	21,964	41,898	13,341	25,970	5,350	1,773
<i>Proportion %</i>	<i>100.0</i>	-	-	-	-	-	<i>19.9</i>	<i>38.0</i>	<i>12.1</i>	<i>23.5</i>	<i>4.9</i>	<i>1.6</i>
Grade 12	91,094	-	-	-	-	-	19,784	41,200	2,583	26,070	-	1,457
<i>Proportion %</i>	<i>100.0</i>	-	-	-	-	-	<i>21.7</i>	<i>45.2</i>	<i>2.8</i>	<i>28.6</i>	-	<i>1.6</i>

1 Schools for the medical services and schools with a statute of their own are not included.

Source: Statistics Austria – Education documentation, BMUKK calculations

**Table 7a:**  
**Proportions of school types, distribution of male pupils/students by type of school, school year 2009/10**

Type of school <sup>1</sup>	Male pupils/students, total	Primary schools	Lower secondary schools	Special (SEN) schools and classes	Pre-vocational schools	New secondary schools	Academic secondary schools	Vocational schools for apprentices	Intermediate technical and vocational schools	Higher technical and vocational colleges	Intermediate schools for teacher training	Higher colleges for teacher training
<b>Total</b>	<b>596,670</b>	<b>170,168</b>	<b>114,041</b>	<b>8,502</b>	<b>12,167</b>	<b>8,863</b>	<b>93,027</b>	<b>91,428</b>	<b>26,651</b>	<b>67,549</b>	<b>3,792</b>	<b>482</b>
<i>Proportion %</i>	<i>100.0</i>	<i>28.5</i>	<i>19.1</i>	<i>1.4</i>	<i>2.0</i>	<i>1.5</i>	<i>15.6</i>	<i>15.3</i>	<i>4.5</i>	<i>11.3</i>	<i>0.6</i>	<i>0.1</i>
<b>Pre-primary level</b>	<b>4,701</b>	<b>4,634</b>	-	<b>67</b>	-	-	-	-	-	-	-	-
<i>Proportion %</i>	<i>100.0</i>	<i>98.6</i>	-	<i>1.4</i>	-	-	-	-	-	-	-	-
<b>Grade 1 – 4</b>	<b>168,122</b>	<b>165,455</b>	-	<b>2,667</b>	-	-	-	-	-	-	-	-
<i>Proportion %</i>	<i>100.0</i>	<i>98.4</i>	-	<i>1.6</i>	-	-	-	-	-	-	-	-
<b>Grade 1</b>	<b>42,844</b>	<b>42,342</b>	-	<b>502</b>	-	-	-	-	-	-	-	-
<i>Proportion %</i>	<i>100.0</i>	<i>98.8</i>	-	<i>1.2</i>	-	-	-	-	-	-	-	-
<b>Grade 4</b>	<b>42,189</b>	<b>41,328</b>	-	<b>861</b>	-	-	-	-	-	-	-	-
<i>Proportion %</i>	<i>100.0</i>	<i>98.0</i>	-	<i>2.0</i>	-	-	-	-	-	-	-	-
<b>Grade 5 – 8</b>	<b>183,295</b>	<b>79</b>	<b>114,041</b>	<b>4,552</b>	<b>136</b>	<b>8,863</b>	<b>55,276</b>	-	<b>348</b>	-	-	-
<i>Proportion %</i>	<i>100.0</i>	<i>0.0</i>	<i>62.2</i>	<i>2.5</i>	<i>0.1</i>	<i>4.8</i>	<i>30.2</i>	-	<i>0.2</i>	-	-	-
<b>Grade 5</b>	<b>42,872</b>	<b>22</b>	<b>21,556</b>	<b>969</b>	-	<b>7,049</b>	<b>13,276</b>	-	-	-	-	-
<i>Proportion %</i>	<i>100.0</i>	<i>0.1</i>	<i>50.3</i>	<i>2.3</i>	-	<i>16.4</i>	<i>31.0</i>	-	-	-	-	-
<b>Grade 8</b>	<b>48,170</b>	<b>7</b>	<b>32,773</b>	<b>1,302</b>	<b>25</b>	<b>3</b>	<b>13,712</b>	-	<b>348</b>	-	-	-
<i>Proportion %</i>	<i>100.0</i>	<i>0.0</i>	<i>68.0</i>	<i>2.7</i>	<i>0.1</i>	<i>0.0</i>	<i>28.5</i>	-	<i>0.7</i>	-	-	-
<b>From grade 9</b>	<b>240,552</b>	-	-	<b>1,216</b>	<b>12,031</b>	-	<b>37,751</b>	<b>91,428</b>	<b>26,303</b>	<b>67,549</b>	<b>3,792</b>	<b>482</b>
<i>Proportion %</i>	<i>100.0</i>	-	-	<i>0.5</i>	<i>5.0</i>	-	<i>15.7</i>	<i>38.0</i>	<i>10.9</i>	<i>28.1</i>	<i>1.6</i>	<i>0.2</i>
<b>Grade 9</b>	<b>47,797</b>	-	-	<b>1,216</b>	<b>12,031</b>	-	<b>10,626</b>	-	<b>8,462</b>	<b>15,372</b>	-	<b>90</b>
<i>Proportion %</i>	<i>100.0</i>	-	-	<i>2.5</i>	<i>25.2</i>	-	<i>22.2</i>	-	<i>17.7</i>	<i>32.2</i>	-	<i>0.2</i>
<b>Grade 10</b>	<b>58,116</b>	-	-	-	-	-	<b>9,456</b>	<b>26,213</b>	<b>5,920</b>	<b>12,706</b>	<b>3,742</b>	<b>79</b>
<i>Proportion %</i>	<i>100.0</i>	-	-	-	-	-	<i>16.3</i>	<i>45.1</i>	<i>10.2</i>	<i>21.9</i>	<i>6.4</i>	<i>0.1</i>
<b>Grade 12</b>	<b>48,896</b>	-	-	-	-	-	<b>8,325</b>	<b>25,758</b>	<b>2,048</b>	<b>12,721</b>	-	<b>44</b>
<i>Proportion %</i>	<i>100.0</i>	-	-	-	-	-	<i>17.0</i>	<i>52.7</i>	<i>4.2</i>	<i>26.0</i>	-	<i>0.1</i>

1 Schools for the medical services and schools with a statute of their own are not included.

Source: Statistics Austria – Education documentation, BMUKK calculations

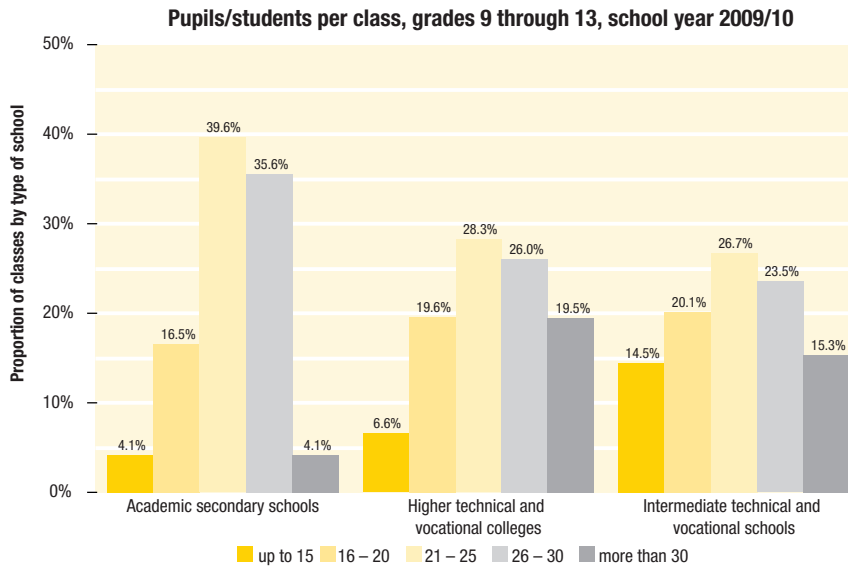
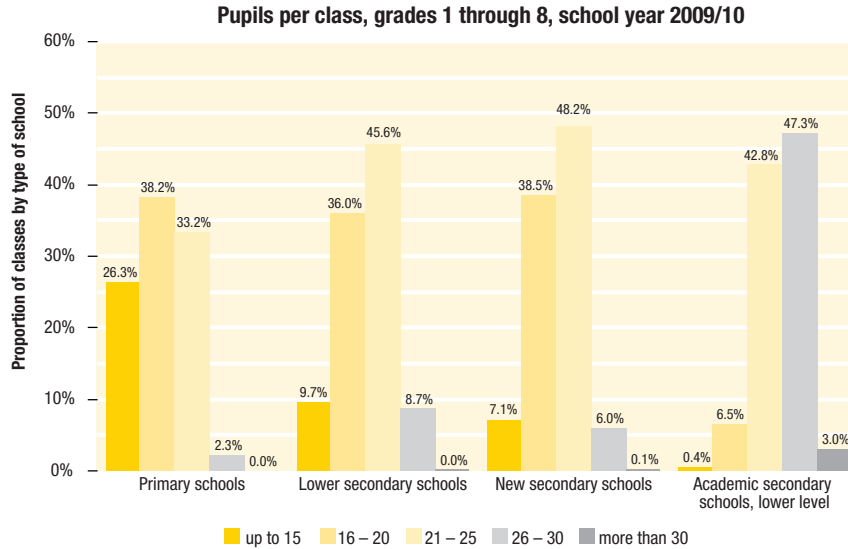
**Table 7b:**  
**Proportions of school types, distribution of female pupils/students by type of school, school year 2009/10**

Type of school <sup>1</sup>	Female pupils/students, total	Primary schools	Lower secondary schools	Special (SEN) schools and classes	Pre-vocational schools	New secondary schools	Academic secondary schools	Vocational schools for apprentices	Intermediate technical and vocational schools	Higher technical and vocational colleges	Intermediate schools for teacher training	Higher colleges for teacher training
<b>Total</b>	<b>546,863</b>	<b>159,272</b>	<b>103,297</b>	<b>4,719</b>	<b>7,148</b>	<b>7,985</b>	<b>109,529</b>	<b>48,828</b>	<b>25,061</b>	<b>69,985</b>	<b>1,615</b>	<b>9,424</b>
<i>Proportion %</i>	<i>100.0</i>	<i>29.1</i>	<i>18.9</i>	<i>0.9</i>	<i>1.3</i>	<i>1.5</i>	<i>20.0</i>	<i>8.9</i>	<i>4.6</i>	<i>12.8</i>	<i>0.3</i>	<i>1.7</i>
<b>Pre-primary level</b>	<b>2,778</b>	<b>2,764</b>	-	<b>14</b>	-	-	-	-	-	-	-	-
<i>Proportion %</i>	<i>100.0</i>	<i>99.5</i>	-	<i>0.5</i>	-	-	-	-	-	-	-	-
<b>Grade 1 – 4</b>	<b>157,843</b>	<b>156,427</b>	-	<b>1,416</b>	-	-	-	-	-	-	-	-
<i>Proportion %</i>	<i>100.0</i>	<i>99.1</i>	-	<i>0.9</i>	-	-	-	-	-	-	-	-
Grade 1	39,480	39,219	-	261	-	-	-	-	-	-	-	-
<i>Proportion %</i>	<i>100.0</i>	<i>99.3</i>	-	<i>0.7</i>	-	-	-	-	-	-	-	-
Grade 4	39,880	39,432	-	448	-	-	-	-	-	-	-	-
<i>Proportion %</i>	<i>100.0</i>	<i>98.9</i>	-	<i>1.1</i>	-	-	-	-	-	-	-	-
<b>Grade 5 – 8</b>	<b>173,696</b>	<b>81</b>	<b>103,297</b>	<b>2,473</b>	<b>69</b>	<b>7,985</b>	<b>59,729</b>	-	<b>62</b>	-	-	-
<i>Proportion %</i>	<i>100.0</i>	<i>0.0</i>	<i>59.5</i>	<i>1.4</i>	<i>0.0</i>	<i>4.6</i>	<i>34.4</i>	-	<i>0.0</i>	-	-	-
Grade 5	40,758	27	19,402	538	-	6,264	14,527	-	-	-	-	-
<i>Proportion %</i>	<i>100.0</i>	<i>0.1</i>	<i>47.6</i>	<i>1.3</i>	-	<i>15.4</i>	<i>35.6</i>	-	-	-	-	-
Grade 8	45,764	18	29,957	747	15	5	14,960	-	62	-	-	-
<i>Proportion %</i>	<i>100.0</i>	<i>0.0</i>	<i>65.5</i>	<i>1.6</i>	<i>0.0</i>	<i>0.0</i>	<i>32.7</i>	-	<i>0.1</i>	-	-	-
<b>From grade 9</b>	<b>212,546</b>	-	-	<b>816</b>	<b>7,079</b>	-	<b>49,800</b>	<b>48,828</b>	<b>24,999</b>	<b>69,985</b>	<b>1,615</b>	<b>9,424</b>
<i>Proportion %</i>	<i>100.0</i>	-	-	<i>0.4</i>	<i>3.3</i>	-	<i>23.4</i>	<i>23.0</i>	<i>11.8</i>	<i>32.9</i>	<i>0.8</i>	<i>4.4</i>
Grade 9	49,157	-	-	816	7,079	-	13,641	-	10,435	15,310	-	1,876
<i>Proportion %</i>	<i>100.0</i>	-	-	<i>1.7</i>	<i>14.4</i>	-	<i>27.7</i>	-	<i>21.2</i>	<i>31.1</i>	-	<i>3.8</i>
Grade 10	52,180	-	-	-	-	-	12,508	15,685	7,421	13,264	1,608	1,694
<i>Proportion %</i>	<i>100.0</i>	-	-	-	-	-	<i>24.0</i>	<i>30.1</i>	<i>14.2</i>	<i>25.4</i>	<i>3.1</i>	<i>3.2</i>
Grade 12	42,198	-	-	-	-	-	11,459	15,442	535	13,349	-	1,413
<i>Proportion %</i>	<i>100.0</i>	-	-	-	-	-	<i>27.2</i>	<i>36.6</i>	<i>1.3</i>	<i>31.6</i>	-	<i>3.3</i>

1 Schools for the medical services and schools with a statute of their own are not included.

Source: Statistics Austria – Education documentation, BMUKK calculations

Charts table 8:





**Table 8:**  
**Class sizes, school year 2009/10**

Type of school <sup>1</sup>	Number of classes, total	Number of classes with . . . pupils/students						Average class size
		up to 10	11 – 15	16 – 20	21 – 25	26 – 30	more than 30	
<b>All mainstream schools<sup>2</sup></b>	<b>55,201</b>	<b>2,818</b>	<b>7,225</b>	<b>16,052</b>	<b>18,928</b>	<b>8,155</b>	<b>2,023</b>	<b>20.6</b>
General schools, total	40,364	2,311	5,738	12,620	14,944	4,396	355	19.8
Compulsory schools, total	31,106	2,275	5,367	10,910	11,211	1,339	4	18.6
Primary schools	17,877	555	4,150	6,824	5,942	406	-	18.5
Lower secondary schools	10,466	50	962	3,767	4,771	912	4	20.8
Special (SEN) schools and classes	1,823	1,666	155	2	-	-	-	6.7
Pre-vocational schools	940	4	100	317	498	21	-	20.6
New secondary schools	812	3	55	313	391	49	1	20.8
Academic secondary schools, total	8,446	33	316	1,397	3,342	3,008	350	24.0
Academic secondary schools, full 8/9 year cycle	7,225	15	206	1,105	2,985	2,702	212	24.1
Academic secondary schools, lower level	4,525	1	18	292	1,937	2,139	138	25.3
Academic secondary schools, upper level	2,700	14	188	813	1,048	563	74	22.1
Academic secondary schools, separate upper level	1,047	10	88	248	324	279	98	23.1
Academic secondary schools for people in employment	142	7	20	31	22	23	39	24.0
Add-on secondary schools	32	1	2	13	11	4	1	21.0
Technical and vocational schools, total	14,462	506	1,480	3,394	3,884	3,615	1,583	22.8
Vocational schools for apprentices, total	6,661	353	944	1,852	1,715	1,642	155	21.1
Vocational schools for apprentices	6,610	351	927	1,834	1,703	1,640	155	21.1
Vocational schools for agriculture and forestry for apprentices	51	2	17	18	12	2	-	17.3
Technical and vocational schools and colleges, total	7,801	153	536	1,542	2,169	1,973	1,428	24.3
Intermediate technical and vocational schools, total	2,235	90	233	450	596	525	341	23.1
Crafts, technical and arts schools	774	48	107	170	199	133	117	22.2
Schools of business administration	500	17	55	123	134	105	66	22.5
Schools of management and the service industries	369	12	42	66	94	103	52	23.2
Schools for social professions	60	1	1	7	13	25	13	26.1
Schools for agriculture and forestry	532	12	28	84	156	159	93	24.8
Higher technical and vocational colleges, total	5,566	63	303	1,092	1,573	1,448	1,087	24.7
Crafts, technical and arts colleges	2,504	45	157	494	638	636	534	24.7
Colleges of business administration	1,803	13	99	415	586	420	270	24.0
Colleges of management and the service industries	1,129	2	43	175	340	353	216	25.3
Colleges of agriculture and forestry	130	3	4	8	9	39	67	29.5
Institutions for teacher training, total <sup>2</sup>	375	1	7	38	100	144	85	26.4
Higher colleges for teacher training	375	1	7	38	100	144	85	26.4

1 Schools for the medical services and schools with a statute of their own are not included.

2 Without schools for physical education teachers and sports instructors training (intermediate schools for teacher training).

Source: Statistics Austria – Education documentation, BMUKK calculations

**Table 9:**  
**Teaching staff by school type and federal province, school year 2009/10<sup>1</sup>**

Type of school <sup>2</sup>	Austria, total		Burgenland		Carinthia		Lower Austria		Upper Austria	
	All	of which female	All	of which female	All	of which female	All	of which female	All	of which female
<b>All mainstream schools</b>	<b>113,994</b>	<b>78,413</b>	<b>3,800</b>	<b>2,526</b>	<b>8,062</b>	<b>5,570</b>	<b>20,553</b>	<b>14,577</b>	<b>20,675</b>	<b>14,017</b>
<b>General schools, total</b>	<b>86,360</b>	<b>64,972</b>	<b>2,697</b>	<b>1,978</b>	<b>5,955</b>	<b>4,546</b>	<b>15,669</b>	<b>12,249</b>	<b>15,503</b>	<b>11,639</b>
Compulsory schools, total	66,212	52,691	2,106	1,622	4,693	3,792	12,527	10,355	12,674	10,018
Primary schools	29,369	26,467	953	820	2,137	1,891	5,416	5,047	5,498	4,969
Lower secondary schools	28,551	19,915	973	679	2,018	1,480	5,467	4,003	6,070	4,280
Special (SEN) schools and classes	5,910	5,041	108	90	420	354	1,149	1,025	569	477
Pre-vocational schools	2,382	1,268	72	33	118	67	495	280	537	292
Academic secondary schools	20,148	12,281	591	356	1,262	754	3,142	1,894	2,829	1,621
<b>Technical and vocational schools, total</b>	<b>26,176</b>	<b>12,256</b>	<b>1,053</b>	<b>512</b>	<b>2,046</b>	<b>970</b>	<b>4,620</b>	<b>2,124</b>	<b>4,936</b>	<b>2,186</b>
Vocational schools for apprentices <sup>3</sup>	4,982	1,649	112	26	356	104	693	225	994	317
<b>Technical and vocational schools and colleges, total</b>	<b>21,194</b>	<b>10,607</b>	<b>941</b>	<b>486</b>	<b>1,690</b>	<b>866</b>	<b>3,927</b>	<b>1,899</b>	<b>3,942</b>	<b>1,869</b>
Technical and crafts schools and colleges (in a narrower sense) <sup>4</sup>	8,024	1,932	305	62	582	142	1,390	266	1,597	350
Schools and colleges of tourism	1,241	653	82	58	50	21	208	109	188	86
Schools and colleges of business administration	5,411	3,400	332	208	416	269	941	603	881	527
Schools and colleges of management and the service industries	4,268	3,359	197	150	400	299	872	672	819	643
Schools and colleges for social professions	186	152	-	-	16	13	92	76	13	9
Schools and colleges for agriculture and forestry <sup>5</sup>	2,064	1,111	25	8	226	122	424	173	444	254
<b>Institutions for teacher training, total</b>	<b>1,458</b>	<b>1,185</b>	<b>50</b>	<b>36</b>	<b>61</b>	<b>54</b>	<b>264</b>	<b>204</b>	<b>236</b>	<b>192</b>
Higher colleges for teacher training	1,458	1,185	50	36	61	54	264	204	236	192

1 Not including staff on maternity or educational leave; including part-time staff ("head count").

In comparisons with previous years please note that figures published up to and including the school year 2007/08 included staff on leave.

2 Schools for the medical services, schools for physical education teachers and sports instructors training (intermediate schools for teacher training), as well as schools with a statute of their own are not included.

3 Not including teachers at vocational schools for agriculture and forestry for apprentices.

4 Including teachers at schools of clothing and crafts.

5 Including teachers at vocational schools for agriculture and forestry for apprentices.

Source: Statistics Austria, BMUKK

**Table 9 (continued):  
Teaching staff by school type and federal province, school year 2009/10<sup>1</sup>**

Type of school <sup>2</sup>	Salzburg		Styria		Tyrol		Vorarlberg		Vienna	
	All	of which female	All	of which female	All	of which female	All	of which female	All	of which female
<b>All mainstream schools</b>	<b>8,133</b>	<b>5,464</b>	<b>15,091</b>	<b>10,437</b>	<b>10,373</b>	<b>6,516</b>	<b>5,876</b>	<b>3,701</b>	<b>21,431</b>	<b>15,605</b>
<b>General schools, total</b>	<b>5,980</b>	<b>4,418</b>	<b>11,351</b>	<b>8,533</b>	<b>7,854</b>	<b>5,327</b>	<b>4,612</b>	<b>3,159</b>	<b>16,739</b>	<b>13,123</b>
Compulsory schools, total	4,607	3,608	8,613	6,818	6,427	4,566	3,798	2,767	10,767	9,145
Primary schools	1,940	1,733	3,940	3,601	2,754	2,279	1,689	1,422	5,042	4,705
Lower secondary schools	2,050	1,422	4,044	2,770	2,948	1,804	1,599	972	3,382	2,505
Special (SEN) schools and classes	435	358	321	276	447	355	379	319	2,082	1,787
Pre-vocational schools	182	95	308	171	278	128	131	54	261	148
Academic secondary schools	1,373	810	2,738	1,715	1,427	761	814	392	5,972	3,978
<b>Technical and vocational schools, total</b>	<b>2,073</b>	<b>983</b>	<b>3,516</b>	<b>1,723</b>	<b>2,366</b>	<b>1,069</b>	<b>1,206</b>	<b>497</b>	<b>4,360</b>	<b>2,192</b>
Vocational schools for apprentices <sup>3</sup>	384	147	726	220	532	165	280	67	905	378
<b>Technical and vocational schools and colleges, total</b>	<b>1,689</b>	<b>836</b>	<b>2,790</b>	<b>1,503</b>	<b>1,834</b>	<b>904</b>	<b>926</b>	<b>430</b>	<b>3,455</b>	<b>1,814</b>
Technical and crafts schools and colleges (in a narrower sense) <sup>4</sup>	531	118	976	234	611	135	321	61	1,711	564
Schools and colleges of tourism	141	65	54	20	195	107	72	38	251	149
Schools and colleges of business administration	411	252	684	442	506	276	292	159	948	664
Schools and colleges of management and the service industries	422	322	547	453	322	263	201	156	488	401
Schools and colleges for social professions	9	7	26	21	-	-	-	-	30	26
Schools and colleges for agriculture and forestry <sup>5</sup>	175	72	503	333	200	123	40	16	27	10
<b>Institutions for teacher training, total</b>	<b>80</b>	<b>63</b>	<b>224</b>	<b>181</b>	<b>153</b>	<b>120</b>	<b>58</b>	<b>45</b>	<b>332</b>	<b>290</b>
Higher colleges for teacher training	80	63	224	181	153	120	58	45	332	290

1 Not including staff on maternity or educational leave; including part-time staff ("head count").

In comparisons with previous years please note that figures published up to and including the school year 2007/08 included staff on leave.

2 Schools for the medical services, schools for physical education teachers and sports instructors training (intermediate schools for teacher training), as well as schools with a statute of their own are not included.

3 Not including teachers at vocational schools for agriculture and forestry for apprentices.

4 Including teachers at schools of clothing and crafts.

5 Including teachers at vocational schools for agriculture and forestry for apprentices.

Source: Statistics Austria, BMUKK

**Table 10:**  
**Recipients of student support and/or accommodation grants by support category, type of school and federal province, school year 2008/09**

Support category / Type of school <sup>1</sup>	Austria, total	Burgenland	Carinthia	Lower Austria	Upper Austria	Salzburg	Styria	Tyrol	Vorarlberg	Vienna
<b>All support categories and school types</b>	<b>31,158</b>	<b>916</b>	<b>2,897</b>	<b>6,637</b>	<b>6,312</b>	<b>2,293</b>	<b>5,011</b>	<b>3,488</b>	<b>821</b>	<b>2,783</b>
<b>Student support</b>	<b>19,410</b>	<b>709</b>	<b>1,772</b>	<b>3,935</b>	<b>3,773</b>	<b>1,036</b>	<b>3,021</b>	<b>1,941</b>	<b>611</b>	<b>2,612</b>
Pre-vocational schools	2	-	-	1	-	-	-	-	-	1
Academic secondary schools	4,235	116	320	605	658	208	709	415	118	1,086
Technical and vocational schools and colleges	14,142	558	1,415	3,104	2,894	784	2,102	1,436	469	1,380
Institutions for teacher training	935	35	37	193	221	44	189	76	24	116
Schools for paramedical training	96	-	-	32	-	-	21	14	-	29
<b>Accommodation grant</b>	<b>3,288</b>	<b>53</b>	<b>306</b>	<b>689</b>	<b>669</b>	<b>331</b>	<b>664</b>	<b>523</b>	<b>46</b>	<b>7</b>
Pre-vocational schools	-	-	-	-	-	-	-	-	-	-
Academic secondary schools	67	-	3	11	5	18	11	15	2	2
Technical and vocational schools and colleges	3,169	44	299	662	658	313	647	497	44	5
Institutions for teacher training	51	9	4	15	6	-	6	11	-	-
Schools for paramedical training	1	-	-	1	-	-	-	-	-	-
<b>Student support and accommodation grant combined</b>	<b>8,234</b>	<b>154</b>	<b>815</b>	<b>1,957</b>	<b>1,724</b>	<b>910</b>	<b>1,326</b>	<b>1,020</b>	<b>164</b>	<b>164</b>
Pre-vocational schools	-	-	-	-	-	-	-	-	-	-
Academic secondary schools	283	10	14	44	32	41	52	71	5	14
Technical and vocational schools and colleges	7,642	108	778	1,834	1,650	857	1,239	887	159	130
Institutions for teacher training	274	36	23	66	42	12	28	57	-	10
Schools for paramedical training	35	-	-	13	-	-	7	5	-	10
<b>Special student support<sup>2</sup></b>	<b>226</b>	<b>-</b>	<b>4</b>	<b>56</b>	<b>146</b>	<b>16</b>	<b>-</b>	<b>4</b>	<b>-</b>	<b>-</b>
Academic secondary schools	8	-	-	-	-	8	-	-	-	-
Technical and vocational schools and colleges	218	-	4	56	146	8	-	4	-	-

1 Including types for people in employment.

2 Only automatically processed applications are shown here.

Source: BMUKK

**Table 11:**  
**Recipients of student support and/or accommodation grants: average (annual) amount of support in €**  
**by support category, type of school and federal province, school year 2008/09**

Support category / Type of school <sup>1</sup>	Austria, total	Burgen- land	Carinthia	Lower Austria	Upper Austria	Salz- burg	Styria	Tyrol	Vorarl- berg	Vienna
<b>Average support, all categories</b>	<b>1,246</b>	<b>1,064</b>	<b>1,306</b>	<b>1,289</b>	<b>1,234</b>	<b>1,410</b>	<b>1,268</b>	<b>1,244</b>	<b>1,131</b>	<b>1,037</b>
<b>Student support</b>	<b>927</b>	<b>893</b>	<b>927</b>	<b>941</b>	<b>914</b>	<b>931</b>	<b>924</b>	<b>878</b>	<b>947</b>	<b>965</b>
Pre-vocational schools	.	-	-	.	-	-	-	-	-	.
Academic secondary schools	953	937	928	992	944	913	950	872	940	987
Technical and vocational schools and colleges	917	880	926	929	910	930	912	878	857	938
Institutions for teacher training	918	959	936	960	882	1,016	899	847	770	969
Schools for paramedical training	1,197	-	-	1,082	-	-	1,345	1,312	-	1,166
<b>Accommodation grant</b>	<b>1,223</b>	<b>1,165</b>	<b>1,251</b>	<b>1,194</b>	<b>1,230</b>	<b>1,242</b>	<b>1,228</b>	<b>1,228</b>	<b>1,195</b>	<b>1,325</b>
Pre-vocational schools	-	-	-	-	-	-	-	-	-	-
Academic secondary schools	1,177	-	1,374	1,114	1,190	1,064	1,237	975	.	.
Technical and vocational schools and colleges	1,227	1,214	1,250	1,194	1,231	1,254	1,226	1,242	1,198	1,279
Institutions for teacher training	1,219	945	1,230	1,317	1,228	1,485	1,379	1,193	-	-
Schools for paramedical training	.	-	-	.	-	-	-	-	-	-
<b>Student support and accommodation grant combined</b>	<b>2,202</b>	<b>1,971</b>	<b>2,318</b>	<b>2,248</b>	<b>2,131</b>	<b>2,229</b>	<b>2,244</b>	<b>2,077</b>	<b>2,170</b>	<b>2,375</b>
Pre-vocational schools	-	-	-	-	-	-	-	-	-	-
Academic secondary schools	2,163	2,083	2,553	2,039	2,291	2,104	2,218	2,157	2,615	1,938
Technical and vocational schools and colleges	2,205	1,990	2,319	2,251	2,129	2,240	2,248	2,067	2,166	2,376
Institutions for teacher training	2,141	1,878	2,159	2,399	2,123	1,925	1,826	2,121	-	2,467
Schools for paramedical training	2,436	-	-	1,947	-	-	3,092	2,040	-	2,711
<b>Special student support<sup>2</sup></b>	<b>2,001</b>	<b>-</b>	<b>2,693</b>	<b>3,640</b>	<b>1,203</b>	<b>2,975</b>	<b>-</b>	<b>2,398</b>	<b>-</b>	<b>-</b>
Academic secondary schools	3,242	-	-	-	-	3,242	-	-	-	-
Technical and vocational schools and colleges	1,954	-	2,693	3,640	1,203	2,707	-	2,398	-	-

1 Including types for people in employment.

2 Calculation is based on automatically processed applications only.

Source: BMUKK

**Table 12:**  
**Students in graduation classes of upper secondary schools by school type and gender, graduation years 1990, 2000, 2005, 2009 and 2010<sup>1</sup>**

Type of school		Graduation year				
		2010	2009	2005	2000	1990
All mainstream schools	All	43,688	42,781	38,802	37,796	31,744
	Females	24,420	24,098	21,695	21,269	16,651
	Males	19,268	18,683	17,107	16,527	15,093
Academic secondary schools, total	All	19,485	19,610	16,113	17,255	15,473
	Females	11,278	11,451	9,504	10,131	8,305
	Males	8,207	8,159	6,609	7,124	7,168
Academic secondary schools, full 8/9 year cycle <sup>2</sup>	All	13,830	13,660	11,348	12,348	11,024
	Females	7,779	7,756	6,557	6,980	5,820
	Males	6,051	5,904	4,791	5,368	5,204
Academic secondary schools, separate upper level	All	4,930	5,001	4,395	4,517	4,087
	Females	3,117	3,169	2,729	2,944	2,357
	Males	1,813	1,832	1,666	1,573	1,730
Academic secondary schools (special sub-types) <sup>3</sup>	All	725	949	370	390	362
	Females	382	526	218	207	128
	Males	343	423	152	183	234
Technical and vocational colleges, total <sup>4</sup>	All	22,780	21,649	21,322	18,955	15,411
	Females	11,769	11,166	10,846	9,599	7,505
	Males	11,011	10,483	10,476	9,356	7,906
Technical and crafts colleges <sup>5</sup>	All	9,918	9,511	9,648	7,794	6,451
	Females	2,418	2,268	2,219	1,627	1,108
	Males	7,500	7,243	7,429	6,167	5,343
Colleges of business administration	All	7,113	6,573	6,843	6,741	6,040
	Females	4,430	4,114	4,458	4,103	3,849
	Males	2,683	2,459	2,385	2,638	2,191
Colleges of management and service industries	All	4,992	4,854	4,158	3,796	2,402
	Females	4,592	4,484	3,904	3,599	2,390
	Males	400	370	254	197	12
Colleges of agriculture and forestry	All	757	711	673	624	518
	Females	329	300	265	270	158
	Males	428	411	408	354	360
Higher colleges for teacher training <sup>6</sup>	All	1,423	1,522	1,367	1,586	860
	Females	1,373	1,481	1,345	1,539	841
	Males	50	41	22	47	19

1 Austrian and foreign students in graduation classes of secondary schools with "Matura" secondary school leaving certificate, without VET courses; data as at October of previous year. 2005: students in graduation classes, preliminary figures.

2 Academic secondary schools and secondary schools of management and the service industries.

3 Add-on academic secondary schools and academic secondary schools for people in employment.

4 Including special types (for people in employment, add-on courses).

5 Including colleges of tourism and colleges of the clothing trades.

6 Nursery teacher training institutions and institutions for social pedagogy.

Source: Statistics Austria – Education documentation, BMUKK calculations

**Table 13:**  
**University Colleges of Teacher Education: students and new entrants, winter term 2009/10**

Study programme / institution	Winter term 2009/10					
	Students			of which new entrants		
	all	females	males	all	females	males
<b>Teacher training at public and private University Colleges of Teacher Education and in private study programmes, total</b>	<b>9,521</b>	<b>7,427</b>	<b>2,094</b>	<b>4,067</b>	<b>3,110</b>	<b>957</b>
Teacher training for primary school teachers	3,897	3,548	349	1,832	1,658	174
Teacher training for lower secondary school teachers	2,242	1,555	687	1,020	677	343
Teacher training for special (SEN) school teachers	1,036	930	106	331	298	33
Teacher training for pre-vocational school teachers	37	20	17	17	10	7
Teacher training for teachers at vocational schools for apprentices	703	270	433	301	124	177
Teacher training for an occupation-specific instruction at VET S&C	853	486	367	367	189	178
Teacher training for religious education at compulsory schools	753	618	135	199	154	45
<b>Public University Colleges of Teacher Education, total</b>	<b>6,186</b>	<b>4,561</b>	<b>1,625</b>	<b>2,789</b>	<b>2,029</b>	<b>760</b>
University College of Teacher Education Carinthia	302	241	61	135	101	34
University College of Teacher Education Lower Austria	467	402	65	189	162	27
University College of Teacher Education Upper Austria	943	645	298	499	340	159
University College of Teacher Education Salzburg	613	533	80	283	242	41
University College of Teacher Education Styria	1,149	759	390	488	325	163
University College of Teacher Education Tyrol	617	438	179	274	197	77
University College of Teacher Education Vorarlberg	329	275	54	107	90	17
University College of Teacher Education Vienna	1,504	1,100	404	691	502	189
Vienna University College of TE – agriculture and environment	262	168	94	123	70	53
<b>Private University Colleges of TE and study programmes, total</b>	<b>3,335</b>	<b>2,866</b>	<b>469</b>	<b>1,278</b>	<b>1,081</b>	<b>197</b>
<b>Private University Colleges of Teacher Education</b>	<b>3,099</b>	<b>2,694</b>	<b>405</b>	<b>1,224</b>	<b>1,040</b>	<b>184</b>
University College of Teacher Education Burgenland Foundation	148	137	11	62	57	5
University College of Teacher Education of the Diocese of Linz	887	783	104	364	316	48
University College of TE of the Diocese of Graz-Seckau Foundation	277	259	18	104	99	5
University College of TE – Diocese of Innsbruck Foundation	320	259	61	122	95	27
University College of TE – Archdiocese of Vienna Foundation	1,467	1,256	211	572	473	99
<b>Private study programmes for teacher training</b>	<b>236</b>	<b>172</b>	<b>64</b>	<b>54</b>	<b>41</b>	<b>13</b>
Religious education (Catholic) at compulsory schools, Klagenfurt	40	34	6	16	13	3
Religious education (Jewish) at compulsory schools, Vienna	59	54	5	13	12	1
Religious education (Islamic) at compulsory schools, Vienna	137	84	53	25	16	9

VET S&C – vocational education and training schools and colleges.

TE – Teacher Education.

Source: Statistics Austria – Education documentation

**Table 14:**  
**University Colleges of Teacher Education: new entrants and graduates, academic year 2008/09**

Study programme / institution	Academic year 2008/09					
	New entrants			Graduates		
	all	females	males	all	females	males
<b>Teacher training at public and private University Colleges of Teacher Education and in private study programmes, total</b>	<b>3,343</b>	<b>2,541</b>	<b>802</b>	<b>2,257</b>	<b>1,887</b>	<b>370</b>
Teacher training for primary school teachers	1,229	1,121	108	978	918	60
Teacher training for lower secondary school teachers	687	491	196	584	426	158
Teacher training for special (SEN) school teachers	477	423	54	294	269	25
Teacher training for pre-vocational school teachers	34	17	17	12	6	6
Teacher training for teachers at vocational schools for apprentices	379	145	234	94	34	60
Teacher training for an occupation-specific instruction at VET S&C	312	174	138	173	126	47
Teacher training for religious education at compulsory schools	225	170	55	122	108	14
<b>Public University Colleges of Teacher Education, total</b>	<b>2,184</b>	<b>1,554</b>	<b>630</b>	<b>1,596</b>	<b>1,301</b>	<b>295</b>
University College of Teacher Education Carinthia	118	99	19	52	43	9
University College of Teacher Education Lower Austria	171	151	20	150	130	20
University College of Teacher Education Upper Austria	282	163	119	278	219	59
University College of Teacher Education Salzburg	184	161	23	210	177	33
University College of Teacher Education Styria	342	225	117	268	223	45
University College of Teacher Education Tyrol	271	169	102	234	179	55
University College of Teacher Education Vorarlberg	120	99	21	129	117	12
University College of Teacher Education Vienna	588	409	179	232	184	48
Vienna University College of TE – agriculture and environment	108	78	30	43	29	14
<b>Private University Colleges of TE and study programmes, total</b>	<b>1,159</b>	<b>987</b>	<b>172</b>	<b>661</b>	<b>586</b>	<b>75</b>
<b>Private University Colleges of Teacher Education</b>	<b>1,090</b>	<b>938</b>	<b>152</b>	<b>630</b>	<b>559</b>	<b>71</b>
University College of Teacher Education Burgenland Foundation	71	69	2	32	31	1
University College of Teacher Education of the Diocese of Linz	257	221	36	179	156	23
University College of TE of the Diocese of Graz-Seckau Foundation	139	118	21	60	53	7
University College of TE – Diocese of Innsbruck Foundation	104	88	16	78	65	13
University College of TE – Archdiocese of Vienna Foundation	519	442	77	281	254	27
<b>Private study programmes for teacher training</b>	<b>69</b>	<b>49</b>	<b>20</b>	<b>31</b>	<b>27</b>	<b>4</b>
Religious education (Catholic) at compulsory schools, Klagenfurt	11	9	2	6	6	-
Religious education (Jewish) at compulsory schools, Vienna	30	26	4	10	10	-
Religious education (Islamic) at compulsory schools, Vienna	28	14	14	15	11	4

VET S&C – vocational education and training schools and colleges.

TE – Teacher Education.

Source: Statistics Austria – Education documentation



**Table 15:**  
**University Colleges of Teacher Education: Students in further and continuing education,**  
**winter term 2009/10 and academic year 2008/09**

Type of further and continuing education <sup>1</sup> / Higher education institution	Students in further and continuing education					
	winter term 2009/10			academic year 2008/09 <sup>2</sup>		
	all	females	males	all	females	males
<b>Further and continuing education courses, total</b>	<b>8,135</b>	<b>6,538</b>	<b>1,597</b>	<b>12,170</b>	<b>9,923</b>	<b>2,247</b>
University courses with master degree (at least 120 ECTS credits)	243	179	64	311	237	74
University courses with academic title (at least 60 ECTS credits)	633	528	105	1,115	914	201
Courses for additional teaching qualification (at least 30 ECTS credits)	540	367	173	992	725	267
Courses (30 to less than 60 ECTS credits)	1,288	1,007	281	1,947	1,580	367
Courses (6 to less than 30 ECTS credits)	5,431	4,457	974	7,805	6,467	1,338
<b>Public University Colleges of Teacher Education, total</b>	<b>6,254</b>	<b>4,890</b>	<b>1,364</b>	<b>8,959</b>	<b>7,103</b>	<b>1,856</b>
University College of Teacher Education Carinthia	492	442	50	662	620	42
University College of Teacher Education Lower Austria	518	429	89	698	605	93
University College of Teacher Education Upper Austria	1,652	1,323	329	3,029	2,387	642
University College of Teacher Education Salzburg	985	804	181	798	648	150
University College of Teacher Education Styria	1,447	1,106	341	2,242	1,785	457
University College of Teacher Education Tyrol	615	461	154	638	468	170
University College of Teacher Education Vorarlberg	220	171	49	341	285	56
University College of Teacher Education Vienna	291	137	154	515	301	214
Vienna University College of TE – agriculture and environment	34	17	17	36	4	32
<b>Private University Colleges of Teacher Education</b>	<b>1,832</b>	<b>1,601</b>	<b>231</b>	<b>3,164</b>	<b>2,777</b>	<b>387</b>
University College of Teacher Education Burgenland Foundation	215	199	16	278	251	27
University College of Teacher Education of the Diocese of Linz	427	343	84	358	257	101
University College of TE of the Diocese of Graz-Seckau Foundation	436	410	26	1,156	1,075	81
University College of TE – Diocese of Innsbruck Foundation	141	104	37	158	114	44
University College of TE – Archdiocese of Vienna Foundation	613	545	68	1,214	1,080	134
<b>Study programmes from other private education providers, total</b>	<b>49</b>	<b>47</b>	<b>2</b>	<b>47</b>	<b>43</b>	<b>4</b>
Private university course of the Diocese of Gurk, Klagenfurt	49	47	2	47	43	4
Private university course of the Islamic Religious Community in Austria	-	-	-	-	-	-

1 Not including courses with less than 6 ECTS credits.

2 Students in winter term 2008/09 and summer term 2009.

ECTS – European Credit Transfer and Accumulation System.

Source: Statistics Austria – Education documentation

**Table 16:**  
**Reference levels of European average performance (*Benchmarks*) in education and training, 2009**

#### Early childhood education

	EU target 2020	Ø EU-27	Austria	Females	Males	EU rank
	<i>min. 95%</i>	92.3%	90.3%	90.9%	89.8%	15 (of 27)

**Note:** By 2020, the EU average should be at least 95%. Data refer to the proportion of 4 to 6 year old children who attend educational institutions before starting school, as compared to the same age population. Data 2008

#### Low achievers in basic skills

	EU target 2020	Ø EU-27	Austria	Females	Males	EU rank
Reading	<i>max. 15%</i>	24.1%	21.5%	16.2%	29.2%	14 (of 25)
Mathematics	<i>max. 15%</i>	24.0%	20.0%	22.7%	17.4%	13 (of 25)
Science	<i>max. 15%</i>	20.2%	16.3%	17.5%	15.2%	9 (of 25)

**Note:** By 2020, the EU average should have decreased to max. 15%. Data refer to the percentage of 15 year old pupils who attain at most proficiency level 1 on the respective PISA scale. Data from PISA 2006

The table does not include data from PISA 2009 because EU averages were not available when this Guide went to press.  
 Austria's data from PISA 2009: reading 27.6%; mathematics 23.2%; science 20.9%

#### Early leavers from education and training

	EU target 2020	Ø EU-27	Austria	Females	Males	EU rank
	<i>max. 10%</i>	14.4%	8.7%	8.9%	8.5%	7 (of 27)

**Note:** By 2020, the EU average should be less than 10%. Data refer to the proportion of 18 to 24 year olds who have not completed upper secondary education and who are not in education or training. Data 2009

#### Tertiary level attainment (age group of 30 to 34 year olds)

	EU target 2020	Ø EU-27	Austria	Females	Males	EU rank
	<i>min. 40%</i>	32.3%	23.5%	24.0%	23.0%	18 (of 27)

**Note:** By 2020, the EU average should be increased to at least 40%. Data refer to the proportion of 30 to 34 year olds with completed tertiary education (ISCED levels 5 and 6) as compared to the same age resident population. Data 2009

#### Adult participation in lifelong learning

	EU target 2020	Ø EU-27	Austria	Females	Males	EU rank
	<i>min. 15%</i>	9.2%	13.8%	14.7%	12.8%	7 (of 27)

**Note:** By 2020, the EU average level should be at least 15%. Data refer to the 25 to 64 year old population participating in formal or non-formal education during the 4 weeks prior to the survey. Data 2009

Source: Statistics Austria, European Commission, OECD

**Table 17:**  
**Adult education: number of events and participation, calendar year 2009 and academic year 2008/09, respectively**

		Short events 1 – 4 TU <sup>1</sup>	Courses	Total	Special courses / events
Platform Educational Institutions in Austria	Events	4,850	10,643	15,493	2,274
	Participation	113,959	247,774	361,733	30,400
"bfi" Vocational Training Institute	Events	n.a.	19,805	19,805	52
	Participation	n.a.	225,306	225,306	5,769
Austrian Library Association	Events <sup>2</sup>	25,438	89	25,527	-
	Participation <sup>3</sup>	n.a.	2,384	2,384	n.a.
Catholic Adult Education Institutions	Events	18,437	8,998	27,435	3,645
	Participation	432,960	144,479	577,439	327,259
Institute for Adult Education in Rural Areas	Events	6,617	5,501	12,118	818
	Participation	166,192	113,949	280,141	129,939
Federation of Austrian Educational Associations	Events	9,469	4,127	13,596	8,114
	Participation	223,345	96,694	320,039	748,693
Austrian National Economy Society	Events	1,212	1,546	2,758	153
	Participation	28,388	27,307	55,695	8,220
Austrian Trade Union Education Network	Events	3,879	3,854	7,733	1,305
	Participation	91,271	54,726	145,997	109,620
Association of Austrian Adult Education Centres	Events	4,463	47,695	52,158	2,976
	Participation	133,907	461,758	595,665	89,272
Institute for Economic Promotion of the Austrian Federal Economic Chamber	Events	1,351	29,148	30,499	n.a.
	Participation	23,900	317,589	341,489	n.a.
Total	Events	75,716	131,406	207,122	19,337
	Participation	1,213,922	1,691,966	2,905,888	1,449,172

1 TU = Teaching unit.

2 Borrowings of books and other media: 20.737.695

3 Visits: 10.262.834

n.a. – Not available.

Source: Austrian Conference on Adult Education (KEBÖ)

**Table 18:**  
**Adults' participation in lifelong learning: Population of 15 years and older by participation in training and continuing education; type, purpose and hours by age and gender, 2009<sup>1</sup>**

Age (years)	Total			of which in education / training (formal and/or non-formal) <sup>2</sup>			Courses attended			Average number of hours within four weeks prior to survey <sup>3</sup>		EU structural indicator "lifelong learning" <sup>4</sup>
	Thousands	Thousands	%	total	of which predominantly job-related	of which predominantly private	total	of which in predominantly job-related courses				
									Thousands	Hours	%	
<b>All</b>												
<b>Total</b>	<b>6,986.4</b>	<b>1,310.8</b>	<b>18.8</b>	<b>668.8</b>	<b>347.7</b>	<b>321.1</b>	<b>18.5</b>	<b>24.2</b>	<b>13.8</b>			
15 – 19	487.5	423.5	86.9	70.6	17.0	53.6	19.6	35.6	.			
20 – 29	1,053.2	361.8	34.4	138.7	77.4	61.3	24.0	31.5	27.0			
30 – 39	1,145.4	191.0	16.7	146.6	88.0	58.6	20.1	25.1	16.6			
40 – 49	1,393.6	176.5	12.7	161.3	101.3	60.0	16.5	19.9	12.6			
50 – 59	1,063.8	95.1	8.9	91.4	54.9	36.5	15.0	18.1	8.9			
60 and older	1,842.9	62.9	3.4	60.2	9.1	51.1	10.9	18.0	5.4			
25 – 64	4,596.3	637.7	13.9	494.4	292.1	202.4	17.9	22.4	13.8			
<b>Females</b>												
<b>Females total</b>	<b>3,615.7</b>	<b>690.0</b>	<b>19.1</b>	<b>369.6</b>	<b>169.5</b>	<b>200.1</b>	<b>16.5</b>	<b>23.3</b>	<b>14.7</b>			
15 – 19	243.7	210.7	86.5	35.9	9.3	26.5	18.4	35.0	.			
20 – 29	529.3	185.2	35.0	72.7	38.4	34.2	21.6	29.8	26.8			
30 – 39	575.1	103.6	18.0	81.9	44.8	37.1	18.0	23.4	17.9			
40 – 49	690.4	97.6	14.1	89.6	50.0	39.5	15.0	19.0	14.1			
50 – 59	539.2	52.8	9.8	50.8	24.2	26.6	13.5	17.8	9.8			
60 and older	1,038.0	40.1	3.9	38.8	(2.7)	36.1	9.8	18.8	6.1			
25 – 64	2,308.7	342.7	14.8	273.6	141.1	132.6	16.1	21.5	14.7			
<b>Males</b>												
<b>Males total</b>	<b>3,370.7</b>	<b>620.8</b>	<b>18.4</b>	<b>299.3</b>	<b>178.3</b>	<b>121.0</b>	<b>20.9</b>	<b>25.1</b>	<b>12.8</b>			
15 – 19	243.8	212.8	87.3	34.8	7.7	27.1	20.8	36.4	.			
20 – 29	523.9	176.6	33.7	66.1	38.9	27.1	26.7	33.2	27.2			
30 – 39	570.3	87.4	15.3	64.7	43.2	21.5	22.9	26.9	15.2			
40 – 49	703.2	79.0	11.2	71.7	51.3	20.4	18.3	20.7	11.2			
50 – 59	524.6	42.2	8.1	40.6	30.7	9.9	16.9	18.3	8.0			
60 and older	804.9	22.7	2.8	21.4	6.4	15.0	13.0	17.6	4.6			
25 – 64	2,287.6	295.0	12.9	220.8	151.0	69.8	20.2	23.3	12.8			

1 Extrapolated figures. On account of the sample error, values less than 6,000 are inaccurate and cannot be interpreted statistically; they are put in parentheses.

2 Adults' participation in training and continuing education within four weeks prior to the survey;  
 formal education: school (including apprenticeship) and higher education system; non-formal education: courses and training.

3 Refers to participants.

4 Percentage of the population aged 25 to 64 years participating in training and continuing education programmes (not including persons who interrupt attendance at school or higher education institution on account of holidays).

Source: Statistics Austria – Microcensus / Labour Force Survey

**Table 19:**  
**Labour force aged 25 to 64 years participating in continuing education by federal province and purpose of continuing education, 2009<sup>1</sup>**

Participation in continuing education	Austria, total	Burgen-land	Carinthia	Lower Austria	Upper Austria	Salz-burg	Styria	Tyrol	Vorarl-berg	Vienna
	Thousands									
<b>All</b>	3,462.1	117.9	221.8	669.0	587.1	229.0	491.2	298.7	153.6	693.8
<b>Numbers</b>	417.3	11.7	23.4	74.7	71.1	27.7	57.9	34.8	21.0	94.9
<b>%</b>	12.1%	10.0%	10.5%	11.2%	12.1%	12.1%	11.8%	11.6%	13.6%	13.7%
predominantly job-related	258.3	8.2	16.2	47.9	45.5	17.7	37.5	22.1	12.6	50.6
predominantly private	159.0	3.5	7.2	26.9	25.7	10.0	20.5	12.7	8.3	44.3
<b>Females</b>	1,607.2	53.3	100.7	313.4	266.5	107.7	227.1	137.3	69.4	331.9
<b>Numbers</b>	221.9	5.8	12.3	38.5	35.2	15.0	30.3	17.9	10.3	56.5
<b>%</b>	13.8%	10.9%	12.2%	12.3%	13.2%	14.0%	13.3%	13.1%	14.9%	17.0%
predominantly job-related	122.8	3.8	7.9	21.3	19.2	8.7	17.6	10.2	5.2	28.8
predominantly private	99.1	2.0	4.4	17.2	16.0	6.4	12.6	7.7	5.1	27.7
<b>Males</b>	1,855.0	64.6	121.2	355.6	320.6	121.3	264.1	161.4	84.3	361.9
<b>Numbers</b>	195.4	5.9	11.1	36.3	35.9	12.7	27.6	16.9	10.6	38.4
<b>%</b>	10.5%	9.1%	9.1%	10.2%	11.2%	10.4%	10.5%	10.5%	12.6%	10.6%
predominantly job-related	135.5	4.4	8.3	26.6	26.2	9.1	19.8	11.9	7.4	21.8
predominantly private	59.8	(1.5)	(2.7)	9.7	9.7	3.6	7.8	4.9	3.2	16.7

1 Extrapolated figures in Thousands. Values that are inaccurate on account of the sample error are put in parentheses.

Source: Statistics Austria – Microcensus / Labour Force Survey

**Table 20:**  
**Adults' participation in formal and non-formal education: population aged 25 to 64 years by participation, labour status, gender, age and highest level of completed education, 2007<sup>1</sup>**

	Resident population					of which people in employment		
	total	of which persons who participated in formal and/or non-formal education		of which persons who did not participate in any educational activities although they wanted to		total	of which persons who participated in formal and/or non-formal education	
	Thousands	Thousands	%	Thousands	%	Thousands	Thousands	%
<b>All</b>	<b>4,561.8</b>	<b>1,912.6</b>	<b>41.9</b>	<b>386.6</b>	<b>11.8</b>	<b>3,231.5</b>	<b>1,562.1</b>	<b>48.3</b>
Females	2,289.3	912.7	39.9	219.4	10.4	1,380.2	679.5	49.2
Males	2,272.5	999.9	44.0	167.2	13.6	1,851.3	882.6	47.7
<b>Age</b>								
25 to 34 years	1,079.9	508.4	47.1	132.2	8.2	792.6	375.2	47.3
35 to 44 years	1,377.1	664.0	48.2	117.9	11.7	1,137.5	594.7	52.3
45 to 54 years	1,182.2	505.8	42.8	77.4	15.3	974.1	459.2	47.1
55 to 64 years	922.6	234.4	25.4	59.1	15.6	327.3	133.0	40.6
<b>Highest level of completed education</b>								
Compulsory school	853.5	153.5	18.0	65.7	13.0	.	.	.
Apprenticeship	1,842.3	631.5	34.3	164.8	11.2	.	.	.
Intermediate VET school	630.1	283.6	45.0	63.3	10.0	.	.	.
Upper secondary school with "Matura" <sup>2</sup> exam	657.4	415.4	63.2	53.7	12.2	.	.	.
Universität, Fachhochschule, equivalent study program	578.6	428.6	74.1	39.2	14.8	.	.	.

1 Adults' participation in education and continuing education within 12 months prior to the survey; formal education: school (including apprenticeship) and higher education system; non-formal education: courses and training.  
 2 Higher education (HE) entrance qualification.

Source: Statistics Austria – EU-Adult Education Survey



