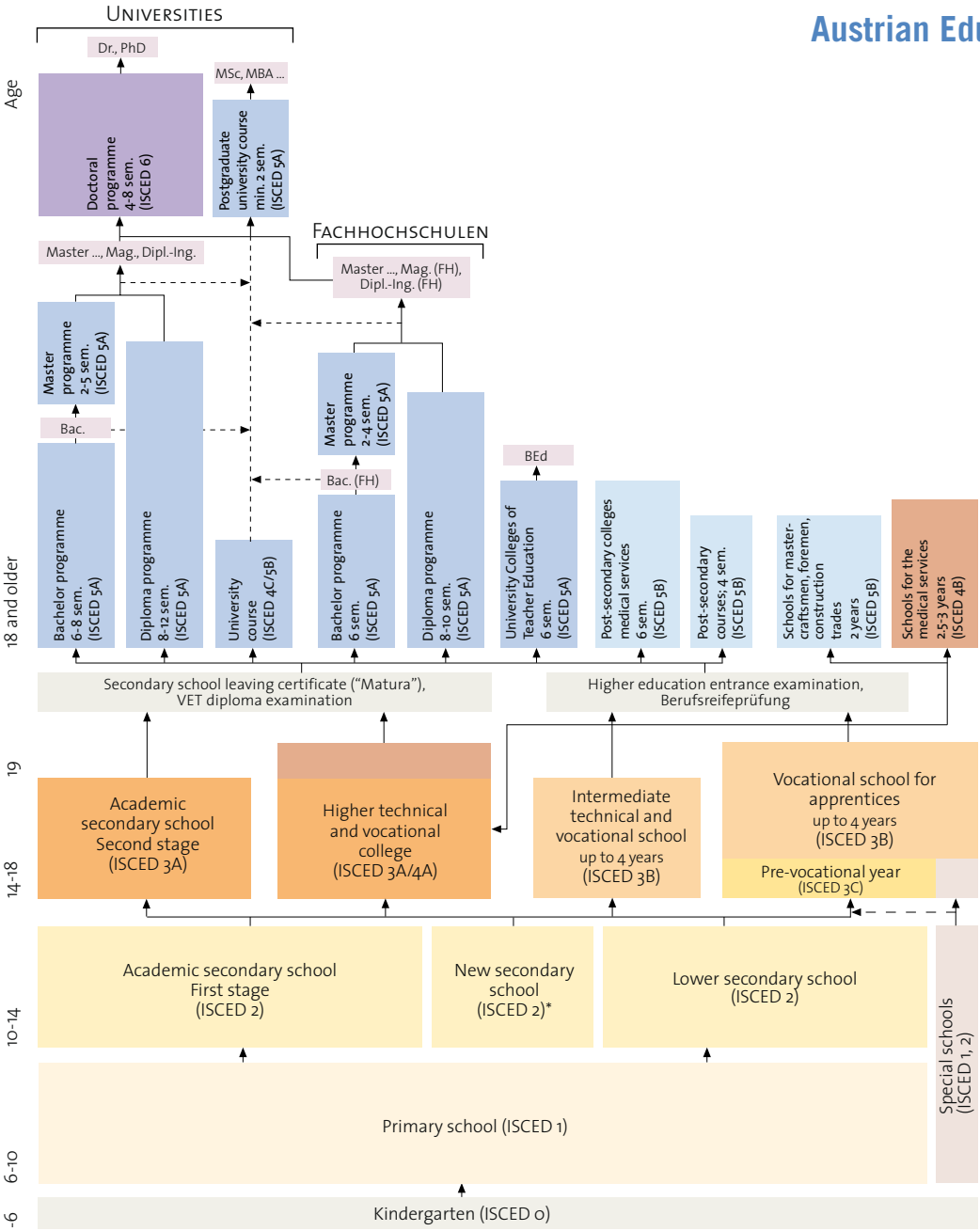


# Statistical Guide

2008

Key facts and figures  
about schools and  
adult education in Austria

# Austrian Educational System



ISCED: International Standard Classification of Education (UNESCO)

\* Beginning school year 2008/09

# Statistical Guide

8  
0  
0  
2

**Key facts and figures**  
about schools and  
adult education in Austria

Note on sources:

Unless other sources are indicated, data are based on a survey conducted in accordance with the Education Documentation Act and have been provided by Statistics Austria.

You are kindly requested to inform us by e-mail if your postal address has changed.  
Your comments and suggestions for future editions are welcome as well.

E-mail to: [statistik@bmukk.gv.at](mailto:statistik@bmukk.gv.at)

Postal Address:

Federal Ministry for Education, the Arts and Culture  
Division V/1  
Education Statistics and Information Technology  
Minoritenplatz 5, 1014 Vienna, Austria

Closing date for this issue: November 30, 2008

Published and produced by:

Federal Ministry for Education, the Arts and Culture (BMUKK)  
Minoritenplatz 5, 1014 Vienna, Austria

Editors:

Susanne Archam, Maria Brauchart, Thomas Dörner,  
Michael Lückl, Mark Németh, Brigitte Roubal, Josef Steiner

All rights reserved.

No part of the present publication may be reproduced without quotation of source.

Cover design: Skibar Grafik Design

English translation: Wolf Zemina

Composition: P. Sachartschenko & S. Spreitzer OEG

Printed by: Berger, Horn

## Preface

Education plays an important role at an international level concerning innovation and competition and constitutes the basis for success in economic and social life.

The “Statistical Guide 2008” provides figures and facts in the fields of schools, universities and adult education. The clear presentation of essential statistical key data and indicators from the field of education makes the present publication a valuable basis for all persons interested in education.

The “Statistical Guide 2008” continues the series of publications initiated last year by the Austrian Ministry of Education, the Arts and Culture, which proved to be a useful bilingual source of information and statistics about the Austrian system of school and adult education. The present publication continues the series with new statistical data.

I wish all readers enjoyable reading with this statistical brochure.



Dr. Claudia Schmied  
Federal Minister for  
Education, the Arts and Culture



# Content

Table 1:	Key data on education and population statistics, 2000/01, 2006/07 and 2007/08 . . . . .	7
Table 2:	Demographic development, population aged 6 to 18 years, 1983 – 2033 . . . . . <i>with chart</i>	8
Table 3:	Educational attainment of the population: 25 to 64 year old resident population by highest level of education attained, 2007 . . . . .	9
Table 4:	Schools, classes and students by type of school and federal province, school year 2007/08 . . . . . <i>with charts</i>	10
Table 5:	Students with other than Austrian citizenship by type of school and federal province, school year 2007/08 . . . . .	16
Table 6:	Students with non-German mother tongue by type of school and federal province, school year 2007/08 . . . . .	17
Table 7:	Proportions of school types, distribution of all pupils/students by type of school, school year 2007/08 . . . . . <i>with charts</i>	19
Table 7a:	Proportions of school types, distribution of male pupils/students by type of school, school year 2007/08 . . . . .	20
Table 7b:	Proportions of school types, distribution of female pupils/students by type of school, school year 2007/08 . . . . .	21
Table 8:	Class sizes, school year 2007/08 . . . . . <i>with charts</i>	23
Table 9:	Teaching staff by school type and federal province, school year 2007/08 . . . . .	24
Table 10:	Recipients of student support and/or accommodation grants by support category, type of school and federal province, school year 2006/07 . . . . .	26
Table 11:	Recipients of student support and/or accommodation grants: average (annual) amount of support in € by support category, type of school and federal province, school year 2006/07 . . . . .	27
Table 12:	Students in graduation classes of upper secondary schools by school type and gender, graduation years 1990, 2000, 2005, 2007 and 2008 . . . . .	28
Table 13:	Reference levels of European average performance ( <i>Benchmarks</i> ) in education and training, 2007 . . . . .	29
Table 14:	Adult education: number of events and participation, calendar year 2006 and academic year 2005/06, respectively . . . . .	30
Table 15:	Adults' participation in lifelong learning: Population of 15 years and older by participation in training and continuing education; type, purpose and hours by age and gender, 2007 . . . . .	31
Table 16:	Labour force aged 25 to 64 years participating in continuing education by federal province and purpose of continuing education, 2007 . . . . .	32





**Table 1:**  
**Key data on education and population statistics, 2000/01, 2006/07 and 2007/08**

	2007/08		2006/07		2000/01	
	Total	of which females %	Total	of which females %	Total	of which females %
Children in kindergartens <sup>1</sup>	205,636	48.9	201,277	48.8	208,930	49.1
Children in 1 <sup>st</sup> classes of primary schools	82,128	47.9	83,923	48.0	97,040	48.4
Students in grade 9	100,690	50.5	101,566	50.4	94,134	51.2
of which in secondary schools	57,688	54.1	58,558	54.0	52,930	54.1
Students in graduation (Matura) classes of secondary schools <sup>2</sup>	43,612	57.1	43,399	57.1	39,302	56.7
of which in VET courses	1,744	73.9	1,877	74.3	1,482	69.9
New entrants in higher education institutions <sup>3</sup>	48,668	53.9	44,803	53.2	34,481	53.5
Students in higher education institutions <sup>4</sup>	252,888	52.7	241,714	52.5	239,691	50.2
Graduates from higher education institutions <sup>5</sup>	24,864	53.6	23,957	52.7	17,051	49.4
Live births <sup>6</sup>	76,250	48.9	77,914	49.0	78,268	48.7
Resident population <sup>6</sup>	8,315,379	51.3	8,281,948	51.4	8,011,566	51.6
Resident population with completed secondary education <sup>6,7</sup>	4,971,400	47.0	4,965,300	47.1	4,566,800	46.8
Proportion <i>in</i> % of age cohort						
Children in kindergartens <sup>1</sup>	84.9	85.2	83.5	84.0	77.6	n.a.
Graduates from (upper) secondary schools <sup>8</sup>	42.1	48.6	42.1	48.6	38.3	43.9
Resident population with completed secondary education <sup>6,9</sup>	81.5	76.1	81.8	76.3	77.4	71.1
Proportion of higher education graduates <sup>6,7,10</sup>	14.8	15.8	11.8	10.7	8.1	7.2

1 Children aged 3 to 5 years (age as at September 1) in public and private nurseries, kindergartens, day-homes and mixed-age child care institutions.

2 Students in graduation classes of secondary schools with Matura school leaving certificate (higher education entrance qualification), school year; including VET courses.

3 New entrants in university degree programmes, Fachhochschule degree programmes and at private universities; respective academic year.

4 Total of all students in degree programmes; winter terms.

5 First degrees of students (diploma, bachelor); respective academic year.

6 Calendar years 2007, 2006 and 2000.

7 Microcensus annual average.

8 As 2, without VET courses, in relation to the average of the corresponding age group (arithmetic mean of the 18 to 19 year old resident population).

9 Proportion of persons aged 25 to 64 years with at least completed secondary education in relation to the resident population of the same age group.

10 Proportion of persons aged 25 to 64 years with higher education degree (university and Fachhochschule degree programmes) in relation to the labour force of the same age group.

n.a. – Not available.

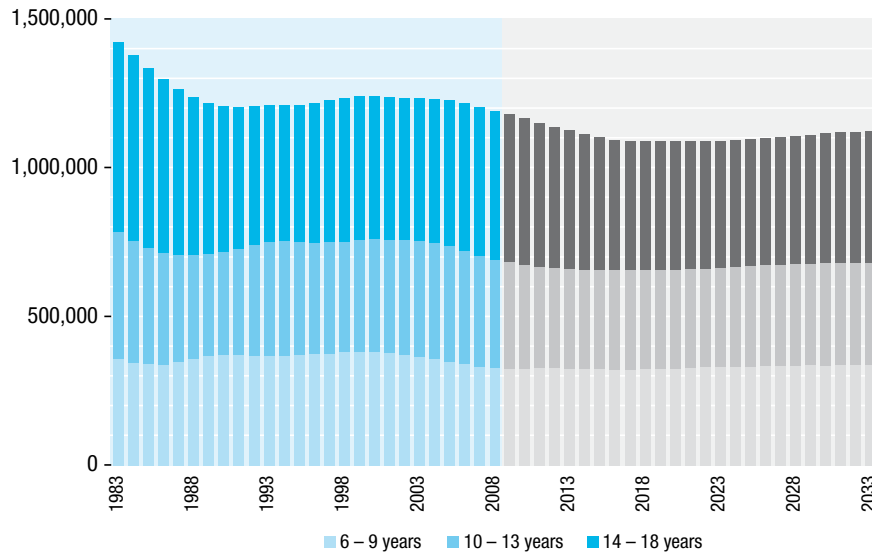
Source: Statistics Austria

**Table 2:**  
**Demographic development, population aged 6 to 18 years, 1983 – 2033<sup>1</sup>**

	6 – 9 years	10 – 13 years	14 – 18 years
1983	359,045	428,768	638,177
1988	358,815	350,746	528,241
1993	370,989	381,511	459,917
1998	381,525	372,945	480,730
2003	366,735	389,352	479,131
<b>2008</b>	<b>328,658</b>	<b>366,071</b>	<b>498,666</b>
2013	327,696	334,340	463,850
2018	325,611	332,378	431,248
2023	332,501	333,455	427,377
2028	337,398	340,844	431,043
2033	338,161	345,346	440,976

1 Resident population, annual average; from 2008: forecast.

Source: Statistics Austria



**Table 3:**  
**Educational attainment of the population:**  
**25 to 64 year old resident population by highest level of education attained, 2007**

	Total		Compulsory school		Apprenticeship		Intermediate VET school (without vocational school for apprentices)		Upper secondary school with „Matura“ <sup>1</sup> exam		University, university college and other HE institutions	
	Thousands	Pro-portion %	Thousands	Pro-portion %	Thousands	Pro-portion %	Thousands	Pro-portion %	Thousands	Pro-portion %	Thousands	Pro-portion %
<b>All</b>												
25 to 34 years	1,079.9	100.0	139.7	12.9	428.2	39.7	113.5	10.5	231.0	21.4	167.4	15.5
35 to 44 years	1,377.1	100.0	211.8	15.4	567.3	41.2	193.6	14.1	214.3	15.6	190.3	13.8
45 to 54 years	1,182.2	100.0	241.0	20.4	493.6	41.7	170.4	14.4	132.0	11.2	145.3	12.3
55 to 64 years	922.6	100.0	249.8	27.1	381.1	41.3	133.1	14.4	76.6	8.3	82.1	8.9
<b>Total</b>	<b>4,561.8</b>	<b>100.0</b>	<b>842.3</b>	<b>18.5</b>	<b>1,870.1</b>	<b>41.0</b>	<b>610.5</b>	<b>13.4</b>	<b>653.8</b>	<b>14.3</b>	<b>585.1</b>	<b>12.8</b>
<b>Females</b>												
25 to 34 years	539.8	100.0	81.1	15.0	162.6	30.1	75.5	14.0	125.4	23.2	95.2	17.6
35 to 44 years	683.4	100.0	135.4	19.8	211.1	30.9	132.1	19.3	109.7	16.0	95.1	13.9
45 to 54 years	591.7	100.0	166.0	28.1	174.2	29.4	117.0	19.8	60.4	10.2	74.1	12.5
55 to 64 years	474.4	100.0	165.7	34.9	142.7	30.1	94.9	20.0	37.6	7.9	33.5	7.1
<b>Total</b>	<b>2,289.3</b>	<b>100.0</b>	<b>548.2</b>	<b>23.9</b>	<b>690.7</b>	<b>30.2</b>	<b>419.6</b>	<b>18.3</b>	<b>333.0</b>	<b>14.5</b>	<b>297.9</b>	<b>13.0</b>
<b>Males</b>												
25 to 34 years	540.1	100.0	58.6	10.9	265.6	49.2	38.0	7.0	105.6	19.5	72.3	13.4
35 to 44 years	693.7	100.0	76.4	11.0	356.1	51.3	61.4	8.9	104.6	15.1	95.2	13.7
45 to 54 years	590.5	100.0	75.0	12.7	319.3	54.1	53.3	9.0	71.6	12.1	71.2	12.1
55 to 64 years	448.2	100.0	84.2	18.8	238.3	53.2	38.2	8.5	39.0	8.7	48.5	10.8
<b>Total</b>	<b>2,272.5</b>	<b>100.0</b>	<b>294.1</b>	<b>12.9</b>	<b>1,179.4</b>	<b>51.9</b>	<b>191.0</b>	<b>8.4</b>	<b>320.8</b>	<b>14.1</b>	<b>287.2</b>	<b>12.6</b>

1 Higher education (HE) entrance qualification.

Source: Statistics Austria - Microcensus

**Table 4:**  
**Schools, classes and students by type of school and federal province, school year 2007/08<sup>1</sup>**

Type of school <sup>2</sup>	Austria, total				Burgenland			
	Schools	Classes	Students		Schools	Classes	Students	
			all	of which female			all	of which female
<b>All mainstream schools</b>	<b>5,820</b>	<b>54,173</b>	<b>1,163,978</b>	<b>556,731</b>	<b>286</b>	<b>1,753</b>	<b>35,648</b>	<b>17,293</b>
<b>General schools, total</b>	<b>5,139</b>	<b>39,852</b>	<b>827,565</b>	<b>405,408</b>	<b>260</b>	<b>1,289</b>	<b>24,815</b>	<b>12,121</b>
<b>Compulsory schools, total</b>	<b>4,804</b>	<b>31,539</b>	<b>622,123</b>	<b>294,453</b>	<b>249</b>	<b>1,040</b>	<b>18,975</b>	<b>9,018</b>
Primary schools	3,225	17,516	337,934	163,074	193	598	10,334	4,979
Lower secondary schools	1,163	11,249	249,703	118,690	41	371	7,835	3,780
Special schools and special (SEN) classes	331	1,770	13,148	4,756	12	42	250	100
Pre-vocational schools	268	1,004	21,338	7,933	12	29	556	159
<b>Academic secondary schools, total</b>	<b>335</b>	<b>8,313</b>	<b>205,442</b>	<b>110,955</b>	<b>11</b>	<b>249</b>	<b>5,840</b>	<b>3,103</b>
Academic secondary schools, full 8 / 9 year cycle	270	7,109	177,364	93,968	8	193	4,545	2,362
Academic secondary schools, lower level	270	4,400	117,656	60,958	8	133	3,345	1,727
Academic secondary schools, upper level	260	2,709	59,708	33,010	7	60	1,200	635
Academic secondary schools, separate upper level	98	1,033	23,930	14,694	7	56	1,295	741
Academic secondary schools for people in employment	8	138	3,459	1,928	-	-	-	-
Add-on secondary schools	4	33	689	365	-	-	-	-
<b>Technical and vocational schools, post-secondary colleges, total</b>	<b>644</b>	<b>13,841</b>	<b>323,876</b>	<b>141,588</b>	<b>25</b>	<b>449</b>	<b>10,442</b>	<b>4,793</b>
<b>Vocational schools for apprentices, total</b>	<b>160</b>	<b>6,120</b>	<b>136,191</b>	<b>47,011</b>	<b>4</b>	<b>116</b>	<b>2,409</b>	<b>589</b>
Vocational schools for apprentices	151	6,075	135,356	46,506	4	116	2,409	589
Vocational schools for agriculture and forestry for apprentices	9	45	835	505	-	-	-	-
<b>Intermediate technical and vocational schools, total</b>	<b>430</b>	<b>2,229</b>	<b>52,003</b>	<b>25,771</b>	<b>21</b>	<b>85</b>	<b>1,907</b>	<b>1,074</b>
Crafts, technical and arts schools	134	750	16,567	3,279	6	21	481	130
Schools of business administration	110	510	11,864	6,884	8	27	656	382
Schools of management and the service industries	88	396	9,137	7,824	5	21	482	407
Schools for social professions	14	56	1,455	1,337	-	-	-	-
Schools for agriculture and forestry	99	517	12,980	6,447	3	16	288	155
<b>Higher technical and vocational colleges, total</b>	<b>303</b>	<b>5,491</b>	<b>135,658</b>	<b>68,789</b>	<b>14</b>	<b>248</b>	<b>6,126</b>	<b>3,130</b>
Crafts, technical and arts colleges	110	2,462	59,942	15,072	5	104	2,576	612
Colleges of business administration	109	1,795	43,863	26,515	7	96	2,289	1,338
Colleges of management and the service industries	87	1,109	28,211	25,661	4	48	1,261	1,180
Colleges of agriculture and forestry	12	125	3,642	1,541	-	-	-	-
<b>Post-secondary vocational colleges</b>	<b>1</b>	<b>1</b>	<b>24</b>	<b>17</b>	<b>-</b>	<b>-</b>	<b>-</b>	<b>-</b>
<b>Institutions for teacher training, total</b>	<b>38</b>	<b>480</b>	<b>12,537</b>	<b>9,735</b>	<b>1</b>	<b>15</b>	<b>391</b>	<b>379</b>
Intermediate schools for teacher training	4	128	3,208	861	-	-	-	-
Higher colleges for teacher training	34	352	9,329	8,874	1	15	391	379

1 Healthcare schools and schools with a statute of their own are not included.

2 Schools offering several types of schooling are counted only once in sum rows.

Source: Statistics Austria – Education documentation

**Table 4 (continued):  
Schools, classes and students by type of school and federal province, school year 2007/08<sup>1</sup>**

Type of school <sup>2</sup>	Carinthia				Lower Austria			
	Schools	Classes	Students		Schools	Classes	Students	
			all	of which female			all	of which female
<b>All mainstream schools</b>	<b>444</b>	<b>3,891</b>	<b>79,699</b>	<b>38,503</b>	<b>1,204</b>	<b>10,095</b>	<b>213,187</b>	<b>101,182</b>
<b>General schools, total</b>	<b>391</b>	<b>2,792</b>	<b>54,722</b>	<b>27,018</b>	<b>1,077</b>	<b>7,650</b>	<b>153,996</b>	<b>75,243</b>
Compulsory schools, total	368	2,247	41,045	19,670	1,024	6,289	120,277	56,882
Primary schools	272	1,334	22,392	10,953	635	3,335	64,791	31,331
Lower secondary schools	72	765	17,061	8,148	263	2,256	47,802	22,789
Special schools and special (SEN) classes	23	106	681	242	119	507	3,729	1,358
Pre-vocational schools	8	42	911	327	66	191	3,955	1,404
Academic secondary schools, total	23	545	13,677	7,348	53	1,361	33,719	18,361
Academic secondary schools, full 8 / 9 year cycle	15	453	11,724	6,185	43	1,199	30,084	16,194
Academic secondary schools, lower level	15	290	8,026	4,142	43	781	20,978	10,998
Academic secondary schools, upper level	15	163	3,698	2,043	40	418	9,106	5,196
Academic secondary schools, separate upper level	7	75	1,598	958	14	130	2,995	1,836
Academic secondary schools for people in employment	2	17	355	205	1	3	50	2
Add-on secondary schools	-	-	-	-	3	29	590	329
<b>Technical and vocational schools, post-secondary colleges, total</b>	<b>52</b>	<b>1,083</b>	<b>24,518</b>	<b>11,038</b>	<b>122</b>	<b>2,374</b>	<b>57,438</b>	<b>24,311</b>
Vocational schools for apprentices, total	11	450	8,907	3,184	23	873	20,324	5,823
Vocational schools for apprentices	10	448	8,884	3,172	21	856	19,981	5,635
Vocational schools for agriculture and forestry for apprentices	1	2	23	12	2	17	343	188
Intermediate technical and vocational schools, total	36	166	3,865	1,652	86	491	11,487	5,744
Crafts, technical and arts schools	10	54	1,146	140	22	148	3,218	474
Schools of business administration	6	26	568	271	22	105	2,494	1,442
Schools of management and the service industries	8	28	661	493	20	85	2,041	1,715
Schools for social professions	2	6	148	133	6	27	757	703
Schools for agriculture and forestry	10	52	1,342	615	20	126	2,977	1,410
Higher technical and vocational colleges, total	24	467	11,746	6,202	62	1,010	25,627	12,744
Crafts, technical and arts colleges	8	185	4,639	1,112	21	430	10,499	2,338
Colleges of business administration	9	148	3,633	1,990	22	320	8,092	4,955
Colleges of management and the service industries	8	119	3,052	2,742	18	227	6,007	5,167
Colleges of agriculture and forestry	1	15	422	358	3	33	1,029	284
Post-secondary vocational colleges	-	-	-	-	-	-	-	-
<b>Institutions for teacher training, total</b>	<b>1</b>	<b>16</b>	<b>459</b>	<b>447</b>	<b>6</b>	<b>71</b>	<b>1,753</b>	<b>1,628</b>
Intermediate schools for teacher training	-	-	-	-	-	-	-	-
Higher colleges for teacher training	1	16	459	447	6	71	1,753	1,628

1 Healthcare schools and schools with a statute of their own are not included.

2 Schools offering several types of schooling are counted only once in sum rows.

Source: Statistics Austria – Education documentation

**Table 4 (continued):  
Schools, classes and students by type of school and federal province, school year 2007/08<sup>1</sup>**

Type of school <sup>2</sup>	Upper Austria				Salzburg			
	Schools	Classes	Students		Schools	Classes	Students	
			all	of which female			all	of which female
<b>All mainstream schools</b>	<b>1,042</b>	<b>9,959</b>	<b>215,895</b>	<b>101,980</b>	<b>374</b>	<b>3,853</b>	<b>81,402</b>	<b>39,190</b>
<b>General schools, total</b>	<b>914</b>	<b>7,231</b>	<b>149,811</b>	<b>72,986</b>	<b>323</b>	<b>2,715</b>	<b>56,600</b>	<b>27,681</b>
<b>Compulsory schools, total</b>	<b>866</b>	<b>6,025</b>	<b>120,032</b>	<b>56,441</b>	<b>298</b>	<b>2,190</b>	<b>43,340</b>	<b>20,588</b>
Primary schools	581	3,274	62,273	29,519	188	1,187	23,059	11,048
Lower secondary schools	243	2,318	51,475	24,496	75	788	17,821	8,650
Special schools and special (SEN) classes	37	217	1,453	510	25	146	987	344
Pre-vocational schools	57	216	4,831	1,916	19	69	1,473	546
<b>Academic secondary schools, total</b>	<b>48</b>	<b>1,206</b>	<b>29,779</b>	<b>16,545</b>	<b>25</b>	<b>525</b>	<b>13,260</b>	<b>7,093</b>
Academic secondary schools, full 8 / 9 year cycle	39	1,038	25,757	13,929	19	432	11,005	5,709
Academic secondary schools, lower level	39	649	17,164	8,994	19	256	7,132	3,690
Academic secondary schools, upper level	38	389	8,593	4,935	18	176	3,873	2,019
Academic secondary schools, separate upper level	11	149	3,586	2,360	8	71	1,729	1,084
Academic secondary schools for people in employment	1	19	436	256	1	22	526	300
Add-on secondary schools	-	-	-	-	-	-	-	-
<b>Technical and vocational schools, post-secondary colleges, total</b>	<b>121</b>	<b>2,641</b>	<b>63,702</b>	<b>27,214</b>	<b>49</b>	<b>1,119</b>	<b>24,293</b>	<b>11,013</b>
<b>Vocational schools for apprentices, total</b>	<b>28</b>	<b>1,230</b>	<b>28,864</b>	<b>9,515</b>	<b>13</b>	<b>535</b>	<b>10,435</b>	<b>3,855</b>
Vocational schools for apprentices	26	1,223	28,760	9,458	12	532	10,372	3,812
Vocational schools for agriculture and forestry for apprentices	2	7	104	57	1	3	63	43
<b>Intermediate technical and vocational schools, total</b>	<b>81</b>	<b>405</b>	<b>9,601</b>	<b>4,454</b>	<b>34</b>	<b>179</b>	<b>3,975</b>	<b>1,927</b>
Crafts, technical and arts schools	31	147	3,549	522	10	62	1,277	285
Schools of business administration	16	66	1,450	836	8	31	656	342
Schools of management and the service industries	16	75	1,725	1,592	9	49	1,029	854
Schools for social professions	1	5	88	77	1	3	80	70
Schools for agriculture and forestry	19	112	2,789	1,427	7	34	933	376
<b>Higher technical and vocational colleges, total</b>	<b>55</b>	<b>1,005</b>	<b>25,213</b>	<b>13,228</b>	<b>26</b>	<b>405</b>	<b>9,883</b>	<b>5,231</b>
Crafts, technical and arts colleges	21	439	10,964	2,564	8	158	3,981	1,173
Colleges of business administration	18	310	7,606	4,703	8	138	3,188	1,763
Colleges of management and the service industries	16	236	6,025	5,635	9	99	2,399	2,212
Colleges of agriculture and forestry	2	20	618	326	1	10	315	83
<b>Post-secondary vocational colleges</b>	<b>1</b>	<b>1</b>	<b>24</b>	<b>17</b>	<b>-</b>	<b>-</b>	<b>-</b>	<b>-</b>
<b>Institutions for teacher training, total</b>	<b>7</b>	<b>87</b>	<b>2,382</b>	<b>1,780</b>	<b>2</b>	<b>19</b>	<b>509</b>	<b>496</b>
Intermediate schools for teacher training	1	28	734	189	-	-	-	-
Higher colleges for teacher training	6	59	1,648	1,591	2	19	509	496

1 Healthcare schools and schools with a statute of their own are not included.

2 Schools offering several types of schooling are counted only once in sum rows.

Source: Statistics Austria – Education documentation

**Table 4 (continued):  
Schools, classes and students by type of school and federal province, school year 2007/08<sup>1</sup>**

Type of school <sup>2</sup>	Styria				Tyrol			
	Schools	Classes	Students		Schools	Classes	Students	
			all	of which female			all	of which female
<b>All mainstream schools</b>	<b>928</b>	<b>7,503</b>	<b>160,260</b>	<b>76,207</b>	<b>664</b>	<b>4,956</b>	<b>104,532</b>	<b>50,088</b>
<b>General schools, total</b>	<b>812</b>	<b>5,448</b>	<b>112,578</b>	<b>54,997</b>	<b>588</b>	<b>3,700</b>	<b>73,652</b>	<b>35,960</b>
<b>Compulsory schools, total</b>	<b>764</b>	<b>4,319</b>	<b>84,502</b>	<b>39,945</b>	<b>563</b>	<b>3,106</b>	<b>59,279</b>	<b>28,096</b>
Primary schools	535	2,496	45,825	22,254	394	1,649	29,856	14,445
Lower secondary schools	179	1,612	35,442	16,718	109	1,160	25,695	12,331
Special schools and special (SEN) classes	28	74	550	186	34	183	1,310	434
Pre-vocational schools	51	137	2,685	787	33	114	2,418	886
<b>Academic secondary schools, total</b>	<b>48</b>	<b>1,129</b>	<b>28,076</b>	<b>15,052</b>	<b>25</b>	<b>594</b>	<b>14,373</b>	<b>7,864</b>
Academic secondary schools, full 8 / 9 year cycle	36	923	23,125	12,159	18	457	11,373	5,981
Academic secondary schools, lower level	36	561	14,891	7,644	18	274	7,492	3,856
Academic secondary schools, upper level	36	362	8,234	4,515	17	183	3,881	2,125
Academic secondary schools, separate upper level	16	187	4,547	2,660	10	105	2,338	1,568
Academic secondary schools for people in employment	1	19	404	233	1	28	563	279
Add-on secondary schools	-	-	-	-	1	4	99	36
<b>Technical and vocational schools, post-secondary colleges, total</b>	<b>108</b>	<b>1,985</b>	<b>45,915</b>	<b>19,724</b>	<b>71</b>	<b>1,199</b>	<b>29,361</b>	<b>13,286</b>
<b>Vocational schools for apprentices, total</b>	<b>22</b>	<b>933</b>	<b>21,039</b>	<b>7,252</b>	<b>25</b>	<b>566</b>	<b>13,754</b>	<b>5,015</b>
Vocational schools for apprentices	20	923	20,842	7,115	24	560	13,649	4,947
Vocational schools for agriculture and forestry for apprentices	2	10	197	137	1	6	105	68
<b>Intermediate technical and vocational schools, total</b>	<b>78</b>	<b>290</b>	<b>6,346</b>	<b>3,402</b>	<b>39</b>	<b>226</b>	<b>5,383</b>	<b>2,903</b>
Crafts, technical and arts schools	14	68	1,310	188	16	88	1,845	737
Schools of business administration	19	65	1,325	770	11	52	1,227	682
Schools of management and the service industries	11	43	804	669	6	30	806	790
Schools for social professions	2	6	143	137	-	-	-	-
Schools for agriculture and forestry	33	108	2,764	1,638	6	56	1,505	694
<b>Higher technical and vocational colleges, total</b>	<b>43</b>	<b>762</b>	<b>18,530</b>	<b>9,070</b>	<b>30</b>	<b>407</b>	<b>10,224</b>	<b>5,368</b>
Crafts, technical and arts colleges	10	332	7,977	1,620	15	181	4,620	1,375
Colleges of business administration	16	252	6,062	3,837	10	149	3,484	1,990
Colleges of management and the service industries	14	149	3,624	3,392	6	69	1,886	1,827
Colleges of agriculture and forestry	3	29	867	221	1	8	234	176
<b>Post-secondary vocational colleges</b>	<b>-</b>	<b>-</b>	<b>-</b>	<b>-</b>	<b>-</b>	<b>-</b>	<b>-</b>	<b>-</b>
<b>Institutions for teacher training, total</b>	<b>8</b>	<b>70</b>	<b>1,767</b>	<b>1,486</b>	<b>5</b>	<b>57</b>	<b>1,519</b>	<b>842</b>
Intermediate schools for teacher training	1	12	279	81	1	31	861	216
Higher colleges for teacher training	7	58	1,488	1,405	4	26	658	626

1 Healthcare schools and schools with a statute of their own are not included.

2 Schools offering several types of schooling are counted only once in sum rows.

Source: Statistics Austria – Education documentation

**Table 4 (continued):  
Schools, classes and students by type of school and federal province, school year 2007/08<sup>1</sup>**

Type of school <sup>2</sup>	Vorarlberg				Vienna			
	Schools	Classes	Students		Schools	Classes	Students	
			all	of which female			all	of which female
<b>All mainstream schools</b>	<b>281</b>	<b>2,802</b>	<b>57,981</b>	<b>27,920</b>	<b>597</b>	<b>9,361</b>	<b>215,374</b>	<b>104,368</b>
<b>General schools, total</b>	<b>256</b>	<b>2,139</b>	<b>42,638</b>	<b>20,768</b>	<b>518</b>	<b>6,888</b>	<b>158,753</b>	<b>78,634</b>
<b>Compulsory schools, total</b>	<b>243</b>	<b>1,805</b>	<b>34,492</b>	<b>16,392</b>	<b>429</b>	<b>4,518</b>	<b>100,181</b>	<b>47,421</b>
Primary schools	165	945	17,396	8,380	262	2,698	62,008	30,165
Lower secondary schools	57	642	14,481	7,025	124	1,337	32,091	14,753
Special schools and special (SEN) classes	18	145	1,119	408	35	350	3,069	1,174
Pre-vocational schools	11	73	1,496	579	11	133	3,013	1,329
<b>Academic secondary schools, total</b>	<b>13</b>	<b>334</b>	<b>8,146</b>	<b>4,376</b>	<b>89</b>	<b>2,370</b>	<b>58,572</b>	<b>31,213</b>
Academic secondary schools, full 8 / 9 year cycle	10	258	6,486	3,319	82	2,156	53,265	28,130
Academic secondary schools, lower level	10	159	4,361	2,225	82	1,297	34,267	17,682
Academic secondary schools, upper level	10	99	2,125	1,094	79	859	18,998	10,448
Academic secondary schools, separate upper level	6	76	1,660	1,057	19	184	4,182	2,430
Academic secondary schools for people in employment	-	-	-	-	1	30	1,125	653
Add-on secondary schools	-	-	-	-	-	-	-	-
<b>Technical and vocational schools, post-secondary colleges, total</b>	<b>24</b>	<b>651</b>	<b>15,034</b>	<b>6,845</b>	<b>72</b>	<b>2,340</b>	<b>53,173</b>	<b>23,364</b>
<b>Vocational schools for apprentices, total</b>	<b>8</b>	<b>333</b>	<b>7,254</b>	<b>2,544</b>	<b>26</b>	<b>1,084</b>	<b>23,205</b>	<b>9,234</b>
Vocational schools for apprentices	8	333	7,254	2,544	26	1,084	23,205	9,234
Vocational schools for agriculture and forestry for apprentices	-	-	-	-	-	-	-	-
<b>Intermediate technical and vocational schools, total</b>	<b>14</b>	<b>98</b>	<b>2,347</b>	<b>1,294</b>	<b>41</b>	<b>289</b>	<b>7,092</b>	<b>3,321</b>
Crafts, technical and arts schools	6	40	864	276	19	122	2,877	527
Schools of business administration	5	26	656	442	15	112	2,832	1,717
Schools of management and the service industries	5	19	445	444	8	46	1,144	860
Schools for social professions	-	-	-	-	2	9	239	217
Schools for agriculture and forestry	1	13	382	132	-	-	-	-
<b>Higher technical and vocational colleges, total</b>	<b>13</b>	<b>220</b>	<b>5,433</b>	<b>3,007</b>	<b>36</b>	<b>967</b>	<b>22,876</b>	<b>10,809</b>
Crafts, technical and arts colleges	5	92	2,127	626	17	541	12,559	3,652
Colleges of business administration	5	87	2,213	1,290	14	295	7,296	4,649
Colleges of management and the service industries	4	41	1,093	1,091	8	121	2,864	2,415
Colleges of agriculture and forestry	-	-	-	-	1	10	157	93
<b>Post-secondary vocational colleges</b>	<b>-</b>	<b>-</b>	<b>-</b>	<b>-</b>	<b>-</b>	<b>-</b>	<b>-</b>	<b>-</b>
<b>Institutions for teacher training, total</b>	<b>1</b>	<b>12</b>	<b>309</b>	<b>307</b>	<b>7</b>	<b>133</b>	<b>3,448</b>	<b>2,370</b>
Intermediate schools for teacher training	-	-	-	-	1	57	1,334	375
Higher colleges for teacher training	1	12	309	307	6	76	2,114	1,995

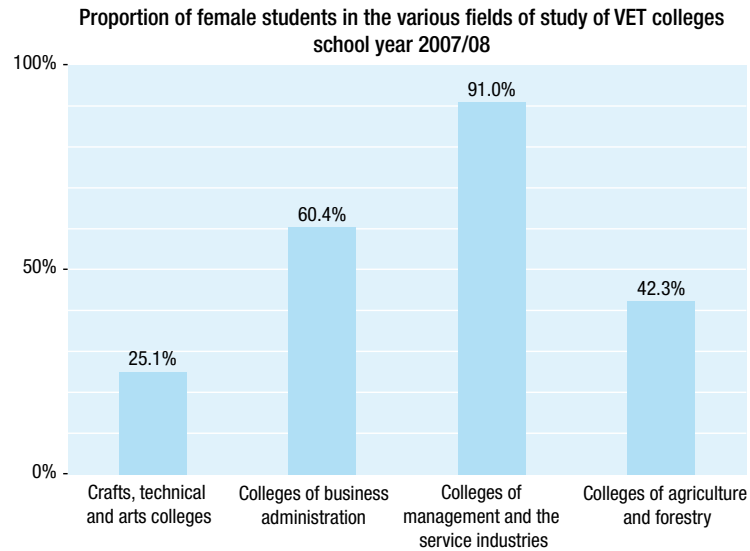
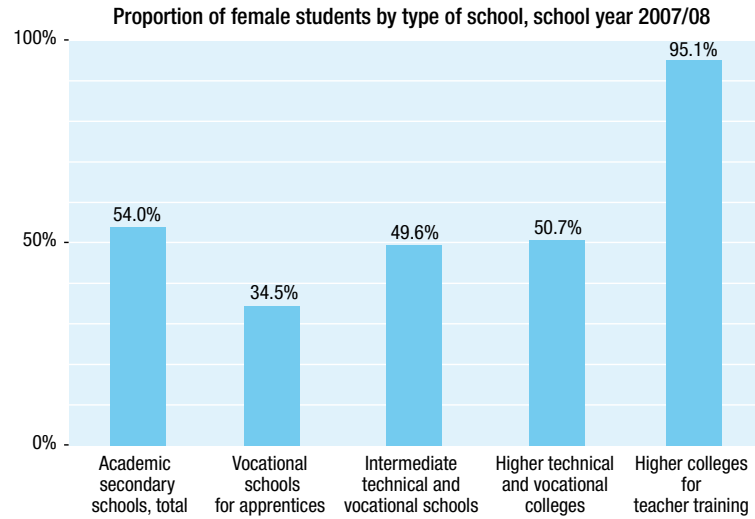
1 Healthcare schools and schools with a statute of their own are not included.

2 Schools offering several types of schooling are counted only once in sum rows.

Source: Statistics Austria – Education documentation



Charts table 4:



**Table 5:**  
**Students with other than Austrian citizenship by type of school and federal province, school year 2007/08<sup>1</sup>**

Type of school	Austria, total	Burgenland	Carinthia	Lower Austria	Upper Austria	Salzburg	Styria	Tyrol	Vorarlberg	Vienna
<b>All mainstream schools</b>	<b>107,792</b>	<b>2,076</b>	<b>5,492</b>	<b>13,679</b>	<b>17,385</b>	<b>9,469</b>	<b>9,805</b>	<b>8,516</b>	<b>6,217</b>	<b>35,153</b>
<b>General schools, total</b>	<b>87,147</b>	<b>1,565</b>	<b>4,292</b>	<b>11,068</b>	<b>14,243</b>	<b>7,295</b>	<b>8,086</b>	<b>6,482</b>	<b>5,006</b>	<b>29,110</b>
<b>Compulsory schools, total</b>	<b>74,690</b>	<b>1,312</b>	<b>3,679</b>	<b>9,932</b>	<b>13,032</b>	<b>6,179</b>	<b>6,774</b>	<b>5,735</b>	<b>4,523</b>	<b>23,524</b>
Primary schools	38,393	658	1,957	5,070	6,188	3,080	3,849	2,845	2,092	12,654
Lower secondary schools	31,001	596	1,556	3,960	5,968	2,636	2,680	2,456	1,988	9,161
Special schools and special (SEN) classes	2,414	14	61	524	232	203	49	214	279	838
Pre-vocational schools	2,882	44	105	378	644	260	196	220	164	871
<b>Academic secondary schools, total</b>	<b>12,457</b>	<b>253</b>	<b>613</b>	<b>1,136</b>	<b>1,211</b>	<b>1,116</b>	<b>1,312</b>	<b>747</b>	<b>483</b>	<b>5,586</b>
Academic secondary schools, full 8 / 9 year cycle	10,535	210	544	1,052	1,012	876	1,046	593	360	4,842
Academic secondary schools, lower level	7,141	126	376	710	742	600	695	390	216	3,286
Academic secondary schools, upper level	3,394	84	168	342	270	276	351	203	144	1,556
Academic secondary schools, separate upper level	1,493	43	58	60	167	101	232	77	123	632
Academic secondary schools for people in employment	399	-	11	-	32	139	34	71	-	112
Add-on secondary schools	30	-	-	24	-	-	-	6	-	-
<b>Technical and vocational schools, post-secondary colleges, total</b>	<b>20,381</b>	<b>507</b>	<b>1,197</b>	<b>2,593</b>	<b>3,125</b>	<b>2,165</b>	<b>1,690</b>	<b>1,966</b>	<b>1,189</b>	<b>5,949</b>
<b>Vocational schools for apprentices, total</b>	<b>8,719</b>	<b>102</b>	<b>355</b>	<b>879</b>	<b>1,310</b>	<b>1,022</b>	<b>574</b>	<b>1,227</b>	<b>614</b>	<b>2,636</b>
Vocational schools for apprentices	8,706	102	355	874	1,308	1,021	572	1,224	614	2,636
Vocational schools for agriculture and forestry for apprentices	13	-	-	5	2	1	2	3	-	-
<b>Intermediate technical and vocational schools, total</b>	<b>4,347</b>	<b>115</b>	<b>263</b>	<b>723</b>	<b>772</b>	<b>420</b>	<b>428</b>	<b>282</b>	<b>254</b>	<b>1,090</b>
Crafts, technical and arts schools	1,436	15	93	208	265	140	99	108	95	413
Schools of business administration	2,171	67	121	389	371	179	220	127	127	570
Schools of management and the service industries	552	28	35	87	101	83	64	39	23	92
Schools for social professions	54	-	7	20	2	7	3	-	-	15
Schools for agriculture and forestry	134	5	7	19	33	11	42	8	9	-
<b>Higher technical and vocational colleges, total</b>	<b>7,313</b>	<b>290</b>	<b>579</b>	<b>991</b>	<b>1,041</b>	<b>723</b>	<b>688</b>	<b>457</b>	<b>321</b>	<b>2,223</b>
Crafts, technical and arts colleges	2,657	55	135	326	287	295	279	222	119	939
Colleges of business administration	4,028	224	336	561	643	350	370	197	179	1,168
Colleges of management and the service industries	617	11	107	100	110	78	36	37	23	115
Colleges of agriculture and forestry	11	-	1	4	1	-	3	1	-	1
<b>Post-secondary vocational colleges</b>	<b>2</b>	<b>-</b>	<b>-</b>	<b>-</b>	<b>2</b>	<b>-</b>	<b>-</b>	<b>-</b>	<b>-</b>	<b>-</b>
<b>Institutions for teacher training, total</b>	<b>264</b>	<b>4</b>	<b>3</b>	<b>18</b>	<b>17</b>	<b>9</b>	<b>29</b>	<b>68</b>	<b>22</b>	<b>94</b>
Intermediate schools for teacher training	95	-	-	-	3	-	18	59	-	15
Higher colleges for teacher training	169	4	3	18	14	9	11	9	22	79

1 Healthcare schools and schools with a statute of their own are not included.

Source: Statistics Austria – Education documentation

**Table 6:**  
**Students with non-German mother tongue by type of school and federal province, school year 2007/08<sup>1</sup>**

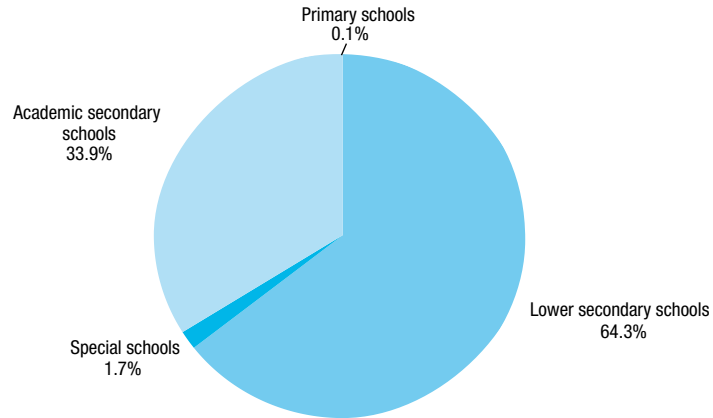
Type of school	Austria, total	Burgenland	Carinthia	Lower Austria	Upper Austria	Salzburg	Styria	Tyrol	Vorarlberg	Vienna
<b>All mainstream schools</b>	<b>188,409</b>	<b>3,813</b>	<b>6,733</b>	<b>21,302</b>	<b>26,908</b>	<b>11,353</b>	<b>13,515</b>	<b>10,302</b>	<b>9,684</b>	<b>84,799</b>
<b>General schools, total</b>	<b>154,529</b>	<b>2,941</b>	<b>5,290</b>	<b>17,270</b>	<b>22,933</b>	<b>9,235</b>	<b>11,315</b>	<b>8,826</b>	<b>8,502</b>	<b>68,217</b>
<b>Compulsory schools, total</b>	<b>128,927</b>	<b>2,368</b>	<b>4,228</b>	<b>15,466</b>	<b>20,776</b>	<b>8,138</b>	<b>9,243</b>	<b>8,004</b>	<b>7,933</b>	<b>52,771</b>
Primary schools	71,992	1,289	2,389	8,387	11,050	4,385	5,548	4,347	4,048	30,549
Lower secondary schools	48,956	997	1,654	5,871	8,517	3,237	3,385	3,134	3,182	18,979
Special schools and special (SEN) classes	3,576	23	70	690	339	230	61	270	389	1,504
Pre-vocational schools	4,403	59	115	518	870	286	249	253	314	1,739
<b>Academic secondary schools, total</b>	<b>25,602</b>	<b>573</b>	<b>1,062</b>	<b>1,804</b>	<b>2,157</b>	<b>1,097</b>	<b>2,072</b>	<b>822</b>	<b>569</b>	<b>15,446</b>
Academic secondary schools, full 8 / 9 year cycle	22,574	485	967	1,690	1,931	930	1,680	623	463	13,805
Academic secondary schools, lower level	15,596	308	682	1,197	1,456	694	1,173	400	330	9,356
Academic secondary schools, upper level	6,978	177	285	493	475	236	507	223	133	4,449
Academic secondary schools, separate upper level	2,386	88	71	85	154	113	335	105	106	1,329
Academic secondary schools for people in employment	613	-	24	-	72	54	57	94	-	312
Add-on secondary schools	29	-	-	29	-	-	-	-	-	-
<b>Technical and vocational schools, post-secondary colleges, total</b>	<b>33,599</b>	<b>848</b>	<b>1,431</b>	<b>4,014</b>	<b>3,963</b>	<b>2,113</b>	<b>2,168</b>	<b>1,467</b>	<b>1,181</b>	<b>16,414</b>
<b>Vocational schools for apprentices, total</b>	<b>11,012</b>	<b>148</b>	<b>229</b>	<b>802</b>	<b>1,164</b>	<b>757</b>	<b>457</b>	<b>394</b>	<b>256</b>	<b>6,805</b>
Vocational schools for apprentices	11,007	148	229	802	1,161	757	455	394	256	6,805
Vocational schools for agriculture and forestry for apprentices	5	-	-	-	3	-	2	-	-	-
<b>Intermediate technical and vocational schools, total</b>	<b>8,361</b>	<b>220</b>	<b>325</b>	<b>1,315</b>	<b>1,181</b>	<b>521</b>	<b>644</b>	<b>419</b>	<b>450</b>	<b>3,286</b>
Crafts, technical and arts schools	2,451	26	71	418	222	108	138	70	178	1,220
Schools of business administration	4,728	143	177	742	730	292	362	274	245	1,763
Schools of management and the service industries	963	43	53	127	185	113	97	74	27	244
Schools for social professions	113	-	14	28	2	8	2	-	-	59
Schools for agriculture and forestry	106	8	10	-	42	-	45	1	-	-
<b>Higher technical and vocational colleges, total</b>	<b>14,226</b>	<b>480</b>	<b>877</b>	<b>1,897</b>	<b>1,618</b>	<b>835</b>	<b>1,067</b>	<b>654</b>	<b>475</b>	<b>6,323</b>
Crafts, technical and arts colleges	4,840	122	154	661	296	187	386	187	172	2,675
Colleges of business administration	8,330	322	548	1,086	1,127	569	621	420	291	3,346
Colleges of management and the service industries	1,051	36	174	147	195	79	59	47	12	302
Colleges of agriculture and forestry	5	-	1	3	-	-	1	-	-	-
<b>Post-secondary vocational colleges</b>	<b>-</b>	<b>-</b>	<b>-</b>	<b>-</b>	<b>-</b>	<b>-</b>	<b>-</b>	<b>-</b>	<b>-</b>	<b>-</b>
<b>Institutions for teacher training, total</b>	<b>281</b>	<b>24</b>	<b>12</b>	<b>18</b>	<b>12</b>	<b>5</b>	<b>32</b>	<b>9</b>	<b>1</b>	<b>168</b>
Intermediate schools for teacher training	29	-	-	-	-	-	18	3	-	8
Higher colleges for teacher training	252	24	12	18	12	5	14	6	1	160

<sup>1</sup> Healthcare schools and schools with a statute of their own are not included.

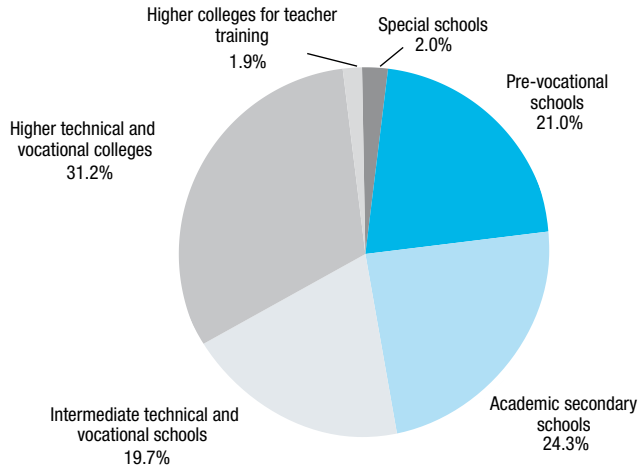
Source: Statistics Austria – Education documentation

Charts table 7:

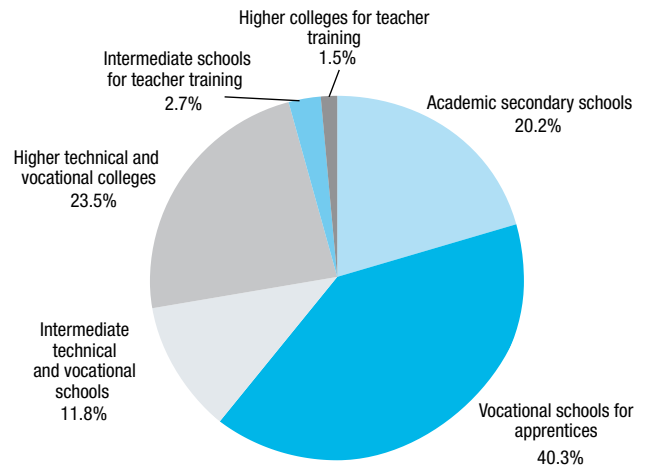
**Proportion of school types at grade 5 school year 2007/08**



**Proportion of school types at grade 9 school year 2007/08**



**Proportion of school types at grade 10 school year 2007/08**



**Table 7:**  
**Proportions of school types, distribution of all pupils/students by type of school, school year 2007/08<sup>1</sup>**

Type of school	Pupils/students, total	Primary schools	Lower secondary schools	Special schools	Pre-vocational schools	Academic secondary schools	Vocational schools for apprentices	Intermediate technical and vocational schools	Higher technical and vocational colleges	Post-secondary technical and vocational colleges	Intermediate schools for teacher training	Higher colleges for teacher training
<b>Total</b>	<b>1,163,978</b>	<b>337,934</b>	<b>249,703</b>	<b>13,148</b>	<b>21,338</b>	<b>205,442</b>	<b>136,191</b>	<b>52,003</b>	<b>135,658</b>	<b>24</b>	<b>3,208</b>	<b>9,329</b>
<i>Proportion %</i>	<i>100.0</i>	<i>29.0</i>	<i>21.5</i>	<i>1.1</i>	<i>1.8</i>	<i>17.6</i>	<i>11.7</i>	<i>4.5</i>	<i>11.7</i>	<i>0.0</i>	<i>0.3</i>	<i>0.8</i>
Pre-primary level	6,752	6,702	-	50	-	-	-	-	-	-	-	-
<i>Proportion %</i>	<i>100.0</i>	<i>99.3</i>	<i>-</i>	<i>0.7</i>	<i>-</i>	<i>-</i>	<i>-</i>	<i>-</i>	<i>-</i>	<i>-</i>	<i>-</i>	<i>-</i>
Grade 1 – 4	334,975	331,098	-	3,877	-	-	-	-	-	-	-	-
<i>Proportion %</i>	<i>100.0</i>	<i>98.8</i>	<i>-</i>	<i>1.2</i>	<i>-</i>	<i>-</i>	<i>-</i>	<i>-</i>	<i>-</i>	<i>-</i>	<i>-</i>	<i>-</i>
Grade 1	82,818	82,128	-	690	-	-	-	-	-	-	-	-
<i>Proportion %</i>	<i>100.0</i>	<i>99.2</i>	<i>-</i>	<i>0.8</i>	<i>-</i>	<i>-</i>	<i>-</i>	<i>-</i>	<i>-</i>	<i>-</i>	<i>-</i>	<i>-</i>
Grade 4	86,285	84,991	-	1,294	-	-	-	-	-	-	-	-
<i>Proportion %</i>	<i>100.0</i>	<i>98.5</i>	<i>-</i>	<i>1.5</i>	<i>-</i>	<i>-</i>	<i>-</i>	<i>-</i>	<i>-</i>	<i>-</i>	<i>-</i>	<i>-</i>
Grade 5 – 8	375,756	134	249,703	7,184	241	117,979	-	515	-	-	-	-
<i>Proportion %</i>	<i>100.0</i>	<i>0.0</i>	<i>66.5</i>	<i>1.9</i>	<i>0.1</i>	<i>31.4</i>	<i>-</i>	<i>0.1</i>	<i>-</i>	<i>-</i>	<i>-</i>	<i>-</i>
Grade 5	91,319	53	58,731	1,545	-	30,990	-	-	-	-	-	-
<i>Proportion %</i>	<i>100.0</i>	<i>0.1</i>	<i>64.3</i>	<i>1.7</i>	<i>-</i>	<i>33.9</i>	<i>-</i>	<i>-</i>	<i>-</i>	<i>-</i>	<i>-</i>	<i>-</i>
Grade 8	98,245	32	66,970	2,000	28	28,700	-	515	-	-	-	-
<i>Proportion %</i>	<i>100.0</i>	<i>0.0</i>	<i>68.2</i>	<i>2.0</i>	<i>0.0</i>	<i>29.2</i>	<i>-</i>	<i>0.5</i>	<i>-</i>	<i>-</i>	<i>-</i>	<i>-</i>
From grade 9	446,495	-	-	2,037	21,097	87,463	136,191	51,488	135,658	24	3,208	9,329
<i>Proportion %</i>	<i>100.0</i>	<i>-</i>	<i>-</i>	<i>0.5</i>	<i>4.7</i>	<i>19.6</i>	<i>30.5</i>	<i>11.5</i>	<i>30.4</i>	<i>0.0</i>	<i>0.7</i>	<i>2.1</i>
Grade 9	100,690	-	-	2,037	21,097	24,425	-	19,868	31,374	-	-	1,889
<i>Proportion %</i>	<i>100.0</i>	<i>-</i>	<i>-</i>	<i>2.0</i>	<i>21.0</i>	<i>24.3</i>	<i>-</i>	<i>19.7</i>	<i>31.2</i>	<i>-</i>	<i>-</i>	<i>1.9</i>
Grade 10	111,058	-	-	-	-	22,448	44,716	13,065	26,125	-	3,025	1,679
<i>Proportion %</i>	<i>100.0</i>	<i>-</i>	<i>-</i>	<i>-</i>	<i>-</i>	<i>20.2</i>	<i>40.3</i>	<i>11.8</i>	<i>23.5</i>	<i>-</i>	<i>2.7</i>	<i>1.5</i>
Grade 12	85,595	-	-	-	-	18,608	37,937	2,525	24,928	-	-	1,597
<i>Proportion %</i>	<i>100.0</i>	<i>-</i>	<i>-</i>	<i>-</i>	<i>-</i>	<i>21.7</i>	<i>44.3</i>	<i>2.9</i>	<i>29.1</i>	<i>-</i>	<i>-</i>	<i>1.9</i>

1 Healthcare schools and schools with a statute of their own are not included.

Source: Statistics Austria - Education documentation, BMUKK calculations

**Table 7a:**  
**Proportions of school types, distribution of male pupils/students by type of school, school year 2007/08<sup>1</sup>**

Type of school	Male pupils/students, total	Primary schools	Lower secondary schools	Special schools	Pre-vocational schools	Academic secondary schools	Vocational schools for apprentices	Intermediate technical and vocational schools	Higher technical and vocational colleges	Post-secondary technical and vocational colleges	Intermediate schools for teacher training	Higher colleges for teacher training
<b>Total</b>	<b>607,247</b>	<b>174,860</b>	<b>131,013</b>	<b>8,392</b>	<b>13,405</b>	<b>94,487</b>	<b>89,180</b>	<b>26,232</b>	<b>66,869</b>	<b>7</b>	<b>2,347</b>	<b>455</b>
<i>Proportion %</i>	<i>100.0</i>	<i>28.8</i>	<i>21.6</i>	<i>1.4</i>	<i>2.2</i>	<i>15.6</i>	<i>14.7</i>	<i>4.3</i>	<i>11.0</i>	<i>0.0</i>	<i>0.4</i>	<i>0.1</i>
Pre-primary level	4,236	4,202	-	34	-	-	-	-	-	-	-	-
<i>Proportion %</i>	<i>100.0</i>	<i>99.2</i>	<i>-</i>	<i>0.8</i>	<i>-</i>	<i>-</i>	<i>-</i>	<i>-</i>	<i>-</i>	<i>-</i>	<i>-</i>	<i>-</i>
Grade 1 – 4	173,068	170,591	-	2,477	-	-	-	-	-	-	-	-
<i>Proportion %</i>	<i>100.0</i>	<i>98.6</i>	<i>-</i>	<i>1.4</i>	<i>-</i>	<i>-</i>	<i>-</i>	<i>-</i>	<i>-</i>	<i>-</i>	<i>-</i>	<i>-</i>
Grade 1	43,193	42,753	-	440	-	-	-	-	-	-	-	-
<i>Proportion %</i>	<i>100.0</i>	<i>99.0</i>	<i>-</i>	<i>1.0</i>	<i>-</i>	<i>-</i>	<i>-</i>	<i>-</i>	<i>-</i>	<i>-</i>	<i>-</i>	<i>-</i>
Grade 4	44,477	43,660	-	817	-	-	-	-	-	-	-	-
<i>Proportion %</i>	<i>100.0</i>	<i>98.2</i>	<i>-</i>	<i>1.8</i>	<i>-</i>	<i>-</i>	<i>-</i>	<i>-</i>	<i>-</i>	<i>-</i>	<i>-</i>	<i>-</i>
Grade 5 – 8	193,223	67	131,013	4,663	181	56,868	-	431	-	-	-	-
<i>Proportion %</i>	<i>100.0</i>	<i>0.0</i>	<i>67.8</i>	<i>2.4</i>	<i>0.1</i>	<i>29.4</i>	<i>-</i>	<i>0.2</i>	<i>-</i>	<i>-</i>	<i>-</i>	<i>-</i>
Grade 5	46,896	29	30,864	1,009	-	14,994	-	-	-	-	-	-
<i>Proportion %</i>	<i>100.0</i>	<i>0.1</i>	<i>65.8</i>	<i>2.2</i>	<i>-</i>	<i>32.0</i>	<i>-</i>	<i>-</i>	<i>-</i>	<i>-</i>	<i>-</i>	<i>-</i>
Grade 8	50,500	17	35,041	1,280	19	13,712	-	431	-	-	-	-
<i>Proportion %</i>	<i>100.0</i>	<i>0.0</i>	<i>69.4</i>	<i>2.5</i>	<i>0.0</i>	<i>27.2</i>	<i>-</i>	<i>0.9</i>	<i>-</i>	<i>-</i>	<i>-</i>	<i>-</i>
From grade 9	236,720	-	-	1,218	13,224	37,619	89,180	25,801	66,869	7	2,347	455
<i>Proportion %</i>	<i>100.0</i>	<i>-</i>	<i>-</i>	<i>0.5</i>	<i>5.6</i>	<i>15.9</i>	<i>37.7</i>	<i>10.9</i>	<i>28.2</i>	<i>0.0</i>	<i>1.0</i>	<i>0.2</i>
Grade 9	49,817	-	-	1,218	13,224	10,660	-	8,896	15,725	-	-	94
<i>Proportion %</i>	<i>100.0</i>	<i>-</i>	<i>-</i>	<i>2.4</i>	<i>26.5</i>	<i>21.4</i>	<i>-</i>	<i>17.9</i>	<i>31.6</i>	<i>-</i>	<i>-</i>	<i>0.2</i>
Grade 10	58,510	-	-	-	-	9,668	28,108	5,722	12,738	-	2,210	64
<i>Proportion %</i>	<i>100.0</i>	<i>-</i>	<i>-</i>	<i>-</i>	<i>-</i>	<i>16.5</i>	<i>48.0</i>	<i>9.8</i>	<i>21.8</i>	<i>-</i>	<i>3.8</i>	<i>0.1</i>
Grade 12	46,041	-	-	-	-	7,756	23,933	1,990	12,314	-	-	48
<i>Proportion %</i>	<i>100.0</i>	<i>-</i>	<i>-</i>	<i>-</i>	<i>-</i>	<i>16.8</i>	<i>52.0</i>	<i>4.3</i>	<i>26.7</i>	<i>-</i>	<i>-</i>	<i>0.1</i>

<sup>1</sup> Healthcare schools and schools with a statute of their own are not included.

Source: Statistics Austria - Education documentation, BMUKK calculations

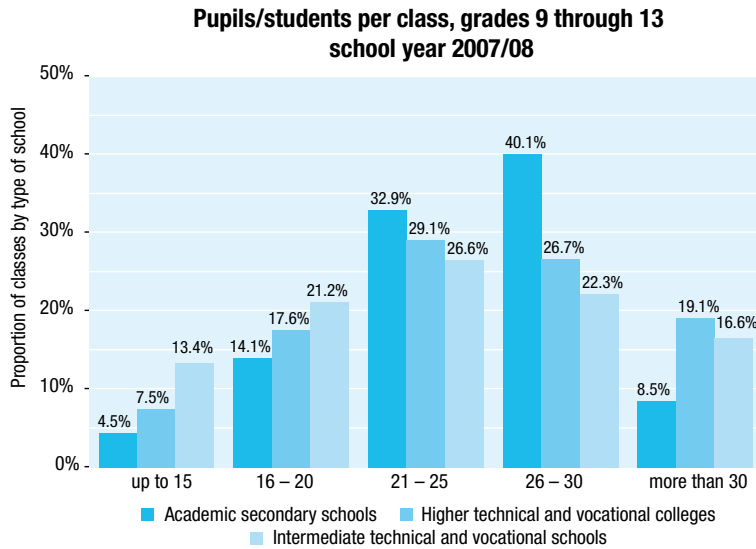
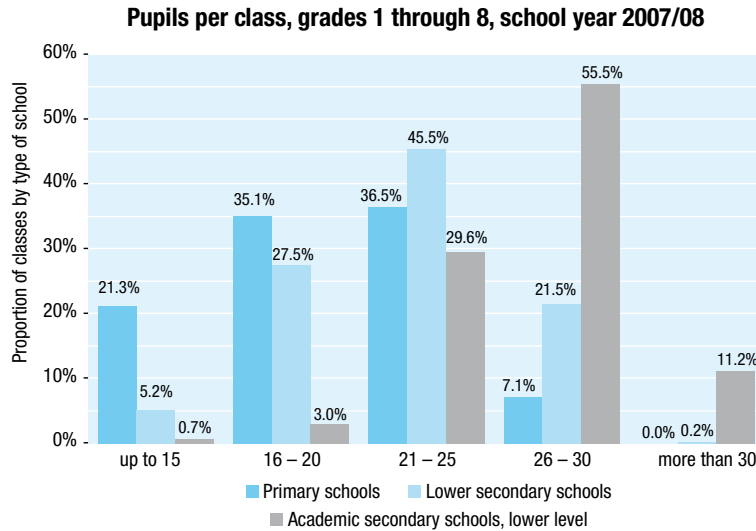
**Table 7b:**  
**Proportions of school types, distribution of female pupils/students by type of school, school year 2007/08<sup>1</sup>**

Type of school	Female pupils/students, total	Primary schools	Lower secondary schools	Special schools	Pre-vocational schools	Academic secondary schools	Vocational schools for apprentices	Intermediate technical and vocational schools	Higher technical and vocational colleges	Post-secondary technical and vocational colleges	Intermediate schools for teacher training	Higher colleges for teacher training
<b>Total</b>	<b>556,731</b>	<b>163,074</b>	<b>118,690</b>	<b>4,756</b>	<b>7,933</b>	<b>110,955</b>	<b>47,011</b>	<b>25,771</b>	<b>68,789</b>	<b>17</b>	<b>861</b>	<b>8,874</b>
<i>Proportion %</i>	<i>100.0</i>	<i>29.3</i>	<i>21.3</i>	<i>0.9</i>	<i>1.4</i>	<i>19.9</i>	<i>8.4</i>	<i>4.6</i>	<i>12.4</i>	<i>0.0</i>	<i>0.2</i>	<i>1.6</i>
Pre-primary level	2,516	2,500	-	16	-	-	-	-	-	-	-	-
<i>Proportion %</i>	<i>100.0</i>	<i>99.4</i>	<i>-</i>	<i>0.6</i>	<i>-</i>	<i>-</i>	<i>-</i>	<i>-</i>	<i>-</i>	<i>-</i>	<i>-</i>	<i>-</i>
Grade 1 – 4	161,907	160,507	-	1,400	-	-	-	-	-	-	-	-
<i>Proportion %</i>	<i>100.0</i>	<i>99.1</i>	<i>-</i>	<i>0.9</i>	<i>-</i>	<i>-</i>	<i>-</i>	<i>-</i>	<i>-</i>	<i>-</i>	<i>-</i>	<i>-</i>
Grade 1	39,625	39,375	-	250	-	-	-	-	-	-	-	-
<i>Proportion %</i>	<i>100.0</i>	<i>99.4</i>	<i>-</i>	<i>0.6</i>	<i>-</i>	<i>-</i>	<i>-</i>	<i>-</i>	<i>-</i>	<i>-</i>	<i>-</i>	<i>-</i>
Grade 4	41,808	41,331	-	477	-	-	-	-	-	-	-	-
<i>Proportion %</i>	<i>100.0</i>	<i>98.9</i>	<i>-</i>	<i>1.1</i>	<i>-</i>	<i>-</i>	<i>-</i>	<i>-</i>	<i>-</i>	<i>-</i>	<i>-</i>	<i>-</i>
Grade 5 – 8	182,533	67	118,690	2,521	60	61,111	-	84	-	-	-	-
<i>Proportion %</i>	<i>100.0</i>	<i>0.0</i>	<i>65.0</i>	<i>1.4</i>	<i>0.0</i>	<i>33.5</i>	<i>-</i>	<i>0.0</i>	<i>-</i>	<i>-</i>	<i>-</i>	<i>-</i>
Grade 5	44,423	24	27,867	536	-	15,996	-	-	-	-	-	-
<i>Proportion %</i>	<i>100.0</i>	<i>0.1</i>	<i>62.7</i>	<i>1.2</i>	<i>-</i>	<i>36.0</i>	<i>-</i>	<i>-</i>	<i>-</i>	<i>-</i>	<i>-</i>	<i>-</i>
Grade 8	47,745	15	31,929	720	9	14,988	-	84	-	-	-	-
<i>Proportion %</i>	<i>100.0</i>	<i>0.0</i>	<i>66.9</i>	<i>1.5</i>	<i>0.0</i>	<i>31.4</i>	<i>-</i>	<i>0.2</i>	<i>-</i>	<i>-</i>	<i>-</i>	<i>-</i>
From grade 9	209,775	-	-	819	7,873	49,844	47,011	25,687	68,789	17	861	8,874
<i>Proportion %</i>	<i>100.0</i>	<i>-</i>	<i>-</i>	<i>0.4</i>	<i>3.8</i>	<i>23.8</i>	<i>22.4</i>	<i>12.2</i>	<i>32.8</i>	<i>0.0</i>	<i>0.4</i>	<i>4.2</i>
Grade 9	50,873	-	-	819	7,873	13,765	-	10,972	15,649	-	-	1,795
<i>Proportion %</i>	<i>100.0</i>	<i>-</i>	<i>-</i>	<i>1.6</i>	<i>15.5</i>	<i>27.1</i>	<i>-</i>	<i>21.6</i>	<i>30.8</i>	<i>-</i>	<i>-</i>	<i>3.5</i>
Grade 10	52,548	-	-	-	-	12,780	16,608	7,343	13,387	-	815	1,615
<i>Proportion %</i>	<i>100.0</i>	<i>-</i>	<i>-</i>	<i>-</i>	<i>-</i>	<i>24.3</i>	<i>31.6</i>	<i>14.0</i>	<i>25.5</i>	<i>-</i>	<i>1.6</i>	<i>3.1</i>
Grade 12	39,554	-	-	-	-	10,852	14,004	535	12,614	-	-	1,549
<i>Proportion %</i>	<i>100.0</i>	<i>-</i>	<i>-</i>	<i>-</i>	<i>-</i>	<i>27.4</i>	<i>35.4</i>	<i>1.4</i>	<i>31.9</i>	<i>-</i>	<i>-</i>	<i>3.9</i>

1 Healthcare schools and schools with a statute of their own are not included.

Source: Statistics Austria - Education documentation, BMUKK calculations

Charts table 8:





**Table 8:**  
**Class sizes, school year 2007/08<sup>1</sup>**

Type of school	Number of classes, total	Number of classes with . . . pupils/students						Average class size
		up to 10	11 – 15	16 – 20	21 – 25	26 – 30	more than 30	
<b>All mainstream schools<sup>2</sup></b>	<b>54,045</b>	<b>2,632</b>	<b>5,533</b>	<b>13,634</b>	<b>18,595</b>	<b>11,211</b>	<b>2,440</b>	<b>21.5</b>
<b>General schools, total</b>	<b>39,852</b>	<b>2,215</b>	<b>4,305</b>	<b>10,716</b>	<b>14,808</b>	<b>7,076</b>	<b>732</b>	<b>20.8</b>
<b>Compulsory schools, total</b>	<b>31,539</b>	<b>2,147</b>	<b>4,003</b>	<b>9,548</b>	<b>12,076</b>	<b>3,741</b>	<b>24</b>	<b>19.7</b>
Primary schools	17,516	532	3,191	6,142	6,402	1,248	1	19.3
Lower secondary schools	11,249	34	554	3,092	5,122	2,424	23	22.2
Special schools and special (SEN) classes	1,770	1,575	179	13	3	-	-	7.0
Pre-vocational schools	1,004	6	79	301	549	69	-	21.3
<b>Academic secondary schools, total</b>	<b>8,313</b>	<b>68</b>	<b>302</b>	<b>1,168</b>	<b>2,732</b>	<b>3,335</b>	<b>708</b>	<b>24.7</b>
Academic secondary schools, full 8 / 9 year cycle	7,109	47	212	889	2,344	3,047	570	25.0
Academic secondary schools, lower level	4,400	7	24	133	1,303	2,442	491	26.7
Academic secondary schools, upper level	2,709	40	188	756	1,041	605	79	22.0
Academic secondary schools, separate upper level	1,033	16	73	240	337	266	101	23.1
Academic secondary schools for people in employment	138	4	11	34	36	16	37	25.1
Add-on secondary schools	33	1	6	5	15	6	-	20.9
<b>Technical and vocational schools and post-secondary colleges, total</b>	<b>13,841</b>	<b>415</b>	<b>1,221</b>	<b>2,882</b>	<b>3,703</b>	<b>3,991</b>	<b>1,629</b>	<b>23.4</b>
<b>Vocational schools for apprentices, total</b>	<b>6,120</b>	<b>262</b>	<b>663</b>	<b>1,443</b>	<b>1,512</b>	<b>2,029</b>	<b>211</b>	<b>22.3</b>
Vocational schools for apprentices	6,075	260	653	1,425	1,502	2,024	211	22.3
Vocational schools for agriculture and forestry for apprentices	45	2	10	18	10	5	-	18.6
<b>Intermediate technical and vocational schools, total</b>	<b>2,229</b>	<b>91</b>	<b>208</b>	<b>472</b>	<b>592</b>	<b>496</b>	<b>370</b>	<b>23.3</b>
Crafts, technical and arts schools	750	48	94	181	178	142	107	22.1
Schools of business administration	510	16	44	112	151	113	74	23.3
Schools of management and the service industries	396	13	37	83	116	95	52	23.1
Schools for social professions	56	-	1	7	15	22	11	26.0
Schools for agriculture and forestry	517	14	32	89	132	124	126	25.1
<b>Higher technical and vocational colleges, total</b>	<b>5,491</b>	<b>62</b>	<b>350</b>	<b>967</b>	<b>1,598</b>	<b>1,466</b>	<b>1,048</b>	<b>24.7</b>
Crafts, technical and arts colleges	2,462	48	196	459	673	585	501	24.3
Colleges of business administration	1,795	7	110	330	606	475	267	24.4
Colleges of management and the service industries	1,109	5	41	171	309	365	218	25.4
Colleges of agriculture and forestry	125	2	3	7	10	41	62	29.1
<b>Post-secondary vocational colleges</b>	<b>1</b>	<b>-</b>	<b>-</b>	<b>-</b>	<b>1</b>	<b>-</b>	<b>-</b>	<b>24.0</b>
<b>Institutions for teacher training, total<sup>2</sup></b>	<b>352</b>	<b>2</b>	<b>7</b>	<b>36</b>	<b>84</b>	<b>144</b>	<b>79</b>	<b>26.5</b>
Higher colleges for teacher training	352	2	7	36	84	144	79	26.5

1 Healthcare schools and schools with a statute of their own are not included.

2 Without schools for physical education teachers and sports instructors training.

Source: Statistics Austria - Education documentation, BMUKK calculations

**Table 9:**  
**Teaching staff by school type and federal province, school year 2007/08<sup>1</sup>**

Type of school	Austria, total		Burgenland		Carinthia		Lower Austria		Upper Austria	
	All	of which female	All	of which female	All	of which female	All	of which female	All	of which female
<b>All mainstream schools<sup>1</sup></b>	<b>119,231</b>	<b>82,988</b>	<b>3,822</b>	<b>2,463</b>	<b>8,413</b>	<b>5,839</b>	<b>21,330</b>	<b>15,229</b>	<b>21,815</b>	<b>15,166</b>
General schools, total	91,855	69,418	2,720	1,929	6,331	4,819	16,503	12,904	16,800	12,735
General compulsory schools	71,499	56,975	2,117	1,583	5,021	4,046	13,447	11,057	13,893	11,054
Primary schools	31,768	28,566	1,002	839	2,402	2,112	5,851	5,415	5,967	5,382
Lower secondary schools	31,201	21,812	978	662	2,161	1,586	6,019	4,378	6,706	4,772
Special schools and special (SEN) classes	6,316	5,439	78	62	348	285	1,155	1,034	763	652
Pre-vocational schools	2,214	1,158	59	20	110	63	422	230	457	248
Academic secondary schools	20,356	12,443	603	346	1,310	773	3,056	1,847	2,907	1,681
Technical and vocational schools and post-secondary colleges, total	26,014	12,455	1,049	497	2,018	965	4,613	2,155	4,764	2,227
Vocational schools for apprentices <sup>2</sup>	4,766	1,559	108	27	325	89	670	214	952	310
Technical and vocational schools and colleges, total	21,200	10,865	941	470	1,693	876	3,943	1,941	3,812	1,917
Technical and crafts schools and colleges (in a narrower sense)	6,917	1,374	300	52	497	83	1,238	196	1,170	204
Schools and colleges of tourism	1,070	540	-	-	45	17	191	95	185	88
Schools and colleges of business administration	5,572	3,496	334	212	415	264	961	611	887	521
Schools and colleges of management and the service industries <sup>3</sup>	5,001	3,950	280	199	446	337	961	736	1,019	804
Schools and colleges for social professions	328	269	-	-	38	33	111	97	-	-
Schools and colleges for agriculture and forestry <sup>4</sup>	2,312	1,236	27	7	252	142	481	206	551	300
Post-secondary vocational colleges	48	31	-	-	-	-	-	-	-	-
<b>Institutions for teacher training, total</b>	<b>1,362</b>	<b>1,115</b>	<b>53</b>	<b>37</b>	<b>64</b>	<b>55</b>	<b>214</b>	<b>170</b>	<b>251</b>	<b>204</b>
Higher teacher training colleges	1,362	1,115	53	37	64	55	214	170	251	204

1 Including staff on maternity or educational leave and part-time staff; without teachers at schools for healthcare and nursing, schools for the training of physical education teachers and sports instructors as well as other schools with a statute of their own.

2 Not including teachers at schools for agriculture and forestry for apprentices.

3 Including teachers at schools of clothing and crafts.

4 Including teachers at schools for agriculture and forestry for apprentices.

Source: Statistics Austria, BMUKK

**Table 9 (continued):  
Teaching staff by school type and federal province, school year 2007/08<sup>1</sup>**

Type of school	Salzburg		Styria		Tyrol		Vorarlberg		Vienna	
	All	of which female	All	of which female	All	of which female	All	of which female	All	of which female
<b>All mainstream schools<sup>1</sup></b>	<b>8,649</b>	<b>5,917</b>	<b>15,690</b>	<b>10,886</b>	<b>11,044</b>	<b>7,088</b>	<b>6,259</b>	<b>3,990</b>	<b>22,209</b>	<b>16,410</b>
<b>General schools, total</b>	<b>6,491</b>	<b>4,848</b>	<b>11,961</b>	<b>8,941</b>	<b>8,519</b>	<b>5,864</b>	<b>4,971</b>	<b>3,417</b>	<b>17,559</b>	<b>13,961</b>
General compulsory schools	5,108	4,025	9,268	7,270	7,054	5,089	4,095	2,986	11,496	9,865
Primary schools	2,178	1,952	4,106	3,727	3,022	2,513	1,883	1,579	5,357	5,047
Lower secondary schools	2,199	1,519	4,580	3,121	3,217	2,013	1,709	1,036	3,632	2,725
Special schools and special (SEN) classes	533	449	333	292	509	417	376	317	2,221	1,931
Pre-vocational schools	198	105	249	130	306	146	127	54	286	162
Academic secondary schools	1,383	823	2,693	1,671	1,465	775	876	431	6,063	4,096
<b>Technical and vocational schools and post-secondary colleges, total</b>	<b>2,080</b>	<b>1,007</b>	<b>3,491</b>	<b>1,754</b>	<b>2,382</b>	<b>1,105</b>	<b>1,220</b>	<b>517</b>	<b>4,397</b>	<b>2,228</b>
Vocational schools for apprentices <sup>2</sup>	358	129	672	198	519	164	273	66	889	362
<b>Technical and vocational schools and colleges, total</b>	<b>1,721</b>	<b>878</b>	<b>2,819</b>	<b>1,556</b>	<b>1,863</b>	<b>941</b>	<b>945</b>	<b>450</b>	<b>3,463</b>	<b>1,836</b>
Technical and crafts schools and colleges (in a narrower sense)	442	61	879	199	558	113	308	62	1,525	404
Schools and colleges of tourism	137	64	53	23	205	112	60	32	194	109
Schools and colleges of business administration	418	255	757	489	526	289	329	176	945	679
Schools and colleges of management and the service industries <sup>3</sup>	478	374	589	499	337	270	207	165	684	566
Schools and colleges for social professions	64	46	41	35	-	-	-	-	74	58
Schools and colleges for agriculture and forestry <sup>4</sup>	182	78	500	311	237	157	41	15	41	20
Post-secondary vocational colleges	1	-	-	-	-	-	2	1	45	30
<b>Institutions for teacher training, total</b>	<b>78</b>	<b>62</b>	<b>238</b>	<b>191</b>	<b>143</b>	<b>119</b>	<b>68</b>	<b>56</b>	<b>253</b>	<b>221</b>
Higher teacher training colleges	78	62	238	191	143	119	68	56	253	221

1 Including staff on maternity or educational leave and part-time staff; without teachers at schools for healthcare and nursing, schools for the training of physical education teachers and sports instructors as well as other schools with a statute of their own.

2 Not including teachers at schools for agriculture and forestry for apprentices.

3 Including teachers at schools of clothing and crafts.

4 Including teachers at schools for agriculture and forestry for apprentices.

Source: Statistics Austria, BMUKK

**Table 10:**  
**Recipients of student support and/or accommodation grants by support category,**  
**type of school and federal province, school year 2006/07**

Support category / Type of school <sup>1</sup>	Austria, total	Burgen- land	Carinthia	Lower Austria	Upper Austria	Salz- burg	Styria	Tyrol	Vorarl- berg	Vienna
<b>All support categories and school types</b>	<b>27,214</b>	<b>809</b>	<b>2,672</b>	<b>6,059</b>	<b>5,421</b>	<b>1,904</b>	<b>4,292</b>	<b>2,987</b>	<b>606</b>	<b>2,464</b>
<b>Student support</b>	<b>17,467</b>	<b>649</b>	<b>1,634</b>	<b>3,798</b>	<b>3,459</b>	<b>938</b>	<b>2,602</b>	<b>1,637</b>	<b>465</b>	<b>2,285</b>
Pre-vocational schools	1	-	-	-	-	-	-	-	-	1
Academic secondary schools	3,667	102	333	609	536	186	608	369	86	838
Technical and vocational schools and colleges	12,877	522	1,263	2,988	2,756	712	1,811	1,200	355	1,270
Teacher training institutions	779	25	38	162	167	31	170	57	24	105
Schools for paramedical training	79	-	-	35	-	-	12	9	-	23
<b>Accommodation grant</b>	<b>3,257</b>	<b>52</b>	<b>348</b>	<b>697</b>	<b>665</b>	<b>316</b>	<b>623</b>	<b>486</b>	<b>57</b>	<b>13</b>
Pre-vocational schools	-	-	-	-	-	-	-	-	-	-
Academic secondary schools	56	1	2	19	4	5	13	9	1	2
Technical and vocational schools and colleges	3,163	43	344	672	660	307	600	472	56	9
Teacher training institutions	35	8	2	6	1	4	9	4	-	1
Schools for paramedical training	2	-	-	-	-	-	1	-	-	1
<b>Student support and accommodation grant combined</b>	<b>6,444</b>	<b>108</b>	<b>690</b>	<b>1,532</b>	<b>1,297</b>	<b>644</b>	<b>1,067</b>	<b>864</b>	<b>76</b>	<b>166</b>
Pre-vocational schools	-	-	-	-	-	-	-	-	-	-
Academic secondary schools	197	6	14	51	27	25	21	44	3	6
Technical and vocational schools and colleges	5,964	78	656	1,409	1,233	609	1,018	754	73	134
Teacher training institutions	233	24	20	64	37	7	20	48	-	13
Schools for paramedical training	31	-	-	3	-	-	8	8	-	12
<b>Special student support<sup>2</sup></b>	<b>46</b>	<b>-</b>	<b>-</b>	<b>32</b>	<b>-</b>	<b>6</b>	<b>-</b>	<b>-</b>	<b>8</b>	<b>-</b>
Academic secondary schools	6	-	-	-	-	6	-	-	-	-
Technical and vocational schools and colleges	40	-	-	32	-	-	-	-	8	-

1 Including types for people in work.

2 Only automatically processed applications are shown here; overall, some 200 such administrative decisions have been issued.

Source: BMUKK

**Table 11:**  
**Recipients of student support and/or accommodation grants: average (annual) amount of support in €**  
**by support category, type of school and federal province, school year 2006/07**

Support category / Type of school <sup>1</sup>	Austria, total	Burgen- land	Carinthia	Lower Austria	Upper Austria	Salz- burg	Styria	Tyrol	Vorarl- berg	Vienna
<b>Average support, all categories</b>	<b>1,073</b>	<b>886</b>	<b>1,117</b>	<b>1,115</b>	<b>1,056</b>	<b>1,172</b>	<b>1,099</b>	<b>1,083</b>	<b>983</b>	<b>899</b>
<b>Student support</b>	<b>780</b>	<b>761</b>	<b>771</b>	<b>802</b>	<b>763</b>	<b>771</b>	<b>773</b>	<b>743</b>	<b>797</b>	<b>819</b>
Pre-vocational schools	1,546	-	-	-	-	-	-	-	-	1,546
Academic secondary schools	798	768	780	831	762	804	800	742	758	835
Technical and vocational schools and colleges	774	766	768	797	761	764	766	739	811	798
Teacher training institutions	773	635	797	799	803	687	737	749	723	821
Schools for paramedical training	1,014	-	-	813	-	-	1,184	1,182	-	1,166
<b>Accommodation grant</b>	<b>1,037</b>	<b>862</b>	<b>1,024</b>	<b>1,026</b>	<b>1,047</b>	<b>1,051</b>	<b>1,061</b>	<b>1,028</b>	<b>1,150</b>	<b>832</b>
Pre-vocational schools	-	-	-	-	-	-	-	-	-	-
Academic secondary schools	908	236	1,071	868	940	797	954	931	1,288	861
Technical and vocational schools and colleges	1,042	885	1,024	1,032	1,047	1,061	1,064	1,037	1,148	820
Teacher training institutions	931	797	975	956	1,265	914	1,064	810	-	497
Schools for paramedical training	957	-	-	-	-	-	1,078	92	-	1,701
<b>Student support and accommodation grant combined</b>	<b>1,920</b>	<b>1,670</b>	<b>2,024</b>	<b>1,980</b>	<b>1,882</b>	<b>1,882</b>	<b>1,943</b>	<b>1,792</b>	<b>2,003</b>	<b>2,016</b>
Pre-vocational schools	-	-	-	-	-	-	-	-	-	-
Academic secondary schools	1,824	2,161	1,941	1,850	1,841	1,984	1,814	1,702	2,089	1,054
Technical and vocational schools and colleges	1,920	1,616	2,024	1,982	1,880	1,877	1,949	1,782	2,000	2,010
Teacher training institutions	1,921	1,725	2,075	2,047	1,993	1,694	1,798	1,848	-	1,808
Schools for paramedical training	2,476	-	-	1,805	-	-	1,951	2,820	-	2,765
<b>Special student support<sup>2</sup></b>	<b>2,339</b>	<b>-</b>	<b>-</b>	<b>2,437</b>	<b>-</b>	<b>2,150</b>	<b>-</b>	<b>-</b>	<b>2,089</b>	<b>-</b>
Academic secondary schools	2,150	-	-	-	-	2,150	-	-	-	-
Technical and vocational schools and colleges	2,368	-	-	2,437	-	-	-	-	2,089	-

1 Including types for people in work.

2 Calculation is based on automatically processed applications only.

Source: BMUKK

**Table 12:**  
**Students in graduation classes of upper secondary schools by school type and gender,**  
**graduation years 1990, 2000, 2005, 2007 and 2008<sup>1</sup>**

Type of school		Graduation year				
		2008	2007	2005	2000	1990
All mainstream schools	All	41,868	41,522	38,802	37,796	31,744
	Females	23,596	23,373	21,695	21,269	16,651
	Males	18,272	18,149	17,107	16,527	15,093
Academic secondary schools, total	All	18,154	17,914	16,113	17,255	15,473
	Females	10,625	10,522	9,504	10,131	8,305
	Males	7,529	7,392	6,609	7,124	7,168
Academic secondary schools (full 8/9 year cycle) <sup>2</sup>	All	12,707	12,535	11,348	12,348	11,024
	Females	7,183	7,117	6,557	6,980	5,820
	Males	5,524	5,418	4,791	5,368	5,204
Academic secondary schools, separate upper level	All	4,953	4,817	4,395	4,517	4,087
	Females	3,171	3,086	2,729	2,944	2,357
	Males	1,782	1,731	1,666	1,573	1,730
Academic secondary schools (special sub-types) <sup>3</sup>	All	494	562	370	390	362
	Females	271	319	218	207	128
	Males	223	243	152	183	234
Technical and vocational colleges, total <sup>4</sup>	All	22,252	22,198	21,322	18,955	15,411
	Females	11,554	11,483	10,846	9,599	7,505
	Males	10,698	10,715	10,476	9,356	7,906
Technical and crafts colleges <sup>5</sup>	All	9,295	9,706	9,648	7,794	6,451
	Females	2,222	2,299	2,219	1,627	1,108
	Males	7,073	7,407	7,429	6,167	5,343
Colleges of business administration	All	7,432	7,231	6,843	6,741	6,040
	Females	4,579	4,611	4,458	4,103	3,849
	Males	2,853	2,620	2,385	2,638	2,191
Colleges of management and service industries	All	4,798	4,601	4,158	3,796	2,402
	Females	4,437	4,294	3,904	3,599	2,390
	Males	361	307	254	197	12
Colleges of agriculture and forestry	All	727	660	673	624	518
	Females	316	279	265	270	158
	Males	411	381	408	354	360
Colleges for teacher training <sup>6</sup>	All	1,462	1,410	1,367	1,586	860
	Females	1,417	1,368	1,345	1,539	841
	Males	45	42	22	47	19

- 1 Austrian and foreign students in graduation classes of secondary schools with „Matura“ secondary school leaving certificate, without VET courses; data as at October of previous year. 2005: students in graduation classes, preliminary figures.
- 2 Academic secondary schools and secondary schools of management and the service industries.
- 3 Add-on academic secondary schools and academic secondary schools for people in work.
- 4 Including special types (for people in employment, add-on courses).
- 5 Including colleges of tourism and colleges of the clothing trades.
- 6 Nursery teacher training institutions and institutions for social pedagogy.

Source: Statistics Austria - Education documentation, BMUKK calculations

**Table 13:**  
**Reference levels of European average performance (*Benchmarks*) in education and training, 2007**

#### Early school leavers

By 2010, an EU average rate of no more than 10% early school leavers should be achieved.

	2000	2007	EU rank
Average EU-27	17.6%	14.8%	
Austria	10.2%	10.9%	6 (of 26)

Note: Definition „early school leavers“: Share of the population aged 18-24 with only lower secondary education and not in education or training.

#### Completion of upper secondary education

By 2010, at least 85% of 22 year olds in the EU should have completed upper secondary education.

	2000	2007	EU rank
Average EU-27	76.6%	78.1%	
Austria	85.1%	84.1%	10 (of 27)

Note: Data refer to the percentage of the 20 to 24 year old population having completed at least upper secondary education.

#### Graduations in mathematics, science and technology

By 2010, the total number of graduates in mathematics, science and technology (MST) should increase by at least 15% as compared to 2000 while, at the same time, the level of gender imbalance should decrease.

	2000	2006	EU rank
EU-27, total	686,000	872,000	
Austria	7,500	11,300	8 (of 26)

Note: Number of tertiary graduates in MST; calculation of the rank within the EU is based on average annual growth rates.

#### Adults' participation in lifelong learning

By 2010, the EU average level of adults' participation in lifelong learning, should be at least 12.5%.

	2000	2007	EU rank
Average EU-27	7.1%	9.7%	
Austria	8.3%	12.8%	7 (of 27)

Note: Data refer to the percentage of the population aged 25-64 participating in formal or non-formal education and training programmes within four weeks prior to the survey.

#### Key competences

By 2010, the percentage of low-achieving 15 year olds in reading literacy in the EU should have decreased by at least 20% compared to the year 2000.

	2000	2006	EU rank
Average EU-27	21.3%	24.1%	
Austria	19.3%	21.5%	14 (of 25)

Note: Data refer to the percentage of 15 year old pupils with reading literacy proficiency level 1 and lower in the PISA reading literacy scale.

Source: European Commission

**Table 14:**  
**Adult education: number of events and participation, calendar year 2006 and academic year 2005/06, respectively**

		Short events 1 – 4 TU <sup>1</sup>	Courses	Total	Special courses / events
Platform Educational Institutions in Austria	Events	5,991	8,146	14,137	-
	Participation	136,481	151,417	287,898	-
„bfi“ Vocational Training Institute	Events	n.a. <sup>2</sup>	17,164	17,164	107
	Participation	n.a. <sup>2</sup>	197,670	197,670	7,960
Austrian Library Association	Borrowings <sup>3</sup>	.	.	19,678,591	.
	Visitors	.	.	10,003,759	13,894
	Users <sup>4</sup>	.	.	1,125,242	n.a. <sup>2</sup>
Catholic Adult Education Institutions	Events	16,803	7,422	24,225	3,444
	Participation	414,312	144,728	559,040	257,195
Institute for Adult Education in Rural Areas	Events	11,107	5,461	16,568	394
	Participation	331,409	117,365	448,774	52,857
Federation of Austrian Educational Associations	Events	9,294	5,593	14,887	7,027
	Participation	298,374	104,211	402,585	1,236,645
Austrian National Economy Society	Events	1,038	1,678	2,716	133
	Participation	28,789	29,514	58,303	3,750
Austrian Trade Union Education Network	Events	5,078	6,821	11,899	2,352
	Participation	119,635	96,926	216,561	211,678
Association of Austrian Adult Education Centres	Events	3,647	46,481	50,128	3,503
	Participation	76,218	463,209	539,427	177,841
Institute for Economic Promotion of the Austrian Federal Economic Chamber	Events	n.a. <sup>2</sup>	n.a. <sup>2</sup>	25,239	-
	Participation	n.a. <sup>2</sup>	n.a. <sup>2</sup>	292,344	-
<b>Total<sup>5</sup></b>	Events	52,958	98,766	176,963	30,854
	Participation	1,405,218	1,305,040	3,002,602	1,947,926

1 TU = Teaching unit.

2 Not available.

3 Borrowings of books and other media.

4 Registered users.

5 Sum total without data from the Austrian Association of Libraries.

Source: Austrian Conference on Adult Education (KEBÖ)



**Table 15:**  
**Adults' participation in lifelong learning: Population of 15 years and older by participation in training and continuing education; type, purpose and hours by age and gender, 2007**

Age (years)	Total		of which in education / training (formal and/or non-formal <sup>1</sup> )			Courses attended			Average number of hours within four weeks prior to survey <sup>2</sup>		EU structural indicator "lifelong learning" <sup>3</sup>
	Thousands	Thousands	%	Total	of which predominantly job-related	of which predominantly private	Total	of which in predominantly job-related courses	Hours		
										Thousands	
<b>All</b>											
<b>All age groups</b>	<b>6,905.1</b>	<b>1,246.4</b>	<b>18.1</b>	<b>621.3</b>	<b>334.9</b>	<b>286.5</b>	<b>18.4</b>	<b>23.6</b>	<b>12.8</b>		
15 – 19	483.0	420.7	87.1	66.4	17.6	48.8	20.3	34.5	.		
20 – 29	1,036.5	334.5	32.3	123.0	71.5	51.5	22.3	29.0	23.8		
30 – 39	1,214.2	187.0	15.4	144.9	92.0	53.0	19.3	23.4	15.3		
40 – 49	1,356.9	162.7	12.0	151.9	97.6	54.3	17.1	20.4	12.0		
50 – 59	1,031.8	88.1	8.5	84.6	51.0	33.6	16.5	19.4	8.5		
60 and older	1,782.6	53.4	3.0	50.4	5.1	45.2	10.4	15.0	5.3		
25 – 64	4,560.8	589.8	12.9	467.3	282.8	184.6	17.9	22.0	12.8		
<b>Females</b>											
<b>All age groups</b>	<b>3,579.1</b>	<b>663.8</b>	<b>18.5</b>	<b>343.5</b>	<b>159.8</b>	<b>183.6</b>	<b>16.7</b>	<b>23.4</b>	<b>14.0</b>		
15 – 19	241.8	210.0	86.9	31.4	8.4	22.9	19.9	36.6	.		
25 – 29	520.1	176.9	34.0	67.4	34.6	32.8	18.9	26.0	24.7		
30 – 39	607.7	102.0	16.8	79.3	44.8	34.5	18.2	24.1	16.7		
40 – 49	671.9	92.3	13.7	86.6	48.8	37.9	16.2	20.9	13.7		
50 – 59	524.0	48.2	9.2	46.4	22.1	24.3	14.9	19.0	9.2		
60 and older	1,013.7	34.5	3.4	32.3	1.1	31.2	9.4	11.5	6.3		
25 – 64	2,289.3	322.8	14.1	260.7	134.6	126.2	16.3	21.9	14.0		
<b>Males</b>											
<b>All age groups</b>	<b>3,325.9</b>	<b>582.6</b>	<b>17.5</b>	<b>277.9</b>	<b>175.0</b>	<b>102.8</b>	<b>20.4</b>	<b>23.7</b>	<b>11.6</b>		
15 – 19	241.2	210.7	87.4	35.0	9.1	25.9	20.6	32.6	.		
20 – 29	516.4	157.7	30.5	55.6	36.9	18.7	26.4	31.8	23.0		
30 – 39	606.5	85.1	14.0	65.6	47.2	18.4	20.7	22.8	13.8		
40 – 49	685.0	70.3	10.3	65.3	48.9	16.4	18.2	19.9	10.2		
50 – 59	507.8	39.9	7.9	38.3	28.9	9.3	18.5	19.7	7.9		
60 and older	769.0	18.9	2.5	18.1	4.0	14.1	12.2	16.0	4.3		
25 – 64	2,271.5	267.0	11.8	206.6	148.2	58.4	20.0	22.1	11.6		

1 Adults' participation in training and continuing education within four weeks prior to the survey; formal education: school and higher education system (including apprenticeship); non-formal education: courses and training.

2 Refers to participants.

3 Percentage of the population aged 25 to 64 years participating in training and continuing education programmes (not including persons who interrupt attendance at school or higher education institution on account of holidays).

Source: Statistics Austria - Microcensus / Labour Force Survey

**Table 16:**  
**Labour force aged 25 to 64 years participating in continuing education by federal province and purpose of continuing education, 2007**

Participation in continuing education	Austria, total	Burgenland	Carinthia	Lower Austria	Upper Austria	Salzburg	Styria	Tyrol	Vorarlberg	Vienna
	Thousands									
<b>All</b>	3,413.4	116.9	219.3	657.1	584.6	227.8	487.0	294.4	152.4	674.1
Numbers	390.8	12.1	24.8	75.1	70.0	25.4	52.3	32.1	19.0	79.9
%	11.4%	10.4%	11.3%	11.4%	12.0%	11.1%	10.7%	10.9%	12.5%	11.8%
predominantly job-related	251.7	8.6	17.4	48.5	45.7	16.4	33.6	21.3	12.3	47.9
predominantly private	139.1	3.5	7.4	26.6	24.4	9.0	18.7	10.8	6.8	32.0
<b>Females</b>	1,538.8	52.2	98.8	296.5	259.5	105.7	215.2	133.4	66.5	311.0
Numbers	204.9	5.8	13.5	39.6	35.5	14.4	27.9	16.2	9.6	42.3
%	13.3%	11.1%	13.7%	13.4%	13.7%	13.6%	13.0%	12.2%	14.5%	13.6%
predominantly job-related	114.8	3.8	8.6	22.9	19.2	8.0	14.9	8.8	5.1	23.4
predominantly private	90.1	2.1	4.9	16.7	16.3	6.3	13.0	7.4	4.5	18.9
<b>Males</b>	1,874.6	64.6	120.4	360.6	325.0	122.1	271.8	161.0	85.9	363.1
Numbers	185.9	6.3	11.3	35.5	34.5	11.0	24.4	15.9	9.4	37.5
%	9.9%	9.8%	9.4%	9.9%	10.6%	9.0%	9.0%	9.9%	11.0%	10.3%
predominantly job-related	137.0	4.9	8.8	25.6	26.5	8.4	18.8	12.5	7.1	24.5
predominantly private	49.0	1.5	2.5	10.0	8.0	2.7	5.6	3.4	2.3	13.1

Source: Statistics Austria - Microcensus / Labour Force Survey