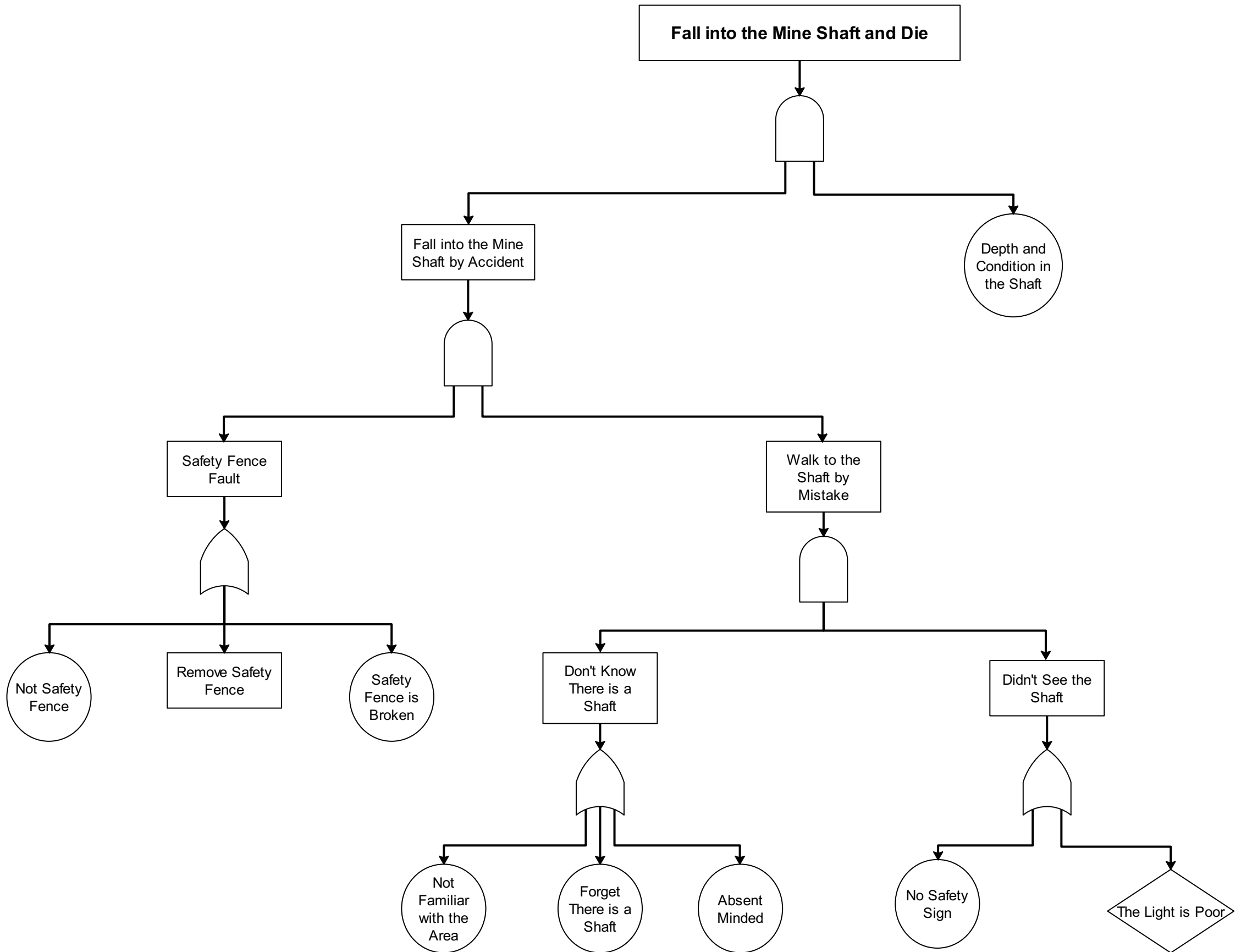


Mine Shaft Fault Tree



Fault tree analysis (FTA) is a top-down, deductive failure analysis in which a system's undesirable state is examined by combining a succession of lower-level occurrences using Boolean logic. This analysis method is mostly used in safety engineering and reliability engineering to quantify (or obtain a sense for) occurrence rates of a safety accident or a specific system level (functional) failure, as well as to discover the best ways to reduce risk.

Drawing an **fault tree diagram** requires special symbols and professional knowledge. Well, starting from a suitable template with **EdrawMax** will make things much easier. This page provides a simple and style **mine shaft fault tree** template, available in vector format. Simply download and use it to represent your own fault tree diagrams.