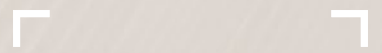


Interior 2.3 Essential

Range of Decors | Release February 2024



For you to create



Fundermax



Contents

Sustainability and the Environment	4
Interior 2.3 Essential Collection	6
Trends	8
Individual Print	16
Surfaces	20
Decors	26
Products	42
Overview of formats	46
Fundermax Services	48
Pro Collections	50

Fundermax products (cover)

0938 NI Greige Cottage Oak
 2289 NI Tortora
 0833 FH Rezzato
 0912 NI Sand Lakeside Larch
 0742 TE Pebble Grey
 3393 GA Batist
 3413 GA Romazzino
 M003 Aluminium Stainless Steel Nuance
 M001 Natural Aluminium
 3395 FH Matera
 0834 FH Paros
 0599 FH Orca

Fundermax

No matter whether it's furniture, facades, or interior design: where ideas and materials meet, you'll find Fundermax. As a global market leader in the field of compact panels and a manufacturer of high-quality wood-based materials and laminates, the company is proud to look back on a history spanning 130 years. The continued success is based on the highest quality, innovative and varied design, and sustainable production. Made in Austria—with great love for wood as a natural material, creations, and imagination.

- modern production facilities in Austria and Norway
- around 1,500 employees
- annual sales of €500 million
- part of Constantia Industries AG
- The Austrian Excellence Award (2018)

Sustainability and the Environment

Offering high-quality wood based compact, and HPL panels with various decors, Fundermax positions itself at the very heart of the architecture of a building. We design and manufacture a broad spectrum of products made from natural materials that are easy to work with, in order to provide architects, designers, facade designers, interior designers, and industrial companies with solutions that stand the test of time.

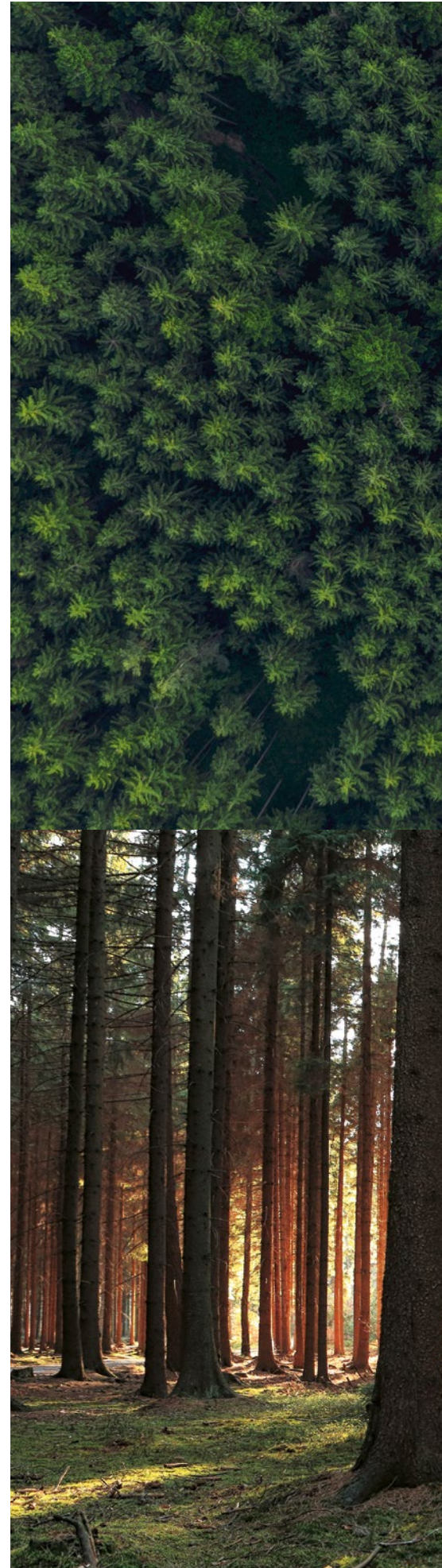
Fundermax has been processing natural materials with precision and love for 130 years. Today, we are manufacturers of high-quality timber composite materials and a global leader in compact laminates for both internal and external applications. Fundermax stands for nothing less than top quality and excellent design.

This and much more is what makes Fundermax a sustainable company, always looking to the future.

Find out more in our Sustainability Brochure via this QR code.

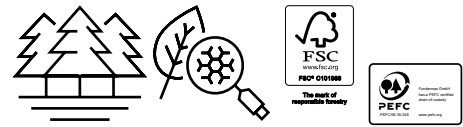


Sustainability Brochure





100% wood and paper



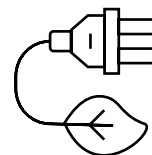
comes from sustainable and certified forestry management.

10,000 t CO₂



saved every year

100% green electricity



generated during production.

On request, you can order our products also FSC® or PEFC certified.

Interior 2.3 Essential

The Collection

Fundermax Interior is synonymous with product quality, sustainability, innovation, and design freedom.

An expert team consisting of designers, product managers, and external consulting agencies took the lead in creating the collection. An international team of sales colleagues (DACH, IT, FR) from the trade, industry, and architecture sectors contributed aspects, requirements, and ideas right from the start in the Design Committee.

The Essential Collection focuses on maximum decor selection and efficiency.

Fundermax Individual Print offers maximum design freedom. Create your own design with Fundermax Individual Print or make accents through design milling directly on the material surface without any further treatment.

With the Interior 2.3 | Essential Collection, Fundermax opens up a world of design possibilities for you.

For you to create.

Note: Color deviations from the original samples are due to printing technology.





Trends

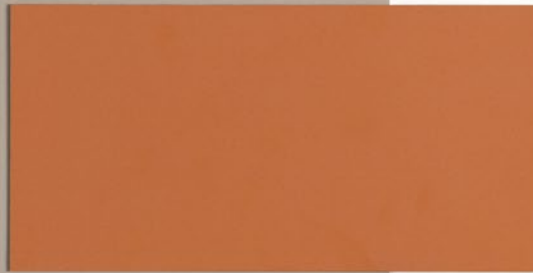
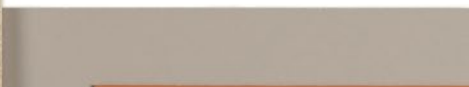
Discover the diversity of our collection.

Experience fascinating surfaces, trendy color palettes, and decors that are on-trend. We have drawn inspiration from nature, art, fashion, and culture to create a variety of moods in our mood boards. From minimalist to extravagant, you can play with textures, patterns, and different styles.



Sophisticated & Powerful

A play of warm rust tones and cool marble. The pear tree creates a bridge between the past and the present.



Fundermax products

0834 SG Paros

2206 AP Fango

0871 FH Dark Saffron

0944 SG Royal Flamingo Pear

**Mindful & Minimalistic**

This look has been inspired by cultures from around the world. Essential elements include black accents and matte surfaces. It's a contrasting blend of tradition and modernity.

Fundermax products
0080 AP Black
3393 GA Batist
0845 NI Vanilla Jazz Oak

**Expressive & Self-Confident**

The use of gray tones and dark oak gives this look its timeless charm.

Fundermax products

0585 RM Castello

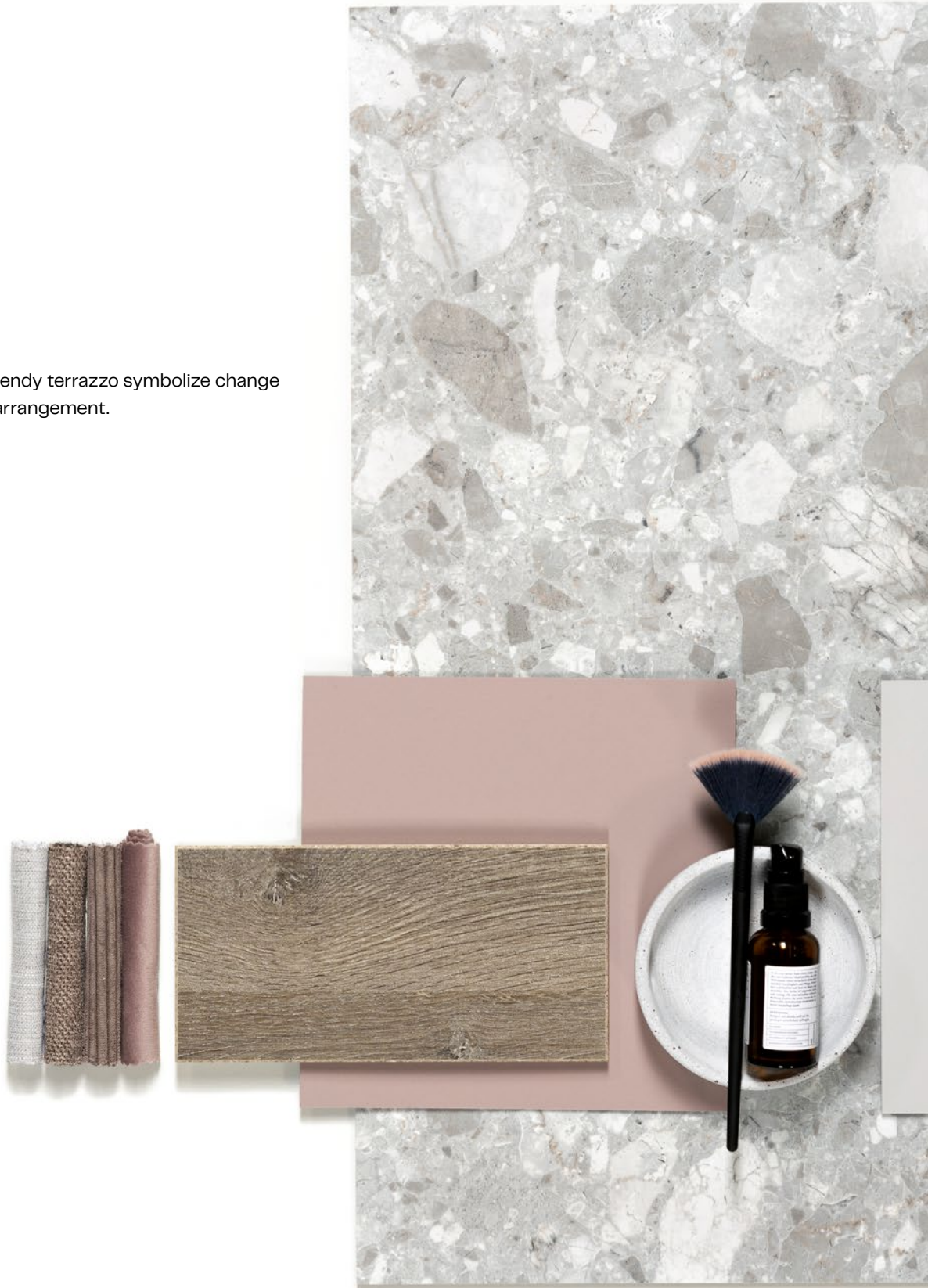
0070 AP Carbon Grey

1203 AP Grey

0821 IM Chocolate Heritage Oak

Harmonious & Light

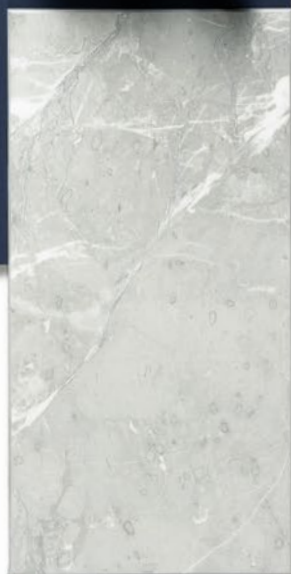
Subtle rose tones and trendy terrazzo symbolize change and set the tone in this arrangement.

**Fundermax products**

0833 RM Rezzato
0940 NI Truffle Cottage Oak
0746 AP Hygienic Grey
0018 AP Divaro

**Elegant & Timeless**

Dark blue tones represent comfort and durability. The combination with marble and walnut enhances its timeless aesthetic.

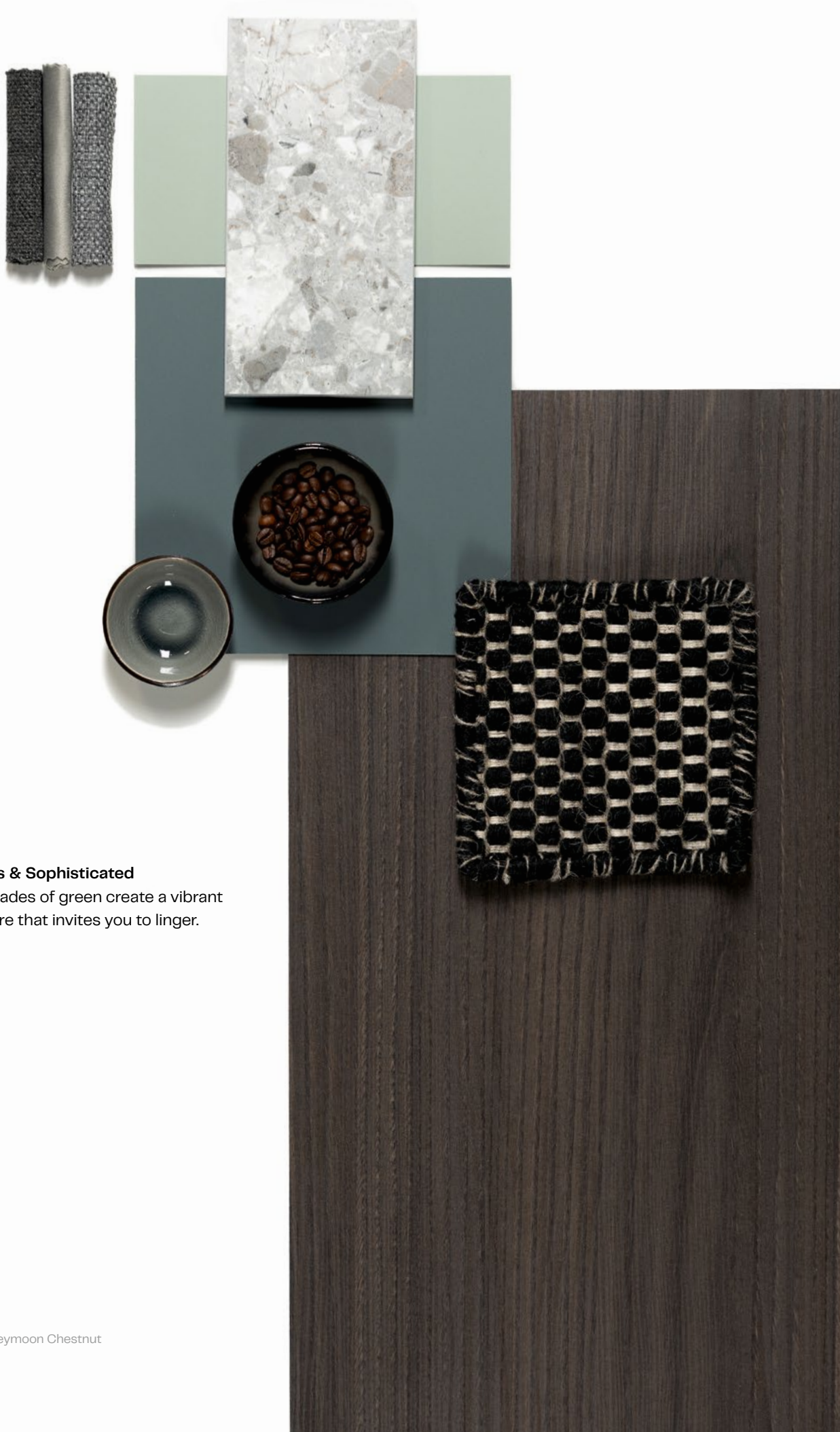
**Fundermax products**

0955 PM Dark Panorama Walnut

2379 FH Pepper

0581 FH Lentos

0702 AP Night Blue

**Conscious & Sophisticated**

Various shades of green create a vibrant atmosphere that invites you to linger.

Fundermax products

0833 RM Rezzato

0958 NI Chocolate Honeymoon Chestnut

0662 AP Jade Green

2370 AP Slate Green

**Intense & Dynamic**

This unconventional mix draws attention – larch wood, classic marble, and a vibrant mustard tone create a modern and youthful ambiance.

Fundermax products

0599 SG Orca

0864 AP Mustard

0071 AP Fresco

0914 NI Brown Lakeside Larch



Fundermax products
0836 RM Lagos
5032 AP Cinnamon
2289 AP Tortora
0912 NI Sand Lakeside Larch

Versatile & Striking

A cinnamon hue connects this decor palette in an exciting way. It can be found in the golden quartz inclusions of the sandy-colored marble as well as in the light larch wood.

Individual Print

Your Design. Your Space. Your Look.

Create exclusive high-pressure laminates according to your own ideas for a wide range of applications, from the workout zone to the kids club.

Individual Print gives you the opportunity to bring your look to any room.

Information on formats and services can be found on page 46.









Surfaces

Unique surfaces combined with diverse decors – tailor-made for your special project!

From trusted classics like FH Fine Hammered Finish to expressive wood textures, and even AP Aptico with an anti-fingerprint effect, Fundermax offers a diverse selection of high-quality surfaces.

Let us inspire you and find the perfect combination of surface and decor to give your project that extra something.

Surface matrix

Surface	Star Favorit	Max HPL	Compact Interior
AP = Aptico		■	■
FH = Fine Hammer Embossed	■	■	■
GA = Grafica	■	■	
IM = Immago	■	■	
Individual Print		■	■
LI = Lignum	■	■	
MI = Mito	■	■	
MT = Matt	■	■	■
NA = Natura	■	■	
NI = Nice	■	■	
PM = Pore Matt	■	■	
RM = Real Matt	■	■	
SF = Soft Finish	■		
SG = Supergloss	■	■	■
SU = Structura	■	■	
TE = Texta	■	■	

GA Grafica

GA Grafica is versatile and can be used in various applications. Characteristic of this surface is the rough, mineral texture combined with a matte, organic look reminiscent of spatula technique.

IM Immago

At IM Immago, it's all about exceptional craftsmanship. This surface transfers the visual and tactile characteristics of concrete formwork boards to various room applications.

TE Texta

TE Texta brings style to any interior. The design is based on shantung silk and impresses not only in wardrobes. Subtle light reflections add glamour to any space.

The direction of the surface texture of TE Texta is transverse.

W
A
T
T
E
B
T
A

NI Nice

The characteristic depth effect of NI Nice is achieved through the smart mix of glossy and matte areas. NI Nice takes decor to a whole new level – more realistic than ever before with the appearance and texture of a veneer.

PM Pore Matt

This surface is universally applicable to wood decors. PM Pore Matt harmonizes with rustic as well as elegant woods. A soft and natural texture distinguishes this surface.

NA Natura

NA Natura is a delicate wood surface with a velvety texture. The wood pores are irregularly and unevenly arranged, creating a timeless appearance.

MI Mito

The distinctive and deep grooves of MI Mito are inspired by carved wood. As a representative of this artistry, the surface is perfect for creating a warm and natural atmosphere.

SU Structura

A classic with an almost linear striped pattern and a distinctive appearance. SU Structura achieves its special depth effect through the interplay of matte and glossy finishes.

LI Lignum

Characteristic of the LI Lignum surface is the very elegant and natural wood grain combined with a raised, inverse pore structure.

FH Feinhammerschlag (Fine Hammered)

FH Feinhammerschlag is versatile and therefore one of the most popular surfaces. It visually blends subtly into its surroundings, is resistant, and easy to clean.

SF Soft Finish

A classic that features a fine pearl structure. The slight graininess makes the surface robust and resistant.

SOFT FINISH CLASSIC

F
A
M
T
A
M**AP Aptico**

This matte surface stands out for its high quality due to the anti-fingerprint effect. The technology has been patented. AP Aptico is easy to maintain and process.

RM Real Matt

RM Real Matt is highly resistant and embodies the matte trend in a youthful and smart way. Real Matte is in vogue – the texture is crucial and adds character.

MT Matte

This matte surface captures the spirit of the times. MT Matte impresses with its velvety and uniform texture.

SG Spiegelglanz (Mirror Gloss)

SG Spiegelglanz impresses with its elegant and noble appearance. The gloss enhances the color effect of the decors significantly.

SG
SG
GL
GL

Decors

Colour

The new Colour collection impresses with its harmonious color selection and consistent color ranges from light to dark.

Black and white appear in various shades, ranging from cool to warm tones. The popular greige spectrum leaves nothing to be desired in its versatility.

The vibrant colors of the color wheel, such as red, yellow, green, and blue, have been implemented in fresh and contemporary shades.

In addition, new intense solid colors complete the palette.

★ = new decor

Note: Color deviations from the original samples are due to printing technology.

					
0080 Black	0761 Neutral Grey Dark	0762 Neutral Grey Medium	0074 Pastel Grey	0075 Dark Grey	0759 Graphite Black
					
0077 Charcoal	0746 Hygienic Grey	1203 Grey	0730 Ashgrey	0753 Cool Grey Medium	0070 ★ Carbon Grey
					
0900 ★ Dark Cyber Grey	0747 Medium Grey	0741 Birch Grey	0756 Warm Grey Medium	0755 Warm Grey Dark	0889 ★ Everglades

★ = new decor

					
0768 ★ Sparrow	2289 Tortora	0743 Light Stone Grey	0742 Pebble Grey	0071 Fresco	2379 ★ Pepper
					
2206 Fango	0144 Costa	0066 Sand	0624 Light Beige	0081 Alpaca	0098 Mandola
					
2194 ★ Pastel White	0085 White	1630 Expo-Star	2286 White Syringa	0733 Hygienic White	0851 Winter White
					
0112 Top White	2296 ★ Snow White	2306 Glacier White	0606 Arctic White	2313 Ceramic White	M082 Magnetic White
					
0854 ★ Chocolate Mauve	0018 Divaro	0693 Orchid	0627 ★ Hygienic Beige	0319 Cappuccino	0153 Burano
					
0875 ★ Chocolate Brownie	0863 ★ Dark Siena	0862 ★ Light Siena	0645 ★ Tobacco	0174 Terrana	0648 Dark Brown
					
0873 ★ Red Pepper	0871 ★ Dark Saffron	5032 ★ Cinnamon	0013 Minola	0661 ★ Terracotta	0874 ★ Maroon

★ = new decor

					
2215 ★ Orange Red	0682 ★ Orange	0011 Mandarin	0210 Intensive Red	0067 Red	0318 Ruby Red
					
0010 Mango	0865 ★ Lemon	0635 ★ Naples Yellow	2124 Camomile	0667 Passion	0864 ★ Mustard
					
2182 Verduro	0024 Vivo	0725 Yellowish Green	0850 ★ Green Valley	0893 ★ Emerald Green	0591 ★ Fir Green
					
0059 ★ Dark Green	0662 ★ Jade Green	0663 ★ Reseda Green	0592 ★ Kiwi Green	0849 ★ Frosted Green	0623 ★ Green
					
2370 ★ Slate Green	0042 Marino	0630 Sea Green	2126 ★ Aqua	0876 ★ Frosted Teal	0617 ★ Petrol Green
					
0237 Gentian Blue	0717 Atlantic	0848 ★ Blue Jelly	0706 ★ Glacier Blue	0712 ★ Steel Blue	0023 Lamar
					
2369 ★ Black Blue	0702 ★ Night Blue	0718 Arctic	0021 Mona Lisa	0842 ★ Blackberry Cupcake	0843 ★ Midnight Plum

Nature

In the development of the decors, not only the current trends but also the combinability of the decors with each other and their durability were taken into account.

In addition to classic woods like oak, walnut, ash, and chestnut, the collection also includes lesser-known woods that have been somewhat forgotten, such as cherry, pear, birch, and even eucalyptus.

With this diverse selection, the collection makes a clear statement in the market and provides you with a versatile range of options.

★ = new decor



0814
Canto Elm



4060
Quebec Elm



0911 ★
Creme Lakeside Larch



0186
Margo Birch



0179
Lunara Maple



0912 ★
Sand Lakeside Larch



0102
Plain Maple



0171
Tundra Birch



0412
Danube Maple

♻️ = new decor



0943 ♻️
Peachy Flamingo Pear



0047
Wild Beech



0125
Natural Oak



4037
Maryland Oak



0839 ♻️
Cognac Aurora Oak



0175
Knot Fir



0914 ♻️
Brown Lakeside Larch



4073
Newport Oak



0948 ♻️
Honey Amadeo Oak



0877
Light Sawcut Oak



4044
Dakar Cherry

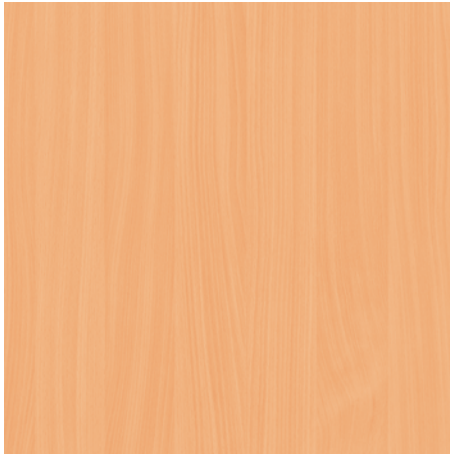


0947 ♻️
Sand Amadeo Oak

🌿 = new decor



0157
Obir Beech



0291
Corpus Beech



0048
Cognac Oak



0913 🌿
Natural Lakeside Larch



0921
Brown Silver Fir



0920
Natural Silver Fir



0290
Akari Oak



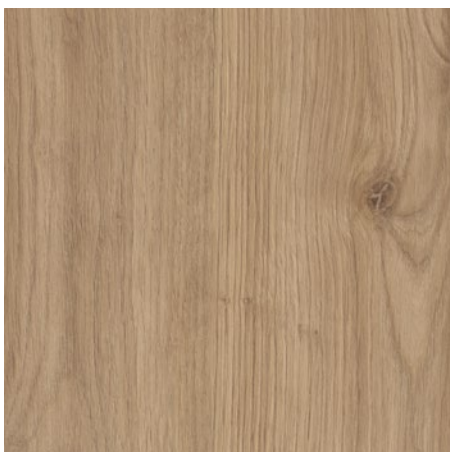
0600
Columbus Ash



4057
Canadian Oak



0813
Rocco Beech



0638
Ramos Oak



0665
Atram Oak

♻️ = new decor



0954 ♻️
Light Panorama Walnut



0960 ♻️
Caramel Libretto Ash



4047
Virginia Oak



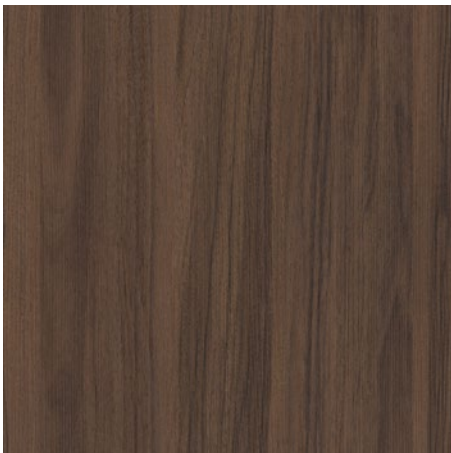
0944 ♻️
Royal Flamingo Pear



0331
Fortuna Oak



0961 ♻️
Brown Libretto Ash



4035
Pavia Walnut



0955 ♻️
Dark Panorama Walnut



4024
Eucalyptus



0909 ♻️
Brown Flagship Oak



4038
Jazz Oak



0917 ♻️
Nougat Artis Chestnut

♻️ = new decor



0637
Cavalli Chestnut



0320
Sereno Oak



0939 ♻️
Honey Cottage Oak



4048
Atlanta Walnut



0260
Arezzo Walnut



0837
Aria Oak



0811
Cello Walnut



0265
Delano Walnut



0269
Tosca Walnut



4064
Portland Oak



4052
Maine Oak



0817
Brixen Oak

♻️ = new decor



0816
Bozen Oak



0957 ♻️
Greige Honeymoon Chestnut



0938 ♻️
Greige Cottage Oak



0940 ♻️
Truffle Cottage Oak



4061
Nevara Elm



0361
Serenissima Ash



0376
Finca Oak



0551
Whitney Chestnut



4059
Lionga Elm



4029
Dark Eucalyptus



0907 ♻️
Graphite Flagship Oak



0419
Pinero Pine

★ = new decor



0229
Silvretta Elm



0831
Symphony Oak



0845 ★
Vanilla Jazz Oak



0832
Harmony Oak



0815
Brescia Oak



0607
Loen Ash



0820 ★
Hazel Heritage Oak



0821 ★
Chocolate Heritage Oak



4051
Alba Oak



0958 ★
Chocolate Honeymoon Chestnut



4077
Augusta Oak



0901 ★
Dark Rainbow Rosewood



Decors

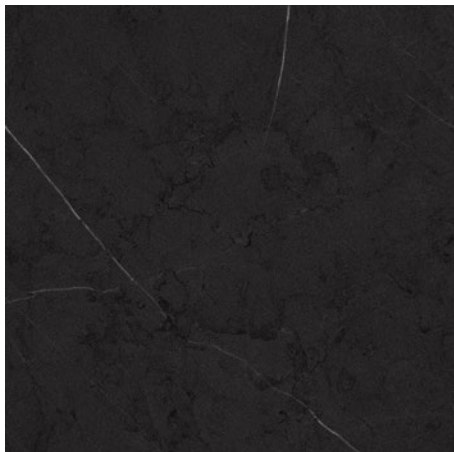


Fundermax



Material

The new collection includes essential stones such as marble and slate. You will also find modern terrazzo, concrete, weathered and processed metals - real metals that add attractive accents. Subtle textiles complete the range.

0599
Orca0834
Paros0835
Thasos



0581
Lentos

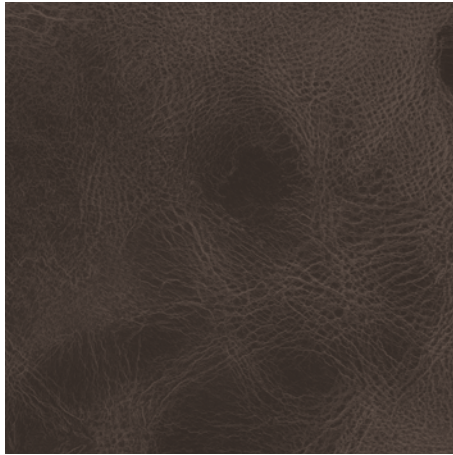


0833
Rezzato



0585
Castello

★ = new decor



0528
Saloon



0794
Patina Bronze



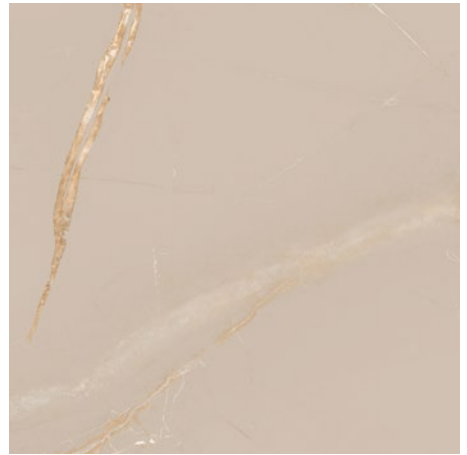
0793 ★
Patina Tin



0540
Aristo



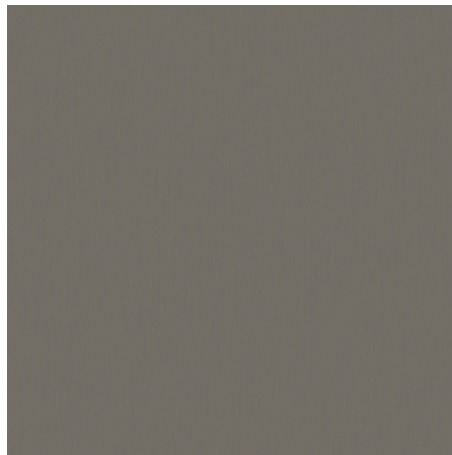
0670
Olivine



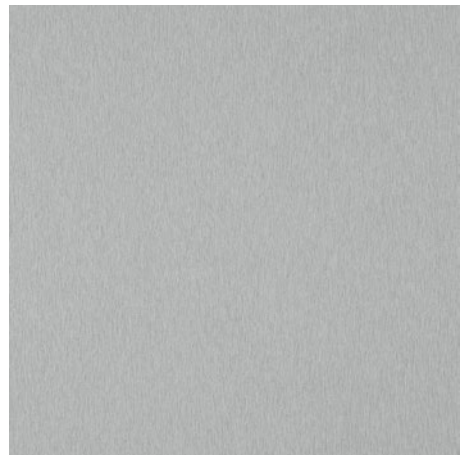
0836
Lagos



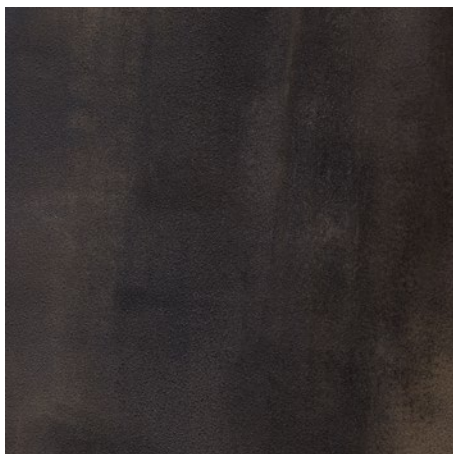
3427 ★
Titanio



3426 ★
Scandio



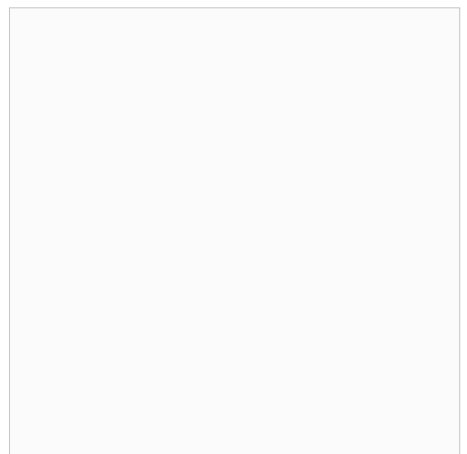
0328
Brushed Aluminium



3395
Matera



1300
Aluminium



M082
Magnetic White

★ = new decor



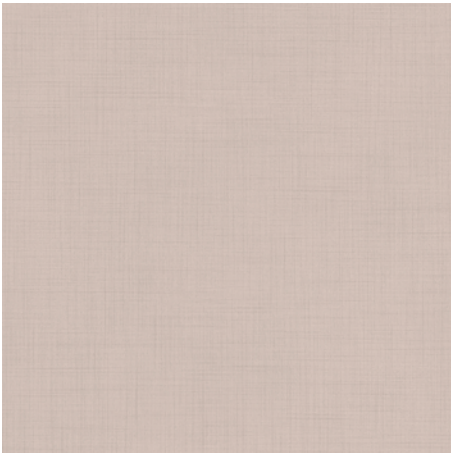
0897 ★
Grey Cliffhanger Slate



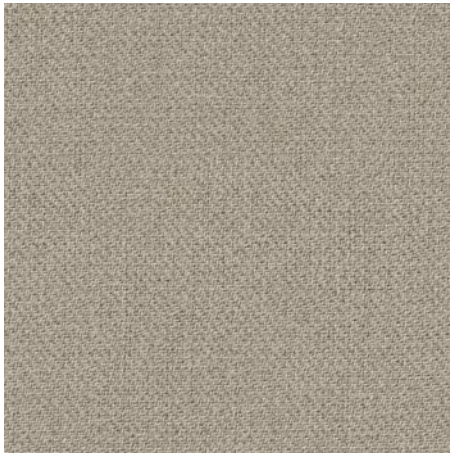
0898 ★
Porto Nero Slate



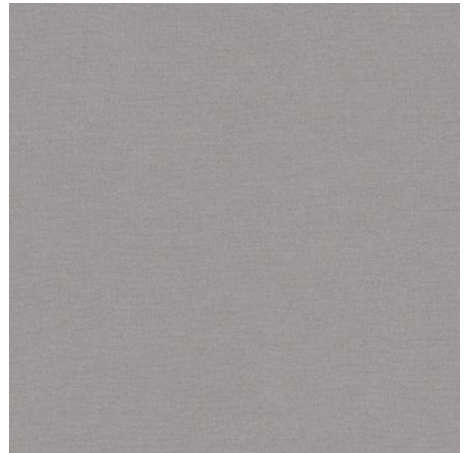
0566
Kara



3413
Romazzino



3393
Batist



3405
Oxford



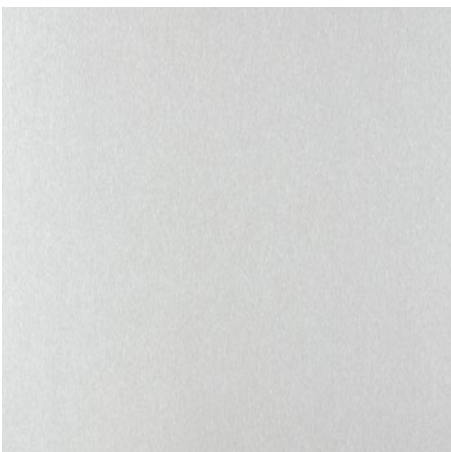
0565
Polaris



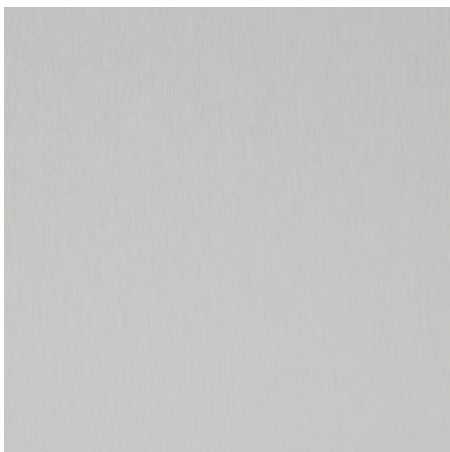
0026
Prado Alu Grey



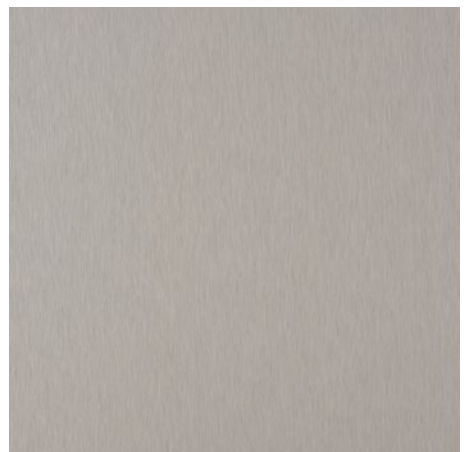
0027
Prado Agate Grey



M002
Topmatt Aluminium



M001
Natural Aluminium



M003
Aluminium Stainless Steel Nuance





The Essential Products



Star Favorit

Star Favorit is a direct melamine-coated board consisting of a core (particleboard or MDF) covered on both sides with decorative paper.

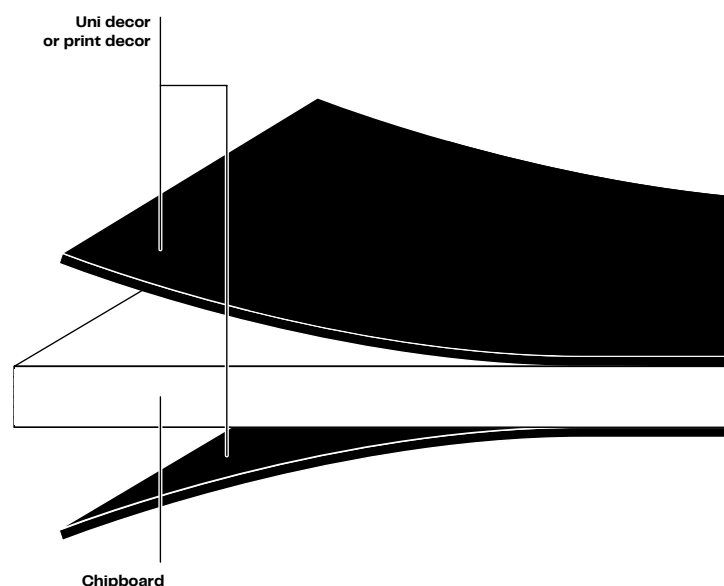
The classic Star Favorit is our P2 quality. For special requirements, it is also available in P2B (fire-resistant) and P3/P5 (suitable for wet areas) versions.

Application

In furniture and interior design, such as carcasses and fronts, partition walls, wall cladding, and more.

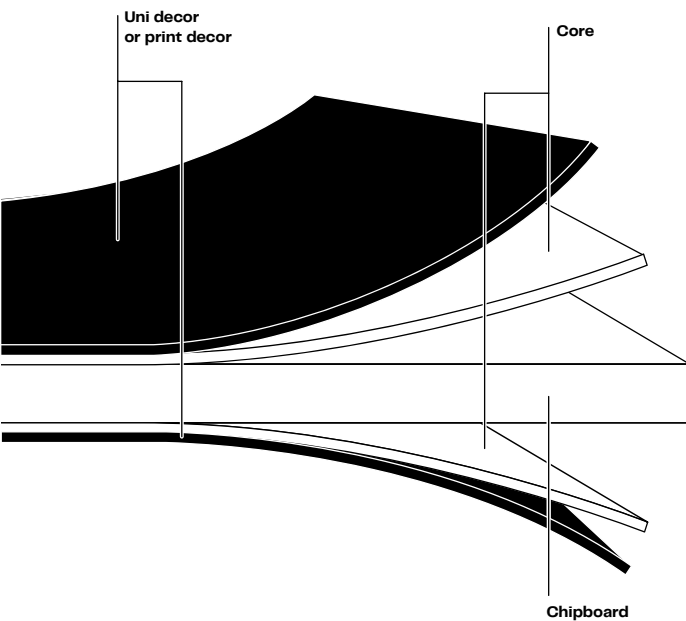
Advantages

- Antibacterial
- Easy to clean
- Solvent-resistant
- Properties according to EN 14323
- Suitable for wet areas (P3/P5 quality)
- Fire-resistant (P2 B quality)
- Decorative combination with other Fundermax products (e.g., Max HPL, Max Compact Interior)
- Surface combination with Max HPL
- Matching edges available from our partners REHAU and Hranipex





Interior Technique brochure



Advantages

Same properties as Star Favorit, with the additional benefits of:

- Increased impact and scratch resistance
- Improved surface stability
- Available in Superfront 0.5 and Superfront 1.0 versions (multi-layer construction of approximately 0.5mm vs. 0.8mm)
- Also available with a white core layer

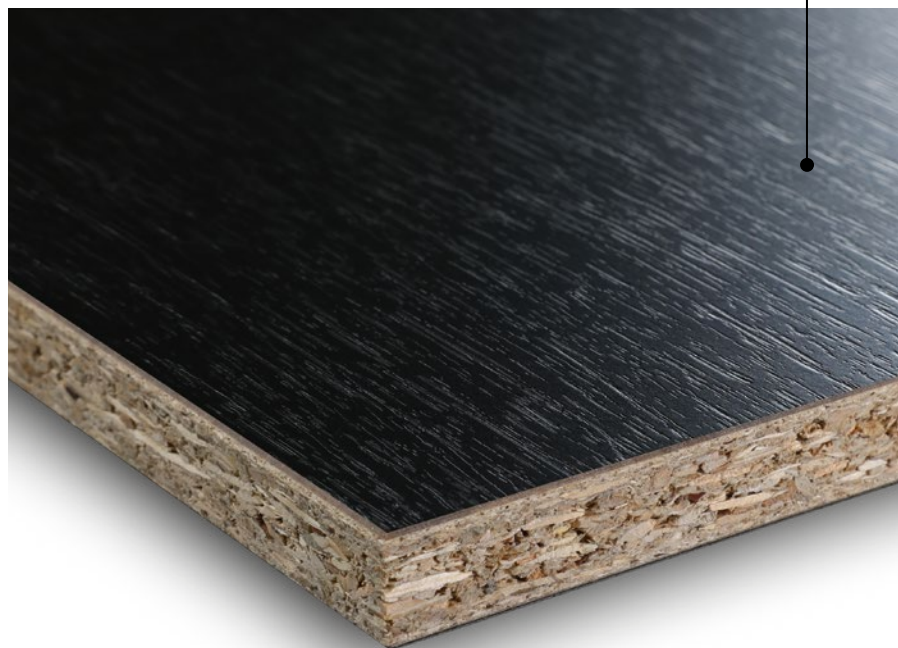
Star Favorit Superfront

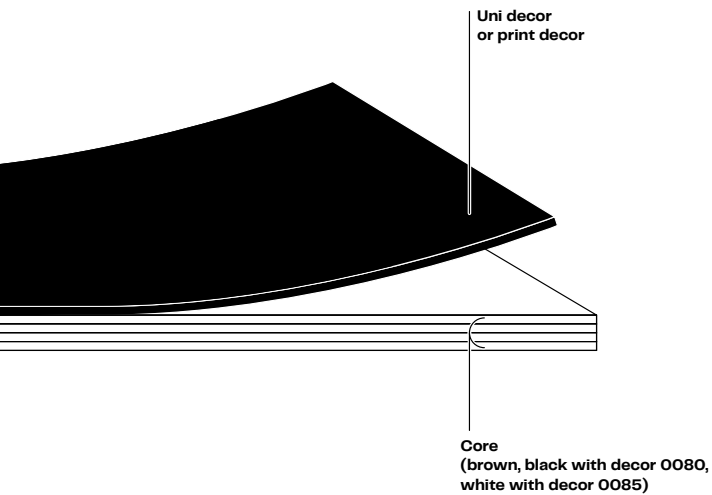
Star Favorit Superfront is a direct melamine-coated chipboard with a multi-layer construction of approximately 0.5mm (Superfront „S0.5“) or approximately 0.8mm (Superfront „S1.0“).

The larger layer construction provides better surface stability and higher impact resistance, making it ideal for highly demanding interior applications.

Application

In furniture and interior design, as well as high-demand applications (e.g., commercial areas, shopfitting, schools, hospitals, hotels, office furniture, and more).





Max HPL

Max HPL is high-pressure laminate according to EN 438-3, Type HGS, with a standard thickness of 1mm.

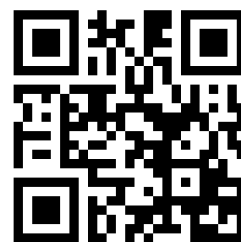
Max HPL can be laminated onto various substrates such as wood-based panels and other carrier materials.

Application

In furniture and interior design with higher demands.

Advantages

- Antibacterial
- High resistance to abrasion, impact, scratches, and extreme temperature fluctuations
- Easy to clean and resistant to common household chemicals
- Decorative combination with other Fundermax products (e.g., Star Favorit, Max Compact Interior)
- Surface combination with Star Favorit
- Properties according to EN 438-3
- Anti-fingerprint effect with AP Aptico surface
- Available with a white core (with Decor 0085)
- Available with your individual design (Fundermax Individual Print)
- Matching edges available from our partners REHAU and Hranipex



Interior Technique brochure



Max Compact Interior

Compact panels are highly durable high-pressure laminates with decorative surfaces on both sides according to EN 438-4, Type CGS, produced under high temperature and pressure in high-pressure presses.

Max Compact Interior is standardly made with a black core (D-s2, d0). For a particularly homogeneous appearance, Compact is also available in three other core colors (white, pastel gray, dark gray). For special requirements, there is also a version with a black core, F-quality (Type CGF / B-s2, d0 / B-s1, d0).

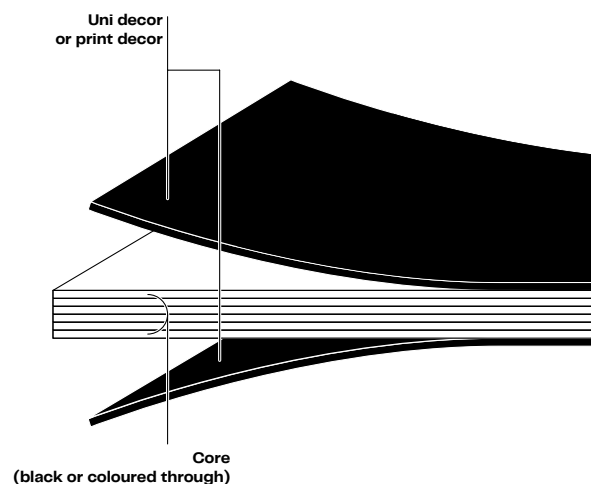
Application

Suitable for heavily used furniture and interior design (e.g., in sanitary and wet areas, wall protection, cabins and lockers, tabletops and desks, railing fillings, and more).

Advantages

- Antibacterial
- High resistance to abrasion, impacts, scratches, and extreme temperature variations
- Cold and heat shock resistant
- Reversible, can be used on both sides
- Easy to maintain and resistant to solvents
- Durable and highly load-bearing
- Properties according to EN 438-4
- Available in three additional core colors (FH surface)
- Available with black core F-quality (B-s2, d0 / B-s1, d0)
- Available with your custom design (Fundermax Individual)

If you prefer to use non-combustible building materials (A2 - s1, d0) for your project, your Fundermax contact person will be happy to assist you with advice on our A2 product **m.look Interior**.



Discover more products and surfaces outside the Essential Collection on our website www.fundermax.com.

- Max Compact Interior Plus - The surface with the plus!
- Max Compact Resistance² - Highest quality for absolute resistance.
- Premium Star - The star among surfaces for an exclusive ambiance.
- Compact Worktops & Alucompact - Perfect for use in kitchens and other demanding environments.

Overview of formats

Star Favorit (E05)

Format	Thicknesses	Tolerances (EN 14322)	Carrier
2800 x 2070 mm = 5.80 m ² *SG deviating, see Delivery program	8.0 mm 10.0 mm 12.0 mm 16.0 mm 18.0 mm 19.0 mm 22.0 mm 25.0 mm 28.0 mm 30.0 mm 38.0 mm	8-20mm ± 0.3 mm >20mm ± 0.5 mm	P2 (standard) P2 B (flame retardant) P3 (moisture-resistant, non-bearing) MDF

Star Favorit Superfront (E05)


Format	Thicknesses	Tolerances (EN 14322)	Carrier
2800x2070mm = 5.80m ² *SG deviating, see Delivery program	P2 S0.5: 12.7 mm 16.7 mm 19.7 mm 25.7 mm P2 S1.0: 19.3 mm 20.3 mm 29.3 mm 31.3 mm 39.3 mm	8-20mm ± 0.5 mm >20mm + 0.5 / - 1.0 mm	P2 (standard)

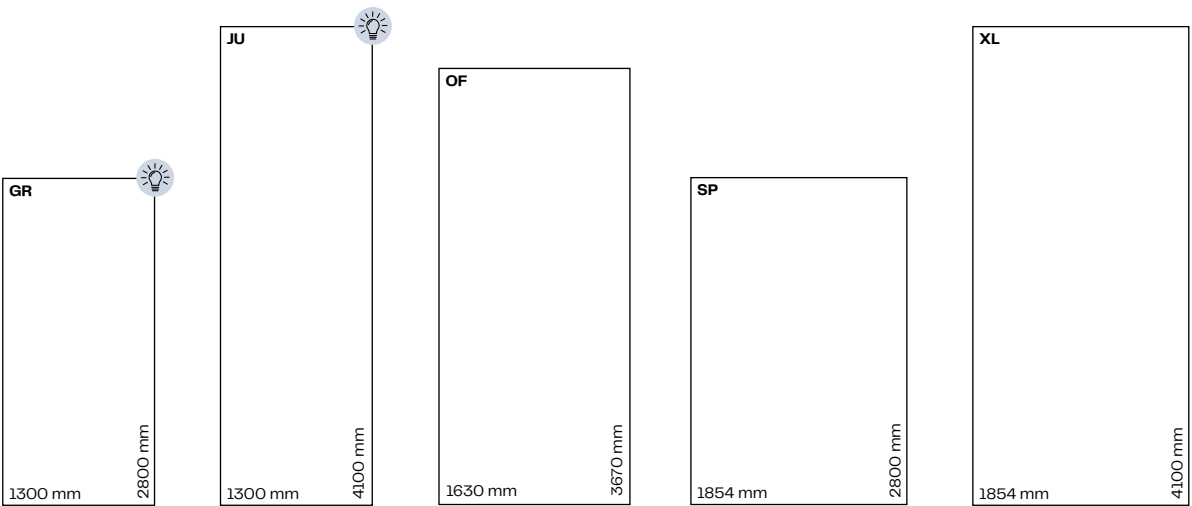
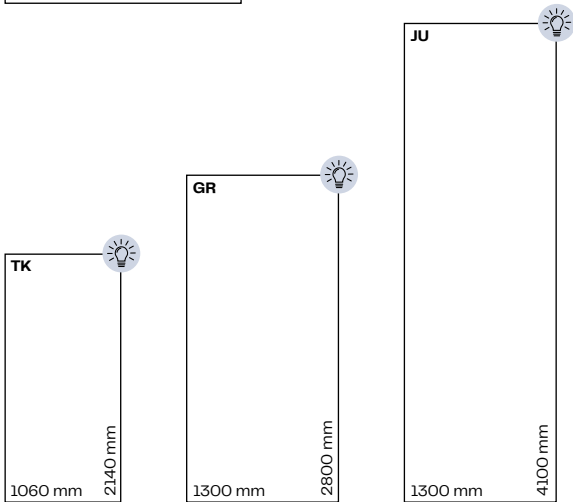
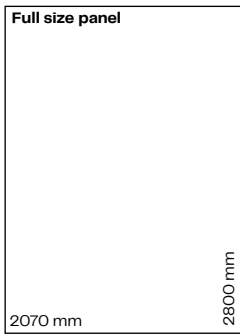
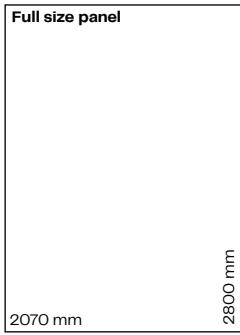
Max HPL

Format	Thicknesses	Tolerances (EN 438-3)	Core
TK: 2140 x 1060 mm = 2.27 m ² GR: 2800 x 1300 mm = 3.64 m ² JU: 4100 x 1300 mm = 5.33 m ²	1.0 mm	1.0 mm ± 0.10 mm	Brown (decor 0080 = black core) White (decor 0085)

Max Compact Interior

Format	Thicknesses	Tolerances (EN 438-4)	Core
GR: 2800 x 1300 mm = 3.64 m ² JU: 4100 x 1300 mm = 5.33 m ² OF: 3670 x 1630 mm = 5.98 m ² SP: 2800 x 1854 mm = 5.19 m ² XL: 4100 x 1854 mm = 7.60 m ²	2.0 mm 3.0 mm 4.0 mm 6.0 mm 8.0 mm 10.0 mm 12.0 mm 13.0 mm 16.0 mm 18.0 mm 20.0 mm (SP only until 13.0 mm)	2.0 mm ± 0.20 mm 3.0 mm ± 0.30 mm 4.0 mm ± 0.30 mm 6.0 mm ± 0.40 mm 8.0 mm ± 0.50 mm 10.0 mm ± 0.50 mm 12.0 mm ± 0.60 mm 13.0 mm ± 0.60 mm 16.0 mm ± 0.70 mm 18.0 mm ± 0.70 mm 20.0 mm ± 0.80 mm	Black (standard) Deep Black Core (JU only) Black F-Quality White Pastel Grey Charcoal Grey

 = Individual Print available



Additional information in the Interior Delivery program

Fundermax Services

Consulting

Benefit from our architecture and project consulting services, as well as the extensive experience of our application engineers. Certificates, approvals, BIM objects, and technical information can be found in the download section of our website. You can order material and decor samples online 24/7.

Application Engineering

For over 50 years, Fundermax has been producing compact panels in Austria. During this time, we have collaborated and worked with our business partners on numerous projects.

We cooperate with all renowned system partners in the furniture, interior design, and wall protection sectors, continuously expanding our knowledge, which we are pleased to provide for the planning and implementation of your project.

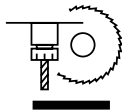
Our experts in building approvals and certification ensure the timeliness and expansion of all relevant certificates in the exterior and interior domains.

Furthermore, through our in-house service offering in the field of cutting and CNC machining, we are connected with all well-known tool suppliers, enabling us to provide excellent advice on processing-related inquiries.

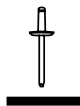
Application Engineering Consulting Services



Handling of panels



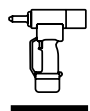
Processing of panels



Mounting options for compact panels



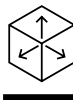
Specification text templates



Assembly options



Certificates and approvals



BIM objects and CAD details



Support and email contact

Fundermax Support-Team
 T: +43 (0) 5 9494 - 4646
 support@fundermax.biz
 Mon - Thu: 08:00 am to 4:30 pm
 Fri: 08:00 am to 1:00 pm

Individual Print

With Individual Print, you have all the freedom to design your project creatively and uniquely. Your design can be printed on individual panels or across multiple panels. Ideal for large-scale motifs and special visual effects.

Available as Max HPL and Max Compact Interior.
Information on available formats can be found on page 46.



Contact:
individual.druck@fundermax.biz

Compact Elements – Processing Service

Fundermax offers panel cutting and CNC-controlled machining.

With state-of-the-art equipment, nearly all requests can be fulfilled, from simple hole drilling for fastening to elaborate milling.

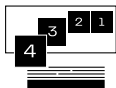
Services provided by Compact Elements by Fundermax



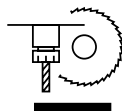
Pre-sorted and labeled
according to construction phases



Design with
CNC machinery



Pre-sorted, labeled, and
palletized for easy installation



Processing of
Compact panels

Pro Collections



Interior Pro 2.2 Premium Bundle

The right choice for quality, variety, and aesthetics: the trend surfaces AP Aptico or SG Supergloss in 12 decors. All panels included in the bundle can be provided with the preferred surface-decor combination, making them suitable for a wide range of interior applications with a consistent look.

Interior Pro 2.2 Alto Matt

MMC stands for «matt micro coated boards» and encompasses an innovative manufacturing process where anti-fingerprint surfaces are created using micro-coated papers. This technology achieves an unprecedented deep matte appearance and unique texture. Due to the use of high-tech papers, MMC boards are also at the forefront of sustainability. The AM Alto Matt surface offers an extremely matte and soft finish and is available in 5 selected colors for vertical interior applications.





Interior Pro 2.2 Alucompact

The combination of Max Compact Interior and high-quality aluminium unquestionably maintains its title as the material of the future. Powerful aluminium is visibly present along the edges, giving spaces a timeless premium atmosphere. Alucompact is available in the AP Aptico surface with anti-fingerprint effect and FH Fine Hammered finish in the Arrigo and Aura designs in 13 colors.

Worktops

As a central element of every kitchen, the worktop shapes the character of the entire space and must do more than just impress visually. Fundermax worktops are characterized by high load capacity, easy cleaning, and durability. Thanks to their surface quality, they inhibit the proliferation of bacteria. The high-pressure laminates (HPL) can be precisely processed, allowing for uncompromising kitchen planning. The worktops are supplied in the format of 4100 x 1300 mm and a thickness of 12 mm.



Fundermax Deutschland GmbH

Mundenheimer Weg 2
D-67117 Limburgerhof
infoGermany@fundermax.biz
www.fundermax.com

Fundermax France S.a.r.l.

3 Cours Albert Thomas
F-69003 Lyon
T +33 (0)4 78 68 28 31
infoFrance@fundermax.biz
www.fundermax.com

Fundermax India Pvt. Ltd.

Sy. No. 7, Honnenahalli, Doddballapur Road,
IND-Yelahanka Hobli, Bangalore - 560064
T +96113 99211
officeIndia@fundermax.biz
www.fundermax.in

Fundermax Italia s.r.l.

Viale Venezia 22
I-33052 Cervignano del Friuli
infoItaly@fundermax.biz
www.fundermax.com

Fundermax North America, Inc.

9401-P Southern Pine Blvd.
Charlotte, NC 28273, U.S.
T +1 980 299 0035
office.america@fundermax.biz
www.fundermax.us

Fundermax Polska Sp. z o.o.

ul. Rybitwy 12
PL-30-722 Kraków
T +48 (0)12 65 34 528
infopoland@fundermax.biz

Fundermax Swiss AG

Industriestrasse 38
CH-5314 Kleindöttingen
T +41 (0)56 268 83 11
infoswiss@fundermax.biz
www.fundermax.com



Interior Delivery program



Interior Technique brochure

Fundermax GmbH

Klagenfurter Straße 87-89, A-9300 St. Veit/Glan
T: +43 (0)5 9494-0, F: +43 (0)5 9494-4200
office@fundermax.at
www.fundermax.com

