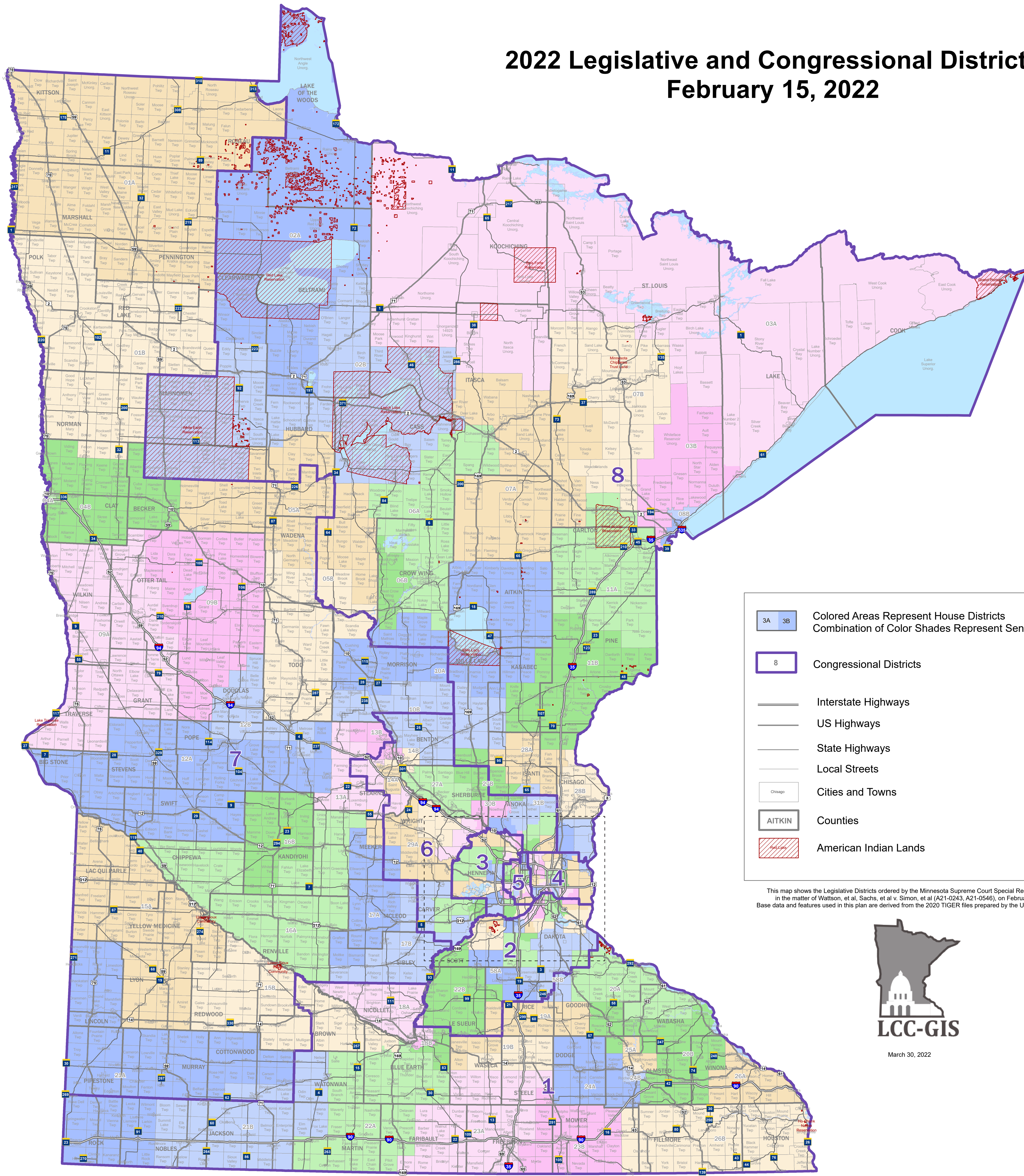


# 2022 Legislative and Congressional Districts February 15, 2022

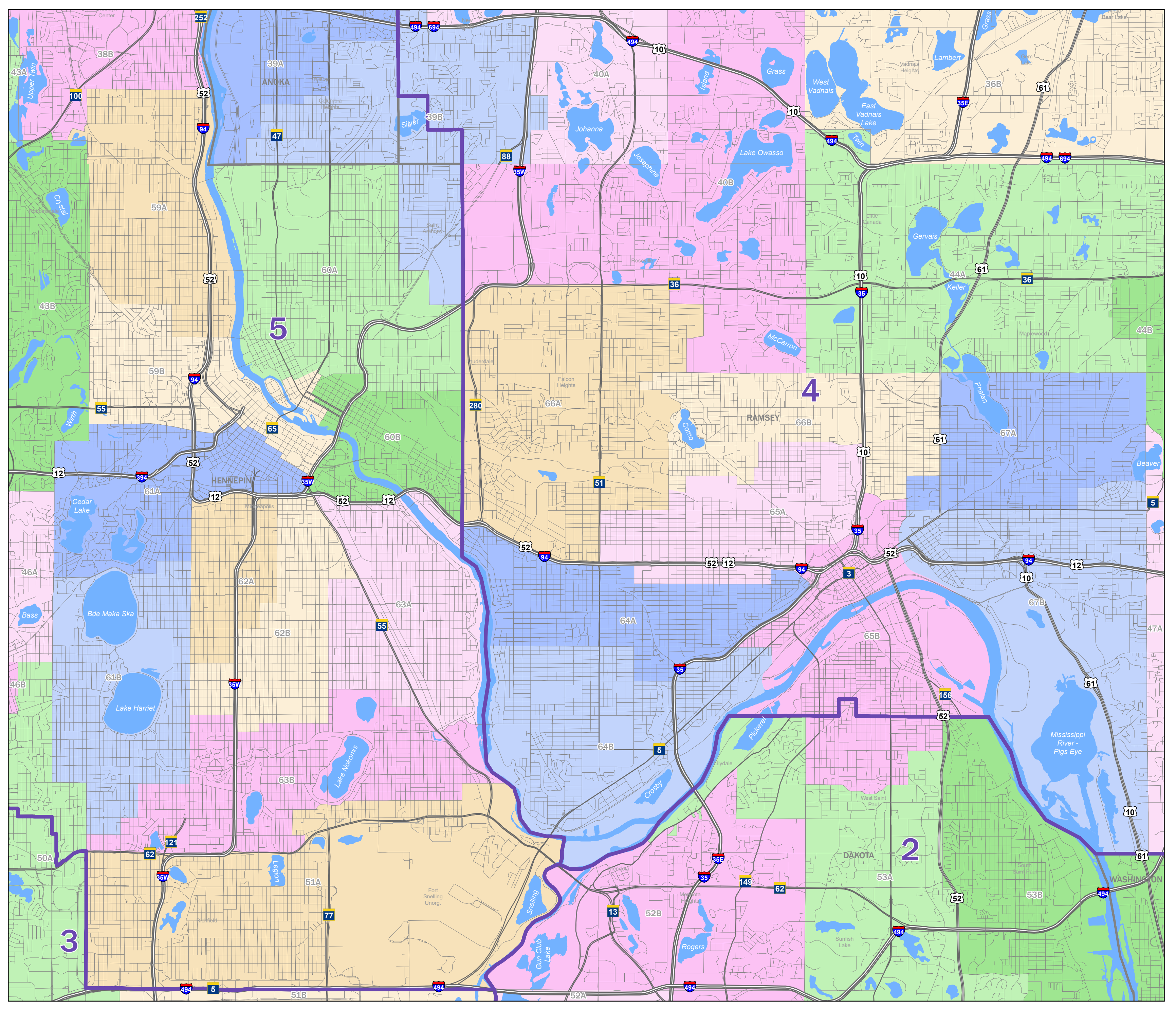


- 3A 3B Colored Areas Represent House Districts  
Combination of Color Shades Represent Senate Districts
- 8 Congressional Districts
- Interstate Highways
- US Highways
- State Highways
- Local Streets
- Cities and Towns
- AITKIN Counties
- American Indian Lands

This map shows the Legislative Districts ordered by the Minnesota Supreme Court Special Redistricting Panel in the matter of *Watson, et al. Sachs, et al v. Simon, et al* (A21-0243, A21-0546), on February 15, 2022. Base data and features used in this plan are derived from the 2020 TIGER files prepared by the U.S. Census Bureau.



Minneapolis and St. Paul



Metro Area

