

Collection Soltis.
Automatiquement bien.





Collection Soltis



Soltis Horizon 86

Applications

Stores toiles

Stores pour toits de terrasse

Volets

Propriétés

Compromis idéal entre la protection thermique et le confort visuel

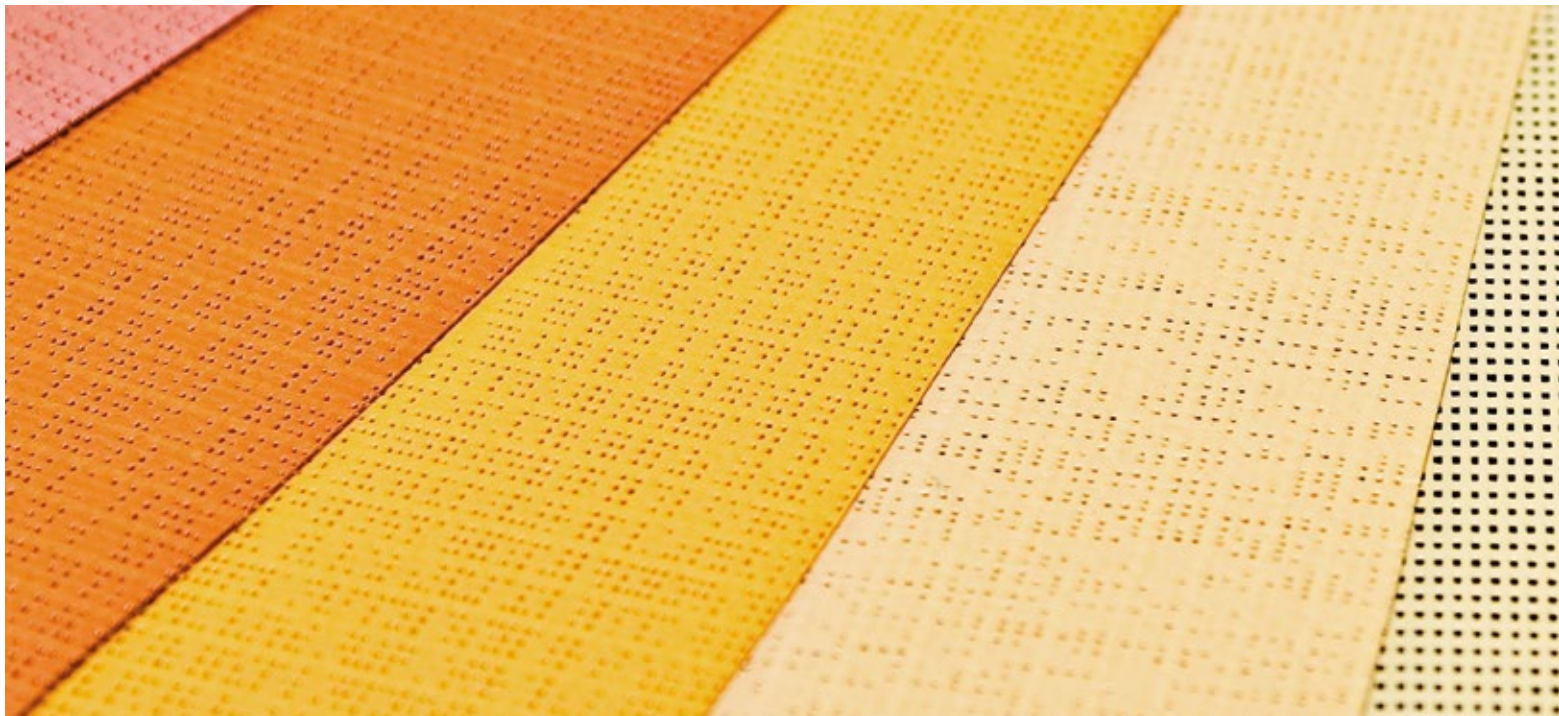
Excellente visibilité vers l'extérieur

Excellente résistance aux intempéries et aux UV

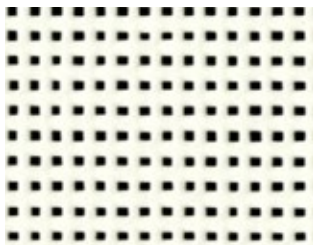
Léger, résistant, 100% recyclable

Résistance au feu B-s2,d0 (EU) / M1 (F, E) / Classe1 (I) / B1 (D) / Q1-Tr1 (A) /

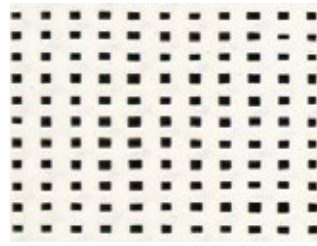
RF2 VKF 5.3 (CH)



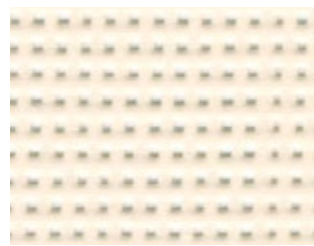
Soltis Horizon 86



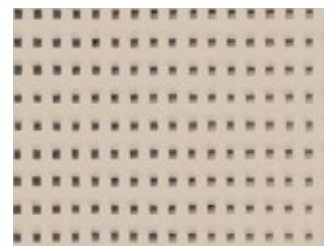
86-50690*



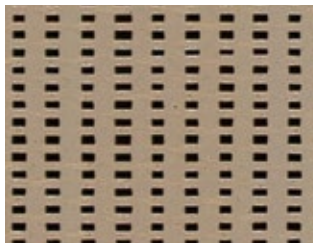
86-2044*



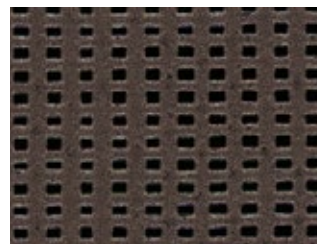
86-2175*



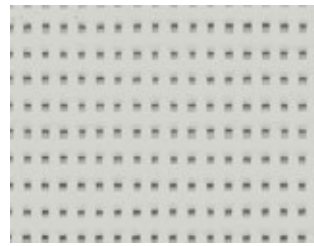
86-2135*



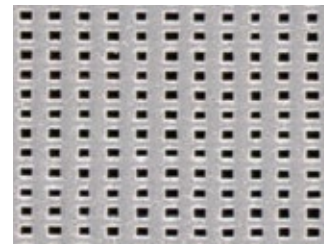
86-2012*



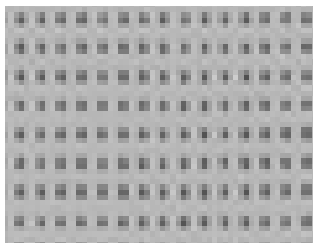
86-2043*



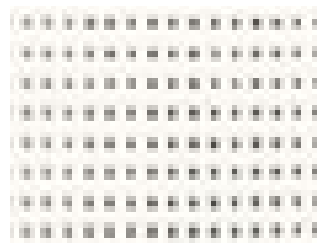
86-2171*



86-2048*



(A)

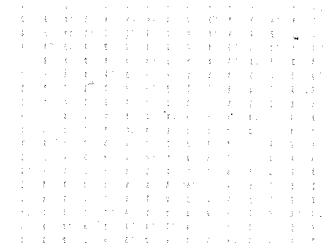


(B)

86-2051*

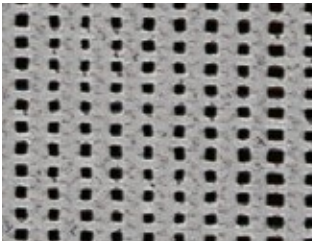
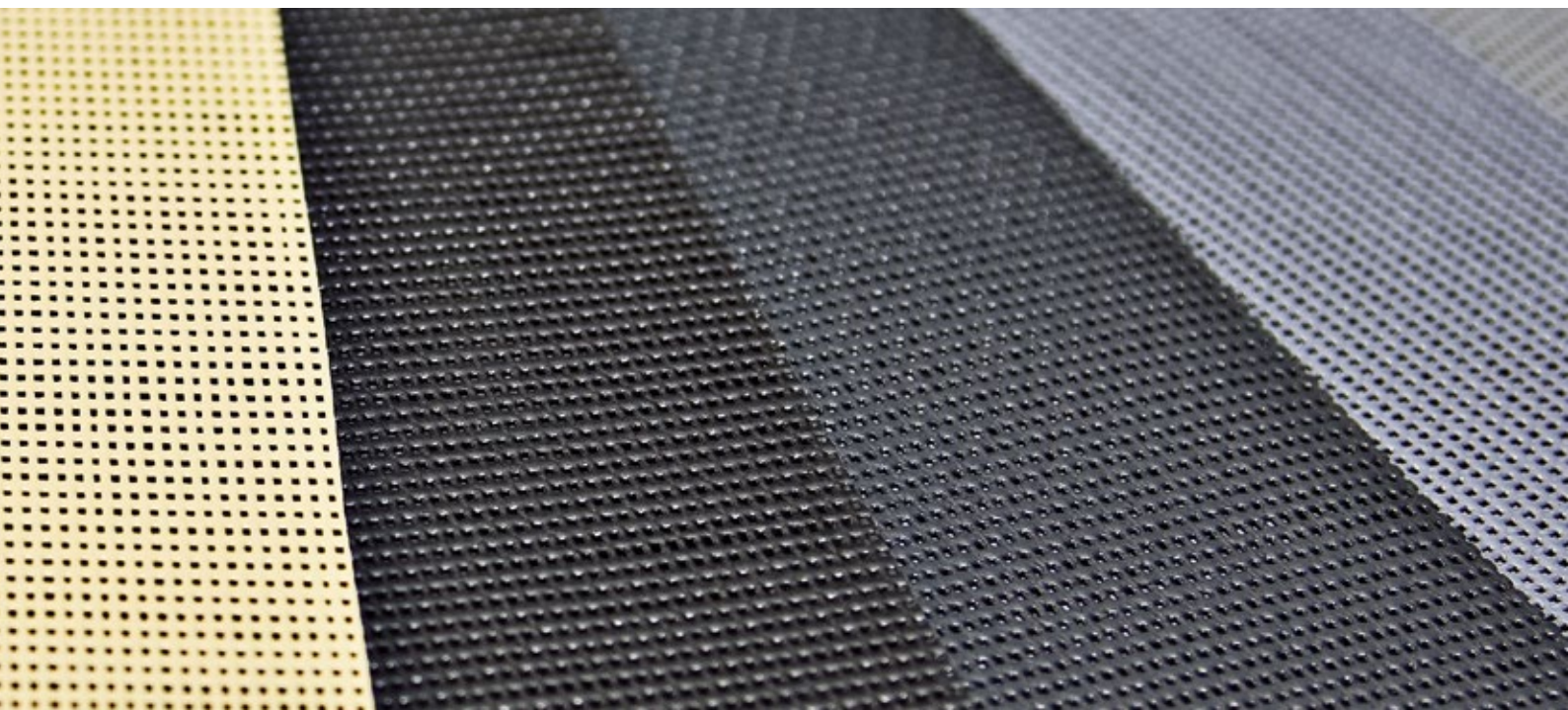


(A)

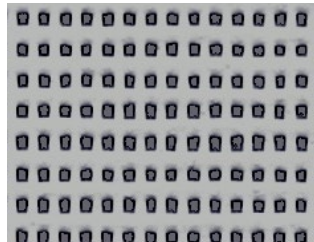


(B)

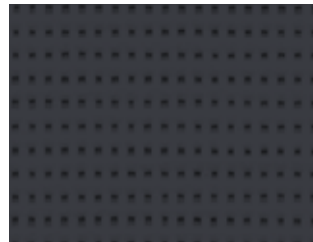
86-2046*



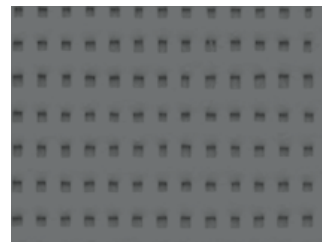
86-2045*



(A)



86-2068



(B)

86-2167*



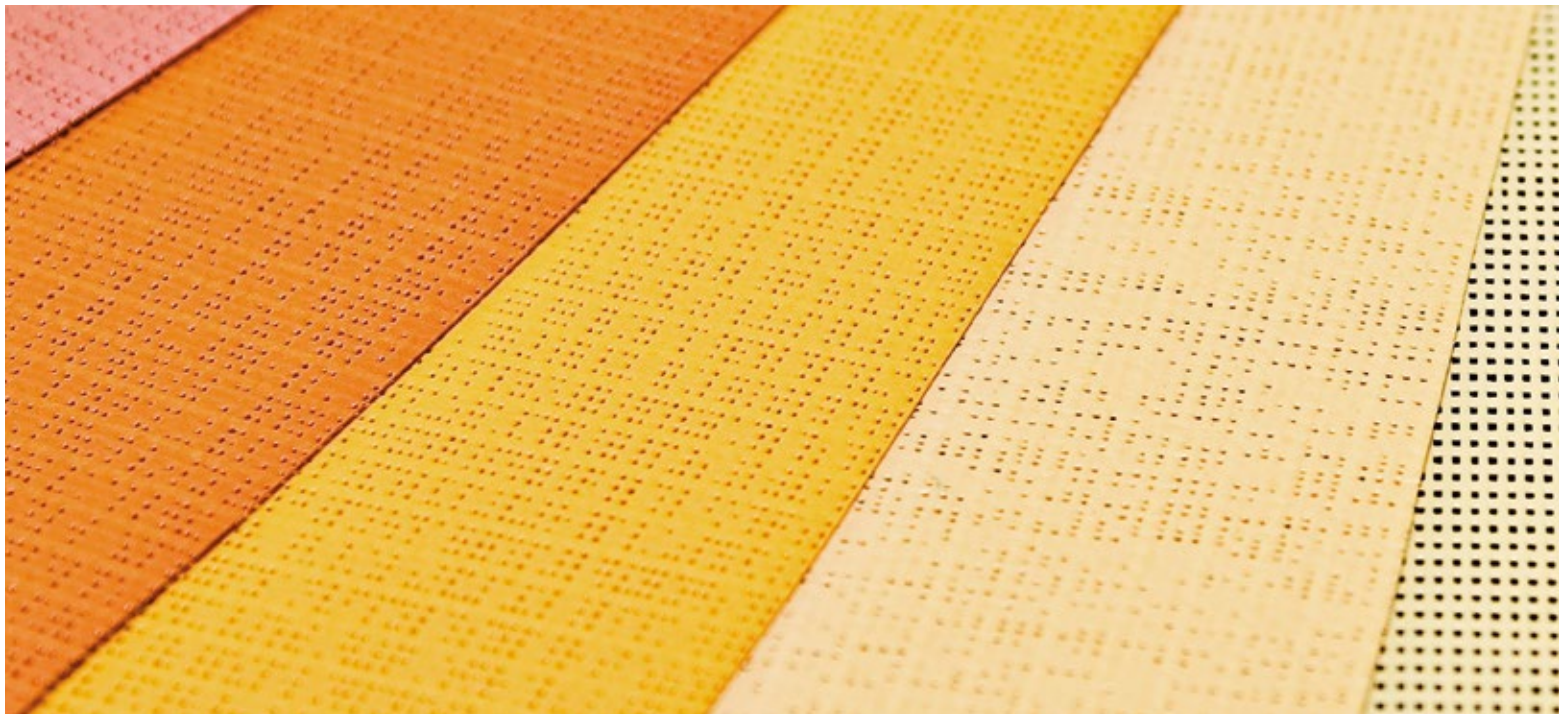
86-2047*



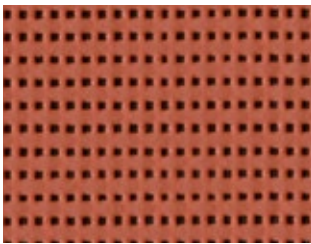
86-51176*

Largeur de toile standard : 177 cm

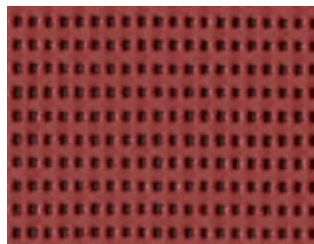
* également disponible en 267 cm de largeur



Soltis Horizon 86



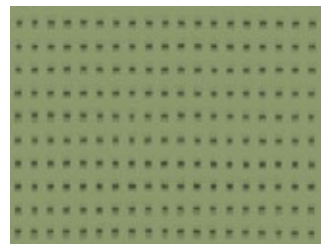
86-51180



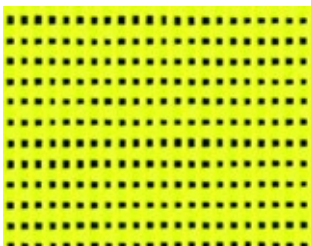
86-51181



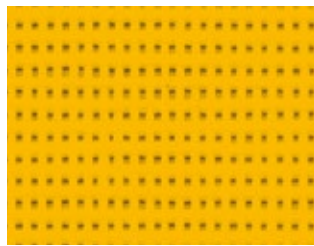
86-51182



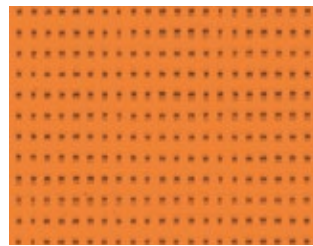
86-2158



86-2157



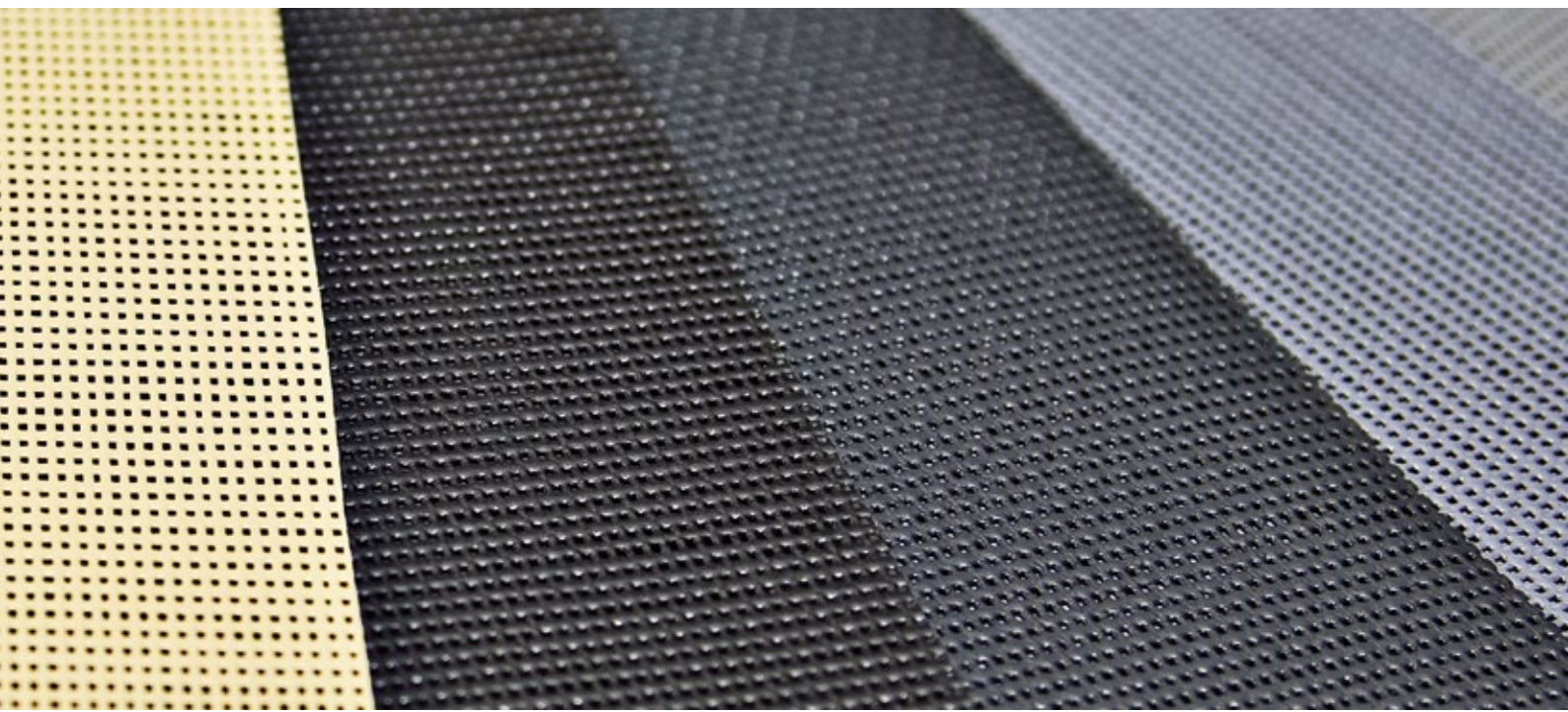
86-2166



86-8204



86-8255



Largeur de toile standard : 177 cm

* également disponible en 267 cm de largeur



Collection Soltis



Soltis Harmony 88

Applications

Stores toiles

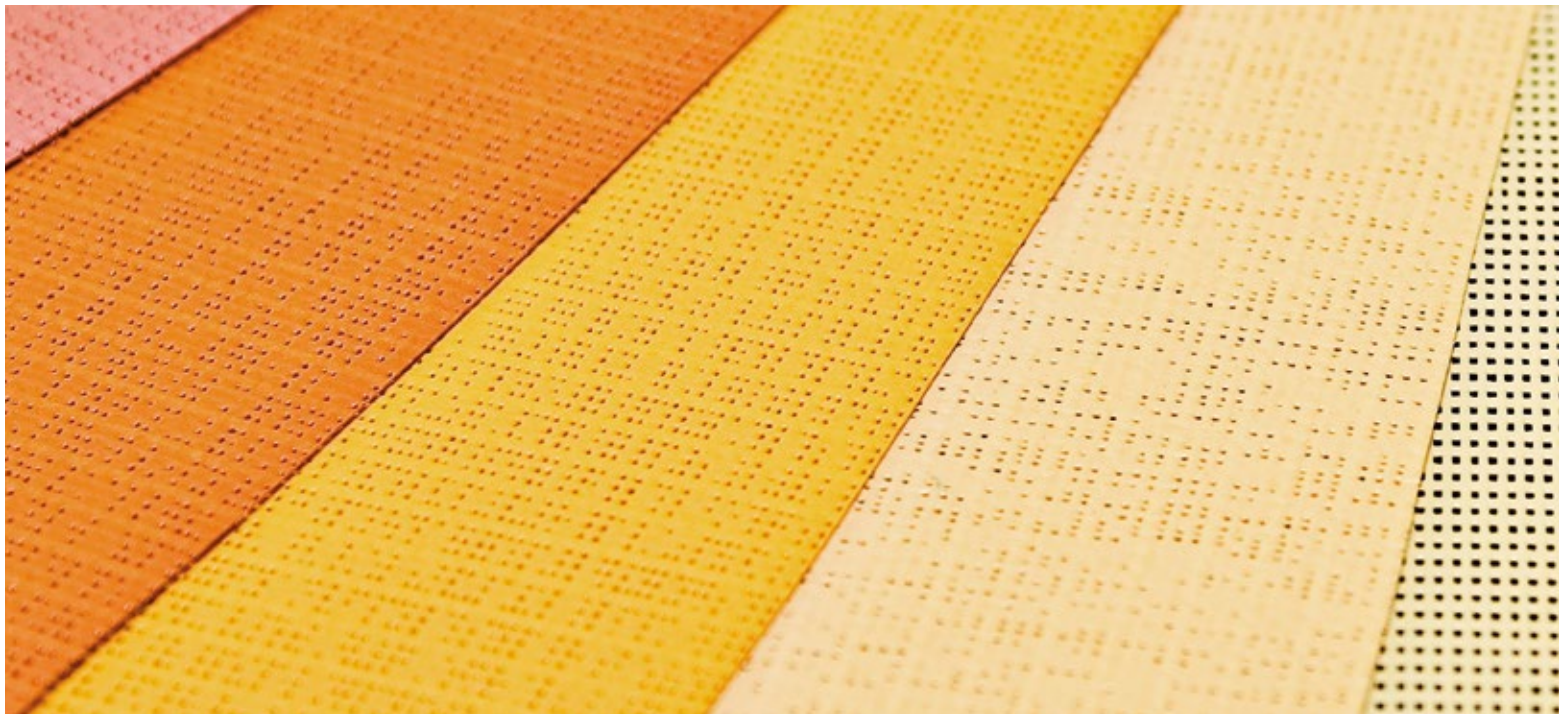
Propriétés

Equilibre parfait entre design, transparence et confort thermique.

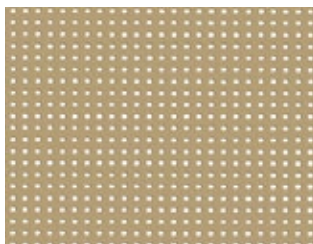
Excellente visibilité vers l'extérieur avec une trame régulière.

Jusqu'à 88% de la chaleur bloquée quand placé à l'extérieur.

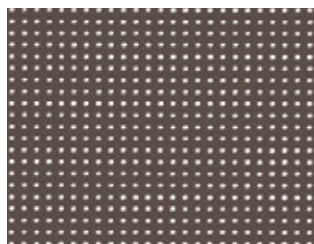
Résistance au feu B-s2,d0 (EU) / M1 (F, E) / Classe1 (I) / B1 (D) / Q1-Tr1 (A) / RF2 VKF 5.3 (CH)



Soltis Harmony 88



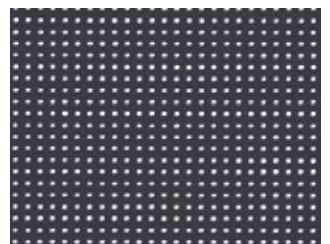
88-2012



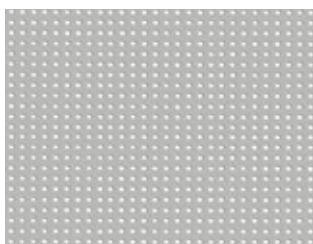
88-2043



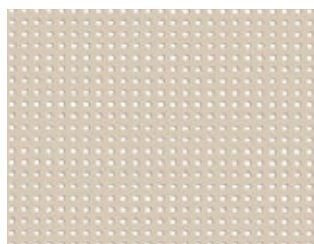
88-2044



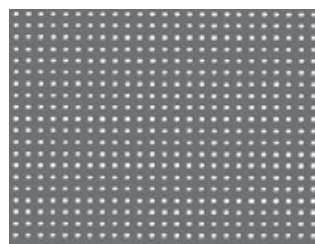
88-2047



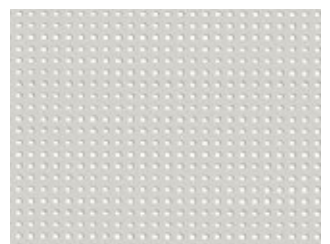
88-2048



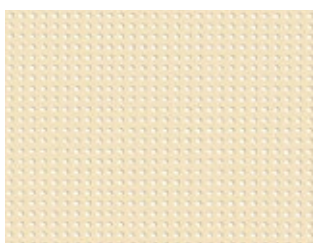
88-2135



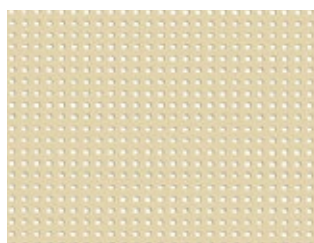
88-2167



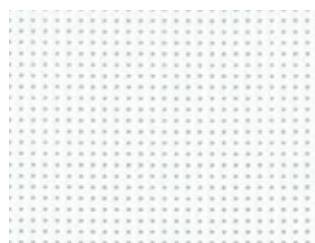
88-2171



88-2175



88-50265



88-50690

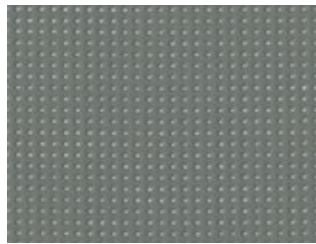


88-50850

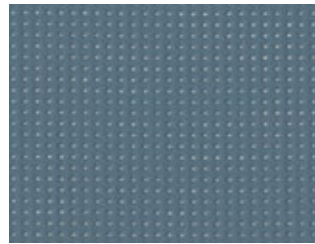
Les échantillons sont imprimés avec des couleurs standard et peuvent de ce fait légèrement différer des couleurs originales.



88-51176



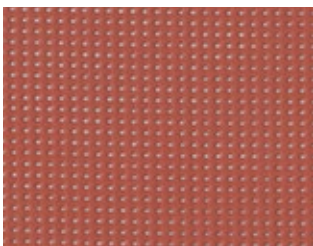
88-51177



88-51178



88-51179



88-51180

Largeur de toile : 177 cm - 267 cm de largeur





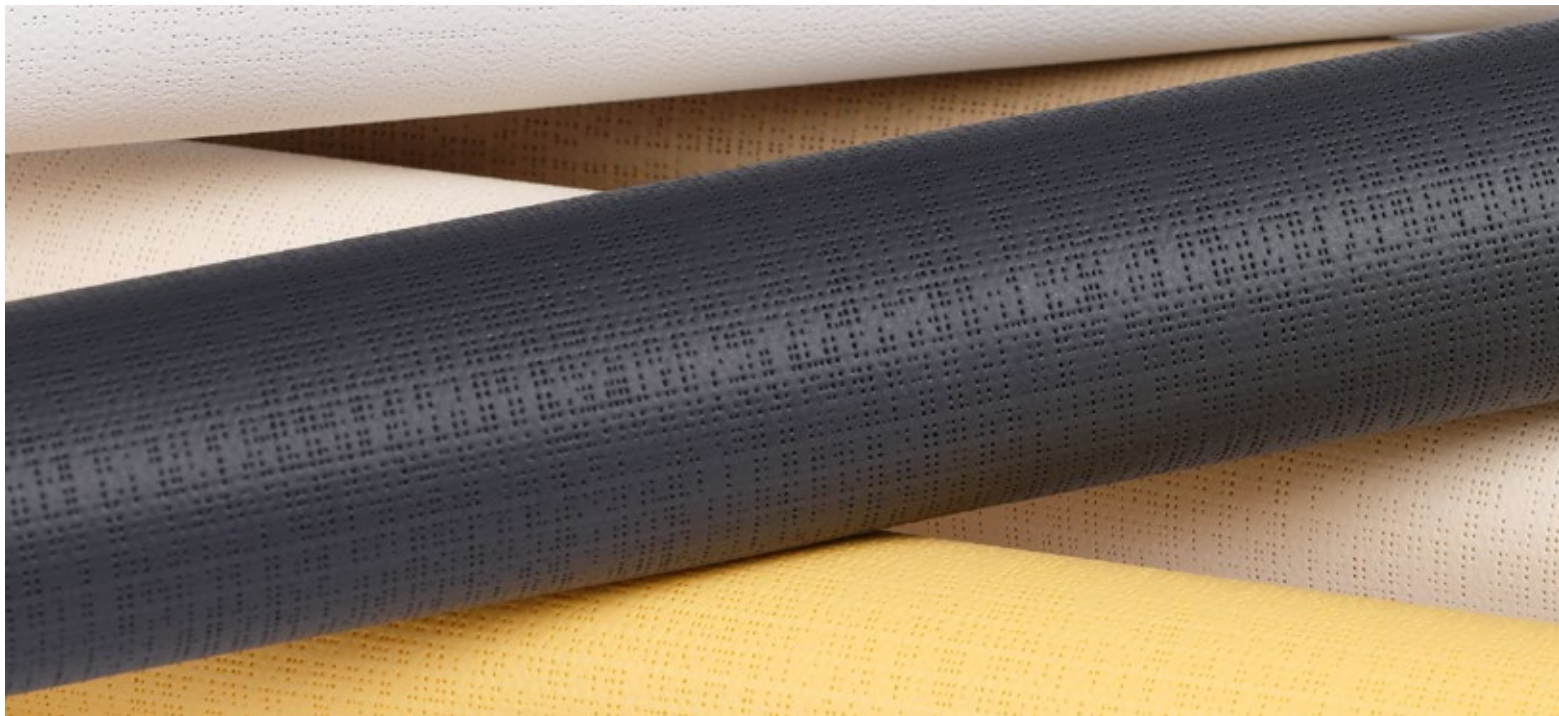
Soltis Perform 92

Applications

Stores toiles
Stores pour toits de terrasse
Volets

Propriétés

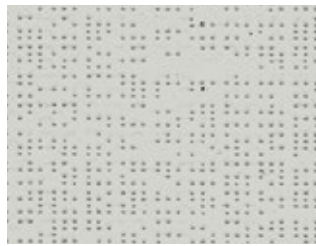
Protection thermique renforcée
Confort visuel et lumineux optimum
Excellente résistance aux intempéries et aux UV
Léger, résistant, 100% recyclable
Nombreux coloris au choix
Résistance au feu B-s2,d0 (EU) / M1 (F, E) / Classe1 (I) / B1 (D) / Q1-Tr1 (A) / RF2 VKF 5.3 (CH)



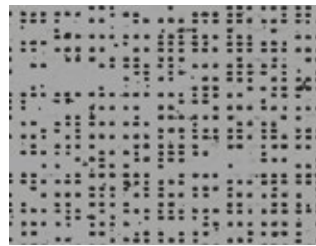
Soltis Perform 92



92-2044*



92-2171*

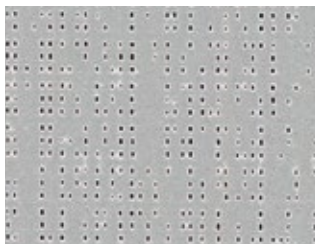


(A)

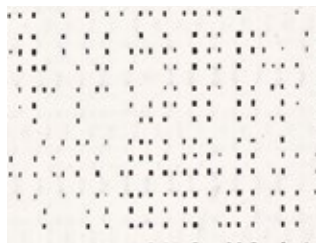


92-2068

(B)

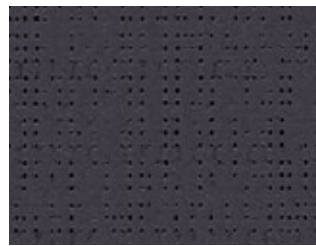


(A)

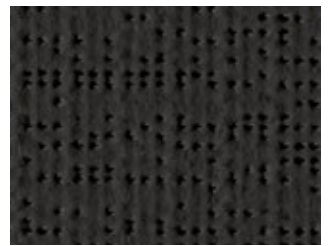


92-2051*

(B)



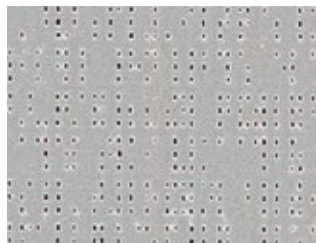
92-2047*



92-51176*

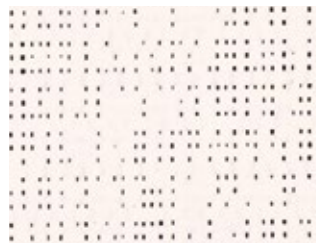


92-50272*



(A)

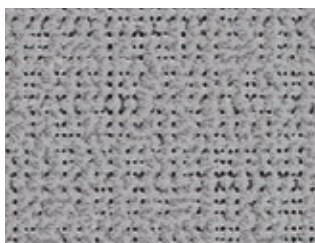
92-2046*



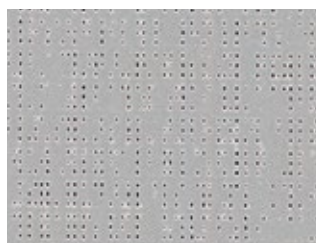
(B)



92-2167*



92-2045*



92-2048*

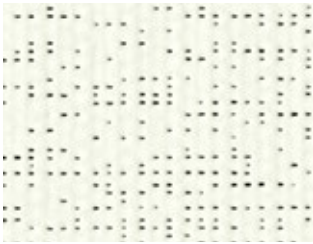


(A)

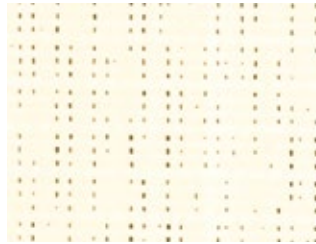


92-2074*

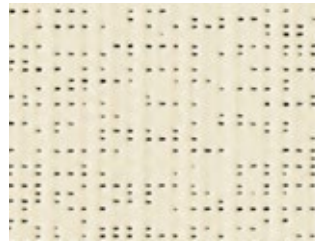
(B)



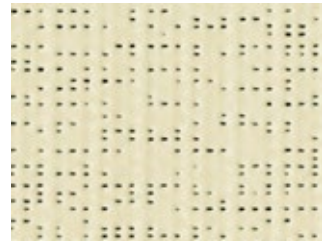
92-50690*



92-2175*



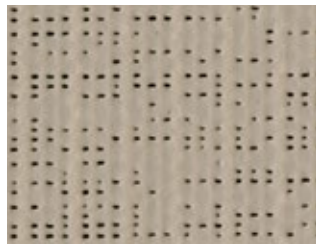
92-50843*



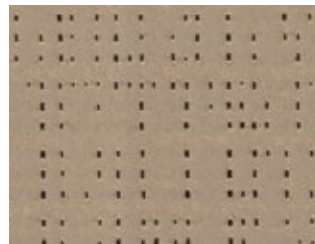
92-50303*



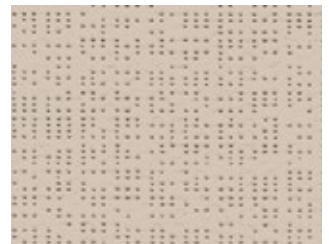
92-50265*



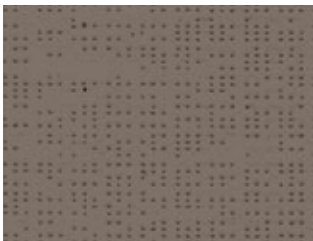
92-50850*



92-2012*



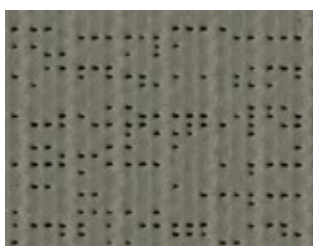
92-2135*



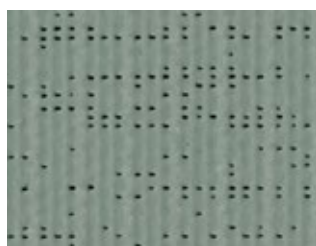
92-50266



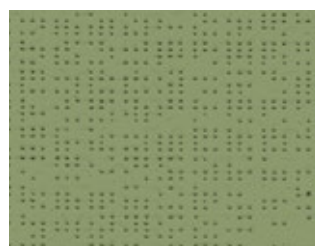
92-2043*



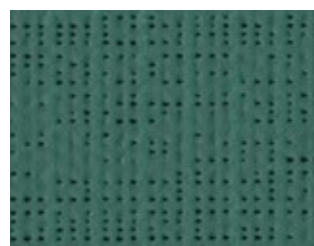
92-51177*



92-51179



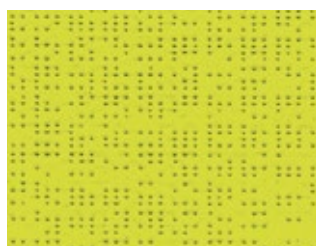
92-2158



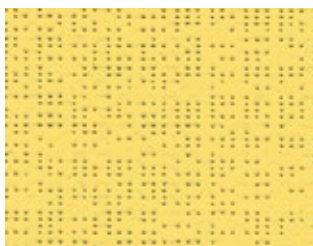
92-8056



92-2149



92-2157



92-50273



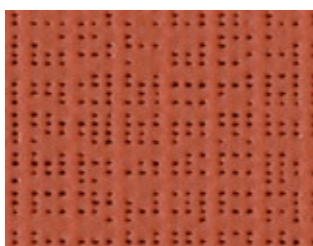
92-2166



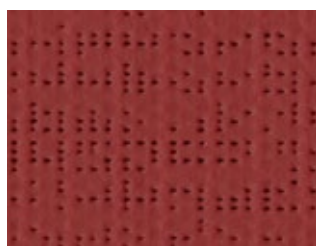
92-8204



92-50274



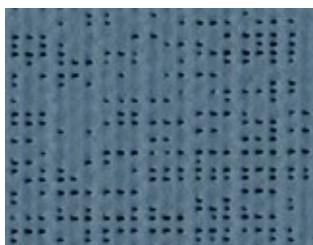
92-51180



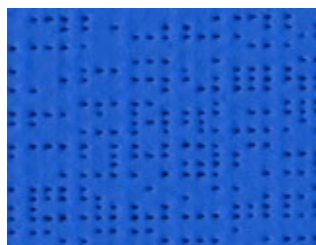
92-51181



92-8255



92-51178



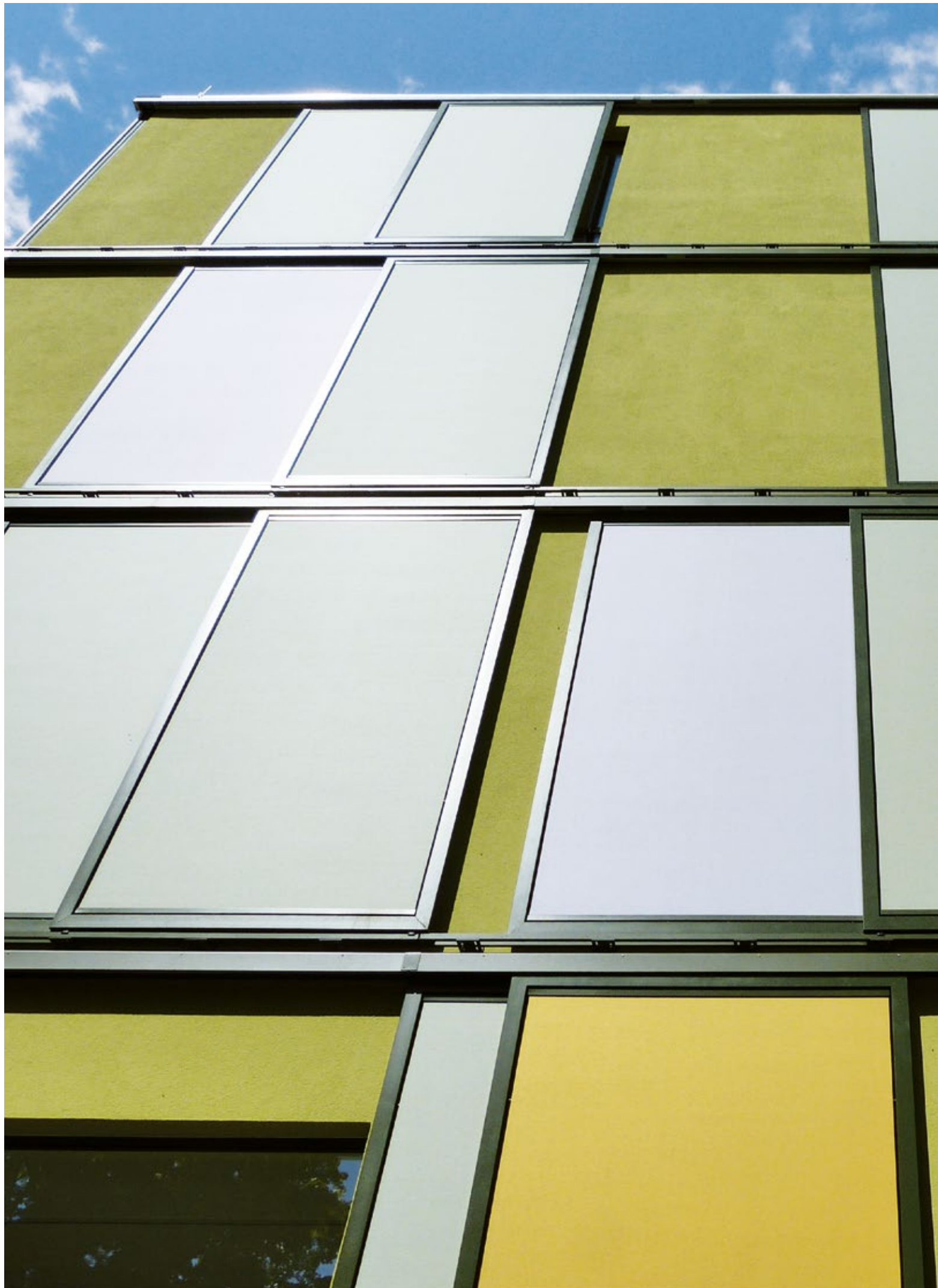
92-51182



92-2160

Largeur de toile standard : 177 cm

* également disponible en 267 cm de largeur







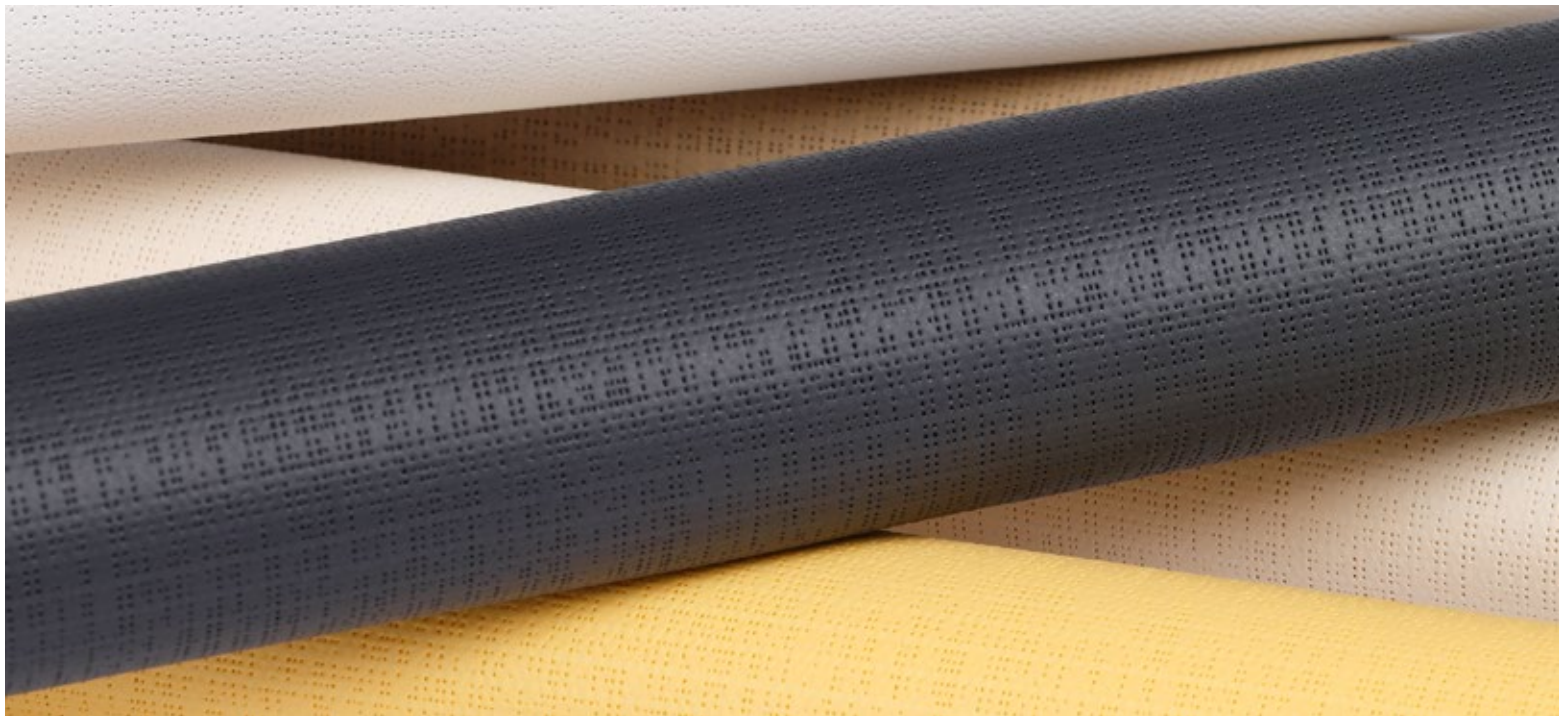
Soltis Veozip

Applications

Stores toiles extérieurs Soloscren IV
Stores toiles extérieurs Solozip (sur demande)

Propriétés

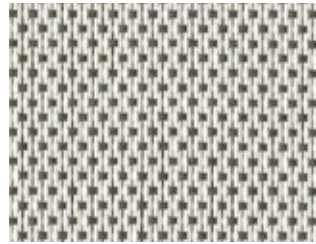
Composition à base de chanvre pour un aspect naturel et textile
Intégration parfaite dans les systèmes ZIP
Confort thermique optimal et contrôle de l'éblouissement
Filtre jusqu'à 96% des rayons UV
Résistance au feu B-s2,d0 (EU) / M1 (F, E) / Classe1 (I) / B1 (D)



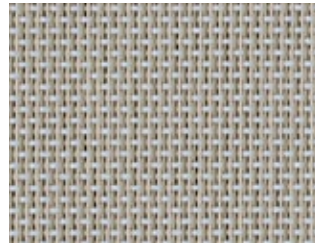
Soltis Veozip



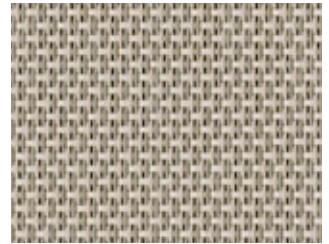
7605 - 51184



7605 - 51185



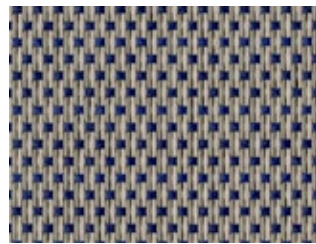
7605 - 51186



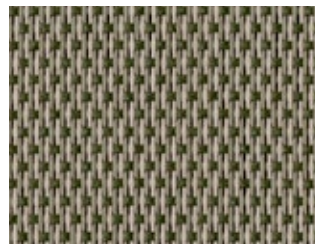
7605 - 51187



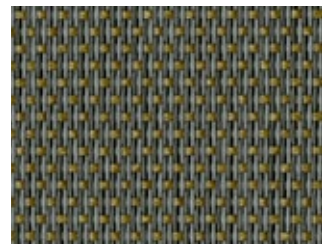
7605 - 51188



7605 - 51189



7605 - 51190

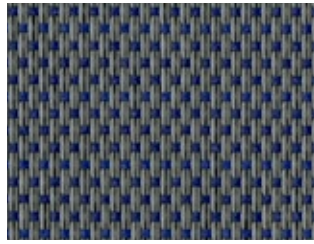


7605 - 51191

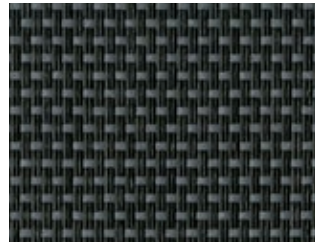
Les échantillons sont imprimés avec des couleurs standard et peuvent de ce fait légèrement différer des couleurs originales.



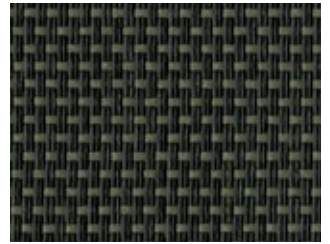
7605 - 51192



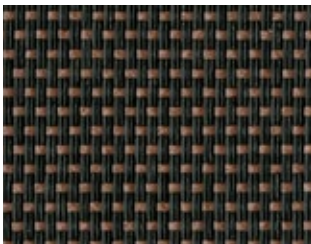
7605 - 51193



7605 - 51194



7605 - 51195



7605 - 51196



7605 - 51197



7605 - 51198





Soltis Opaque B92 et B702

Applications

Stores toiles

Stores intérieurs (B702)

Volets (B92)

Propriétés

Obscurcissant ou opaque

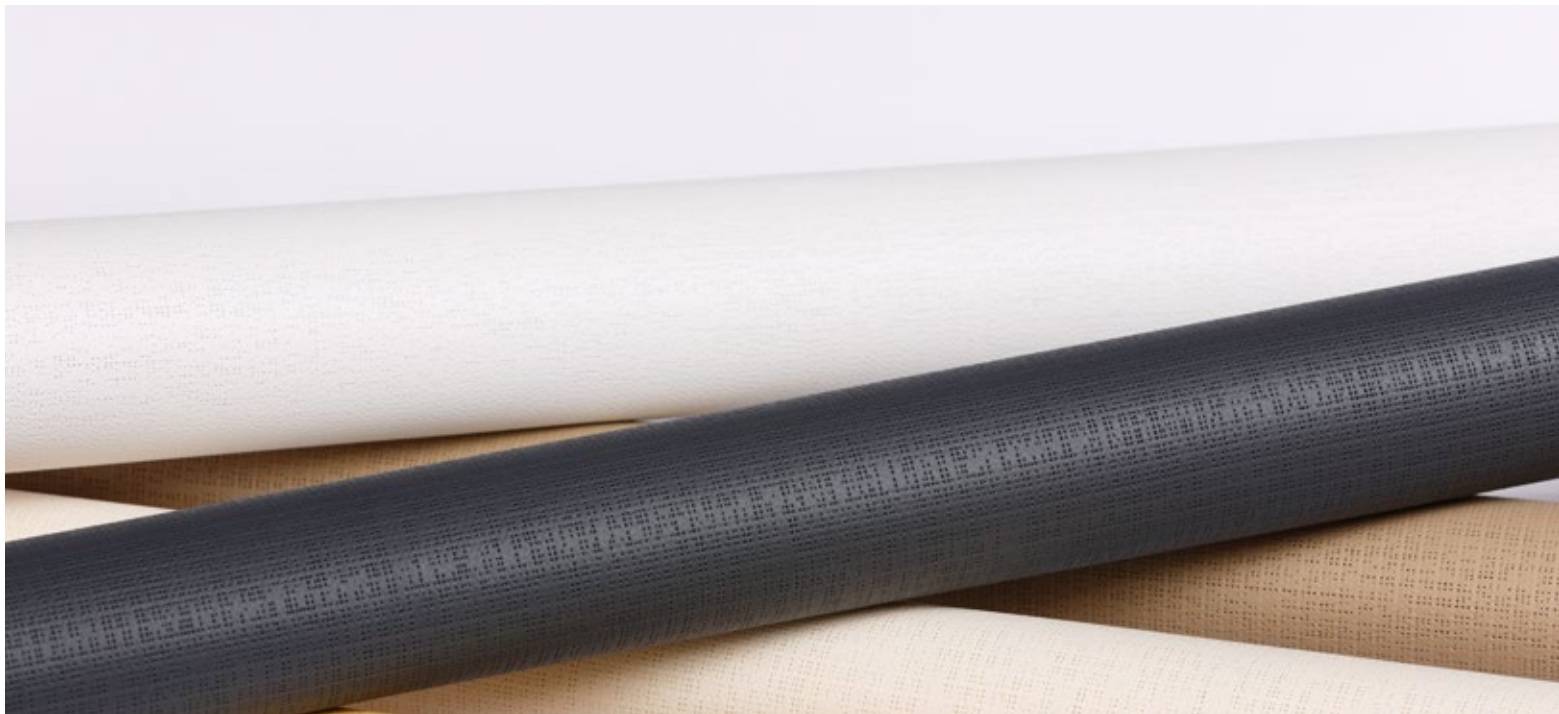
Protection thermique efficace

Résistance mécanique élevée

Léger, résistant, 100% recyclable

Résistance au feu B92: B1 / VKF 5.3 (VKF RF2) / B-s2, d0

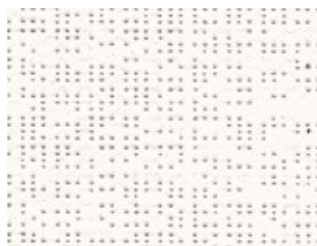
Résistance au feu B702: B-s2,d0 (EU) / Classe 2 (I) / B1 (D) / Q1-Tr1 (A) /
RF2 VKF 5.3 (CH)



Soltis Opaque B92 et B702

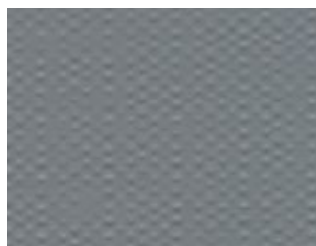
Largeur de toile standard B92: 170 cm

Largeur de toile standard B702: 177 cm

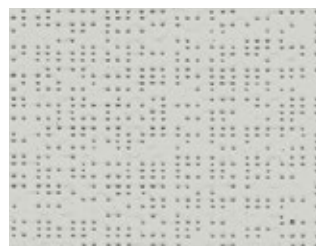


(B)

B92-1044



(A)



(B)

B92-2171

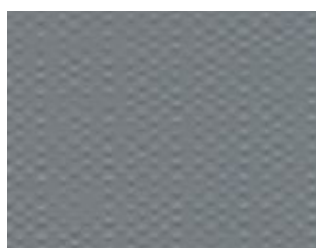


(A)



(B)

B92-1046



(A)

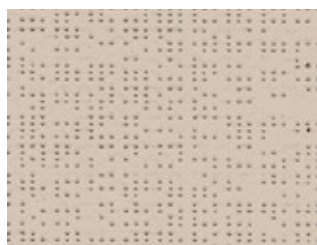


(B)

B92-1045



(A)



(B)

B92-2135



(A)



(B)

B92-1043

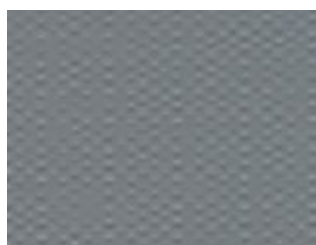


(A)



(B)

B92-51176

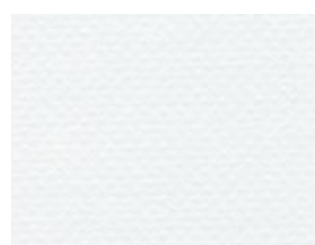


(A)



(B)

B702-455



(A)



Soltis Horizon 86

Classement au feu B-s2,d0 (EU) / M1 (F, E) / Classe1 (I) / B1 (D) / Q1-Tr1 (A) / RF2 VKF 5.3 (CH) Poids/m² 0,38kg Épaisseur 0,43mm

	T _e	R _e	A _e	T _v	g-tot _e	g-tot _i	
86-2012	0.18	0.27	0.55	0.16	0.08	0.24	
86-2043	0.15	0.11	0.74	0.15	0.07	0.28	
86-2044	0.29	0.59	0.12	0.28	0.11	0.15	
86-2045	0.16	0.29	0.55	0.16	0.08	0.23	
86-2046	A	0.22	0.40	0.38	0.21	0.10	0.16
	B	0.22	0.55	0.23	0.21	0.09	0.20
86-2047	0.17	0.07	0.76	0.17	0.07	0.28	
86-2048	0.19	0.39	0.42	0.19	0.09	0.20	
86-2051	A	0.22	0.40	0.38	0.20	0.09	0.13
	B	0.22	0.60	0.18	0.20	0.09	0.2
86-2068	A	0.17	0.31	0.52	0.17	0.08	0.23
	B	0.17	0.07	0.76	0.17	0.09	0.28
86-2135	0.24	0.39	0.37	0.22	0.09	0.21	

	T _e	R _e	A _e	T _v	g-tot _e	g-tot _i
86-2157	0.25	0.44	0.31	0.21	0.08	0.21
86-2158	0.18	0.25	0.57	0.16	0.08	0.25
86-2166	0.31	0.45	0.24	0.28	0.11	0.21
86-2167	0.17	0.14	0.69	0.17	0.07	0.26
86-2171	0.22	0.36	0.42	0.20	0.08	0.21
86-2175	0.30	0.57	0.13	0.28	0.11	0.16
86-8204	0.29	0.41	0.30	0.21	0.1	0.23
86-8255	0.21	0.24	0.55	0.14	0.07	0.27
86-50690	0.28	0.61	0.11	0.27	0.11	0.14
86-51176	0.14	0.05	0.81	0.14	0.07	0.29
86-51180	0.17	0.24	0.59	0.15	0.07	0.26
86-51181	0.18	0.14	0.68	0.16	0.08	0.28
86-51182	0.18	0.23	0.59	0.15	0.07	0.27

Soltis Harmony 88

Classement au feu B-s2,d0 (EU) / M1 (F, E) / Classe1 (I) / B1 (D) / Q1-Tr1 (A) / RF2 VKF 5.3 (CH) Poids/m² 0,36kg Épaisseur 0,45mm

	T _e	R _e	A _e	T _v	g-tot _e	g-tot _i
88-2012	0.12	0.29	0.59	0.10	0.07	0.23
88-2043	0.09	0.12	0.79	0.08	0.07	0.28
88-2044	0.24	0.65	0.11	0.22	0.13	0.12
88-2047	0.09	0.08	0.83	0.09	0.07	0.28
88-2048	0.13	0.44	0.43	0.12	0.08	0.19
88-2053	0.08	0.06	0.86	0.08	0.08	0.20
88-2135	0.14	0.42	0.44	0.11	0.07	0.26
88-2167	0.09	0.16	0.75	0.09	0.08	0.20
88-2171	0.13	0.38	0.49	0.11	0.12	0.14

	T _e	R _e	A _e	T _v	g-tot _e	g-tot _i
88-2175	0.24	0.62	0.14	0.21	0.12	0.14
88-50265	0.15	0.44	0.41	0.12	0.08	0.20
88-50690	0.21	0.67	0.12	0.19	0.08	0.12
88-50850	0.11	0.27	0.62	0.09	0.05	0.24
88-51176	0.09	0.05	0.86	0.09	0.05	0.29
88-51177	0.10	0.16	0.74	0.10	0.05	0.26
88-51178	0.10	0.17	0.73	0.09	0.05	0.26
88-51179	0.11	0.25	0.64	0.10	0.05	0.25
88-51180	0.12	0.24	0.64	0.10	0.05	0.26

Soltis Veozip

Classement au feu B-s2,d0 (EU) / M1 (F, E) / Classe1 (I) / B1 (D)

Poids/m² 0,60kg Épaisseur 0,90mm

	T _e	R _e	A _e	T _v	g-tot _e
7605-51184	0.09	0.59	0.32	0.08	0.07
7605-51185	0.09	0.50	0.41	0.08	0.07
7605-51186	0.06	0.37	0.57	0.06	0.06
7605-51187	0.07	0.37	0.56	0.07	0.06
7605-51188	0.05	0.29	0.66	0.04	0.05
7605-51189	0.05	0.28	0.67	0.05	0.05
7605-51190	0.06	0.27	0.67	0.05	0.05
7605-51191	0.07	0.18	0.75	0.06	0.06
7605-51192	0.08	0.13	0.79	0.07	0.07

	T _e	R _e	A _e	T _v	g-tot _e
7605-51193	0.06	0.17	0.77	0.06	0.06
7605-51194	0.05	0.07	0.88	0.05	0.06
7605-51195	0.05	0.07	0.88	0.05	0.05
7605-51196	0.06	0.10	0.84	0.06	0.06
7605-51197	0.05	0.08	0.87	0.05	0.05
7605-51198	0.05	0.05	0.90	0.05	0.06

Soltis Perform 92

Classement au feu B-s2,d0 (EU) / M1 (F, E) / Classe1 (I) / B1 (D) / Q1-Tr1 (A) / RF2 VKF 5.3 (CH) Poids/m² 0,42kg Épaisseur 0,45mm

		T _e	R _e	A _e	T _v	g-tot _e	g-tot _i			T _e	R _e	A _e	T _v	g-tot _e	g-tot _i
92-2012		0.07	0.30	0.63	0.06	0.04	0.24	92-2171		0.08	0.41	0.21	0.06	0.04	0.20
92-2043		0.04	0.13	0.83	0.04	0.04	0.28	92-2175		0.19	0.65	0.16	0.17	0.07	0.14
92-2044		0.19	0.68	0.13	0.17	0.07	0.11	92-8056		0.02	0.10	0.88	0.02	0.03	0.28
92-2045		0.04	0.35	0.61	0.04	0.03	0.22	92-8204		0.21	0.45	0.34	0.11	0.06	0.23
92-2046	A	0.12	0.46	0.42	0.10	0.05	0.18	92-8255		0.12	0.28	0.60	0.04	0.05	0.27
	B	0.12	0.63	0.25	0.10	0.05	0.14	92-50265		0.09	0.49	0.42	0.06	0.04	0.18
92-2047		0.05	0.08	0.87	0.05	0.04	0.28	92-50266		0.04	0.19	0.77	0.04	0.03	0.26
92-2048		0.08	0.46	0.46	0.08	0.04	0.18	92-50272		0.12	0.55	0.33	0.09	0.05	0.16
92-2051	A	0.12	0.49	0.39	0.11	0.06	0.17	92-50273		0.08	0.42	0.50	0.05	0.04	0.21
	B	0.12	0.70	0.18	0.11	0.05	0.10	92-50274		0.08	0.35	0.57	0.04	0.04	0.24
92-2068	A	0.04	0.34	0.62	0.04	0.03	0.22	92-50303		0.15	0.63	0.22	0.10	0.05	0.15
	B	0.04	0.08	0.88	0.04	0.04	0.28	92-50843		0.13	0.62	0.25	0.10	0.05	0.14
92-2074	A	0.04	0.37	0.59	0.04	0.03	0.21	92-50850		0.05	0.31	0.64	0.03	0.03	0.23
	B	0.04	0.25	0.71	0.04	0.03	0.24	92-50690		0.17	0.73	0.10	0.15	0.06	0.10
92-2135		0.11	0.46	0.43	0.08	0.04	0.19	92-51176		0.03	0.05	0.92	0.03	0.03	0.29
92-2149		0.05	0.16	0.79	0.04	0.04	0.27	92-51177		0.03	0.18	0.79	0.03	0.03	0.26
92-2157		0.15	0.51	0.34	0.10	0.05	0.20	92-51178		0.05	0.20	0.75	0.04	0.03	0.26
92-2158		0.07	0.28	0.65	0.05	0.03	0.24	92-51179		0.06	0.29	0.65	0.04	0.03	0.24
92-2160		0.11	0.36	0.53	0.05	0.04	0.24	92-51180		0.06	0.27	0.67	0.03	0.03	0.26
92-2166		0.21	0.54	0.25	0.17	0.07	0.19	92-51181		0.04	0.17	0.79	0.03	0.03	0.28
92-2167		0.06	0.19	0.75	0.05	0.04	0.26	92-51182		0.08	0.26	0.66	0.04	0.03	0.27

Soltis Blackout B92

Classement au feu B-s2,d0 (EU) / Classe 2 (I) / B1 (D) / Q1-Tr1 (A) / RF2 VKF 5.3 (CH) Poids/m² 0,65kg Épaisseur 0,60mm

		T _e	R _e	A _e	T _v	g-tot _e	g-tot _i			T _e	R _e	A _e	T _v	g-tot _e	g-tot _i
B92-1043		0.00	0.13	0.87	0.00	0.02	0.28	B92-2135	A	0.00	0.47	0.53	0.00	0.02	0.18
B92-1044		0.00	0.70	0.30	0.00	0.01	0.27	B92-2171	B	0.00	0.45	0.55	0.00	0.02	0.18
B92-1045		0.00	0.38	0.62	0.00	0.02	0.19	B92-51176		0.00	0.06	0.94	0.00	0.02	0.28
B92-1046		0.00	0.49	0.51	0.00	0.02	0.17	Verso		0.00	0.29	0.71	0.00	0.03	0.22

Soltis Blackout B702

Classement au feu B-s2,d0 (EU) / M2 (F, E) / Classe 2 (I) / B1 (D) / Q1-Tr1 (A) / RF2 VKF 5.3 (CH) Poids/m² 0,54 kg * 0,65 kg ** 0,75 kg
Épaisseur 0,47 mm * 0,53 mm ** 0,60 mm

		T _e	R _e	A _e	T _v	g-tot _i
B702-455**	A	0.00	0.72	0.28	0.01	0.15
	B	0.00	0.06	0.94	0.04	0.29

A_e Facteur d'absorption solaire

R_e Facteur de réflexion solaire

T_e Facteur de transmission solaire

T_v Facteur de transmission lumineuse

g-tot_e Facteur global de transmission d'énergie pour une protection solaire extérieure „fermée“ avec vitrage, calcul selon SN EN 13363-1-A1, vitrage de référence C selon EN 14501, g=0.59, U=1.20 [W/m²K]

g-tot_i Facteur solaire intérieur - vitrage de type C selon EN 14501, g=0.59, U=1.20 [W/m²K]



www.griessergroup.com

