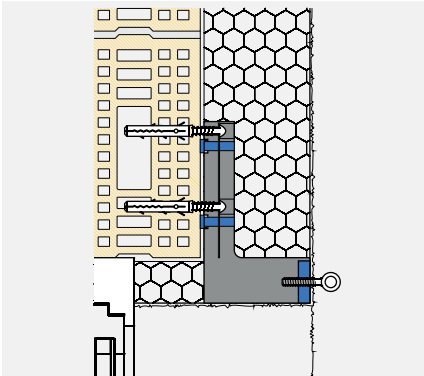


**Wing shutters from Griesser.**  
**Fastening in thermal insulation systems**

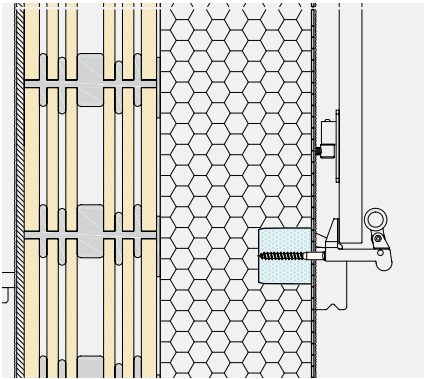


## Example with Griesser window shutters, Fastening to the facade

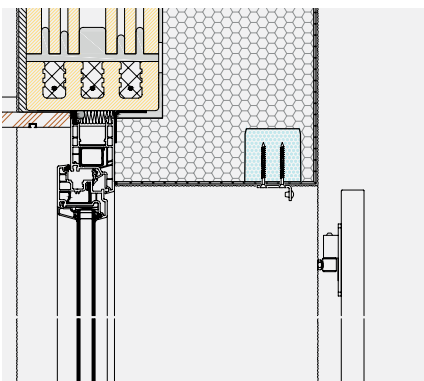
### TECHNOLOGY IN DETAIL



**1** Fastening the clamp next to the window with support bracket K1-PE



**2** Fastening the retention element in the facade with ZyRillo-EPS Ø 70 installation cylinder



**3** Fastening the stop bracket with ZyRillo-EPS Ø 70 fixation cylinder



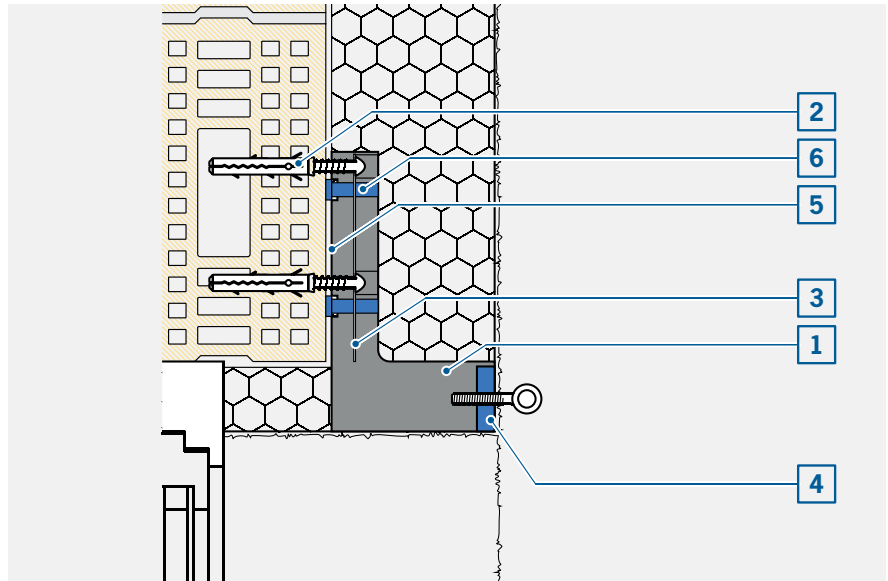
### ADVANTAGES

- Standard solution
- Thermal bridge-free installation
- No injury to the facade shell
- No ingress of water
- Simple and secure installation

## STRUCTURE OF THE SUPPORT BRACKET K1-PE (EU)



Support angle  
K1-PE

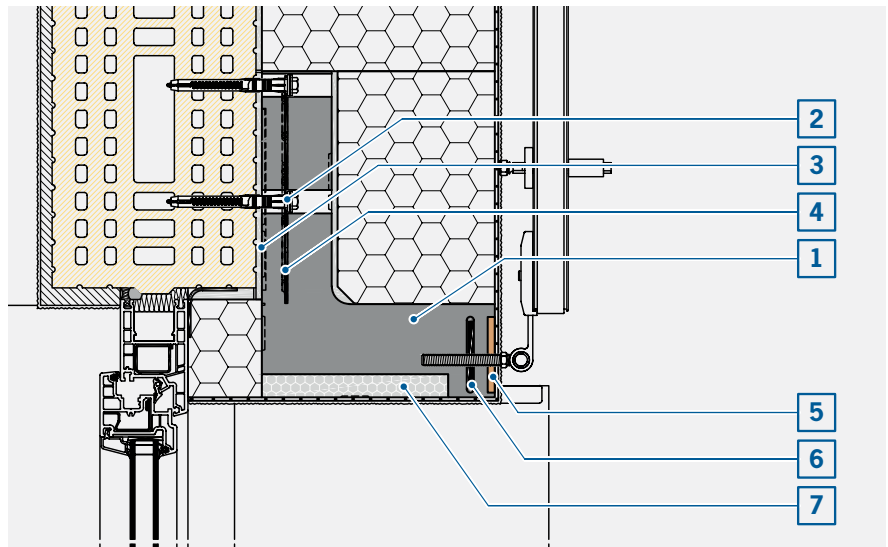


- 1 Support bracket
- 2 Screw plug
- 3 Threaded connection on subsurface via fiber-reinforced plastic insert without adhesive mortar
- 4 Plastic insert for the threaded connection with wing shutters
- 5 PK foam
- 6 Adjustable foot for fastening

## ASSEMBLY OF SUPPORT ANGLE TRA-WIK-ALU-RF



Support angle  
TRA-WIK-ALU-RF

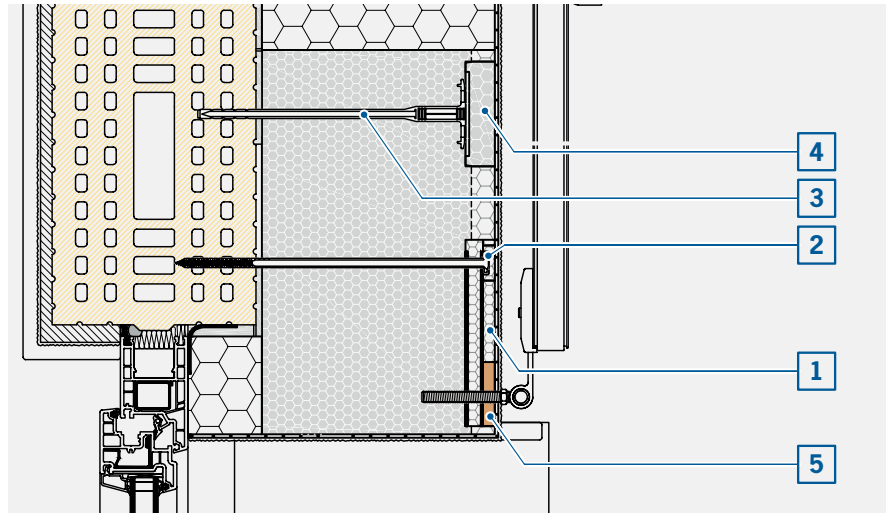


- 1 Support bracket
- 2 Screw plug
- 3 Adhesive mortar
- 4 Threaded connection with subsurface over sheet metal insert
- 5 Compact plate for pressure distribution
- 6 Aluminum profile for threaded connection with wing shutters
- 7 Insert made of EPS

## STRUCTURE OF THE CLAMP CARRIER ELEMENT K1-EPS



K1-EPS



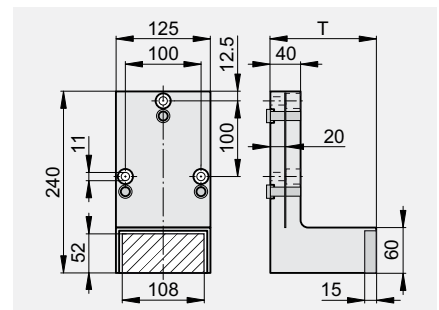
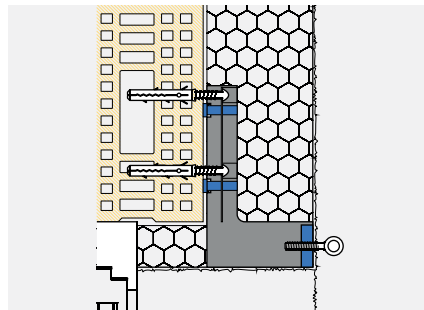
- 1 Clamp carrier element
- 2 Screw plug EJOT SDF-K
- 3 Insulation plate plug (with non-load-bearing subsurface)
- 4 EPS rondelle
- 5 Insert for the threaded connection with wing shutters

## INSTALLATION SITUATIONS

### Clamps

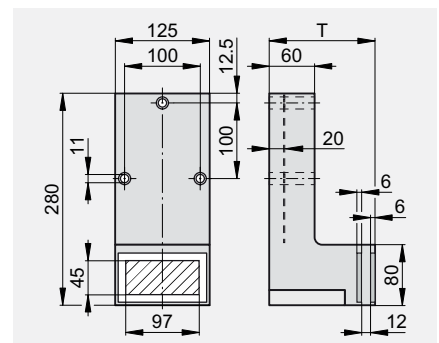
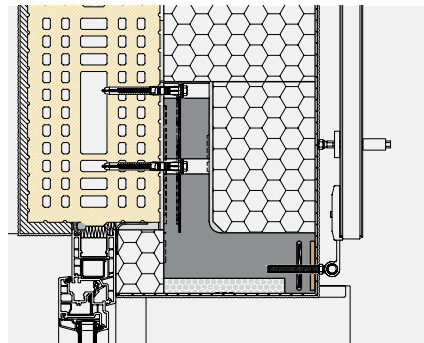
Fastening with support bracket

Insulation thickness  
T: 60, 80, ... 200 mm



Standard element K1-PE for lightweight wing shutters (EU)

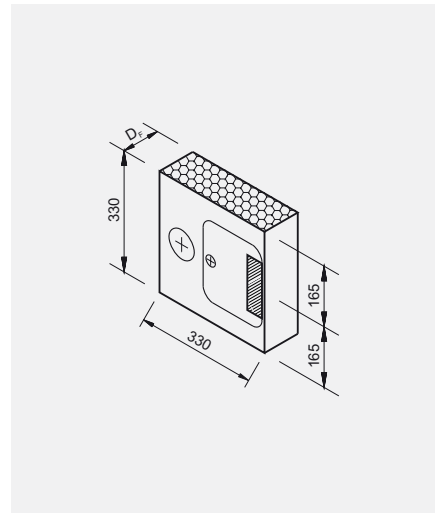
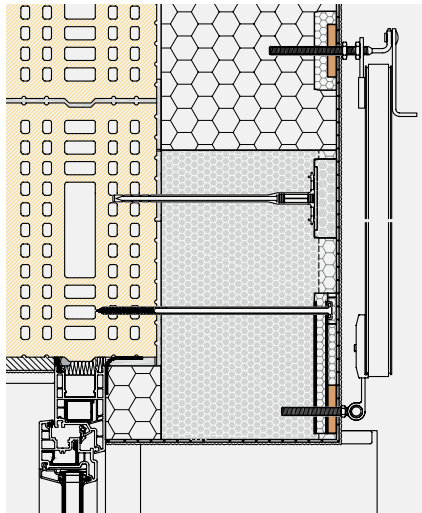
Insulation thickness  
T: 80, 100, ... 300 mm



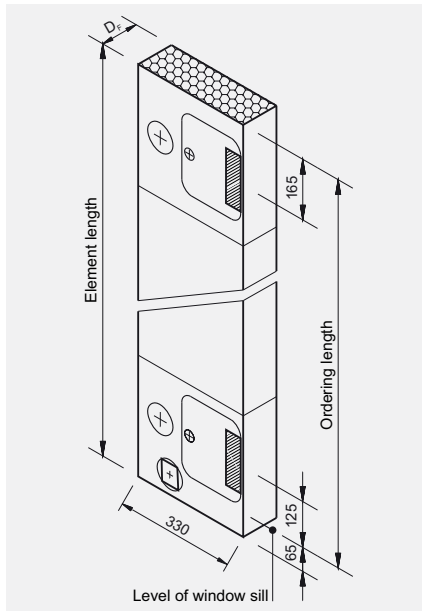
Standard element TRA-WIK-ALU-RF for medium-heavy to heavy wing shutters

Fastening with clamp carrier element

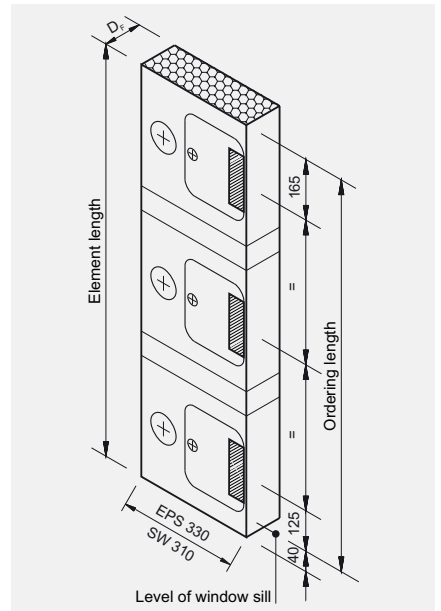
Insulation thickness  
T: 60, 80, ... 300 mm



Standard element K1-EPS



Standard element K2R-EPS for 2 clamps  
and retention element

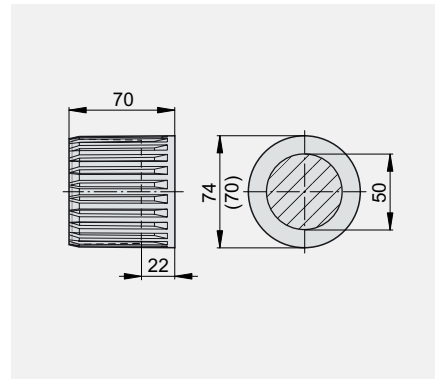
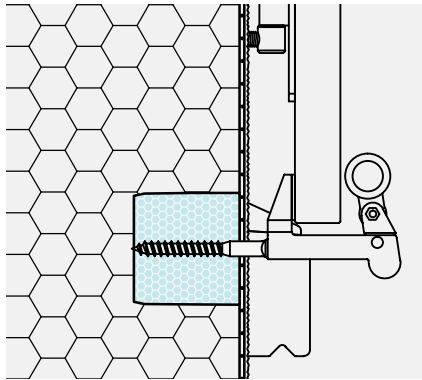


Standard element K3-EPS for 3 clamps  
and retention element

---

## Retention element for windows and doors

Fastening with installation cylinder

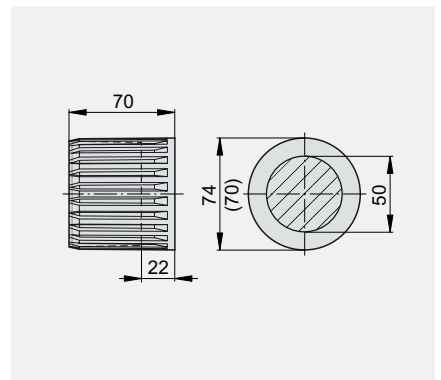
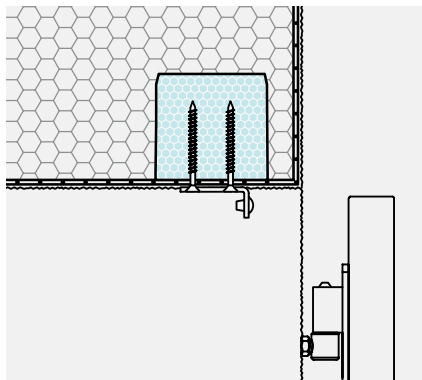


Standard element ZyRillo-EPS Ø 70 mm

---

## Tope

Fastening with installation cylinder



Standard element ZyRillo-EPS Ø 70 mm

## BASIC BUILDING PROCESS



### Griesser / Partner

Griesser / Partner advises architects and customers about wing shutters.



Order planning with Griesser / partner



Selection of installation elements by partner according page 4/5

Order installation elements through partner with Dosteba or Griesser



Installation installation element by partner

Griesser / Partner performs measuring for wing shutters.

Griesser / Partner installs wing shutters.

### Planner / insulator

Select installation elements by planner or insulator according to page 4/5 (Support by Dosteba).

Order installation elements through insulation installer with Dosteba (with Dosteba assistance).

Install installation elements by insulator.

---

## WING SHUTTERS FROM GRIESSER

---

Order form for installation elements Dosteba

---

### Support angle

- \_\_\_\_\_ Piece K1-PE (EU), T max. 200 mm
- \_\_\_\_\_ Piece TRA-WIK-ALU-RF, T max. 300 mm
- \_\_\_\_\_ Piece K1-EPS, D<sub>F</sub> max. 300 mm
- \_\_\_\_\_ Insulation thickness T \_\_\_\_\_ mm

Fastening material for installation on:

- \_\_\_\_\_ Brick
- \_\_\_\_\_ Concrete
- \_\_\_\_\_ without (building side)

- \_\_\_\_\_ Piece ZyRillo - EPS Ø 70 mm

- Ms.                       Mr.

---

Company

---

Address

---

Shipping address

---

Desired delivery date

---





**Your partner:**

Griesser solar shading – Quality since 1882.  
[www.griessergroup.com](http://www.griessergroup.com)

