

Vento sliding shutters.

Stylish and wind-resistant.
Solar shading deluxe.

NEW



Wind pressure-tested.

Wind-resistant solar shading up to 3000 pascals.



Facade highlight.

Stylish accents for any balcony, loggia or pergola.



Eurocode-compliant.

Time-saving reliable planning, even for over 50 cm from the facade.

 **GRIESSER**

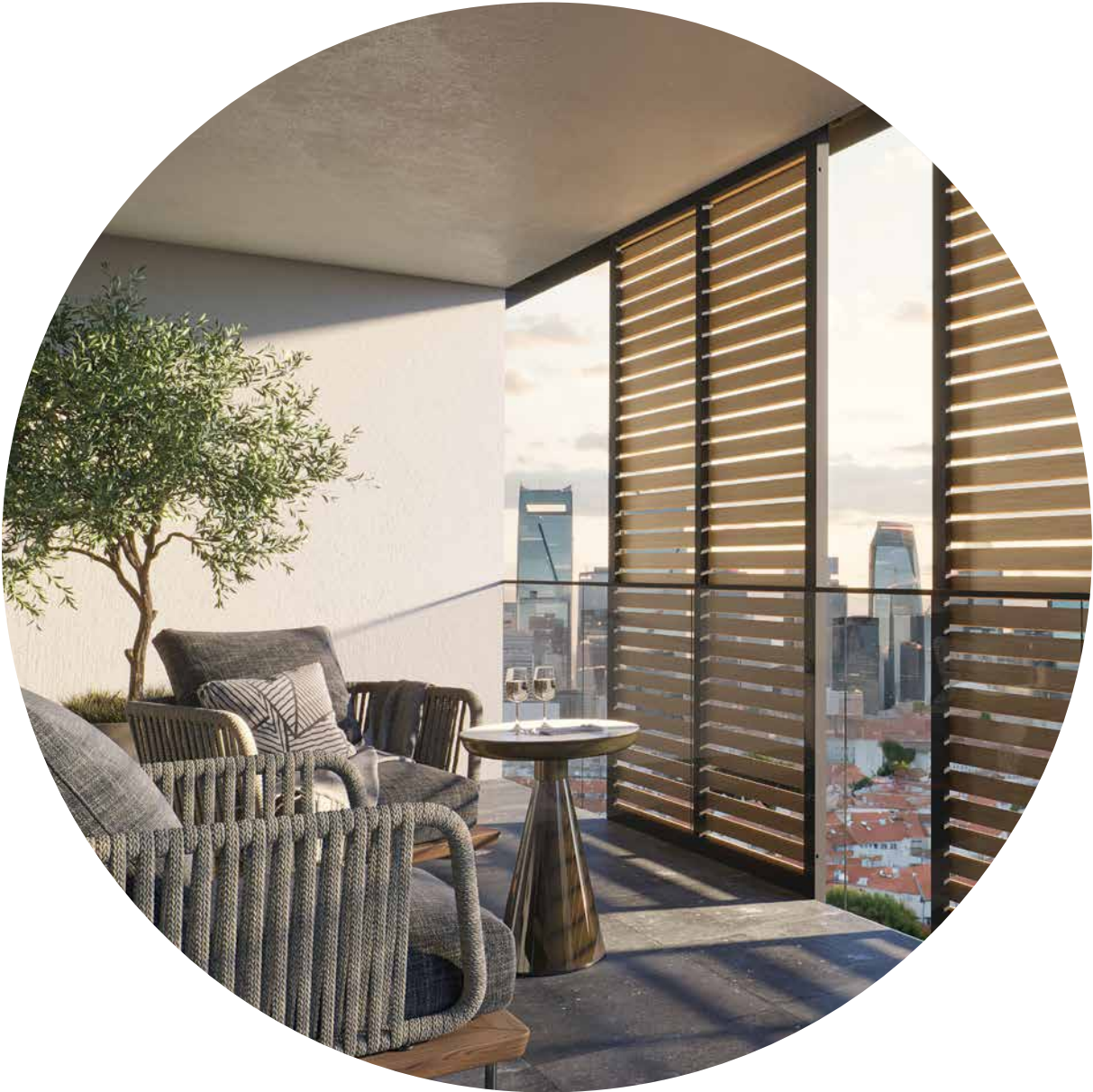


Griesser's Vento sliding shutters are an architectural highlight that gives any loggia, pergola or balcony a distinctly elegant touch. In its harmonious interplay with sunlight and its perfect wind and weather protection, this EN-norm-compliant solar shading solution brings even greater comfort to any living area.

*The system's structural credentials have been verified to EN 1090 and EN 1990, 1991, 1995, 1999 (Eurocodes 0, 1, 5 and 9), and its CE compliance has been confirmed in accordance with EN 13659.



For life lived outside:
**Design diversity, comfort and quality
for those outstanding outdoor moments.**



Put your trust in Griesser's expertise and experience for your sliding shutter needs. The Eurocode-compliant Vento solar shading system offers optimum comfort and reliable strength even under high wind pressures. So you can relax with all the privacy you need in your outdoor areas, too.

Sliding shutters are a stylish architectural means of setting distinctive accents on a building's facade to bring out all its individual character. Griesser's Vento sliding shutters are particularly adept at doing so, with their large-format individual design that delivers a pleasant lighting environment all year round.

You'd like to enjoy your privacy in your outdoor areas, too, along with protection from the sun and the weather whenever it may be needed? With Griesser's high-quality made-to-measure Vento sliding shutters, you can expand your living space while maintaining full control of the sunshine's intensity. You can determine – manually or automatically – how to use your solar shading. In winter, you can let the sunlight into your rooms and make full use of this natural heat source; and in summer you can avoid overheating and use the shade to maintain a pleasant room climate. In occasionally stormy times, too, you'll find that Vento is the best possible choice. Vento's sliding shutters have been tested to withstand wind pressures of over 3000 pascals, with their performance limits clearly established according to their dimensions. So you'll stay optimally protected, even in strong wind conditions.

You're sure to find just the right sliding shutters for your building in our extensive Vento range. So you can feel safe, secure and comfortable under your loggia or pergola or on your balcony.



A symbiosis of aesthetics and privacy.

Our large-format Vento sliding shutters put distinctive accents on your building's design while simultaneously providing all the privacy you desire.



Models as individual as you are.

With Griesser you can choose from our wide range of colors and filling options to tailor your solar shading precisely to your tastes and find the very best solution for your particular needs.



Particularly wind- and weather-resistant.

Vento sliding shutters are tested to the highest wind category. So they'll provide reliable protection against not just the sun but even turbulent weather, too – all to help you feel safe and secure.



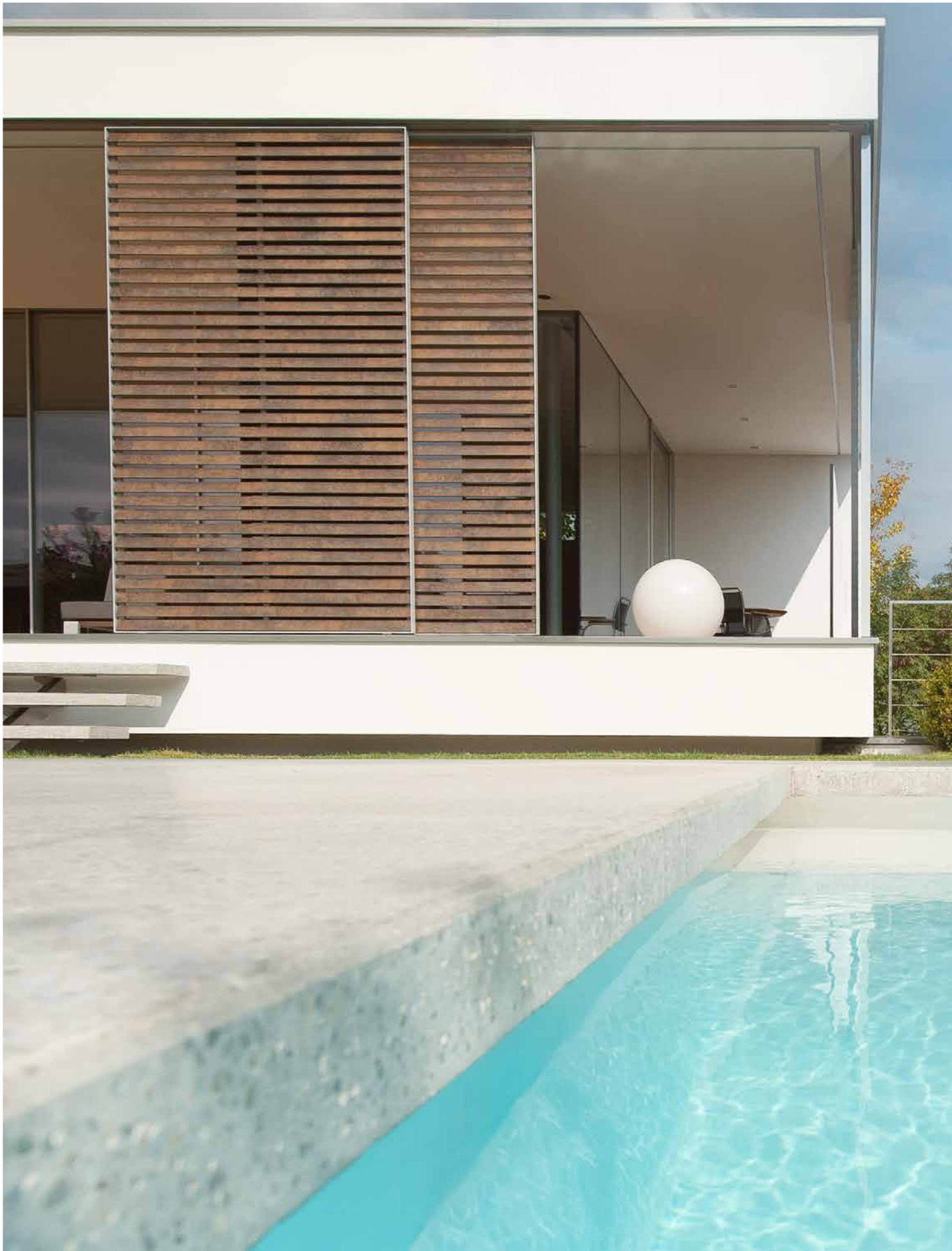
Long-lasting, easy-care.

With their corrosion-resistant coating, Vento sliding shutters are especially durable, too. And whatever the weather may subject them to, they're virtually maintenance-free.



Sustainable – for the environment's sake.

To minimize environmental strain, up to a third of the aluminum used in the profiles of Griesser's Vento sliding shutters is from recycled sources.





Vento sliding shutters.

With its Vento sliding shutters Griesser sets further new benchmarks in solar shading technology. In Vento Griesser has developed a sliding shutter that is particularly suited to exposed settings such as a loggia or a balcony. Vento sliding shutters are available up to 3.5 meters in height. We'll work with you to design the best sliding shutters for your particular needs – an ideal blend of architectural style, aesthetic appeal, functionality and technical sophistication that brings life and living to your building's facade.



Statically calculated sliding shutters for more than 50 cm distance from the building facade*.



Daylight control



Lateral darkening



Wind resistance

- Wind pressure determined in accordance with EN 1991-1-4 based on building data and location* for Germany, Austria, Switzerland, France, Italy and Spain**
- Over 20 000 successfully tested deployment cycles and wind pressure tests up to more than 3000 pascals (depending on individual dimensions)
- Proven protection from the sun and overheating in summer
- Lets in warming solar rays in winter
- Reliable privacy protection
- Made to measure for perfect building installation
- Choice of manual or automatic controls, with motorized option also integrable into SmartHome solutions
- Extensive range of models and individual options to bring life and vibrancy to any building facade

* All static data subject to acceptance by the project's structural engineer.

** Further countries on request.

Wind pressures accommodated. Only with Griesser.

Vento sliding shutters are a unique solar shading product that has been specially developed to withstand the challenge of wind pressures.

All Griesser sliding shutters are laboratory-tested to withstand the highest wind classes in accordance with the EN 13659 norm. Its Vento sliding shutters are subjected to additional testing in wind pressures of up to 3000 pascals.

The farther away a solar shading product is from the facade of the building, the greater the wind loads exerted on it will be. If this distance is more than 50 cm, the sliding shutter can no longer be viewed as solar shading in front of a window, but must be viewed and dimensioned as an element of the facade. The corresponding procedures are specified in EN norms EN 1090 and EN 1990, 1991, 1995 and 1999 (Eurocodes 0, 1, 5 and 9).

With its Vento sliding shutters, Griesser offers a solution that doesn't just withstand high wind pressures but also complies with all the relevant norms. To make the corresponding processes simpler and more efficient, we will – at the customer's request – determine their local wind pressures based on Eurocode 1 (for six countries). In doing so, we'll pay due and full regard to the relevant building data – length, width, height, shape – and its location – site, wind zone, terrain and elevation. We'll also incorporate the specific place on the building where the sliding shutters should go: regular facade, loggia, balcony, corner, corner loggia, roof edge or similar.

With our full type statics and all our calculations, we'll provide a sound foundation for the structural engineer to expedite the acceptance process, facilitating the engineer's work and accelerating your project's completion.





Reinforced profile

To stiffen the frame, to minimize distortion and increase load tolerances.

Slat profile

The Model H sliding shutter offers a choice of aluminum or pinewood slats. The slats are connected to the frame using an invisible clip and screw system to bring sleek elegance to any loggia, pergola or balcony.

Frame profile

The reinforced frame construction provides additional stability, and can be coated in any color. When combined with the wooden slat option, the frame can offer an appealing contrast, too.

G Vento guide rail

This specially developed guide rail with its higher bars ensures that the sliding shutter remains safely in the rail even if it is severely distorted through strong wind pressures.



All Vento sliding shutter models have been structurally verified through tests that include exposure to wind pressures of more than 3000 pascals. Their performance limits have also been determined for various shutter sizes. So Griesser can readily attest to the strength and the reliability of its Vento sliding shutters in any application.

Models and installations.

A range of combinations.



H Wood 60



H Aluminum 60

Maximum per element,
depending on situation:

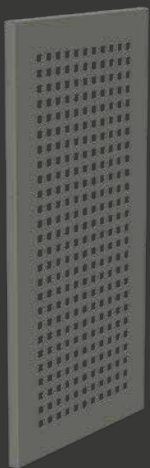
✕ 5,6 m²

┌ 1600 mm

┆ 3500 mm



S



S-L



A



With their ceiling, floor, facade or bracket installation, Vento sliding shutters will meet the needs of almost any loggia, pergola, balcony or terrace. So they'll fit ideally into any facade – as multi-track systems, too.



Ceiling installation above

With ceiling installation the guide rail will be affixed directly to the ceiling or the window lintel. No additional mounting or adapter materials are required. For multi-track applications, the shutters will be installed behind one another, to provide a larger visual area.

S2 floor installation below

Easy installation via a (Type L or G Vento) guide rail affixed to the floor or the window ledge. For multi-track applications, the shutters will be installed behind one another, to provide a larger visual area.

Bracket installation above

With bracket installation the guide rail is affixed to suspension brackets attached to the facade. So the sliding shutters will move in front of the facade. Thanks to Griesser's innovative mounting system, the panels can be adjusted in any direction, which substantially facilitates on-site installation.

S4 wall installation below

With suspension brackets attached to the facade, one- to three-track sliding shutter systems can be installed with ease.

Control expertise.

Live and work sustainably better with Griesser's innovative Vento sliding shutters and smart control solutions.



Compatible with a wide range of control systems.

Automatically controlled solar shading – your benefits in brief:

Protective comfort.

Griesser's smart solar shading means greater privacy, safety and security for your home. Its sight protection keeps prying eyes away and potential intruders deterred. And its remote management systems give you total and constant control of all your indoor living areas. So you can activate your solar shading even when you're away, giving you a reassuring sense of seclusion, safety and security.

Thermal comfort.

Griesser's smart solar shading creates an optimum indoor climate and saves energy, too. The systems respond automatically to light and temperature conditions to maintain a constant and comfortable indoor climate. That's easier on the environment, and it cuts energy costs. Constant temperatures help maintain a healthy indoor ambience, too. Comfort, health and sustainability all in one.

Visual comfort.

By automatically adjusting the opening width of your Vento sliding shutters, you can achieve an ideal balance of brightness and protection from direct solar radiation. So you have the flexibility to cope with various lighting conditions, along with an optimum sense of comfort and well-being.



Feeling good and healthy.

Daylight is essential to our health and well-being. Griesser SmartHome provides intelligent protection from overheating while ensuring that your living space receives adequate daylight, too.



Feeling safe and secure.

Even when you're not at home, Griesser SmartHome can make your house look occupied, with solar shading systems that can be time-controlled or vacation-programmed. The system can be extended to motion sensors, too.



Undisturbed privacy.

Griesser SmartHome's automatically controlled solar shading protects you from undesired visual intrusion to make your home a genuine feelgood oasis.



Live more sustainably and save energy.



Visual comfort.

Visual privacy, glare protection and daylight regulation.



Thermal comfort.

An ideal indoor climate and high energy efficiency.



Protective comfort.

For greater privacy and seclusion.



The Griesser color world.

See – feel – experience.

The colors of your Vento sliding shutters shouldn't just give you pleasure for many years to come. They should help accentuate your building's character, too, and create an ambience to suit your personal living world. With its advanced powder coatings, Griesser maintains the highest product quality standards while offering you a vast range of color options.



Substantially less corrosion-prone and water-repellent surfaces in countless color options and a wide range of textures.

A world of colors.

Bring color into your life and create your own personal feelgood ambience with Vento sliding shutters. Choose from 150 standard colors including 10 wood decor options, or opt for a non-standard color that's the perfect match for you and your facade. Our specialists will be pleased to assist and advise you on your creative journey.

Three innovative surface structures.

Thanks to our special coating techniques, we can offer a choice of three surface structures:

- Semi-gloss, for a gentle sheen.
- Fine structure matte, for more robustness and stability.
- Weather-resistant matte, for maximum colorfastness and outstanding resistance to dirt.



Never paint your window shutters again.

The many colors that are available for aluminum window shutters are an invitation to individuality. Coating them after assembly ensures greater durability, with no bare edges and no extra care or repainting for you. With their high resistance to environmental influences, these products are very long-lasting. And aluminum is 100% recyclable, too.

Naturally sustainable.

At Griesser.

We aim to set benchmarks, today and tomorrow, with innovative solutions that are in full accord with our sustainable business practices.



Up to 30% of aluminum from recycled sources.

We take sustainability seriously in our profiles, too, where up to 30% of the aluminum we use is from recycled sources.



Hybrid powder coating.

Griesser puts a keen emphasis on sustainable production. And we are constantly further improving the development of our solar shading products throughout the process chain. We re-treat waste water, recover powder and use a photovoltaic facility. Our hybrid powder coating plant runs on our own green energy. At times of high energy need, we also draw on external electricity sources; and at times of low need we put our excess energy back into the grid. We use heat pumps to lower our energy consumption, in our pre-treatment and our premises cooling processes. And all our waste heat, including that from our compressed air and our coating facility, is fed back into the system, enabling us to achieve energy savings of up to 15%.



EPD and FDES certificates.

We have been awarded the EPD and FDES certifications by independent institutions for our sliding shutter systems.

Inspired by the **Sun.**

griesser.com

