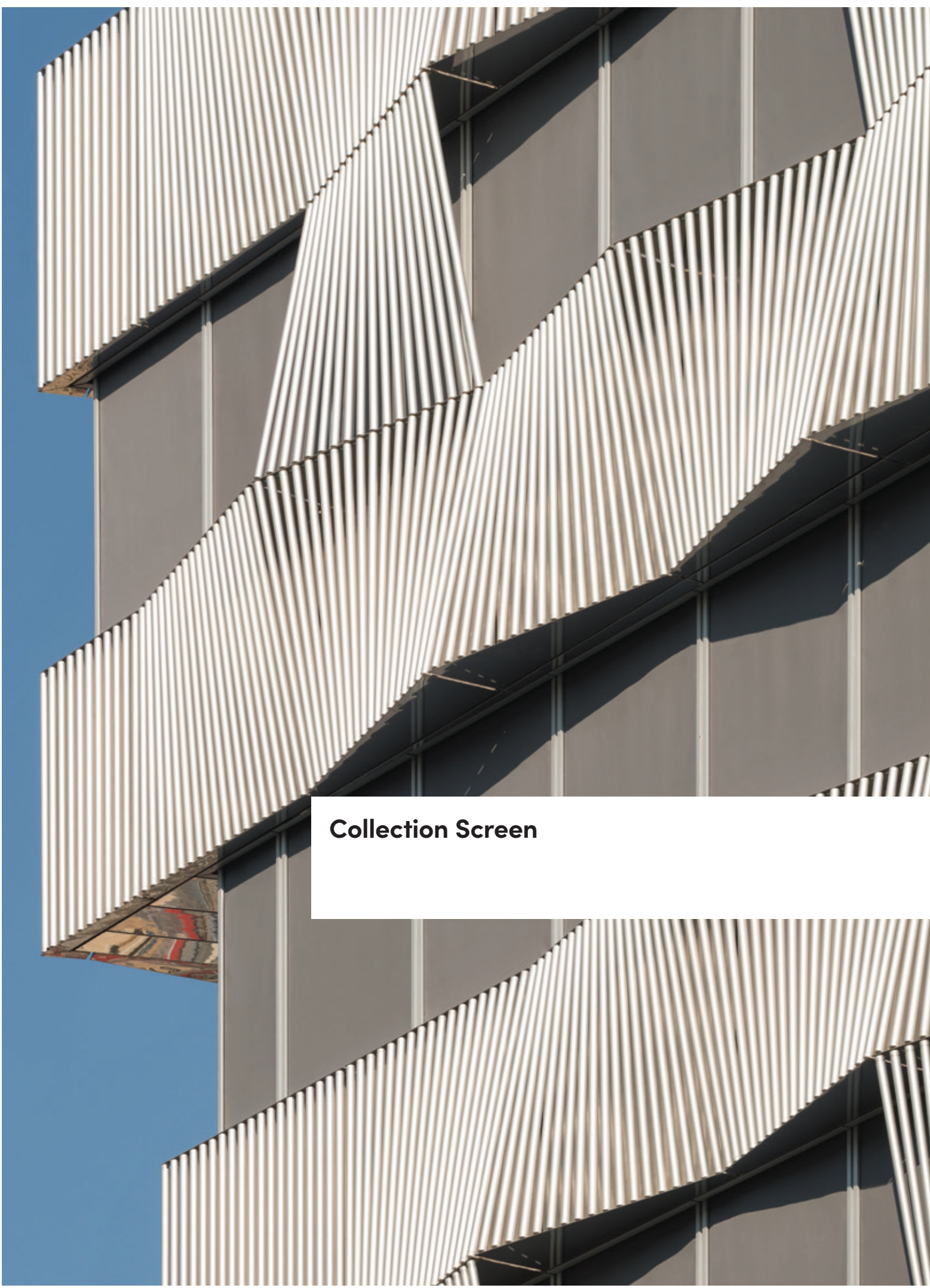


 **GRIESSER**

Collection Screen.
The automatic choice.





Collection Screen

fabric Collection Screen

MONTANA



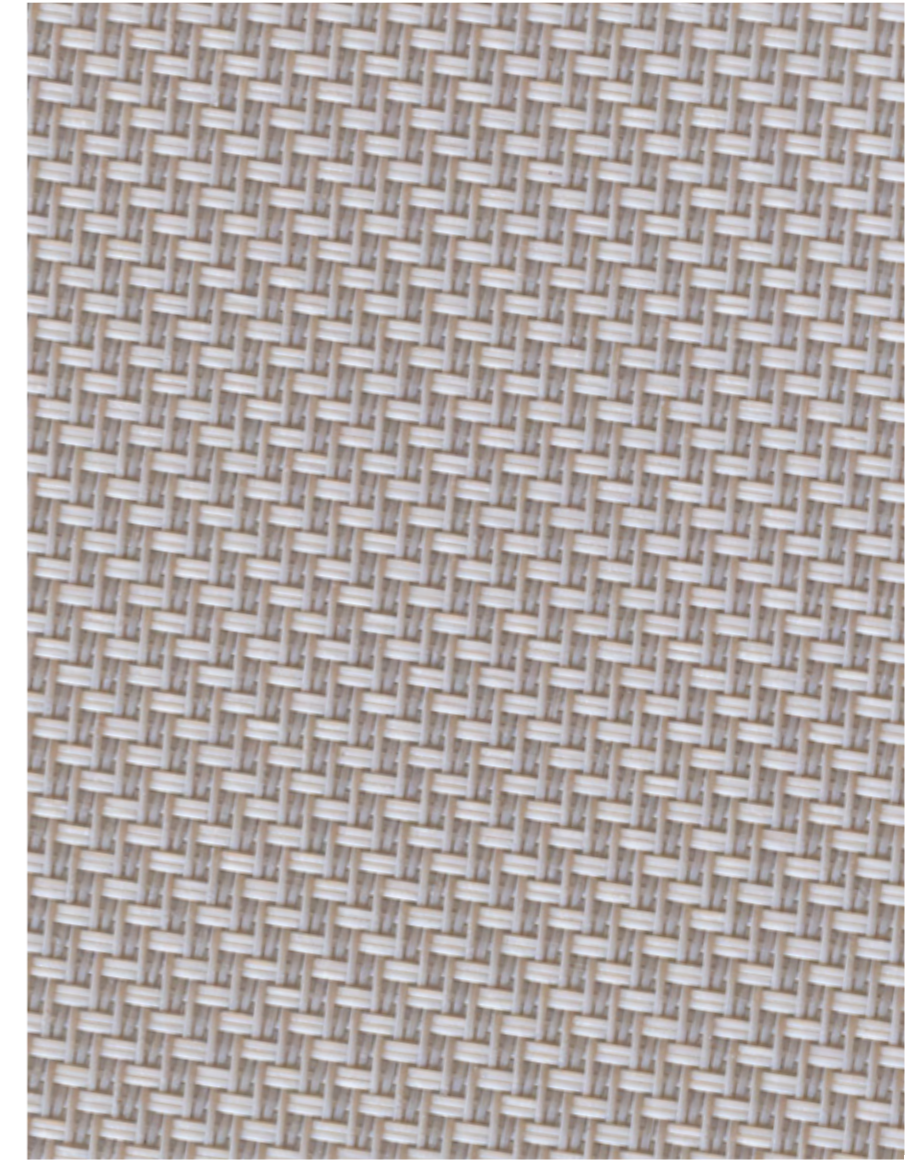
ETNA



SAHARA



BORA BORA



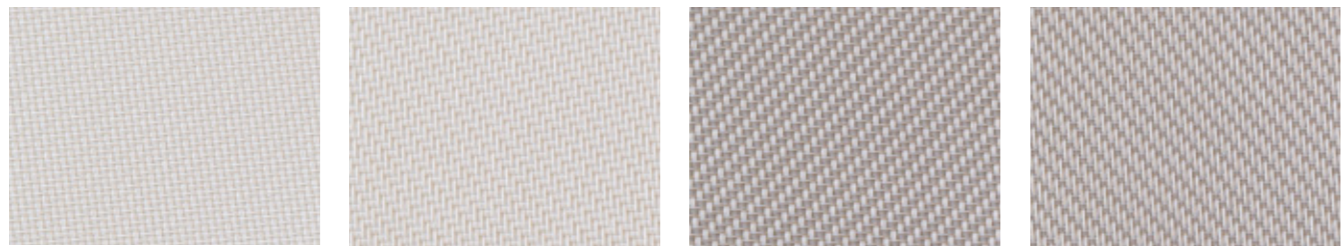
Screen - 52102 White / Pearl

FABRIC RECOMMENDATIONS FOR FUNCTIONAL BUILDINGS

In the interest of thermal protection, the g-value must be $\leq 10\%$.
To ensure adequate protection from glare, transparency must be $\leq 5\%$.
Light transmittance must be $\geq 5\%$ to provide optimal utilisation of daylight.
To obtain the best possible thermal protection, a fabric with the the lowest thermal transmittance (T_e) possible should be chosen, and the colour should be rather dark.



Screen: Montana

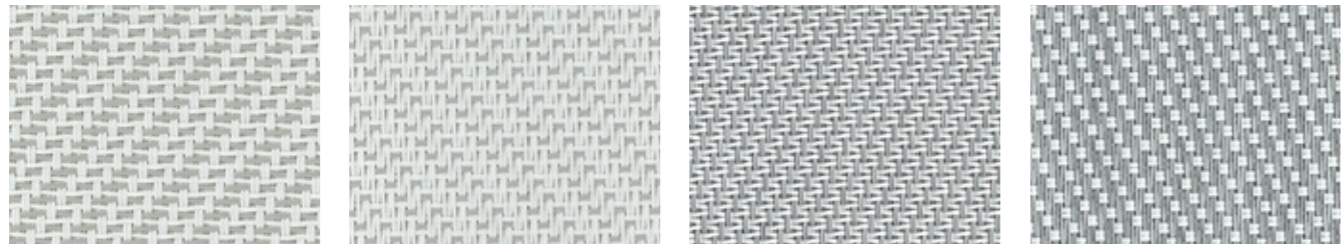


52101 White / White

(A)

52102 White / Perle

(B)



(A)

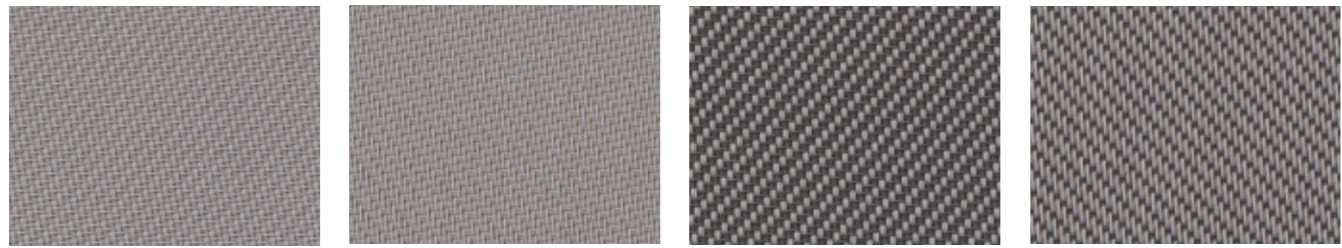
M36 020207 Blanc Blanc Perle

(B)

(A)

0702 Perle Blanc

(B)

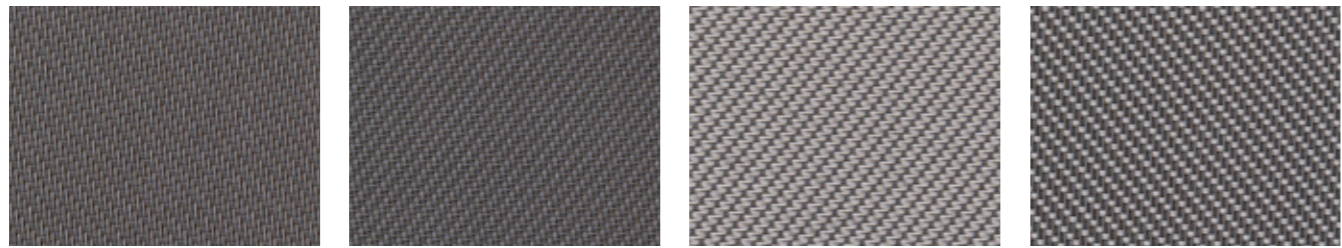


520103 Pearl / Pearl

(A)

52104 Pearl / Grey

(B)

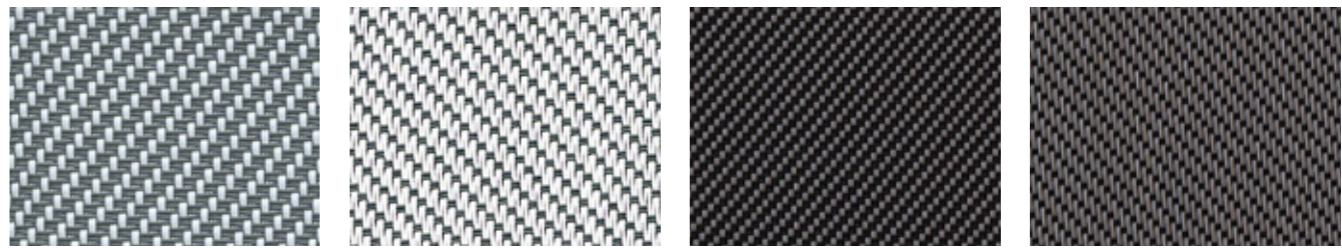


52105 Grey / Grey

(A)

52142 White / Grey

(B)



(A)

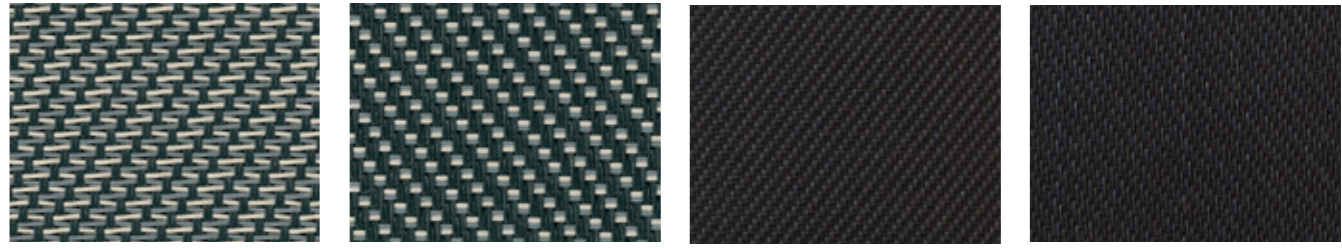
0201 Blanc Gris

(B)

(A)

52106 Grey / Charcoal

(B)

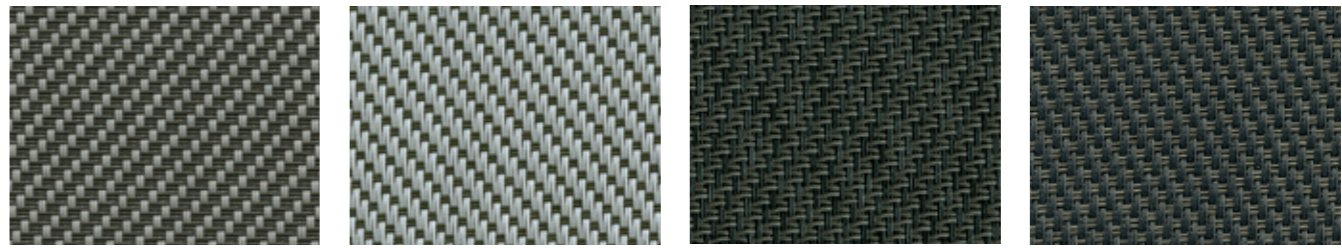


(A)

M38 300120 Charcoal Gris Lin

(B)

52107 Charcoal / Charcoal



(A)

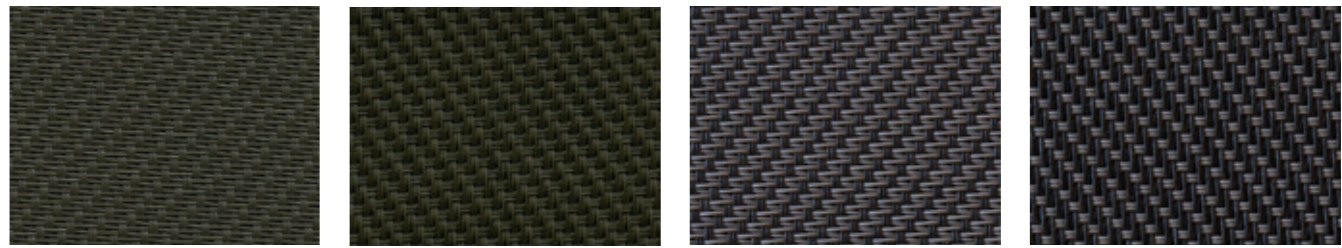
0706 Perle Bronze

(B)

(A)

3006 Charcoal Bronze

(B)



0606 Bronze

(A)

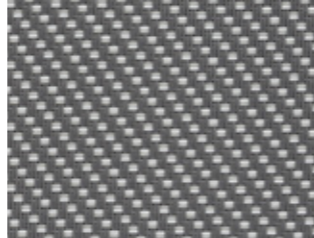
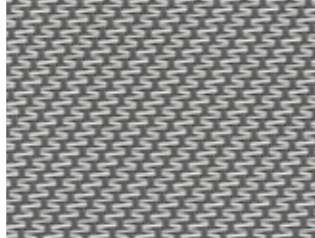
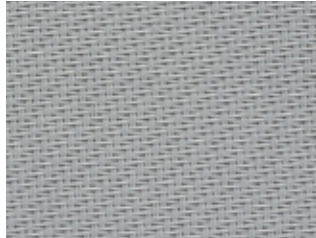
52108 Charcoal / Grey

(B)

All samples are produced with standard print colors and may therefore deviate from the original color shades.



Screen: Montana



(A)

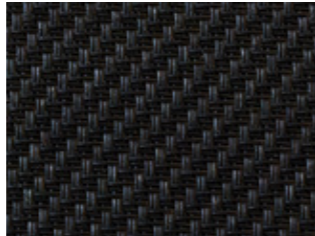
4949 RAL 9006

(B)

(A)

M31 010207 Gris Blanc Perle

(B)



(A)

52144 Anthracite Grey

(B)

(A)

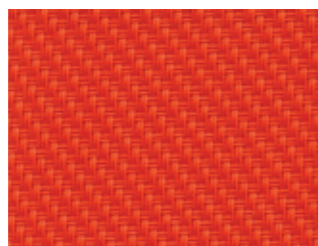
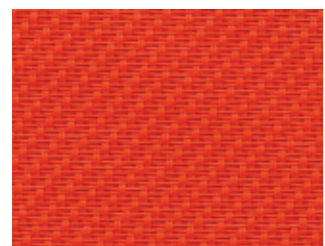
52143 Deep Black

(B)

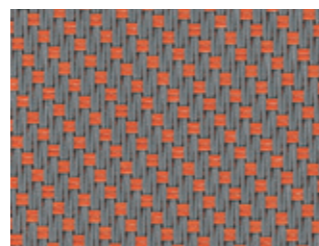
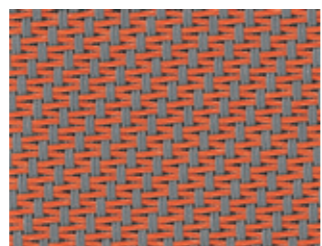




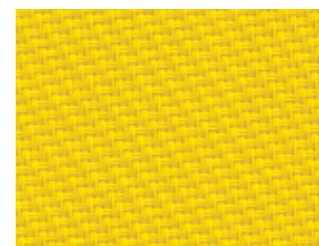
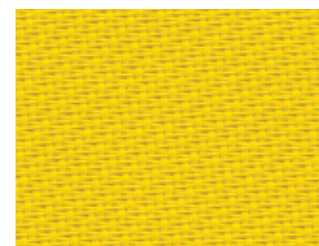
Screen: Etna



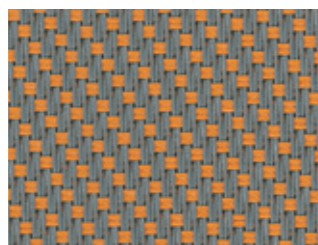
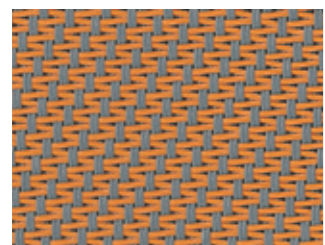
0909 Mandarine



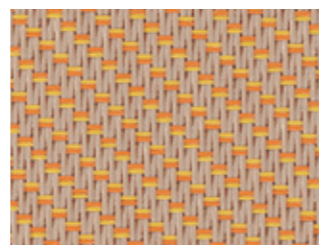
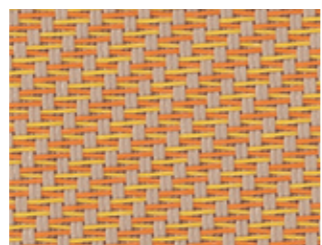
(A) 0109 Gris Mandarine (B)



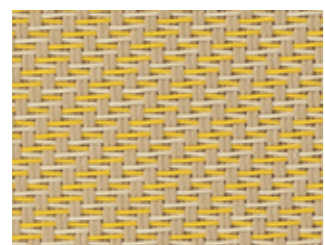
0505 Canari



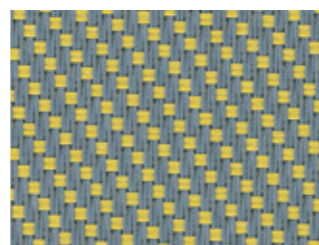
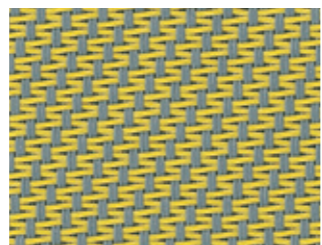
(A) 0108 Gris Or (B)



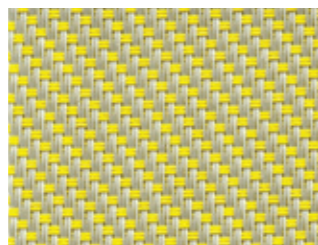
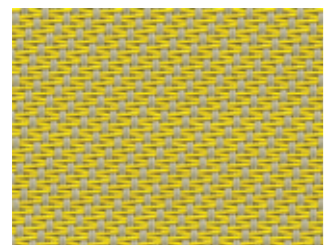
(A) M65 100508 Sable Canari Or (B)



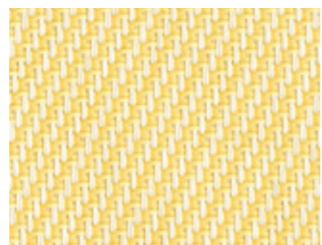
(A) M64 100520 Sable Canari Lin (B)



(A) 0105 Gris Canari (B)

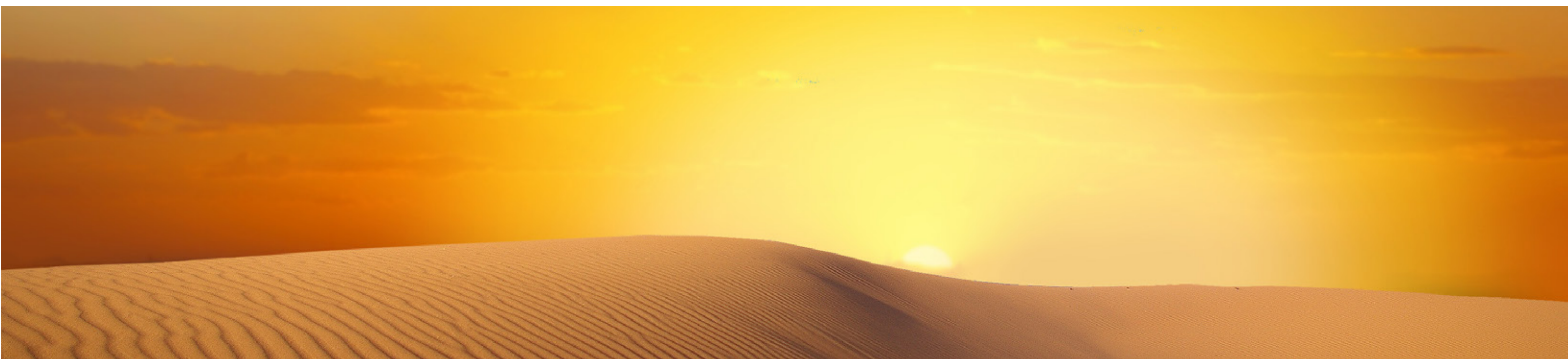


(A) 0705 Perle Canari (B)

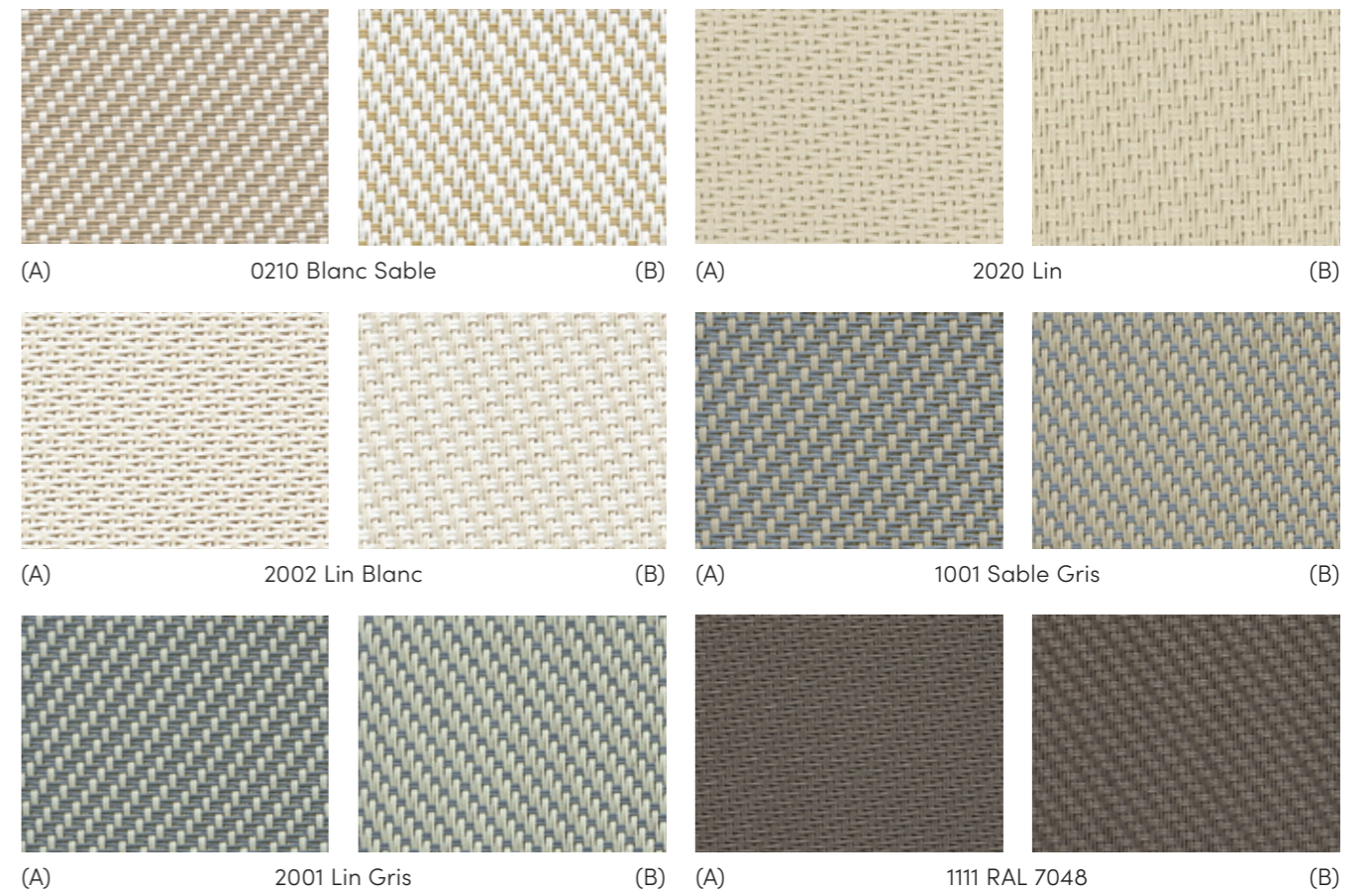
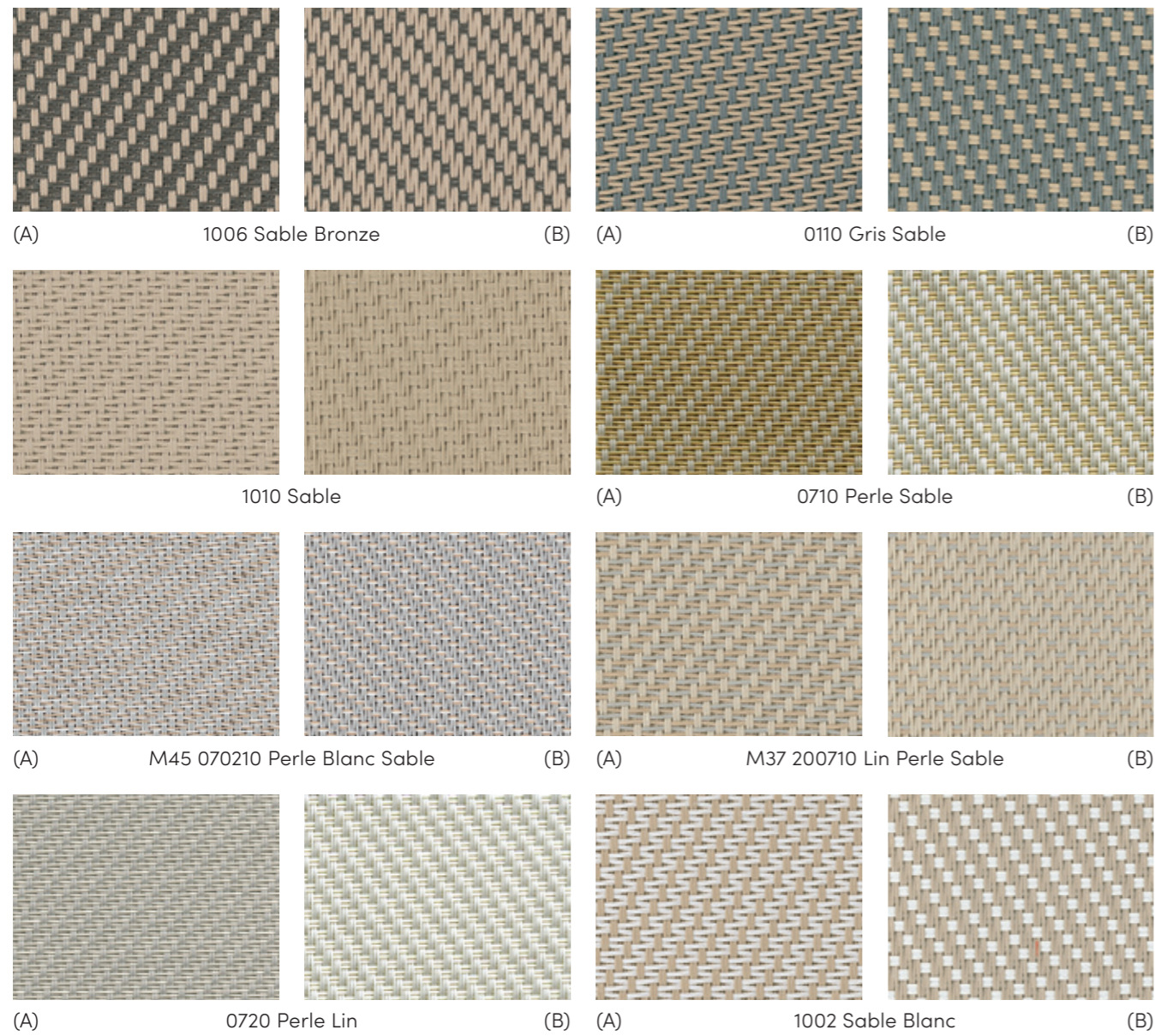


(A) 0205 Blanc Canari (B)

All samples are produced with standard print colors and may therefore deviate from the original color shades.



Screen: Sahara



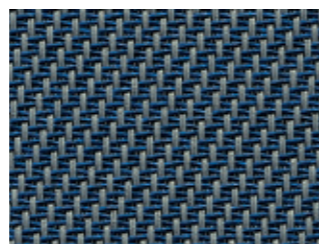
All samples are produced with standard print colors and may therefore deviate from the original color shades.



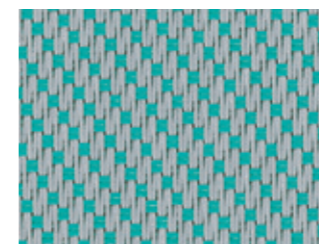
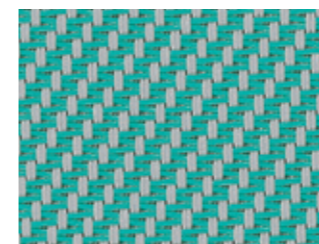
Screen: Bora Bora



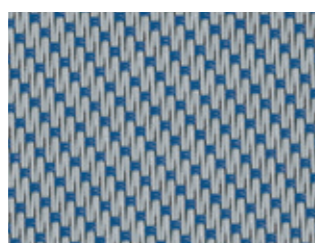
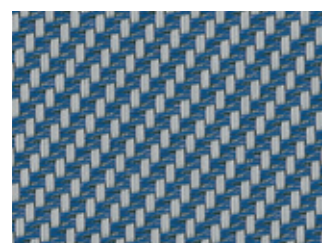
4040 Outremer



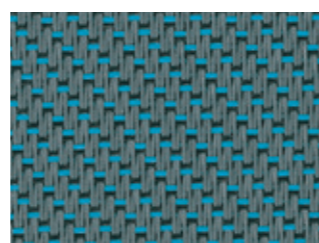
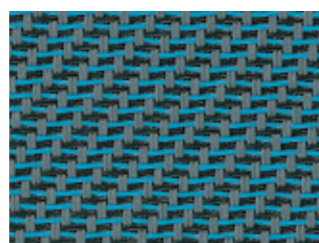
(A) 0140 Gris Outremer (B)



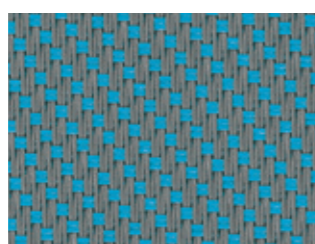
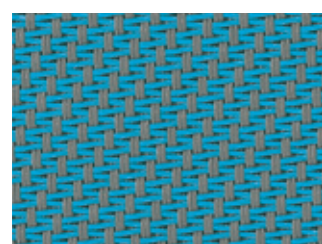
(A) 0750 Perle Vert (B)



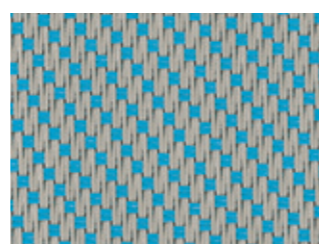
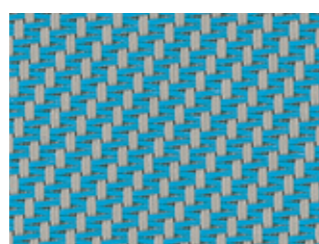
(A) 0740 Perle Outremer (B)



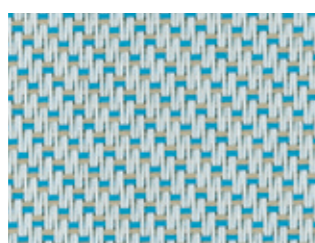
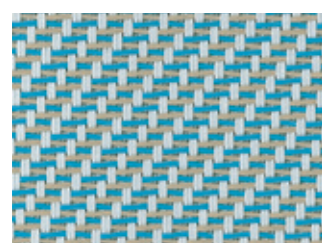
(A) M01 010330 Gris Turquoise Charcoal (B)



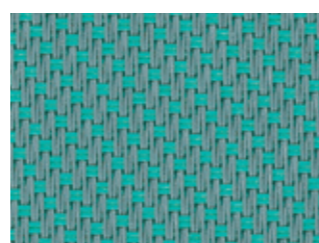
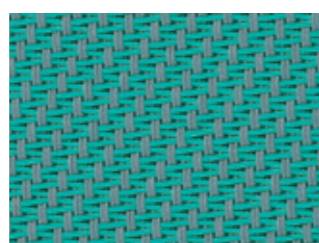
(A) 0103 Gris Turquoise (B)



(A) 0703 Perle Turquoise (B)



(A) M02 020310 Blanc Turquoise Sable (B)

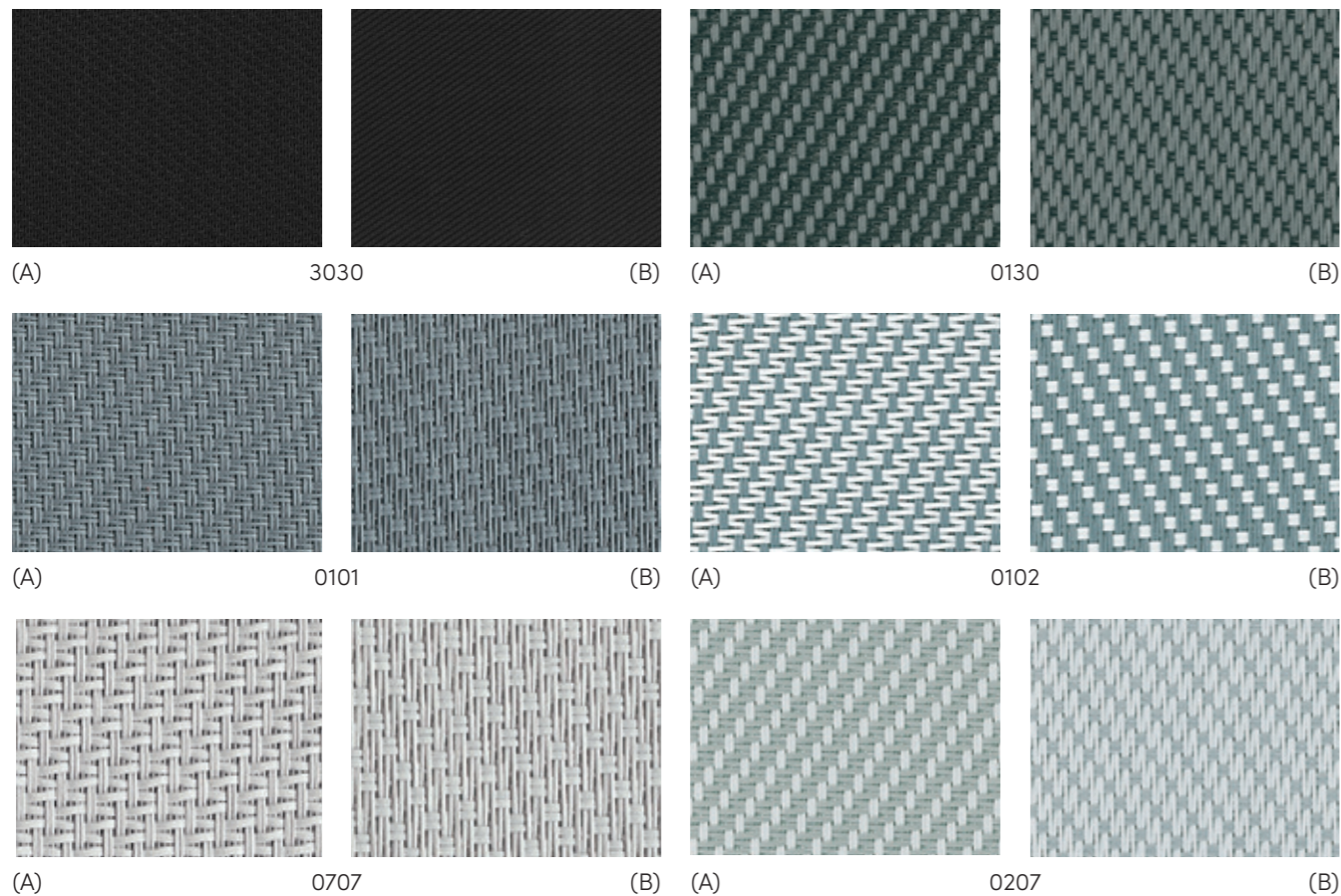


(A) 0150 Gris Vert (B)

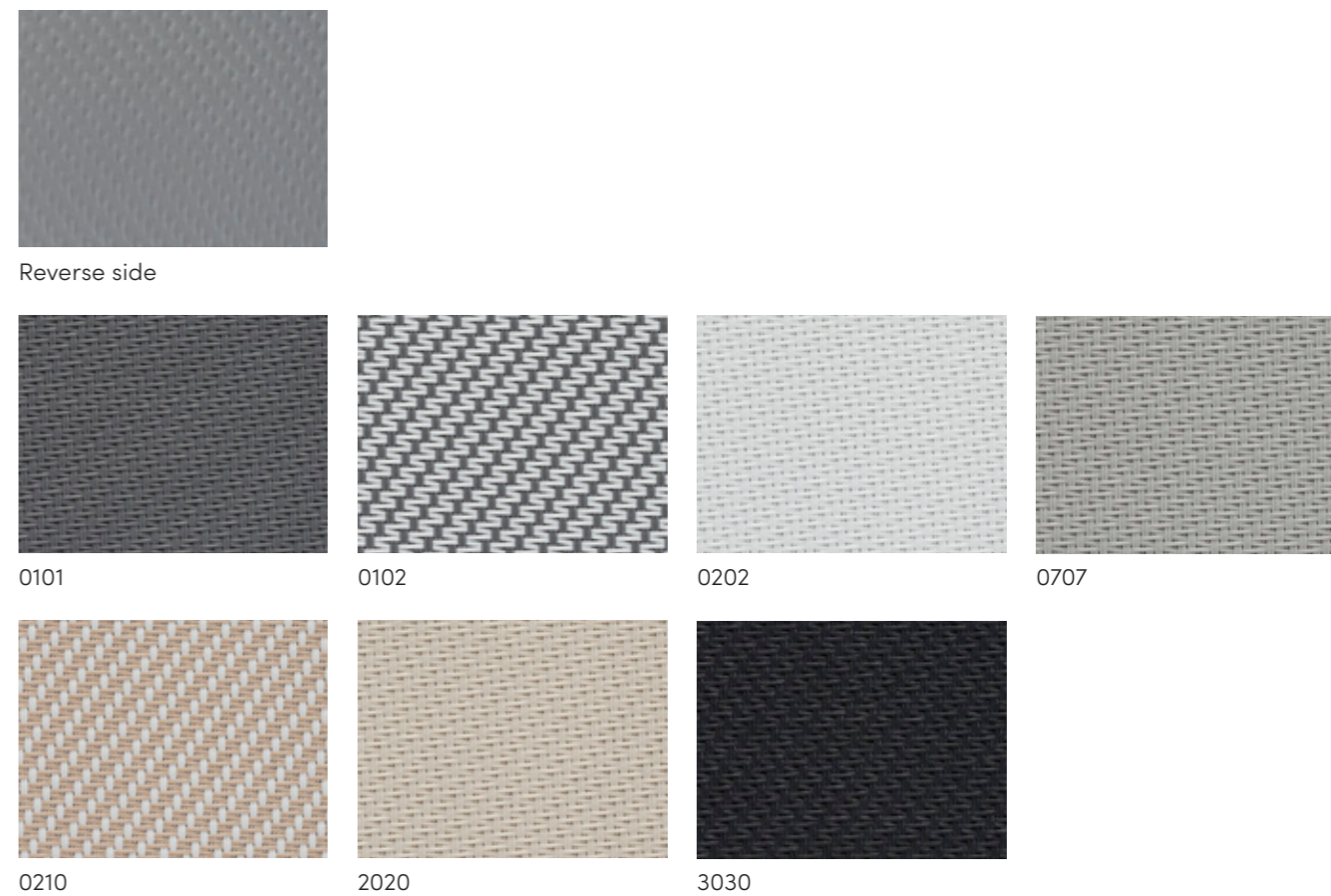
All samples are produced with standard print colors and may therefore deviate from the original color shades.



Satiné 5501



Satiné 21154*



All samples are produced with standard print colors and may therefore deviate from the original color shades.

*Canvas only available in the EU area.

All samples are produced with standard print colors and may therefore deviate from the original color shades.

** Satiné 5500

Fire resistance M1 B1 C-s3 d0 **Weight/m²** 0,52kg **Size** 0,75mm

* Soltis 7635

Fire resistance M1 B1 C-s3 d0 **Weight/m²** 0,52kg **Size** 0,73mm

Montana

		T _e	R _e	A _e	T _v	g-tot _e
*52101 White / White		0.25	0.63	0.12	0.25	0.10
*52102 White / Pearl	A	0.19	0.53	0.28	0.17	0.07
	B	0.19	0.48	0.33	0.17	0.07
**M36 020207 Blanc Blanc Perle	A	0.19	0.57	0.24	0.18	0.08
	B	0.19	0.60	0.21	0.18	0.08
**0702 Perle Blanc	A	0.17	0.50	0.33	0.16	0.08
	B	0.17	0.45	0.38	0.16	0.08
*52103 Pearl / Pearl		0.16	0.38	0.46	0.13	0.06
*52104 Pearl / Grey	A	0.11	0.29	0.60	0.10	0.05
	B	0.11	0.24	0.65	0.10	0.05
*52105 Grey / Grey		0.07	0.16	0.77	0.63	0.04
*52142 Grey / White	A	0.11	0.26	0.63	0.99	0.05
	B	0.11	0.35	0.54	0.99	0.05
**0201 Blanc Gris	A	0.12	0.37	0.51	0.10	0.06
	B	0.11	0.48	0.41	0.09	0.05
*52106 Charcoal / Charcoal	A	0.06	0.12	0.82	0.59	0.04
	B	0.06	0.09	0.85	0.59	0.04

		T _e	R _e	A _e	T _v	g-tot _e
**M38 300120 Charcoal Gris Lin	A	0.06	0.19	0.75	0.05	0.05
	B	0.06	0.13	0.81	0.06	0.05
*52107 Charcoal / Charcoal		0.06	0.06	0.88	0.63	0.04
**0706 Perle Bronze	A	0.08	0.18	0.74	0.08	0.05
	B	0.08	0.25	0.67	0.07	0.05
**3006 Charcoal Bronze	A	0.04	0.07	0.89	0.04	0.04
	B	0.04	0.07	0.89	0.04	0.04
**0606 Bronze		0.05	0.07	0.88	0.05	0.05
*52108 Charcoal / Grey	A	0.06	0.10	0.84	0.64	0.04
	B	0.06	0.13	0.81	0.64	0.04
**4949 RAL 9006	A	0.11	0.37	0.52	0.10	0.05
	B	0.11	0.37	0.52	0.08	0.04
**M31 010207 Gris Blanc Perle	A	0.10	0.34	0.56	0.08	0.06
	B	0.10	0.28	0.62	0.04	0.04
*52144 Anthracite Grey		0.05	0.06	0.89	0.53	0.04
*52143 Deep Black		0.04	0.05	0.91	0.49	0.04

Etna

		T _e	R _e	A _e	T _v	g-tot _e
0909 Mandarine		0.18	0.44	0.38	0.07	0.07
0109 Gris Mandarine	A	0.09	0.30	0.61	0.05	0.05
	B	0.09	0.26	0.65	0.05	0.05
0108 Gris Or	A	0.10	0.32	0.58	0.07	0.05
	B	0.11	0.26	0.63	0.07	0.06
M65 100508 Sable Canari Or	A	0.15	0.43	0.42	0.11	0.07
	B	0.15	0.42	0.43	0.11	0.07
M64 100520 Sable Canari Lin	A	0.16	0.45	0.39	0.12	0.07
	B	0.16	0.43	0.41	0.12	0.07

		T _e	R _e	A _e	T _v	g-tot _e
0105 Gris Canari	A	0.10	0.33	0.57	0.07	0.04
	B	0.09	0.28	0.63	0.07	0.05
0705 Perle Canari	A	0.16	0.42	0.42	0.15	0.07
	B	0.16	0.40	0.44	0.15	0.08
0205 Blanc Canari	A	0.19	0.58	0.23	0.18	0.08
	B	0.19	0.61	0.20	0.17	0.07
0505 Canari		0.20	0.51	0.29	0.17	0.08

Bora Bora

		T _e	R _e	A _e	T _v	g-tot _e
4040 Outremer		0.14	0.25	0.61	0.05	0.05
0140 Gris Outremer	A	0.08	0.22	0.70	0.05	0.05
	B	0.08	0.21	0.71	0.05	0.05
0740 Perle Outremer	A	0.13	0.28	0.59	0.08	0.06
	B	0.13	0.31	0.56	0.07	0.06
M01 010330 Gris Turq. Charcoal	A	0.08	0.20	0.72	0.06	0.05
	B	0.08	0.20	0.72	0.06	0.05
0103 Gris Turquoise	A	0.09	0.30	0.61	0.06	0.05
	B	0.09	0.26	0.65	0.06	0.05

		T _e	R _e	A _e	T _v	g-tot _e
0703 Perle Turquoise	A	0.13	0.38	0.49	0.10	0.06
	B	0.14	0.38	0.48	0.09	0.06
M02 020310 Blanc Turq. Sable	A	0.17	0.49	0.34	0.13	0.08
	B	0.17	0.55	0.28	0.13	0.07
0150 Gris Vert	A	0.09	0.26	0.65	0.06	0.05
	B	0.09	0.23	0.68	0.06	0.05
0750 Perle Vert	A	0.14	0.33	0.53	0.11	0.06
	B	0.14	0.34	0.52	0.11	0.06

** Satiné 5500

Resistencia al fuego M1 B1 C-s3 d0 **Peso/m²** 0,52kg **Espesor** 0,75mm

Sahara

		T _e	R _e	A _e	T _v	g-tot _e
**1006 Sable Bronze	A	0.08	0.18	0.74	0.07	0.05
	B	0.08	0.26	0.66	0.07	0.05
**0110 Gris Sable	A	0.09	0.29	0.62	0.07	0.05
	B	0.10	0.25	0.65	0.07	0.05
**1010 Sable		0.13	0.39	0.48	0.10	0.06
**0710 Perle Sable	A	0.14	0.38	0.48	0.12	0.07
	B	0.14	0.37	0.49	0.12	0.07
**M45 070210 Perle Blanc Sable	A	0.15	0.43	0.42	0.14	0.07
	B	0.15	0.41	0.44	0.14	0.07
**M37 200710 Lin Perle Sable	A	0.16	0.45	0.39	0.14	0.07
	B	0.16	0.48	0.36	0.14	0.07
**0720 Perle Lin	A	0.17	0.41	0.42	0.15	0.08
	B	0.17	0.41	0.42	0.15	0.08

		T _e	R _e	A _e	T _v	g-tot _e
**1002 Sable Blanc	A	0.16	0.51	0.33	0.13	0.07
	B	0.16	0.46	0.38	0.13	0.07
**0210 Blanc Sable	A	0.17	0.50	0.33	0.15	0.08
	B	0.17	0.55	0.28	0.14	0.08
**2020 Lin		0.18	0.53	0.29	0.16	0.08
**2002 Lin Blanc	A	0.20	0.58	0.22	0.18	0.08
	B	0.20	0.56	0.24	0.18	0.09
**1001 Sable Gris	A	0.10	0.28	0.62	0.08	0.06
	B	0.10	0.33	0.57	0.08	0.05
**2001 Lin Gris	A	0.12	0.32	0.56	0.09	0.06
	B	0.11	0.40	0.49	0.09	0.05
**1111 RAL 7048		0.05	0.17	0.78	0.05	0.05

Satiné 5501

Fire resistance M1 B1 **Weight/m²** 0,45kg **Size** 0,55mm

	T _e	R _e	A _e	T _v	g-tot _e
0101	0.05	0.20	0.75	0.03	0.00
0102	0.06	0.32	0.62	0.03	0.10
0130	0.04	0.15	0.81	0.03	0.00

	T _e	R _e	A _e	T _v	g-tot _e
0207	0.15	0.59	0.26	0.13	0.10
0707	0.10	0.39	0.51	0.09	0.10
3030	0.02	0.06	0.92	0.02	0.00

Satiné 21154

Fire resistance M1 **Weight/m²** 0,66kg **Size** 0,75mm

	T _e	R _e	A _e	T _v	g-tot _e
0101	0.00	0.21	0.79	0.00	0.03
0102	0.00	0.42	0.58	0.00	0.02
0202	0.00	0.69	0.31	0.00	0.01
0210	0.00	0.53	0.47	0.00	0.02

	T _e	R _e	A _e	T _v	g-tot _e
0707	0.00	0.39	0.61	0.00	0.02
2020	0.00	0.55	0.45	0.00	0.02
3030	0.00	0.06	0.94	0.00	0.03
Reverse side	0.00	0.34	0.66	0.00	0.02

A_e Absorption factor radiance

R_e Reflection coefficient solar spectrum

T_e Transmission coefficient solar spectrum

T_v Transmission coefficient visible spectrum

g-tot_e Total energy transmittance for «closed» external solar shading with glazing, Calculation in accordance with SN EN 13363-1-A1, reference glazing C in accordance with EN 14501, g=0.59, U=1.20 [W/m²K]

Inspired by the **Sun.**

griesser.com

