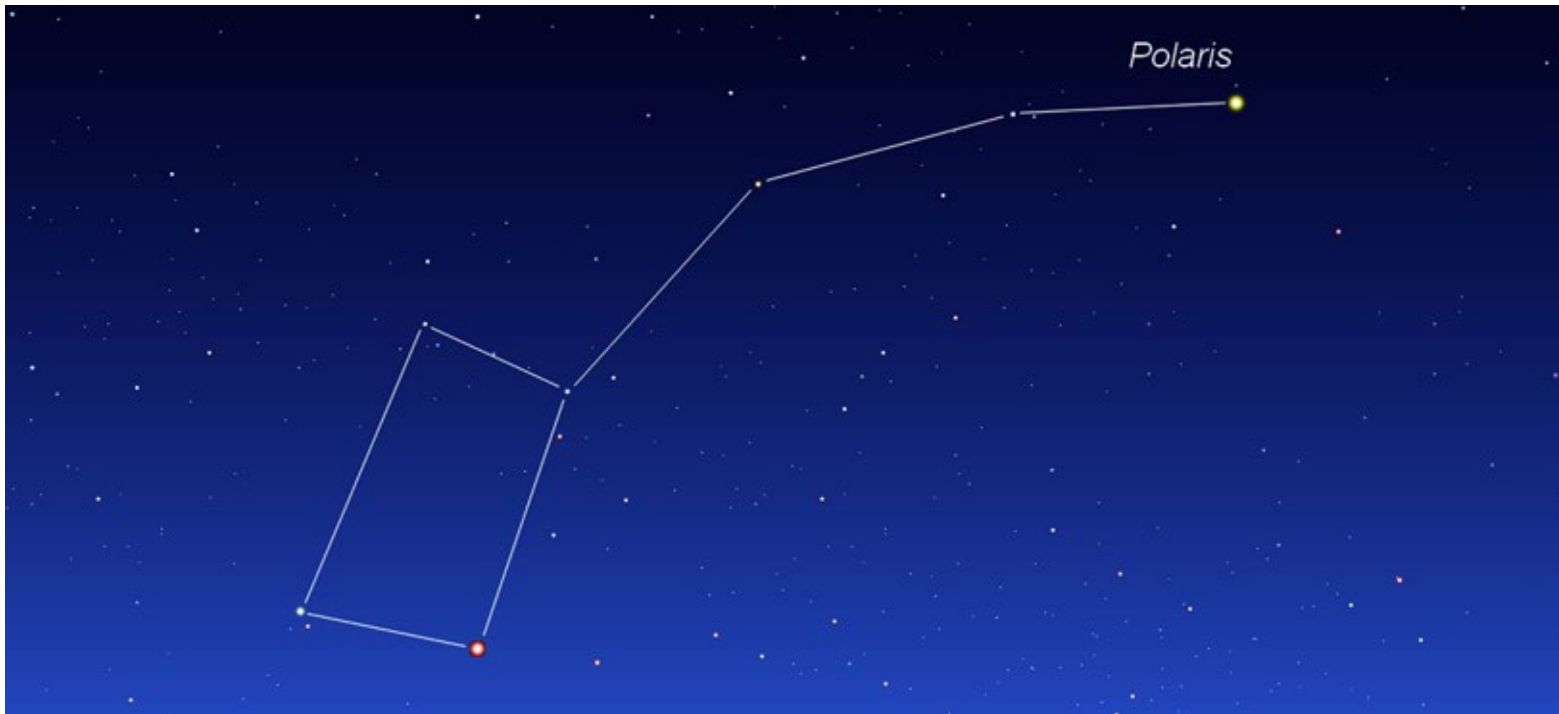


**Collection Soloroll.**  
The automatic choice.



Architecte : Xanadu Architectes et Urbanistes / Maître d'œuvre : Icade

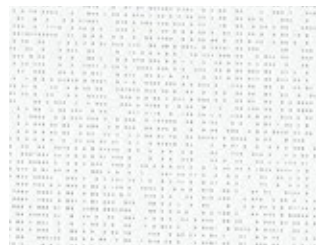


# Solis Master 99

(Polyester with PVC)



(A) Alu Face\*



99-51306

(B)



(A)

99-51307

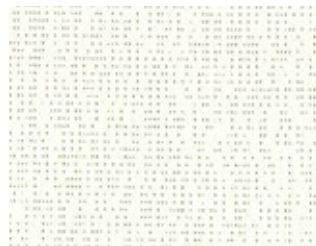
(B)



(A)

99-51308

(B)



(A)

99-51309

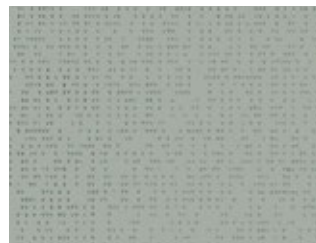
(B)



(A)

99-52058

(B)



(A)

99-52059

(B)

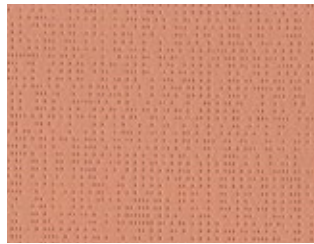






(A)

99-51310



(B)



(A)

99-51311

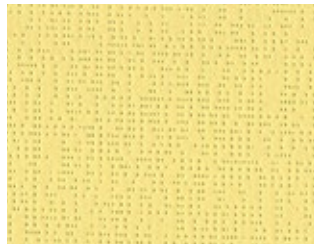


(B)



(A)

99-51312

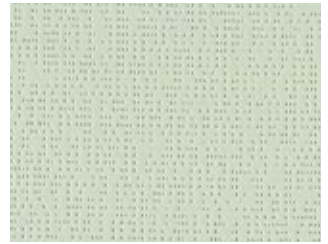


(B)



(A)

99-51313



(B)

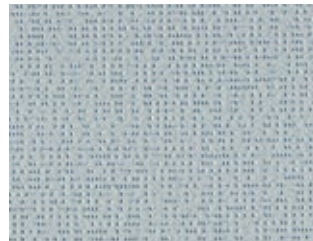


(A)

99-51314



(B)

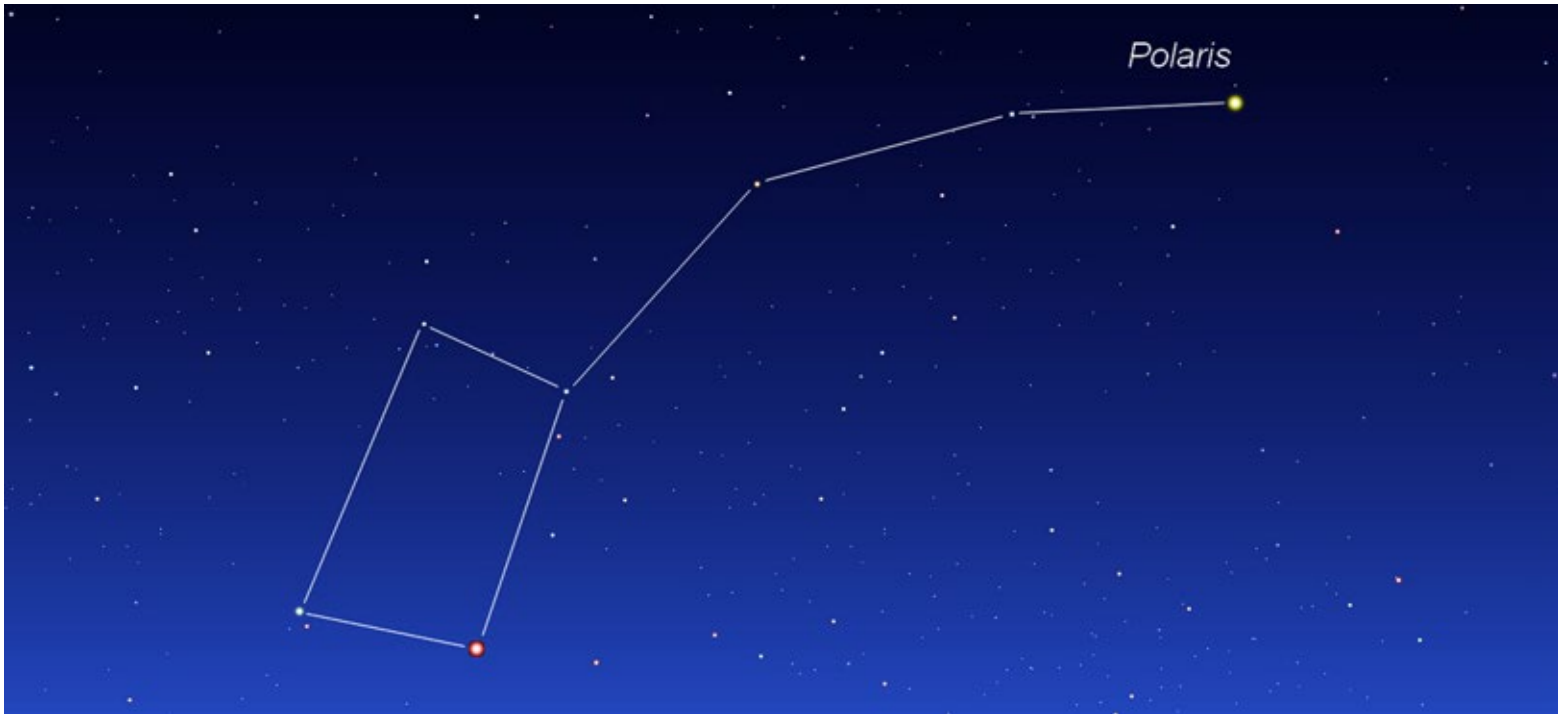


(A)

99-51324



(B)

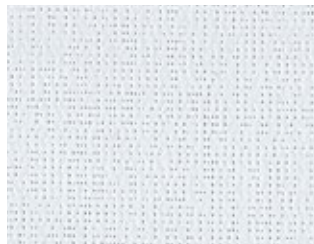


# Solis Master 99

(Polyester with PVC)



(A) Alu Face\*



99-550284

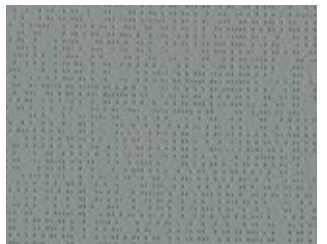
(B)



(A)

99-552073

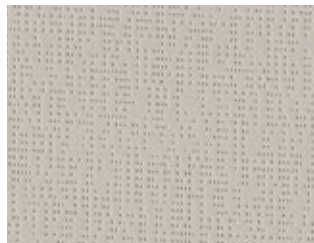
(B)



(A)

99-550286

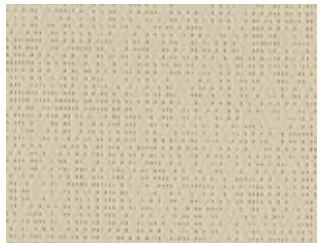
(B)



(A)

99-550287

(B)



(A)

99-550288

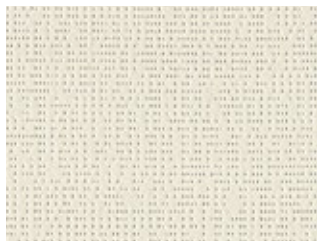
(B)



(A)

99-550285

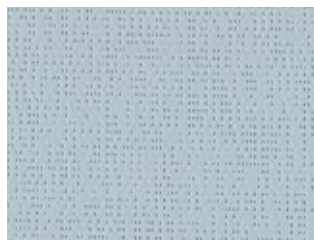
(B)



(A)

99-550299

(B)

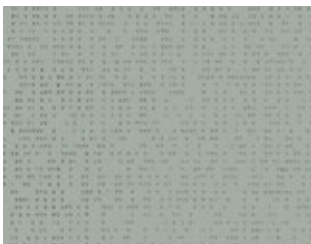


(A)

99-52068

(B)





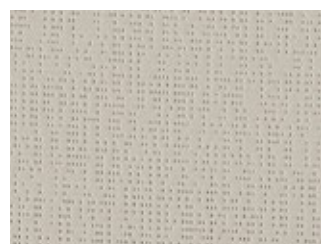
99-2011 Alu Face\* (B)



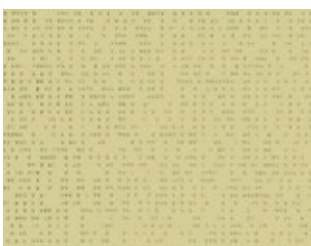
99-2069 (B)



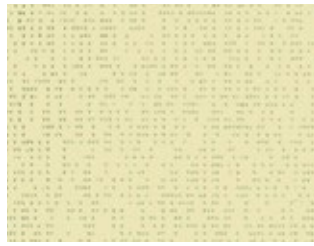
99-50305 (B)



99-2135 (B)



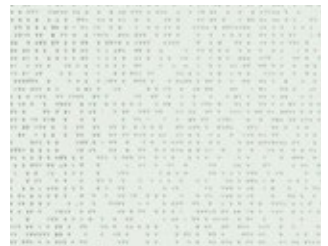
99-50265 (B)



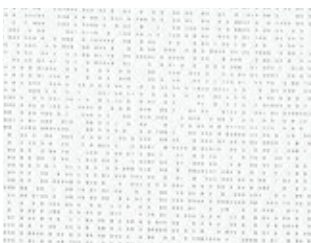
99-50303 (B)



99-2044 (B)



99-50301 (B)

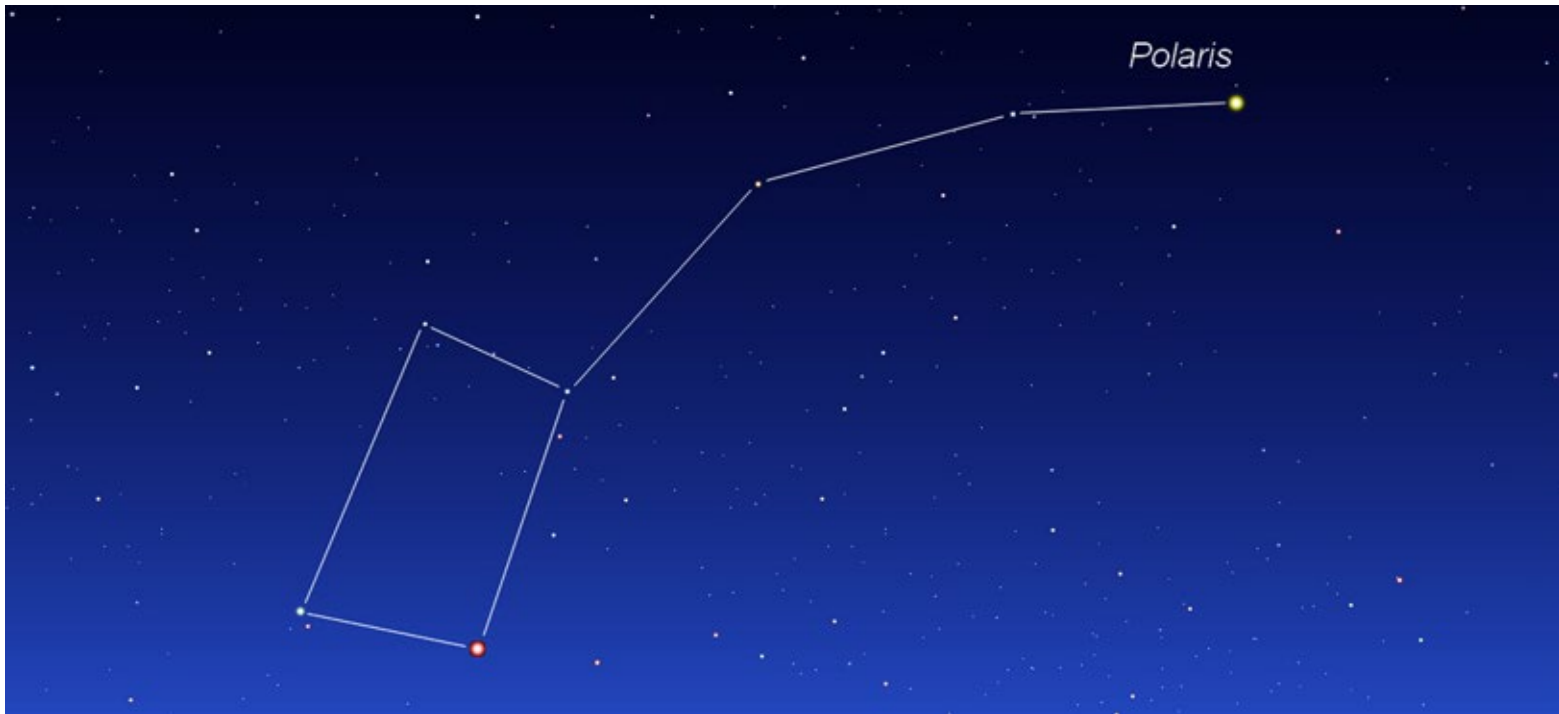


99-50690 (B)

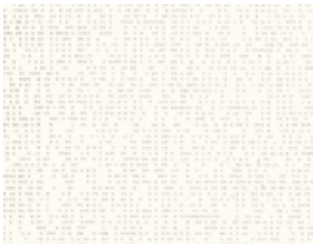


99-2047 (B)





## Soltis Master 99



White face

(A)



99-52115

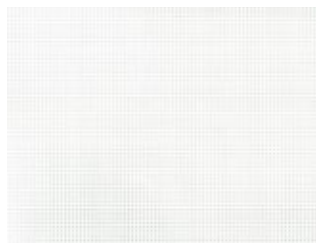
(B)

## Soltis Feel 99 LowE



(A)

99-2061 E

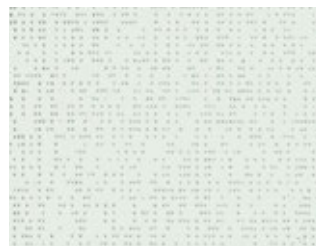


(B)

**Soltis Blackout B99 / B990 / B702**



B99-Back alu\* (A)



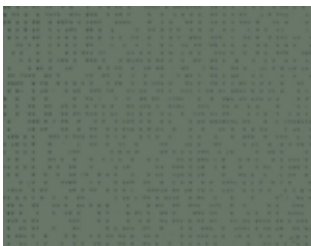
B99-50284 (B)



B99-51936 (B)



B99-50613 (B)



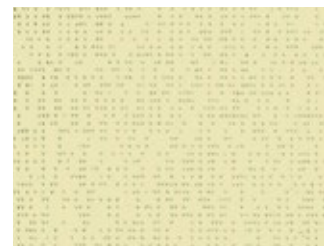
B99-50354 (B)



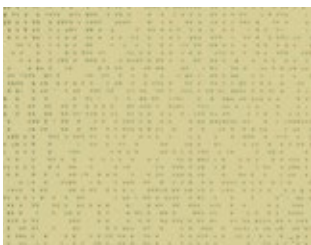
B99-50614 (B)



B99-50288 (B)



B99-50285 (B)



B99-50287 (B)

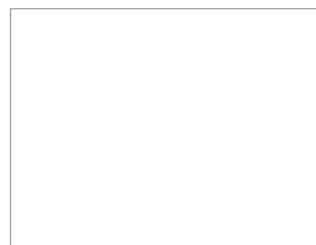


B99-51327 (B)

\*Common to all B99 fabrics



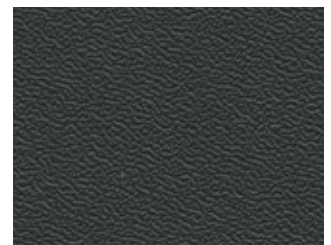
(A) B990-51328



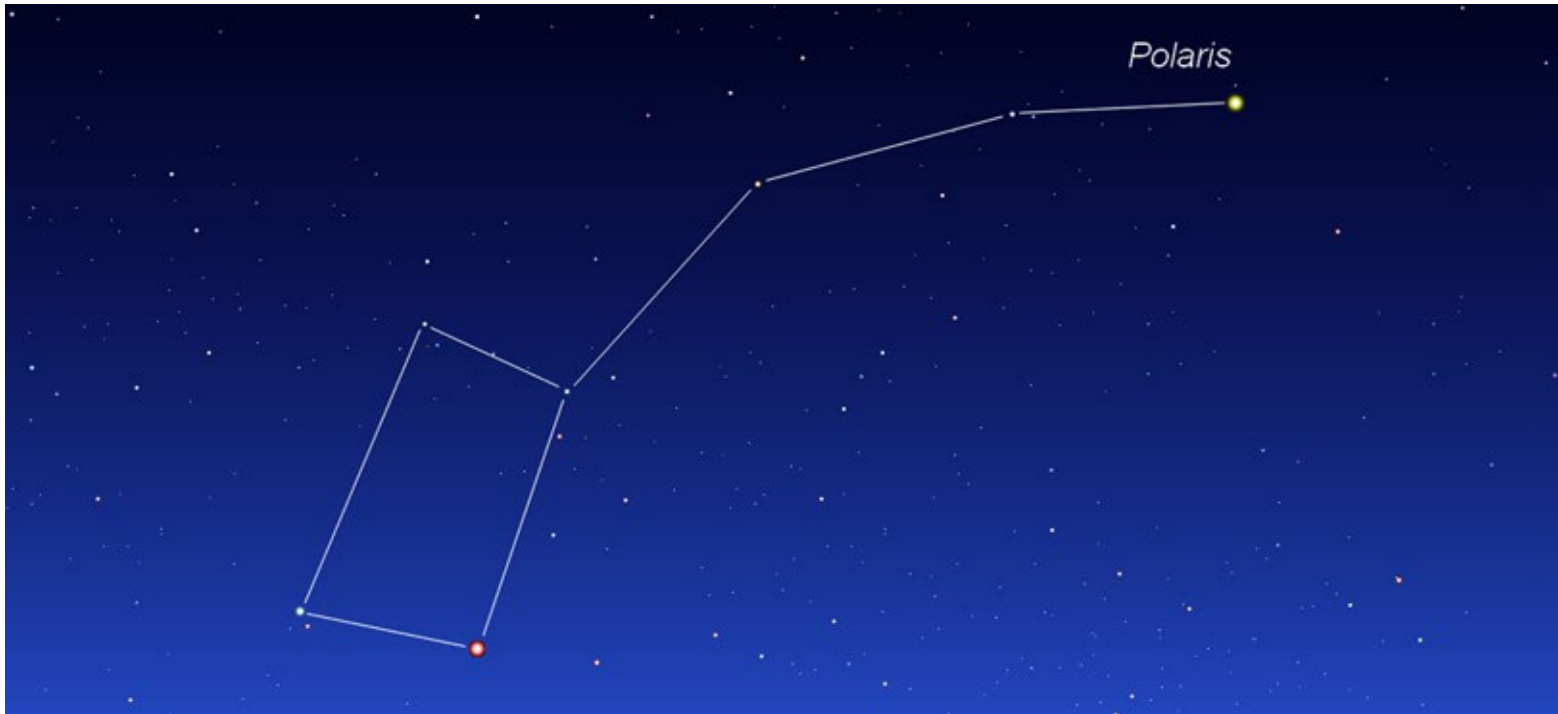
(B)



(A) B702-455



(B)



## Soltis Touch 3%



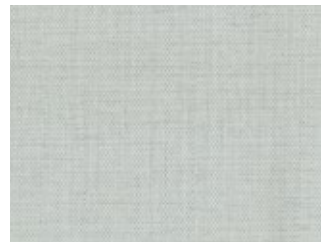
7653-50982



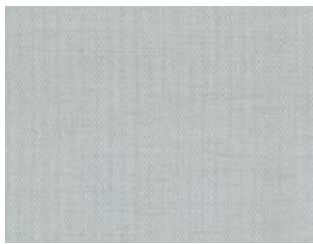
7653-50937



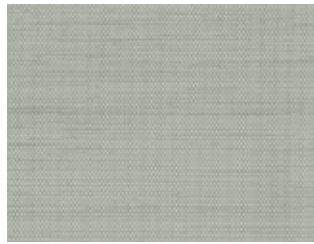
7653-50953



7653-50946



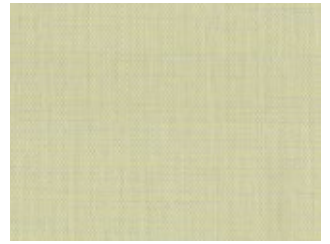
7653-50945



7653-50959



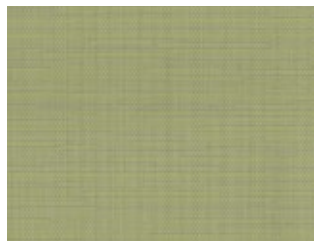
7653-50955



7653-50941



7653-50942



7653-50962



7653-50954



7653-50964



7653-50957



7653-50960



7653-50952



7653-50938





7653-50943



7653-50947



7653-50949



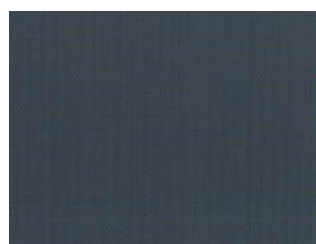
7653-50961



7653-50950



7653-50944



7653-50963



7653-50939



7653-50948



7653-50958



7653-50951

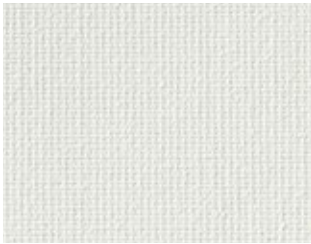


7653-50940

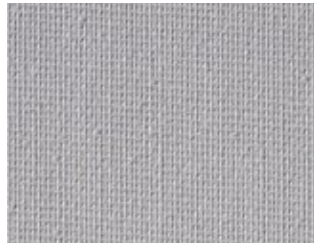


## 40818 Starlet Transparent

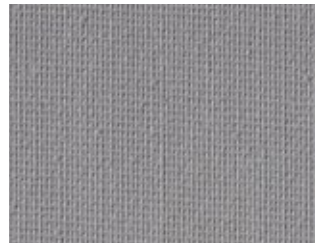
(Polyester without PVC)



40818-4898



40818-5108



40818-5770



40818-6117



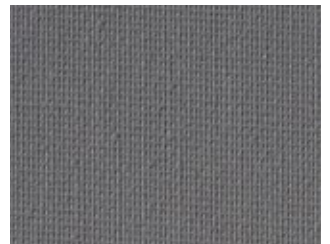
40818-4899



40818-10331



40818-7616



40818-6625



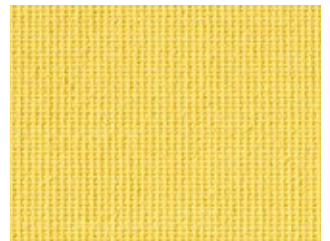
40818-5832



40818-10328



40818-10327



40818-10326



40818-10332



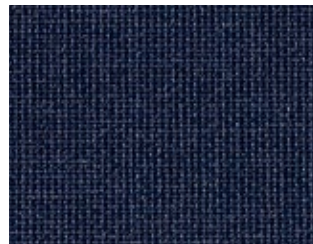
40818-10330



40818-10329



40818-7625



40818-7628





## 40985 Starlet Blackout Color

(Polyester without PVC)



(B)

40985-4898



(A)



(B)

40985-106117

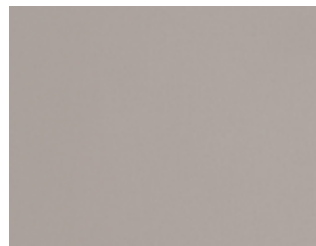


(A)



(B)

40985-10331



(A)



(B)

40985-4899

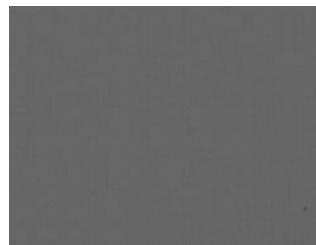


(A)



(B)

40985-7616



(A)



(B)

40985-5108



(A)



(B)

40985-5770

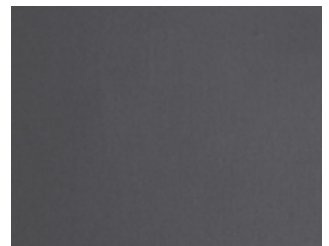


(A)



(B)

40985-6625



(A)

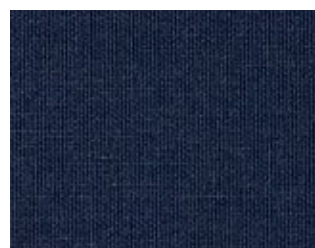


(B)

40985-5832



(A)



(B)

40985-7628

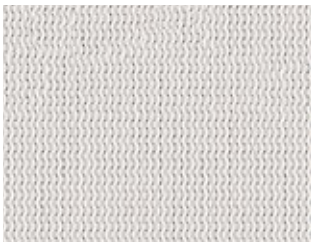


(A)

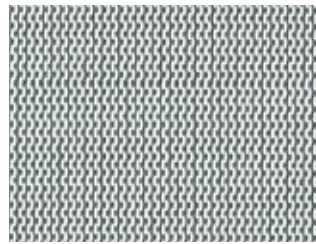


## M-Screen 8505

(Fiberglass with PVC)



8505-0207



8505-0201



8505-0702



8505-0721



8505-0707



8505-0701



8505-0730



8505-0121



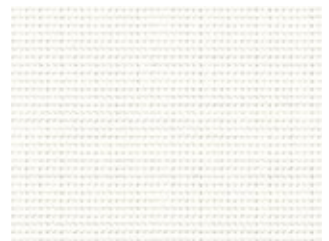
8505-0101



8505-3002



8505-3001



8505-0202





8505-0221



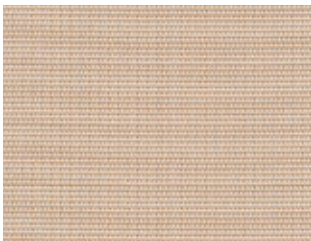
8505-0220



8505-0210



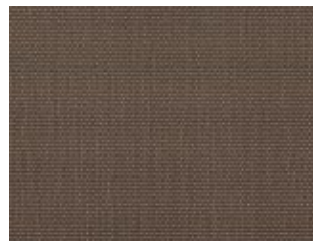
8505-0720



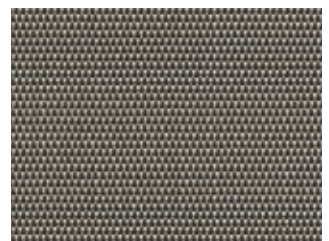
8505-0771



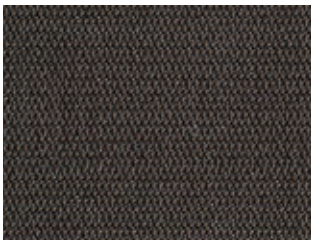
8505-0171



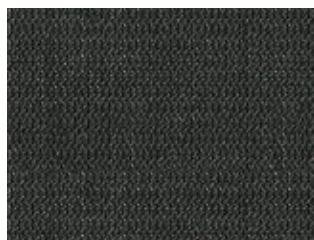
8505-3071



8505-3010



8505-3006

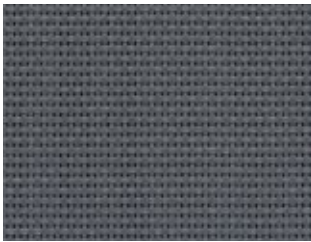


8505-3030

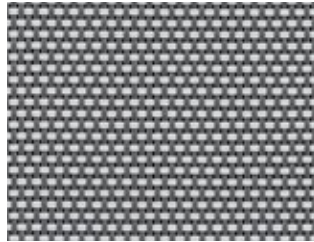


## Screen Vision 1-3-5-10%

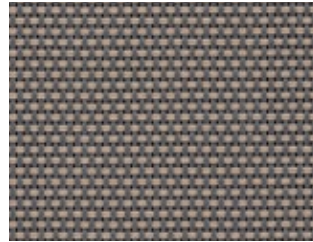
(Fiberglass with PVC)



SV10-0101



SV10-0102



SV10-0110



SV10-0202



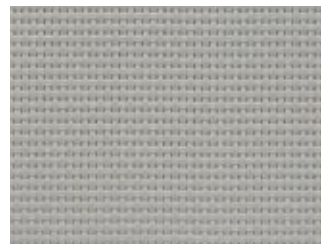
SV10-0207



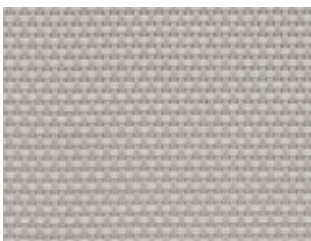
SV10-0210



SV10-0220



SV10-0707



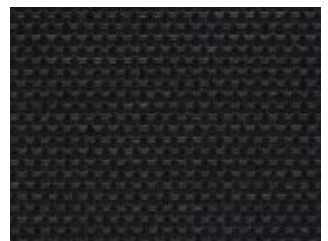
SV10-0720



SV10-3001



SV10-3006



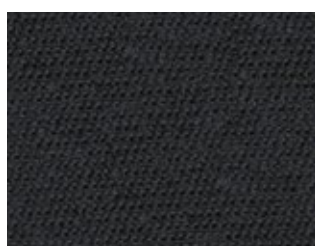
SV10-3030

## Flocké 11201

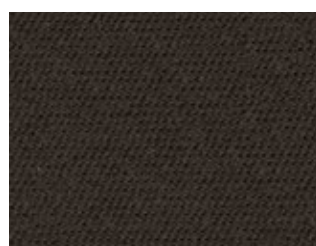
(Fiberglass without PVC)



Back white\* (B)



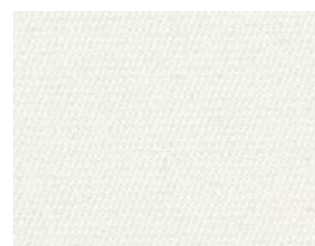
11201-606



11201-617



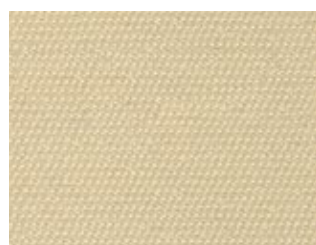
11201-608



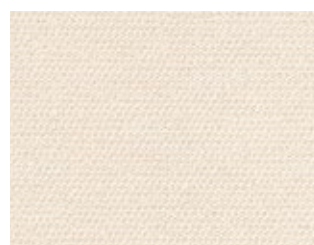
11201-600



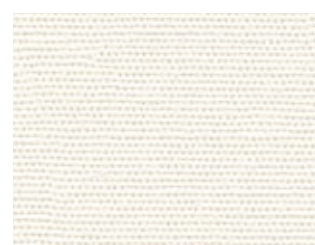
11201-609



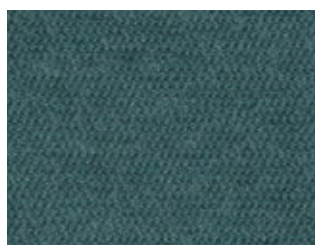
11201-618



11201-625



11201-623



11201-614

\*Common to all 11201 fabrics





## KIBO 8500

(Fiberglass without PVC)



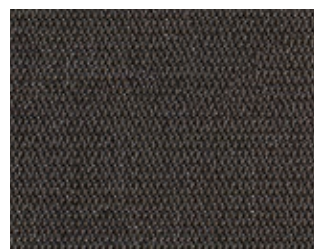
Back white (B)



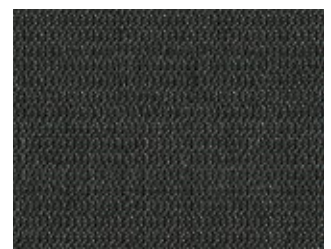
8500-0207



8500-0707



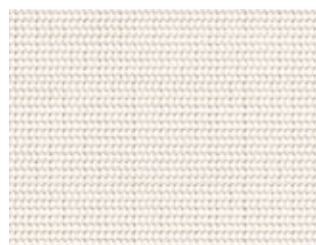
8500-3006



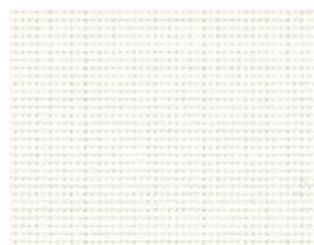
8500-3030



8500-3010



8500-0220



8500-0202



8500-0101

\*Common to all 8500 fabrics





## Soltis Master 99

Fire resistance M1 B1 B-s2 d0 VKF 5.3

Weight/m<sup>2</sup> 0,29kg

Size 0,32mm

		T <sub>e</sub>	R <sub>e</sub>	A <sub>e</sub>	T <sub>v</sub>	g-tot <sub>i</sub>
99-51306	A	0.13	0.54	0.33	0.12	0.17
	B	0.13	0.67	0.20	0.12	0.12
99-51307	A	0.14	0.52	0.34	0.12	0.17
	B	0.14	0.64	0.22	0.12	0.14
99-51308	A	0.13	0.53	0.34	0.11	0.17
	B	0.13	0.64	0.23	0.11	0.14
99-51309	A	0.12	0.53	0.35	0.10	0.17
	B	0.12	0.66	0.22	0.10	0.12
99-51310	A	0.11	0.48	0.41	0.05	0.19
	B	0.11	0.45	0.44	0.05	0.23
99-51311	A	0.04	0.41	0.55	0.03	0.20
	B	0.04	0.16	0.80	0.03	0.27
99-51312	A	0.14	0.50	0.36	0.12	0.18
	B	0.14	0.55	0.31	0.12	0.18
99-51313	A	0.13	0.50	0.37	0.10	0.18
	B	0.13	0.56	0.31	0.10	0.17
99-51314	A	0.04	0.40	0.56	0.03	0.21
	B	0.04	0.15	0.81	0.03	0.27
99-51324	A	0.11	0.49	0.40	0.05	0.19
	B	0.11	0.50	0.39	0.05	0.20
99-52058	A	0.09	0.47	0.44	0.07	0.19
	B	0.09	0.43	0.48	0.07	0.19
99-52059	A/B	0.07	0.47	0.46	0.06	0.19
99-52068	A	0.04	0.40	0.56	0.03	0.21
	B	0.04	0.08	0.88	0.03	0.29

		T <sub>e</sub>	R <sub>e</sub>	A <sub>e</sub>	T <sub>v</sub>	g-tot <sub>i</sub>
99-550284	A	0.10	0.53	0.37	0.07	0.17
	B	0.10	0.64	0.26	0.07	0.14
99-550285	A	0.13	0.51	0.36	0.10	0.18
	B	0.13	0.60	0.27	0.10	0.16
99-550286	A	0.10	0.46	0.44	0.07	0.19
	B	0.10	0.44	0.46	0.07	0.20
99-550287	A	0.08	0.49	0.43	0.06	0.18
	B	0.08	0.48	0.44	0.06	0.19
99-550288	A	0.07	0.46	0.47	0.05	0.19
	B	0.07	0.39	0.54	0.05	0.21
99-550299	A	0.09	0.48	0.43	0.07	0.18
	B	0.09	0.47	0.44	0.07	0.19
99-552073	A	0.05	0.42	0.53	0.04	0.20
	B	0.05	0.24	0.71	0.04	0.24
99-2011	A/B	0.12	0.44	0.44	0.08	0.19
99-2044	A/B	0.23	0.66	0.11	0.21	0.12
99-2047	A/B	0.03	0.08	0.89	0.03	0.28
99-2069	A/B	0.06	0.23	0.71	0.04	0.25
99-2135	A/B	0.13	0.43	0.44	0.09	0.20
99-50265	A/B	0.15	0.47	0.38	0.10	0.19
99-50301	A/B	0.20	0.61	0.19	0.15	0.14
99-50303	A/B	0.21	0.59	0.20	0.15	0.16
99-50305	A/B	0.10	0.38	0.52	0.06	0.21
99-50690	A/B	0.21	0.68	0.11	0.18	0.12
99-52115	A	0.08	0.65	0.27	0.08	0.12
	B	0.06	0.06	0.88	0.06	0.29

## Soltis Feel 99 Low-e

Fire resistance M1 B1 B-s2 d0 VKF 5.2

Weight/m<sup>2</sup> 0,36kg \*0,29kg

Size 0,45mm \*0,32mm

		T <sub>e</sub>	R <sub>e</sub>	A <sub>e</sub>	T <sub>v</sub>	g-tot <sub>i</sub>
99-2061 E*	A	0.08	0.71	0.21	0.07	0.34
	B	0.08	0.70	0.22	0.07	0.34

## Soltis Blackout B99 | B990 | B702

Fire resistance M2 B1 B-s2 d0 VKF 5.3

Weight/m<sup>2</sup> 0,54kg \*0,65kg \*\*0,75kg

Size 0,47mm \*0,53mm \*\*0,60mm

		T <sub>e</sub>	R <sub>e</sub>	A <sub>e</sub>	T <sub>v</sub>	g-tot <sub>i</sub>
B 99-50284	B	0.00	0.62	0.38	0.00	0.13
B 99-50285	B	0.00	0.60	0.40	0.00	0.14
B 99-50287	B	0.00	0.47	0.53	0.00	0.18
B 99-50288	B	0.00	0.40	0.60	0.00	0.20
B 99-50354	B	0.00	0.25	0.75	0.00	0.18
B 99-50613	B	0.00	0.45	0.55	0.00	0.18
B 99-50614	B	0.00	0.08	0.92	0.00	0.27

		T <sub>e</sub>	R <sub>e</sub>	A <sub>e</sub>	T <sub>v</sub>	g-tot <sub>i</sub>
B 99-51327	B	0.00	0.69	0.31	0.00	0.11
B 99-51936	B	0.00	0.49	0.51	0.00	0.18
B 99-Verso		0.00	0.29	0.71	0.00	0.22
B 990-51328*	B	0.00	0.69	0.31	0.00	0.11
B 990-Verso*		0.00	0.77	0.23	0.00	0.07
B702-455**	A	0.00	0.72	0.28	0.01	0.15
	B	0.00	0.06	0.94	0.04	0.29



## Soltis Touch 3%

Fire resistance M1 B1 B-s2 d0 VKF 5.3

Weight/m<sup>2</sup> 0,47kg

Size 0,75mm

### Touch 3%

	T <sub>e</sub>	R <sub>e</sub>	A <sub>e</sub>	T <sub>v</sub>	g-tot <sub>i</sub>
7653-50937	0.08	0.55	0.37	0.07	0.31
7653-50938	0.04	0.28	0.68	0.04	0.43
7653-50939	0.04	0.14	0.82	0.04	0.49
7653-50940	0.04	0.09	0.87	0.04	0.51
7653-50941	0.07	0.48	0.45	0.04	0.35
7653-50942	0.05	0.31	0.64	0.04	0.42
7653-50943	0.03	0.23	0.74	0.03	0.45
7653-50944	0.04	0.11	0.85	0.04	0.51
7653-50945	0.06	0.46	0.48	0.05	0.35
7653-50946	0.07	0.45	0.48	0.06	0.35
7653-50947	0.06	0.33	0.61	0.05	0.41
7653-50948	0.05	0.15	0.80	0.05	0.49
7653-50949	0.05	0.32	0.63	0.04	0.42
7653-50950	0.04	0.11	0.85	0.04	0.51

	T <sub>e</sub>	R <sub>e</sub>	A <sub>e</sub>	T <sub>v</sub>	g-tot <sub>i</sub>
7653-50951	0.04	0.11	0.85	0.03	0.51
7653-50952	0.05	0.25	0.70	0.04	0.45
7653-50953	0.07	0.52	0.41	0.06	0.32
7653-50954	0.07	0.44	0.49	0.06	0.32
7653-50955	0.06	0.47	0.47	0.05	0.35
7653-50957	0.06	0.35	0.59	0.05	0.40
7653-50958	0.04	0.12	0.84	0.04	0.50
7653-50959	0.06	0.40	0.54	0.06	0.38
7653-50960	0.05	0.26	0.69	0.04	0.45
7653-50961	0.05	0.26	0.69	0.04	0.45
7653-50962	0.05	0.32	0.63	0.04	0.42
7653-50963	0.04	0.11	0.85	0.04	0.51
7653-50964	0.05	0.30	0.65	0.05	0.42
7653-50982	0.14	0.75	0.11	0.12	0.22

## Starlet 40818 | Blackout Color 40985

Fire resistance M1 B1 C1

Weight/m<sup>2</sup> 0,215kg \*0,325kg

Size 0,35mm \*0,44mm

	T <sub>e</sub>	R <sub>e</sub>	A <sub>e</sub>	T <sub>v</sub>	g-tot <sub>i</sub>
40818-4898	0.18	0.73	0.09	0.149	0.33
40818-4899	0.12	0.60	0.28	0.080	0.36
40818-5108	0.06	0.47	0.47	0.030	0.40
40818-5770	0.03	0.38	0.59	0.020	0.43
40818-5832	0.00	0.06	0.94	0.000	0.52
40818-6117	0.15	0.71	0.14	0.135	0.33
40818-6625	0.00	0.19	0.81	0.000	0.48
40818-7616	0.00	0.21	0.79	0.000	0.48
40818-7625	0.01	0.23	0.76	0.000	0.47
40818-7628	0.00	0.11	0.89	0.000	0.50
40818-10326	0.18	0.60	0.22	0.131	0.37
40818-10327	0.15	0.56	0.29	0.050	0.38
40818-10328	0.15	0.48	0.37	0.010	0.40
40818-10329	0.12	0.38	0.50	0.000	0.43

	T <sub>e</sub>	R <sub>e</sub>	A <sub>e</sub>	T <sub>v</sub>	g-tot <sub>i</sub>
40818-10330	0.10	0.44	0.46	0.000	0.41
40818-10331	0.04	0.39	0.57	0.010	0.42
40818-10332	0.12	0.57	0.31	0.070	0.37
40985-4898*	0.00	0.74	0.26	0.000	0.32
40985-4899*	0.00	0.57	0.43	0.000	0.37
40985-5108*	0.00	0.49	0.51	0.000	0.39
40985-5770*	0.00	0.34	0.66	0.000	0.44
40985-5832*	0.00	0.05	0.95	0.000	0.52
40985-6117*	0.00	0.64	0.36	0.000	0.35
40985-6625*	0.00	0.17	0.83	0.000	0.49
40985-7616*	0.00	0.16	0.84	0.000	0.49
40985-7628*	0.00	0.09	0.91	0.000	0.51
40985-10331*	0.00	0.44	0.56	0.000	0.41

## M-Screen 8505

Fire resistance M1 B1 C-s3 d0

Weight/m<sup>2</sup> 0,39kg

Size 0,50mm

	T <sub>e</sub>	R <sub>e</sub>	A <sub>e</sub>	T <sub>v</sub>	g-tot <sub>i</sub>
8505-0101	0.11	0.20	0.69	0.08	0.29
8505-0121	0.14	0.28	0.58	0.11	0.27
8505-0171	0.15	0.26	0.59	0.11	0.27
8505-0201	0.15	0.44	0.41	0.12	0.21
8505-0202	0.21	0.67	0.12	0.21	0.14
8505-0207	0.18	0.52	0.30	0.16	0.18
8505-0210	0.17	0.52	0.31	0.14	0.20
8505-0220	0.22	0.60	0.18	0.20	0.18
8505-0221	0.24	0.60	0.16	0.23	0.17
8505-0701	0.12	0.29	0.59	0.10	0.25
8505-0702	0.16	0.47	0.37	0.14	0.20

	T <sub>e</sub>	R <sub>e</sub>	A <sub>e</sub>	T <sub>v</sub>	g-tot <sub>i</sub>
8505-0707	0.16	0.34	0.50	0.14	0.23
8505-0720	0.17	0.41	0.42	0.15	0.23
8505-0721	0.19	0.39	0.42	0.17	0.23
8505-0730	0.09	0.22	0.69	0.08	0.27
8505-0771	0.19	0.38	0.43	0.16	0.24
8505-3001	0.06	0.09	0.85	0.05	0.31
8505-3002	0.07	0.20	0.73	0.06	0.27
8505-3006	0.05	0.06	0.89	0.06	0.31
8505-3010	0.06	0.12	0.82	0.05	0.29
8505-3030	0.04	0.05	0.91	0.04	0.31
8505-3071	0.07	0.12	0.81	0.06	0.29

## Screen Vision

Fire resistance M1 B1 C-s3 d0

Weight/m<sup>2</sup> 0,35kg

Size 0,45mm

10%

	T <sub>e</sub>	R <sub>e</sub>	A <sub>e</sub>	T <sub>v</sub>	g-tot <sub>i</sub>
SV10-0101	0.17	0.18	0.65	0.14	0.28
SV10-0102	0.19	0.31	0.50	0.16	0.25
SV10-0110	0.17	0.23	0.60	0.14	0.27
SV10-0202	0.28	0.62	0.10	0.27	0.16
SV10-0207	0.25	0.50	0.25	0.22	0.19
SV10-0210	0.24	0.49	0.27	0.21	0.20

	T <sub>e</sub>	R <sub>e</sub>	A <sub>e</sub>	T <sub>v</sub>	g-tot <sub>i</sub>
SV10-0220	0.27	0.56	0.17	0.25	0.18
SV10-0707	0.21	0.33	0.46	0.19	0.24
SV10-0720	0.24	0.37	0.39	0.21	0.23
SV10-3001	0.11	0.09	0.80	0.10	0.31
SV10-3006	0.12	0.06	0.82	0.12	0.32
SV10-3030	0.10	0.05	0.85	0.10	0.31

## Flocké 11201

Fire resistance M1 B1

Weight/m<sup>2</sup> 415...550kg

Size 0,45...0,52mm

	T <sub>e</sub>	R <sub>e</sub>	A <sub>e</sub>	T <sub>v</sub>	g-tot <sub>i</sub>
11201-600	0.00	0.73	0.27	0.00	0.11
11201-606	0.00	0.04	0.96	0.00	0.31
11201-608	0.00	0.46	0.54	0.00	0.22
11201-609	0.00	0.25	0.75	0.00	0.27
11201-614	0.00	0.17	0.83	0.00	0.29

	T <sub>e</sub>	R <sub>e</sub>	A <sub>e</sub>	T <sub>v</sub>	g-tot <sub>i</sub>
11201-617	0.00	0.04	0.96	0.00	0.31
11201-618	0.00	0.63	0.37	0.00	0.16
11201-623	0.00	0.69	0.31	0.00	0.15
11201-625	0.00	0.74	0.26	0.00	0.12
Verso	0.00	0.70	0.30	0.00	0.11

A<sub>e</sub> Absorption factor radiance

R<sub>e</sub> Reflection coefficient solar spectrum

T<sub>e</sub> Transmission coefficient solar spectrum

T<sub>v</sub> Transmission coefficient visible spectrum

g-tot<sub>e</sub> Total energy transmittance for «closed» external solar shading with glazing, Calculation in accordance with SN EN 13363-1-A1, reference glazing C in accordance with EN 14501, g=0.59, U=1.20 [W/m<sup>2</sup>K]

g-tot<sub>i</sub> Interior g-value - reference glazing C in accordance with EN 14501, g=0.59, U=1.20 [W/m<sup>2</sup>K]

# Kibo 8500

Fire resistance M1

Weight/m<sup>2</sup> 0,59...0,65kg

Size 0,50...0,55mm

	T <sub>e</sub>	R <sub>e</sub>	A <sub>e</sub>	T <sub>v</sub>	g-tot <sub>i</sub>
<b>8500-0101</b>	0.00	0.23	0.77	0.00	0.28
<b>8500-0202</b>	0.00	0.74	0.26	0.00	0.11
<b>8500-0207</b>	0.00	0.58	0.42	0.00	0.16
<b>8500-0220</b>	0.00	0.67	0.33	0.00	0.14
<b>8500-0707</b>	0.00	0.40	0.60	0.00	0.15

	T <sub>e</sub>	R <sub>e</sub>	A <sub>e</sub>	T <sub>v</sub>	g-tot <sub>i</sub>
<b>8500-3006</b>	0.00	0.06	0.94	0.00	0.31
<b>8500-3010</b>	0.00	0.13	0.87	0.00	0.29
<b>8500-3030</b>	0.00	0.05	0.95	0.00	0.31
<b>Verso</b>	0.00	0.64	0.36	0.00	0.14





[www.griessergroup.com](http://www.griessergroup.com)

