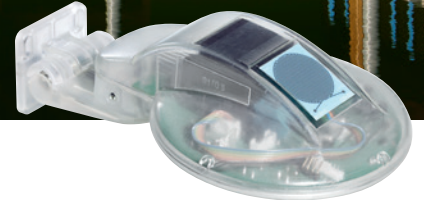
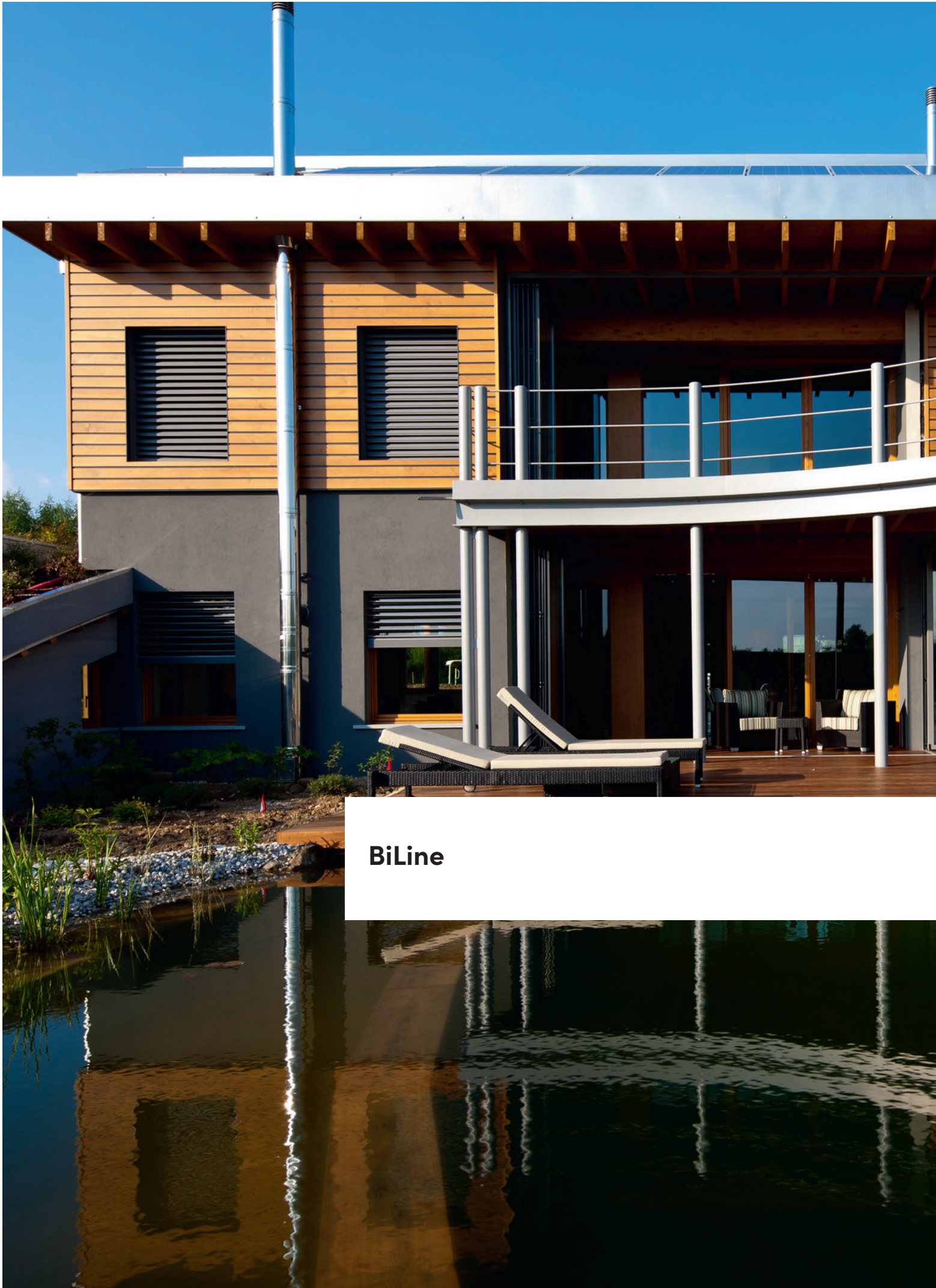




**Radio controls from Griesser.**  
Griesser BiLine







**BiLine**

License-free radio frequency 868 MHz  
Single operation  
Simultaneous operation  
Radio receiver optimized for blinds product

---

### **Griesser BiLine – radio controlled at a glance**

The Griesser BiLine control system offers reliable radio transmission combined with contemporary design and an esthetic that fits in unobtrusively in any surroundings. Wireless systems have the advantage of being installed quickly, not only in new buildings but also when refitting an automated system in existing buildings. Control systems from Griesser – automatically good.

---

#### **Griesser operation by Smartphone / tablet**

Enables a simple and intuitive operation of the blinds. The App is available for free download from the App Store.



---

#### **Griesser Progreso hand-held transmitter**

Controls sun protection systems. Up to 15 receivers or up to 15 groups of receivers can be operated independently.



---

#### **BiLine MonoTec and QuinTec / BiLine UniTec F wall-mounted transmitters**

The wall-mounted transmitters can be used to control the solar shading system. They can be used as an alternative to the Progreso hand-held transmitters.



---

#### **BiLine AstroTec time switch**

The time switch, delivered displaying the current time and date (CET), automatically controls the motors at the desired times.



---

#### **BiLine Aero sun / wind sensor**

Evaluates light and wind with integrated solar cells. For awnings. Does not require a power supply.



---

#### **BiLine Sensero AC sun / wind / rain sensor**

Evaluates light, wind and rain. For external venetian blinds, rolling shutters and awnings. Mains connection ensures power supply.



---

#### **BiLine Lumero sun sensor**

Is a sun sensor with integrated solar cells. Requires no voltage supply.



---

#### **BiLine Revio SW – control unit for one lamp**

You can control your light source directly using the hand-held transmitter with the BiLine Revio SW radio receiver.



# Griesser BiLine – radio-controlled Griesser Progreso hand-held transmitter

- Up to 15 channels
- Manual/automatic operation
- Modern design
- Standard battery
- Visualization per LED
- Integrated timer (Progreso 15 M only)
- Magnetic wall bracket

The Griesser Progreso hand-held transmitter has, in addition to such manual commands as Up, Stop and Down, functions such as intermediate positions and a programmable slat angle



Progreso 15 M



Progreso 1



Progreso 1 M



Progreso 5 M

## Purpose of Progreso 15 M

- Actuation of up to 15 receivers or groups of receivers.
- Automatic merging of Channels 1 to 15 as master operation for solar shading products.
- Dimming illuminations up and down (LED light bar).
- Additional button for switching between manual and automatic operation
- Menu navigation via illuminated display with product-specific icons
- Simple operation with joystick
- 10 languages to choose from
- Names can be assigned to the channels

## Purpose of Progreso 1 / 1 M

- Actuation of a receiver or a group of receivers.
- Switching and dimming of illuminations (LED light bar).
- Additional button for switching between manual and automatic operation (Progreso 1 M).

## Purpose of Progreso 5 M

- Actuation of 5 receivers or up to 5 groups of receivers.
- Automatic merging of Channels 1 to 5 as master operation for solar shading products.
- Dimming illuminations up and down (LED light bar).
- Additional button for switching between manual and automatic operation.

## Technical data

### Progreso 15 M

Operating voltage	3 V DC
Type of protection	IP 20
Protection class	II
Ambient temperature	0 bis +55°C
Dimensions	150 x 51 x 26 mm
Weight	140 g
Battery type	2 x LR 06 (AA Mignon cell)
Radio frequency	868 MHz

## Technical data

### Progreso 1/1 M/5 M

Operating voltage	3 V DC
Type of protection	IP 20
Protection class	II
Ambient temperature	0 bis +55°C
Dimensions	120 x 51 x 26 mm
Weight	120 g
Battery type	2 x LR 06 (AA Mignon cell)
Radio frequency	868 MHz



# Griesser BiLine – radio controlled wall-mounted transmitters

- 1 - 5 channels
- Manual/automatic operation
- Standard battery
- On-wall or in-wall mounting

The BiLine wall-mounted transmitter is used to operate a solar shading system within a room.



BiLine MonoTec | QuinTec



BiLine UniTec F



BiLine AstroTec

## Intended use: BiLine MonoTec and QuinTec / BiLine UniTec F

1 (MonoTec) or 5 (QuinTec) radio-channel wall-mounted transmitters for controlling one or more receivers.

Manual (up, stop, down) or automatic operation

MonoTec: Without manual/automatic operation switching

QuinTec: With manual/automatic operation switching

Operation within a room.

Simple surface mounting or concealed installation without wiring.

Manual commands such as up, stop, down, and shading position

LED for transmission control

## Intended use: BiLine AstroTec

Wall-mounted transmitter for actuation of one or more receivers.

Timer with a variety of functions, e.g. astro times (sunrise and sunset times) or vacation function, block times, times of the day and times of the week.

Manual (Up, Stop, Down) or Automatic operation (automatic timer).

Automatic switching between Daylight Savings and Standard Time.

Intermediate positions.

Simple wall-mounting without cables.

### Technical data

#### BiLine MonoTec

Operating voltage	3 V DC
Type of protection	IP 20
Protection class	II
Ambient temperature	0–50°C
Dimension	88 x 88 x 20 mm
Battery type	CR 2032
Battery life	2 years
Radio frequency	868 MHz

### Technical data

#### BiLine QuinTec

Operating voltage	3 V DC
Type of protection	IP 20
Protection class	II
Ambient temperature	0–50°C
Dimension	88 x 88 x 20 mm
Battery type	CR 2032
Battery life	2 years
Radio frequency	868 MHz

### Technical data

#### UniTec F


Operating voltage	3 V DC
Type of protection	IP 20
Protection class	II
Ambient temperature	0 °C to +50 °C
Dimension	85 x 85 x 23 mm
Battery type	CR 2032
Battery life	2 years
Radio frequency	868 MHz

### Technical data

#### BiLine AstroTec

Operating voltage	3 V DC
Type of protection	IP 20
Protection class	II
Ambient temperature	0–50°C
Dimension	85 x 85 x 29 mm
Battery type	2x LR03 (AAA)
Battery life	2 years
Radio frequency	868 MHz

 Only deliverable in Switzerland.

 Only deliverable to Europe.

## Griesser BiLine – radio-controlled sensors

Record sun/wind values  
 Inconspicuous housing  
 No need to lay cables (BiLine Aero/  
 BiLine Lumero)  
 Solar supply (BiLine Aero/BiLine  
 Lumero)  
 Mains supply 230 V AC (BiLine Sensero)

### Purpose of BiLine Aero / BiLine Sensero AC / BiLine Sensero AC Plus

Sun/wind/rain sensor.  
 Integrated solar cells for supplying the BiLine Aero.  
 No need to lay cables (BiLine Aero).  
 Option for switching off the sun and rain sensor.  
 LED status indicator for sun, wind and rain signals.  
 Sets the threshold sun, wind and rain levels with a potentiometer.  
 Transparent housing.



BiLine Aero

### Purpose of BiLine Lumero

Sun sensor.  
 Integrated solar cells for power supply.  
 No need to lay cables.  
 Sets the threshold sun levels with a potentiometer.  
 Sun control for all shading systems.  
 Transparent housing.



BiLine Sensero AC Plus

### Technical data

#### BiLine Sensero AC (sun/wind sensor 230 V AC)

Mains voltage	230 V AC
Type of protection	IP 44
Ambient temperature	-20 to +60°C
Dimensions	205 x 120 x 105 mm
Angle of reception	150°
Radio frequency	868 MHz

### Technical data

#### BiLine Sensero AC Plus (sun/wind/rain sensor 230 V AC)

Mains voltage	230 V AC
Type of protection	IP 44
Ambient temperature	-20 to +60°C
Dimensions	205 x 125 x 105 mm
Angle of reception	150°
Radio frequency	868 MHz

### Technical data

#### BiLine Aero (sun/wind sensor)

Supply unit	Independent, integrated solar module
Power reserve	~12 hours
Type of protection	IP 43
Ambient temperature	-25 to +60°C
Dimensions	280 x 130 x 130 mm
Angle of reception	150°
Radio frequency	868 MHz

### Technical data

#### BiLine Lumero (sun sensor)

Supply unit	Independent, integrated solar module
Power reserve	~1 hours
Type of protection	IP 54
Ambient temperature	-25 to +60°C
Dimensions	150 x 42 x 28 mm
Angle of reception	190°
Radio frequency	868 MHz



BiLine Lumero







# Griesser BiLine – radio-controlled radio receiver

---

## Characteristics of BiLine Combo

Small and compact design  
Simple to install and retrofit  
Automatic recognition of end position  
Direction of rotation changeable  
Freely adjustable intermediate positions  
Programs sun/wind/rain sensors  
Programs up to 16 transmitters

---



BiLine Combo JA

---

## Characteristics of BiLine Combo JA

Radio receiver for external venetian blinds/venetian blinds  
Automatic slat turning

---



BiLine Combo RM / RFS

---

## Characteristics of BiLine Combo RM

Radio receiver for rolling shutters and façade awnings

---



BiLine Combo RW

---

## Characteristics of BiLine Combo RW

Radio receiver for Rolpac®

---



BiLine Combo MA K

---

## Characteristics of BiLine Combo MA K

Radio receiver for awnings  
Short power cord, integrated motor connection  
Same specifications as Combo RM

---





BiLine Combo MVLED / MLED / LED

#### Characteristics of BiLine Combo MVLED

Radio receivers for awnings with Volant and variant light bar (LED)  
Can be integrated in the product

#### Characteristics of BiLine Combo MLED


Radio receivers for awnings and variant light bar (LED)  
Can be integrated in the product

#### Characteristics of BiLine Combo LED

Radio receiver for LED option (lighting)  
Integrated in the product with the LED option

#### Technical data

Mains voltage	230 V
Standby power	1 W (per channel)
Switching capacity	450 W
Type of protection	IP 54
Ambient temperature	-20 to +80°C
Radio frequency	868 MHz

Receiver	Power connection	Motor connection	Dimensions in mm (W x H x D)
BiLine Combo JA	0,75 m STAS 3	0,22 m STAK 3	97x40x15
BiLine Combo RM	0,25 m STAS 3	0,25 m STAK 3	97x40x15
BiLine Combo RW	0,35 m Wago	0,35 Wago	97x40x15
BiLine Combo MA K	0,25 m STAS 3	STAK 3 integrated	128x34x24
BiLine Combo MVLED / MLED / LED	AMP plug, 2-pin	Awning: AMP socket, 4-pin Valance: AMP socket, 4-pin LED: 2 plug sockets	178x24x52
 BiLine Combo RFS	3 m cable	0,25 m cable	97 x 40 x 15



Only deliverable to Europe.

## Control blinds and light – simply by using the hand-held transmitter or the app

The hand-held transmitter with 15 M display is perfect for operating multiple devices – for instance, to adjust shading or the light.



BiLine Revo SW  
One control unit per light source



## Smartphone / tablet operation

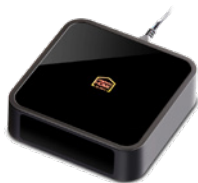
Simple and intuitive operation of your rolling shutters, external venetian blinds, awnings and light via smartphones or tablets

Rapid and simple commissioning

Free App

Visualization of status

Even more living comfort thanks to individual scenes



1 BiLine Centro home



2 BiLine Receiver

## Examples of use



BiLine is available as a MINERGIE® module with a Griesser solar shading system.

[griessergroup.com](https://griessergroup.com)

