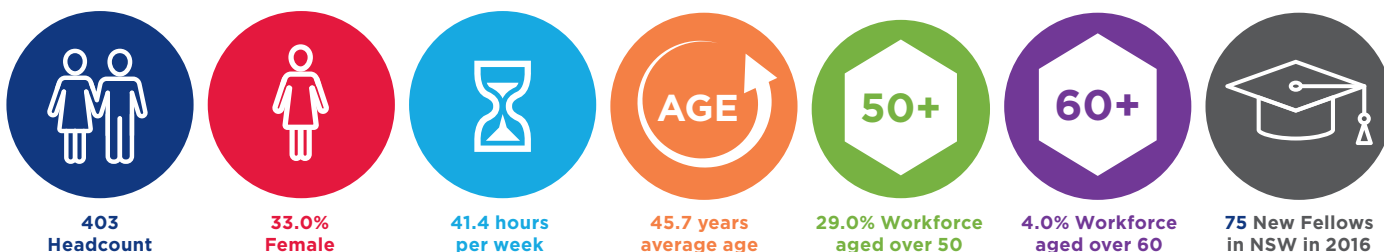


# Emergency

## The Workforce

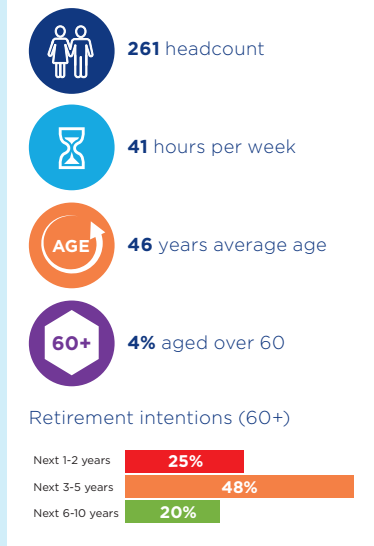
An Emergency Physician works in the emergency medicine field of practice specialising in the prevention, diagnosis and management of any acute disorders with clients of any age within a full spectrum of episodic undifferentiated physical and behavioral disorders who present to an emergency department. The Australasian College for Emergency Medicine (ACEM) is accredited by the Australian Medical Council (AMC) to deliver emergency medicine training.

### Workforce Characteristics in 2015



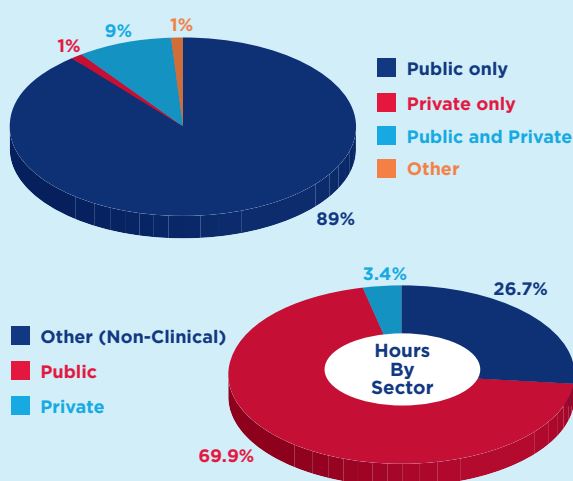
## Supply and Distribution

### Metropolitan Sydney

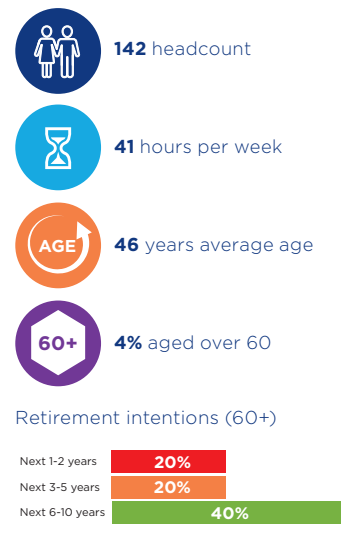


### Total NSW

#### Workforce by Sector (percent)



### Non-Metropolitan Sydney

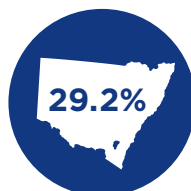


## Trainees

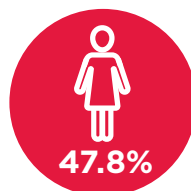


### Advanced Trainees in NSW:

| 2015 | 2016 | 2017 |
|------|------|------|
| 426  | 410  | 433  |



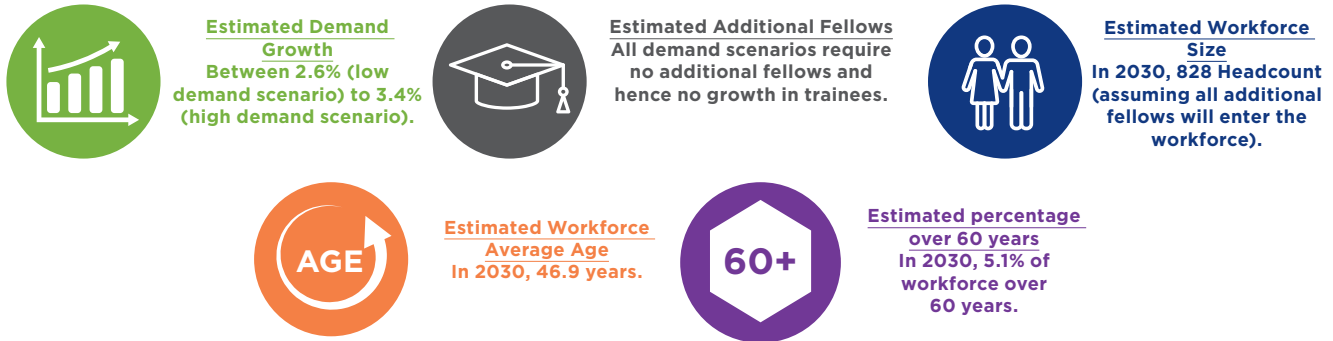
NSW Trainees as % of Australia 2017



Proportion female trainees in NSW 2017

## The Future in NSW – Workforce Planning to 2030

Workforce projections are provided for a low and high demand scenario. Where requirements for both scenarios are met without the need for additional fellows, the projected “No Growth” scenario workforce data is provided.



## Workforce Planning Priority and Assessment Framework



## Workforce Modelling Considerations

- Workforce modelling is based on current models of care. Any change in the models may impact on requirements.
- Any changes to current training programs will affect the workforce modelling outcome.
- Workforce modelling is based on current workforce hours profile by age co-hours. Any changes to hours worked by future clinicians will affect the model.
- There is an accepted error rate of plus or minus two per cent within workforce modelling.
- The model does not address any mal-distribution either by location (rural or regional) or sector (public or private).