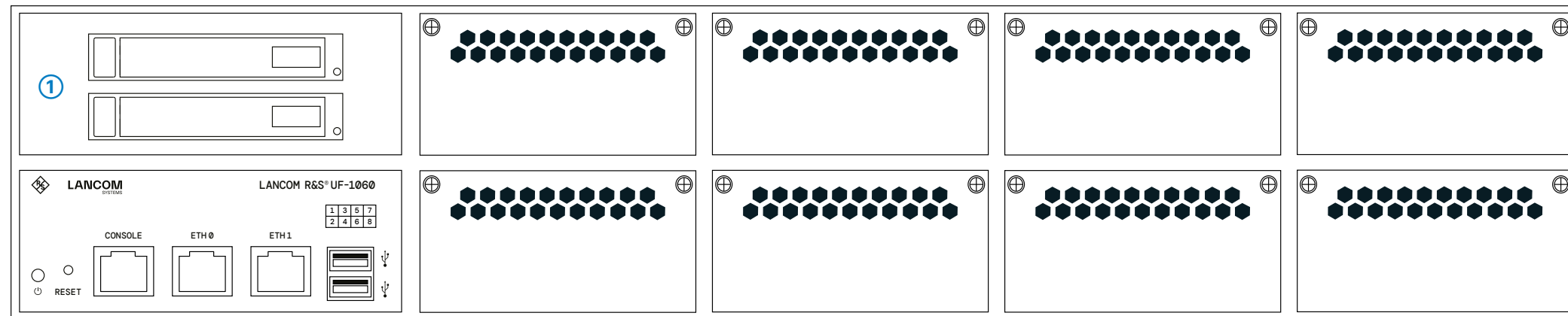
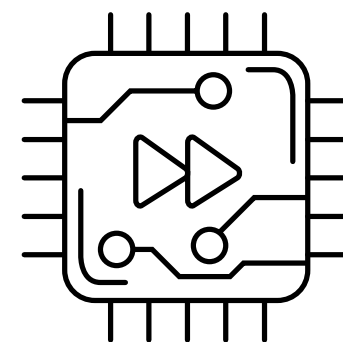


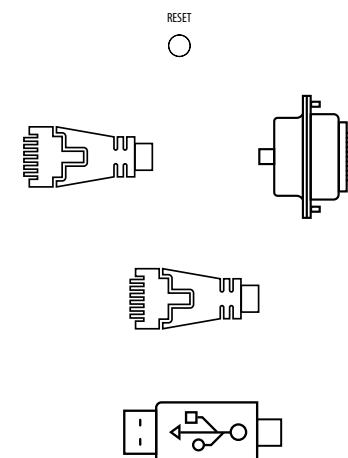
Hardware Quick Reference

LANCOM R&S®UF-1060



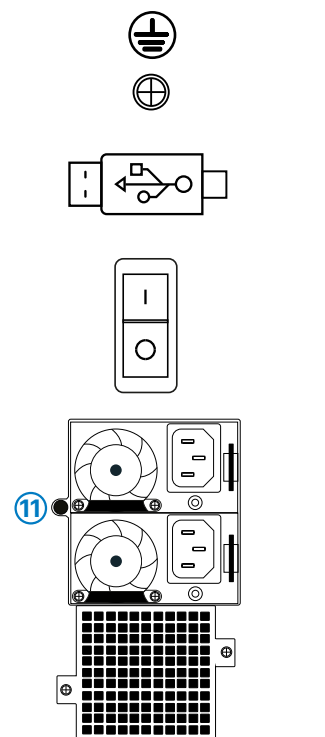
- ②
- ③
- ④
- ④
- ⑤

- ① **2 SSD slots**
For easy replacement of a defective SSD
- ② **RESET button**
Press the reset button to restart the device.
- ③ **Serial configuration interface RJ45 (CONSOLE)**
Maintenance interface for expert configuration. Not necessary for initial commissioning.
- ④ **TP Ethernet interfaces ETH0 - ETH1**
Connect the ETH0 - ETH1 TP Ethernet interfaces to additional network components using suitable Ethernet cables.
- ⑤ **USB 3.0 interfaces**
Interfaces for reinstallation of the device software. Not necessary for initial commissioning.
- ⑥ **8 slots for extension modules**
Slots for RJ45, SFP or SFP+ extension modules



- ⑥

- ⑦ **Grounding connection (rear panel)**
Screw for connecting a grounding cable
- ⑧ **USB 2.0 interface (rear panel)**
Interface for reinstalling the device software. Not necessary for initial commissioning.
- ⑨ **Mains switch (rear panel)**
Start up the device using the mains switch after you have connected the power supply.
- ⑩ **2 power supply modules (rear panel)**
Supply the device with power via both mains connections at the rear. Use the supplied power cables.
- ⑪ **Button for deactivating the audible alarm for power supply problems (rear panel)**
- ⑫ **4 fan modules (rear panel)**



Before initial startup, please make sure to take notice of the information regarding the intended use under www.lancom-systems.com/safety!

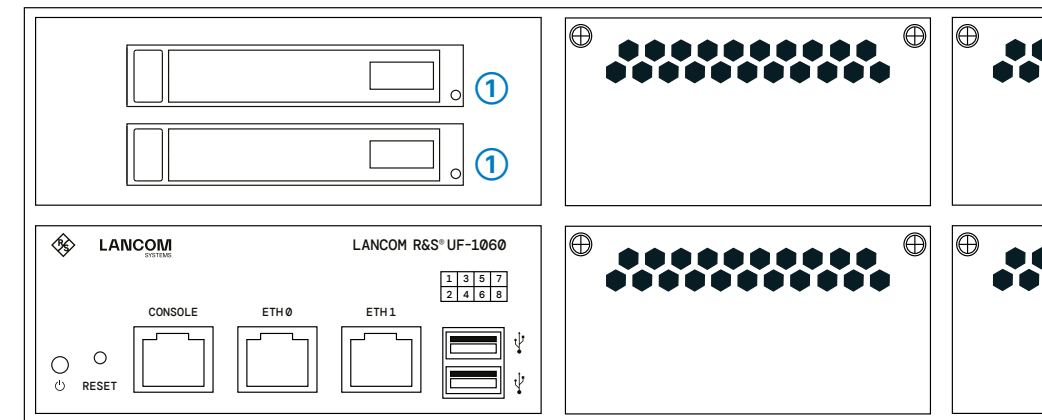
Operate the device only with a professionally installed power supply at a nearby power socket that is freely accessible at all times.



Please observe the following when setting up the device

- The mains plugs of the device must be freely accessible.
- Do not rest any objects on top of the device and do not stack multiple devices.
- Keep the device's ventilation slots clear of obstruction.
- Mount the device with the enclosed mounting material in a free 19" slot of an appropriate server rack.

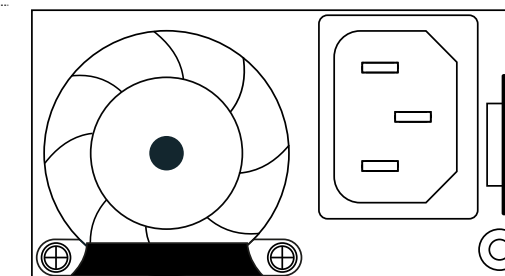
Mounting & connecting



- ②
- ③
- ③

- ① **LEDs SSD**
Off No SSD read / write access
Green SSD read / write access
- ② **LEDs Power**
Off Device switched off
Green Device ready and accessible
- ③ **LEDs ETH0 - ETH1 - TP Ethernet**
LEDs left - Link activity
Off no link detected
Green, permanently Link detected, no port activity
Green, blinking Link detected, port activity
LEDs right - Link speed
Off Link speed 10 Mbps
Green, permanently Link speed 1000 Mbps
Orange, permanently Link speed 100 Mbps

- ④ **LED Power supply module**
Green Status OK
Green, blinking Only 12V (module off) or module in redundant state
Orange (2 modules installed) Mains cable not plugged in or mains voltage lost; Second power supply unit with mains voltage
Orange (1 module installed) Critical event in the power supply that causes a shutdown
Orange, blinking Warning where the power supply continues to function



- ④

Hardware	
Power supply	2 power supply modules (100-240 V, 50-60 Hz)
Power consumption	Max. 550 W
Environment	Temperature range 0-40 °C; humidity 10-85 %, non-condensing
Housing	Robust metal housing 2 HU with pull-out rails for 19" rack mounting; Network connections on the front side
Fans	4 fan modules
Dimensions (mm)	440 x 88 x 603 (W x H x D) without mounting brackets
Interfaces	
ETH	2 10 / 100 / 1000 Mbps Gigabit Ethernet ports
USB	2 USB 3.0 ports (front panel); 1 USB 2.0 port (rear panel)
Console	1 RJ45 configuration interface
Package contents	
Accessories	2 IEC power cables 230 V; 1 serial configuration cable RJ45 - RS232; Extension rails for 19" rack mounting

Hereby, LANCOM Systems GmbH | Adenauerstrasse 20/B2 | D-52146 Wuersele, declares that this device is in compliance with Directives 2014/30/EU, 2014/35/EU, 2011/65/EU, and Regulation (EC) No. 1907/2006. The full text of the EU Declaration of Conformity is available at the following Internet address: www.lancom-systems.com/doc