



Overview: January 1, 2015—December 31, 2016

During the period between January 1, 2015 and December 31, 2016 the Legislative-Citizen Commission on Minnesota Resources (LCCMR):

- Submitted and received passage of two annual funding recommendations for the Environment and Natural Resources Trust Fund (ENRTF)—one each to the 2015 Legislature and 2016 Legislature—providing a total of \$84.2 million to 142 natural resources projects around the state.
- Issued two Requests for Proposal (RFP) to conduct selection process for funding recommendations to the 2015 and 2016 Legislatures.
- Received, reviewed, and evaluated 338 proposals requesting a combined \$257.3 million in response to the 2015 & 2016 RFPs. 144 proposals were selected for recommendation.
- Finalized recommendations to the 2017 Legislature of \$59.1 million for 69 projects around the state (bill introduction after December 31, 2016), which includes \$8.4 million remaining from the 2016 ENRTF funds.
- Conducted peer review process for 42 research projects recommended for funding to the 2015 Legislature (14) and 2016 Legislature (28).
- Provided administration and oversight for 365 open projects, representing approximately \$233.4 million in appropriations in various stages of their timelines, 77 of which reached completion in 2015-16, including projects begun in 2005 (1), 2010 (2), 2011 (19), 2013 (40), 2014 (13), and 2015 (2).
- Project site visits included several natural resources sites in southeast Minnesota and the Twin Cities metro area, including Kellogg-Weaver Dunes SNA, Gores Pool Wildlife Management Area (WMA), the University of Minnesota Landscape Arboretum and Minnesota Aquatic Invasive Species Research Center; and heard from numerous natural resources experts from both the public and private sector.



Funding for Exhibits at the University of Minnesota Landscape Arboretum, Tashjian Bee and Pollinator Discovery Center.

LCCMR Process

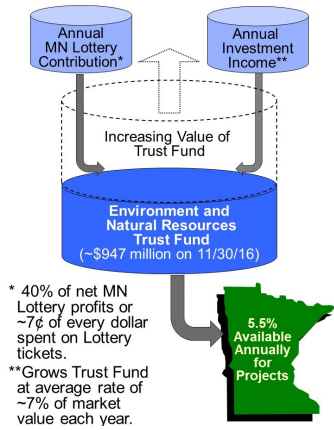
Contents:

About MN's Environment and Natural Resources Trust Fund	2	The LCCMR makes funding recommendations to the MN legislature for special environment and natural resources projects, primarily from the Environment and Natural Resources Trust Fund. These recommendations are the product of a competitive, multi-step proposal and selection process.	and ranks all proposals submitted. A selection of the highest ranked proposals are invited to present before the LCCMR. Finally, based on the total dollars available, a subset of the proposals are chosen to recommend to the legislature for funding.	response to the 2017 RFP and, from those, a total of 69 proposals were recommended for some portion of the \$59.1 million being recommended.
ML 2017: Project Recommendations	2			The LCCMR is made up of 17 members: 5 Senators, 5 Representatives, 5 citizens appointed by the governor, 1 citizen appointed by the House, and 1 citizen appointed by the Senate.
ML 2016: Projects Funded & Underway	2		The funding recommendations go before the MN House and Senate in the form of a bill, and upon passage the bill goes to the Governor to be signed into law. Funding becomes available to projects beginning July 1 of the next fiscal year.	
ML 2015: Projects Funded & Underway	3	Each funding cycle a Request for Proposal (RFP) is issued for funding priorities determined by the Commission based on its 6-year strategic plan and ongoing information gathering activities, including expert-led issue seminars and visits to natural resource sites around the state.	The LCCMR has oversight over projects funded. Projects must have a work plan approved, provide ongoing project updates, and deliver a final report upon project completion.	
Projects Completed: 01/01/15-12/31/16	3		For the recommendations to the 2017 Legislature, a total of 195 proposals requesting a combined \$159.6 million were received in	
25th Anniversary Highlights	3			
About LCCMR	4	The RFP is open to everyone with innovative ideas for environment and natural resources projects that could provide multiple ecological and other public benefits to Minnesota.		
2015-2016: Information Gathering	4			
2018: Request for Proposal	4	The LCCMR reviews, evaluates,		



Funding for ongoing Emerald Ash Borer research and control at the University of Minnesota and Minnesota Department of Agriculture.

About MN's Environment and Natural Resources Trust Fund



The Environment and Natural Resources Trust Fund (ENRTF) is a permanent fund in the state treasury established in the Minnesota Constitution through voter approval in 1988.

It holds assets that can be appropriated by law, "for the public purpose of protection, conservation, preservation, and enhancement of the state's air,

water, land, fish, wildlife, and other natural resources."

The ENRTF was created to provide a long-term, consistent, and stable source of funding for innovative activities directed at protecting and enhancing Minnesota's environment and natural resources.

The money in the ENRTF originates from a combination of

contributions and investment income. Forty percent of the net proceeds from the Minnesota State Lottery, or ~7 cents of every dollar spent playing the lottery, are contributed to the ENRTF each year. Once deposited, contributions become part of the principal balance and are invested in a combination of stocks and bonds to further grow the fund.

ML 2017: Project Recommendations (to begin July 1, 2017)

Approximately \$59.1 million is being recommended to the MN Legislature to fund 69 individual projects around the state.

Natural Resource Research and Analysis: ~\$11.6 million to advance our knowledge and provide strategies and recommendations for addressing issues relating to invasive species, water resources, pollinator, plants, and animal species conservation, habitat restoration, renewable energy, climate change, and chemicals of emerging concern.

Natural Resource Inventory, Monitoring, Mapping, and Planning: ~\$12.4 million to obtain critical information and implementation tools, including continuation of the County Geologic Atlas and Biological Survey, natural resource data

collection, compilation, and management for plants, wildlife, and ecosystems; surveying and conservation efforts for pollinators and biological species; local recreation and conservation planning; and detection and monitoring of invasive species and air quality, and planning for renewable energy.

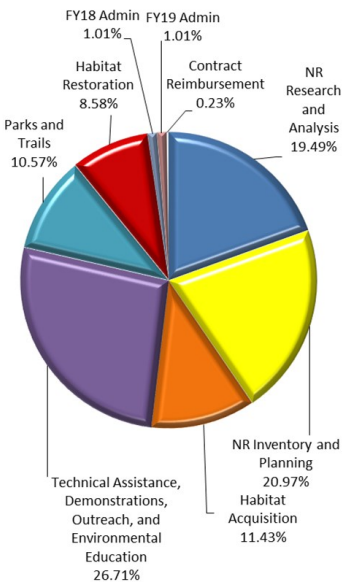
Terrestrial and Aquatic Habitat Acquisition: ~\$6.8 million for acquisition of an estimated 827 acres of habitat in a combination of fee title (492 acres) and prairie conservation easements (335 acres).

Technical Assistance, Demonstrations, Outreach, and Environmental Education: ~\$15.8 million for efforts that will engage and assist Minnesotans on topics including ecology, plants and wildlife, water resources, climate change, renewable energy, resource reuse, and habitat protection and restoration.

Parks and Trails Acquisition and Development: ~\$6.2 million for acquisition of ~404 acres in state and metropolitan regional parks and trails, development of state and local recreational sites, and construction of the Mesabi Trail in northern MN.

Terrestrial and Aquatic Habitat Restoration and Improvement: ~\$5 million for restoration and improvement activities on ~4,002 acres.

Other: ~\$1.3 million for FY 2018 (\$600,000) and FY 2019 (\$600,000) LCCMR administration and DNR contract agreement reimbursement services for projects by non-state entities (\$135,000).



Administration is for biennium and is 1.18% of the biennial dollars available for appropriation.

ML 2016: Projects Funded & Underway (MN Laws 2016, Chapter 186)

Approximately \$37.9 million was appropriated to fund 79 individual projects around the state.

Natural Resource Research and Analysis: Natural Resource Research and Analysis: ~\$15.8 million to advance our knowledge and provide strategies and recommendations for addressing issues relating to invasive species, water quality and conservation, land management; wastewater treatment, species conservation, agricultural practices, harmful algal blooms, and renewable energy.

Technical Assistance, Demonstrations, Outreach, and Environmental Education: ~\$4.7 million for efforts that will engage and educate Minnesotans on topics including invasive species, climate

change, ecology, plants and wildlife, pollinators, outdoor recreation, natural resource professions, water quality, renewable energy, and conservation.

Parks and Trails Acquisition and Development: ~\$2.5 million for acquisition of ~17 acres to create a new park in the City of Fergus Falls, a new kayak route near the City of Tower, and construction of the Mesabi Trail in northern MN.

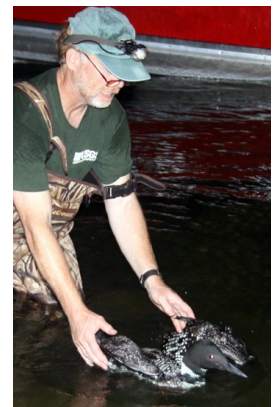
Natural Resource Inventory, Monitoring, Mapping, and Planning: ~\$7.6 million to obtain critical information and guide relevant decisions and efforts, including accelerating state spring inventory; completing the National Wetlands Inventory for Minnesota, surveying for pollinators and other species;

assessments of surface and ground water hydrological process; detection and monitoring of invasive species; and implementation of a variety of local planning efforts.

Terrestrial and Aquatic Habitat Restoration and Improvement: ~\$4 million for restoration and improvement activities on ~1,440 acres and 0.6 miles of shoreline.

Terrestrial and Aquatic Habitat Acquisition: ~\$3.2 million for acquisition of an estimated 210 acres of habitat in fee title and 500 acres of habitat in conservation easements.

Other: ~\$75,000 for ENRTF data management system improvements and \$135,000 for DNR contract agreement reimbursement services for projects by non-state entities.



Funding for loon and white pelican research with Minnesota Department of Natural Resources

ML 2015: Projects Funded & Underway (MN Laws 2015, Chapter 76)

Approximately \$46.3 million was appropriated to fund 65 individual projects around the state.

Natural Resource Research and Analysis: ~\$14.0 million to provide strategies and recommendations for addressing issues relating to invasive species, water resources, species conservation, habitat restoration, agriculture, forestry, renewable energy, climate change, and conservation easements.

Natural Resource Inventory, Monitoring, Mapping, and Planning: ~\$11 million to obtain critical information and guide relevant decisions and efforts, including acceleration of the Biological Survey, County Geologic Atlas, and Wetlands Inventory; natural resource data collection,

surveying and conservation efforts for pollinators; local recreation and conservation planning; and monitoring of invasive species.

Terrestrial and Aquatic Habitat Acquisition: ~\$7.1 million for acquisition of an estimated 1,314 acres of habitat in a combination of fee title (567 acres) and conservation easements (750 acres).

Technical Assistance, Demonstrations, Outreach, and Environmental Education: ~\$5.5 million for efforts that will engage and educate Minnesotans on topics including ecology, plants and wildlife, water resources, agricultural and forestry practices, renewable energy, resource reuse, and habitat protection and restoration.

Parks and Trails Acquisition and Development: ~\$4.4 million for acquisition of ~468 acres in state and metropolitan regional parks and trails, development of state parks and local recreational sites, and construction of the Mesabi Trail in northern MN.

Terrestrial and Aquatic Habitat Restoration and Improvement: ~\$3.2 million for restoration and improvement activities on ~2,663 acres.

Other: ~\$1.2 million for FY 2016 (\$536,000) and FY 2017 (\$536,000) LCCMR administration and DNR contract agreement reimbursement services for projects by non-state entities (\$135,000).



Mesabi Trail recommended 2017, M.L. 2016-09e, M.L. 2015-09j, and M.L. 2005-06m complete.

Projects Completed: January 1, 2015–December 31, 2016

Between January 1, 2015 and December 31, 2016, a total of 77 projects funded by the Environment and Natural Resources Trust Fund reached completion. This includes projects begun in 2005 (1), 2010 (2), 2011 (19), 2013 (40), 2014 (13), and 2015 (2). Major accomplishments resulting from the projects completed include:

Foundational natural resource data acquired and plans developed pertaining to wetlands, soils, groundwater, surface water, microbiology, ecosystem services, restoration evaluations, conservation easements, habitat protection, and ecology and species distributions around the state.

Expansion of parks and other outdoor recreation opportunities throughout the state, including 526 acres added to state parks, regional parks, and local natural areas and various improvements to state parks and 37.5 miles of the Mesabi Trail.

Habitat protection of approximately 2,196 acres of land and habitat through fee title (819 acres) and conservation easement (1,377 acres) acquisition.

Habitat restoration activities performed on over 3,122 acres.

Research and analysis furthering goals for invasive species control, ecosystem health, pollinators, bioenergy, species conservation, understanding climate change impacts, chemicals of emerging concern and water quality protection.

Technical assistance, outreach, and education efforts on habitat restoration, ecology, sustainable natural resource uses and practices, renewable energy and energy conservation, climate change, land conservation and stewardship, invasive species, conservation programs, outdoor recreation, and water resources.



Urban agriculture and park fee title acquisition M.L. 2013-04a complete.

25 Years of Project Highlights from the 25th Anniversary of Minnesota's Environment and Natural Resources Trust Fund

The LCCMR website provides more information about accomplishments highlights at: [25 Years of Project Highlights](#)

- Protecting Minnesota's Pollinators
- Minnesota Wildlife Benefitting from Habitat Corridors Partnership
- Protecting Minnesota from Invasive Species
- Engaging Minnesota Students and Families with the Mississippi River
- Impact of Deepwater Horizon Oil Spill on Minnesota's Loons and Pelicans
- Minnesota Biological Survey
- Minnesota State Parks and Recreation Areas
- Minnesota State Trails
- Research to Protect and Improve Minnesota's Water Quality
- Minnesota: a History of the Land
- Minnesota County Geologic atlas
- Minnesota Scientific and Natural Areas
- Minnesota Wildlife Benefitting from Metro Conservation Corridors Partnership
- National Wetlands Inventory for Minnesota
- Minnesota's Metropolitan Regional Parks
- Minnesota Soil Survey
- Research of Unique Organisms in Minnesota's Soudan Underground Mine
- Restoring Minnesota's Trout Streams
- Local Initiatives Grants for Minnesota Communities
- Minnesota Breeding Bird Atlas
- Engaging Minnesota Youth in Energy Conservation and Renewable Energy
- Understanding Minnesota's Lake Superior
- Minnesota Conservation Apprentice Academy
- Clean, Renewable Energy for Minnesota's future
- Improved Public Access to Minnesota a Waters



About LCCMR

The LCCMR is made up of 17 members (5 Senators, 5 Representatives, 5 citizens appointed by governor, 1 citizen appointed by House, and 1 citizen appointed by Senate). The function of the LCCMR is to make funding recommendations to the Minnesota Legislature for special environment and natural resource projects, primarily from the Environment and Natural Resources Trust Fund. These projects help maintain and enhance Minnesota's environment and natural resources. The LCCMR developed from a program initiated in 1963. Since 1963, over \$800 million has been appropriated to more than 1,800 projects recommended by the Commission to protect and enhance Minnesota's environment and natural resources.

Legislative-Citizen Commission on Minnesota Resources (LCCMR)

Room 65, State Office Building
100 Rev. Dr. Martin Luther King Jr. Blvd.
St. Paul, MN 55155

Phone: (651) 296-2406
TTY: (651) 296-9896 or 1-800-657-3550
E-Mail: lccmr@lccmr.leg.mn
Web: www.lccmr.leg.mn

LCCMR Staff

Susan Thornton—Director
Michael McDonough—Research and Planning Manager
Michael Varien—Project Analyst
Diana Griffith—Commission Assistant

 www.facebook.com/mnenrtf

 www.twitter.com/mnenrtf

Commission Members Serving During 2015-2016

Jeff Broberg (Co-Vice Chair)—Appointed by the House
Sen. Gary Dahms (Co-Vice Chair)
Sen. Kari Dziedzic
William Faber—Appointed by the Governor
Nancy Gibson (Co-Chair)—Appointed by the Governor
Rep. Tom Hackbarth
Bonnie Harper-Lore—Appointed by the Governor
Sen. John Hoffman
Gary Lamppa—Appointed by the Senate
Rep. Denny McNamara
Norman Moody—Appointed by the Governor
Rep. John Persell (Co-Chair)
Sen. David Tomassoni (Co-Chair)
Rep. Paul Torkelson (Co-Vice Chair)
Rep. Jean Wagenius
Sen. Torrey Westrom
Della Young—Appointed by the Governor

Information Gathering: Jan 1, 2015—Dec 31, 2016

In 2015-16, the LCCMR engaged in several activities that informed its priorities for the projects recommended for funding to the Minnesota Legislature. Natural resources sites around the state were visited:

- 2015 included a visit to southeast MN to learn about topics including water quality, invasive species, habitat protection and management, state and local parks, geology, and wildlife.
- 2016 included a visit to the University of Minnesota Arboretum, Tashjian Bee and Pollinator Discovery Center, Bee Research Facility, and Minnesota Aquatic Invasive Species Research Center (MAISRC) to learn about topics including pollinators, bees, and invasive species.

In addition to the presentations heard on site visits and 173 interactive presentations the LCCMR chose to hear on a spectrum of topics from project proposers responding to the RFPs during this period, the LCCMR also heard several presentations and expert-led issue seminars on topics including:

- Aquatic and terrestrial invasive species
- MN Buffer Law
- Moose Research and Avian Flu
- Harmful Algal Blooms
- Water Policy and Planning
- Updates from current and completed projects pertaining to State Parks and Trails, UMN technology transfer and patents, and restoration evaluation methodologies



Outdoor education with Wilderness Inquiry, Recommended 2017, M.L. 2014-09c, and M.L. 2013-07b

2018 Request for Proposal

The LCCMR issued its 2018 Request for Proposal (RFP) for funding on December 21, 2016. Proposals are due May 15, 2017.

This is for funding from the Environment and Natural Resources Trust Fund beginning July 1, 2018.

For FY 2019, approximately \$50 million is expected to remain available for project recommendations to the 2018 Minnesota Legislature.

The RFP is available at <http://www.lccmr.leg.mn>.



United States Army Corps of Engineer Lock and Dam Number 5, Minnesota City, invasive carp research with the University of Minnesota and Minnesota Department of Natural Resources.