

ManageEngine
ADManager Plus

Group Policy Management

www.admanagerplus.com



ADManager Plus Group Policy management

In terms of Group Policy management, ADManager Plus provides the following capabilities:

- GPO management.
- GPO link management.
- GPO reporting.

GPO management

Using ADManager Plus' GPO management feature, admins can quickly create and manage GPOs in their organization.

Create GPOs

Creating GPOs and linking them with multiple AD nodes is far from a one-step task when using Microsoft's Group Policy Management Console (GPMC). With ADManager Plus, admins can use a single console to create a GPO and link it to multiple nodes all at once, as shown below in Figure 1.

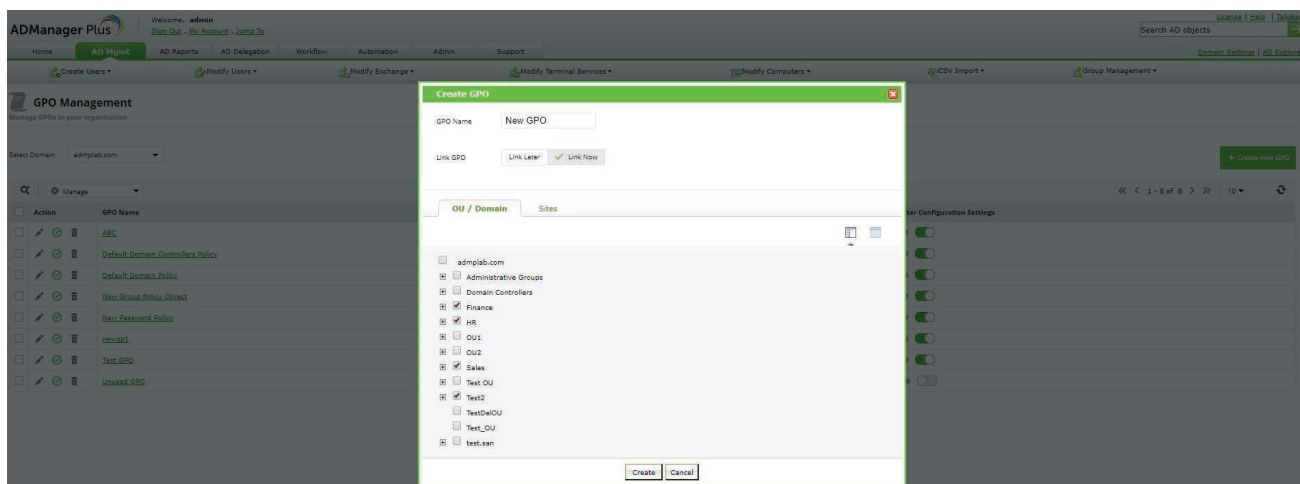


Figure 1. After entering a name for a new GPO, admins can link that GPO to a particular OU, domain, or site

Manage GPOs

Using ADManager Plus, admins can easily:

- **Edit GPOs.**
- **Enable or disable GPOs.**
- **Delete GPOs.**

Admins often have to create new GPOs or modify existing ones to meet the changing needs of their organization. With ADManager Plus, these actions can be easily performed. Using ADManager Plus' GPO management feature, admins can edit the Administrative Template settings for both user and computer configurations of GPOs.

Easily find a particular setting from amongst thousands of Administrative Template settings with AD Manager Plus' powerful search option. Unlike with GPMC, admins can quickly and easily perform management actions—such as enabling or disabling users and computer configuration settings, and deleting multiple GPOs at once—using ADManager Plus (Fig. 2).

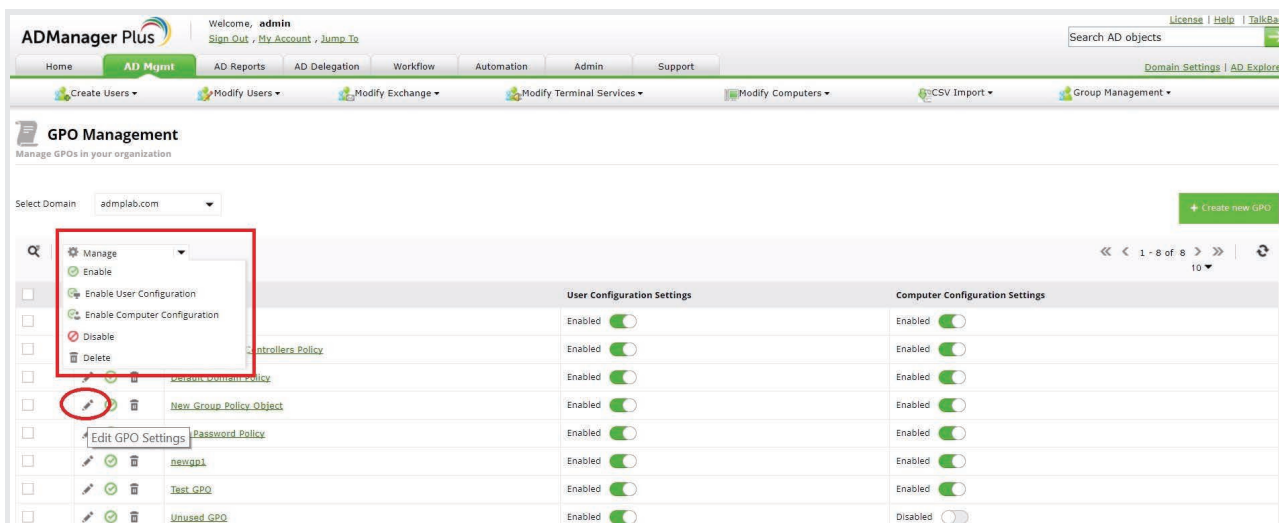


Figure 2. The list of GPO management actions within ADManager Plus.

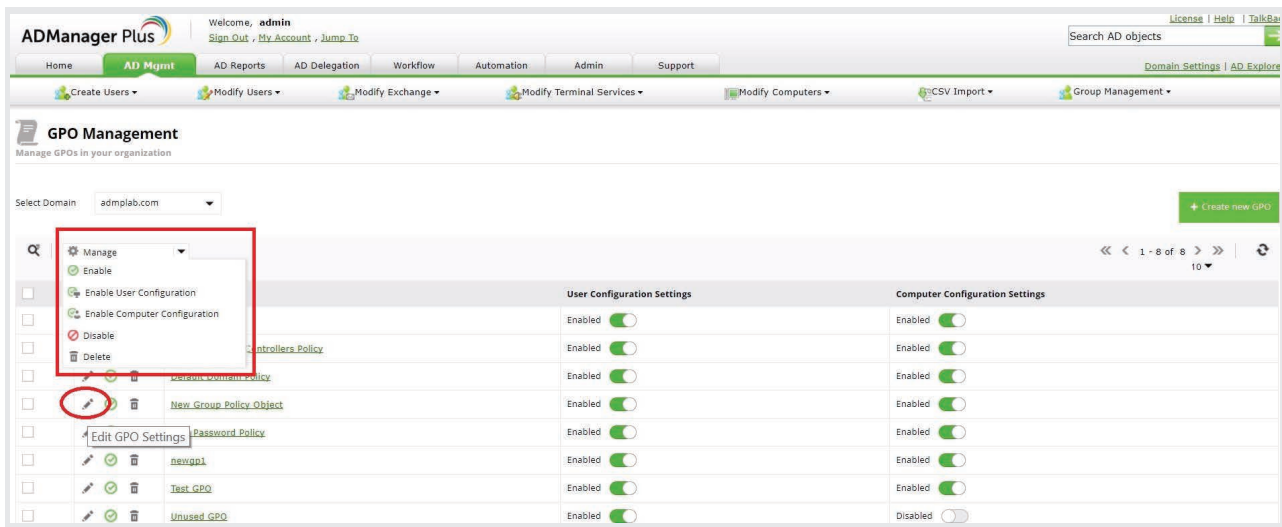


Figure 3. The Edit GPO Settings window in ADManager Plus.

GPO link management

Configuring a GPO that needs to be linked with multiple nodes is a repetitive and inefficient task. However, ADManager Plus makes GPO link management easy by allowing administrators to link GPOs to multiple nodes in a single click (Fig. 4).

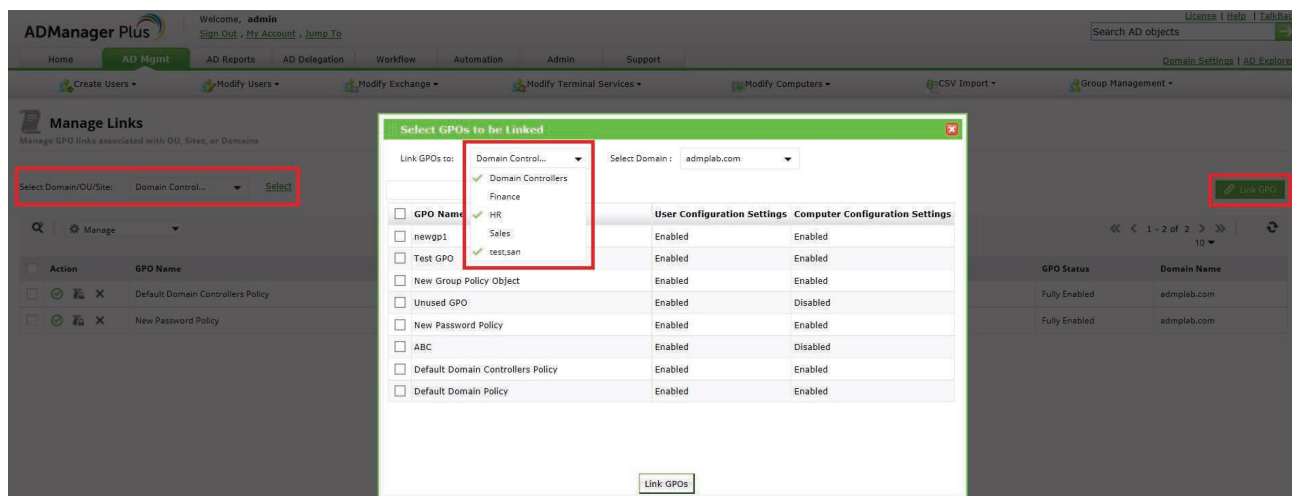


Figure 4. Linking multiple AD objects to GPOs at once.

Manage GPO links

An organization's policies can change fairly quickly; as these changes occur, admins are required to make corresponding changes in GPOs. To quickly and easily facilitate these changes, ADManager Plus offers the following features:

- Enable, disable, or remove GPO links.
- Enforce or remove enforcement options for GPO links.
- Block or unblock inheritance of GPO links.

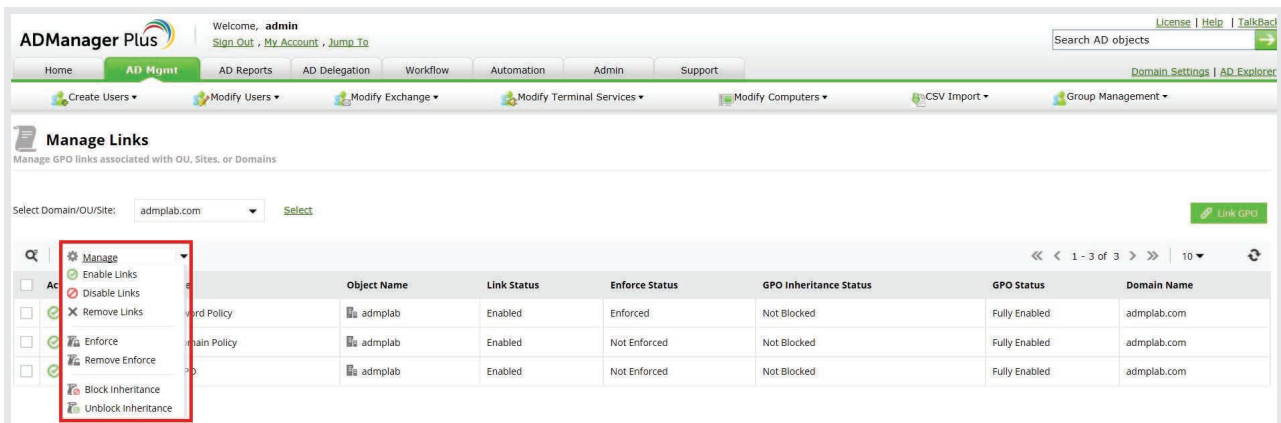


Figure 5. Various GPO link management options in ADManager Plus.

GPO reporting

ADManager Plus currently offers more than ten canned reports that provide information about every GPO and the AD objects they are linked to, recently created or modified GPOs, disabled GPOs, unused GPOs, and so on. As shown in Figure 6, all GPO Reports are listed under the AD Reports tab of ADManager Plus.

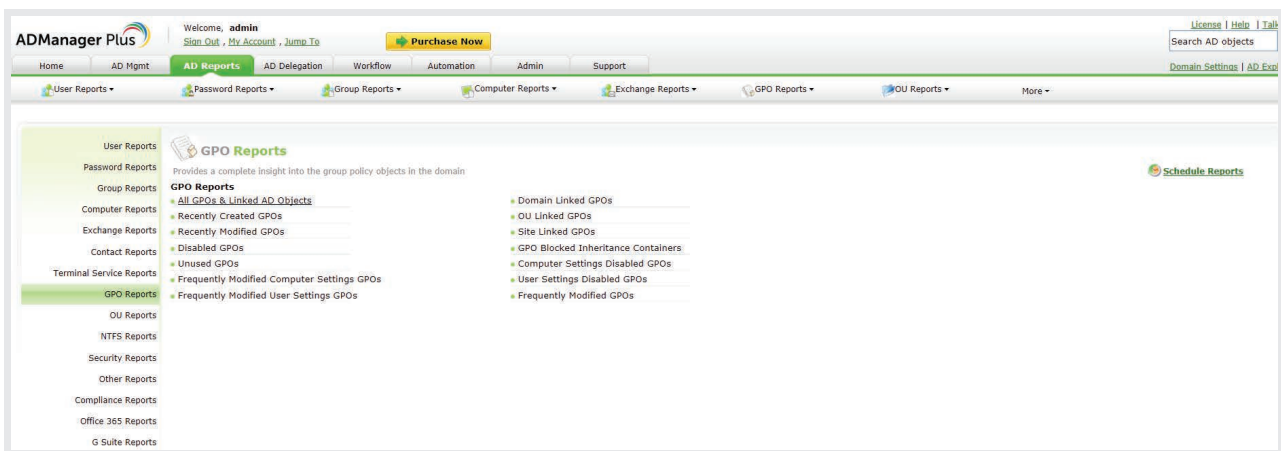


Figure 6. A complete list of GPO reports in ADManager Plus.

These reports offer admins multiple benefits, including identifying and deleting unlinked, empty, and disabled GPOs, reporting errors in GPO application, identifying impacted AD objects, and more.

Admins can completely automate the generation of reports, enabling them to adopt a "set it and forget it" approach. For example, once an admin schedules their required type of report, the report will be sent to the configured email addresses in the admin's choice of CSV, PDF, HTML, or XLSX formats.

Summary

In short, ADManager Plus offers the following benefits to users:

- Eliminates the need to install GPMC by offering a web-based tool.
- Allows users to link GPOs to multiple nodes at once.
- Includes provisions for unused GPO cleanup.

With a straightforward UI, ADManager Plus makes GPO management and reporting absolutely easy.

Our Products

AD360 | Log360 | ADAudit Plus | ADSelfService Plus | M365 Manager Plus | RecoveryManager Plus

ManageEngine
ADManager Plus

ManageEngine ADManager Plus is a unified management and reporting solution for Active Directory, Microsoft 365, Exchange, Skype for Business, and Google Workspace. With an intuitive, easy-to-use interface, ADManager Plus handles a variety of complex tasks and generates an exhaustive list of Active Directory reports, some of which are essential requirements to satisfy compliance audits. For more information about ADManager Plus, visit manageengine.com/ad-manager.

\$ Get Quote

↓ Download