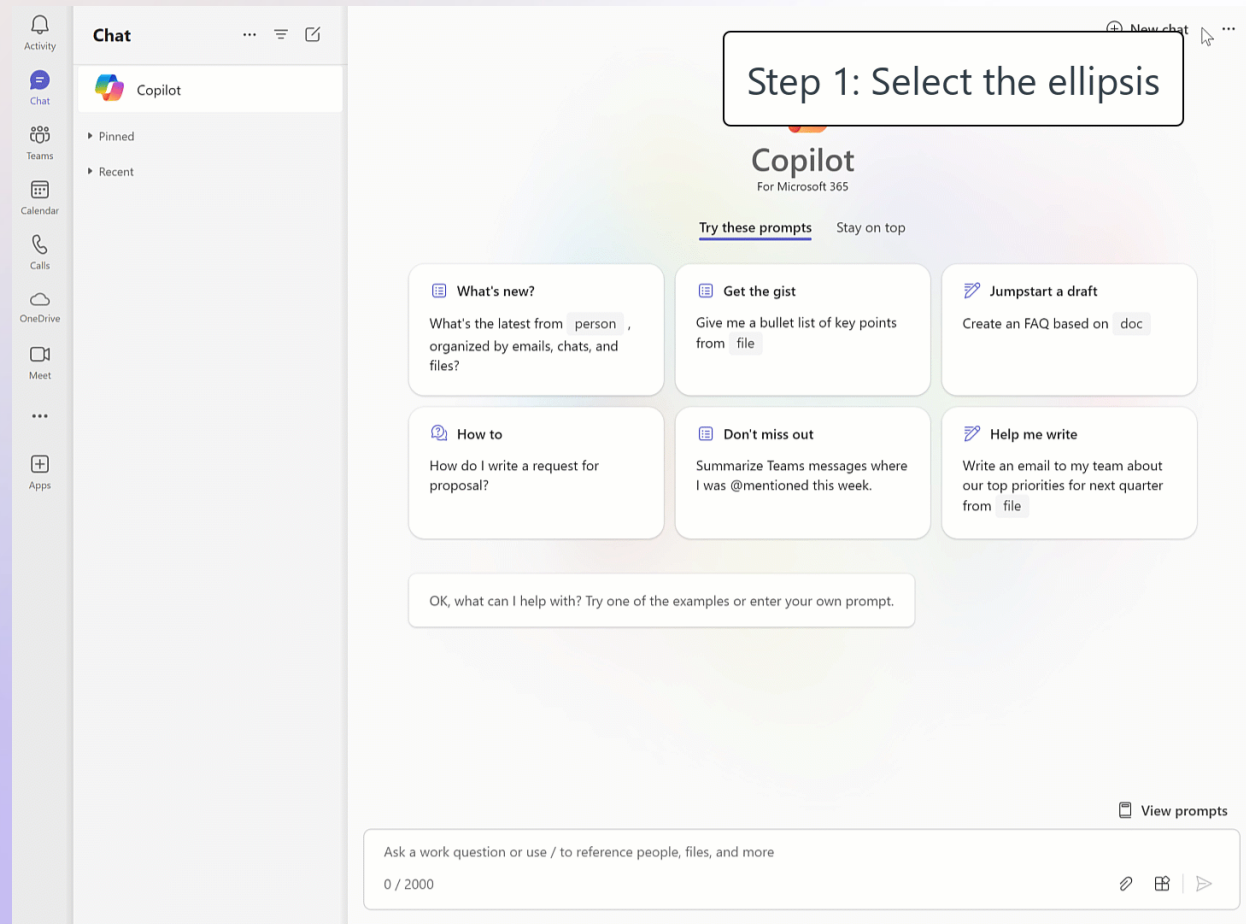


Copilot Employee Communications

Sample of real assets Microsoft Corporate used for its own Copilot for Microsoft 365 deployment and adoption. It consists in a series of weekly communications posted on various VIVA Engage employee communities

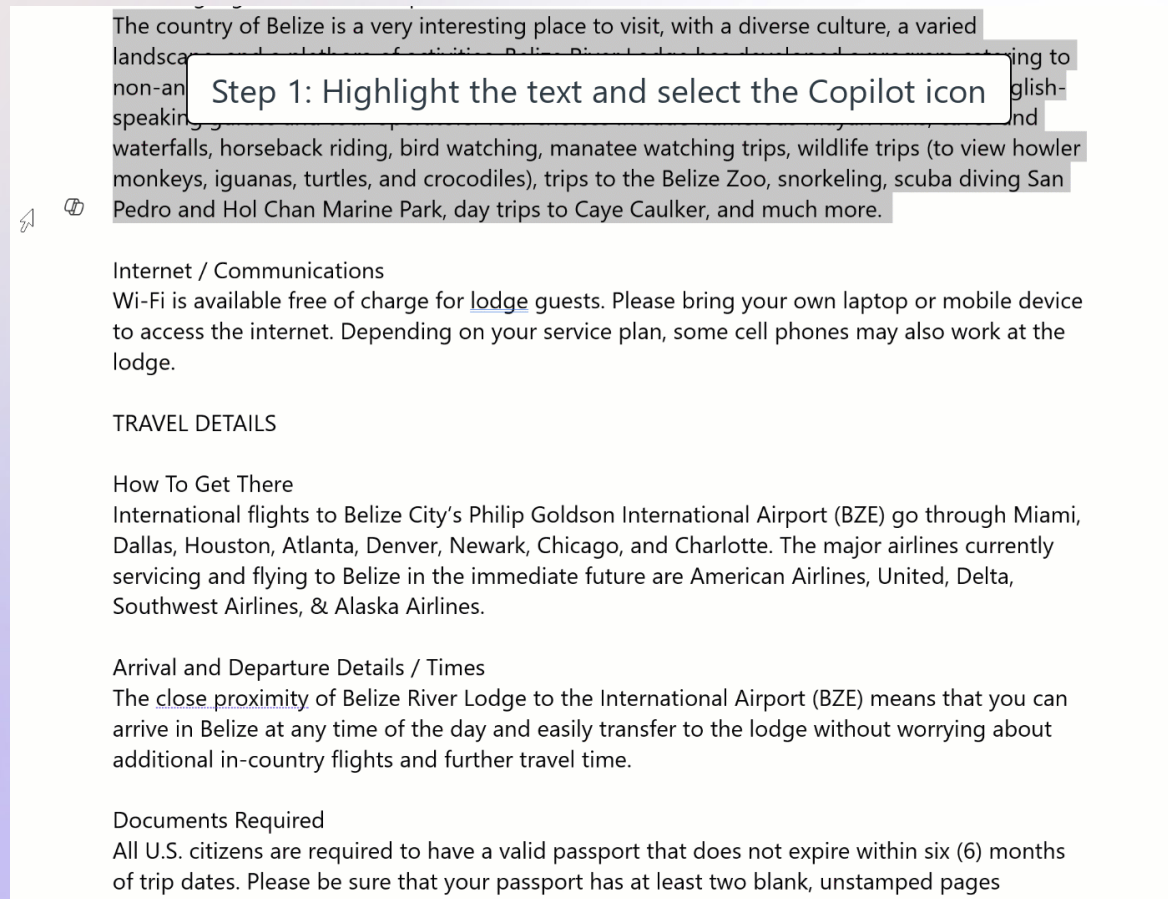
Did you know?

Did you know ... that you can view your **chat history** in Copilot? Give it a try and let us know what you think.



Did you know?

Did you know ... that Copilot in Word lets you change text into a table? Give it a try and let us know what you think.



The country of Belize is a very interesting place to visit, with a diverse culture, a varied landscape, and a rich history. Belize is a beautiful country with many things to see and do, including waterfalls, horseback riding, bird watching, manatee watching trips, wildlife trips (to view howler monkeys, iguanas, turtles, and crocodiles), trips to the Belize Zoo, snorkeling, scuba diving San Pedro and Hol Chan Marine Park, day trips to Caye Caulker, and much more.

Step 1: Highlight the text and select the Copilot icon

Internet / Communications
Wi-Fi is available free of charge for [lodge](#) guests. Please bring your own laptop or mobile device to access the internet. Depending on your service plan, some cell phones may also work at the lodge.

TRAVEL DETAILS

How To Get There
International flights to Belize City's Philip Goldson International Airport (BZE) go through Miami, Dallas, Houston, Atlanta, Denver, Newark, Chicago, and Charlotte. The major airlines currently servicing and flying to Belize in the immediate future are American Airlines, United, Delta, Southwest Airlines, & Alaska Airlines.

Arrival and Departure Details / Times
The [close proximity](#) of Belize River Lodge to the International Airport (BZE) means that you can arrive in Belize at any time of the day and easily transfer to the lodge without worrying about additional in-country flights and further travel time.

Documents Required
All U.S. citizens are required to have a valid passport that does not expire within six (6) months of trip dates. Please be sure that your passport has at least two blank, unstamped pages

Did you know?

Did you know ...that you can use Copilot to **organize your PowerPoint presentations**? Give it a try and let us know what you think.

The screenshot displays the Microsoft PowerPoint interface with the Copilot sidebar open on the right. The main slide is titled "Comoso Warranty Agreement" and has a large, multi-colored border. A callout box highlights the "Organize this presentation" option in the Copilot sidebar. The sidebar also shows other options like "Create presentation from file..." and "Summarize this presentation". The top ribbon includes tabs for File, Home, Insert, Draw, Design, Transitions, Animations, Slide Show, Record, Review, View, Add-ins, and Help. The bottom status bar shows "Slide 1 of 13" and "Accessibility: Good to go".

File Home Insert Draw Design Transitions Animations Slide Show Record Review View Add-ins Help

Clipboard Slides Font Paragraph Drawing Voice Sensitivity Add-ins

Copilot

I can chat, respond to questions, and help you draft this presentation.

Here are some things you can try...

- Create presentation from file...
- Summarize this presentation
- Organize this presentation

What is the Governing Law and Jurisdiction for the Warranty?

What does the Warranty cover?

Ask me anything about this presentation

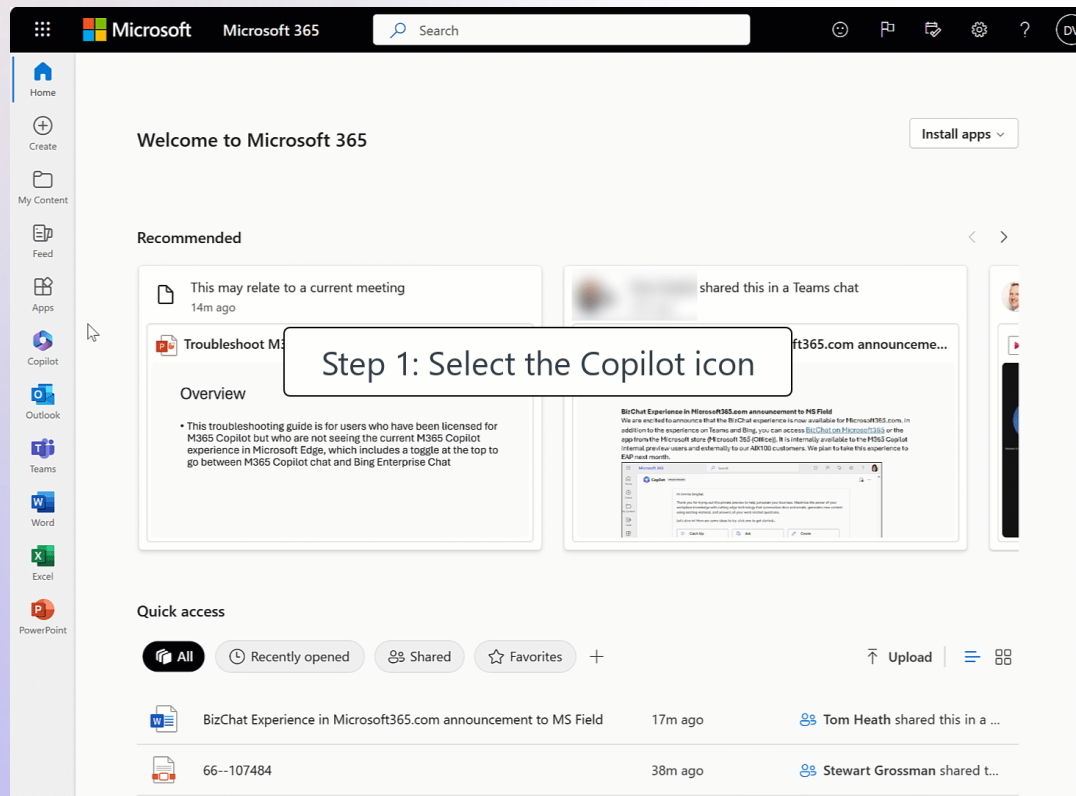
0/2000

This presentation was automatically generated by PowerPoint Copilot based on content found in this document.

Slide 1 of 13 Accessibility: Good to go

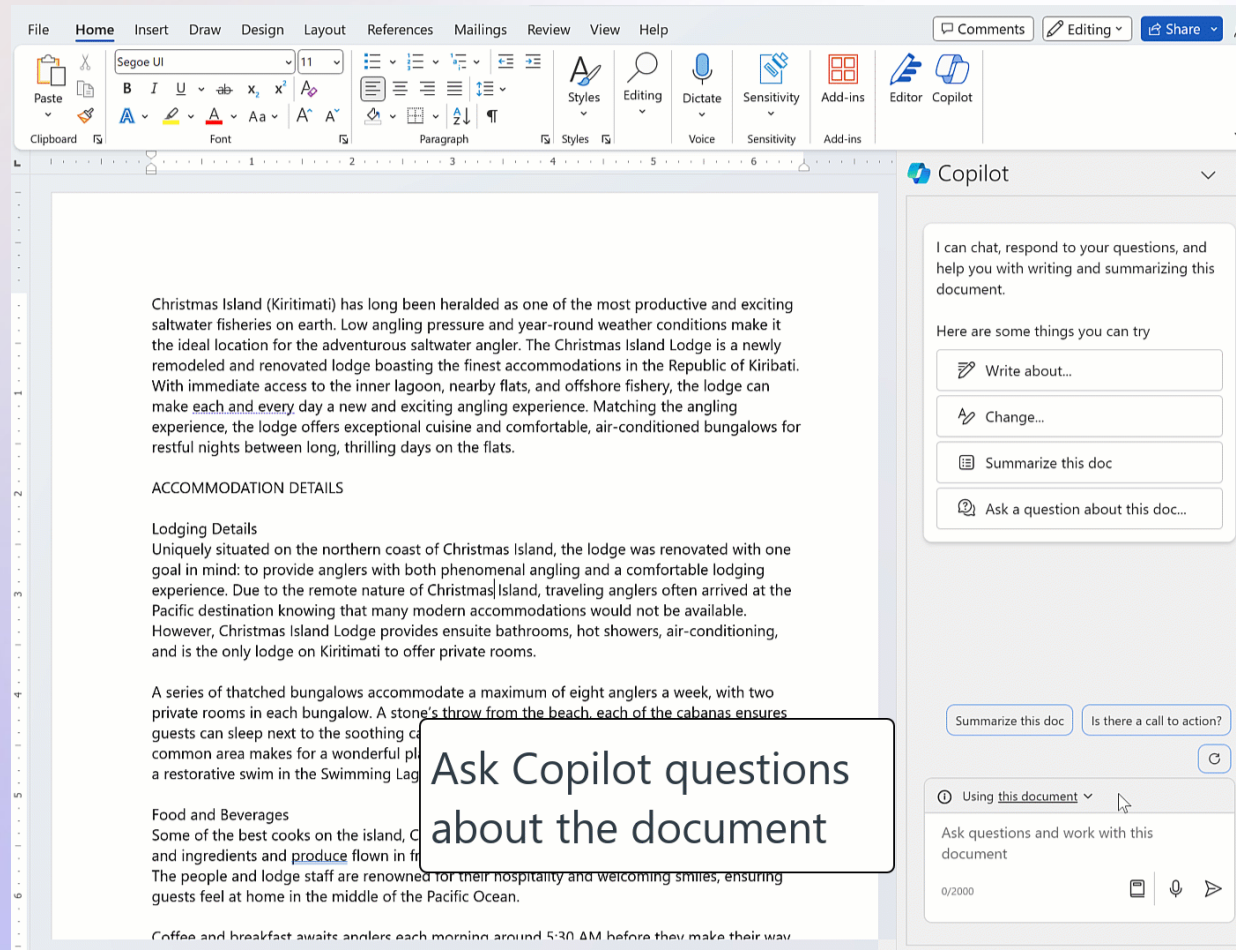
Did you know?

Did you know ...that the copilot experience is also available for www.microsoft365.com? Similar to the Experience you know, use the prompt guides, Sparkle icon, or ask questions directly (and follow-up on those questions). Give it a try and let us know what you think!



Did you know?

Did you know ... that you can ask Copilot questions about the document **AND** about people and files across your organization. Give it a try in Word, PowerPoint, and Excel, and let us know what you think.



The image shows a screenshot of the Microsoft Word interface. The ribbon at the top includes File, Home, Insert, Draw, Design, Layout, References, Mailings, Review, View, and Help. The Copilot sidebar is open on the right, displaying a chat interface. The main document content is about Christmas Island (Kiritimati) and its saltwater fisheries. A callout box points to the Copilot chat input area with the text "Ask Copilot questions about the document".

File Home Insert Draw Design Layout References Mailings Review View Help

Clipboard Font Paragraph Styles Editing Voice Sensitivity Add-ins Editor Copilot

Copilot

I can chat, respond to your questions, and help you with writing and summarizing this document.

Here are some things you can try

- Write about...
- Change...
- Summarize this doc
- Ask a question about this doc...

Summarize this doc Is there a call to action?

Using this document

Ask questions and work with this document

0/2000

Ask Copilot questions about the document

Christmas Island (Kiritimati) has long been heralded as one of the most productive and exciting saltwater fisheries on earth. Low angling pressure and year-round weather conditions make it the ideal location for the adventurous saltwater angler. The Christmas Island Lodge is a newly remodeled and renovated lodge boasting the finest accommodations in the Republic of Kiribati. With immediate access to the inner lagoon, nearby flats, and offshore fishery, the lodge can make each and every day a new and exciting angling experience. Matching the angling experience, the lodge offers exceptional cuisine and comfortable, air-conditioned bungalows for restful nights between long, thrilling days on the flats.

ACCOMMODATION DETAILS

Lodging Details

Uniquely situated on the northern coast of Christmas Island, the lodge was renovated with one goal in mind: to provide anglers with both phenomenal angling and a comfortable lodging experience. Due to the remote nature of Christmas Island, traveling anglers often arrived at the Pacific destination knowing that many modern accommodations would not be available. However, Christmas Island Lodge provides ensuite bathrooms, hot showers, air-conditioning, and is the only lodge on Kiritimati to offer private rooms.

A series of thatched bungalows accommodate a maximum of eight anglers a week, with two private rooms in each bungalow. A stone's throw from the beach, each of the cabanas ensures guests can sleep next to the soothing ca common area makes for a wonderful pl a restorative swim in the Swimming Lag

Food and Beverages

Some of the best cooks on the island, C and ingredients and produce flown in fr The people and lodge staff are renowned for their hospitality and welcoming smiles, ensuring guests feel at home in the middle of the Pacific Ocean.

Coffee and breakfast awaits anglers each morning around 5:30 AM before they make their way

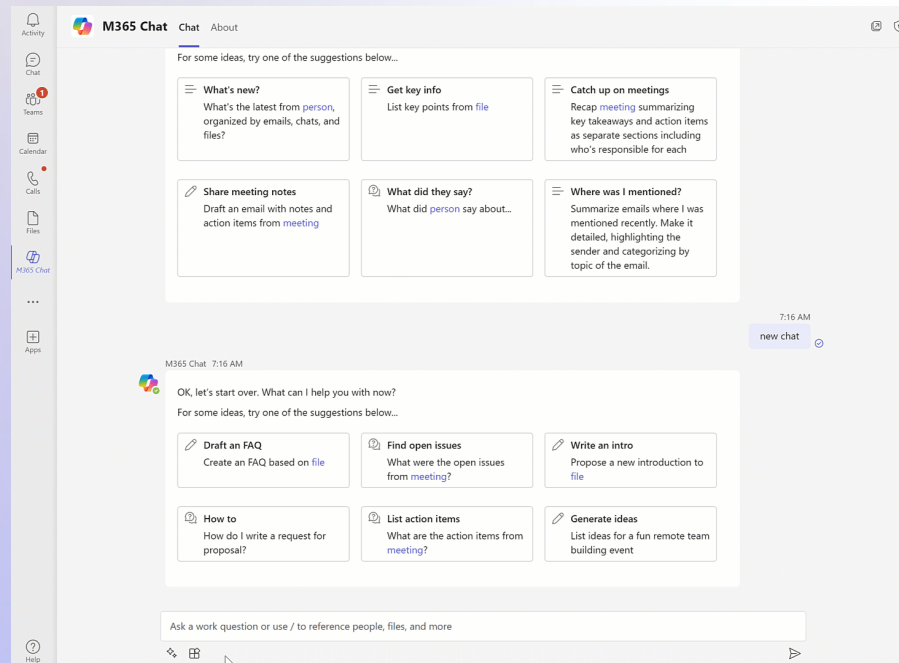
Did you know?

Did you know ... that you can use M365 Chat to quickly get caught up on work? Try the following prompts (and also explore some of the others) and let us know what you think.

Prompt guide > Catch up > Provide a detailed summary of my recent emails about...

Prompt guide > Catch up > What's the latest from person, organized by emails, chats, and files?

Prompt guide > Catch up > Summarize emails where I was mentioned recently. Make it detailed, highlighting the sender and categorizing by topic of the email.



Did you know?

Did you know ... you can enable web search in Microsoft 365 Chat with the **Web content** plugin? Give it a try and let us know what you think.

