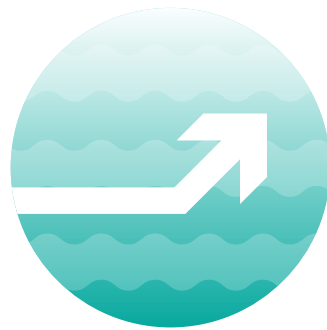


# Our long-term goals

A summary | **January 2019**

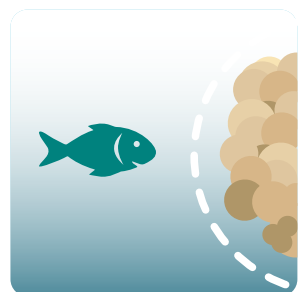
## Water



Water quality is maintained or improved



Water quality meets statewide goals



Pollution to Minnesota surface waters and groundwater is reduced or prevented

## Land



Solid waste is managed to conserve materials, resources, and energy



Contaminated sites are managed to reduce risks to human health and the environment and allow continued use or reuse.

## Air



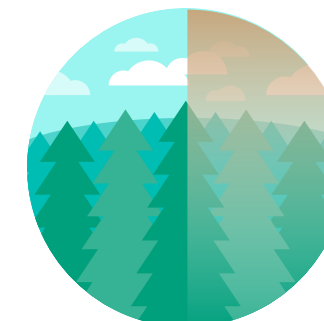
Ensure ambient air quality is better than air quality standards and benchmarks



Reduce Minnesota's contribution to global mercury levels



Reduce Minnesota's contribution to global concentrations of greenhouse gases



Reach natural visibility conditions in Minnesota's national parks and wilderness areas

## Cross Agency



Disproportionate negative impacts from pollution are reduced or prevented.

### Our mission

Protect and improve the environment and human health

### Our vision

MPCA is a national leader in delivering services that support healthy people and ecosystems, and a thriving economy