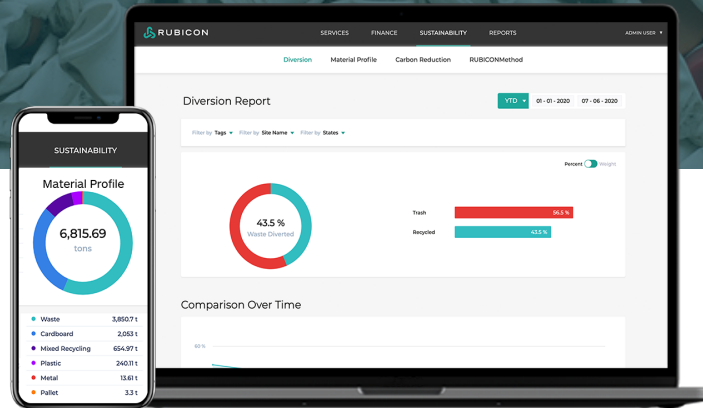




SUSTAINABILITY REPORTING

Understanding your business's environmental impact

EPA WARM vs Emission Factors Hub



In RUBICONConnect™, customers have the ability to understand their environmental footprint as it relates to waste. Rubicon uses two resources from the Environmental Protection Agency (EPA) to help customers with their reporting and decision-making data needs: EPA WARM and EPA Emissions Factors Hub's Waste Emission Factors.

Resource 1: EPA WARM

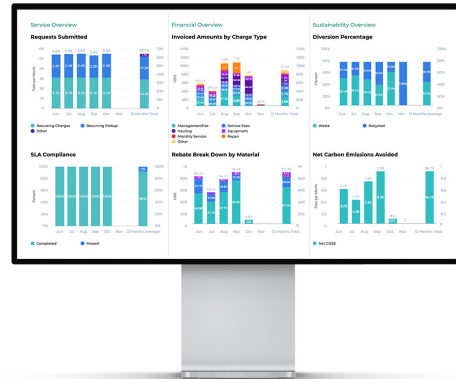
Rubicon provides customers with their net carbon emissions avoided. We calculate this number based off EPA WARM, which is a calculation tool for organizations to understand the emissions impact from different waste management practices. EPA WARM takes a baseline scenario and compares it against an alternative waste management practice like source reduction, recycling, anaerobic digestion, combustion (WTE), composting, and landfilling. It essentially answers the question of “How much carbon am I avoiding by recycling instead of landfilling this material?”

EPA WARM v15 provides us with an emissions factor based on the material type and disposal method, which is the MTCO₂e/ton of material. That emissions factor is multiplied by the total tonnage to determine emissions associated with that material's disposal.

The WARM emissions avoided is meant to support GHG-based decision making for materials management and will appear as a negative number to signify emissions avoided.

Resource 2: EPA Emission Factors Hub

Rubicon provides customers with their Scope 3 Category 5 Waste Generated in Operations emissions using the EPA's Emission Factors Hub's waste emissions factors. This total represents the carbon emissions from the disposal and treatment of waste generated in each customer's owned or controlled operations.



The carbon emissions are used to support voluntary reporting under the GHG Protocol Corporate Accounting and Reporting Standard. The total emissions will be positive and does not factor in any emissions avoided, or negative emissions, through landfill diversion practices. If you are completing a greenhouse gas emissions inventory, you should use this number to report.

Please note that any numbers in RUBICONConnect only represent materials and data for which Rubicon manages and may not be encompassing of your total waste operations.

Source: https://www.epa.gov/sites/default/files/2020-04/documents/guidanceefwastefactors_vs_warm.pdf

