

# Choosing the right dumpster will help keep costs down and efficiency up.

## Front Load Dumpsters

Front load dumpsters are the ideal option for long-term commercial use. These bins have an opening so you can toss trash bags through a top or side door, and are typically serviced specific days of the week.

Add-on options are available depending on your business needs. For example, **lock bars** are available to prevent others from using your dumpster illegally, and **caster wheels**<sup>1</sup> are a good option for businesses in cities with tight alleyways, as they make the container more mobile.

<sup>1</sup>Casters available up to 4-yard dumpsters



### 2-Yard

Dimensions: 3x3x6 ft

- This container size is ideal for small volume businesses and those with limited space, like small restaurants and offices.
- Holds around 12 bags (32 gallons each).



### 3-Yard \*

Dimensions: 4x3.4x6 ft

- This container size is ideal for small volume businesses and those with limited space, like small restaurants and offices.
- Holds around 18 bags (32 gallons each).

*\* Rubicon does not service 3-Yard dumpsters to small/medium businesses.*



### 4-Yard

Dimensions: 4x4.5x6 ft

- The 4-yard works well for medium sized restaurants, clinics and retail stores.
- Offices with up to 50 employees should consider the 4-yard.
- Holds around 28 bags (32 gallons each).



### 6-Yard

Dimensions: 6x4.5x6 ft

- Medium to large retail stores, clinics, restaurants and offices with up to 100 employees will likely need the 6-yard.
- Holds around 42 bags (32 gallons each).



### 8-Yard

Dimensions: 6x6x6 ft

- Our largest front load size, the 8-yard, is a perfect fit for large businesses like high volume restaurants and offices with up to 250 employees.
- Holds around 56 bags (32 gallons each).

Visit [Rubicon.com/get-a-quote/](https://www.rubicon.com/get-a-quote/) to get started keeping costs down and efficiency up.

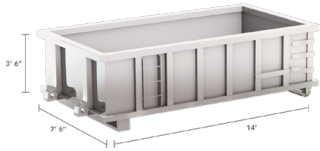
© 2022 Rubicon Technologies, Inc. All rights reserved.

If your business is undergoing construction, or churning out large amounts of waste and recyclable materials, **explore the various roll-off sizes available.**



## Roll-Off/Open Top Containers

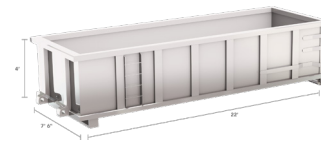
Roll-offs, or open top containers, are designed for industrial businesses or large temporary projects like landscaping work or construction. **This solution is ideal for high volume businesses and those with temporary waste removal needs.**



### 10-Yard

Dimensions: 3.5x7.5x14 ft

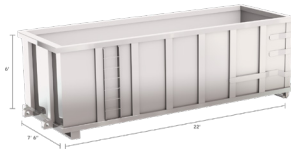
- The smallest open top container size available, 10-yards are typically used by small offices or construction sites.



### 20-Yard

Dimensions: 4.5x7.5x22 ft

- Similar to the 10-yard open top container, this size is most often used by small office buildings or for small remodel projects.



### 30-Yard

Dimensions: 6x7.5x22 ft

- This is the most common open top size and is often used for either construction debris trash or recycling.



### 40-Yard

Dimensions: 8x7.5x22 ft

- This container is very tall, so it is used only if the size is necessary or if the business is throwing waste off a dock directly into the container.

We have two tote sizes available for our customers in close quarters.

### Totes/Wheel-carts

No, we're not talking about handbags here. In the world of waste, a **tote** is a container for very tight spaces—typically located in very dense urban areas.

*Bonus:* You don't need a truck or any special equipment to move these around yourself. Totes have wheels so they are easy to maneuver.



#### 64-Gallon

Dimensions: 2.49x2x2.65 ft.

- This container size is ideal for minimal volume businesses and those with very limited space, like coffee shops and banks.
- Holds around 4 bags (32 gallons each).
- Dimensions: 2.49x2x2.65 ft.



#### 96-Gallon

Dimensions: 3.6x2.48x3 ft.

- This container size is ideal for minimal volume businesses and those with very limited space, like coffee shops and banks.
- Holds around 6 bags (32 gallons each).
- Dimensions: 3.6x2.48x3 ft.