

Fusion to YASWA software installation

June 11th 2018

The application is for automated upload of antibody screen-test data from local Fusion-software to YASWA.

The upload can be used for 'Luminex mixed assay' and 'Luminex single antigen bead assay'. For the latter one antibody specificities concluded in final assignment + MFI values will be transferred.

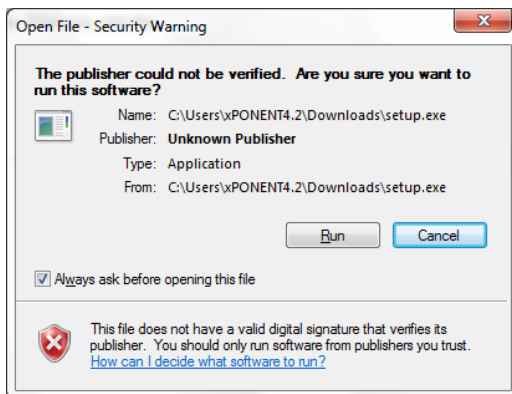
The following instructions are a onetime initial installation procedure. Help from it staff might be needed.

1. Launch the installation file by clicking here:

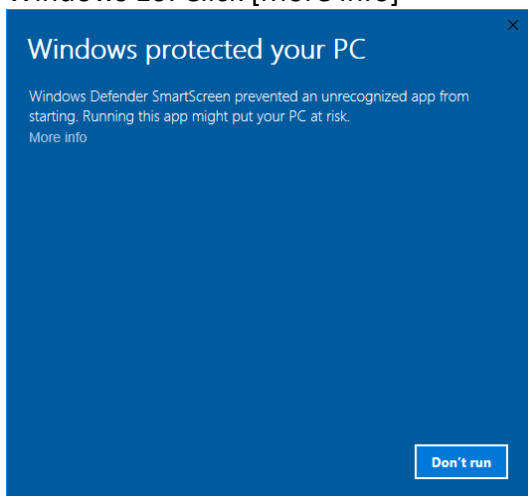
https://sc40.scandiatransplant.org/fusion_files/setup.exe

2. Approve installation by overriding security warnings. This will appear in various ways depending on windows-version:

Windows 7: Click Run

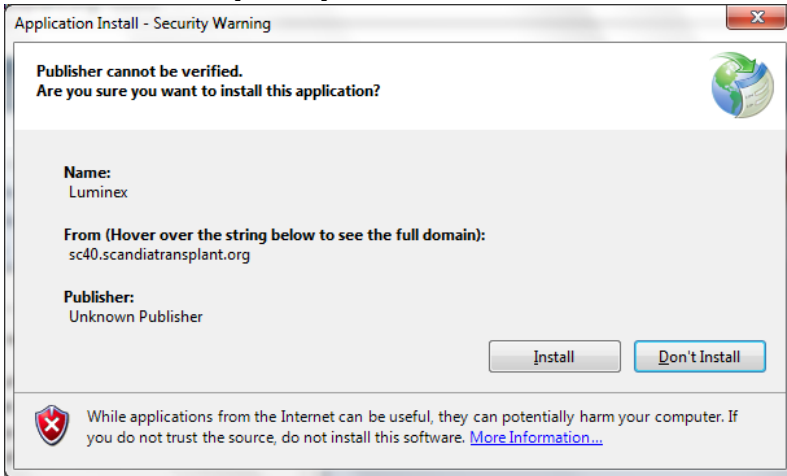


Windows 10: Click [More Info]

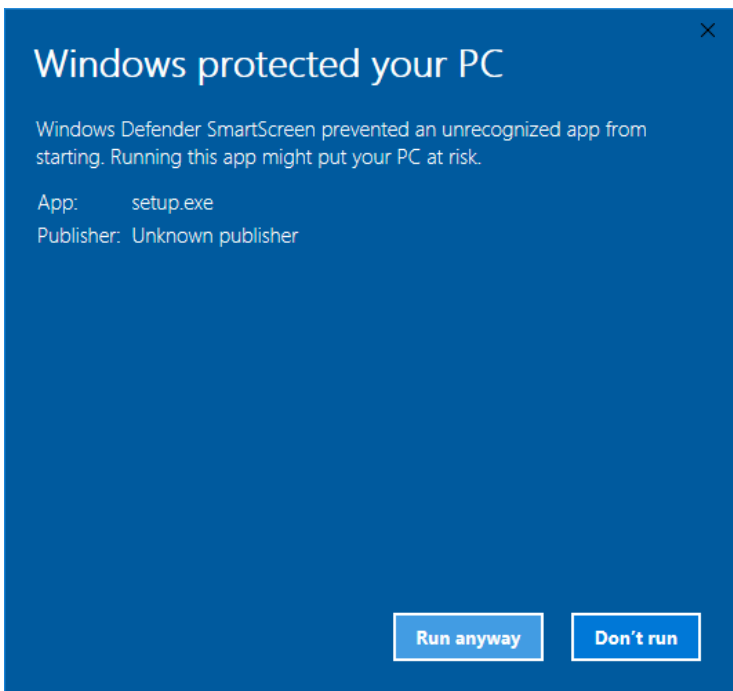


3. Ignore security warning

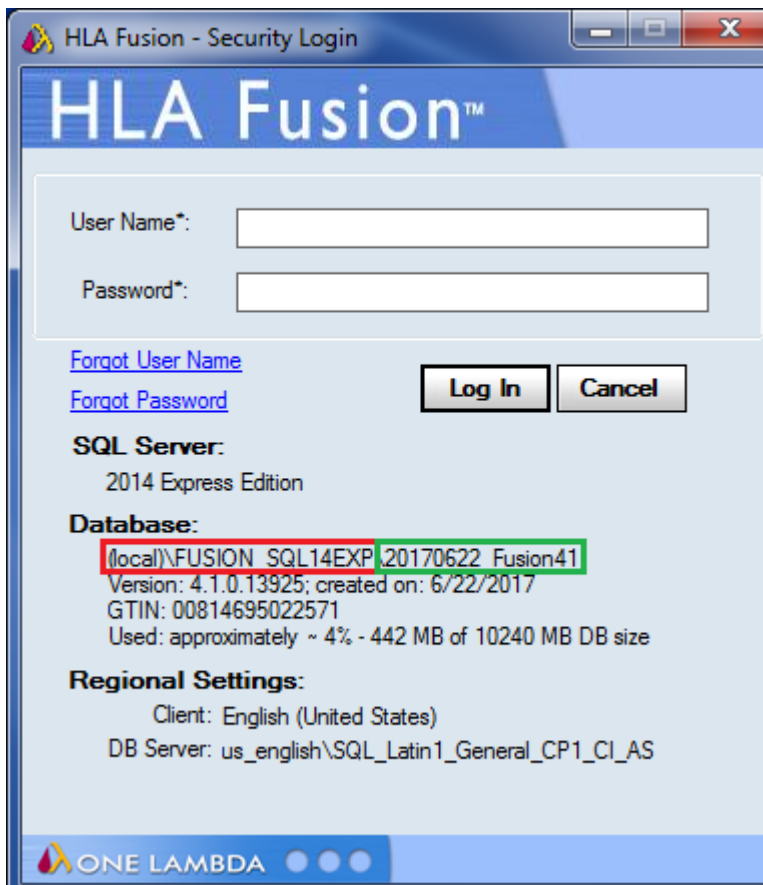
Windows 7: Click [Install]



Windows 10: Click [Run anyway]



4. Before initial configuration, please open local Fusion-software



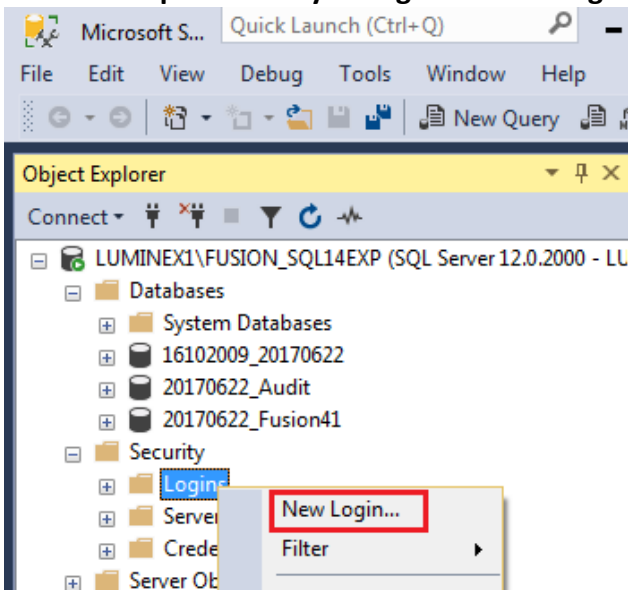
5. Note the Database settings (above); i.e. (local)\FUSION_SQL14EXP and 20170622_Fusion41

6. The next step might require help from it-staff and definitely requires [SQL Server Management Console]

6.1 On the server running the actual SQL Server Database open [SQL Server Management Console]

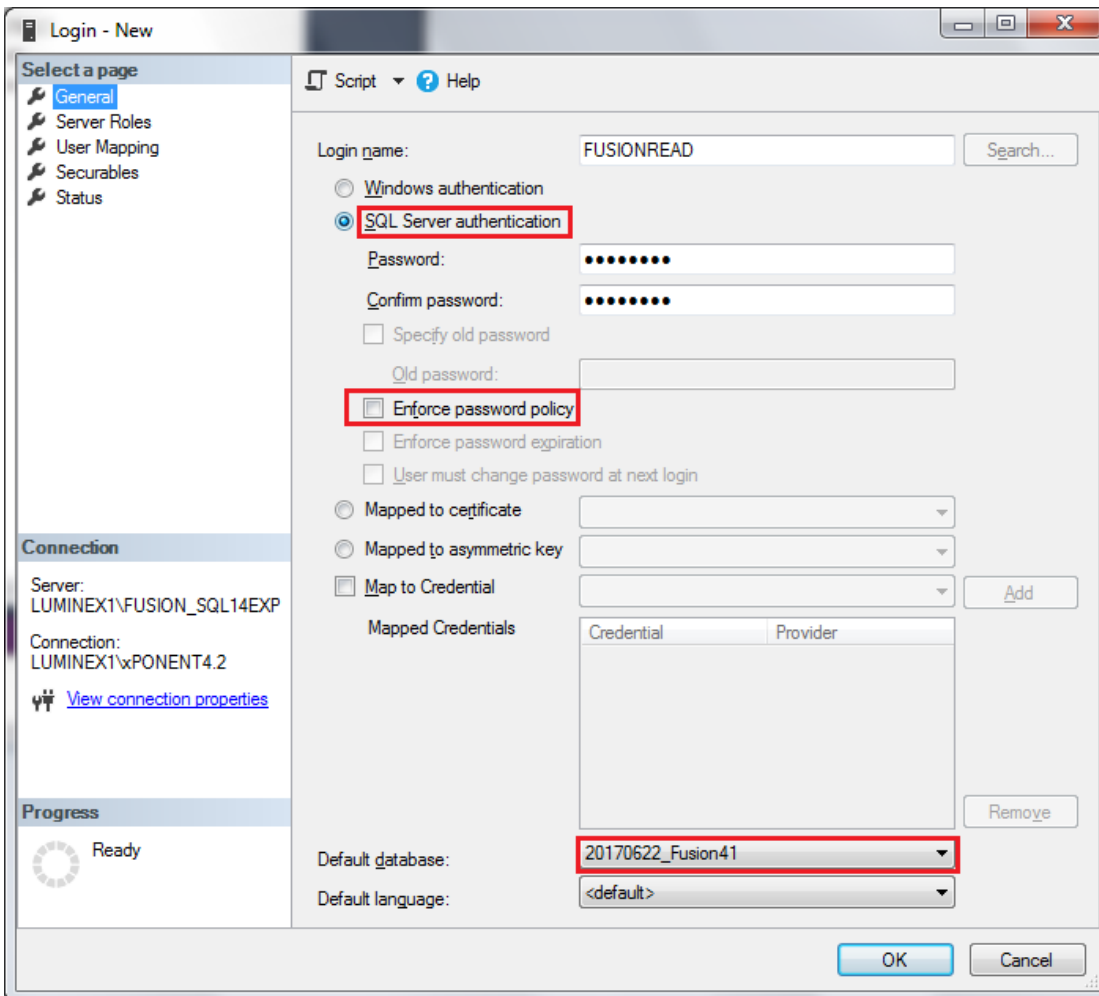
6.2 Connect to the FUSION database; e.g. (local)\FUSION_SQL14EXP

6.3 ... and open Security -> Logins -> New Login ...

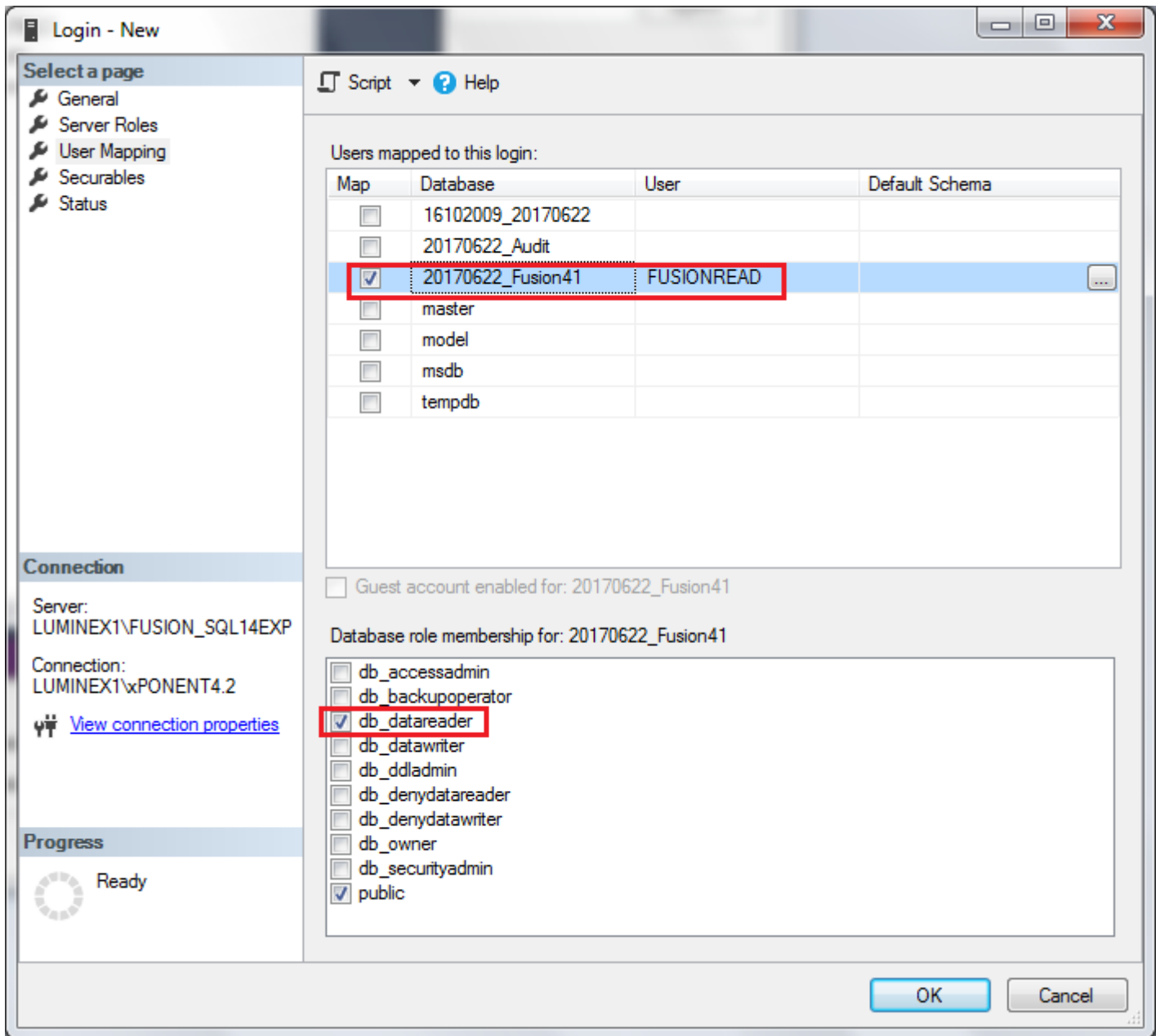


7. Create a new user (e.g. FUSIONREAD) using the settings outlined in red below

Remember the chosen password, which must be used in step 9 below



8. Attach the user to the fusion database as outlined in red:



9. Setup initial configuration (ignore this when reinstalling) by copying settings from Fusion-software (step 4 above)

... as well as your newly created database-user (step 7)

```
FUSION <-> YASWA version 1.0
Sqlserver-instance:
Database-name:
Fusion username:
Latest sctp-sync: Never
Latest step-sync: Never
YASWA-Test not connected | FUSION not connected

Configure connection to FUSION
Fusion sqlserver-instance [e.g. <local>\SQLEXP2014]: <local>\FUSION_SQL14
Fusion database-name [e.g. 20170622_Fusion41]:
Fusion username [e.g. FUSION_USER]: FUSION_READ

Enter your FUSION-password [i.e. for the db-login: FUSION_READ]:
```

10. Installation is complet

11. If updates are made, you will automatically be notified when starting the application. It is important to answer 'Yes' to update the application.