

**ANNEX A TO APPENDIX 19**  
**(FLOOD RESPONSE PLAN)**  
**TO THE SOUTH CAROLINA EMERGENCY OPERATIONS PLAN**

---

**I. PURPOSE**

Supplement the South Carolina Emergency Operations Plan (SCEOP) and Appendix 19, Flood Response Plan, by establishing planning considerations for a river basin wide flood event similar to Hurricane Matthew in 2016 and Hurricane Florence in 2018.

**II. SCOPE**

- A. The Pee Dee River Basin Annex highlights the population and infrastructure located in the 500-year floodplain by affected county.
- B. This annex focuses on the effects of river flooding in the 14 counties located in the basin.

**III. FACTS AND ASSUMPTIONS**

A. Facts

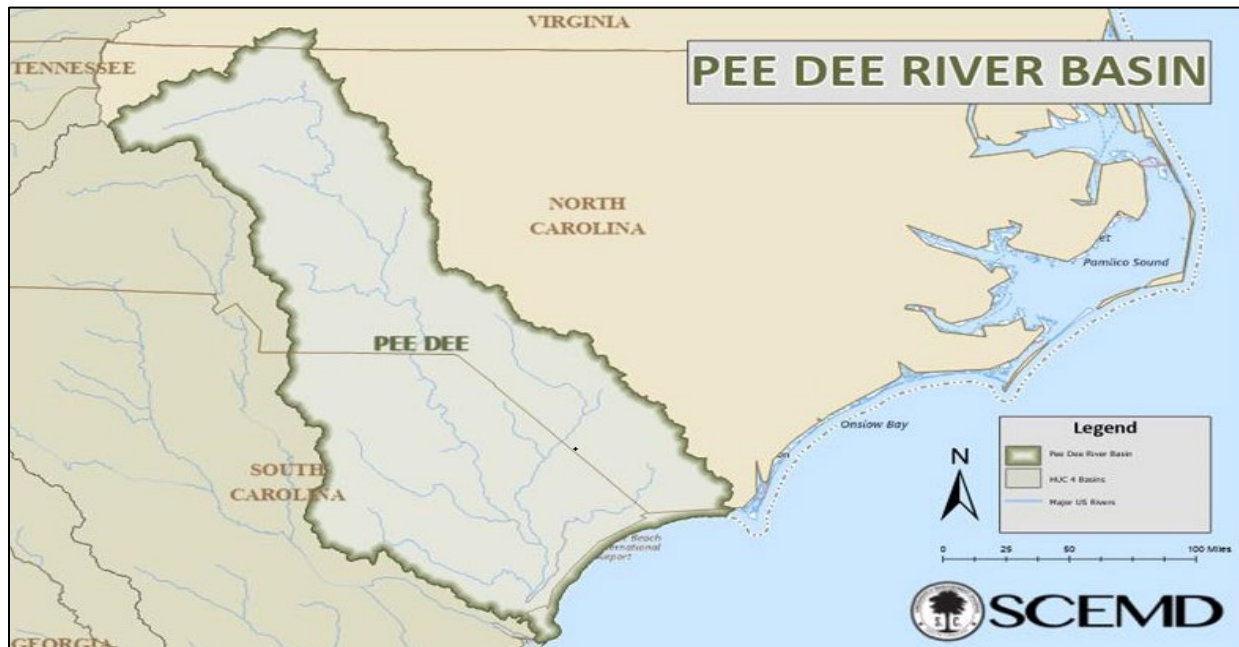
- 1. River flooding in the Lumber River system in North Carolina will lead to flooding in the Pee Dee River Basin in South Carolina.
- 2. Numerous hydroelectric dams impound water from the Yadkin River at the North Carolina/South Carolina border and the utilities would need to augment operations (i.e. release more water) when affected by river flooding.

B. Assumptions

- 1. The Pee Dee River Basin is particularly vulnerable to long duration river flooding due to the coastal plain's minimal elevation above sea level (less than 300 feet) which causes flood waters to take days or weeks to recede completely.
- 2. A river flooding event will not be a no-notice event in the Pee Dee River Basin. County emergency management agencies and SCEMD will have time to activate their EOCs and prepare for response operations.
- 3. Pre-identified shelters may be inundated or inaccessible, and alternative or additional sites may need to be established. A list of potential shelters outside of the 500-year floodplain can be found in the county river basin profiles.

#### IV. SITUATION

- A. The Pee Dee River Basin headwaters begin in Virginia and run through North Carolina before coming to South Carolina and exiting the state mainly through the Pee Dee region into the Atlantic Ocean through Winyah Bay.



#### B. Historical Impacts

1. Hurricane Matthew made landfall near McClellanville as a Category 1 Hurricane on October 8, 2016. Portions of the state received significant rainfall, with up to 17 inches in some areas of northeast and southern South Carolina. The result was widespread flash flooding and an extended period of river flooding, especially in the Pee Dee region. The widespread heavy rain in the Pee Dee River Basin of South Carolina caused several rivers to reach major flood stage. This included the Little Pee Dee, Lumber, and Waccamaw Rivers. Approximately \$122,000,000 in public assistance damages were reported.
2. Hurricane Florence was a slow-moving Category 1 hurricane when it made landfall near Wrightsville Beach, NC on September 14, 2018. The northeastern portion of South Carolina experienced two days of heavy rainfall. A station in Loris, SC recorded 23.63 inches of rain, setting a new state tropical cyclone rainfall record. Georgetown, Horry, Marlboro, Dillon, Marion, and Chesterfield counties all received rainfall in excess of 15 inches. In addition to the rain in South Carolina, portions of southeastern North Carolina received up to 35 inches of rain. This resulted in extensive

river flooding throughout the Pee Dee River Basin where the Little Pee Dee, Lumber, and Waccamaw Rivers all reached record levels, with the Waccamaw River at Conway rising nearly four feet higher than it did during Hurricane Matthew. The Waccamaw crested at 22.1 feet at Conway. Due to the record amounts of rainfall, South Carolina residents east of the Waccamaw River from US 17 at Georgetown to Little River were at risk of becoming isolated. A barrier was constructed along US 501 in Horry County to prevent road closure and to ensure access to areas east of the Waccamaw River. \$322,000,000 in public assistance damages was reported.

## V. DISASTER INTELLIGENCE

- A. For additional information on Disaster Intelligence and the Disaster Intelligence Group (DIG), see Section VII (Disaster Intelligence and Communications) and Attachment E of the SCEOP.

SCEMD developed a methodology to identify critical infrastructure in the Pee Dee region of the state that is at risk of river flooding. SCEMD developed river basin profiles for the 14 counties in the Pee Dee River Basin, overlaying the 500-year floodplain with critical infrastructure and population data, within each county.

- B. Components of the county river basin profiles are listed below.
1. Major Rivers – large rivers that carry water from NC or further north in SC throughout the river basin to the Atlantic Ocean.
  2. Critical Infrastructure – SCEMD has identified critical infrastructure within the 500-year floodplain. The 500-year floodplain is defined by FEMA as an area with a 0.2% (or 1 in 500 chance) annual chance of flooding. Certain categories of critical infrastructure are not included in the plan because they do not fall within the 500 year flood plain. Categories left out include Airports, EOCs, Hospitals and Military bases. Categories considered are listed below:
    - a. Fire Stations
    - b. Police Stations
    - c. Power Generation Facilities
    - d. Prisons/Jails
    - e. Wastewater
  3. Population – sourced from 2023 Census projection in ESRI Business Analyst, affected population within the 500-year floodplain.
  4. Shelters – sourced from DSS. No shelters listed in the county profiles are within the 500-year floodplain.



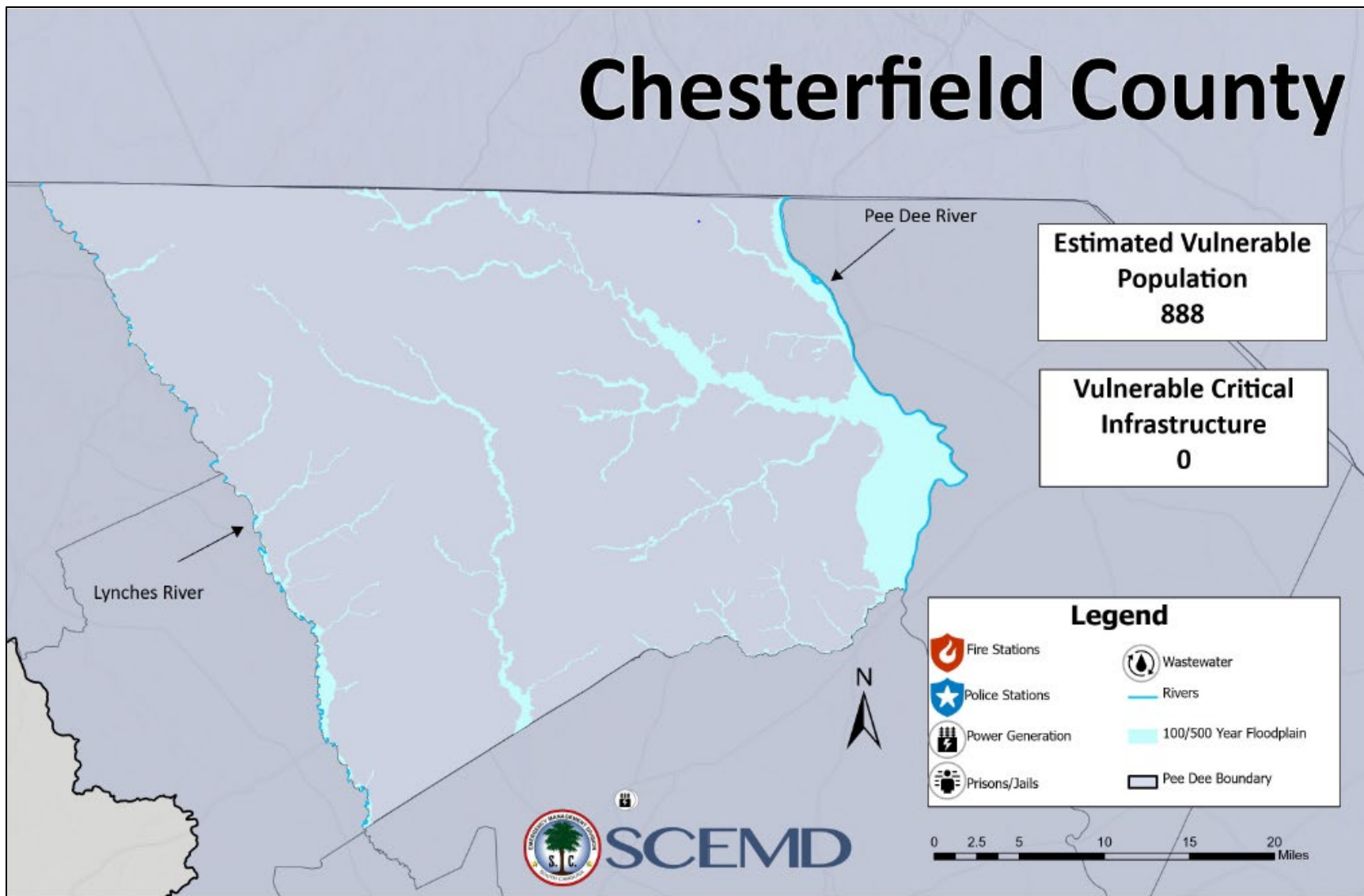
**COUNTY RIVER BASIN PROFILES**

---

**Chesterfield County**

- A. Major Rivers: Lynches and Pee Dee
- B. Critical Infrastructure: **No critical infrastructure** within the 500-year floodplain
- C. Population: **888** people within the 500-year floodplain
- D. Shelters:

Name	Build Type	County	Street	City	State	Zip Code	Capacity @ 40 sq
Central High School	School	Chesterfield	200 Zion Church Road	Pageland	SC	29728	221
Cheraw Intermediate School	School	Chesterfield	421 Chesterfield Highway	Chesterfield	SC	29709	441
Edwards Elementary School	School	Chesterfield	2411 West Boulevard	Chesterfield	SC	29709	127
Hopewell Baptist Church	Church	Chesterfield	15066 South Carolina 9	Chesterfield	SC	29709	50
Long Middle School	School	Chesterfield	1010 West Greene Street	Chesterfield	SC	29520	182
McBee High School	School	Chesterfield	204 East Pine Street	Chesterfield	SC	29101	201
New Heights Middle School	School	Chesterfield	5738 Highway 151	Chesterfield	SC	29718	188
Petersburg Primary School	School	Chesterfield	326 Arnold Street	Chesterfield	SC	29728	67



**Clarendon County**

A. Major Rivers: Black and Santee (not located in the Pee Dee River Basin)

B. Critical Infrastructure: **1 wastewater** facility within the 500-year floodplain

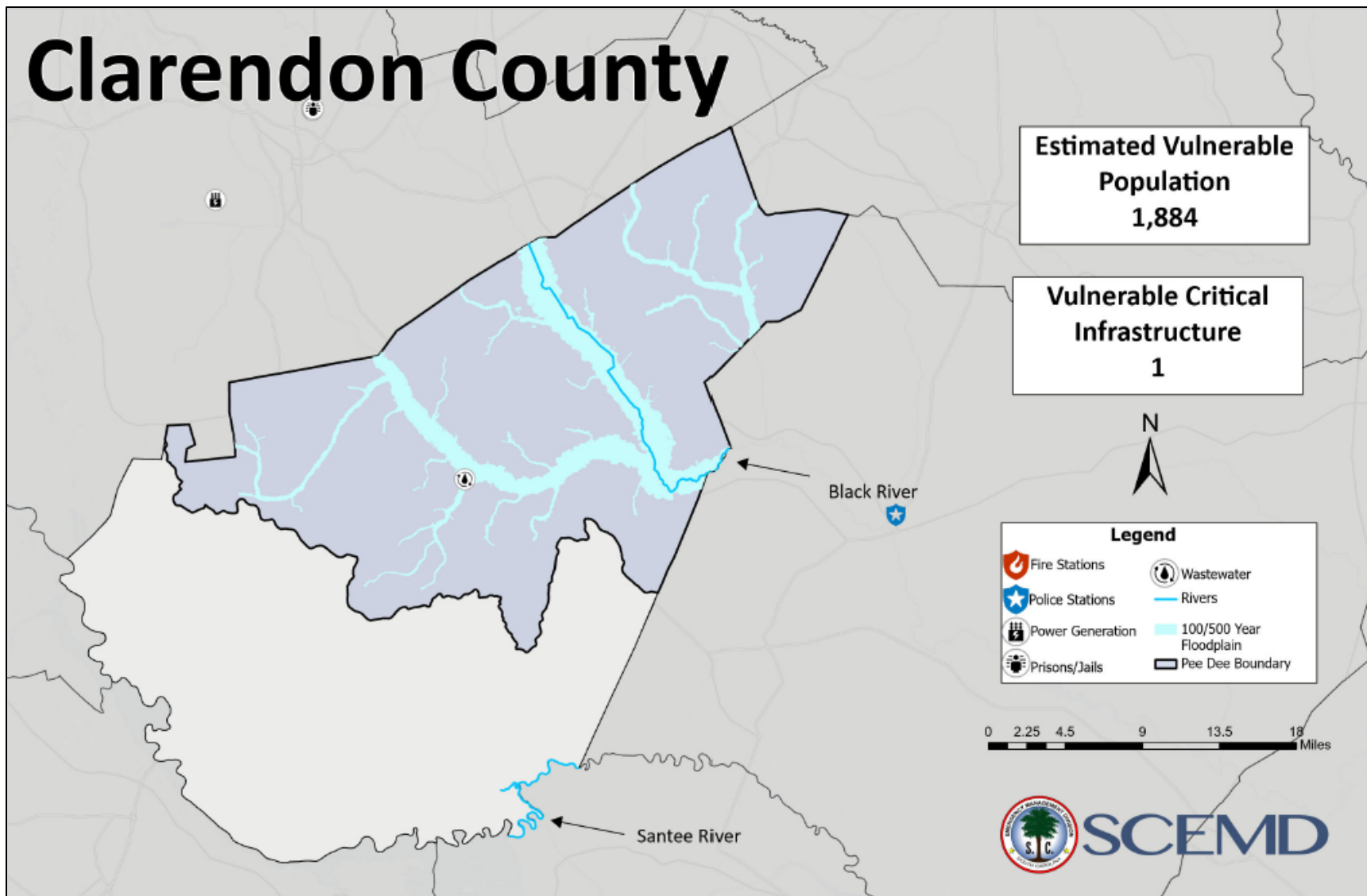
C. Population: **1,884** people within the 500-year floodplain

D. Shelters:

Name	Build Type	County	Street	City	State	Zip Code	Capacity @ 40 sq
Camp Bob Cooper	Camp	Clarendon	8001 M W Rickenbacker Rd	Summerton	SC	29148	25
Clarendon County Community Complex	Recreation	Clarendon	7 Maple Street	Manning	SC	29102	250
Clarendon One Community Resource Center	Recreation	Clarendon	1154 4th Street	Summerton	SC	29148	105
Scott's Branch Middle School	School	Clarendon	1154 4th Street	Summerton	SC	29148	174
East Clarendon High and Middle School	School	Clarendon	1171 Pope Street	Turbeville	SC	29162	293
Manning Elementary School	School	Clarendon	311 West Boyce Street	Manning	SC	29102	138
Manning High School	School	Clarendon	2155 Paxville Highway	Manning	SC	29102	193
Manning Junior High School	School	Clarendon	1101 West L Hamilton Road	Manning	SC	29102	183

Manning Methodist Church	Church	Clarendon	17 E. Rigby St.	Manning	SC	29102	75
Walker-Gamble Elementary School	School	Clarendon	2358 Walker Gamble Road	New Zion	SC	29111	270





**Darlington County**

A. Major Rivers: Lynches and Pee Dee

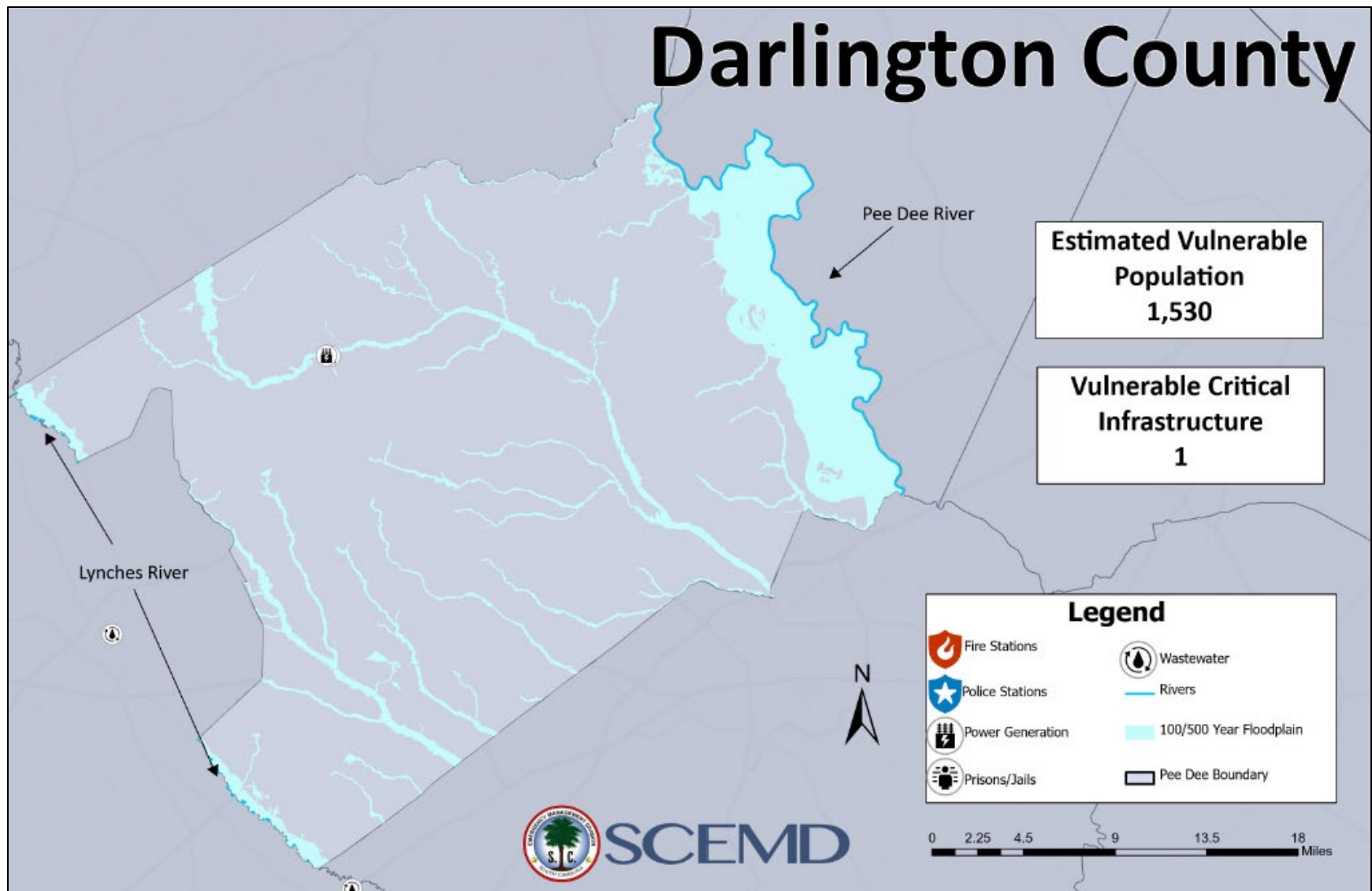
B. Critical Infrastructure: **1 power generation** facility within the 500-year floodplain

C. Population: **1,530** people within the floodplain

D. Shelters:

Name	Build Type	County	Street	City	State	Zip Code	Capacity @ 40 sq
A.W. Stanley Gym	Recreation	Darlington	107 Gary Street	Darlington	SC	29532	25
Brunson-Dargan Elementary	School	Darlington	400 Wells Street	Darlington	SC	29532	82
Darlington High School	School	Darlington	525 Spring Street	Darlington	SC	29532	194
Darlington Middle School	School	Darlington	150 Pinedale Drive	Darlington	SC	29532	324
Hartsville High School	School	Darlington	703 Lewellen Avenue	Hartsville	SC	29550	365
Hartsville Middle School	School	Darlington	1427 14th Street	Hartsville	SC	29550	342
Lake View Baptist Church	Church	Darlington	202 Lakeview Boulevard	Hartsville	SC	29550	25
Lamar Elementary School	School	Darlington	214 North Darlington Avenue	Lamar	SC	29069	66
Lamar High School	School	Darlington	216 North Darlington Avenue	Lamar	SC	29069	160
North Hartsville Elementary School	School	Darlington	110 School Drive	Hartsville	SC	29550	140

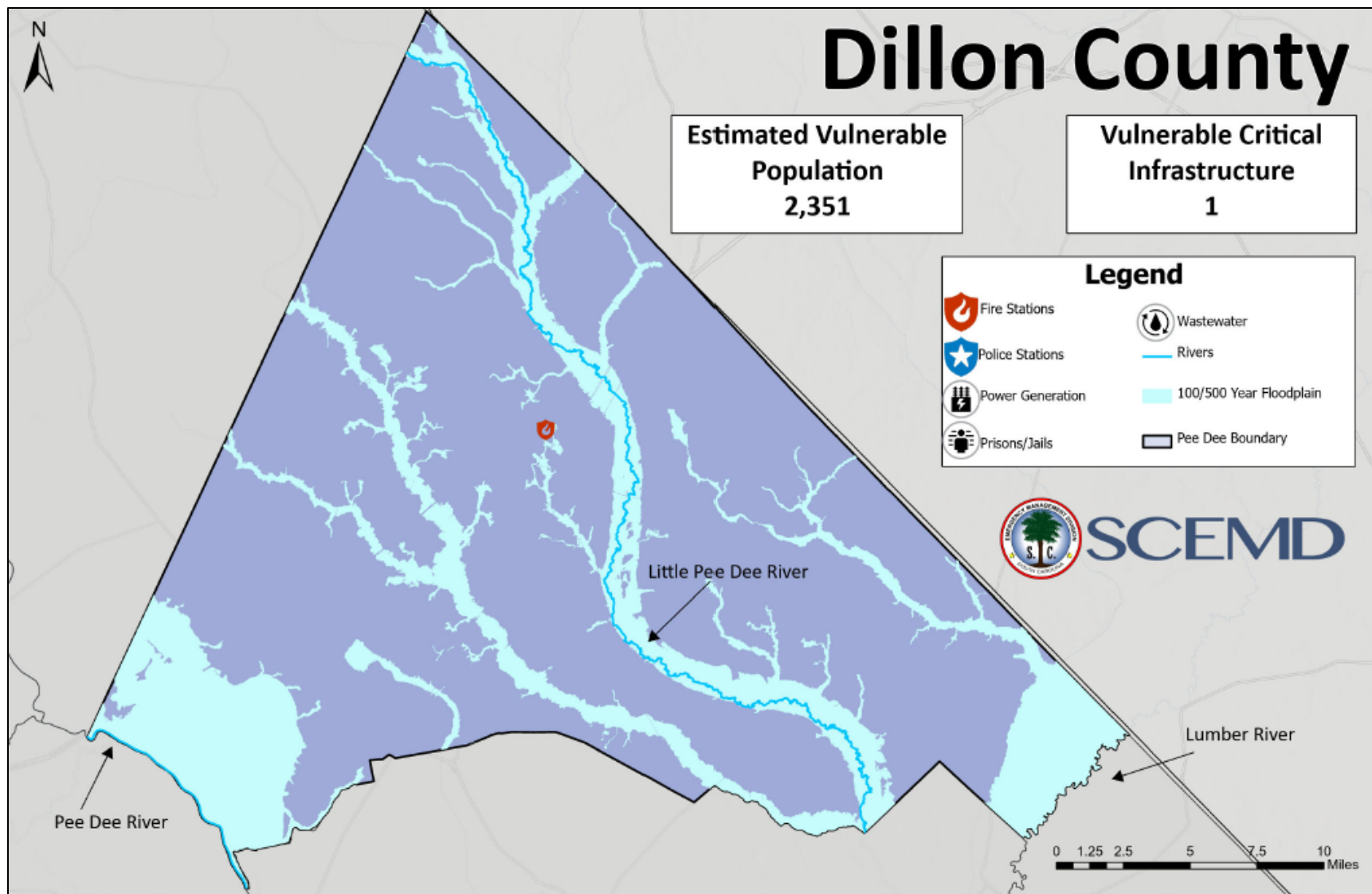
Rosenwald Elementary and Middle School	School	Darlington	508 Church Street	Society Hill	SC	29593	108
Spaulding Middle School	School	Darlington	400 South Main Street	Lamar	SC	29069	132
T.B. Thomas Sports Center	Recreation	Darlington	701 West Washington Street	Hartsville	SC	29550	200
Thornwell School for the Arts	School	Darlington	437 West Carolina Avenue	Hartsville	SC	29550	134



**Dillon County**

- A. Major Rivers: Little Pee Dee, Lumber and Pee Dee
- B. Critical Infrastructure: **1 fire station** within the 500-year floodplain
- C. Population: **2,351** people within the 500-year floodplain
- D. Shelters:

Name	Build Type	County	Street	City	State	Zip Code	Capacity @ 40 sq
Dillon High School	School	Dillon	1730 Highway 301 North	Dillon	SC	29536	355
Dillon Middle School	School	Dillon	1803 Joan Drive	Dillon	SC	29536	268
East Elementary School	School	Dillon	901 E Harrison St	Dillon	SC	29536	61
Gordon Elementary School	School	Dillon	926 Perry Avenue	Dillon	SC	29536	172
Lake View Elementary School	School	Dillon	1311 Scott Street	Lake View	SC	29563	150
Lake View High School	School	Dillon	401 East 3rd Avenue	Lake View	SC	29563	153
Latta High School	School	Dillon	618 N Richardson St	Latta	SC	29565	72
Latta Middle School	School	Dillon	602 N Richardson St	Latta	SC	29565	166
Stewart Heights Elementary	School	Dillon	1001 W Calhoun St	Dillon	SC	29536	80



**Florence County**

A. Major Rivers: Lynches and Pee Dee

B. Critical Infrastructure: **No Critical Infrastructure** within the 500-year floodplain

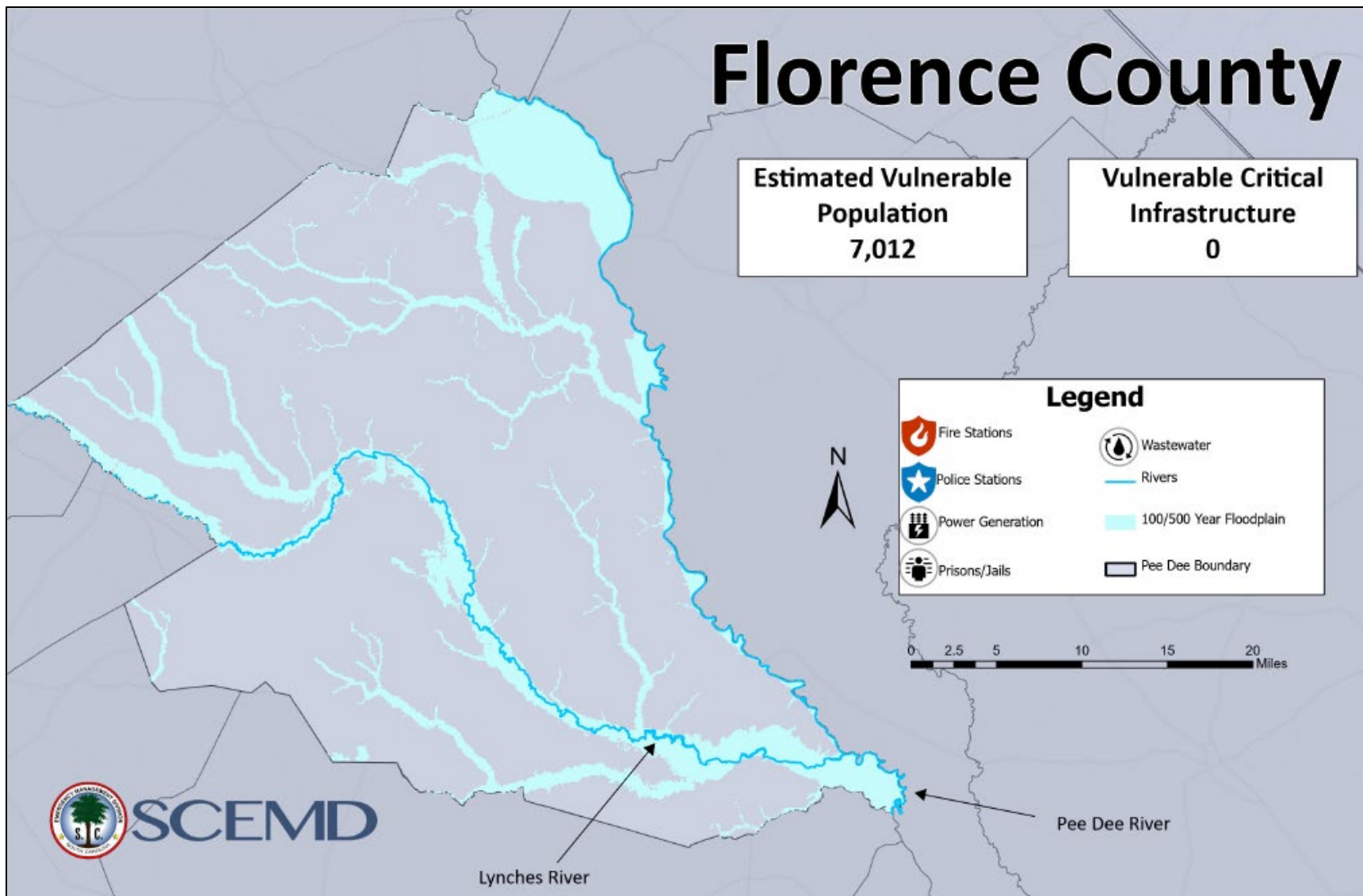
C. Population: **7,012** people within the 500-year floodplain

D. Shelters:

Name	Build Type	County	Street	City	State	Zip Code	Capacity @ 40 sq
Florence County Civic Center	Civic Center/Arena	Florence	3300 West Radio Dr	Florence	SC	29501	2000
Hannah-Pamplico Elementary and Middle School	School	Florence	2131 S Pamplico Hwy	Pamplico	SC	29583	118
Hannah-Pamplico High School	School	Florence	2055 S Pamplico Hwy	Pamplico	SC	29583	458
Johnsonville First Baptist Church	Church	Florence	145 N Georgetown Hwy	Johnsonville	SC	29555	150
Lake City Elementary School	School	Florence	906 N Matthews Road	Lake City	SC	29560	174
Lake City High School	School	Florence	652 N Matthews Road	Lake City	SC	29560	193
Mt. Claire Missionary Baptist Church	Church	Florence	1009 E Main St	Lake City	SC	29560	75

Ron McNair Jr High School	School	Florence	311 Carver Street	Lake City	SC	29560	137
S.T.A.R.S. Community Gymnasium	Community/Recreation Center	Florence	1407 South Church St	Florence	SC	29505	100
Saint Luke Lutheran Church	Church	Florence	1201 Cherokee Rd	Florence	SC	29501	38
Sneed Middle School	School	Florence	1102 Ebenzer Rd	Florence	SC	29501	353
South Florence High School	School	Florence	3200 S Irby Street	Florence	SC	29505	204
Southside Middle School	School	Florence	200 East Howe Springs Road	Florence	SC	29506	246
Timmons ville Educational Center	School	Florence	304 Kemper Street	Timmons ville	SC	29161	834
Timmons ville High School	School	Florence	304 Kemper Street	Timmons ville	SC	29161	224
Williams Middle School	School	Florence	1119 North Irby Street	Florence	SC	29501	184
Wilson High School	School	Florence	1411 East Old Marion Highway	Florence	SC	29506	285





**Georgetown County**

A. Major Rivers: Black, Pee Dee, Santee (not located in the Pee Dee River Basin) and Waccamaw

B. Critical Infrastructure: **12** critical infrastructure facilities within the 500-year floodplain

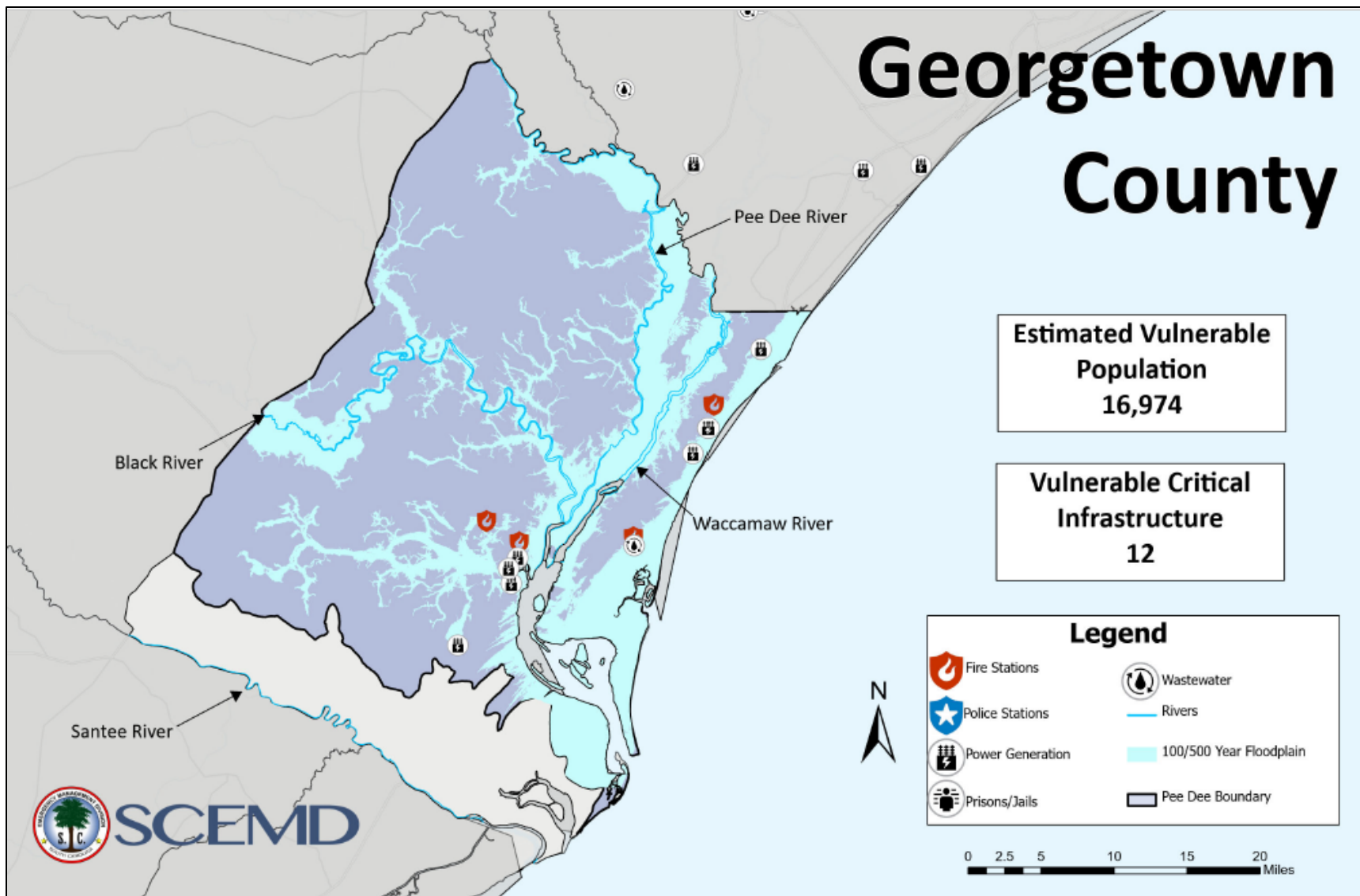
Fire Stations	Power Generation	Wastewater
4	7	1

C. Population: **16,794** people within the 500-year floodplain

D. Shelters:

Name	Build Type	County	Street	City	State	Zip Code	Capacity @ 40 sq
Andrews Elementary School	School	Georgetown	13072 County Line Road	Andrews	SC	29510	363
Andrews High School	School	Georgetown	12890 County Line Road	Andrews	SC	29510	291
Carvers Bay Middle School	School	Georgetown	13000 Choppee Road	Hemingway	SC	29554	131
Carvers Bay High School	School	Georgetown	13002 Choppee Road	Hemingway	SC	29554	265
Georgetown High School	School	Georgetown	2500 Anthuan Maybank Drive	Georgetown	SC	29440	25
Pleasant Hill Elementary School	School	Georgetown	127 Schoolhouse Road	Hemingway	SC	29554	204
Sampit Elementary School	School	Georgetown	69 Woodland Avenue	Georgetown	SC	29440	150

Waccamaw Middle School	School	Georgetown	247 Wildcat Way	Pawleys Island	SC	29585	25
Waccamaw Regional Recreation Center	Recreation	Georgetown	83 Duncan Ave	Pawleys Island	SC	29585	250



**Horry County**

A. Major Rivers: Little Pee Dee and Waccamaw

B. Critical Infrastructure: **8** critical infrastructure facilities within the 500-year floodplain. Due to the proximity of critical infrastructure data points, 1 more is listed than is portrayed on the map

Fire Stations	Power Generation	Wastewater
1	5	2

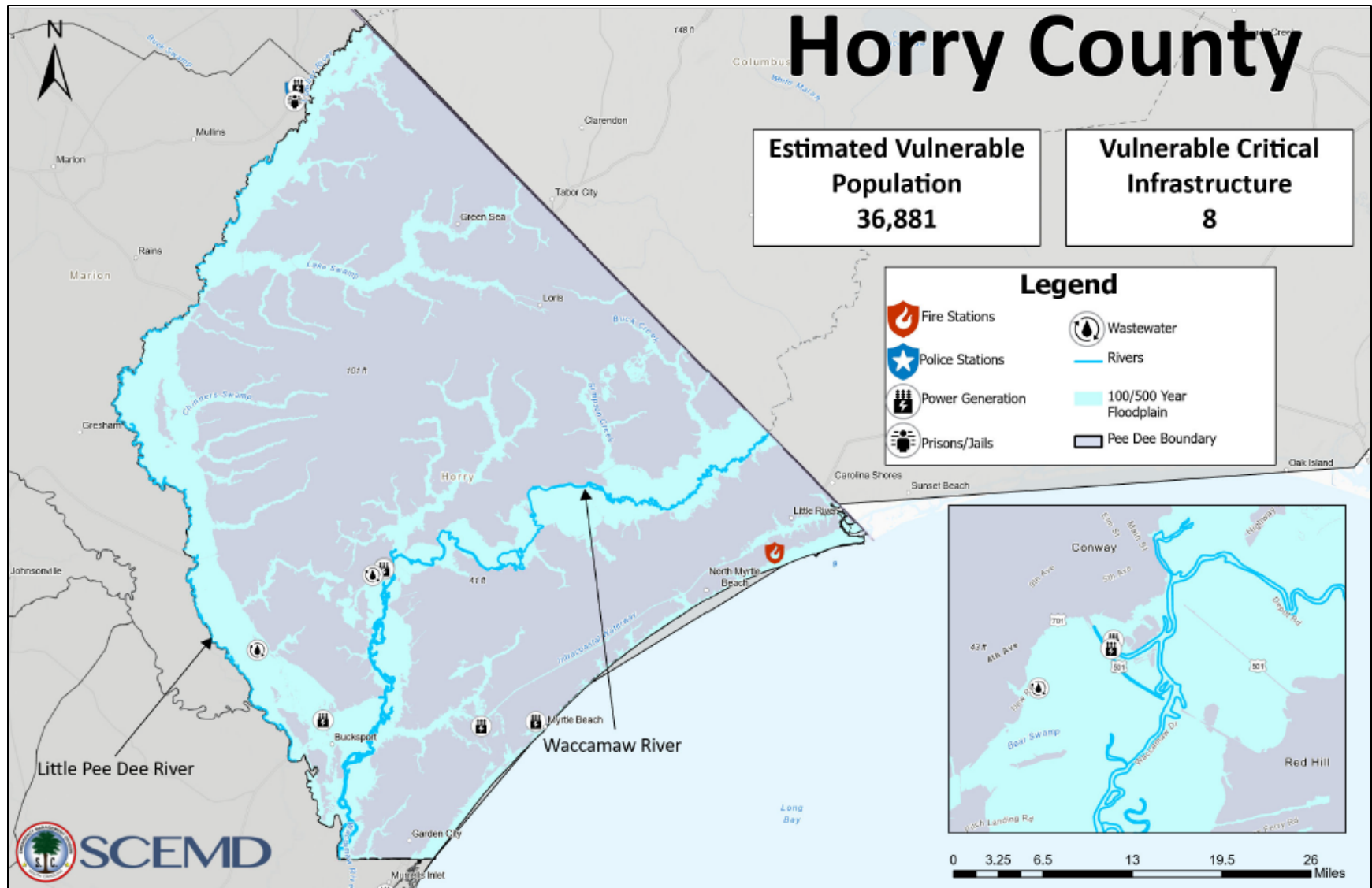
C. Population: **36,881** people within the 500-year floodplain

D. Shelters:

Name	Build Type	County	Street	City	State	Zip Code	Capacity @ 40 sq
Aynor Elementary School	School	Horry	516 Jordanville Rd	Aynor	SC	29511	206
Aynor High School	School	Horry	201 Jordanville Road	Aynor	SC	29511	235
Aynor Middle School	School	Horry	400 Frye Road	Galivants Ferry	SC	29544	385
Beach Church	Church	Horry	557 George Bishop Pkwy	Myrtle Beach	SC	29579	250
Blackwater Middle School	School	Horry	900 E Cox Ferry Rd	Conway	SC	29526	412
Christ the Servant Lutheran Church	Church	Horry	2105 US 501	Conway	SC	29526	50

City of Conway Recreation Center	Community/Recreation Center	Horry	1515 Mill Pond Road	Conway	SC	29526	50
Conway High School	School	Horry	2301 Church Street	Conway	SC	29526	480
Episcopal Church of Resurrection	Church	Horry	8901 US Highway 17 Bypass South	Surfside Beach	SC	29575	25
Grand Strand Church of Christ	Church	Horry	2212 Glens Bay Rd	Surfside Beach	SC	29575	17
James Frazier Community Center	Community/Recreation Center	Horry	1370 Bucksport Rd	Bucksport	SC	29527	25
Loris Elementary School	School	Horry	901 SC-9 Business	Loris	SC	29569	232
Loris High School	School	Horry	301 Loris Lion Road	Loris	SC	29569	436
Loris Middle School	School	Horry	5209 SC-66	Loris	SC	29569	385
Loris United Methodist Church	Church	Horry	3507 Broad St	Loris	SC	29569	25
Myrtle Beach High School	School	Horry	3302 Robert M Grissom Pkwy	Myrtle Beach	SC	29577	250
Myrtle Beach Middle School	School	Horry	3101 N Oak St	Myrtle Beach	SC	29577	250
North Myrtle Beach High School	School	Horry	3750 Sea Mountain Highway	Little River	SC	29566	291
Ocean Bay Elementary School	School	Horry	950 International Dr	Myrtle Beach	SC	29579	233

Ocean Bay Middle School	School	Horry	905 International Dr	Myrtle Beach	SC	29579	309
Palmetto Bays Elementary School	School	Horry	8900 SC-544	Myrtle Beach	SC	29588	389
Palmetto Shores Church	Church	Horry	6250 Dick Pond Road	Myrtle Beach	SC	29588	25
Pee Dee Elementary School	School	Horry	6555 Hwy 134	Conway	SC	29527	266
Risen Christ Luthuren Church	Church	Horry	10595 N Kings Hwy	Myrtle Beach	SC	29572	50
South Conway Elementary School	School	Horry	3001 4th Ave	Conway	SC	29527	100
Whittemore Park Middle School	School	Horry	1808 Rhue St	Conway	SC	29527	423

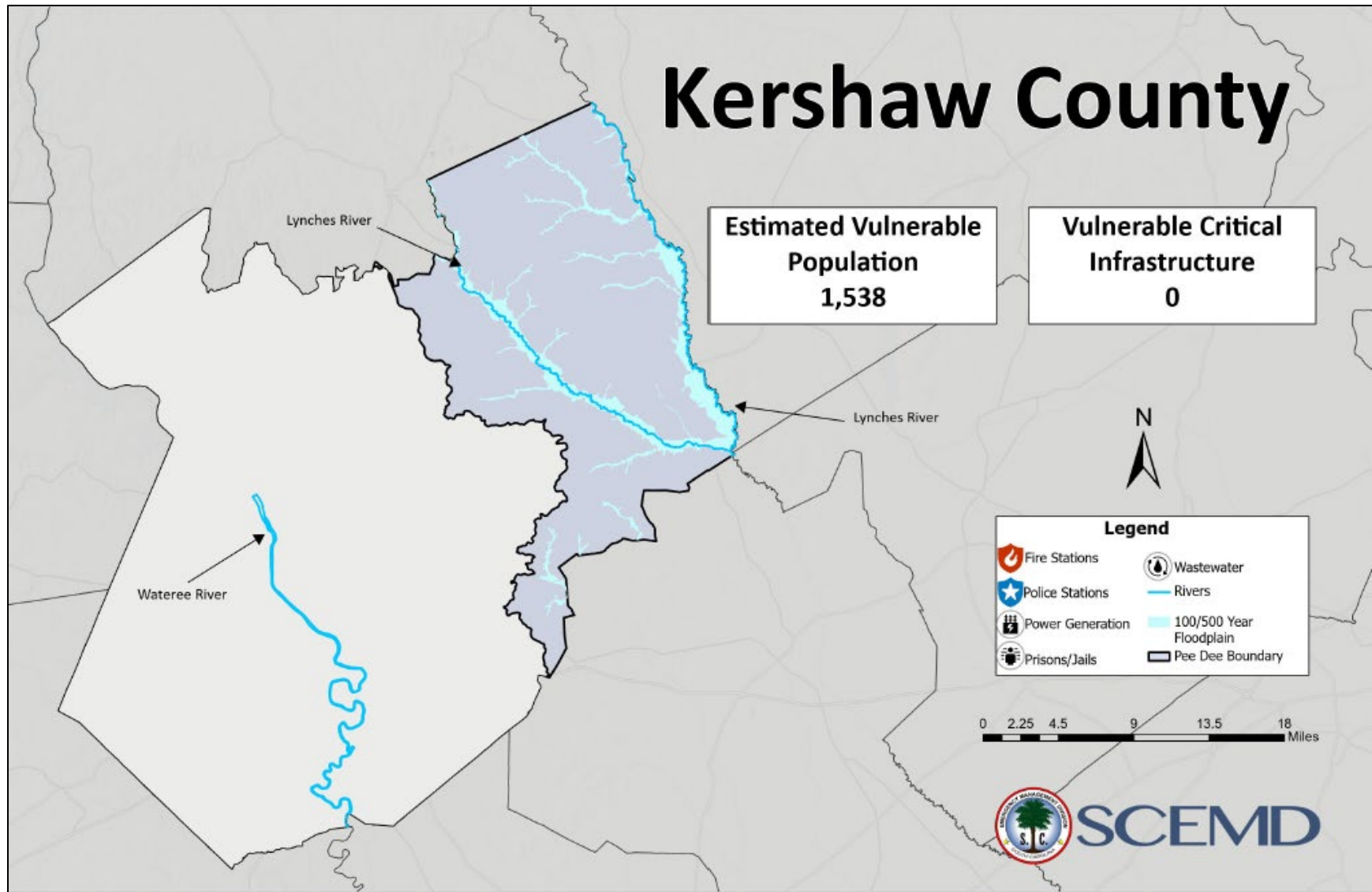




**Kershaw County**

- A. Major Rivers: Lynches and Wateree (not located in the Pee Dee River Basin)
- B. Critical Infrastructure: **No Critical Infrastructure** within the 500-year floodplain
- C. Population: **1,568** people within the 500-year floodplain
- D. Shelters:

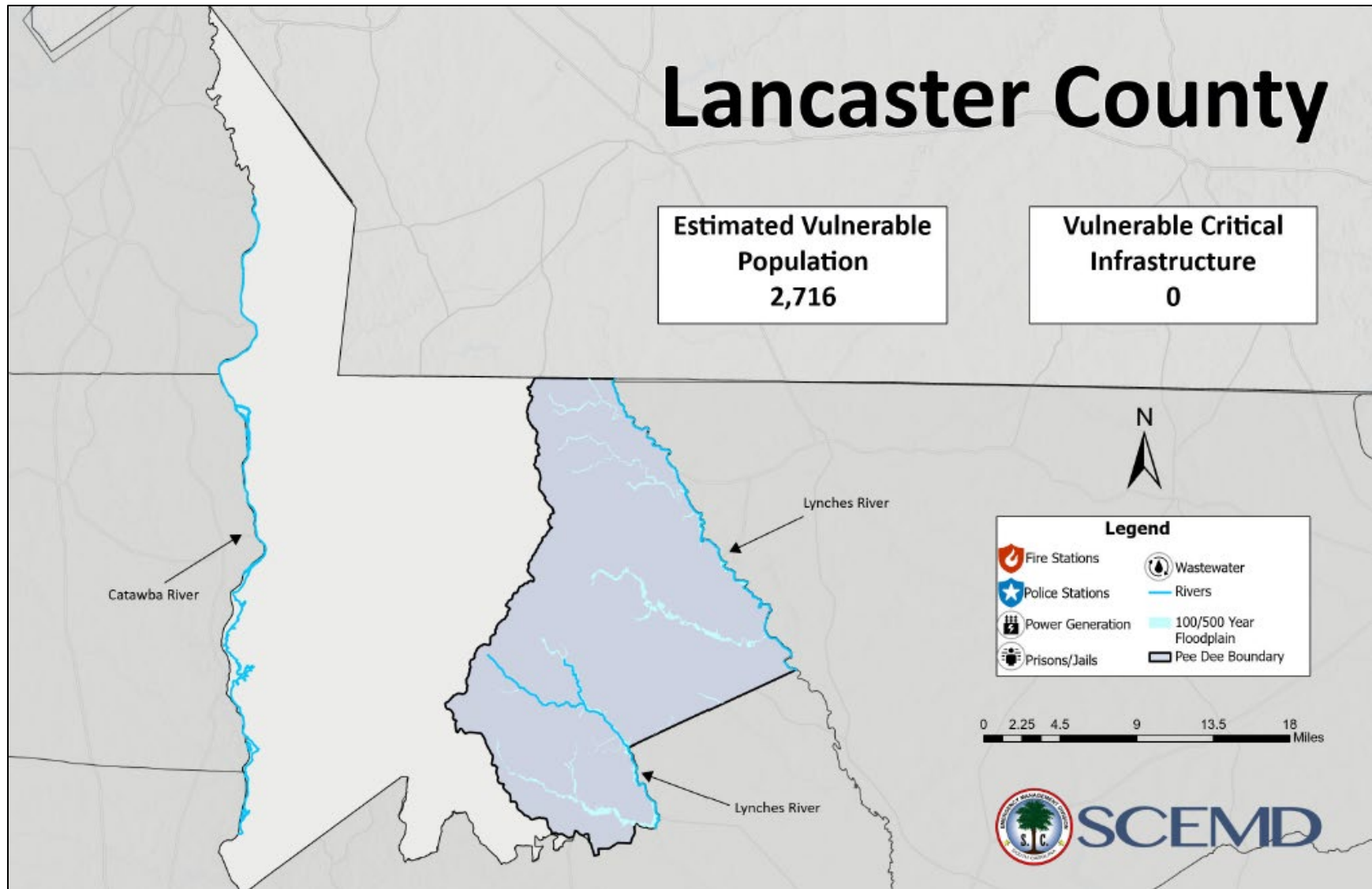
Name	Build Type	County	Street	City	State	Zip Code	Capacity @ 40 sq
Camden High School	School	Kershaw	1022 Ehrenclou Drive	Camden	SC	29020	421
Lugoff-Elgin High School	School	Kershaw	1284 U.S. 1	Lugoff	SC	29078	225



**Lancaster County**

- A. Major Rivers: Lynches and Catawba (not located in the Pee Dee River Basin)
- B. Critical Infrastructure: **No Critical Infrastructure** within the 500-year floodplain
- C. Population: **2,716** people within the 500-year floodplain
- D. Shelters:

Name	Build Type	County	Street	City	State	Zip Code	Capacity @ 40 sq
Andrew Jackson High School	School	Lancaster	6925 Kershaw Camden Highway	Kershaw	SC	29067	239
Buford High School	School	Lancaster	4290 Tabernacle Road	Lancaster	SC	29720	196
Indian Land High School	School	Lancaster	8063 River Road	Fort Mill	SC	29707	240
Lancaster High School	School	Lancaster	617 Normandy Road	Lancaster	SC	29720	239



**Lee County**

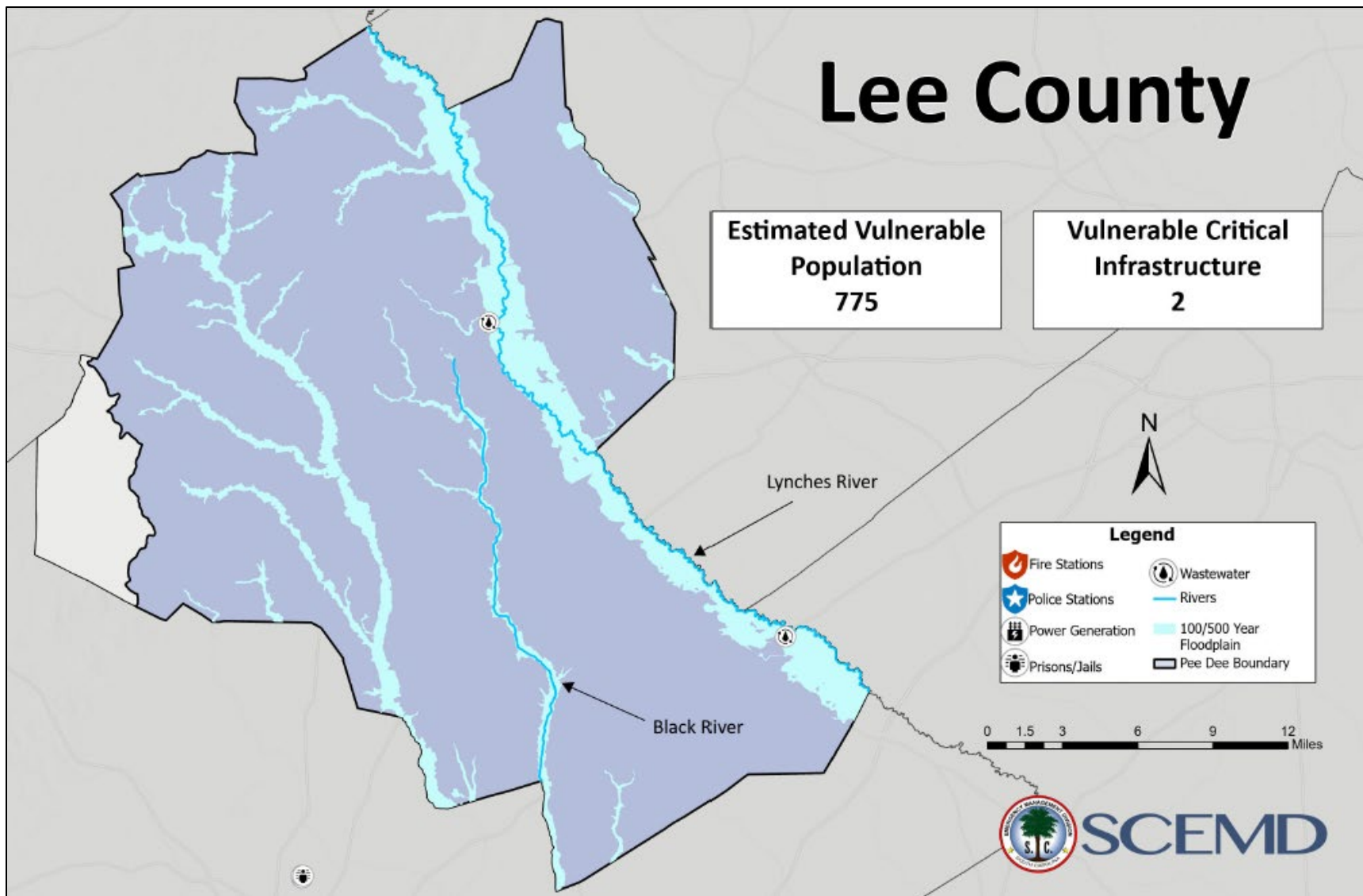
A. Major Rivers: Lynches and Black

B. Critical Infrastructure: **2 wastewater** facilities within the 500-year floodplain

C. Population: **775** people within the 500-year floodplain

D. Shelters:

Name	Build Type	County	Street	City	State	Zip Code	Capacity @ 40 sq
Bishopville Primary School	School	Lee	321 Roland Street	Bishopville	SC	29010	126
Dennis Intermediate School	School	Lee	321 Roland Street	Bishopville	SC	29010	230
Lee Central Middle School	School	Lee	41 Charlene Lane	Bishopville	SC	29010	207
Lee Central High School	School	Lee	1800 Wisacky Highway	Bishopville	SC	29010	422
Lower Lee Elementary School	School	Lee	5142 Saint Charles Road	Mayesville	SC	29104	100



**Marion County**

A. Major Rivers: Little Pee Dee, Lumber, and Pee Dee

B. Critical Infrastructure: **4** critical infrastructure facilities within the 500-year floodplain. Due to the proximity of critical infrastructure data points, 1 more is listed than is portrayed on the map

Police Stations	Power Generation	Prisons/Jails
1	2	1

C. Population: **3,451** people within the 500-year floodplain

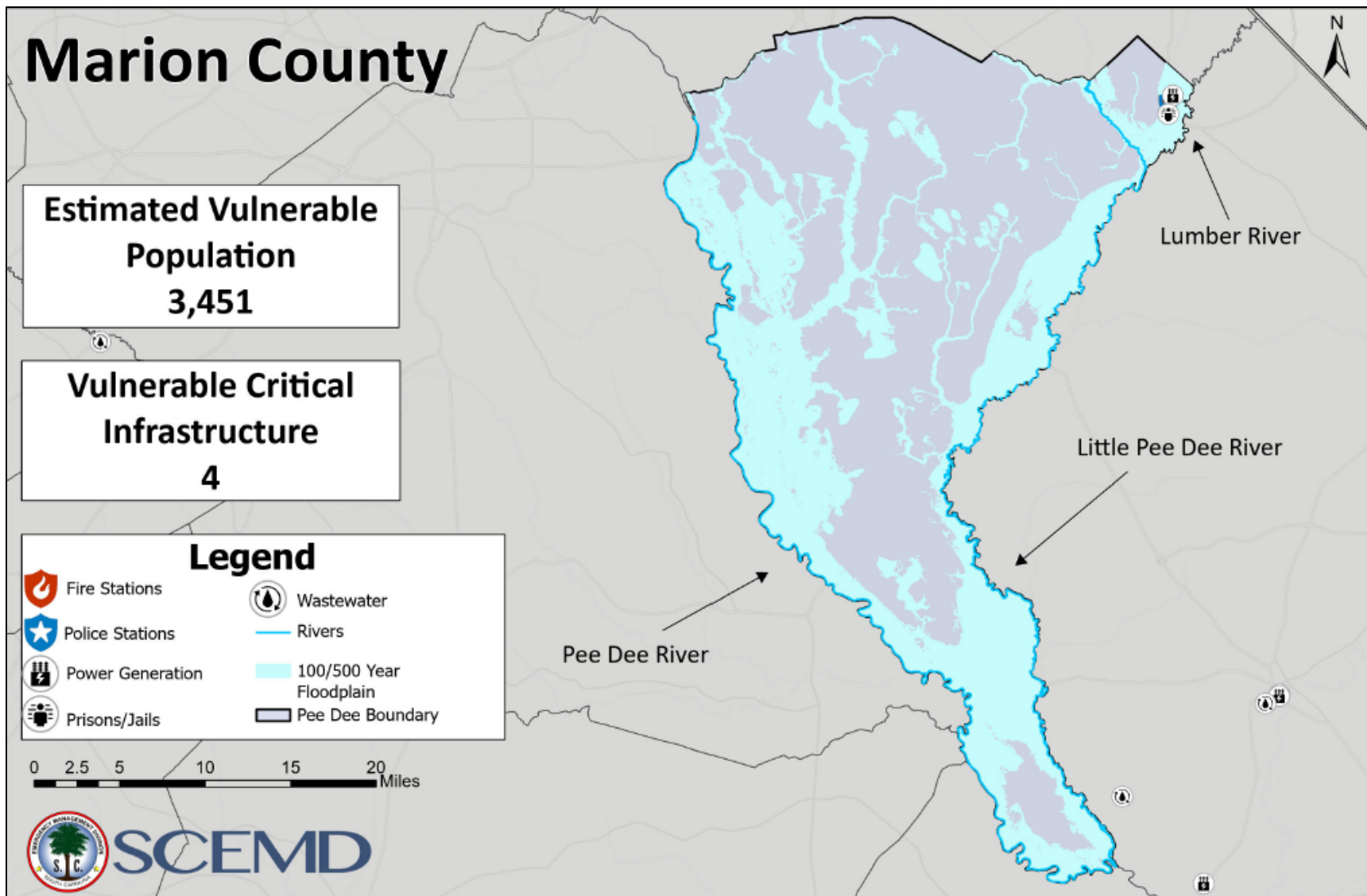
D. Nichols SC: Included in this county profile is a Demographic and Infrastructure Analysis for Nichols, SC which became flooded in 2016 and 2018. Both storms produced double the flow of any storm since 1940 through the Gallivants Ferry River gaging station. Nichols is 56 feet above sea level. Nichols can be impacted by floodwaters from both the Lumber River and the Little Pee Dee River. Floodwaters from the Little Pee Dee River flow north and west of US-76 impacting the western side of town. Floodwaters from the Lumber River primarily impact areas to the east and north of US-76. The Lumber River floodwaters move through the town and combine with backwater from the Little Pee Dee.

E. Shelters:

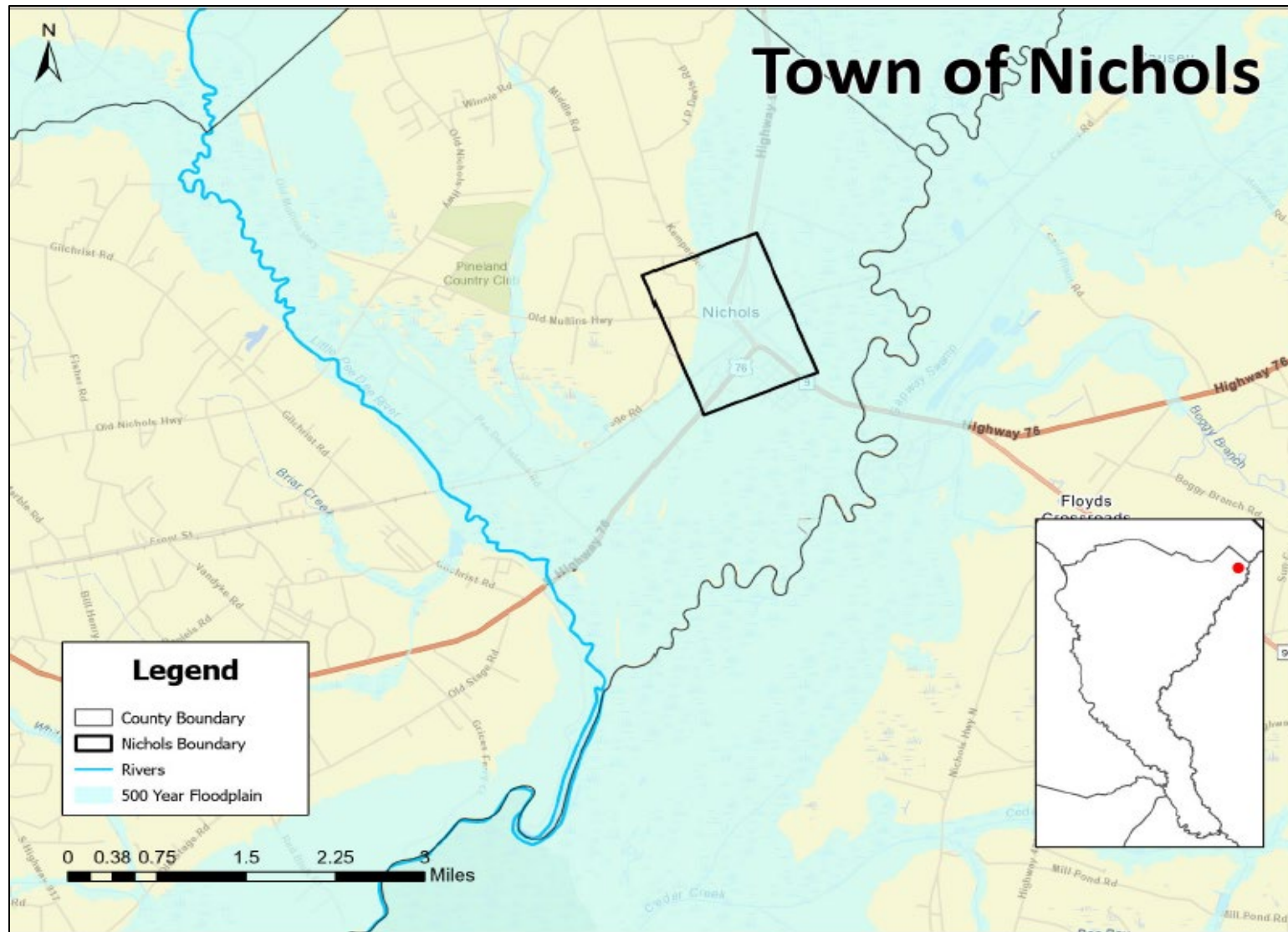
Name	Build Type	County	Street	City	State	Zip Code	Capacity @ 40 sq
Creek Bridge High School	School	Marion	6641 S Highway 41	Marion	SC	29571	152
Gapway Baptist Church	Church	Marion	5502 H Wade Court	Mullins	SC	29574	20
Johnakin Middle School	School	Marion	601 Gurley Street	Marion	SC	29571	156
Marion High School	School	Marion	1205 South Main Street	Marion	SC	29571	387

McMillan Baptist Church	Church	Marion	1446 Old Corner Rd	Marion	SC	29571	25
Mullins High School	School	Marion	747 Millers Road	Mullins	SC	29574	313
Mullins Park Street Gym	Community/Recreation Center	Marion	N Park St	Mullins	SC	29574	107
New Mt. Zion AME Church	Church	Marion	2620 Main St	Sellers	SC	29592	14
Palmetto Middle School	School	Marion	305 O-Neal St	Mullins	SC	29574	150

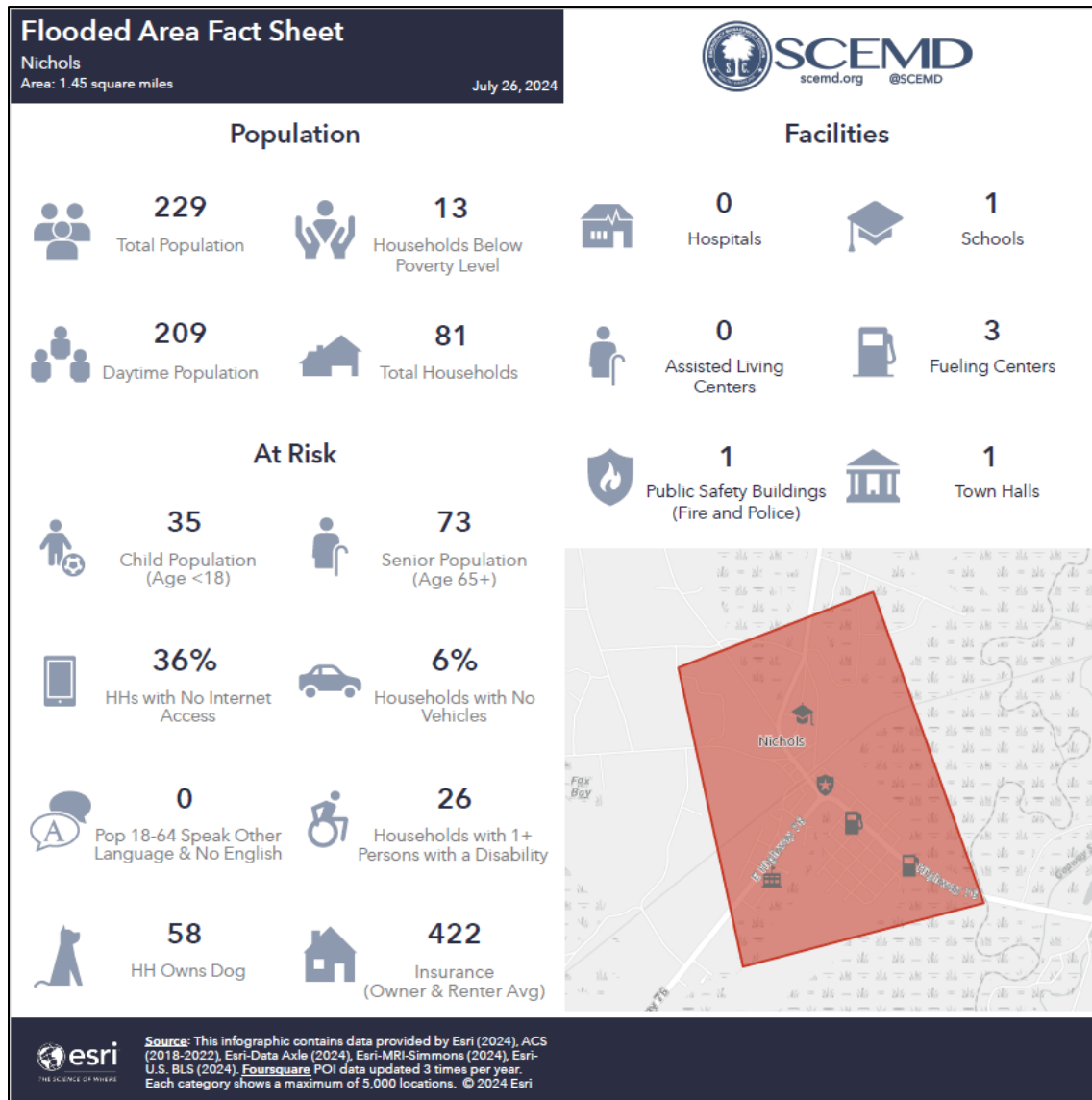




Nichols, SC location



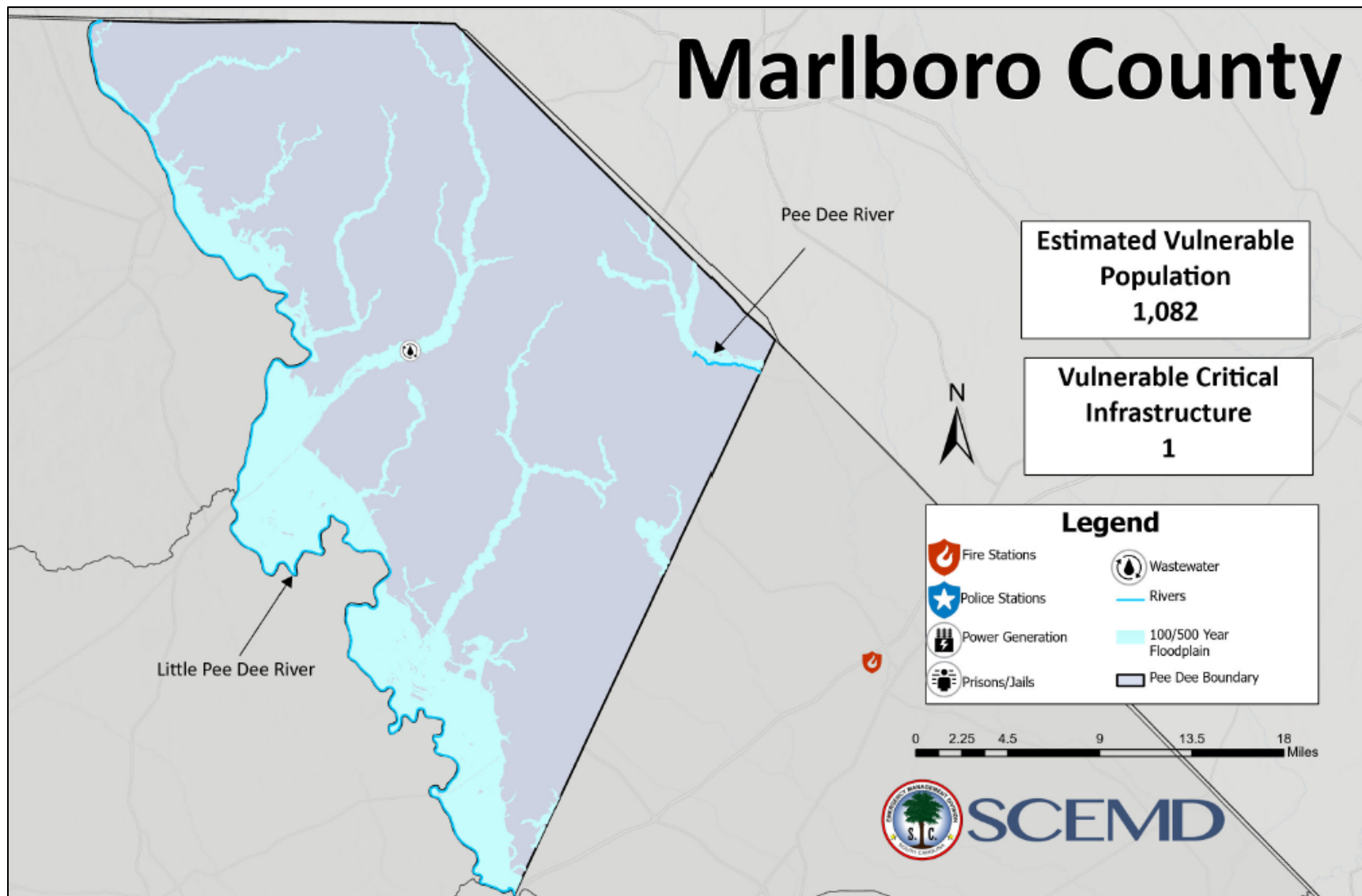
### Nichols, SC Demographic and Infrastructure Analysis



**Marlboro County**

- A. Major Rivers: Pee Dee and Little Pee Dee
- B. Critical Infrastructure: **1 wastewater** facility within the 500-year floodplain
- C. Population: **1,082** people within the 500-year floodplain
- D. Shelters:

Name	Build Type	County	Street	City	State	Zip Code	Capacity @ 40 sq
Blenheim Elementary/Middle School	School	Marlboro	143 Highland Street	Blenheim	SC	29516	189
Marlboro High School	School	Marlboro	951 Fayetteville Avenue	Bennettsville	SC	29512	342
McColl Elementary/Middle School	School	Marlboro	700 North Main Street	McColl	SC	29570	27
Wallace Elementary/Middle School	School	Marlboro	3643 South Carolina 9	Wallace	SC	29596	63

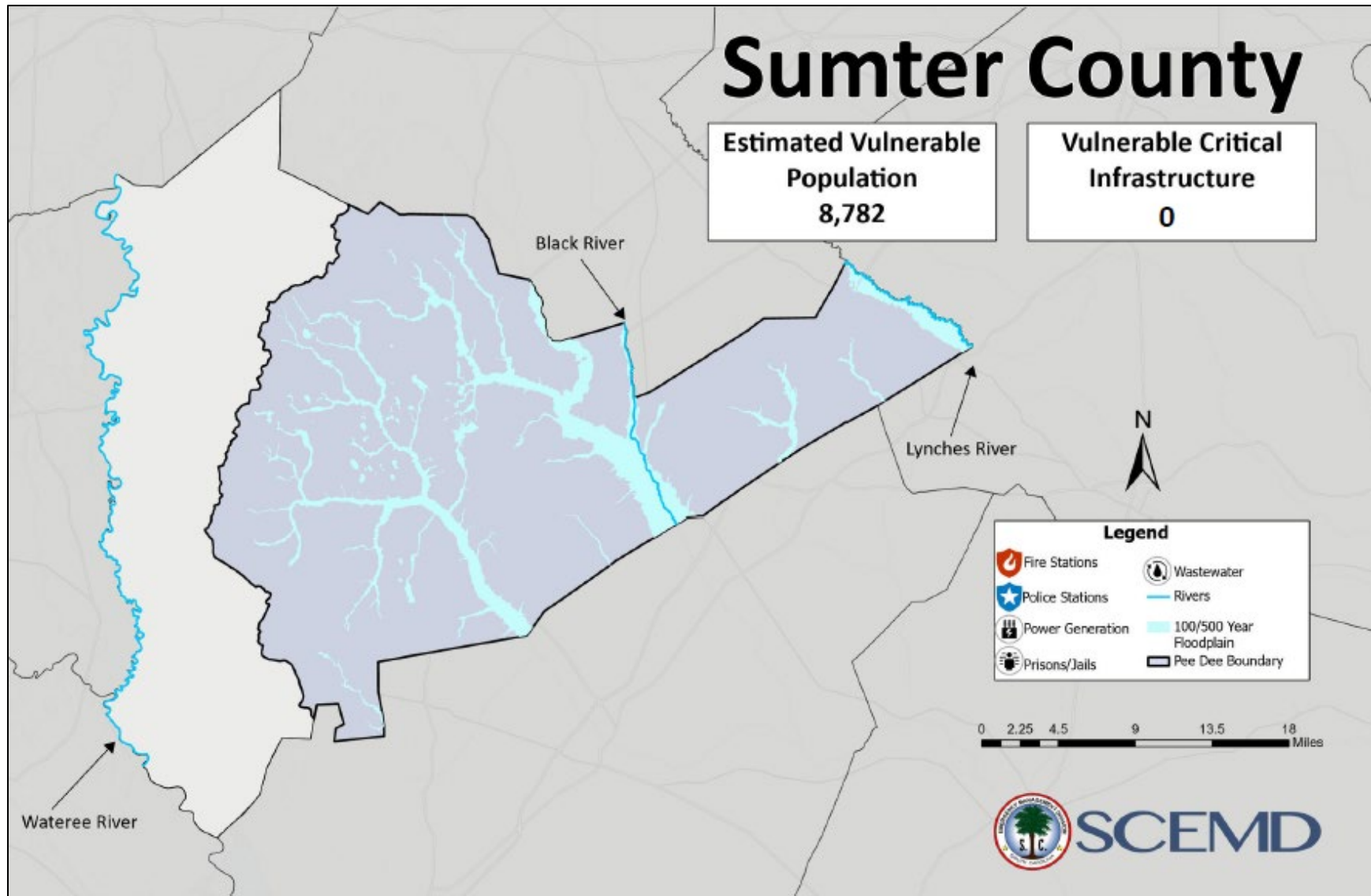


**Sumter County**

- A. Major Rivers: Black, Lynches and Wateree
- B. Critical Infrastructure: **No critical infrastructure** within the 500-year floodplain
- C. Population: **8,782** people within the 500-year floodplain
- D. Shelters:

Name	Build Type	County	Street	City	State	Zip Code	Capacity @ 40 sq
Alice Drive Elementary School	School	Sumter	251 Alice Drive	Sumter	SC	29150	245
Alice Drive Middle School	School	Sumter	40 Miller Road	Sumter	SC	29150	251
Birmie Hope Center	Community	Sumter	210 S Purdy Street	Sumter	SC	29150	125
Crestwood High School	School	Sumter	2000 Oswego Road	Sumter	SC	29153	277
Ebenezer Middle School	School	Sumter	3440 Ebenezer Road	Sumter	SC	29153	185
Furman Middle School	School	Sumter	3400 Bethel Church Road	Sumter	SC	29154	148
Lakewood High School	School	Sumter	350 Old Manning Road	Sumter	SC	29150	277
Mayewood Middle School	School	Sumter	4300 East Brewington Road	Sumter	SC	29153	137
R.E. Davis Elementary School	School	Sumter	345 Eastern School Road	Sumter	SC	29153	109
St. Mark's AME Church	Church	Sumter	12190 Lynches River Road	Olanta	SC	29114	20

Sumter County Recreation Center	Recreation	Sumter	155 Haynsworth Street	Sumter	SC	29150	59
Sumter High School	School	Sumter	2580 McCrays Mill Road	Sumter	SC	29154	394





**Williamsburg County**

- A. Major Rivers: Black, Pee Dee, and Santee
- B. Critical Infrastructure: **1 police station** within the 500-year floodplain
- C. Population: **2,526** people within the 500-year floodplain
- D. Shelters:

Name	Build Type	County	Street	City	State	Zip Code	Capacity @ 40 sq
C.E. Murray High School	School	Williamsburg	222 C E Murray Boulevard	Greeleyville	SC	29056	136
Hemingway Elementary School	School	Williamsburg	160 County Road S-45-430	Hemingway	SC	29554	169
Hemingway High School	School	Williamsburg	402 South Main Street	Hemingway	SC	29554	328
Kingstree City Recreation Center	Recreation	Williamsburg	601 Nelson Boulevard	Kingstree	SC	29556	133
Kingstree Magnet School of the Arts	School	Williamsburg	710 Third Avenue	Kingstree	SC	29556	229
Kingstree Senior High School - East Campus	School	Williamsburg	615 Martin Luther King Junior Avenue	Kingstree	SC	29556	103
Kingstree Senior High School - West Campus	School	Williamsburg	616 Martin Luther King Junior Avenue	Kingstree	SC	29556	124
Tupperware Gym	Recreation	Williamsburg	248 Tupperware Road	Kingstree	SC	29554	100

Williamsburg County Rec	Recreation	Williamsburg	2084 Thurgood Marshall Highway	Kingstree	SC	29556	125
Williamsburg County Short Term Recovery	Gym	Williamsburg	2086 Thurgood Marshall Highway	Kingstree	SC	29556	

