

# EPSON RC+ 7.1.1 Release Notes

October 23, 2014

Thank you for using EPSON RC+ 7.1.1. This document contains the latest information for this release. Please read before using this software.

<b>DOCUMENTATION</b> .....	2
<b>GETTING STARTED</b> .....	2
<b>WHAT'S NEW IN VERSION 7.1.1</b> .....	2
<b>WHAT'S FIXED IN VERSION 7.1.1</b> .....	2
<b>VISION GUIDE 7.0</b> .....	3
TROUBLESHOOTING GIGE CAMERA DRIVER INSTALLATION.....	3

## Documentation

All RC+ manuals are in PDF format and are installed on the PC hard disk. These manuals are accessible from the EPSON RC+ 7.0 environment Help menu.

## Getting Started

Read the Getting Started chapter in the EPSON RC+ 7.0 User's Guide. This chapter will refer you to the RC700 Controller manual Installation chapter. This contains information for initial connections and start up.

## What's New in version 7.1.1

1. Supports CV2 Compact Vision System.
2. Added a search function for adding new cameras to the system.

## What's Fixed in version 7.1.1

### General

1. Fixed a problem where if a program or point file was changed while the Display Variables dialog was open, then display became empty.
2. Now an error does not occur if you change connection from a controller with Fieldbus Master to a controller that does not have it.
3. Fixed a problem where sometimes error 3860 occurred if a project was opened, then Robot Manager was opened, then the project was built.
4. Fixed a problem when connecting to a controller that was already running tasks. the system did not ask if you wanted to only monitor operation.

### Vision Guide

5. Fixed a problem where if a Geometric or Polar model was renamed on a system using only PC Vision cameras, the associated model file was not renamed.
6. Fixed a problem where if a new calibration was created at runtime for a compact vision camera, errors would occur when you executed VCal or VCalPoints.

### API

7. Fixed a problem where error 7505 occurred when using VGet for calibration properties or results.
8. Now the SFree and SLock methods are available when using Visual Basic with the RCAPINet.dll library.

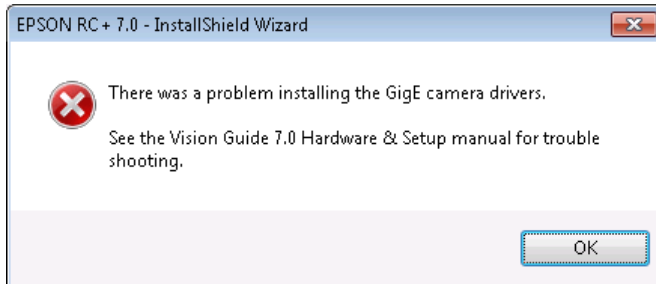
### GUI Builder

9. Fixed a problem for the Text property. If commas were used in the text, the text was truncated after the first comma.

## Vision Guide 7.0

### ***Troubleshooting GigE Camera Driver Installation***

The following message may be displayed after the installation of EPSON RC+ 7.0 GigE camera drivers.

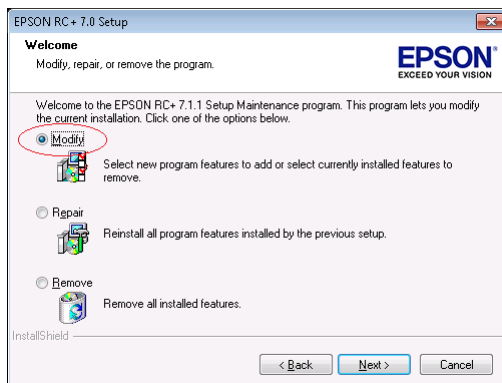


In this case, please refer to the following sections in the Vision Guide 7.0 Hardware & Setup manual:

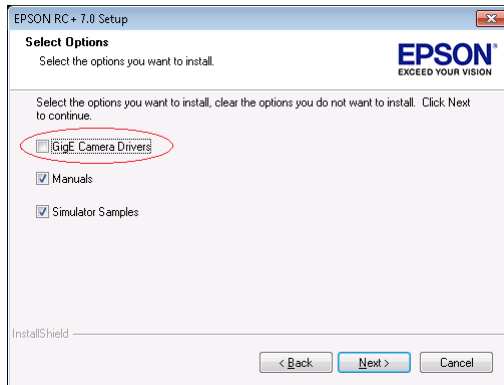
- Setup
- 2 Software Configuration
  - 2.2 Network Configuration of Vision PC
    - 2.2.1 Network Driver Setting Confirmation
    - 2.2.2 Filter Driver Setting
- 6 Trouble Shooting
  - “FilterDriver” Installation Error Occurred

After make the recommended changes, you will need to re-install the GigE camera drivers. Perform the following steps:

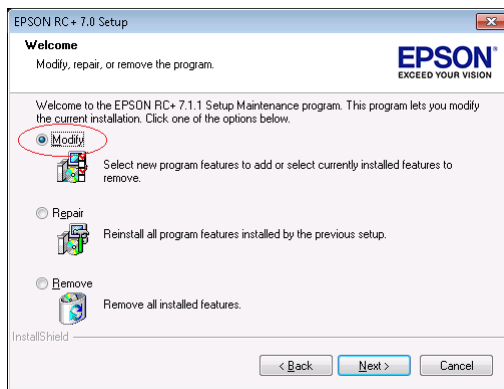
1. Start the EPSON RC+ 7.0 installer.
2. Select Modify, then click Next.



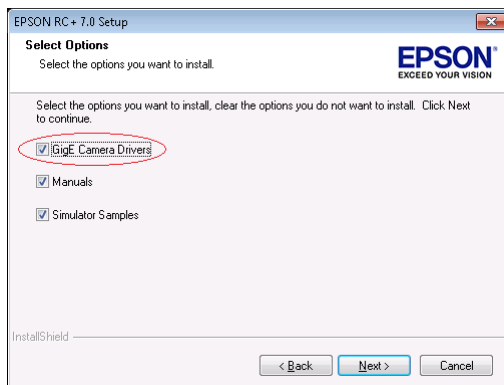
3. Uncheck GigE Camera Drivers and click Next.



4. Click Next and finish the installation.
5. Start the EPSON RC+ 7.0 installer.
6. Select Modify.



7. Check GigE Camera Drivers and click Next.



8. Click Next and finish the installation.