

**cakewalk**  
by Roland



# UA-1G

## USB AUDIO INTERFACE

Owner's Manual

**Before using this unit, carefully read the sections entitled: "USING THE UNIT SAFELY" and "IMPORTANT NOTES" (P.3; P.5). These sections provide important information concerning the proper operation of the unit. Additionally, in order to feel assured that you have gained a good grasp of every feature provided by your new unit, Owner's manual should be read in its entirety. The manual should be saved and kept on hand as a convenient reference.**

**Copyright © 2009 ROLAND CORPORATION**

**All rights reserved. No part of this publication may be reproduced in any form without the written permission of ROLAND CORPORATION.**

# USING THE UNIT SAFELY

## INSTRUCTIONS FOR THE PREVENTION OF FIRE, ELECTRIC SHOCK, OR INJURY TO PERSONS

### About ⚠ WARNING and ⚠ CAUTION Notices

<b>⚠ WARNING</b>	Used for instructions intended to alert the user to the risk of death or severe injury should the unit be used improperly.
<b>⚠ CAUTION</b>	Used for instructions intended to alert the user to the risk of injury or material damage should the unit be used improperly. * Material damage refers to damage or other adverse effects caused with respect to the home and all its furnishings, as well to domestic animals or pets.

### About the Symbols

	The ⚠ symbol alerts the user to important instructions or warnings. The specific meaning of the symbol is determined by the design contained within the triangle. In the case of the symbol at left, it is used for general cautions, warnings, or alerts to danger.
	The ⚠ symbol alerts the user to items that must never be carried out (are forbidden). The specific thing that must not be done is indicated by the design contained within the circle. In the case of the symbol at left, it means that the unit must never be disassembled.
	The ⚠ symbol alerts the user to things that must be carried out. The specific thing that must be done is indicated by the design contained within the circle. In the case of the symbol at left, it means that the power-cord plug must be unplugged from the outlet.

## ALWAYS OBSERVE THE FOLLOWING

### ⚠ WARNING

- Do not open (or modify in any way) the unit.

- Do not attempt to repair the unit, or replace parts within it (except when this manual provides specific instructions directing you to do so). Refer all servicing to your retailer, the nearest Roland Service Center, or an authorized Roland distributor, as listed on the "Information" page.

- Make sure you always have the unit placed so it is level and sure to remain stable. Never place it on stands that could wobble, or on inclined surfaces.

### ⚠ WARNING

- Never install the unit in any of the following locations.
- Subject to temperature extremes (e.g., direct sunlight in an enclosed vehicle, near a heating duct, on top of heat-generating equipment); or are
- Damp (e.g., baths, washrooms, on wet floors); or are
- Exposed to steam or smoke; or are
- Subject to salt exposure; or are
- Humid; or are
- Exposed to rain; or are
- Dusty or sandy; or are
- Subject to high levels of vibration and shakiness.

**⚠ WARNING**

- This unit, either alone or in combination with an amplifier and headphones or speakers, may be capable of producing sound levels that could cause permanent hearing loss. Do not operate for a long period of time at a high volume level, or at a level that is uncomfortable. If you experience any hearing loss or ringing in the ears, you should immediately stop using the unit, and consult an audiologist.



- Do not allow any objects (e.g., flammable material, coins, pins); or liquids of any kind (water, soft drinks, etc.) to penetrate the unit.



- Immediately turn the power off, and request servicing by your retailer, the nearest Roland Service Center, or an authorized Roland distributor, as listed on the "Information" page when:



- If smoke or unusual odor occurs
- Objects have fallen into, or liquid has been spilled onto the unit; or
- The unit has been exposed to rain (or otherwise has become wet); or
- The unit does not appear to operate normally or exhibits a marked change in performance.

- In households with small children, an adult should provide supervision until the child is capable of following all the rules essential for the safe operation of the unit.



**⚠ WARNING**

- Protect the unit from strong impact. (Do not drop it!)



- DO NOT play a CD-ROM disc on a conventional audio CD player. The resulting sound may be of a level that could cause permanent hearing loss. Damage to speakers or other system components may result.



**⚠ CAUTION**

- Try to prevent cords and cables from becoming entangled. Also, all cords and cables should be placed so they are out of the reach of children.



- Never climb on top of, nor place heavy objects on the unit.



- Disconnect all cords coming from external devices before moving the unit.



# IMPORTANT NOTES

## Power Supply

- Before connecting this unit to other devices, turn off the power to all units. This will help prevent malfunctions and/or damage to speakers or other devices.

## Placement

- Using the unit near power amplifiers (or other equipment containing large power transformers) may induce hum. To alleviate the problem, change the orientation of this unit; or move it farther away from the source of interference.
- This device may interfere with radio and television reception. Do not use this device in the vicinity of such receivers.
- Noise may be produced if wireless communications devices, such as cell phones, are operated in the vicinity of this unit. Such noise could occur when receiving or initiating a call, or while conversing. Should you experience such problems, you should relocate such wireless devices so they are at a greater distance from this unit, or switch them off.
- Do not expose the unit to direct sunlight, place it near devices that radiate heat, leave it inside an enclosed vehicle, or otherwise subject it to temperature extremes. Excessive heat can deform or discolor the unit.
- When moved from one location to another where the temperature and/or humidity is very different, water droplets (condensation) may form inside the unit. Damage or malfunction may result if you attempt to use the unit in this condition. Therefore, before using the unit, you must allow it to stand for several hours, until the condensation has completely evaporated.

## Maintenance

- For everyday cleaning wipe the unit with a soft, dry cloth or one that has been slightly dampened with water. To remove stubborn dirt, use a cloth impregnated with a mild, non-abrasive detergent. Afterwards, be sure to wipe the unit thoroughly with a soft, dry cloth.
- Never use benzene, thinners, alcohol or solvents of any kind, to avoid the possibility of discoloration and/or deformation.

## Additional Precautions

- Unfortunately, it may be impossible to restore the contents of data that was stored on a storage device (e.g., hard disk) once it has been lost. Roland Corporation assumes no liability concerning such loss of data.
- Use a reasonable amount of care when using the unit's buttons, sliders, or other controls; and when using its jacks and connectors. Rough handling can lead to malfunctions.
- When connecting / disconnecting all cables, grasp the connector itself—never pull on the cable. This way you will avoid causing shorts, or damage to the cable's internal elements.
- To avoid disturbing your neighbors, try to keep the unit's volume at reasonable levels. You may prefer to use headphones, so you do not need to be concerned about those around you (especially when it is late at night).
- When you need to transport the unit, package it in the box (including padding) that it came in, if possible. Otherwise, you will need to use equivalent packaging materials.
- Some connection cables contain resistors. Do not use cables that incorporate resistors for connecting to this unit. The use of such cables can cause the sound level to be extremely low, or impossible to hear. For information on cable specifications, contact the manufacturer of the cable.

## Handling CD-ROMs

- Avoid touching or scratching the shiny underside (encoded surface) of the disc. Damaged or dirty CD-ROM discs may not be read properly. Keep your discs clean using a commercially available CD cleaner.

## Copyright

- Recording, duplication, distribution, sale, lease, performance, or broadcast of copyrighted material (musical works, visual works, broadcasts, live performances, etc.) belonging to a third party in part or in whole without the permission of the copyright owner is forbidden by law.
  - This product can be used to record or duplicate audio or visual material without being limited by certain technological copy-protection measures. This is due to the fact that this product is intended to be used for the purpose of producing original music or video material, and is therefore designed so that material that does not infringe copyrights belonging to others (for example, your own original works) can be recorded or duplicated freely.
  - Do not use this unit for purposes that could infringe on a copyright held by a third party. We assume no responsibility whatsoever with regard to any infringements of third-party copyrights arising through your use of this unit.
- \* Microsoft, Windows and Windows Vista are registered trademarks of Microsoft Corporation.
- \* The screen shots in this document are used in compliance with the guidelines of the Microsoft Corporation.
- \* Windows® is known officially as: "Microsoft® Windows® operating system."
- \* Apple, Macintosh and Mac OS are registered trademarks of Apple Inc.
- \* ASIO is a registered trademark of Steinberg Media Technologies GmbH.
- \* MMP (Moore Microprocessor Portfolio) refers to a patent portfolio concerned with microprocessor architecture, which was developed by Technology Properties Limited (TPL). Roland has licensed this technology from the TPL Group.
- \* All product names mentioned in this document are trademarks or registered trademarks of their respective owners.

# Contents

<b>Check the contents of the package .....</b>	<b>8</b>
<b>Names of things and what they do.....</b>	<b>9</b>
Front panel .....	9
Side panels .....	10
Rear panel .....	13
<b>Driver installation and settings .....</b>	<b>15</b>
Windows Vista users .....	16
Installing the driver.....	16
Input/output device settings.....	19
Windows XP users.....	20
Installing the driver.....	20
Input/output device settings .....	23
Macintosh users .....	25
Installing the driver.....	25
Input/output device settings .....	26
Verifying that you hear sound.....	28
Connecting your audio playback system .....	28
Playing back the sample data.....	29
<b>Basic operation .....</b>	<b>31</b>
Listening to playback from your computer.....	31
Recording a mic .....	32
Recording a guitar .....	34
Recording audio from a cassette tape or record .....	35
Recording digital audio from your computer to a digital device .....	37
Recording digital audio from a CD/MD/DAT .....	38
<b>Troubleshooting .....</b>	<b>40</b>
Problems when installing the USB driver .....	40
Problems when using the UA-1G.....	44
Removing the driver .....	51
<b>Appendices.....</b>	<b>53</b>
About standard driver mode .....	53
Driver settings .....	54
<b>Main specifications .....</b>	<b>57</b>
<b>Index .....</b>	<b>58</b>

# Check the contents of the package

The UA-1G contains the following items. As soon as you open the package, check that all of these items are present. If anything is missing, please contact your dealer.

## UA-1G



## “UA-1G CD-ROM” driver CD-ROM

This contains the drivers needed to use the UA-1G.

## SONAR LE CD-ROM (for Windows)

- \* Do not touch or scratch the underside (recording surface) of the disc. Doing so may make the data unreadable. If the disc becomes dirty, clean it using a commercially available CD cleaner.
- \* Be sure to read the Readme file on the CD-ROM. Any last-minute information will be included in this file.
- \* Do not play back the CD-ROM in a conventional audio CD player. Doing so will produce sound at a high volume, which may damage your speakers or your hearing.

## Owner’s manual

This is the document you’re reading now. Keep it at hand for reference when needed.

### Other items you may need to provide

- An external amp, speakers, or headphones needed to hear the audio produced from the UA-1G are not included. Also not included are a mic, MD recorder, DAT recorder, or other audio source for inputting to the UA-1G. You’ll need to provide these items if necessary.
- Cables for connecting the UA-1G to your audio equipment are not provided. You’ll need to provide these separately.



# Names of things and what they do

## Front panel

You'll need to install the driver before you connect the UA-1G to your computer for the first time. Install the driver using the procedure described in "Driver installation and settings" (p. 15).



### 1 USB Cable

Connect this to a USB connector on your computer so that audio signals can be transferred between the UA-1G and your computer.

### 2 USB Indicator

After you connect the UA-1G to your computer, this indicator will light when your computer detects the UA-1G.

### 3 [INPUT LEVEL] Knob

This adjusts the volume of the audio being input from the mic input jack, INPUT jacks, or GUITAR/MIC jack.

### 4 IN Indicator

This will blink in time with the sound if an audio signal is being input via the mic input jack, INPUT jacks, or GUITAR/MIC jack.

### 5 PEAK Indicator

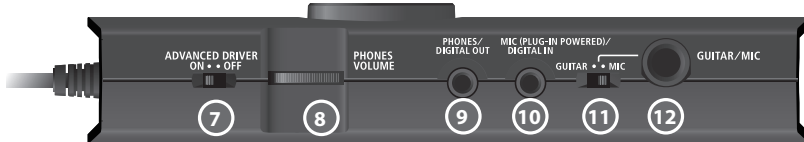
This will light if the audio input signal exceeds the allowable level.

### 6 OUT Indicator

This will blink in time with the sound if an audio signal is being output from the OUTPUT jacks or the PHONES/DIGITAL OUT jack.

## Side panels

### Left side



#### 7 [ADVANCED DRIVER] (mode select) Switch

This switches the operation mode between advanced mode (**ON**) and standard driver mode (**OFF**).

Normally, you can leave this set to advanced mode (**ON**).

\* If you've changed the setting of this switch, disconnect the UA-1G's USB cable from your computer and then reconnect it.

<b>ON (Advanced mode)</b>	This mode uses the dedicated driver. Using the dedicated driver lets you play and record audio with high quality and stable timing.
<b>OFF (Standard driver mode)</b>	This mode uses the standard driver provided by your computer's operating system. This is convenient when you don't have the dedicated driver at hand, or when you're unable to install the dedicated driver. However, the following limitations will apply. <ul style="list-style-type: none"><li>• The 96 kHz sampling frequency is not supported.</li><li>• The audio signal will have a 16-bit resolution.</li><li>• The ASIO driver is not supported.</li></ul>

#### 8 [PHONES VOLUME] Dial

This adjusts the volume of the headphone signal that is output from the PHONES/DIGITAL OUT jack.

\* The volume that is output from the digital output and the OUTPUT jacks cannot be adjusted.

## 9 PHONES/DIGITAL OUT Jack

This is a dual-purpose jack for headphone output and digital output.

- You can connect headphones to this jack. Even if headphones are connected, sound will still be output from the OUTPUT jacks.
- Connect an optical mini cable to this jack if you want to output a digital audio signal to a digital recorder or speakers that have a digital input connector.

## 10 MIC (PLUG-IN POWERED) / DIGITAL IN Jack

This is a dual-purpose input jack for connecting a condenser mic or a digital input source.

- A miniature condenser mic that requires a power supply, such as used with computers, can be connected here. This jack supplies 5V of power.
  - \* You must use a monaural mic that supports plug-in power. Use the [INPUT LEVEL] knob to adjust the volume.
- Connect an optical mini cable to this jack if you want to input a digital audio signal from a digital audio device.
  - \* You can't adjust the volume of the digital input.

## 11 [GUITAR/MIC] Switch

Set this to the **GUITAR** position if you've connected a guitar to the GUITAR/MIC jack, or to **MIC** if you've connected a dynamic mic. This switch changes the input level and impedance of the GUITAR/MIC jack.

## 12 GUITAR/MIC Jack

Connect a guitar or a monaural dynamic mic to this 1/4" phone jack.  
Use the [INPUT LEVEL] knob to adjust the volume.

## Right side

.....



### 13 INPUT Jacks

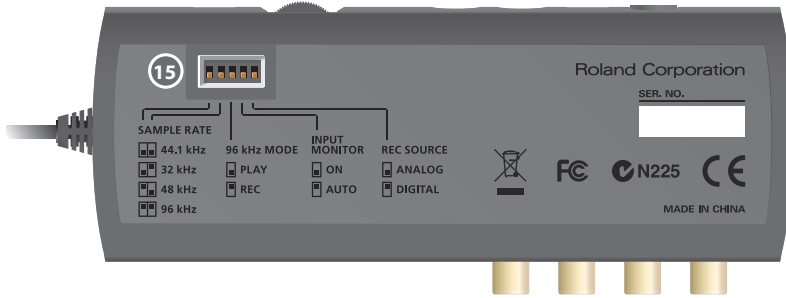
Connect these if you want to input audio signals from an audio device.  
Use the [INPUT LEVEL] knob to adjust the volume of the input signal.

### 14 OUTPUT Jacks

Connect these to the input jacks of your audio system, such as amplified speakers or a stereo set.

\* The volume that is output from these jacks cannot be adjusted on the UA-1G. You'll need to adjust the volume on the audio device to which the UA-1G is connected.

## Rear panel



## 15 Setting Switches

These are miniature switches that you can move upward or downward when you want to change various settings.

For the default settings, all switches are placed in the downward position.

### ● [SAMPLE RATE] Switches



#### SAMPLE RATE

- 44.1 kHz
- 32 kHz
- 48 kHz
- 96 kHz

This sets the sample rate used when recording or playing audio signals.

\* If you've changed the sample rate, disconnect the UA-1G's USB cable from your computer and then reconnect it.

\* Set the [SAMPLE RATE] switch to the same sample rate as that used by the connected digital device.

<b>44.1 kHz</b>	Switch A Down, Switch B Down	Record/play at 44.1 kHz
<b>32 kHz</b>	Switch A Down, Switch B Up	Record/play at 32 kHz
<b>48 kHz</b>	Switch A Up, Switch B Down	Record/play at 48 kHz
<b>96 kHz</b>	Switch A Up, Switch B Up	Record or play at 96 kHz

### ● [96 kHz MODE] Switch



#### 96 kHz MODE

- PLAY
- REC

When the sample rate setting is 96 kHz, the UA-1G can either record or play back (not both). Use this switch to choose the desired operation (recording or playback).

\* If you've changed this setting, disconnect the UA-1G's USB cable from your computer and then reconnect it.

<b>PLAY</b>	Switch Down	Playback can be performed. * It will not be possible to record.
<b>REC</b>	Switch Up	Recording can be performed. * It will not be possible to play back sound from your computer.

### ● [INPUT MONITOR] Switch



INPUT MONITOR

- ON
- AUTO

This specifies whether the audio signal received at the GUITAR/MIC jack, the MIC (PLUG-IN POWERED) / DIGITAL IN jack, and INPUT jacks will be output from the PHONES/DIGITAL OUT jack and the OUTPUT jacks.

<b>ON</b>	Switch Down	The audio input signal will be output directly from the PHONES/DIGITAL OUT jack and the OUTPUT jacks.
<b>AUTO (OFF)</b>	Switch Up	Use this setting if you don't want the audio input signal to be output directly from the PHONES/DIGITAL OUT jack and the OUTPUT jacks. If you're using ASIO 2.0 compatible software, you'll be able to switch the setting on/off from your software.

\* If the [REC SOURCE] switch (P.14) is set to **DIGITAL**, the PHONES/DIGITAL OUT jack and OUTPUT jacks will output the audio that was received in digital form at the MIC (PLUG-IN POWERED) / DIGITAL IN jack, regardless of the setting of this switch.

### ● [REC SOURCE] Switch



REC SOURCE

- ANALOG
- DIGITAL

This selects the audio input signal that will be sent via USB to your computer.

<b>ANALOG</b>	Switch Down	The analog audio signal received from the GUITAR/MIC jack, MIC (PLUG-IN POWERED) / DIGITAL IN jack, and INPUT jacks will be sent to your computer.
<b>DIGITAL</b>	Switch Up	The digital audio signal received from the MIC (PLUG-IN POWERED) / DIGITAL IN jack will be sent to your computer. * If no input signal is being received at the MIC (PLUG-IN POWERED) / DIGITAL IN jack, the audio signal being output from your computer via USB will pass through the UA-1G and return to the computer.

\* If the [REC SOURCE] switch is set to **DIGITAL** and a digital audio signal is being input to the MIC (PLUG-IN POWERED) / DIGITAL IN jack, it will not be possible to play back audio data from your computer.

# Driver installation and settings

The installation procedure and the settings will differ depending on your system. To perform the installation and make settings, follow the three steps listed below for your system.

	Windows Vista	Windows XP	Mac OS X
1. Install the driver ↓	P.16	P.20	P.25
2. Input/output device settings ↓	P.19	P.23	P.26
3. Verifying that you hear sound	P.28	P.28	P.28

## What is a driver?

A driver is software that transfers data between the UA-1G and the application software on your computer when the UA-1G is connected to your computer. The driver sends data from your application software to the UA-1G, and routes data from the UA-1G to your application software.

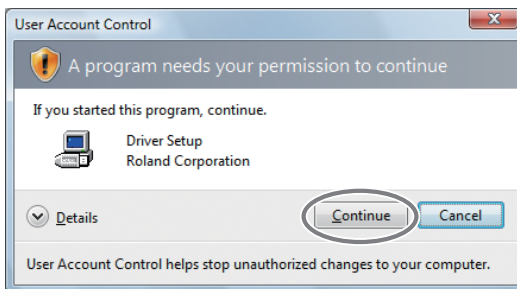
If you want to use the UA-1G in Standard driver mode, refer to “Installing the standard driver” (p. 53).

## Windows Vista users

Steps to be performed on the UA-1G itself are marked by a **Operation of the UA-1G** symbol.  
Do not connect the UA-1G to your computer until you are directed to do so.

### Installing the driver

1. Start up Windows without the UA-1G connected.
  - \* Disconnect all USB cables other than those for a USB keyboard and/or USB mouse (if used).
2. Close all currently running software.
3. Insert the included "UA-1G CD-ROM" into your CD-ROM drive.
  - \* If the auto-play dialog appears, click "**Open folder to see files.**"
4. On the **CD-ROM**, navigate to the Driver → Vista folder, and double-click the **Setup** icon.
  - \* If a message saying "**Driver installation must be performed by an administrator**" appears, log on to Windows as a user whose account has administrative privileges, and perform the installation again.
5. A confirmation screen regarding user account control will appear.  
Click [**Continue**].





**6.** The screen will indicate **“UA-1G Driver will be installed on your computer.”**

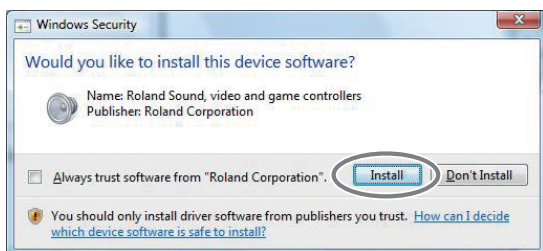
Click **[Next]**.

\* If any other message appears, proceed as directed by the message.

**7.** To begin the installation, click **[Next]** once again.

Installation will begin.

If a dialog box related to Windows security appears, click **[Install]**.



The screen will indicate **“Ready to install the driver.”**

\* If any other message appears, proceed as directed by the message.

**8.** **Operation of the UA-1G** Set the UA-1G's [ADVANCED DRIVER] switch to the **ON** position.

\* If the [ADVANCED DRIVER] switch is set to **OFF**, the installation will not take place as described in the following procedure.



**9.** **Operation of the UA-1G** Connect the UA-1G to your computer.

\* This unit is equipped with a protection circuit. A brief interval (a few seconds) after connecting the USB cable is required before the unit will operate normally.



**10.** The message **"Installing device driver software"** will appear in the lower right corner of the screen, and the driver will be installed automatically.

\* It may take some time (ten seconds or more) until the message appears.

\* If any other message appears, note the content of the message and close it.

**11.** When installation has been completed, the **Driver Setup** dialog box will indicate **"Installation has been completed."**

Click **[Close]** to close the **UA-1G Driver Setup** dialog box.

If the **System Settings Change** dialog box appears, click **[Yes]**. Windows will automatically restart.

Next, you need to set your software so it can use the UA-1G.

## Input/output device settings

In order to use the UA-1G with your software, you'll need to select the UA-1G as the audio input/output device. For details on how to do this, refer to the documentation for your software.

Audio output device	OUT (UA-1G)
Audio input device	IN (UA-1G)

- \* If you're using ASIO compatible software, select the UA-1G in the ASIO settings of your software.
- \* If you're unable to select the UA-1G as the audio input/output device in your software, it may be that a problem has occurred. Refer to "Troubleshooting" (p. 40).

## Settings when using the UA-1G in Windows Media Player

Some software such as Windows Media Player will use the system default playback/recording device for its audio input/output device.

Here's how to specify the UA-1G as the system default playback device so that it can be used with Windows Media Player.

- \* In a later step, you'll use Windows Media Player to play back sample data. Be sure to make the settings described below.

### 1. Open the **Control Panel**, click the **Hardware and Sound** and click **Sound**.

- \* If you're using the Classic view, double-click **Sound**.

### 2. Open the **Playback** tab, select the UA-1G's **OUT**, and click **[Set Default]**.

- \* If you're unable to select the UA-1G, refer to the troubleshooting section "Can't select/use the UA-1G device" (p. 44).

### 3. Click **[OK]** to complete the setting.

- \* If you select the UA-1G as the default device, audio alerts and other sounds from Windows will be output from the UA-1G; they will not be heard from your computer's speakers.

### Caution when recording or playing back with your software

Check the following points before you use the UA-1G to record or play back.

- Connect the UA-1G to your computer before you start up the software you're using.
- Do not disconnect the UA-1G's USB cable from your computer while your software is running. Close the software you're using before you disconnect the UA-1G's USB cable from your computer.

This completes driver installation and settings. Next, verify that you hear sound from the UA-1G.  
→ "Verifying that you hear sound" (p. 28).

## Windows XP users

Steps to be performed on the UA-1G itself are marked by a **Operation of the UA-1G** symbol.  
Do not connect the UA-1G to your computer until you are directed to do so.

### Installing the driver

1. Start up Windows without the UA-1G connected.
  - \* Disconnect all USB cables other than those for a USB keyboard and/or USB mouse (if used).
2. Close all currently running software.
3. Insert the included "UA-1G CD-ROM" into your CD-ROM drive.
4. In the **CD-ROM**, navigate to the Driver → XP folder, and double-click the **Setup** icon.
  - \* If the "**Install Program As Other user**" dialog box appears, click **[Cancel]** to terminate the installation, log on to Windows using an administrator account, and perform the installation once again.
5. The screen will indicate "**UA-1G Driver will be installed on your computer.**" Click **[Next]**.
  - \* If any other message appears, proceed as directed by the message.

**6.** To begin the installation, click **[Next]**.

If the **Software Installation** dialog box appears, click **[Continue Anyway]** to proceed with the installation.



\* If you are unable to proceed, click **[OK]** to halt the installation, and then change the settings as described in “Driver signing option settings (Windows XP)” (p. 42).

The screen will indicate “**Ready to install the driver.**”

\* If any other message appears, proceed as directed by the message.

**7.** **Operation of the UA-1G** Set the UA-1G’s [ADVANCED DRIVER] switch to the **ON** position.

\* If the [ADVANCED DRIVER] switch is set to **OFF**, the installation won’t take place as described in the following procedure.



8. **Operation of the UA-1G** Use a USB cable to connect the UA-1G to your computer.

\* This unit is equipped with a protection circuit. A brief interval (a few seconds) after connecting the USB cable is required before the unit will operate normally.



1. The message “**Found New Hardware**” will appear in the lower right corner of the screen, and the **Found New Hardware wizard** will appear.

\* It may take between ten seconds to several minutes until the **Found New Hardware Wizard** appears.

If you are asked whether you want to connect to Windows Update, choose **No** and click **[Next]**.



2. Choose **Install the software automatically (Recommended)**, and click **[Next]**.

3. If the **Hardware Installation** dialog box appears, click **[Continue Anyway]** to proceed with the installation.

\* If you are unable to proceed, click **[OK]** to halt the installation, and then change the settings as described in “Driver signing option settings (Windows XP)” (p. 42).

4. The screen will indicate “**Completing the Found New Hardware Wizard.**” Click **[Finish]**.

- When installation is complete, the **Driver Setup** dialog box will indicate **“Installation has been completed.”**

Click **[Close]** to close the **Driver Setup** dialog box.

If the **System Settings Change** dialog box appears, click **[Yes]** to restart Windows.

Next, you need to set your software so it can use the UA-1G.

## Input/output device settings

In order to use the UA-1G with your software, you must select the UA-1G as the audio input/output device. For details on how to make this setting, refer to the documentation for the software you’re using.

Audio output device	OUT (UA-1G)
Audio input device	IN (UA-1G)

- \* If you’re using ASIO compatible software, select the UA-1G in the ASIO settings of your software.
- \* If you’re unable to select the UA-1G as the audio input/output device for your software, a problem may have occurred. Refer to “Troubleshooting” (p. 40).

## Settings when using the UA-1G in Windows Media Player

Some software such as Windows Media Player will use the system default playback/recording device for its audio input/output device.

Here’s how to specify the UA-1G as the system default playback device so that it can be used with Windows Media Player.

- \* In a later step, you’ll use Windows Media Player to play back sample data. Be sure to make the settings described below.
- Open the **Control Panel**, click **Sounds, Speech, and Audio Devices**, and then click the **Sounds and Audio Devices**.
    - \* If you’re using the Classic view, double-click the **Sounds and Audio Devices** icon.
  - Click the **Audio** tab to open it, and in the **Sound playback** area, select **OUT (UA-1G)**.
    - \* If you’re unable to select the UA-1G, refer to the troubleshooting section “Can’t select/use the UA-1G device” (p. 44).

**3.** Click **[OK]** to complete the setting.

- \* If you select the UA-1G as the default device, audio alerts and other sounds from Windows will be output from the UA-1G; they will not be heard from your computer's speakers.

**Caution when recording or playing back with your software**

Check the following points before you use the UA-1G to record or play back.

- Connect the UA-1G to your computer before you start up the software you're using.
- Do not disconnect the UA-1G's USB cable from your computer while your software is running. Close the software you're using before you disconnect the UA-1G's USB cable from your computer.

This completes driver installation and settings. Next, verify that you hear sound from the UA-1G.

→ "Verifying that you hear sound" (p. 28)



## Macintosh users

Steps to be performed on the UA-1G itself are marked by a **Operation of the UA-1G** symbol.  
Do not connect the UA-1G to your computer until you are directed to do so.

### Installing the driver

- \* If the **Authenticate** dialog box or the dialog that indicates **“Installer requires that you type your password”** appears during the installation, enter your password and click **[OK]**.
  - \* What you actually see on the screen may differ depending on your system.
1. Start up Macintosh without the UA-1G connected.
    - \* Disconnect all USB cables other than those for a USB keyboard and/or USB mouse (if used).
  2. Close all currently running software.
  3. Insert the included “UA-1G CD-ROM” into your CD-ROM drive.
  4. In the **Driver** folder of the **CD-ROM**, double-click the **UM1GUSBDriver.pkg**.  
A message such as **“This package contains a program that...”** or **“This installer package needs to...”** may appear. If so, click **[Continue]**.
  5. The screen will indicate **“Welcome to the UA-1G Driver Installer.”**  
Click **[Continue]**.
  6. If the screen indicates **“Select a Destination,”** click the drive in which the operating system is installed to select it, and then click **[Continue]**.
    - \* Select your startup disk as the install-destination drive.
  7. The screen will indicate **“Easy Install”** or **“Standard Install.”**  
Click **[Install]** or **[Upgrade]**.
  8. The screen will indicate **“Installing this software requires you to restart your computer when the installation is done.”**  
Click **[Continue Installation]**.

**9.** The screen will indicate “**Click Restart to finish installing the software.**”

Click **[Restart]** to restart your Macintosh.

\* It may take some time for your Macintosh to restart.

**10.** **Operation of the UA-1G** After your Macintosh has started up, connect the UA-1G to the Macintosh. Set the UA-1G’s [ADVANCED DRIVER] switch to the **ON** position, and then connect it to the Macintosh.

\* This unit is equipped with a protection circuit. A brief interval (a few seconds) after connecting the USB cable is required before the unit will operate normally.

Next, you need to set your software so it can use the UA-1G.

## Input/output device settings

In order to use the UA-1G with your software, you’ll need to select the UA-1G as the audio input/output device. For details on how to do this, refer to the documentation for your software.

Audio output device	UA-1G 44.1kHz
Audio input device	UA-1G 44.1kHz

\* The “**44.1kHz**” in the device name will depend on the setting of the UA-1G’s [SAMPLE RATE] Switches (p. 13).

\* If you’re unable to select the UA-1G as the audio input/output device in your software, it may be that a problem has occurred. Refer to “Troubleshooting” (p. 40).

## Using the UA-1G with iTunes

Some software, such as iTunes, will use the audio input/output device that you select in the “Sound” preference settings.

Here’s how to specify the UA-1G as the sound output device so that it can be used with iTunes.

\* In a later step, you’ll use iTunes to play back sample data. Be sure to make the settings described below.

\* The content displayed may differ depending on your system.

1. In **System Preferences**, click **Sound**.
2. Click the **Output** tab.  
In **“Choose a device for sound output,”** choose **UA-1G 44.1kHz**.
  - \* The **“44.1kHz”** in the device name will depend on the setting of the UA-1G’s [SAMPLE RATE] Switches (p. 13).
  - \* If you’re unable to select the UA-1G, it may be that a problem has occurred. Refer to the Troubleshooting section **“Can’t select/use the UA-1G device”** (p. 44).
3. When you’ve finished making the setting, close System Preferences.

### **Caution when recording or playing back with your software**

Check the following points before you use the UA-1G to record or play back.

- Connect the UA-1G to your Macintosh before you start up the software you’re using.
- Do not disconnect the UA-1G’s USB cable from your Macintosh while your software is running. Close the software you’re using before you disconnect the UA-1G’s USB cable from your Macintosh.
- The UA-1G will not work with the Mac OS X Classic environment. Use the UA-1G when the classic environment is not running.

This completes driver installation and settings. Next, verify that you hear sound from the UA-1G.  
→ **“Verifying that you hear sound”** (p. 28)

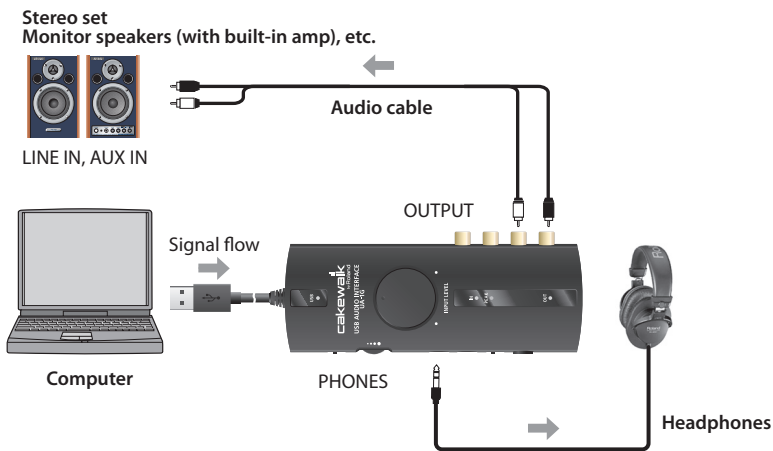
## Verifying that you hear sound

Now let's play back some sample data to verify that the connections and settings are correct.

- \* Before connecting the UA-1G to other equipment, you must turn the UA-1G's [PHONES VOLUME] dial and the volume controls of all devices to which the UA-1G is connected to their minimum settings to avoid malfunctions or speaker damage.
- \* In order for you to listen to the sample data, there must be at least 30 MB of free space on the hard disk on which your computer's operating system is installed.

## Connecting your audio playback system

As shown in the illustration, connect your headphones or monitor speakers so that you can hear the sound played back from the computer.



## Playing back the sample data

Here we will play back sample data using the standard functionality provided by your operating system. The sample data "Alright" (.wav) is in the included CD-ROM.

\* Copyright law prohibits you from using the song data included with this product for any purpose other than personal enjoyment unless you have obtained permission from the copyright holder. You may not copy this data or use it in a derivative work without permission from the copyright holder.

### 1. Prepare the CD-ROM.

Insert the included UA-1G CD-ROM into the CD-ROM drive of your computer.

### 2. From the **Sample** folder of the CD-ROM, copy the file **Alright (.wav)** to your desktop.

### 3. Set the UA-1G's [SAMPLE RATE] Switches (p. 13) to the **44.1 kHz** position.

\* After changing the sample rate, you must disconnect the UA-1G's USB cable from your computer and then reconnect it.

### 4. Play back the sample data "Alright" (.wav).

Double-click the **Alright (.wav)** file you copied to your desktop.

If you're using Windows, Windows Media Player will start. If you're using Macintosh, iTunes will start. Click the play button, and the sample data will start playing.

\* Depending on your system, other playback software may start up. If so, play the sample data as described in the documentation for the software you're using.

### 5. Adjust the volume.

If you're using headphones, use the UA-1G's [PHONES VOLUME] dial to adjust the volume.

If you've connected your audio playback system to the OUTPUT jacks or the PHONES/DIGITAL OUT jack, use the controls of your audio playback system to adjust the volume.

You should hear the sample data played from the headphones or speakers connected to the UA-1G.

\* If the [REC SOURCE] Switch (p. 14) is set to **DIGITAL** and a digital audio signal is being input to the MIC (PLUG-IN POWERED) / DIGITAL IN jack, audio data from the computer cannot be played back. Set the [REC SOURCE] switch to **ANALOG**.

**Did you hear the sample data?**

If you could hear the sample data, the UA-1G is correctly connected to your computer and the driver has been installed correctly.

If you could not hear the sample data, refer to “Troubleshooting” (p. 40). If there’s no sound, or if there’s something wrong with the playback, information provided in that section will help you solve the problem.

All connections and driver settings for the UA-1G are now complete.

Read the following sections as necessary.

- “Listening to playback from your computer” (p. 31)
- “Recording a mic” (p. 32)
- “Recording a guitar” (p. 34)
- “Recording audio from a cassette tape or record” (p. 35)
- “Recording digital audio from your computer to a digital device” (p. 37)
- “Recording digital audio from a CD/MD/DAT” (p. 38)

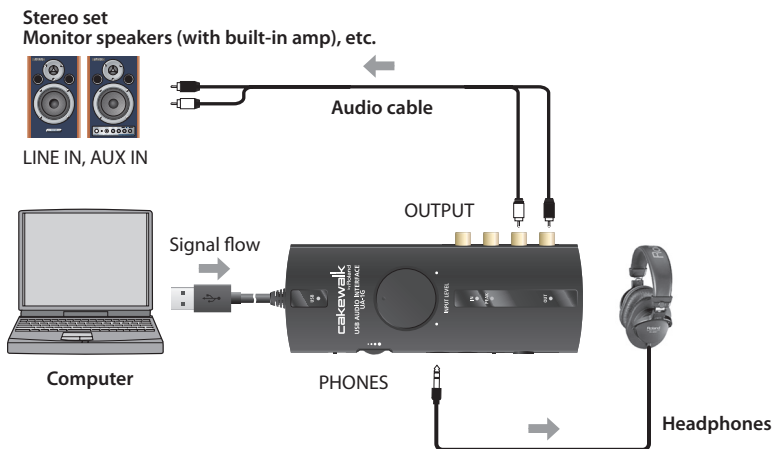
# Basic operation

This chapter explains various ways to connect the UA-1G for different purposes. These various purposes may require different software.

\* Before connecting the UA-1G to other equipment, you must turn the UA-1G's [PHONES VOLUME] dial and the volume controls of all devices to which the UA-1G is connected to their minimum settings to prevent malfunction and/or speaker damage.

## Listening to playback from your computer

By connecting headphones or monitor speakers as shown in the illustration, you can listen to the sound played back by the software you're using.



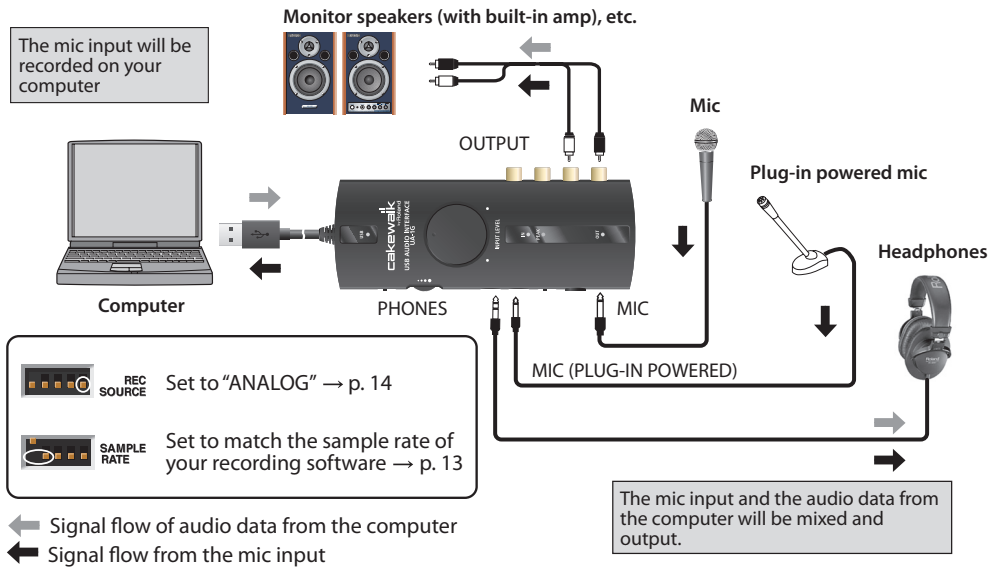
### Note

When you connect the UA-1G to your computer, you will no longer hear sound from your computer's speakers.

- Connect external monitor speakers to the UA-1G. Alternatively, connect headphones to the UA-1G.
- Disconnect the UA-1G from your computer when you want to play sound from your computer's speakers.

## Recording a mic

With the connections and settings described below, you can use a mic to sing along with audio data played by your computer, and use your software to record your voice into the computer.



### [GUITAR/MIC] Switch

Set to **MIC**.

### [SAMPLE RATE] Switch

Set to match the sample rate of the recording software you're using.

\* After changing the setting of the [SAMPLE RATE] switch, you must disconnect the UA-1G's USB cable from your computer and then reconnect it.

### [REC SOURCE] Switch

Set to **ANALOG**.

\* Minimize the volume of the connected monitor speakers or other audio equipment before you change the setting of the [REC SOURCE] switch.



## Input volume

Adjust the [INPUT LEVEL] knob until the level is as high as you can get it without causing the PEAK indicator to light.

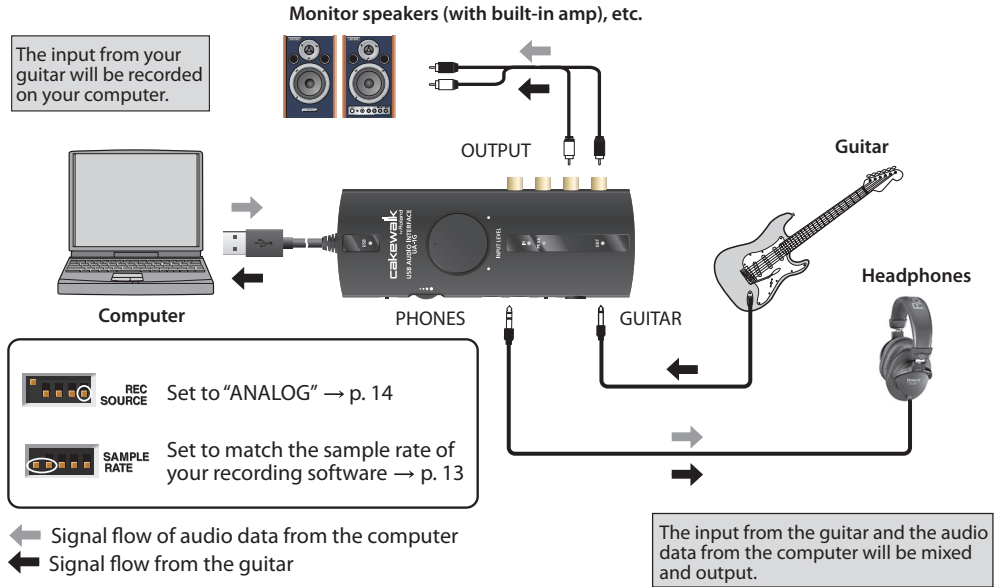
## Other points

- Howling could be produced depending on the location of microphones relative to speakers. This can be remedied by:
  1. Changing the orientation of the microphone(s).
  2. Relocating microphone(s) at a greater distance from speakers.
  3. Lowering volume levels.
- The UA-1G supports “plug-in powered mics” — miniature condenser microphones designed for connection to the mic jack of a computer or the recording jack of an MD (Mini Disc) player.

Only mics that support plug-in power can be connected to the MIC (PLUG-IN POWERED) / DIGITAL IN jack. Connecting an incompatible mic or a conventional stereo mini plug may damage the circuitry.
- If you connect a mic to the GUITAR/MIC jack, you must use a monaural dynamic mic.
- You can simultaneously input analog audio from both the GUITAR/MIC jack and the MIC (PLUG-IN POWERED) / DIGITAL IN jack. In this case as well, adjust the input level while you watch the PEAK indicator.

## Recording a guitar

Here's how to record your guitar performance into your computer.



### [GUITAR/MIC] Switch

Set to **GUITAR**.

### [SAMPLE RATE] Switch

Set to match the sample rate of the recording software you're using.

\* After changing the setting of the [SAMPLE RATE] switch, you must disconnect the UA-1G's USB cable from your computer and then reconnect it.

### [REC SOURCE] Switch

Set to **ANALOG**.

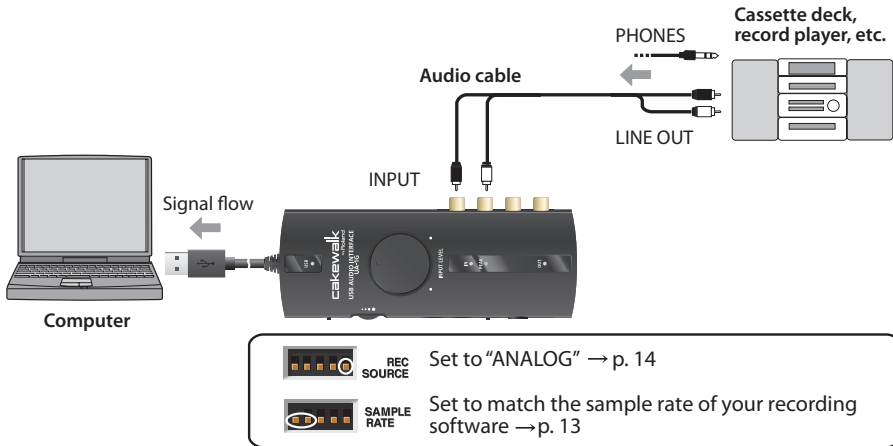
\* Minimize the volume of the connected monitor speakers or other audio equipment before you change the setting of the [REC SOURCE] switch.

### Input volume

Use the [INPUT LEVEL] knob to adjust the level of the input until it is as high as you can get it without causing the PEAK indicator to light.

## Recording audio from a cassette tape or record

Here's how to record the analog audio output from a cassette tape, record, or other audio device into your computer.



\* If you're using a record player, it's best to use a player that has a phono equalizer. If your record player does not have a phono equalizer, you'll need to run the signal through an amp that has a phono equalizer.

### [SAMPLE RATE] Switch

Set to match the sample rate of the recording software you're using.

\* After changing the [SAMPLE RATE] switch setting, you must disconnect the UA-1G's USB cable from your computer and then reconnect it.

### [REC SOURCE] Switch

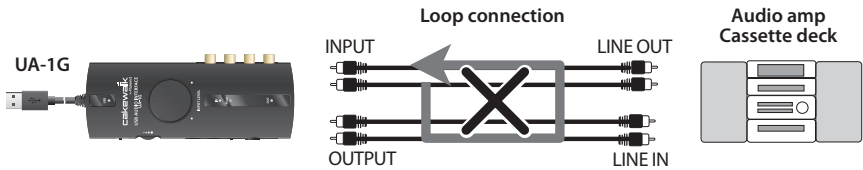
Set to **ANALOG**.

\* Minimize the volume of the connected monitor speakers or other audio equipment before you change the [REC SOURCE] switch setting.

### Input volume

Adjust the [INPUT LEVEL] knob until the level is as high as you can get it without causing the PEAK indicator to light.

### Be careful to avoid loop connections

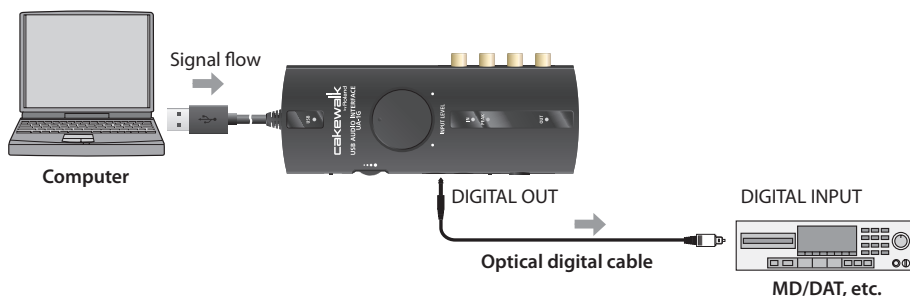


If the UA-1G is connected as shown in the above illustration with a device (such as a MD or DAT in record mode) that passes the audio input through to the output, an audio feedback loop will occur between the UA-1G and your device, possibly causing oscillation at an unexpectedly high volume.

Be careful to avoid making this type of connection, since it may cause malfunction or damage your speakers.

## Recording digital audio from your computer to a digital device

Here's how to record digital audio data from your computer to a digital audio device.



**SAMPLE RATE** Set to a sample rate that can be recorded by your recording device (e.g., MD player). Set this to match the sample rate of the audio data you're playing or the sample rate of your software. → p.13

### [SAMPLE RATE] Switch

Set to match the sample rate of your digital recording device and the sample rate of your playback software.

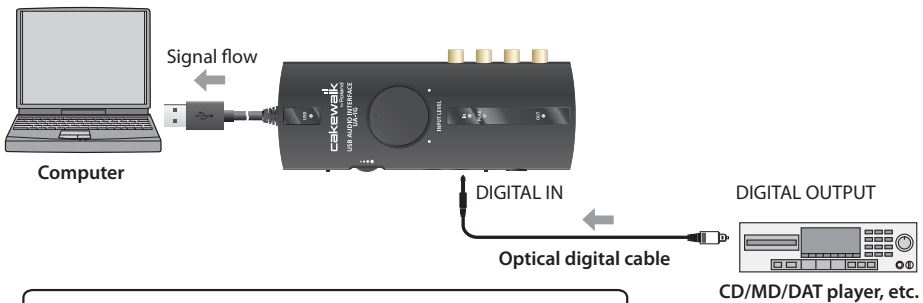
\* After changing the [SAMPLE RATE] switch setting, you must disconnect the UA-1G's USB cable from your computer and then reconnect it.



### Other points

- Don't connect anything to jacks that you're not using.
- The UA-1G does not support the audio format used by professional digital audio devices.
- The UA-1G is not able to mix the input signals from the various input jacks with the digital audio signal received at the MIC (PLUG-IN POWERED) / DIGITAL IN jack and output the mixed signal from the PHONES/DIGITAL OUT jack.

## Recording digital audio from a CD/MD/DAT

Here's how to record the digital audio output from your CD, MD, or DAT into your computer.



	Set to "DIGITAL." → p. 14
	Set to match the sample rate of your digital audio playback device. → p. 13

### [SAMPLE RATE] Switch

Set to match the sample rate of your digital audio playback device and the sample rate of your recording software.

Normally, you should select 48 kHz or 44.1 kHz for a DAT, and 44.1 kHz for an MD or CD. For details, refer to the documentation for the digital audio device or sequencer software you're using.

\* After changing the [SAMPLE RATE] switch setting, you must disconnect the UA-1G's USB cable from your computer and then reconnect it.

### [REC SOURCE] Switch

Set to **DIGITAL**.

\* Minimize the volume of the connected monitor speakers or other audio equipment before you change the [REC SOURCE] switch setting.

### Other points

- The UA-1G implements **SCMS**.

If a song containing copy-prohibit flags (such as a song you recorded from a CD to an MD) is digitally input via the MIC (PLUG-IN POWERED) / DIGITAL IN jack, you won't be able to record it to your computer. The sound will be output from the OUTPUT jacks and the PHONES/DIGITAL OUT jack.

**About SCMS**

SCMS (Serial Copy Management System) is a function implemented on consumer digital audio devices, such as DAT recorders and MD recorders, which protects the rights of the copyright owner by prohibiting second-generation copies via a digital connection. If you record via a digital connection from a SCMS-compliant digital recorder, SCMS flags will be recorded as part of the digital audio data. Digital audio data containing these flags cannot be re-recorded via a digital connection.

# Troubleshooting

If you experience problems, read this chapter first. It contains information that will help you solve the problem.

\* For help with Windows or Macintosh operation, refer to the documentation for your computer or operating system.

## Problems when installing the USB driver

### Can't install the driver successfully

Check the following items, and install the driver as described in "Driver installation and settings."

→ Windows Vista: p. 16, Windows XP: p. 20, Macintosh: p. 25

### Could the UA-1G's [ADVANCED DRIVER] switch be OFF?

Turn the UA-1G's [ADVANCED DRIVER] switch **ON**, and install the driver once again.

### Is the UA-1G connected correctly?

Make sure that the UA-1G is connected to a USB connector on your computer, or to a self-powered USB hub (a USB hub that has its own power supply or AC adaptor).

### Could other USB devices be connected?

Disconnect all USB devices (other than a mouse and keyboard, if used) from your computer before performing the installation.

### Did you log on to Windows with the appropriate user privileges?

You must log onto Windows using one of the following user names.

- A user name belonging to the Administrators group, such as Administrator
- A user name whose account type is Computer Administrator

\* For details, ask the system administrator for your computer.

### Could other software be running, perhaps in the background (such as anti-virus software)?

The installation may not occur correctly if other software is running. Be sure to close all other software before you perform the installation.

### Are there any devices labeled "Other," "Unknown," or "?/!/X" in the Device Manager? (Windows)

If driver installation was not completed successfully, the partially installed driver may remain in an incomplete state.

Uninstall the UA-1G driver as described in "Removing the driver" (p. 51), and then install the UA-1G once again as described in "Driver installation and settings" (p. 15).



---

### **Does your computer or USB hub have sufficient power supply capacity?**

The UA-1G will not work unless it is supplied with sufficient power. Make sure that the following situations do not apply.

- Operation may be unstable if you're using a computer that's running on a battery. If so, connect the computer's power supply.
- Your computer's energy conservation mode may restrict the power supplied via USB. Check the settings of your computer.
- The UA-1G cannot be used with a bus-powered USB hub (a hub that does not need a separate power supply). Use it with a self-powered USB hub (a hub that has an internal power supply or AC adaptor).

### **Is the CD-ROM inserted correctly in your CD-ROM drive?**

Make sure that the CD-ROM is correctly inserted in the CD-ROM drive.

### **Could the CD-ROM itself or the lens of your CD-ROM drive be dirty?**

The installer may not operate correctly if the CD-ROM or the lens of your CD-ROM drive is dirty. Use a commercially available CD cleaner or lens cleaner to clean the disc or lens.

### **Are you attempting to install from a networked CD-ROM drive?**

The driver cannot be installed from a CD-ROM drive on the network.

**"Found New Hardware Wizard" does not appear (Windows XP)**

### **Is the USB cable connected correctly?**

Make sure that the UA-1G is correctly connected to your computer.

After making the USB connection, it may take between ten seconds to several minutes for your computer to detect the UA-1G.

## Driver signing option settings (Windows XP)

**Driver installation may not be possible due to your settings for “Driver Signing Options.” Refer to the following, and make the appropriate settings.**

1. Open the **Control Panel**, click **Performance and Maintenance**, and then click the **System** icon.  
\* If you’re using the Classic view, double-click **System**.
2. Click the **Hardware** tab, and then click **[Driver Signing]**.  
The **Driver Signing Options** dialog box will appear.
3. In the **Driver Signing Options** dialog box, choose **Warn** or **Ignore**, and click **[OK]**.
4. Click **[OK]** to close the **System Properties** dialog box.
5. Install the driver as described in the procedure for “Windows XP users” (p. 20).  
\* Once you’ve finished installing the driver, change the driver signing options back to their original settings.

## “Found New Hardware Wizard” appears even though you’ve installed the driver (Windows XP)

**Could you have connected the UA-1G to a different USB connector than the one you used when installing the driver?**

If your computer or USB hub has two or more USB connectors, connecting the UA-1G to a different USB connector may cause your computer to ask for the driver file even though the driver has already been installed.

This behavior does not indicate a malfunction.

Install the driver as follows.

1. Connect the UA-1G’s USB cable to your computer.
2. In the lower right corner of your screen, the indication **“Found New Hardware”** will appear, and the **Found New Hardware Wizard** will appear.  
\* It may take some time before the **Found New Hardware Wizard** appears.

1. If you are asked whether you want to connect to Windows Update, choose **No** and click **[Next]**.
  2. Choose **Install the software automatically (Recommended)**, and click **[Next]**.
  3. If the **Install Hardware** dialog box appears, click **[Continue Anyway]** to continue the installation.
    - \* If you're unable to continue, click **[OK]** to temporarily quit the installation. Then change the settings as described in "Driver signing option settings (Windows XP)" (p. 42), and reinstall the driver.
  4. If **Completing the Found New Hardware Wizard** appears, click **[Finish]**.
3. The screen will indicate "**Completing the Found New Hardware Wizard.**" Click **[Finish]** to close the **Driver Setup** dialog box.
  4. If the **Change System Settings** dialog box appears, click **[Yes]** to restart Windows.

If you're unable to complete the installation by using the above procedure, uninstall the UA-1G driver as described in "Removing the driver" (p. 51), and then reinstall the driver as described in "Installing the driver" (p. 20).

A number such as "2-" appears at the beginning of the device name

### Could you have connected the UA-1G to a different USB port?

If you connect the UA-1G to a different USB port, some operating systems may automatically add a number to the beginning of the device name, but this should not be a problem when using the UA-1G.

If you want to return to the state in which the device name does not have this added number, you can either connect the UA-1G to the same USB port as when you installed it, or uninstall the UA-1G driver as described in "Removing the driver" (p. 51) and then reinstall it as described in "Driver installation and settings" (p. 15).

## Problems when using the UA-1G

### Can't select/use the UA-1G device

#### **Is the driver installed correctly?**

If you're unable to use the UA-1G even after installing the driver, it's possible that the driver was not installed correctly. Uninstall the UA-1G driver as described in "Removing the driver" (p. 51), and then reinstall it as described in "Driver installation and settings" (p. 15).

#### **Is the UA-1G device name shown?**

If the device name is not shown, close all software that uses the UA-1G, disconnect the UA-1G's USB cable, and then reconnect it.

If this does not solve the problem, uninstall the UA-1G driver as described in "Removing the driver" (p. 51), and then reinstall it as described in "Driver installation and settings" (p. 15).

#### **Could the computer to which the UA-1G is connected have entered standby (suspend) mode, hibernate mode, or sleep mode?**

If your computer enters standby (suspend), hibernate, or sleep mode while the UA-1G is connected, the UA-1G may not operate correctly when the computer returns to normal operation. Close all software that uses the UA-1G, disconnect the UA-1G's USB cable, and then reconnect it.

#### **Could you have disconnected and reconnected the USB cable while using the UA-1G?**

If you disconnect and reconnect the USB cable while using the UA-1G, it may stop operating correctly. In this case, close all software that uses the UA-1G, disconnect the UA-1G's USB cable, and then reconnect it. If this does not solve the problem, restart your computer.

#### **On some computers, the UA-1G may be unusable if it is already connected when Windows starts up.**

If so, connect the UA-1G after Windows has started up.

## Sound is interrupted during playback, or you experience dropouts or abnormalities in the sound

### There may be a problem with the audio buffer size of the software you're using.

First, adjust the audio buffer size in the software you're using. If you still experience dropouts or noise during playback or recording, adjust the driver's buffer size as described in "Driver settings" (p. 54).

\* Some software may not allow you to adjust the buffer size.

### Did you try changing the driver's audio input/output buffer size setting?

Changing the driver's audio input/output buffer size may solve the problem.

Try adjusting the buffer size as described in "Driver settings" (p. 54).

### Have you tried Windows Update or Microsoft Update? (Windows)

Try using Windows Update or Microsoft Update (provided by the Microsoft Corporation) to update your system to the latest version.

### Have you set the "Performance" setting? (Windows)

You may be able to solve the problem by changing the "Performance" setting of the system as described below.

#### Windows Vista users

1. Open the **Control Panel**, click **System and Maintenance**, and click **System**.
  - \* If you're using the Classic view, double-click the **System** icon.
2. In the list of tasks shown at the left, click **Advanced System Settings**.
3. A User Account Control dialog box will appear; click [**Continue**].
  - \* If you're asked to enter an administrator password, log on to Windows as a user whose account type is administrator, and make the setting again.
4. Click Performance [**Settings**], and click the **Advanced** tab.
5. Choose **Background services** and click [**OK**].
6. Click [**OK**] to close **System Properties**.

### Windows XP users

1. Open the **Control Panel**, click **Performance and Maintenance**, and double-click **System**.
  - \* If you're using the Classic view, double-click the **System** icon.
2. Click the **Advanced** tab, and click Performance **[Settings]**.
3. Click the **Advanced** tab.
4. Choose **Background services**, and click **[OK]**.
5. Click **[OK]** to close **System Properties**.

### Could other software programs be running?

Close software that you're not using.

If the window of a Windows program has been closed but it is still shown in the taskbar, that program is still running. Close all unneeded software that's shown in the taskbar.

### There may be a LAN-related problem.

Try disconnecting the LAN cable from your computer, or disabling the wireless LAN. If this solves the problem of dropouts in the sound, you may be able to solve the problem by updating your LAN driver.

### There may be a problem with your computer screen. (Windows XP)

You may be able to solve problems with noise in the audio playback by adjusting the settings of your graphics accelerator.

1. Open the **Control Panel**, and double-click **Display**.
  - \* If the Display icon is not shown, click **Appearance and Themes**, and then click Display.
2. Click the **Settings** tab, and click **[Advanced]**.
3. Click the **Troubleshoot** tab, adjust the **Hardware acceleration** slider, and click **[OK]**.
4. In **Display Properties**, click **[OK]** to close the dialog box. Then restart your computer.

### Did you make "Processor Performance" settings? (Macintosh)

You may be able to solve audio dropout problems by making the following setting.

\* On some Macintosh it may not be possible to set the "Processor Performance."

1. In **System Preferences**, click **Energy Saver**.
2. Click **Options**.
3. In the **Processor Performance** field, choose **Highest**.

## Cannot play/record

### Is the driver installed correctly?

Make settings as described in “Driver installation and settings” (p. 15).

### Did you make input/output device settings for your software?

Select the UA-1G in the audio driver settings of your software. Refer to the documentation for the software you’re using, and to the following pages.

Windows Vista:

“Input/output device settings” (p. 19)

Windows XP:

“Input/output device settings” (p. 23)

Mac OS X:

“Input/output device settings” (p. 26)

### Could your computer have entered standby (suspend), hibernate, or sleep mode during playback/recording?

If your computer enters standby (suspend), hibernate, or sleep mode during playback/recording, the UA-1G may stop operating correctly. Close all software that uses the UA-1G, disconnect the UA-1G’s USB cable, and then reconnect it.

If this does not solve the problem, restart your computer.

\* If your computer enters standby (suspend), hibernate, or sleep mode during playback/recording, try changing the power conservation settings of your computer. For details on how to do this, refer to your computer’s documentation.

### Could you have disconnected and reconnected the USB cable during playback/recording?

If you disconnect and reconnect the USB cable during playback/recording, it may become impossible to play back/record on the UA-1G. If this occurs, stop playback/recording, and then perform playback/recording once again. If you are still unable to play back or record, close all software that uses the UA-1G, disconnect the UA-1G’s USB cable, and then reconnect it.

### Do the sample rate settings match?

The sample rate setting of your software must match the sample rate setting of the UA-1G itself.

\* After changing the sample rate setting of the UA-1G itself, you must close all software that uses the UA-1G, disconnect the UA-1G’s USB cable from your computer, and then reconnect it.

## Could the UA-1G's sample rate be set to 96 kHz?

If the UA-1G's [SAMPLE RATE] switch is set to **96 kHz** and the [96 kHz MODE] switch is set to **REC**, you won't hear the audio playback from your software.

If the UA-1G's [SAMPLE RATE] switch is set to **96 kHz** and the [96 kHz MODE] switch is set to **PLAY**, you won't be able to record into your software from an instrument or audio device connected to the UA-1G.

## Could the system volume be turned down?

Try adjusting the volume of your system.

### Windows Vista users:

1. Open the **Control Panel**, and click **Hardware and Sound**.
  - \* If you're using the Classic View, click **Control Panel Home** to exit the Classic View.
2. In Sound, click **Adjust system volume**.
3. The Volume Mixer will appear. From the **Device** menu, select the UA-1G's **OUT** and adjust the volume.
4. Adjust the **Device** or **Application** volume.
  - \* If the **Mute** button is on, click the mute button once again to turn it off.
  - \* You can also access the volume mixer by right-clicking the speaker icon located in the bottom right corner of your screen, and choosing **Open Volume Mixer**.

### Windows XP users:

1. Open the **Control Panel**, and double-click **Sounds and Audio Devices**.
  - \* If you don't see the **Sounds and Audio Devices** icon, click **Sounds, Speech, and Audio Devices**, and then click **Sounds and Audio Devices**.
2. Click the **Audio** tab.
3. In the **Sound playback** area, make sure that **OUT (UA-1G)** is selected as the **Default device**, and click [**Volume**].
4. The **Volume Control** will appear; adjust the **Wave** volume.
  - \* If the **Mute** setting is checked, clear the check mark.

### Macintosh users:

1. In **System Preferences**, click **Sound**.
2. Click the **Output** tab.
3. In the **Choose a device for sound output** field, make sure that the UA-1G is selected, and use the **Output volume** slider to adjust the volume.
  - \* If **Mute** is checked, clear the check mark.



## Can't record via a digital connection

### **If you're recording digital audio data from a CD or MD, is the [REC SOURCE] switch set to DIGITAL?**

Set the [REC SOURCE] switch (P.14) to **DIGITAL**.

### **Do the sample rate settings match?**

Make sure that the sample rate in the audio settings of your software matches the sample rate setting of the UA-1G itself.

### **Could the audio data contain SCMS flags?**

The UA-1G complies with SCMS (P.39), so if data containing SCMS flags (such as an MD that was digitally copied from a commercial music CD) is input via the MIC (PLUG-IN POWERED) / DIGITAL IN jack, the UA-1G cannot record this data to your computer. The sound will be output from the OUTPUT jacks and the PHONES/DIGITAL OUT jack.

## There's noise in your guitar sound

### **Does the noise decrease when you lower the volume of your guitar?**

If the noise decreases when you lower the volume of your guitar, the pickups of your guitar may be picking up noise from your computer or display.

Move your guitar as far away from the computer as possible.

## Recorded volume is too low

### **Is the input level appropriate?**

Turn the [INPUT LEVEL] knob toward the right to increase the input level. If your software has an input level adjustment, check the input level setting.

### **Is the [GUITAR/MIC] switch set correctly?**

If you're recording from a mic connected to the [GUITAR/MIC] jack, make sure that the "[GUITAR/MIC] Switch" (p. 11) is set to **MIC**.

### **Could you be using a connection cable that contains a built-in resistor?**

If the cable you're using to connect to the INPUT jacks, GUITAR/MIC jack, or MIC (PLUG-IN POWERED) / DIGITAL IN jack contains a built-in resistor, the volume of the connected device may be too low. If so, use a connection cable that does not have a built-in resistor.

## Recorded volume is too high

### **Is the input level appropriate?**

Turn the [INPUT LEVEL] knob toward the left to decrease the input level. If your software has an input level adjustment, check the input level setting.

### **Is the [GUITAR/MIC] switch set correctly?**

If you're recording from a guitar connected to the [GUITAR/MIC] jack, make sure that the "[GUITAR/MIC] Switch" (p. 11) is set to **GUITAR**.

## Playback/recording stops unexpectedly, and subsequent playback/recording is not possible

### **While using the UA-1G, could you have performed an operation that required a large amount of processing, such as accessing the CD-ROM drive or network?**

If a heavy processing load is encountered while the UA-1G is in use, it may stop operating correctly. If this occurs, stop playback/recording, and then start playback/recording once again. If you are still unable to play back or record, close all sequencer software that is using the UA-1G, disconnect the UA-1G's USB cable from the computer, and then reconnect it.

## Operating system becomes unstable

### **Could you be starting your computer with the UA-1G already connected?**

On some computers, starting up the computer with a USB device already connected may cause the computer to operate unstably or fail to start up. If so, start up your computer with the UA-1G disconnected.

## Removing the driver

Your computer may fail to correctly recognize the UA-1G if the driver could not be installed according to the specified procedure. If so, you'll need to delete the driver that was detected by mistake. Use the following procedure to remove the driver, and then install the driver once again according to the procedure given in "Driver installation and settings" (p. 15).

### Windows users

\* The displayed content may differ depending on your system.

1. Start up Windows with the UA-1G disconnected.

Make sure that all USB cables other than those for a USB keyboard and USB mouse (if used) are disconnected.

Log on using a user name whose account type is computer administrator (such as Administrator).

2. Insert the included UA-1G CD-ROM into your computer's CD-ROM drive.

3. On the CD-ROM, navigate to the following folder and double-click **Uninstal.exe**

Windows Vista: **Driver\Vista\Uninstal.exe**

Windows XP: **Driver\XP\Uninstal.exe**

4. If you're using Windows Vista, a user account control warning will appear; click [**Continue**].

5. The screen will indicate "**The installed UA-1G Driver will be uninstalled.**" Click [**OK**].

If any other message appears, proceed as directed by the message.

6. The screen will indicate "**Uninstallation was completed.**" Click [**OK**] to restart Windows.

## Macintosh users

- \* The displayed content may differ depending on your system.
- 1. Start up your Macintosh with all USB cables disconnected.  
Make sure that all USB cables other than those for a USB keyboard and USB mouse are disconnected.
- 2. Insert the included UA-1G CD-ROM into the CD-ROM drive of your Macintosh.
- 3. Navigate to the CD-ROM's **Driver** folder, and double-click **UA1G\_Uninstaller**.
- 4. The screen will indicate "**This uninstalls UA-1G driver from this Macintosh**". Click **[Uninstall]**.  
If any other message appears, proceed as directed by the message.
- 5. The screen will indicate "**Are you sure to uninstall the driver?**" Click **[OK]**.
- 6. An **Authenticate** dialog box or the dialog that indicates "**Installer requires that you type your password**" will appear. Enter the password and click **[OK]**.
- 7. The screen will indicate "**Uninstallation is completed.**" Click **[Restart]** to restart your Macintosh.
  - \* It may take some time for the Macintosh to restart.

# Appendices

## About standard driver mode

Use this if you want to use the standard MIDI driver provided by your operating system.

## Installing the standard driver

1. Start up your computer with the UA-1G disconnected.  
Disconnect all USB cables other than those for a USB keyboard and USB mouse (if used).
2. Close any software that is running.
3. Set the UA-1G's [ADVANCED DRIVER] switch to **OFF**.
4. Connect the UA-1G to your computer.  
The driver will be installed automatically.

## Input/output device settings

In order to use the UA-1G with your software, you'll need to choose the UA-1G as the audio input/output device.

For details on how to make this setting, refer to the documentation of your software.

### Windows Vista users

<b>Audio output device</b>	Speakers (UA-1G)
<b>Audio input device</b>	Line (UA-1G)

\* For details on settings for using the UA-1G with Windows Media Player, refer to "Input/output device settings" (p. 19), and make the audio input/output settings as directed.

### Windows XP users

<b>Audio output device</b>	UA-1G
<b>Audio input device</b>	UA-1G

\* For details on settings for using the UA-1G with Windows Media Player, refer to "Input/output device settings" (p. 23), and make the audio input/output settings as directed.

### Macintosh (Mac OS X) users

<b>Audio output device</b>	UA-1G
<b>Audio input device</b>	UA-1G

\* For details on audio input/output settings for Mac OS X, refer to "Input/output device settings" (p. 26).

## Driver settings

The UA-1G's dedicated driver allows you to view or change the settings.

\* You cannot change the settings of the standard driver provided by the operating system ("About standard driver mode" p. 53).

### Viewing or changing the settings (Windows)

1. Connect the UA-1G to your computer.
2. Open the **Control Panel**, and double-click the **UA-1G** icon.
  - \* If you don't see the **UA-1G** icon, switch to the Classic View.
3. The **UA-1G Driver Settings** dialog box will appear.



### Audio Buffer Size

Normally, you should leave the buffer size at the fifth mark from the left.

- \* If you've changed the buffer size, you must restart the software that's using the UA-1G. Alternatively, if you're using software that has an audio device test function, execute the software's test function.
- \* Depending on the software you're using, its audio settings may also have a buffer size adjustment.

### **Use Smaller ASIO Buffer Size**

By selecting this check box, you can decrease the buffer size when using ASIO compatible software.

If you experience dropouts in the sound with this check box selected, clear the check box.

\* Clear this check box if you want to adjust the **Audio Buffer Size**.

### **Use ASIO Direct Monitor**

Select this check box if you want to use ASIO Direct Monitor functionality with your ASIO compatible software.

Set the [INPUT MONITOR] switch (P.14) located on the rear of the UA-1G to the **AUTO** position.

### **Show “README”**

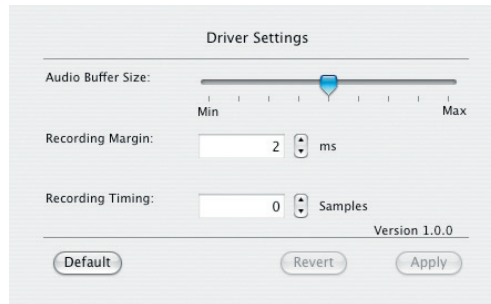
This displays the online manual for the driver.

### **Driver version**

This displays the version of the currently installed driver.

## Viewing or changing the settings (Macintosh)

1. Connect the UA-1G's USB cable to your Macintosh.
2. In **System Preferences**, click **UA-1G**.  
The Driver Settings screen will appear.



### Audio Buffer Size

This adjusts the driver's audio input/output buffer size.

If you experience dropouts or noise when playing or recording even after you have adjusted the audio buffer size in your software, try increasing this buffer size setting.

\* Some software does not allow you to adjust the buffer size.

### Recording Margin

If there are dropouts or noise in the recorded audio data even after you have adjusted the audio buffer size in your software and have also adjusted the **Audio Buffer Size**, try increasing this recording margin setting.

\* Some software does not allow you to adjust the buffer size.

### Recording Timing

Adjust this setting if the timing of the recorded audio data is incorrectly aligned.

\* If audio software is running, these settings will not be applied immediately even if you click **[Apply]**. Close all audio software; the settings will be applied the next time you start up the software.



# Main specifications

## UA-1G: USB Audio Interface

### ● Number of Audio Record/Playback Channels

Record: 1 pair of stereo

Play: 1 pair of stereo

REC SOURCE switch = ANALOG:

Full duplex (except for 96 kHz setting)

REC SOURCE switch = DIGITAL:

Recording only

### ● Signal Processing

PC interface: 24 bits

AD/DA Conversion: 24 bits (linear)

\* ADVANCE DRIVER switch = OFF: 16 bits

### ● Sampling Frequency

Digital output: 32/44.1/48/96 kHz

Digital input: 32/44.1/48/96 kHz

AD/DA Conversion: 32/44.1/48/96 kHz

\* ADVANCE DRIVER switch = OFF: 32/44.1/48 kHz

### ● Nominal Input Level

Line input jacks: -10 to +4 dBu

Mic input jack: -40 to -26 dBu

Guitar input jacks: -30 to -16 dBu

### ● Nominal Output Level

Line output jacks: -10 dBu

### ● Interface

USB (Type A)

Digital input connector (Optical mini type)

\* The same jack serves as both the Mic Input jack and digital input connector.

Digital output connector (Optical mini type)

\* The same jack serves as both the headphones jack and digital output connector.

\* conforms to IEC60958 consumer format

### ● Controllers

[ADVANCED DRIVER] Switch

[INPUT LEVEL] Knob

[PHONES VOLUME] Dial

[GUITAR/MIC] Switch

[SAMPLE RATE] Switches

[96 kHz MODE] Switch

[INPUT MONITOR] Switch

[REC SOURCE] Switch

### ● Connectors

INPUT Jacks (L, R) (RCA phono type)

OUTPUT Jacks (L, R) (RCA phono type)

GUITAR/MIC Jack: (1/4 inch phone type)

MIC (PLUG-IN POWERED) Jack (Plug-in powered miniature phono type)

DIGITAL IN Jack connector (Optical mini type)

\* The same jack serves as both the Mic Input jack and digital input connector.

PHONES Jack (Stereo miniature phone type)

DIGITAL OUT Jack (Optical mini type)

\* The same jack serves as both the headphones jack and digital output connector.

### ● Power Supply

Supplied from the computer

### ● Current Draw

200 mA

### ● Dimensions

160 (W) x 58 (D) x 28 (H) mm

6-5/16 (W) x 2-5/16 (D) x 1-1/8 (H) inches

### ● Weight

165 g / 6 oz

### ● Accessories

Owner's Manual

UA-1G CD-ROM

SONAR LE CD-ROM

\* 0 dBu = 0.775 Vrms

\* In the interest of product improvement, the specifications, appearance of this unit and/or contents of this package are subject to change without prior notice.

## Numerics

[96 kHz MODE] Switch ..... 13

## A

[ADVANCED DRIVER] Switch ..... 10

Advanced mode ..... 10

ANALOG ..... 14

ASIO ..... 14, 55

## B

Bus-powered USB hub ..... 41

## C

Cassette tape ..... 35

CD ..... 38

Condenser mic ..... 11

condenser microphones ..... 33

## D

DAT ..... 38

Device

    Other Device ..... 40

    Unknown Device ..... 40

DIGITAL ..... 14

Driver ..... 15

Driver Signing Options Settings ..... 42

Dynamic mic ..... 11, 33

## G

Guitar ..... 11, 34

GUITAR/MIC Jack ..... 11

[GUITAR/MIC] Switch ..... 11

## H

Headphone ..... 10–11, 31

## I

IN Indicator ..... 9

INPUT Jacks ..... 12

[INPUT LEVEL] Knob ..... 9

[INPUT MONITOR] Switch ..... 14

Installing the driver

    Macintosh ..... 25

    Windows Vista ..... 16

    Windows XP ..... 20

iTunes ..... 26

## L

Loop ..... 36

## M

Macintosh ..... 25

MD ..... 38

MIC ..... 11, 32

MIC (PLUG-IN POWERED) / DIGITAL IN Jack ..... 11

## O

Optical mini cable ..... 11

Other Device ..... 40

OUT Indicator ..... 9

OUTPUT Jacks ..... 12

## P

PEAK Indicator ..... 9

[PHONES VOLUME] Dial ..... 10

PHONES/DIGITAL OUT Jack ..... 11

## R

[REC SOURCE] Switch ..... 14

Record ..... 35

## S

[SAMPLE RATE] Switches ..... 13

SCMS ..... 39

Self-powered USB hub ..... 40

Speakers ..... 31

Standard driver mode ..... 10, 53

## U

Uninstall the driver

    Macintosh ..... 52

    Windows ..... 51

---

Unknown Device .....	40
USB Indicator .....	9

**W**

## Windows Media Player

Windows Vista .....	19
Windows XP .....	23
Windows Vista .....	16
Windows XP .....	20

# MEMO



This product complies with the requirements of EMC Directive 2004/108/EC.

For EU Countries

## FEDERAL COMMUNICATIONS COMMISSION RADIO FREQUENCY INTERFERENCE STATEMENT

For the USA

This equipment has been tested and found to comply with the limits for a Class B digital device, pursuant to Part 15 of the FCC Rules. These limits are designed to provide reasonable protection against harmful interference in a residential installation. This equipment generates, uses, and can radiate radio frequency energy and, if not installed and used in accordance with the instructions, may cause harmful interference to radio communications. However, there is no guarantee that interference will not occur in a particular installation. If this equipment does cause harmful interference to radio or television reception, which can be determined by turning the equipment off and on, the user is encouraged to try to correct the interference by one or more of the following measures:

- Reorient or relocate the receiving antenna.
- Increase the separation between the equipment and receiver.
- Connect the equipment into an outlet on a circuit different from that to which the receiver is connected.
- Consult the dealer or an experienced radio/TV technician for help.

This device complies with Part 15 of the FCC Rules. Operation is subject to the following two conditions:

- (1) this device may not cause harmful interference, and
- (2) this device must accept any interference received, including interference that may cause undesired operation.

Unauthorized changes or modification to this system can void the users authority to operate this equipment.  
This equipment requires shielded interface cables in order to meet FCC class B Limit.

For Canada

### NOTICE

This Class B digital apparatus meets all requirements of the Canadian Interference-Causing Equipment Regulations.

### AVIS

Cet appareil numérique de la classe B respecte toutes les exigences du Règlement sur le matériel brouilleur du Canada.

For C.A. US (Proposition 65)

### WARNING

This product contains chemicals known to cause cancer, birth defects and other reproductive harm, including lead.

For the USA

## DECLARATION OF CONFORMITY Compliance Information Statement

Model Name : UA-1G  
Type of Equipment : USB Audio Interface  
Responsible Party : Cakewalk, Inc.  
Address : 268 Summer Street Boston, MA 02210 USA  
Telephone : (617) 423-9004

**For EU Countries**



- UK** This symbol indicates that in EU countries, this product must be collected separately from household waste, as defined in each region. Products bearing this symbol must not be discarded together with household waste.
- DE** Dieses Symbol bedeutet, dass dieses Produkt in EU-Ländern getrennt vom Hausmüll gesammelt werden muss gemäß den regionalen Bestimmungen. Mit diesem Symbol gekennzeichnete Produkte dürfen nicht zusammen mit den Hausmüll entsorgt werden.
- FR** Ce symbole indique que dans les pays de l'Union européenne, ce produit doit être collecté séparément des ordures ménagères selon les directives en vigueur dans chacun de ces pays. Les produits portant ce symbole ne doivent pas être mis au rebut avec les ordures ménagères.
- IT** Questo simbolo indica che nei paesi della Comunità europea questo prodotto deve essere smaltito separatamente dai normali rifiuti domestici, secondo la legislazione in vigore in ciascun paese. I prodotti che riportano questo simbolo non devono essere smaltiti insieme ai rifiuti domestici. Ai sensi dell'art. 13 del D.Lgs. 25 luglio 2005 n. 151.
- ES** Este símbolo indica que en los países de la Unión Europea este producto debe recogerse aparte de los residuos domésticos, tal como está regulado en cada zona. Los productos con este símbolo no se deben depositar con los residuos domésticos.
- PT** Este símbolo indica que nos países da UE, a recolha deste produto deverá ser feita separadamente do lixo doméstico, de acordo com os regulamentos de cada região. Os produtos que apresentem este símbolo não deverão ser eliminados juntamente com o lixo doméstico.
- NL** Dit symbool geeft aan dat in landen van de EU dit product gescheiden van huishoudelijk afval moet worden aangeboden, zoals bepaald per gemeente of regio. Producten die van dit symbool zijn voorzien, mogen niet samen met huishoudelijk afval worden verwijderd.
- DK** Dette symbol angiver, at i EU-lande skal dette produkt opsamlles adskilt fra husholdningsaffald, som defineret i hver enkelt region. Produkter med dette symbol må ikke smides ud sammen med husholdningsaffald.
- NO** Dette symbolet indikerer at produktet må behandles som spesialavfall i EU-land, iht. til retningslinjer for den enkelte regionen, og ikke kastes sammen med vanlig husholdningsavfall. Produkter som er merket med dette symbolet, må ikke kastes sammen med vanlig husholdningsavfall.

- SE** Symbolen anger att i EU-länder måste den här produkten kasseras separat från hushållsavfall, i enlighet med varje regions bestämmelser. Produkter med den här symbolen får inte kasseras tillsammans med hushållsavfall.
- FI** Tämä merkintä ilmaisee, että tuote on EU-maissa kerättävä erillään kotitalousjätteistä kunkin alueen voimassa olevien määräysten mukaisesti. Tällä merkinnällä varustettuja tuotteita ei saa hävittää kotitalousjätteen mukana.
- HU** Ez a szimbólum azt jelenti, hogy az Európái Unióban ezt a terméket a háztartási hulladéktól elkülönítve, az adott régióban érvényes szabályozás szerint kell gyűjteni. Az ezzel a szimbólummal ellátott termékeket nem szabad a háztartási hulladék közé dobni.
- PL** Symbol oznacza, że zgodnie z regulacjami w odpowiednim regionie, w krajach UE produktu nie należy wyrzucać z odpadami domowymi. Produktów opatrzonych tym symbolem nie można utylizować razem z odpadami domowymi.
- CZ** Tento symbol udává, že v zemích EU musí být tento výrobek sbírán odděleně od domácího odpadu, jak je určeno pro každý region. Výrobky nesoucí tento symbol se nesmí vyhadzovat spolu s domácími odpadem.
- SK** Tento symbol vyjadruje, že v krajinách EÚ sa musí zber tohto produktu vykonávať oddelene od domového odpadu, podľa nariadení platných v konkrétnej krajine. Produkty s týmto symbolom sa nesmú vyhadzovať spolu s domovým odpadom.
- EE** See sümbol näitab, et EL-i maades tuleb see toode olemprügist eraldi koguda, nii nagu on iga piirkonnas määratletud. Selle sümboliga märgitud tooteid ei tohi ära visata koos olmeprügiga.
- LT** Šis simbolis rodo, kad ES šalyse šis produktas turi būti surenkamas atskirai nuo buitinių atliekų, kaip nustatyta kiekviename regione. Šiuo simboliu paženklinėti produktai neturi būti išmetami kartu su buitiniomis atliekomis.
- LV** Šis simbols norāda, ka ES valstīs šo produktu jāievāc atsevišķi no mājsaimniecības atkritumiem, kā noteikts katrā reģionā. Produkts ar šo simbolu nedrīkst izmest kopā ar mājsaimniecības atkritumiem.
- SI** Ta simbol označuje, da je treba proizvod v državah EU zbirati ločeno od gospodinskih odpadkov, tako kot je določeno v vsaki regiji. Proizvoda s tem znakom ni dovoljeno odlagati skupaj z gospodinskimi odpadki.
- GR** Το σύμβολο αυτό υποδηλώνει ότι στις χώρες της Ε.Ε. το συγκεκριμένο προϊόν πρέπει να συλλέγεται χωριστά από τα υπόλοιπα οικιακά απορρίμματα, σύμφωνα με όσα προβλέπονται σε κάθε περιοχή. Τα προϊόντα που φέρουν το συγκεκριμένο σύμβολο δεν πρέπει να απορρίπτονται μαζί με τα οικιακά απορρίμματα.

**For China**

## 有关产品中所含有害物质的说明

本资料就本公司产品中所含的特定有害物质及其安全性予以说明。

本资料适用于 2007 年 3 月 1 日以后本公司所制造的产品。

### 环保使用期限



此标志适用于在中国国内销售的电子信息产品，表示环保使用期限的年限。所谓环保使用期限是指在自制造日起的规

定期限内，产品中所含的有害物质不致引起环境污染，不会对人身、财产造成严重的不良影响。

环保使用期限仅在遵照产品使用说明书，正确使用产品的条件下才有效。

不当的使用，将会导致有害物质泄漏的危险。

### 产品中有毒有害物质或元素的名称及含量

部件名称	有毒有害物质或元素					
	铅(Pb)	汞(Hg)	镉(Cd)	六价铬(Cr(VI))	多溴联苯(PBB)	多溴二苯醚(PBDE)
外壳(壳体)	×	○	○	○	○	○
电子部件(印刷电路板等)	×	○	×	○	○	○
附件(电源线、交流适配器等)	×	○	○	○	○	○

○：表示该有毒有害物质在该部件所有均质材料中的含量均在 SJ/T11363-2006 标准规定的限量要求以下。

×：表示该有毒有害物质至少在该部件的某一均质材料中的含量超出 SJ/T11363-2006 标准规定的限量要求。

因根据现有的技术水平，还没有什么物质能够代替它。





\* 5 1 0 0 0 0 1 3 9 0 - 0 1 \*