

# UM-3G

## USB MIDI INTERFACE

Owner's Manual

**Before using this unit, carefully read the sections entitled: "USING THE UNIT SAFELY" and "IMPORTANT NOTES" (p. 3; p. 5). These sections provide important information concerning the proper operation of the unit. Additionally, in order to feel assured that you have gained a good grasp of every feature provided by your new unit, Owner's manual should be read in its entirety. The manual should be saved and kept on hand as a convenient reference.**



**Copyright © 2009 ROLAND CORPORATION**

**All rights reserved. No part of this publication may be reproduced in any form without the written permission of ROLAND CORPORATION.**




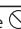


# USING THE UNIT SAFELY

## INSTRUCTIONS FOR THE PREVENTION OF FIRE, ELECTRIC SHOCK, OR INJURY TO PERSONS

About  WARNING and  CAUTION Notices





 <b>WARNING</b>	Used for instructions intended to alert the user to the risk of death or severe injury should the unit be used improperly.
 <b>CAUTION</b>	Used for instructions intended to alert the user to the risk of injury or material damage should the unit be used improperly. * Material damage refers to damage or other adverse effects caused with respect to the home and all its furnishings, as well to domestic animals or pets.

About the Symbols




	The  symbol alerts the user to important instructions or warnings. The specific meaning of the symbol is determined by the design contained within the triangle. In the case of the symbol at left, it is used for general cautions, warnings, or alerts to danger.
	The  symbol alerts the user to items that must never be carried out (are forbidden). The specific thing that must not be done is indicated by the design contained within the circle. In the case of the symbol at left, it means that the unit must never be disassembled.
	The  symbol alerts the user to things that must be carried out. The specific thing that must be done is indicated by the design contained within the circle. In the case of the symbol at left, it means that the power-cord plug must be unplugged from the outlet.

### ALWAYS OBSERVE THE FOLLOWING

#### WARNING


- Do not open or perform any internal modifications on the unit. 
- Do not attempt to repair the unit, or replace parts within it (except when this manual provides specific instructions directing you to do so). Refer all servicing to your retailer, the nearest Roland Service Center, or an authorized Roland distributor, as listed on the "Information" page. 
- Never install the unit in any of the following locations.
  - Subject to temperature extremes (e.g., direct sunlight in an enclosed vehicle, near a heating duct, on top of heat-generating equipment); or are 
  - Damp (e.g., baths, washrooms, on wet floors); or are 
  - Exposed to steam or smoke; or are
  - Subject to salt exposure; or are
  - Humid; or are
  - Exposed to rain; or are
  - Dusty or sandy; or are
  - Subject to high levels of vibration and shakiness.


#### WARNING


- Make sure you always have the unit placed so it is level and sure to remain stable. Never place it on stands that could wobble, or on inclined surfaces. 
- Do not allow any objects (e.g., flammable material, coins, pins); or liquids of any kind (water, soft drinks, etc.) to penetrate the unit.   

- Immediately turn the power off, and request servicing by your retailer, the nearest Roland Service Center, or an authorized Roland distributor, as listed on the "Information" page when:
  - If smoke or unusual odor occurs
  - Objects have fallen into, or liquid has been spilled onto the unit; or
  - The unit has been exposed to rain (or otherwise has become wet); or
  - The unit does not appear to operate normally or exhibits a marked change in performance.




**⚠ WARNING**


- In households with small children, an adult should provide supervision until the child is capable of following all the rules essential for the safe operation of the unit. 


- Protect the unit from strong impact. (Do not drop it!) 

- DO NOT play a CD-ROM disc on a conventional audio CD player. The resulting sound may be of a level that could cause permanent hearing loss. Damage to speakers or other system components may result. 

**⚠ CAUTION**

- Try to prevent cords and cables from becoming entangled. Also, all cords and cables should be placed so they are out of the reach of children. 

- Never climb on top of, nor place heavy objects on the unit. 

- Disconnect all cords coming from external devices before moving the unit. 

# IMPORTANT NOTES

## Power Supply

- Before connecting this unit to other devices, turn off the power to all units. This will help prevent malfunctions and/or damage to speakers or other devices.

## Placement

- This device may interfere with radio and television reception. Do not use this device in the vicinity of such receivers.
- Noise may be produced if wireless communications devices, such as cell phones, are operated in the vicinity of this unit. Such noise could occur when receiving or initiating a call, or while conversing. Should you experience such problems, you should relocate such wireless devices so they are at a greater distance from this unit, or switch them off.
- Do not expose the unit to direct sunlight, place it near devices that radiate heat, leave it inside an enclosed vehicle, or otherwise subject it to temperature extremes. Excessive heat can deform or discolor the unit.
- When moved from one location to another where the temperature and/or humidity is very different, water droplets (condensation) may form inside the unit. Damage or malfunction may result if you attempt to use the unit in this condition. Therefore, before using the unit, you must allow it to stand for several hours, until the condensation has completely evaporated.

## Maintenance

- For everyday cleaning wipe the unit with a soft, dry cloth or one that has been slightly dampened with water. To remove stubborn dirt, use a cloth impregnated with a mild, non-abrasive detergent. Afterwards, be sure to wipe the unit thoroughly with a soft, dry cloth.
- Never use benzine, thinners, alcohol or solvents of any kind, to avoid the possibility of discoloration and/or deformation.

## Handling CD-ROMs

- Avoid touching or scratching the shiny underside (encoded surface) of the disc. Damaged or dirty CD-ROM discs may not be read properly. Keep your discs clean using a commercially available CD cleaner.

## Additional Precautions

- Use a reasonable amount of care when using the unit's buttons, sliders, or other controls; and when using its jacks and connectors. Rough handling can lead to malfunctions.
- When connecting / disconnecting all cables, grasp the connector itself—never pull on the cable. This way you will avoid causing shorts, or damage to the cable's internal elements.
- To avoid disturbing your neighbors, try to keep the unit's volume at reasonable levels (especially when it is late at night).
- When you need to transport the unit, package it in the box (including padding) that it came in, if possible. Otherwise, you will need to use equivalent packaging materials.

\* Microsoft, Windows and Windows Vista are registered trademarks of Microsoft Corporation.

\* The screen shots in this document are used in compliance with the guidelines of the Microsoft Corporation.

\* Windows® is known officially as: "Microsoft® Windows® operating system."

\* Apple, Macintosh and Mac OS are registered trademarks of Apple Inc.

\* All product names mentioned in this document are trademarks or registered trademarks of their respective owners.

# Contents

USING THE UNIT SAFELY .....	3
IMPORTANT NOTES .....	5
<b>Contents of the Package .....</b>	<b>7</b>
<b>Names of Things and What They Do .....</b>	<b>8</b>
Front Panel .....	8
Rear Panel .....	10
<b>Getting Connected and Installing Drivers .....</b>	<b>11</b>
Before You Install the Driver .....	11
Windows Vista Users .....	12
Installing the Driver .....	12
Input/output Device Settings for Your Application.....	14
Windows XP Users .....	15
Installing the Driver .....	15
Input/output Device Settings for Your Application.....	18
Settings for Using the UM-3G with Windows Media Player.....	18
Macintosh Users .....	19
Installing the Driver .....	19
MIDI Device Settings .....	20
<b>Basic Use .....</b>	<b>24</b>
Basic Connections and MIDI Flow .....	24
Transmitting MIDI Messages from a MIDI Keyboard or Digital Piano to the Sequencer Software .....	24
Transmitting MIDI Messages from the Sequencer Software to a MIDI Sound Module or Digital Piano .....	25
Transmitting MIDI Messages from a MIDI Keyboard or Other Device to a MIDI Sound Module .....	26
<b>Troubleshooting .....</b>	<b>27</b>
Problems Related to USB Driver Installation .....	27
Problems When Using the UM-3G .....	31
Deleting the Driver .....	36
<b>Appendices .....</b>	<b>38</b>
Connecting Multiple UM-3G (or UM-3EX) Units .....	38
Installing the Driver .....	39
Connection Examples .....	43
<b>Main Specifications.....</b>	<b>46</b>
<b>Index .....</b>	<b>47</b>

# Contents of the Package

The UM-3G includes the following items. When you open the package, first make sure that all items are included. If any are missing, contact the dealer where you purchased the UM-3G.

## USB MIDI Interface UM-3G



## CD-ROM "UM-2G/UM-3G CD-ROM"

This contains drivers for use with the UM-3G.

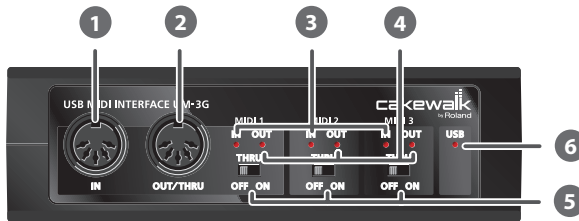
## Owner's Manual

This is the manual you are reading. Please keep it on hand for reference.

# Names of Things and What They Do

## Front Panel

You must install the driver before you connect the UM-3G to your computer for the first time. Install the driver as described in “Getting Connected and Installing Drivers” (p. 11).



### 1 MIDI IN Connector

Connect this to the MIDI OUT connector of the device (such as a MIDI keyboard) that will be transmitting MIDI messages to your computer.

### 2 MIDI OUT/THRU Connector

Connect these to the MIDI IN connectors of sound modules or other devices to which you'll be sending MIDI messages from your computer for playback.

### 3 MIDI IN Indicator

If the [MIDI THRU] switch is OFF, this indicator will light when MIDI messages are received from the device connected to MIDI IN connector.

### 4 MIDI OUT Indicator

If the [MIDI THRU] switch is OFF, this indicator will light when MIDI messages from the computer are being transmitted.

### 5 [MIDI THRU] Switch

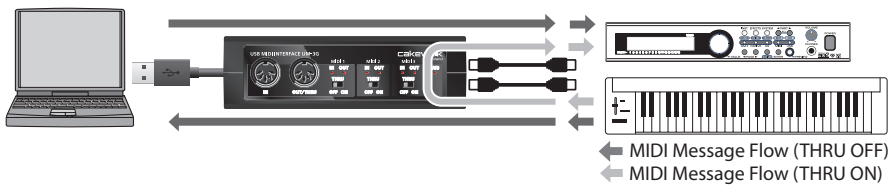
Specifies whether the UM-3G will be used as a master or a slave unit.



## [MIDI THRU] Switch ON/OFF setting

You can use the [MIDI THRU] switch to specify the destination of MIDI messages sent from the MIDI keyboard or digital piano connected to the MIDI IN connector.

Switch Setting	MIDI Message Destination Device
OFF	MIDI messages flowing in through the UM-3G's MIDI IN connector are routed to the computer (sequencer software). Ordinarily, you should use this setting.
ON	MIDI messages flowing in through the UM-3G's MIDI IN connector are output from the UM-3G's MIDI OUT connector. If you are not using sequencer software with your performances, set this to ON.

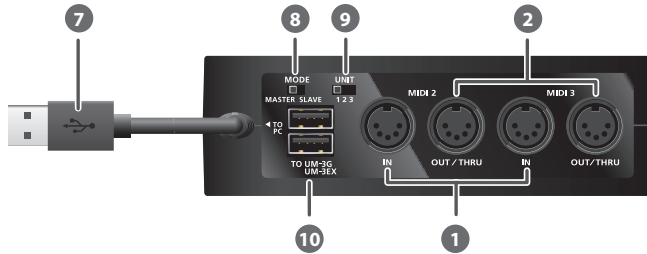


- \* You can change the setting of the [MIDI THRU] switch while the UM-3G is connected to the computer. There's no need to re-connect the UM-3G when doing so.
- \* Don't change the setting of the [MIDI THRU] switch while playback is in

## 6 USB Indicator

This will light when you've connected the UM-3G to your computer and your computer has detected the UM-3G.

## Rear Panel



### 7 USB Cable

Use this when connecting the UM-3G to your computer.

### 8 [MODE] Switch

The UM-3G can be set to function as either the master or a slave device by means of this switch.

Using a single UM-3G unit		MASTER
Using multiple UM-3G (or UM-3EX) units connected together	UM-3G connected to your computer	MASTER
	UM-3G (or UM-3EX) connected to the UM-3G/UM-3EX connector of the master UM-3G	SLAVE

\* Do not change the setting of the [MODE] switch while the UM-3G is connected to your computer. Before changing the setting of the [MODE] switch, you must first disconnect the UM-3G from the computer, change the setting of the switch, and then reconnect the UM-3G to your computer.

\* For details on connecting multiple UM-3G (or UM-3EX) units, refer to “Connecting Multiple UM-3G (or UM-3EX) Units” (p. 38).

### 9 [UNIT] Switch

Specifies the UM-3G’s UNIT number (p. 38).

To connect and use a multiple number of UM-3G units, you’ll need to set a different UNIT number for each UM-3G.

\* Do not change the setting of the [UNIT] switch while the UM-3G is connected. Before changing the setting of the [UNIT] switch, you must first disconnect the UM-3G from the computer, change the setting of the switch, and then reconnect the UM-3G to your computer.

### 10 UM-3G/UM-3EX Connectors

If you’re using additional UM-3G (or UM-3EX) units, connect them to these connectors.

\* Do not connect any device other than a UM-3G or UM-3EX to the UM-3G/UM-3EX connectors; doing so may cause malfunctions.

# Getting Connected and Installing Drivers

## What is a driver?

A "driver" is software that transfers data between the UM-3G and application software running on your computer, when your computer and the UM-3G are connected. The driver sends data from your application to the UM-3G, and from the UM-3G to your application.

## Before You Install the Driver

Here we will explain how to install the driver when using a single UM-3G unit.

You can simultaneously connect up to three UM-3G (or UM-3EX) units via USB to a single computer.

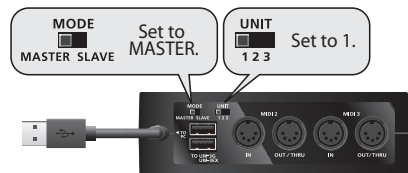
For details, refer to "Connecting Multiple UM-3G (or UM-3EX) Units" (p. 38).

\* Depending on your system, factors such as CPU processing speed and the performance of your hard disk, memory, and software may make it impossible to use two or more units simultaneously.

## Caution when making connections

Make the appropriate settings of the [MODE] switch and [UNIT] switch before you connect the UM-3G to your computer.

[MODE] switch	MASTER
[UNIT] switch	1



\* Do not change the setting of the [MODE] switch or [UNIT] switch while the UM-3G is connected. Before changing the setting of the [MODE] switch or [UNIT] switch, you must first disconnect the UM-3G from the computer, change the setting of the switches, and then reconnect the UM-3G to your computer.

The installation procedure will differ depending on your system.

Please proceed to one of the following sections, depending on the system you use.

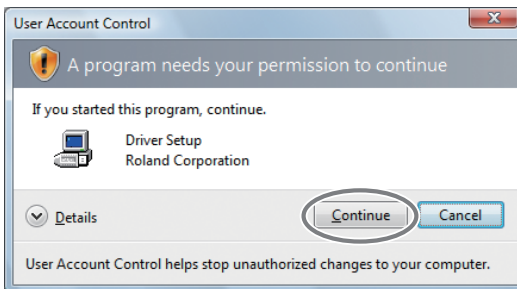
- Windows Vista users ..... p. 12
- Windows XP users ..... p. 15
- Macintosh (Mac OS X) users ..... p. 19

## Windows Vista Users

Steps to be performed on the UM-3G itself are marked by a **Operation of the UM-3G** symbol.  
Do not connect the UM-3G to your computer until you are directed to do so.

### Installing the Driver

1. Start up Windows without the UM-3G connected.
  - \* Disconnect all USB cables other than those for a USB keyboard and/or USB mouse (if used).
2. Close all currently running software.
3. Insert the included "UM-2G/UM-3G CD-ROM" into your CD-ROM drive.
4. In the **CD-ROM**, go to the appropriate folder as listed below, and double-click the **Setup** icon.  
**UM-3G\Driver\Vista\Setup.exe**
  - \* If a message saying "**Drivers must be installed by an administrator**" appears, log on to Windows as a user whose account has administrative privileges, and perform the installation again.
5. A confirmation screen regarding user account control will appear.  
Click [**Continue**].

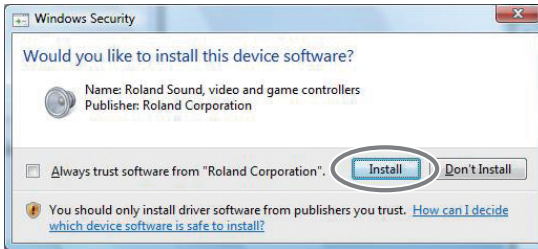


6. The screen will indicate "**The UM-3G Driver will be installed on your computer.**"  
Click [**Next**].
  - \* If any other message appears, proceed as directed by the message.

7. To begin the installation, click **[Next]** once again.

Installation will begin.

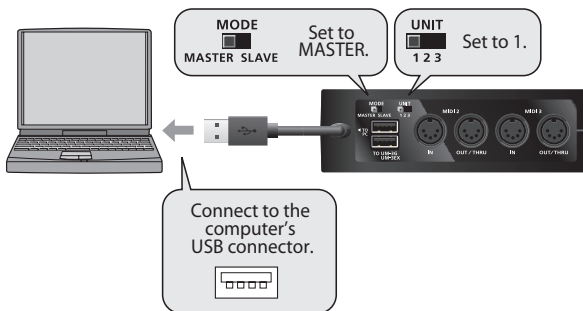
If a dialog box related to Windows security appears, click **[Install]**.



The screen will indicate **“Ready to install the driver.”**

\* If any other message appears, proceed as directed by the message.

8. **Operation of the UM-3G** Set the UM-3G’s [MODE] switch to **MASTER**.
9. **Operation of the UM-3G** Set the UM-3G’s [UNIT] switch to **1**.
10. **Operation of the UM-3G** Connect the UM-3G to your computer.



11. The message **“Installing device driver software”** will appear in the lower right corner of the screen, and the driver will be installed automatically.

\* It may take some time (ten seconds or more) until the message appears.

\* If any other message appears, note the content of the message and close it.

**12. When installation has been completed, the screen will indicate “Installation has been completed.”**

Click [**Close**] to close the **Driver Setup** dialog box.

If the **System Settings Change** dialog box appears, click [**Yes**]. Windows will automatically restart.

This completes the driver installation.

Next, you’ll need to make the input/output device settings for your application.

\* You won’t be able to use the UM-3G unless you’ve made these settings.

## Input/output Device Settings for Your Application

Specify the MIDI device that you’ll be using with your application. (For details on how to make these settings, refer to the instruction manual that came with your application.)

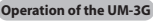
\* If you’re unable to select the UM-3G device in the device settings of your application, it may be that a problem has occurred. Refer to “Troubleshooting” (p. 27).

<b>MIDI OUT device</b>	1(UM-3G) 2(UM-3G) 3(UM-3G)
<b>MIDI IN device</b>	1(UM-3G) 2(UM-3G) 3(UM-3G)

\* The UM-3G’s unit number will be added to the actual device name.  
example: 1(UM-3G(1))

\* You can’t use the UM-3G’s MIDI input/output device in the Media Player application included with Windows.

## Windows XP Users

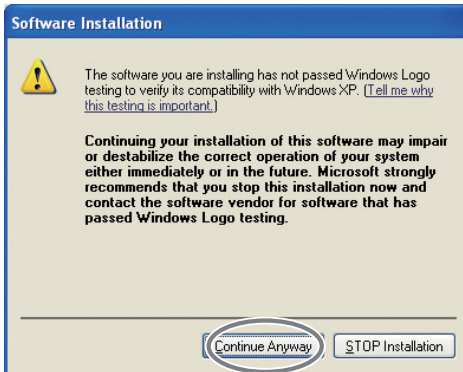
Steps to be performed on the UM-3G itself are marked by a  symbol.  
Do not connect the UM-3G to your computer until you are directed to do so.

### Installing the Driver

1. Start up Windows without the UM-3G connected.
  - \* Disconnect all USB cables other than those for a USB keyboard and/or USB mouse (if used).
2. Close all currently running software.
3. Insert the included "UM-2G/UM-3G CD-ROM" into your CD-ROM drive.
4. In the **CD-ROM**, go to the appropriate folder as listed below, and double-click the **Setup** icon.  
**UM-3G\Driver\XP\Setup.exe**
  - \* If the "Install Program As Other user" dialog box appears, click **[Cancel]** to terminate the installation, log on to Windows using an administrator account, and perform the installation once again.
5. The screen will indicate "The UM-3G Driver will be installed on your computer."  
Click **[Next]**.
  - \* If any other message appears, proceed as directed by the message.

6. To begin the installation, click **[Next]**.

If the **Software Installation** dialog box appears, click **[Continue Anyway]** to proceed with the installation.



\* If you are unable to proceed, click **[OK]** to halt the installation, and then change the settings as described in “Driver Signing Options Settings (Windows XP)” (p. 29).

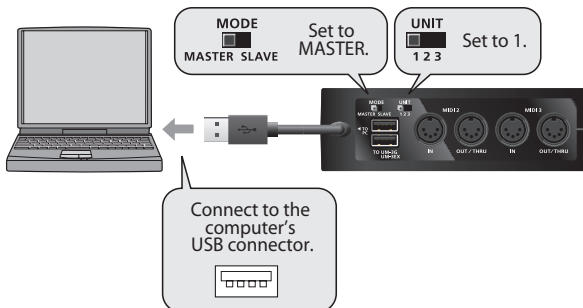
The screen will indicate “**Ready to install the driver.**”

\* If any other message appears, proceed as directed by the message.

7. **Operation of the UM-3G** Set the UM-3G’s [MODE] switch to **MASTER**.

8. **Operation of the UM-3G** Set the UM-3G’s [UNIT] switch to **1**.

9. **Operation of the UM-3G** Use a USB cable to connect the UM-3G to your computer.

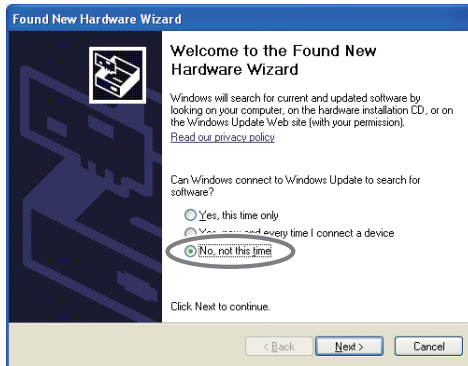




1. The message “**Found New Hardware**” will appear in the lower right corner of the screen, and the **Found New Hardware wizard** will appear.

- \* It may take between ten seconds to several minutes until the **Found New Hardware wizard** appears.

If you are asked whether you want to connect to Windows Update, choose **No** and click **[Next]**.



2. Choose **Install the software automatically (Recommended)**, and click **[Next]**.

3. If the **Hardware Installation** dialog box appears, click **[Continue Anyway]** to proceed with the installation.

- \* If you are unable to proceed, click **[OK]** to halt the installation, and then change the settings as described in “Driver Signing Options Settings (Windows XP)” (p. 29).

4. The screen will indicate “**Completing the Found New Hardware Wizard.**”  
Click **[Finish]**.

10. When installation is complete, the **Driver Setup** dialog box will indicate “**Installation has been completed.**”

Click **[Close]** to close the **Driver Setup** dialog box.

If the **System Settings Change** dialog box appears, click **[Yes]** to restart Windows.

This completes the driver installation.

Now proceed to make the following settings.

- \* You won’t be able to use the UM-3G unless you’ve made these settings.

## Input/output Device Settings for Your Application

You'll need to specify the MIDI device that you'll be using with your application. (For details on how to make these settings, refer to the instruction manual that came with your application.)

\* If you're unable to select the UM-3G device in the device settings of your application, it may be that a problem has occurred. Refer to "Troubleshooting" (p. 27).

<b>MIDI OUT device</b>	1(UM-3G) 2(UM-3G) 3(UM-3G)
<b>MIDI IN device</b>	1(UM-3G) 2(UM-3G) 3(UM-3G)

\* The UM-3G's unit number will be added to the actual device name.  
example: 1(UM-3G(1))

## Settings for Using the UM-3G with Windows Media Player

1. Open the **Control Panel**, click **Sounds, Speech, and Audio Devices**, and then click the **Sounds and Audio Devices**.

\* If you're using the Classic view, double-click the **Sound and Audio Devices** icon.

2. Click the **Audio** tab.

3. In the **MIDI Music Playback** field, click ▼ and select a MIDI device from the list that appears.

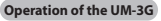
If you select "1(UM-3G(1))," the sound module connected to the UM-3G's MIDI 1 MIDI OUT/THRU connector can be played by Media Player.

\* The number "(1)" at the end of the device name is the UM-3G's UNIT number. This value will depend on the setting of the [UNIT] switch.

4. Click **[OK]** to close **Sounds and Audio Devices Properties**.

5. Start up **Windows Media Player**, and select and play a MIDI file.

## Macintosh Users

Steps to be performed on the UM-3G itself are marked by a  symbol. Do not connect the UM-3G to your computer until you are directed to do so.

### Installing the Driver

- \* If the **Authenticate** dialog box or **Enter password** dialog box appears during the installation, enter your password and click **[OK]**.
  - \* What you actually see on the screen may differ depending on your system.
1. Start up Macintosh without the UM-3G connected.
    - \* Disconnect all USB cables other than those for a USB keyboard and/or USB mouse (if used).
  2. Close all currently running software.
  3. Insert the included "UM-2G/UM-3G CD-ROM" into your CD-ROM drive.
  4. In the CD-ROM, go to the appropriate folder as listed below, and double-click the **UM3GUSBDriver.pkg**.  
**UM-3G\Driver\UM3GUSBDriver.pkg**

A message such as "**This package contains a program that...**" or "**This installer package needs to...**" may appear. If so, click **[Continue]**.
  5. The screen will indicate "**Welcome to the UM-3G Driver Installer.**"  
Click **[Continue]**.
  6. If the screen indicates "**Select a destination,**" click the drive in which the operating system is installed to select it, and then click **[Continue]**.
    - \* Select your startup disk as the install-destination drive.
  7. The screen will indicate "**Easy Install**" or "**Standard Install.**"  
Click **[Install]** or **[Upgrade]**.

8. The screen will indicate “**Installing this software requires you to restart your computer when the installation is done.**”

Click [**Continue Installation**].

9. The screen will indicate “**Click Restart to finish installing the software.**”

Click [**Restart**] to restart your Macintosh.

\* It may take some time for your Macintosh to restart.

This completes installation of the UM-3G driver.

Next, make MIDI device settings.

\* You won't be able to use the UM-3G unless you've made these settings.

## MIDI Device Settings

1. **Operation of the UM-3G** Set the UM-3G's [MODE] switch to **MASTER**.

2. **Operation of the UM-3G** Set the UM-3G's [UNIT] switch to 1.

\* Connect the UM-3G to a USB connector on the Macintosh itself. Do not connect it to the USB connector of your keyboard.

3. **Operation of the UM-3G** Connect the UM-3G to your Macintosh.

4. Open the **Applications** folder of your Macintosh hard disk. In the **Utilities** folder, double-click [**Audio MIDI Setup**] to open the **Audio MIDI Setup** dialog box.

The **Audio MIDI Setup** dialog box will appear.



5. Click the **MIDI Devices** tab.

**6. Confirm that 1:UM-3G appears in the Audio MIDI Setup dialog box.**

\* The number "1:" at the beginning of the device name is the UM-3G's unit number. This value will change depending on the setting of the [UNIT] switch.

\* If **1:UM-3G** does not appear or if it is grayed out, it means that the UM-3G is not being recognized properly. Click [**Rescan MIDI**]. Also try disconnecting and reconnecting the UM-3G.

\* Previous settings from installation of a different version of the driver may still remain. If this is the case, click on the grayed **1:UM-3G** to select it, then click [**Remove Device**] to delete the settings.



**7. Click [Add Device] three times. Three new external device will appear.**



**8. Specify the Device Name of the new external device.**

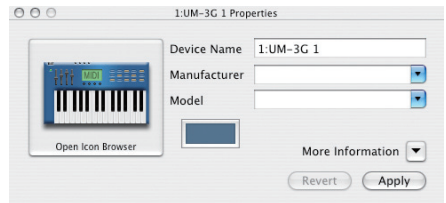
**1.** Click to select the newly added **New external device**, and then click [**Show Info**].

**2.** In the **Device Name** field, enter name.

<b>First external device</b>	1: UM-3G 1
<b>Second external device</b>	1: UM-3G 2
<b>Third external device</b>	1: UM-3G 3

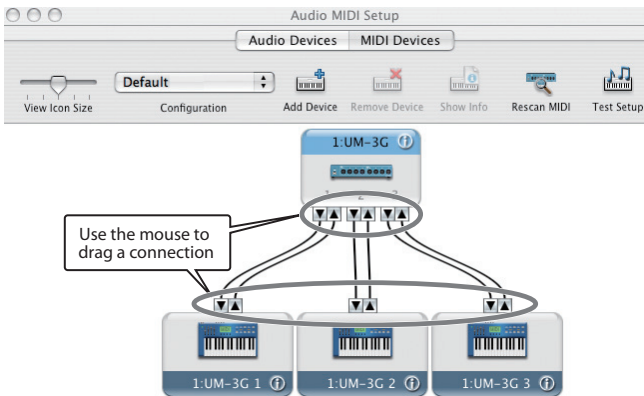
\* You can change the device name later.

\* The number "1:" at the beginning is the UM-3G's UNIT number.



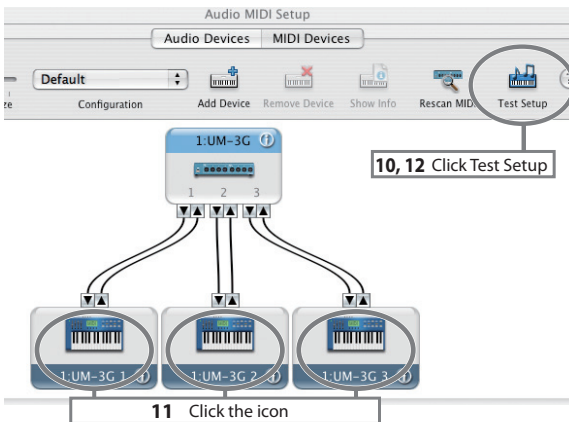
**3.** Click [**Apply**].

- Using your mouse, drag to connect the up/down arrows (which represent the input/output ports) so that they are connected in the following combination.



- Click [Test Setup].

- Click the UM-3G's downward arrow. If the MIDI OUT indicator of the corresponding port on the UM-3G blinks, the settings have been made correctly.



- Click [Test Setup] and complete the confirmation.

- Close the **Audio MIDI Setup** dialog box.

### **When using the UM-3G with your sequencer software**

Before using the UM-3G with your sequencer software, please note the following points.

- Connect the UM-3G to your Macintosh before you start up your sequencer software.
- Do not disconnect the UM-3G from your Macintosh while your sequencer software is running. Quit your sequencer software before you disconnect the UM-3G from your Macintosh.
- Select **UM-3G** for the **MIDI Driver** setting (as well as for other relevant items) within the software you're using.
- The UM-3G will not operate in the Mac OS X Classic environment. Use the UM-3G when the Classic environment is not running.

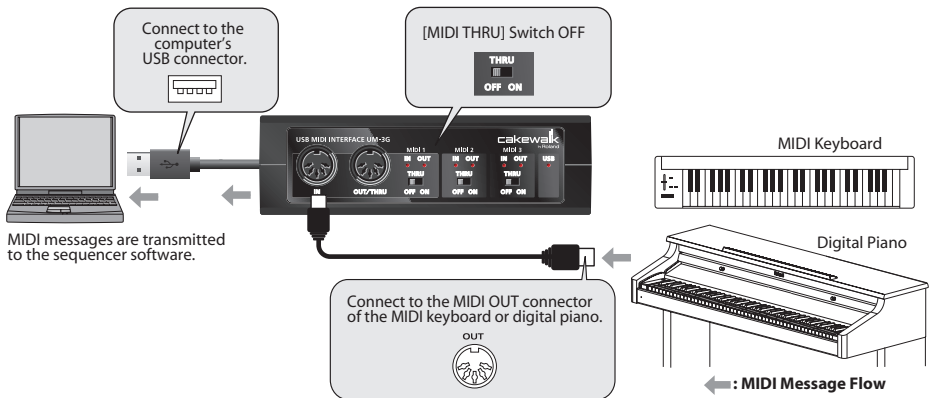
# Basic Use

This chapter describes different basic methods of connecting the UM-3G according to how the UM-3G is to be used.

## Basic Connections and MIDI Flow

### Transmitting MIDI Messages from a MIDI Keyboard or Digital Piano to the Sequencer Software

To transmit MIDI messages from a MIDI keyboard or digital piano to the sequencer software or make a MIDI recording of a keyboard performance or other performance using sequencer software on your computer, make the following connections and settings.



### MIDI device setting

In your sequencer software, select the MIDI device for the connector to which you connected your MIDI equipment (e.g., MIDI keyboard or digital piano).

### [MIDI THRU] switch setting

[MIDI THRU] switch	OFF
--------------------	-----

MIDI messages from the MIDI device (e.g., MIDI keyboard, digital piano) connected to the UM-3G's MIDI IN connector are transmitted to the computer.

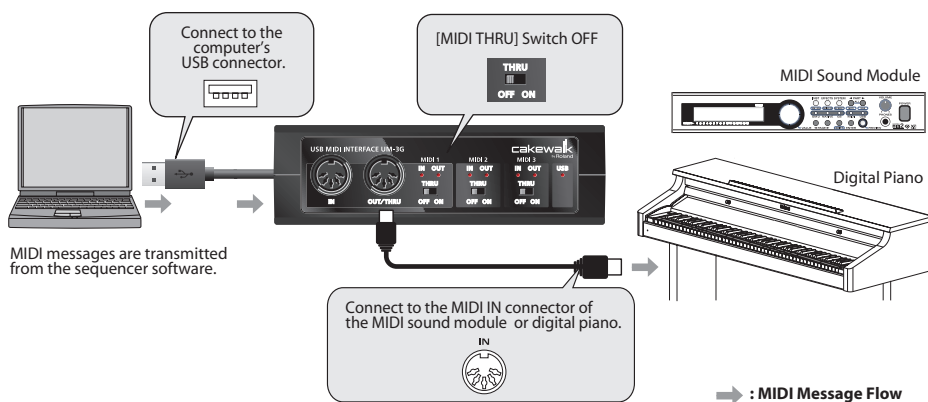
\* Don't change the setting of the [MIDI THRU] switch while you're using the UM-3G. Doing so will cause MIDI errors.



## Transmitting MIDI Messages from the Sequencer Software to a MIDI Sound Module or Digital Piano

If transmitting MIDI messages from the sequencer software to a MIDI sound module or digital piano, make the following connections and settings.

- \* Before making connections to other equipment, you must minimize the volume of all equipment in order to prevent malfunctions or speaker damage.



### MIDI device setting

In your sequencer software, select the MIDI device for the connector to which you connected your MIDI equipment (e.g., MIDI sound module, digital piano).

- \* If you want to use the UM-3G with the Media Player included with Windows, refer to p. 20 for details on settings.

### [MIDI THRU] switch setting

[MIDI THRU] switch	OFF
--------------------	-----

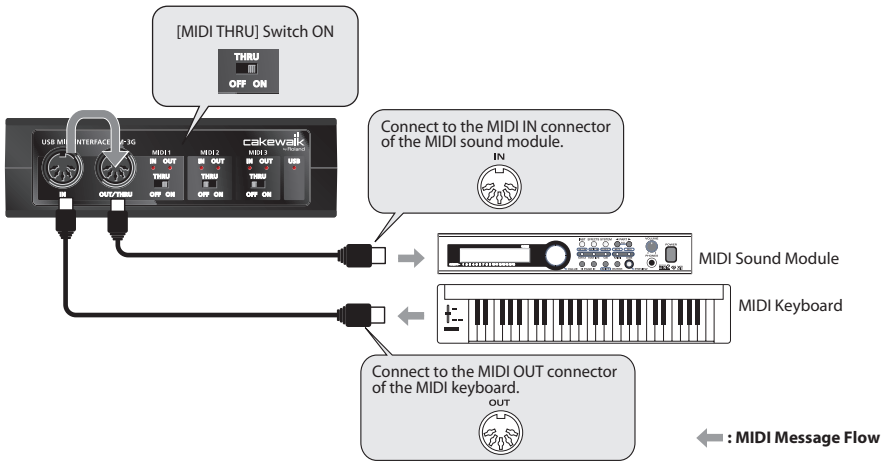
MIDI messages from your computer will be sent to the MIDI equipment (MIDI sound module, digital piano, etc.) connected to the UM-3G's MIDI OUT/THRU connector.

- \* Don't change the setting of the [MIDI THRU] switch while you're using the UM-3G. Doing so will cause MIDI errors.

## Transmitting MIDI Messages from a MIDI Keyboard or Other Device to a MIDI Sound Module

If you want to play a MIDI keyboard and send MIDI messages to a MIDI sound module, make the connections and settings shown below.

There is no need to connect the UM-3G to a computer.



### MIDI device setting

Since no computer is used, there is no need to make MIDI device settings.

### [MIDI THRU] switch setting

[MIDI THRU] switch	ON
--------------------	----

MIDI messages from the MIDI keyboard or digital piano connected to the UM-3G's MIDI IN connector will be sent to the MIDI sound module connected to the UM-3G's MIDI OUT connector. Even if the UM-3G is connected to a computer, no MIDI messages will be sent to the computer.

- \* Don't change the setting of the [MIDI THRU] switch while you're using the UM-3G. Doing so will cause MIDI errors.
- \* The MIDI IN indicator and MIDI OUT indicator will not light if the [MIDI THRU] switch is ON.

# Troubleshooting

If you experience problems, read this chapter first. It contains tips for solving most problems.

\* For details on operating your Windows or Macintosh computer, refer to the owner's manual of the computer and operating system you are using.

## Problems Related to USB Driver Installation

### Cannot Install the Driver Correctly

Install the UM-3G driver once again as described in "Getting Connected and Installing Drivers" (→ Windows Vista: p. 12, Windows XP: p. 15, Macintosh: p. 19).

#### **Is the UM-3G connected correctly?**

Make sure that the USB connector of your computer is connected to the UM-3G.

#### **Could any other USB device be connected?**

Before you install, disconnect all USB devices except for your mouse and keyboard.

#### **With what user privileges did you log on to Windows?**

You must log on to Windows as one of the following types of user.

- A user belonging to the Administrators group, such as Administrator
- A user whose account type is Computer Administrator

\* For more information, consult the system administrator of your computer.

#### **Could other software or resident software (such as antivirus programs) be running?**

Installation may not be successful if other programs are running.

Be sure to close all other programs before installation.

#### **In the Device Manager, do you see "Other device," "Unknown device," or a device for which "?", "!" or "x" is displayed? (Windows)**

If the driver installation could not be successfully completed, the installed driver may remain in an incomplete state.

Uninstall the UM-3G driver as described in "Deleting the Driver" (p. 36), and then reinstall the UM-3G driver as described in "Getting Connected and Installing Drivers" (p. 11).

### **Does your computer or USB hub have sufficient power supply capacity?**

The UM-3G cannot be connected if insufficient power is supplied to it. Check whether one of the following cases apply.

- If you are using the UM-3G with a notebook computer that is running on its battery, operation may be unreliable with some models of computer. If this is the case, connect the AC adaptor to your notebook computer.
- The power conservation mode of your computer may limit the power that is supplied to USB. Check the settings of your computer.
- In some cases, the UM-3G cannot be used with a bus-powered hub (a hub that does not contain a power supply). Please use a self-powered hub (a hub that contains a power supply).

### **Is the CD-ROM correctly inserted into your CD-ROM drive?**

Installation is not possible unless the CD-ROM included with the UM-3G is inserted in your CD-ROM drive. Make sure that the CD-ROM is correctly inserted into your CD-ROM drive.

### **Is the CD-ROM or the lens of the CD-ROM drive dirty?**

If the CD-ROM or the lens of the CD-ROM drive is dirty, the installer may not work correctly. Clean the disc and/or lens using a commercially-available CD cleaner or lens cleaner.

### **Are you attempting to install from a networked CD-ROM drive?**

You cannot install from a networked CD-ROM drive.

## **“Found New Hardware Wizard” does not Appear (Windows XP)**

### **Is the USB cable connected correctly?**

Make sure that the UM-3G is correctly connected to your computer.

After making the USB connection, it may take between ten seconds to several minutes until the UM-3G is detected.

## Driver Signing Options Settings (Windows XP)

**In some cases, you may be unable to install the driver because of the “Driver Signing Options” settings. Make settings as follows.**

1. Open the **Control Panel**, click **Performance and Maintenance**, and then click the **System** icon.
  - \* If you’ve selected Classic view, double-click **System**.
2. Click the **Hardware** tab, and then click **[Driver Signing]**.  
The **Driver Signing Options** dialog box will open.
3. In the **Driver Signing Options** dialog box, select **Warn** or **Ignore**, and then click **[OK]**.
4. Click **[OK]** to close the **System Properties** dialog box.
5. Install the driver as described in “Windows XP Users” (p. 15).
  - \* When you’ve completed the installation, return the Driver Signing setting to its original state.

## “Found New Hardware Wizard” Appears Even though You Installed the Driver (Windows XP)

**On the UM-3G unit connected to the computer, could the MODE select switch be set to SLAVE?**

Set the UM-3G’s [MODE] switch to **MASTER**, and then reconnect it.

**Did you connect the UM-3G to a different USB connector than the one you used when installing the driver?**

If your computer or USB hub has two or more USB connectors, and you connect the UM-3G to a different USB connector, you may be asked for the driver file even though the driver has already been installed in your computer. (Such a response does not indicate a malfunction.)

Proceed as follows to install the driver.

1. Use a USB cable to connect the UM-3G to your computer.

2. In the lower-right corner of the screen, the message “**Found New Hardware**” will appear. Please wait until the **Found New Hardware Wizard** appears.
  - \* It may take some time for the **Found New Hardware Wizard** to appear.
  1. If you are asked whether you want to connect to Windows Update, choose **No** and then click [**Next**].
  2. Choose **Install the software automatically (Recommended)** and click [**Next**].
  3. If the **Hardware Installation** dialog box appears, click [**Continue Anyway**] to proceed with the installation.
    - \* If you are unable to continue, click [**OK**] to stop the installation, and refer to “Driver Signing Options Settings (Windows XP)” (p. 29) and then reinstall the driver.
  4. When the screen indicates **Completing the Found New Hardware Wizard**, click [**Finish**].
3. The screen will indicate “**Installation complete.**”  
Click [**Close**] to close the Driver Setup dialog box.
4. If the **System Settings Change** dialog box appears, click [**Yes**]. Windows will restart.  
  
If you were unable to complete the installation with the above procedure, uninstall the UM-3G driver as described in “Deleting the Driver” (p. 36), and then reinstall the driver as described in “Getting Connected and Installing Drivers” (p. 11).

## A Numeral Such as “2- ” Has Started Appearing at the Beginning of the Device Name

If you’ve connected the UM-3G to a different USB port, or connected a second or third UM-3G (or UM-3EX) unit, the operating system may automatically add a number such as “2-” or “3-” to the beginning of the device name. This is not a problem when using the UM-3G (or UM-3EX); you can simply continue using it.

\* If you’re using only one UM-3G unit, you can return to an unnumbered device name by either connecting the UM-3G to the same USB port as when you installed it, or by uninstalling the UM-3G driver as described in “Deleting the Driver” (p. 36) and then reinstalling the driver as described in “Driver Installation and Settings” (p. 11).

## Problems When Using the UM-3G

### Can't Select or Use the UM-3G Device

#### **Is the driver installed correctly?**

If you can't use the UM-3G even though you've installed the driver, it is possible that the driver was not installed correctly. Uninstall the UM-3G driver as described in "Deleting the Driver" (p. 36), and then reinstall the driver as described in "Getting Connected and Installing Drivers" (p. 11).

#### **Is the UM-3G's MIDI device name shown?**

If the device name is not shown, close all applications that are using the UM-3G, disconnect the UM-3G's USB cable, and then reconnect it.

If this does not solve the problem, Uninstall the UM-3G driver as described in "Deleting the Driver" (p. 36), and then reinstall the driver as described in "Getting Connected and Installing Drivers" (p. 11).

#### **Could your computer have entered Standby (Suspend) mode, Hibernate mode, or Sleep mode while the UM-3G was connected?**

If your computer enters Standby (Suspend), Hibernate, or Sleep mode while the UM-3G is connected, it may stop operating correctly. Close all applications that are using the UM-3G, disconnect the UM-3G's USB cable, and then reconnect it.

#### **Could you have disconnected and reconnected the USB cable while using the UM-3G?**

If you disconnect and reconnect the USB cable while using the UM-3G, it may stop operating correctly. In this case, close all applications that are using the UM-3G, disconnect the UM-3G's USB cable, and then reconnect it. If this does not solve the problem, restart your computer.

#### **On some computers, the driver will not be loaded correctly if the UM-3G is already connected when Windows starts up, so that the UM-3G will not be usable via USB.**

In this case, connect the UM-3G after Windows has started up.

#### **Are you using the Media Player included with Windows Vista?**

In Windows Vista, the UM-3G cannot be selected from the Media Player.

## Sound is Interrupted During MIDI Playback

**You may be able to resolve this problem by changing the settings that determine the “Performance” of the System (Windows).**

Proceed as follows to change the setting.

### **Windows Vista users**

1. Open the **Control Panel**, click **System and Maintenance**, and then click **System**.
  - \* If you're using the Classic view, double-click the **System** icon.
2. In the tasks shown in the left of the window, click **Advanced System Settings**.
3. A user account control dialog box will appear; click **[Continue]**.
  - \* If you're asked to enter a password for an administrative account, log on to Windows as a user whose account type is Administrator, and then make this setting again.
4. In Performance, click **[Settings]** and then click the **Advanced** tab.
5. Choose **Background services**, and click **[OK]**.
6. Click **[OK]** to close **System Properties**.

### **Windows XP users**

1. Open the **Control Panel**, click **Performance and Maintenance** and double-click **System**.
  - \* If you're using the Classic view, double-click the **System** icon .
2. Click the **Advanced** tab, and then click Performance **[Settings]**.
3. Click the **Advanced** tab.
4. Choose **Background services** and click **[OK]**.
5. Click **[OK]** to close **System Properties**.



## Are you running multiple software?

Close software that you're not using.

Even if an software window is closed, it is still running if it appears in the taskbar. Be sure to exit unneeded software displayed.

## You may experience an improvement if you select the “Lighten the processing load on the computer” check box in the Driver Settings dialog box (Windows).

Proceed as follows to change the setting.

\* Changes to this setting will take effect when you disconnect and reconnect the UM-3G's USB cable.

\* Leave this check box unselected (the default state) if you're not experiencing problems.

1. Close all programs that are using the UM-3G.
2. Open the **Control Panel**, click **Additional Options**, and then click **UM-3G**.  
\* If you're using the Classic view, double-click the **UM-3G** icon.  
The **UM-3G Driver Settings** dialog box will appear.
3. In the settings dialog box, select the **Lighten Load** check box.
4. Click **[OK]**.

## Can't Play Back or Record

### Is the driver installed correctly?

After installation, have you made settings so that the UM-3G can be used?

You won't be able to use the UM-3G unless you've made these settings. Make the settings as described in below.

Windows Vista: **“Input/output Device Settings for Your Application”** (p. 14)

Windows XP: **“Input/output Device Settings for Your Application”** (p. 18)

Macintosh: **“MIDI Device Settings”** (p. 20)

### **Could your computer have entered Standby (Suspend), Hibernate, or Sleep mode during playback or recording?**

If your computer entered Standby (Suspend), Hibernate, or Sleep mode during playback or recording, the UM-3G may stop working correctly. Close all software that's using the UM-3G, disconnect the UM-3G's USB cable, and then reconnect it.

If this does not solve the problem, restart your computer.

\* If your computer enters standby (suspend), hibernate mode, or sleep mode during playback or recording, try changing the energy-conservation settings of your computer. For details on how to change these settings, refer to the owner's manual of your computer.

### **Could the USB cable have been disconnected or reconnected during playback or recording?**

If the USB cable is disconnected and reconnected during playback or recording, it may become impossible to play back or record via the UM-3G. Stop playback or recording, and then start playback or recording once again. If you are still unable to play back or record, close all applications that are using the UM-3G, disconnect the UM-3G's USB cable, and then reconnect it.

## **Playback or Recording Halts Midway Through, and Then Becomes Impossible**

### **Was a heavy processing load experienced while using the UM-3G, such as accessing the CD-ROM drive or a network?**

If an operation involving a heavy processing load is performed while the UM-3G is in use, it may not operate correctly. If this occurs, stop playback/recording, and then try resuming playback/recording. If you are still unable to play back/record, exit all software that use the UM-3G, disconnect the UM-3G from the computer and then reconnect it.

## **Operating System Becomes Unstable**

### **Operation becomes unstable when the computer is started up with the UM-3G already connected**

Please start up your computer with the UM-3G disconnected, and then connect the UM-3G. On a computer that uses a USB keyboard, starting up the computer with the UM-3G already connected may cause operation to become unstable. In this case, start up the computer with the UM-3G disconnected, and then connect the UM-3G.

## No Sound from Your Sound Module When You Play Back MIDI Data

### Could the UM-3G's [MIDI THRU] switch be turned ON?

Set the [MIDI THRU] switch to **OFF**.

### Are the MIDI cables connected correctly?

Check the MIDI cable connections (p. 27).

### Is the sound module set correctly?

Check the settings and volume of your sound module.

### Is the UM-3G's USB indicator lit?

If the USB indicator is not lit, the computer has not recognized the UM-3G.

Make sure that the UM-3G is correctly connected to the computer.

The driver must also be installed in order for the computer to recognize the UM-3G.

→ "Getting Connected and Installing Drivers" (Windows Vista: p. 12/ Windows XP: p. 15/  
Macintosh: p. 19)

## Duplicate Notes Sound

### Could the sound module be set to Local On?

### Could your sequencer software's Thru function be turned on?

If duplicate notes are sounded (i.e., if your sound module plays doubled notes), change the settings as follows. For details, refer to the owner's manual for the equipment you're using.

- Sound module: Local **Off**
- Sequencer software's Thru function: **Off**

## Deleting the Driver

If you were unable to install the driver according to the procedure given, the UM-3G may not be recognized correctly by the computer. In this case, use the following procedure to delete the driver, and then follow the procedure to install the driver once again (p. 11).

### Windows users

\* The displayed content may differ depending on your system.

1. Start up Windows with the UM-3G disconnected.  
Disconnect all USB cables other than a USB keyboard or USB mouse.  
Log on as a user that has administrative privileges (e.g., Administrator).
2. Insert the CD-ROM into the CD-ROM drive of your computer.
3. Go to the appropriate folder of the CD-ROM as listed below, and double-click **Uninstal.exe**.  
**Windows Vista users:**     **UM-3G\Driver\Vista\Uninstal.exe**  
**Windows XP users:**       **UM-3G\Driver\XP\Uninstal.exe**
4. A message saying **“The installed UM-3G driver will be uninstalled.”** will appear.  
Click **[OK]**.  
If any other message appears, proceed as directed by that message.
5. A message will indicate **“Uninstillation was completed.”** Click **[OK]** to restart Windows.

## Macintosh users

\* The displayed content may differ depending on your system.

1. Start up Macintosh with the UM-3G disconnected.  
Disconnect all USB cables other than a USB keyboard or USB mouse.
2. Insert the CD-ROM into the CD-ROM drive of your Macintosh.
3. Go to the appropriate folder of the CD-ROM as listed below, double-click **UM3G\_Uninstaller**.  
**UM-3G\Driver\UM3G\_Uninstaller**
4. The display will indicate **“This uninstalls UM-3G driver from this Macintosh.”** Click **[Uninstall]**.  
If any other message appears, proceed as directed by that message.
5. The display will indicate **“Are you sure to uninstall the driver?”** Click **[OK]**.
6. The **Authenticate** dialog box or the dialog box that indicates **“Uninstaller requires that you type your password”** will appear; enter the password and click **[OK]**.
7. A message will indicate **“Uninstillation is completed.”** Click **[Restart]** to restart Macintosh.

\* It may take some time for your computer to restart.

## Connecting Multiple UM-3G (or UM-3EX) Units

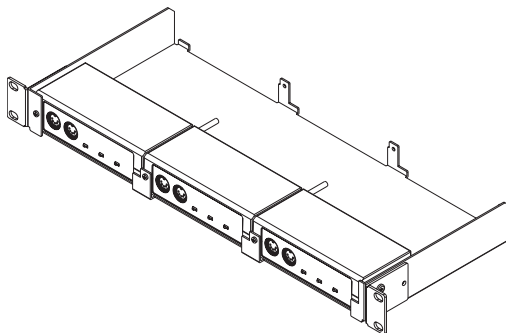
You can simultaneously connect up to three UM-3G (or UM-3EX) units via USB to a single computer.

\* Depending on your system, the second or subsequent unit may not be usable depending on the limitations imposed by the CPU processing speed, hard disk, memory, and the performance of your software.

### UNIT number

If you're using several connected UM-3G (or UM-3EX) units, set the [UNIT] switch of each UM-3G (or UM-3EX) to a different UNIT number.

The separately available RAF-70 rack mount adaptor lets you mount up to three units side by side in a EIA-1U rack.



## Installing the Driver

If you're using several connected UM-3G (or UM-3EX) units, proceed as follows to install the driver and connect the units.

### Windows Vista users

1. First, carry out the installation for only the first UM-3G unit, as described in "Installing the Driver" (p. 12).

When installation is completed, temporarily disconnect the UM-3G from the computer.

\* Do not connect the second or third UM-3G (or UM-3EX) units at this point.

2. If you're also using an UM-3EX, install the UM-3EX driver using the same procedure as in step 1.

The UM-3EX driver is provided on the included "UM-2G/UM-3G CD-ROM."

**Support\UM-3EX Driver\Vista\Setup.exe**

3. Set the [MODE] switch and [UNIT] switch of the UM-3G (or UM-3EX).

	[MODE] switch	[UNIT] switch
First UM-3G unit	MASTER	1
Second UM-3G (or UM-3EX) unit	SLAVE	2
Third UM-3G (or UM-3EX) unit	SLAVE	3

\* Even if you're using the UM-3G in combination with a UM-3EX, you must use the UM-3G as the first unit connected to the computer. You can't use the UM-3EX as the first unit.

4. Connect the second UM-3G (or UM-3EX) to the upper of the first UM-3G unit's two UM-3G/UM-3EX connectors.
5. Connect the third UM-3G (or UM-3EX) to the lower of the first UM-3G unit's two UM-3G/UM-3EX connectors.
6. Connect the first UM-3G unit to the computer.

Preparations to use the devices will start automatically.

This completes driver installation.

The UNIT number will be added to the MIDI input/output device names.  
 In your application, select the MIDI input/output device that you want to use.

[UNIT] switch	Example of MIDI input/output device names
1	1 (UM-3G(1)) 2 (UM-3G(1)) 3 (UM-3G(1))
2	1 (UM-3G(2)) 2 (UM-3G(2)) 3 (UM-3G(2))
3	1 (UM-3G(3)) 2 (UM-3G(3)) 3 (UM-3G(3))

\* In some cases, a number such as "2-" or "3-" will be added to the beginning of the MIDI input/output device name. This number is automatically added by the operating system, and has no relation to the UNIT number setting.

\* For the UM-3EX, instead of "UM-3G" appearing in the MIDI input/output device name, "UM-3EX" will be shown.

## Windows XP users

1. First, carry out the installation for only the first UM-3G unit, as described in "Installing the Driver" (p. 15).

When installation is completed, temporarily disconnect the UM-3G from the computer.

\* Do not connect the second or third UM-3G (or UM-3EX) units at this point.

2. If you're also using an UM-3EX, install the UM-3EX driver using the same procedure as in step 1.

The UM-3EX driver is provided on the included "UM-2G/UM-3G CD-ROM."

**Support\UM-3EX Driver\XP\Setup.exe**

3. Set the [MODE] switch and [UNIT] switch of the UM-3G (or UM-3EX).

	[MODE] switch	[UNIT] switch
First UM-3G unit	MASTER	1
Second UM-3G (or UM-3EX) unit	SLAVE	2
Third UM-3G (or UM-3EX) unit	SLAVE	3

\* Even if you're using the UM-3G in combination with a UM-3EX, you must use the UM-3G as the first unit connected to the computer. You can't use the UM-3EX as the first unit.



4. Connect the second UM-3G (or UM-3EX) to the upper of the first UM-3G unit's two UM-3G/UM-3EX connectors.
5. Connect the third UM-3G (or UM-3EX) to the lower of the first UM-3G unit's two UM-3G/UM-3EX connectors.
6. Connect the first UM-3G unit to the computer.
7. The **Found New Hardware Wizard** dialog box will appear.  
If you are asked whether you want to connect to Windows Update, choose **"No, ..."** and click **[Next]**.
8. Choose **Install the software automatically (Recommended)**, and click **[Next]**.  
If the **Hardware Installation** dialog box appears, click **[Continue Anyway]** to proceed with the installation.  
\* If you're unable to continue, click **[OK]** to exit the installation. Change the settings as described in "Driver Signing Options Settings (Windows XP)" (p. 29), and then perform the installation once again.
9. The screen will indicate **"Completed the Found New Hardware Wizard"**. Click **[Finish]**.  
If the **Found New Hardware Wizard** dialog box appears again, repeat steps 7 through 9.

This completes driver installation.

In your application, select the MIDI input/output device that you want to use.

[UNIT] switch	Example of MIDI input/output device names
1	1 (UM-3G(1)) 2 (UM-3G(1)) 3 (UM-3G(1))
2	1 (UM-3G(2)) 2 (UM-3G(2)) 3 (UM-3G(2))
3	1 (UM-3G(3)) 2 (UM-3G(3)) 3 (UM-3G(3))

\* For the UM-3EX, instead of "UM-3G" appearing in the MIDI input/output device name, "UM-3EX" will be shown.

## Macintosh users

1. Install the UM-3G driver as described in “Installing the Driver” (p. 19).
  - \* Even after the driver installation has been completed, do not connect the UM-3G to the computer yet.
2. If you're also using an UM-3EX, install the UM-3EX driver using the same procedure as in step 1.

The UM-3EX driver is provided on the included “UM-2G/UM-3G CD-ROM.”

**Support\UM-3EX Driver\Setup.exe**

- \* Even after the driver installation has been completed, do not connect the UM-3EX to the computer yet.
3. Set the [MODE] switch and [UNIT] switch of the UM-3G (or UM-3EX).

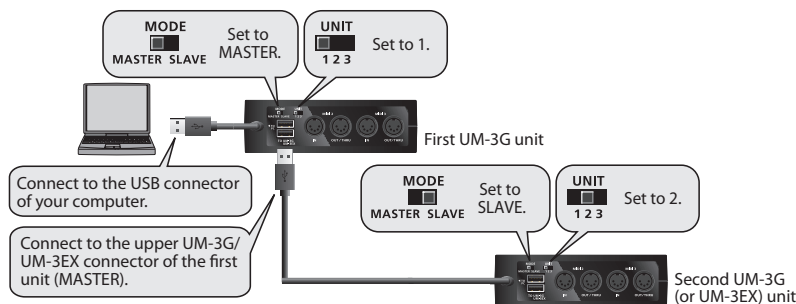
	[MODE] switch	[UNIT] switch
First UM-3G unit	MASTER	1
Second UM-3G (or UM-3EX) unit	SLAVE	2
Third UM-3G (or UM-3EX) unit	SLAVE	3

- \* Even if you're using the UM-3G in combination with a UM-3EX, you must use the UM-3G as the first unit connected to the computer. You can't use the UM-3EX as the first unit.
4. Connect the second UM-3G (or UM-3EX) to the upper of the first UM-3G unit's two UM-3G/UM-3EX connectors.
  5. Connect the third UM-3G (or UM-3EX) to the lower of the first UM-3G unit's two UM-3G/UM-3EX connectors.
  6. Connect the first UM-3G unit to the computer.  
This completes driver installation.

As described in “MIDI Device Settings” (p. 20), make the settings for MIDI input/output for all the UM-3G (and UM-3EX) units you've connected.

## Connection Examples

### Connecting two UM-3G (or UM-3EX) units

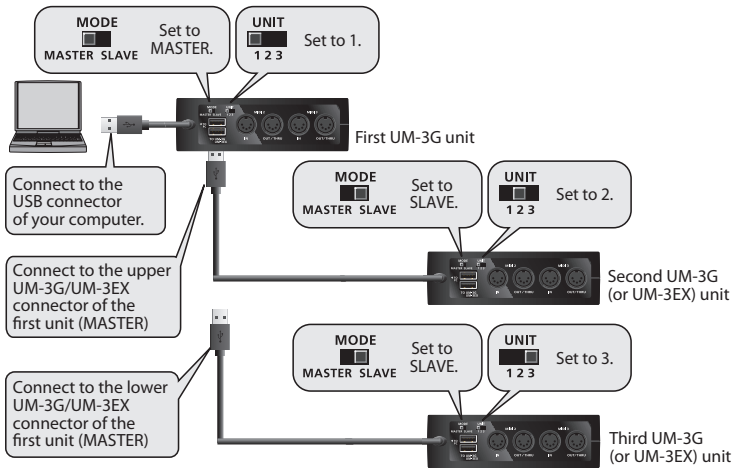


### [MODE] switch and [UNIT] switch settings

Switch	Condition	Setting
[MODE] switch	UM-3G connected to the computer	MASTER
	UM-3G (or UM-3EX) connected to a UM-3G/UM-3EX connector	SLAVE
[UNIT] switch	First unit	1
	Second unit	2

\* Do not change the setting of the [MODE] switch or [UNIT] switch while the UM-3G (or UM-3EX) is connected to your computer. Before changing the setting of the [MODE] switch or [UNIT] switch, you must first disconnect the UM-3G (or UM-3EX) from the computer, change the setting of the switch, and then reconnect the UM-3G (or UM-3EX) to your computer.

## Connecting three UM-3G/3EX units



### [MODE] switch and [UNIT] switch settings

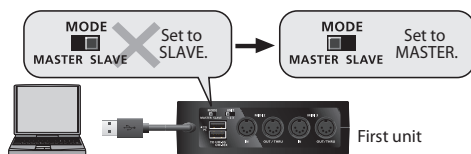
Switch	Condition	Setting
[MODE] switch	UM-3G connected to the computer	MASTER
	UM-3G (or UM-3EX) connected to a UM-3G/UM-3EX connector	SLAVE
[UNIT] switch	First unit	1
	Second unit	2
	Third unit	3

\* Do not change the setting of the [MODE] switch or [UNIT] switch while the UM-3G (or UM-3EX) is connected to your computer. Before changing the setting of the [MODE] switch or [UNIT] switch, you must first disconnect the UM-3G (or UM-3EX) from the computer, change the setting of the switch, and then reconnect the UM-3G (or UM-3EX) to your computer.

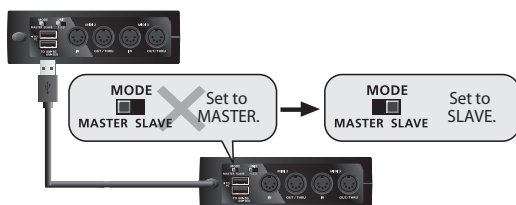
## CAUTION

Don't make connections like the following.

### UM-3G set to SLAVE and connected to a computer



### UM-3G (or UM-3EX) set to MASTER and connected to a UM-3G/UM-3EX connector



# Main Specifications

---

## UM-3G: USB MIDI Interface

### Controllers

[MIDI THRU] switch 1  
[MIDI THRU] switch 2  
[MIDI THRU] switch 3  
[MODE] switch  
[UNIT] switch

### Connectors

MIDI IN Connector x 3 (16 MIDI Channels x 3)  
MIDI OUT/THRU Connector x 3 (16 MIDI Channels x 3)  
USB Cable x 1  
UM-3G/UM-3EX Connector x 2

### Power Supply

Supplied from the computer

### Current Draw

90 mA

### Dimensions

122.9 (W) x 48.0 (D) x 28.0 (H) mm  
4-7/8 (W) x 1-15/16 (D) x 1-1/8 (H) inches

### Weight

125 g / 5 oz

### Accessories

Owner's Manual  
CD-ROM "UM-2G/UM-3G CD-ROM"

\* In the interest of product improvement, the specifications, appearance, and/or contents of this unit are subject to change without prior notice.

# Index

## A

Audio MIDI Setup ..... 20

## B

BUS Power ..... 28

## D

Deleting the Driver

    Macintosh ..... 37

    Windows ..... 36

Device

    Other Device ..... 27

    Unknown Device ..... 27

Driver

    Install(Macintosh) ..... 19

    Install(Windows Vista) ..... 12

    Install(Windows XP) ..... 15

    What is a driver ..... 11

Driver Signing Options Settings ..... 29

## I

Installing the Driver

    Macintosh ..... 19

    Windows Vista ..... 12

    Windows XP ..... 15

## M

Macintosh ..... 19, 42

Media Player ..... 14, 18

MIDI Device ..... 24–26

    Macintosh ..... 20

    Windows Vista ..... 14

    Windows XP ..... 18

MIDI IN Connector ..... 8

MIDI IN Indicator ..... 8

MIDI OUT Indicator ..... 8

MIDI OUT/THRU Connector ..... 8

[MIDI THRU] Switch ..... 9, 24–26

[MODE] Switch ..... 10–11, 13, 16, 20, 39–40, 42–44

## O

Other Device ..... 27

## P

Performance Settings ..... 32

## U

[UNIT] Switch ..... 10–11, 13, 16, 20, 39–40, 42–44

UNIT Number ..... 38, 40

Unknown Device ..... 27

USB Cable ..... 10

USB Indicator ..... 9

## W

Windows Vista ..... 12, 39

Windows XP ..... 15, 40

---

# MEMO





For EU Countries

This product complies with the requirements of EMC Directive 2004/108/EC.

For the USA

## FEDERAL COMMUNICATIONS COMMISSION RADIO FREQUENCY INTERFERENCE STATEMENT

This equipment has been tested and found to comply with the limits for a Class B digital device, pursuant to Part 15 of the FCC Rules. These limits are designed to provide reasonable protection against harmful interference in a residential installation. This equipment generates, uses, and can radiate radio frequency energy and, if not installed and used in accordance with the instructions, may cause harmful interference to radio communications. However, there is no guarantee that interference will not occur in a particular installation. If this equipment does cause harmful interference to radio or television reception, which can be determined by turning the equipment off and on, the user is encouraged to try to correct the interference by one or more of the following measures:

- Reorient or relocate the receiving antenna.
- Increase the separation between the equipment and receiver.
- Connect the equipment into an outlet on a circuit different from that to which the receiver is connected.
- Consult the dealer or an experienced radio/TV technician for help.

This device complies with Part 15 of the FCC Rules. Operation is subject to the following two conditions:

- (1) this device may not cause harmful interference, and
- (2) this device must accept any interference received, including interference that may cause undesired operation.

Unauthorized changes or modification to this system can void the users authority to operate this equipment.  
This equipment requires shielded interface cables in order to meet FCC class B Limit.

For Canada

### NOTICE

This Class B digital apparatus meets all requirements of the Canadian Interference-Causing Equipment Regulations.

### AVIS

Cet appareil numérique de la classe B respecte toutes les exigences du Règlement sur le matériel brouilleur du Canada.

For C.A. US (Proposition 65)

### WARNING

This product contains chemicals known to cause cancer, birth defects and other reproductive harm, including lead.

For the USA

## DECLARATION OF CONFORMITY Compliance Information Statement

Model Name : UM-3G  
Type of Equipment : USB MIDI Interface  
Responsible Party : Cakewalk, Inc.  
Address : 268 Summer Street Boston, MA 02210 USA  
Telephone : (617) 423-9004

**For EU Countries**



- UK** This symbol indicates that in EU countries, this product must be collected separately from household waste, as defined in each region. Products bearing this symbol must not be discarded together with household waste.
- DE** Dieses Symbol bedeutet, dass dieses Produkt in EU-Ländern getrennt vom Hausmüll gesammelt werden muss gemäß den regionalen Bestimmungen. Mit diesem Symbol gekennzeichnete Produkte dürfen nicht zusammen mit den Hausmüll entsorgt werden.
- FR** Ce symbole indique que dans les pays de l'Union européenne, ce produit doit être collecté séparément des ordures ménagères selon les directives en vigueur dans chacun de ces pays. Les produits portant ce symbole ne doivent pas être mis au rebut avec les ordures ménagères.
- IT** Questo simbolo indica che nei paesi della Comunità europea questo prodotto deve essere smaltito separatamente dai normali rifiuti domestici, secondo la legislazione in vigore in ciascun paese. I prodotti che riportano questo simbolo non devono essere smaltiti insieme ai rifiuti domestici. Ai sensi dell'art. 13 del D.Lgs. 25 luglio 2005 n. 151.
- ES** Este símbolo indica que en los países de la Unión Europea este producto debe recogerse aparte de los residuos domésticos, tal como está regulado en cada zona. Los productos con este símbolo no se deben depositar con los residuos domésticos.
- PT** Este símbolo indica que nos países da UE, a recolha deste produto deverá ser feita separadamente do lixo doméstico, de acordo com os regulamentos de cada região. Os produtos que apresentem este símbolo não deverão ser eliminados juntamente com o lixo doméstico.
- NL** Dit symbool geeft aan dat in landen van de EU dit product gescheiden van huishoudelijk afval moet worden aangeboden, zoals bepaald per gemeente of regio. Producten die van dit symbool zijn voorzien, mogen niet samen met huishoudelijk afval worden verwijderd.
- DK** Dette symbol angiver, at i EU-lande skal dette produkt opsamles adskilt fra husholdningsaffald, som defineret i hver enkelt region. Produkter med dette symbol må ikke smides ud sammen med husholdningsaffald.
- NO** Dette symbolet indikerer at produktet må behandles som spesialavfall i EU-land, iht. til retningslinjer for den enkelte regionen, og ikke kastes sammen med vanlig husholdningsavfall. Produkter som er merket med dette symbolet, må ikke kastes sammen med vanlig husholdningsavfall.

- SE** Symbolen anger att i EU-länder måste den här produkten kasseras separat från hushållsavfall, i enlighet med varje regions bestämmelser. Produkter med den här symbolen får inte kasseras tillsammans med hushållsavfall.
- FI** Tämä merkintä ilmaisee, että tuote on EU-maissa kerättävä erillään kotitalousjätteenä kunkin alueen voimassa olevien määräysten mukaisesti. Tällä merkinnällä varustettuja tuotteita ei saa hävittää kotitalousjätteen mukana.
- HU** Ez a szimbólum azt jelenti, hogy az Európai Unióban ezt a terméket a háztartási hulladéktól elkülönítve, az adott régióban érvényes szabályozás szerint kell gyűjteni. Az ezzel a szimbóllal ellátott termékeket nem szabad a háztartási hulladék közé dobni.
- PL** Symbol oznacza, że zgodnie z regulacjami w odpowiednim regionie, w krajach UE produktu nie należy wyrzucać z odpadami domowymi. Produktów opatrzonych tym symbolem nie można utylizować razem z odpadami domowymi.
- CZ** Tento symbol udává, že v zemích EU musí být tento výrobek sbíráán odděleně od domácího odpadu, jak je určeno pro každý region. Výrobky nesoucí tento symbol se nesmí vyřazovat spolu s domácím odpadem.
- SK** Tento symbol vyjadruje, že v krajinách EU sa musí zber tohto produktu vykonávať oddelene od domového odpadu, podľa nariadení platných v konkrétnej krajine. Produkty s týmto symbolom sa nesmú vyhadzovať spolu s domovým odpadom.
- EE** See sümbol näitab, et EL-i maades tuleb see toode olempürgist eraldi koguda, nii nagu on igas piirkonnas määratletud. Selle sümboliga märgitud tooteid ei tohi ära visata koos olmeprügiga.
- LT** Šis simbolis rodo, kad ES šalyse šis produktas turi būti surenkamas atskirai nuo buitinių atliekų, kaip nustatyta kiekviename regione. Šiuo simboliu paženklinoti produktai neturi būti išmetami kartu su buitiniems atliekoms.
- LV** Šis simbols norāda, ka ES valstīs šo produktu jāievie atsevišķi no mājsaimniecības atkritumiem, kā noteikts katrā reģionā. Produkts ar šo simbolu nedrīkst izmest kopā ar mājsaimniecības atkritumiem.
- SI** Ta simbol označuje, da je treba proizvoje v državah EU zbirati ločeno od gospodinskih odpadkov, tako kot je določeno v vsaki regiji. Proizvoda s tem znakom ni dovoljeno odlagati skupaj z gospodinskimi odpadki.
- GR** Το σύμβολο αυτό υποδηλώνει ότι στις χώρες της Ε.Ε. το συγκεκριμένο προϊόν πρέπει να συλλέγεται χωριστά από τα υπολείμματα οικιακά απορρίμματα, σύμφωνα με όσα προβλέπονται σε κάθε περιοχή. Τα προϊόντα που φέρουν το συγκεκριμένο σύμβολο δεν πρέπει να απορρίπτονται μαζί με τα οικιακά απορρίμματα.

**For China**

## 有关产品中所含有害物质的说明

本资料就本公司产品中所含的特定有害物质及其安全性予以说明。  
本资料适用于 2007 年 3 月 1 日以后本公司所制造的产品。

### 环保使用期限



此标志适用于在中国国内销售的电子信息产品，表示环保使用期限的年限。所谓环保使用期限是指在自制造日起的定期限内，产品中所含的有害物质不致引起环境污染，不会对人身、财产造成严重的不良影响。环保使用期限仅在遵照产品使用说明书，正确使用产品的条件下才有效。不当的使用，将会导致有害物质泄漏的危险。

### 产品中有毒有害物质或元素名称及含量

部件名称	有毒有害物质或元素					
	铅(Pb)	汞(Hg)	镉(Cd)	六价铬(Cr(VI))	多溴联苯(PBB)	多溴二苯醚(PBDE)
外壳(壳体)	×	○	○	○	○	○
电子部件(印刷电路板等)	×	○	×	○	○	○
附件(电源线、交流适配器等)	×	○	○	○	○	○

○：表示该有害物质在该部件所有均质材料中的含量均在 SJ/T11363-2006 标准规定的限量要求以下。  
×：表示该有害物质至少在该部件的某一均质材料中的含量超出 SJ/T11363-2006 标准规定的限量要求。  
因根据现有的技术水平，还没有什么物质能够代替它。



